

NAILING SCHEDULE

CHORD BRUCE NAILING: 8 - 16d NAILS EACH SIDE OF SPLICE TRUSS BLOCKING (4) - 16d (TOENAIL)			
STUD TO TOP PLATE: 2-16d END NAIL STUD TO SILL PLATE: 2-16d END NAIL OR 4-8d TOENAIL			
DBL. HEADER: 16d @ 16" OC ALONG EACH EDGE HEADER: 16d @ 16" OC ALONG EACH EDGE			
DOUBLE TOP PLATE: 16d @ 16" OC DOUBLE TOP PLATE: 16d @ 16" OC			
UNLESS SPECIFIED HEREIN, ALL NAILING SHALL BE PER 2012 IRC TABLE R602.3(1).			
UP/LIFT TRANSFER: PROVIDE SIMPSON HZ-5A AT EACH END OF TRUSSES			
PROVIDE 2x4 SOLID BLOCKING ON ALL UNSUPPORTED EDGES OF PLYWOOD ON SHEAR WALLS			
UNBLOCKED ROOF DIAPHRAGM			
ROOF SHEATHING NAILING			
BORDER: 8d COMMON @ 6" OC	CALC. ALLOW		
FIELD: 8d COMMON @ 12" OC	LOAD (lb/ft)		
FIELD: 8d COMMON @ 12" OC	LOAD (lb/ft)		
			197

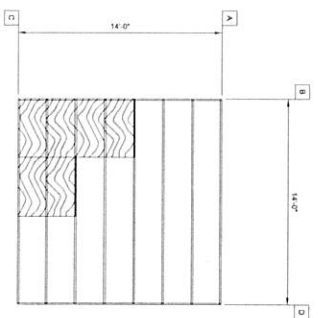
SHEAR WALL SCHEDULE

2x4 FRAMING SHEATH THE EXTERIOR WITH 3/8" SMARTSIDE WITH FOIL BACKING. 14'-0" LONG TOTAL. (4" x 4") - 8" USED FOR SHEAR NAILING.	X	230
EDGE: 8d COMMON @ 6" OC		
FIELD: 8d COMMON @ 12" OC		
NO HOLD-DOWNS REQUIRED		

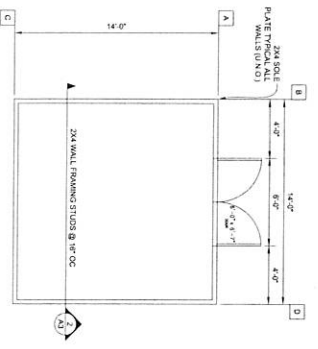
SHEAR WALL SCHEDULE

2x4 FRAMING SHEATH THE EXTERIOR WITH 3/8" SMARTSIDE WITH FOIL BACKING. 14'-0" LONG TOTAL. (4" x 4") - 8" USED FOR SHEAR NAILING.	X	230
EDGE: 8d COMMON @ 6" OC		
FIELD: 8d COMMON @ 12" OC		
NO HOLD-DOWNS REQUIRED		

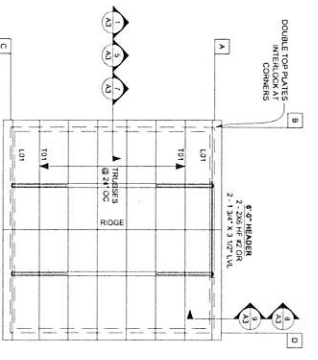
WHEN PERFORATED SHEAR WALL DESIGN IS DESIGNATED, AREAS ABOVE AND BELOW OPENINGS ARE USED IN SHEAR CALCULATIONS. REFERENCE 2012 IRC TABLE 2303.3.8.2



FOUNDATION PLAN



FLOOR PLAN



ROOF FRAMING PLAN

PRELIMINARY

STRUCTURAL DRAWINGS BY:
TUFF SHED
IN HOUSE DRAFTING DEPARTMENT
1777 S. HARRISON STREET
DENVER, COLORADO 80210
(303) 753-TUFF

PO No. Inv No. 878966
Customer: BRAD MORRISON
ONSITE DEVELOPMENT
Description:
ACCESSORY BUILDING
14' X 14' = 196 SQ FT
Site Address:
5100 EAST 2500 NORTH
EDEN, UT 84310

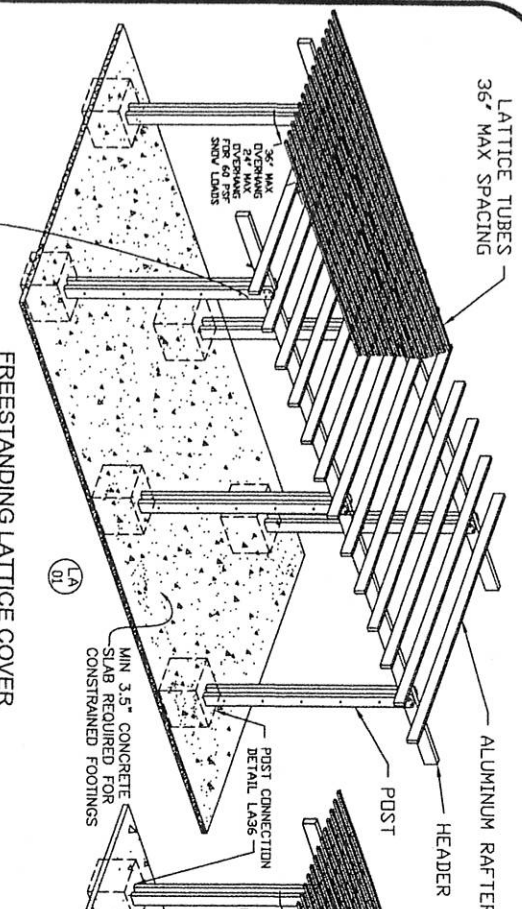
THESE DRAWINGS AND THE DESIGN ARE THE PROPERTY OF TUFF SHED, INC. THESE DRAWINGS ARE FOR A BUILDING TO BE SUPPLIED AND BUILT BY TUFF SHED. ANY OTHER USE IS FORBIDDEN BY TUFF SHED, INC.

TUFF SHED
Storage Buildings & Garages
TUFF SHED, INC.
8401 SOUTH 200 WEST
SALT LAKE CITY, UT 84117
(801) 288-8883
CONTRACTOR'S LICENSE #01987801
COPYRIGHT 1997-2014 TUFF SHED, INC.
PROPRIETARY. ALL RIGHTS RESERVED. STORE 04

Drawn By: FR
Date: 3/27/15
Checked By:
Date:
Revised:
Scale: 1/4" = 1'-0"

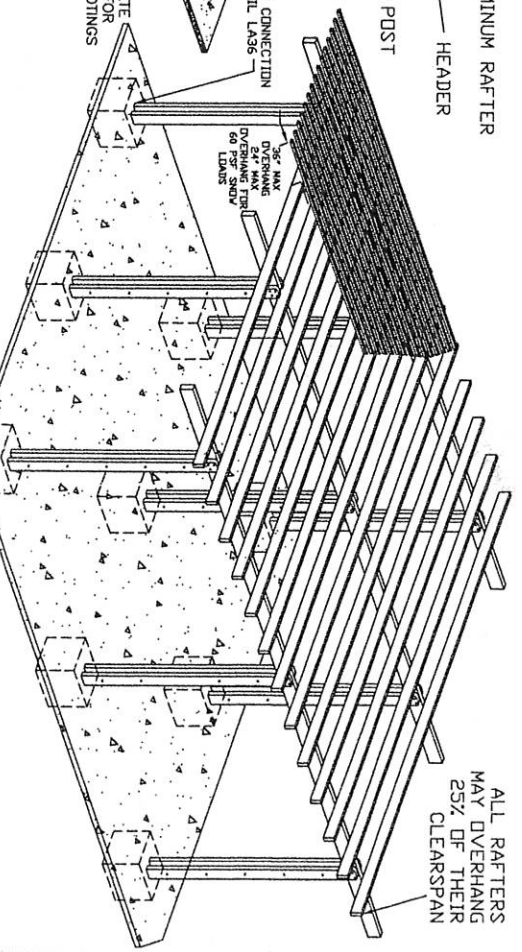
PLANS WALL SCHED
NAILING SCHEDULE
Sheet 1 of 3

A2



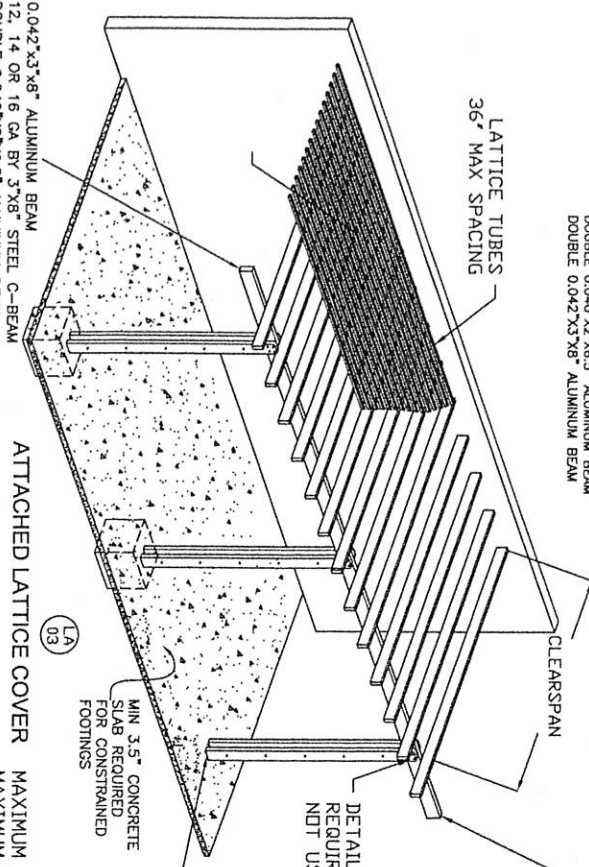
FREESTANDING LATTICE COVER

0.042"x3"x8" ALUMINUM BEAM
 12, 14 OR 16 GA BY 3"x8" STEEL C-BEAM
 DOUBLE 0.040"x2"x6.5" ALUMINUM BEAM
 DOUBLE 0.042"x3"x8" ALUMINUM BEAM



FREESTANDING MULTISPAN LATTICE COVER

ALL RAFTERS MAY OVERHANG 25% OF THEIR CLEARSPAN



ATTACHED LATTICE COVER

0.042"x3"x8" ALUMINUM BEAM
 12, 14 OR 16 GA BY 3"x8" STEEL C-BEAM
 DOUBLE 0.040"x2"x6.5" ALUMINUM BEAM
 DOUBLE 0.042"x3"x8" ALUMINUM BEAM

MAXIMUM HEIGHT FOR PATIO COVERS IS 12'.
 MAXIMUM HEIGHT FOR COMMERCIAL COVERS AND CARPORTS IS 15'.

ALL HEADERS MAY OVERHANG 25% OF POST SPACING

SINGLE SPAN ATTACHED PATIO COVER DOES NOT REQUIRE FOOTINGS

DETAIL LA24, LA25 OR LA26 REQUIRED IF DETAIL LA36 IS NOT USED.

MIN 3.5" CONCRETE SLAB REQUIRED FOR CONSTRAINED FOOTINGS

CLEARSPAN

ALL LATTICE STRUCTURES W/ SURFACE MOUNTED POSTS MUST CHECK TABLES L1 AND L2 ON SHEET M5

- COMPONENT DETAILS**
- LATTICE LA21
 - RAFTERS LA04, LA05, LA21C(X3 ONLY)
 - HEADERS LA04, LA05, LA06, LA25, LA26
 - POSTS LA15, LA17, LA19, LA20, LA22
 - CONNECTION DETAILS LATTICE/RAFTER LA27
 - RAFTER/HEADER LA27, LA38, LA39
 - HEADER/POST LA24, LA25, LA26, LA28
 - POST/SLAB LA35
 - POST/FOOTING LA34, LA36
 - RAFTER/WALL LA30, LA31, LA32, LA33
 - HEADER/WALL LA40
 - NONSTRUCTURAL LA37, LA41

Drawn By	CHP
Check By	CHP
Date	
Revision	LAT101.DWG
Scale	Page #

Carl Putnam, P. E.
 3441 IVYLINK PLACE
 LYNCHBURG, VA 24503
 CARLPUTNAM@COMCASTNET



FEB 24 2014

METALS
Building Products

Revisions

METALS BUILDING PRODUCTS
 5005 VETERANS MEMORIAL HWY
 HOLBROOK, NY 11741
 (631) 563-4000