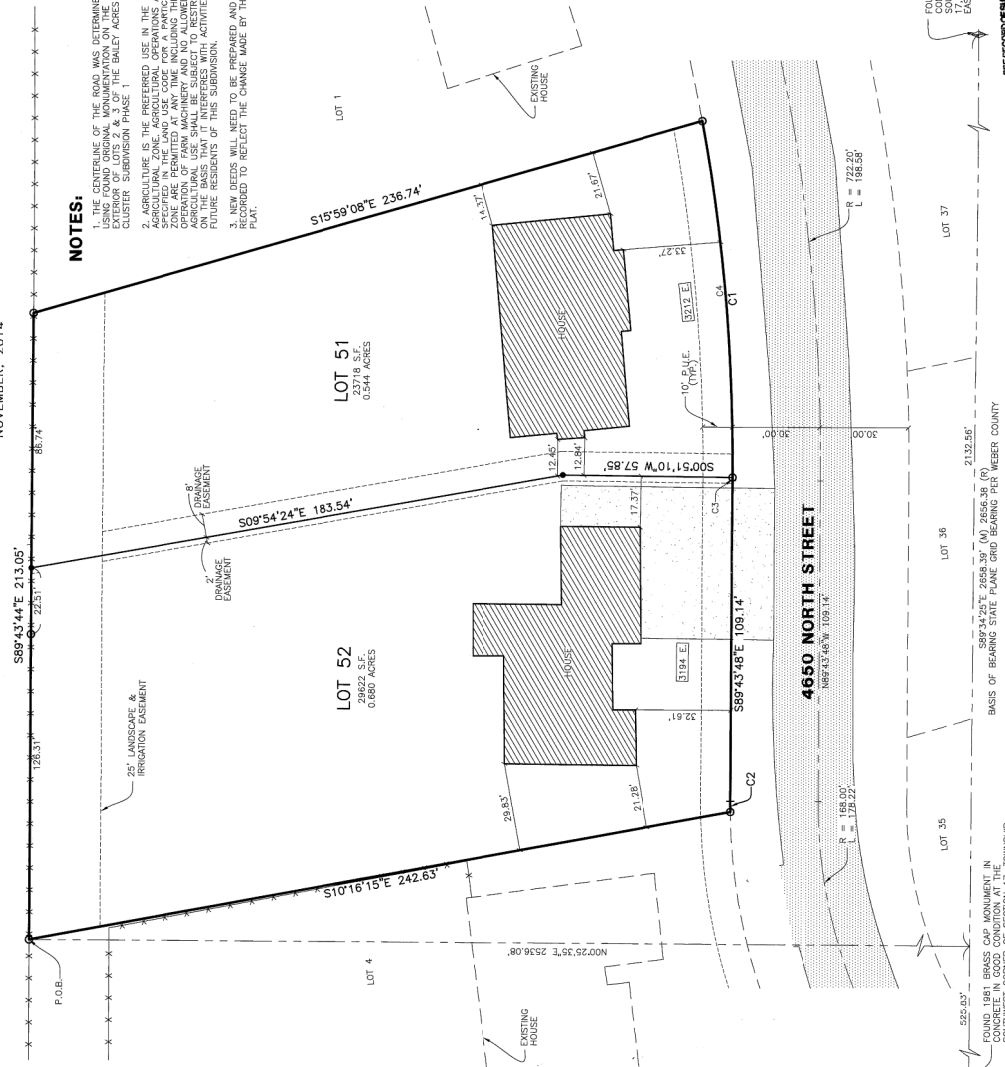


BAILEY ACRES CLUSTER SUBDIVISION PH.1 2nd Amendment

AMENDMENT OF LOTS 2 AND 3
PART OF THE SOUTHWEST QUARTER OF SECTION 17, T.7N., R.1E., S.L.B.&M., U.S. SURVEY
WEBER COUNTY, UTAH
NOVEMBER, 2014



LEGEND

- SECTION CORNER
- FOUND REBAR AND CAP LABEL "REVE & ASSOCIATES"
- SET 5/8" X 24" REBAR AND PLASTIC CAPS AT CORNERS AND POINTS TO BE MONUMENTED "REVE & ASSOCIATES"
- BOUNDARY
- LOT LINE
- ADJOINING PROPERTY
- EASEMENTS
- SECTION THE LINE
- ROAD CENTERLINE
- EXISTING FENCELINE
- EXISTING PAVEMENT
- EXISTING CONCRETE
- EXISTING BUILDING
- P.U.E. = PUBLIC UTILITY EASEMENT

NOTES:

- THE CENTERLINE OF THE ROAD WAS DETERMINED USING FOUND ORIGINAL MONUMENTATION ON THE ADJACENT "REVE & ASSOCIATES" CLUSTER SUBDIVISION PHASE 1.
- AGRICULTURE IS THE PREFERRED USE IN THE AGRICULTURAL ZONE. AGRICULTURAL OPERATIONS AS WELL AS OTHER PERMITTED USES IN THE AGRICULTURAL ZONE ARE PERMITTED AT ANY TIME INCLUDING THE OPERATION OF FARM MACHINES AND THE INSTALLATION OF PERMANENT STRUCTURES TO THE EXTENT OF FOUR RESIDENTS OF THIS SUBDIVISION.
- NEW DEEDS WILL NEED TO BE PREPARED AND RECORDED TO REFLECT THE CHANGE MADE OF THIS PLAT.

BASIS OF BEARINGS
THE BASIS OF BEARINGS FOR THIS PLAT IS 3893.2525' BETWEEN FOUND QUARTER CORNERS OF SECTION 17, TOWNSHIP 7 NORTH, RANGE 1 EAST, RANGE 1 EAST, SALT LAKE BASIN AND MERIDIAN. (STATE PLANE GRID BEARINGS PER WEBER COUNTY)

NARRATIVE
THE PURPOSE OF THIS PLAT IS TO ADJUST THE COMMON LOT LINE BETWEEN LOTS 2 AND 3 TO ALLOW THE OWNER OF LOT 3 TO BUILD A R.V. PAD.

BOUNDARY DESCRIPTION
ALL OF LOTS 2 & 3 BAILEY ACRES SUBDIVISION PHASE 1, MORE PARTICULARLY DESCRIBED AS FOLLOWS:
RANGE 1 EAST, SALT LAKE BASIN AND MERIDIAN, U.S. SURVEY, DESCRIBED AS FOLLOWS:
BEGINNING AT A POINT S89°34'25"E 925.83' AND N00°25'35"E 2356.08 FEET FROM A FOUND 1841 BRASS CAP MONUMENT AT THE SOUTHWEST CORNER OF SECTION 17, TOWNSHIP 7 NORTH, RANGE 1 EAST, RANGE 1 EAST, SALT LAKE BASIN AND MERIDIAN, U.S. SURVEY, 45.08 FEET; THENCE S15°59'08"E 236.74 FEET TO A POINT ON A 670.20 FOOT RADIUS CURVE TO THE RIGHT; THENCE ALONG SAID CURVE 122.85 FEET TO A POINT ON A 184.00 FOOT RADIUS CURVE TO THE LEFT; THENCE ALONG SAID CURVE 3.83 FEET (CHORD BEARS S89°44'27"N 3.83 FEET); THENCE N10°16'15"W 242.63 FEET TO THE POINT OF BEGINNING.
CONTAINING 53.40 SQUARE FEET OR 1.225 ACRES

CURVE TABLE

STATION	ARC LENGTH	CHD LENGTH	TANGENT	CHD BEARING	DELTA
CA	198.00	34.83	1.81	S89°44'27"N	110.01°
CB	198.00	34.83	1.81	S89°44'27"N	110.01°
CC	670.20	1.00	0.50	N89°46'27"E	0705.08°
CD	670.20	1.00	0.50	S89°45'58"E	10725.01°

DEVELOPER:
CHAD A. ANDERSON
1164 S. 4650 NORTH
LIBERTY, UTAH 84310

WEBER COUNTY SURVEYOR:
I HEREBY CERTIFY THAT THE WEBER COUNTY SURVEYOR'S CORRECTNESS, SECTION CORNER DATA, AND FOR HARMONY WITH LINES AND MONUMENTS ON RECORD IN COUNTY RECORDS HAS BEEN REVIEWED AND APPROVED BY THE LICENSED LAND SURVEYOR DOES NOT ASSUME ANY LIABILITY THEREWITH RESPONSIBILITIES AND OBLIGATIONS OF THE SURVEYOR. SIGNED THIS 11/11/14 DAY OF NOVEMBER, 2014.

SURVEYOR'S CERTIFICATE
I, CHAD A. ANDERSON, DO HEREBY CERTIFY THAT I AM A REGISTERED PROFESSIONAL LAND SURVEYOR IN THE STATE OF UTAH IN ACCORDANCE WITH THE STATE PROFESSIONAL LAND SURVEYING ACT. THE SURVEY DESCRIBED ON THIS PLAT IS IN ACCORDANCE WITH SECTION 17, TOWNSHIP 7 NORTH, RANGE 1 EAST, RANGE 1 EAST, SALT LAKE BASIN AND MERIDIAN, U.S. SURVEY, AS REPRESENTED ON THIS PLAT, AND THAT THIS PART OF BAILEY ACRES CLUSTER SUBDIVISION PHASE 1, 2ND AMENDMENT, IN WEBER COUNTY, UTAH, HAS BEEN DRAWN CORRECTLY TO THE FULL AND COMPLETE INFORMATION OF THE PUBLIC. THE SURVEYOR HAS REVIEWED THE DESCRIBED LANDS INCLUDED IN SAID SUBDIVISION, BASED UPON DATA COMPILED FROM THE RECORDS OF THE SURVEYOR, AND HAS CONCLUDED THAT THE REQUIREMENTS OF STATUTES AND ORDINANCES OF WEBER COUNTY CONCERNING ZONING REQUIREMENTS REGARDING LOT ADJUSTMENTS HAVE BEEN COMPLIED WITH.

SIGNED THIS 11/11 DAY OF NOVEMBER, 2014.

7755359
CHAD A. ANDERSON
UTAH LICENSE NUMBER

OWNERS DEDICATION AND CERTIFICATION
WE, THE UNDERSIGNED, HAVE SET APART AND SUBDIVIDED THE SAME INTO LOTS AND STREETS (PRIVATE STREETS, PRIVATE RIGHTS-OF-WAY AS SHOWN ON THE PLAT AND NAME SAID BAILEY ACRES CLUSTER SUBDIVISION PHASE 1, 2ND AMENDMENT, IN WEBER COUNTY, UTAH, AS REPRESENTED ON THIS PLAT, AND THAT THIS PART OF BAILEY ACRES CLUSTER SUBDIVISION PHASE 1, 2ND AMENDMENT, IN WEBER COUNTY, UTAH, HAS BEEN DRAWN CORRECTLY TO THE FULL AND COMPLETE INFORMATION OF THE PUBLIC. THE SURVEYOR HAS REVIEWED THE DESCRIBED LANDS INCLUDED IN SAID SUBDIVISION, BASED UPON DATA COMPILED FROM THE RECORDS OF THE SURVEYOR, AND HAS CONCLUDED THAT THE REQUIREMENTS OF STATUTES AND ORDINANCES OF WEBER COUNTY CONCERNING ZONING REQUIREMENTS REGARDING LOT ADJUSTMENTS HAVE BEEN COMPLIED WITH.

SIGNED THIS 11/11 DAY OF NOVEMBER, 2014.

ACKNOWLEDGMENT
STATE OF UTAH
COUNTY OF WEBER

ON THE 11th DAY OF NOVEMBER, 2014, PERSONALLY APPEARED MICHAEL S. LATIN TRUSTEE (AND SIGNED) OF THE ABOVE OTHERS' DEEDATION AND CERTIFICATION, FREELY, VOLUNTARILY, AND FOR THE PURPOSES THEREIN MENTIONED.

COMMISSION EXPIRES 11/11/14

ACKNOWLEDGMENT
STATE OF UTAH
COUNTY OF WEBER

ON THE 11th DAY OF NOVEMBER, 2014, PERSONALLY APPEARED CHAD A. ANDERSON (AND SIGNED) OF THE ABOVE OTHERS' DEEDATION AND CERTIFICATION, FREELY, VOLUNTARILY, AND FOR THE PURPOSES THEREIN MENTIONED.

COMMISSION EXPIRES 11/11/14

Project Info.
Designer: E. BOEHE
Date: 09-08-14
Name: CHAD A. ANDERSON
SHEET: PH.1.2 AND PH.1.3
Revision: 11/11/2014
Number: 6395-01
Checked: T-620

WEBER COUNTY RECORDER
I HEREBY CERTIFY THAT THE SOILS, PERCOLATION RATES, AND WATER RIGHTS INFORMATION HAS BEEN REVIEWED AND APPROVED FOR ON-SITE WASTEWATER DISPOSAL SYSTEMS.

SIGNED THIS 11/11 DAY OF NOVEMBER, 2014.

RECORDED FOR:
WEBER-MORGAN HEALTH DEPARTMENT

WEBER COUNTY ENGINEER
I HEREBY CERTIFY THAT THE REQUIRED PUBLIC SUBDIVISION CONFORM WITH THE COUNTY STANDARDS AND SPECIFICATIONS FOR THE INSTALLATION OF THESE IMPROVEMENTS FOR THE INSTALLATION OF THESE IMPROVEMENTS.

SIGNED THIS 11/11 DAY OF NOVEMBER, 2014.

CHAIRMAN, WEBER COUNTY ENGINEER

WEBER COUNTY COMMISSION ACCEPTANCE
THIS IS TO CERTIFY THAT THIS SUBDIVISION PLAT, THE FINANCIAL GUARANTEE OF PUBLIC IMPROVEMENTS, AND THE SUBDIVISION RECORDS, THEREIN ARE HEREBY APPROVED AND ACCEPTED BY THE COMMISSIONERS OF WEBER COUNTY, UTAH.

SIGNED THIS 11/11 DAY OF NOVEMBER, 2014.

CHAIRMAN, WEBER COUNTY COMMISSION

WEBER COUNTY PLANNING COMMISSION APPROVAL
I HEREBY CERTIFY THAT THIS SUBDIVISION PLAT WAS DULY APPROVED BY THE WEBER COUNTY PLANNING COMMISSION ON THIS 11/11 DAY OF NOVEMBER, 2014.

SIGNED THIS 11/11 DAY OF NOVEMBER, 2014.

CHAIRMAN, WEBER COUNTY PLANNING COMMISSION

WEBER COUNTY ATTORNEY
I HAVE EXAMINED THE FINANCIAL GUARANTEE AND OTHER DOCUMENTS SUBMITTED TO THIS OFFICE AND HAVE INVESTIGATED BY THIS OFFICE AND HAVE APPROVED FOR ON-SITE WASTEWATER DISPOSAL SYSTEMS.

SIGNED THIS 11/11 DAY OF NOVEMBER, 2014.

WEBER COUNTY ATTORNEY

WEBER COUNTY SURVEYOR
I HEREBY CERTIFY THAT THE WEBER COUNTY SURVEYOR'S CORRECTNESS, SECTION CORNER DATA, AND FOR HARMONY WITH LINES AND MONUMENTS ON RECORD IN COUNTY RECORDS HAS BEEN REVIEWED AND APPROVED BY THE LICENSED LAND SURVEYOR DOES NOT ASSUME ANY LIABILITY THEREWITH RESPONSIBILITIES AND OBLIGATIONS OF THE SURVEYOR. SIGNED THIS 11/11 DAY OF NOVEMBER, 2014.

WEBER COUNTY HEALTH DEPARTMENT
I HEREBY CERTIFY THAT THE SOILS, PERCOLATION RATES, AND WATER RIGHTS INFORMATION HAS BEEN REVIEWED AND APPROVED FOR ON-SITE WASTEWATER DISPOSAL SYSTEMS.

SIGNED THIS 11/11 DAY OF NOVEMBER, 2014.

WEBER-MORGAN HEALTH DEPARTMENT