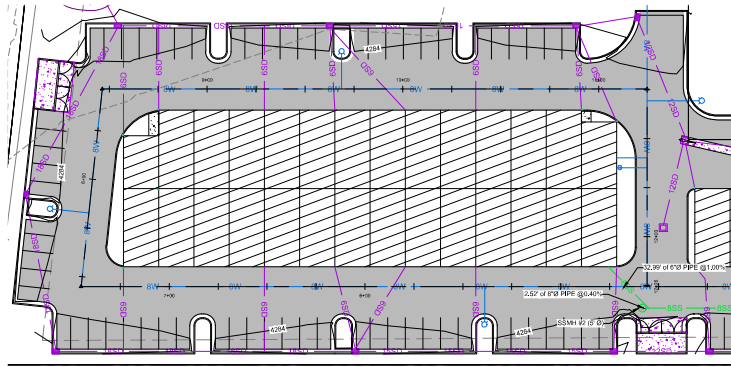
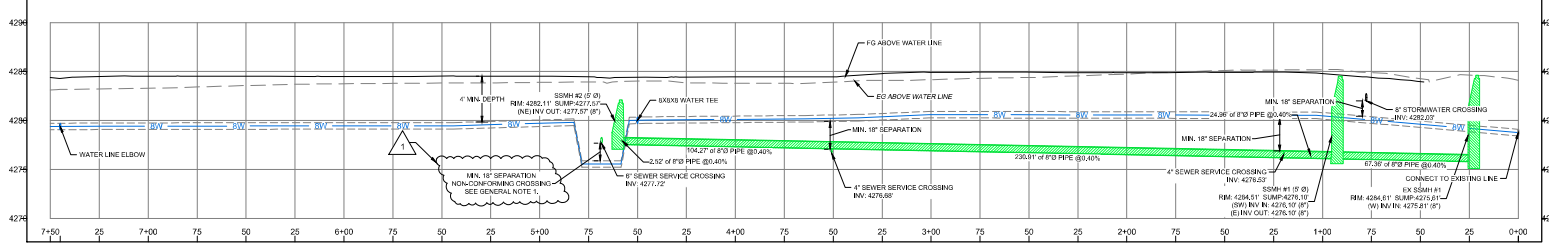
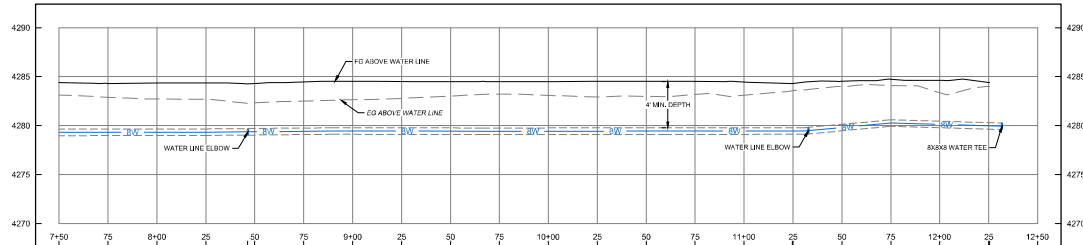


WATER LINE PROFILE

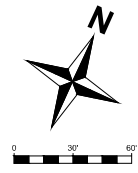


WATER LINE PROFILE



GENERAL NOTES:

- NONCONFORMING WATER AND SEWER CROSSINGS MAY BE MITIGATED BY PROVIDING A WATER TEE CAUSING FIRE EACH CROSSING FOR A MINIMUM DISTANCE OF 10 FEET HORIZONTAL FROM THE CROSSING. THIS DISTANCE IS MEASURED PERPENDICULAR FROM THE WATER MAIN. THE REQUEST FOR EXCEPTION MUST BE SUBMITTED BY THE DISTRICT ENGINEER.
- WATER LINE INSTALLATIONS SHALL CONFORM TO BONA VISTA STANDARDS FOR CULINARY WATER.



Know what's below. Call 811 before you dig.

811
BLUES TAKES OF UTAH
 UTILITY NOTIFICATION CENTER, INC.
 www.bluestakes.org
 1-800-662-4111

THESE PLANS AND SPECIFICATIONS ARE THE PROPERTY OF CIVIL SOLUTIONS GROUP, INC. AND SHALL NOT BE REPRODUCED, REBROADCAST, OR USED ON ANY OTHER PROJECT OTHER THAN THE PROJECT SPECIFICALLY DESIGNED FOR. WITHOUT WRITTEN PERMISSION, THE OWNERS AND ENGINEERS OF CIVIL SOLUTIONS GROUP, INC. DISCLAIM ANY LIABILITY FOR ANY CHANGES OR MODIFICATIONS MADE TO THESE PLANS ON THE JOB OR THEREON WITHOUT THEIR CONSENT. THESE PLANS ARE DRAWN TO SCALE WHEN PLOTTED ON A 24" X 36" SHEET OF PAPER. THESE PLANS ARE PRODUCED IN COLOR AND SHOULD BE PLOTTED AS SUCH.

| NO. | DATE | DESCRIPTION |
|-----|---------|---------------------|
| 1 | 4/20/24 | BONA VISTA COMMENTS |

PROJECT #: 23-059
 DRAWN BY: D FALSLEV
 PROJECT MANAGER: J DAY
 ISSUED: 4/26/2024



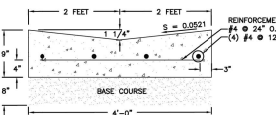
WATERLINE PLAN & PROFILE

C203

P:\2023\2500 - Rulon Small Flex Space\Civil\As-Built\250000 WATERLINE PLAN & PROFILE

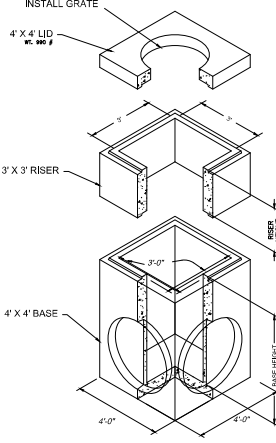


1 30" CATCH CURB & GUTTER
C501
NOT TO SCALE



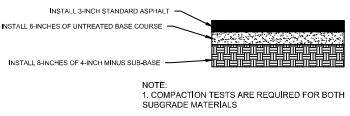
2 4" CONCRETE WATERWAY
C501
NOT TO SCALE

3 4" CONCRETE WATERWAY
C501
NOT TO SCALE

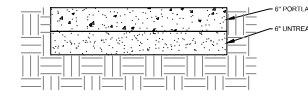


NOTE:
1. CATCH BASINS AND GRATE SHALL MEET ASTM C888 WITH HASHTO H5-SLOADING.
2. OPENINGS MAY BE LOCATED AS REQUIRED.
3. CATCH BASIN SHALL BE PRECAST OR CAST IN PLACE OF 3,000 PSI CONCRETE.

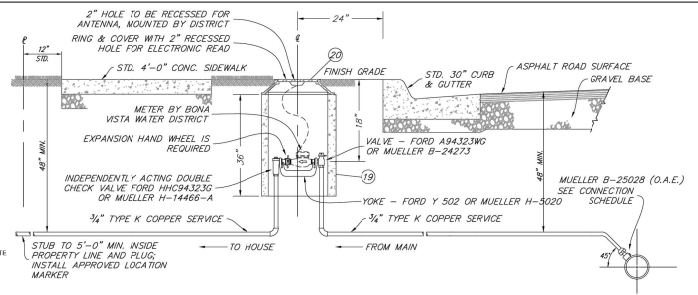
9 3x3' STORM DRAIN OUTLET STRUCTURE
C501
NOT TO SCALE



3 STANDARD DUTY ASPHALT PAVEMENT
C501
NOT TO SCALE



4 HEAVY DUTY CONCRETE PAVEMENT
C501
NOT TO SCALE



| NO. | DESCRIPTION | 3/4" SERVICE | 1" SERVICE |
|-----|--|--------------|---|
| 19 | 18"x36" METER BOX-CONCRETE OR CORRUGATED PVC (DOUBLE WALL) | | 24"x36" METER BOX-CONCRETE OR CORRUGATED PVC (DOUBLE WALL) |
| 20 | CAST IRON COVER W/ LOCKING NOT. (D & L SUPPLY MODEL L-2240-15) | | 24" MANHOLE RING & COVER W/ GASKET (D & L SUPPLY MODEL B-5024-CU) |

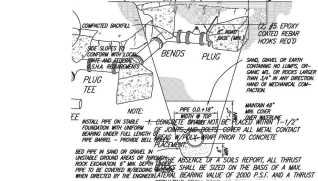
TYPICAL CULINARY WATER SERVICE CONNECTION

- OWNERS RESPONSIBILITY:**
THE OWNER OR CONTRACTOR SHALL PAY CONNECTION FEE AND SECURE PERMITS.
- THE OWNER OR CONTRACTOR SHALL PAY FOR ALL COSTS OF INSTALLATION INCLUDING ALL MATERIALS, SADDLE, RING & COVER, - METER PROVIDED BY BONA VISTA WATER DISTRICT) ALL EXCAVATION AND FILL, ASPHALT REPLACEMENT, WATER MAIN CONNECTION, AND LABOR.
 - NECESSARY PIPE, YOKE/SETTER, CHECK VALVE, METER, ANGLE VALVE & EXPANSION FITTING, METER BOX, CAST IRON RING & COVER, - METER PROVIDED BY BONA VISTA WATER DISTRICT) ALL EXCAVATION AND FILL, ASPHALT REPLACEMENT, WATER MAIN CONNECTION, AND LABOR.
 - INSPECTED AND APPROVED BY BONA VISTA WATER DISTRICT.
 - PROPER GRADE IS THE OWNERS/CONTRACTORS RESPONSIBILITY. THE DISTRICT WILL NOT SET METER UNLESS THE YOKE AND METER BOX ARE AT THE PROPER GRADE.
 - WORK MAY BE DONE BY OWNER OR LICENSED PLUMBER OR CONTRACTOR. ALL WORK IS THE RESPONSIBILITY OF THE OWNER.
 - OWNER OR CONTRACTOR SHALL CALL BLUE STAKES OR DIRECT TO UTILITY COMPANIES FOR LOCATION OF UNDERGROUND GAS, TELEPHONE, ELECTRIC, CABLE T.V., IRRIGATION, PETROLEUM, AND SEWER LINES BEFORE DIGGING.
- DISTRICTS RESPONSIBILITY:**
- BONA VISTA WATER DISTRICT WILL FURNISH AND INSTALL METER AT NO COST.
 - THE DISTRICT WILL LOCATE WATER MAIN PRIOR TO EXCAVATION - 24 HOUR NOTICE.
 - THE OWNER WILL MAKE THE TAP ON THE WATER MAIN INCLUDING FURNISHING THE CORPORATION STOP.
 - THE DISTRICT WILL FURNISH AND SET WATER METER IN CUSTOMERS YOKE.
 - THE DISTRICT WILL INSPECT AND APPROVE ALL WORK - 24 HOUR NOTICE.

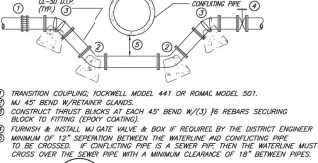
| MATERIAL | SIZE | CONNECTION @ |
|-------------------------------|--|--------------|
| STEEL AND/OR ASBESTOS CEMENT | #8" ROMAC 101 M | |
| STEEL AND/OR ASBESTOS CEMENT | #6" ROMAC 202 N DOUBLE STRAP | |
| CAST IRON AND/OR DUCTILE IRON | #4" CORPORATION STOP-MUELLER B-2502B | |
| CAST IRON AND/OR DUCTILE IRON | #6" CORPORATION STOP-MUELLER B-2502B | |
| PVC S-200 | #8" ROMAC 101 M (FOR PVC) W/ 1/2" CORPORATION STOP MUELLER B-2502B | |
| PVC S-200 | #6" ROMAC 202 N DBL. STRAP (FOR PVC) W/ 1/2" CORR. STOP | |
| PVC CLASS 200 | #8" CONTROLLED Q.D. SADDLE | |

- ① SADDLE CAN BE COMPARABLE TO ABOVE BUT SAME CORROSION PROOF BODY AND WIDE STRAPS ARE REQUIRED.
② ALL NEW SUB CONNECTION TAPS SHALL BE DONE BY DEVELOPER, DISTRICT PROJECT TAPS SHALL BE COORDINATED BY THE DISTRICT.

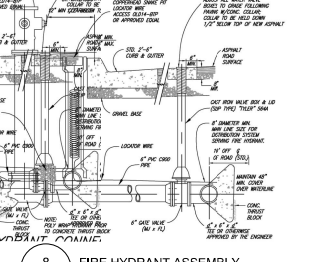
5 CULINARY WATER SERVICE
C501
NOT TO SCALE



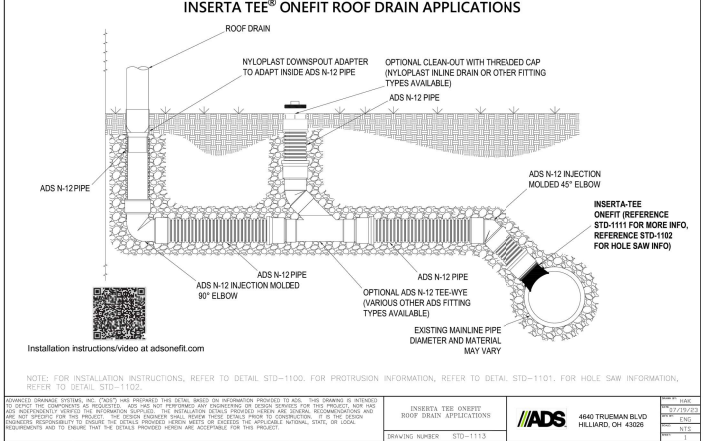
6 UTILITY TRENCH
C501
NOT TO SCALE



7 CULINARY WATER LOOP
C501
NOT TO SCALE



8 FIRE HYDRANT ASSEMBLY
C501
NOT TO SCALE

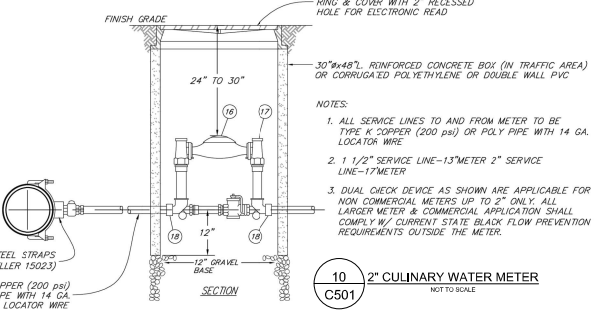


NOTE: FOR INSTALLATION INSTRUCTIONS, REFER TO DETAIL STD-1100. FOR PROTRUSION INFORMATION, REFER TO DETAIL STD-1101. FOR HOLE SAW INFORMATION, REFER TO DETAIL STD-1102.

| | |
|---|---|
| UNLESS OTHERWISE SPECIFIED, ALL DIMENSIONS ARE IN INCHES UNLESS OTHERWISE SPECIFIED TO BE IN METERS. DIMENSIONS ARE SHOWN TO CENTER UNLESS OTHERWISE SPECIFIED. | UNLESS OTHERWISE SPECIFIED, ALL DIMENSIONS ARE IN INCHES UNLESS OTHERWISE SPECIFIED TO BE IN METERS. DIMENSIONS ARE SHOWN TO CENTER UNLESS OTHERWISE SPECIFIED. |
| UNLESS OTHERWISE SPECIFIED, ALL DIMENSIONS ARE IN INCHES UNLESS OTHERWISE SPECIFIED TO BE IN METERS. DIMENSIONS ARE SHOWN TO CENTER UNLESS OTHERWISE SPECIFIED. | UNLESS OTHERWISE SPECIFIED, ALL DIMENSIONS ARE IN INCHES UNLESS OTHERWISE SPECIFIED TO BE IN METERS. DIMENSIONS ARE SHOWN TO CENTER UNLESS OTHERWISE SPECIFIED. |

11 INSERTA TEE ROOF DRAIN
C501
NOT TO SCALE

| NO. | DESCRIPTION | JOINT TYPE | 1 1/2" LINE | 2" LINE |
|-----|--|------------|-------------|---------|
| 16 | WATER METER | FL | 1 1/2" | 2" |
| 17 | "MUELLER" B-2421-2 METER YOKE (18" HEIGHT) | | 1 1/2" | 2" |
| 18 | "MUELLER" T10 COMPRESSION CORR. COUPLING | | 1 1/2" | 2" |



10 2" CULINARY WATER METER
C501
NOT TO SCALE

| MARK | DATE | DESCRIPTION |
|------|------|-------------|
| | | |
| | | |
| | | |
| | | |

PROJECT #: 23-069
DRAWN BY: D.FALSLEV
PROJECT MANAGER: J. DAY
ISSUED: 4/30/2024



DETAILS

C501

