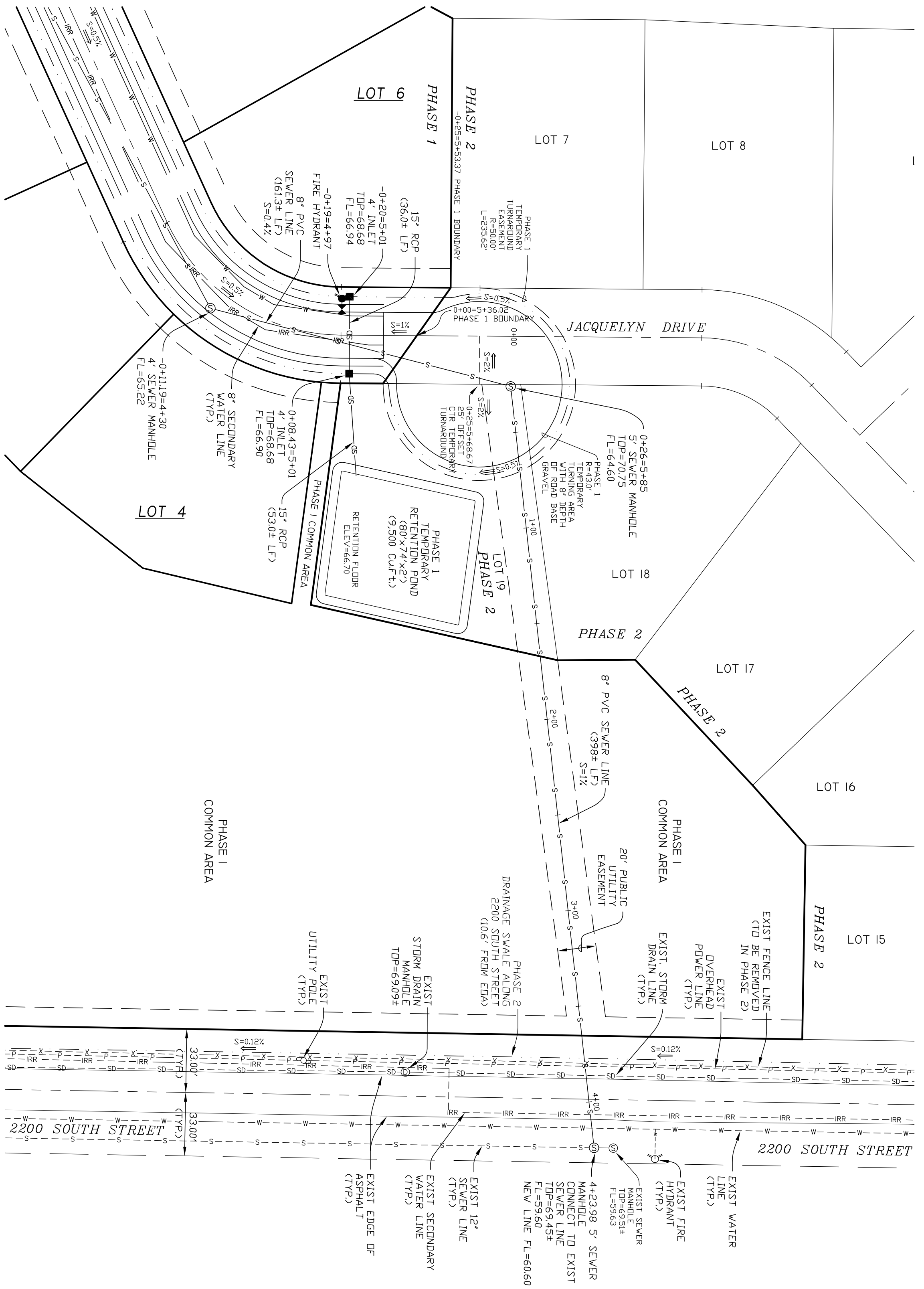
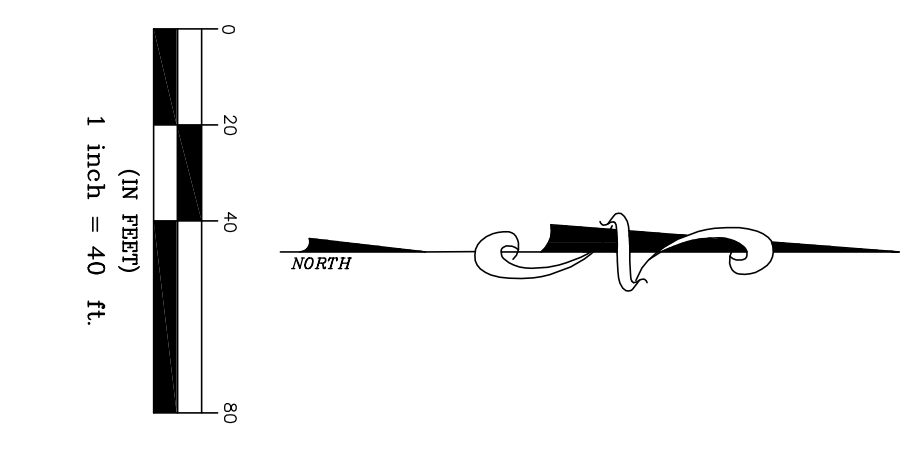
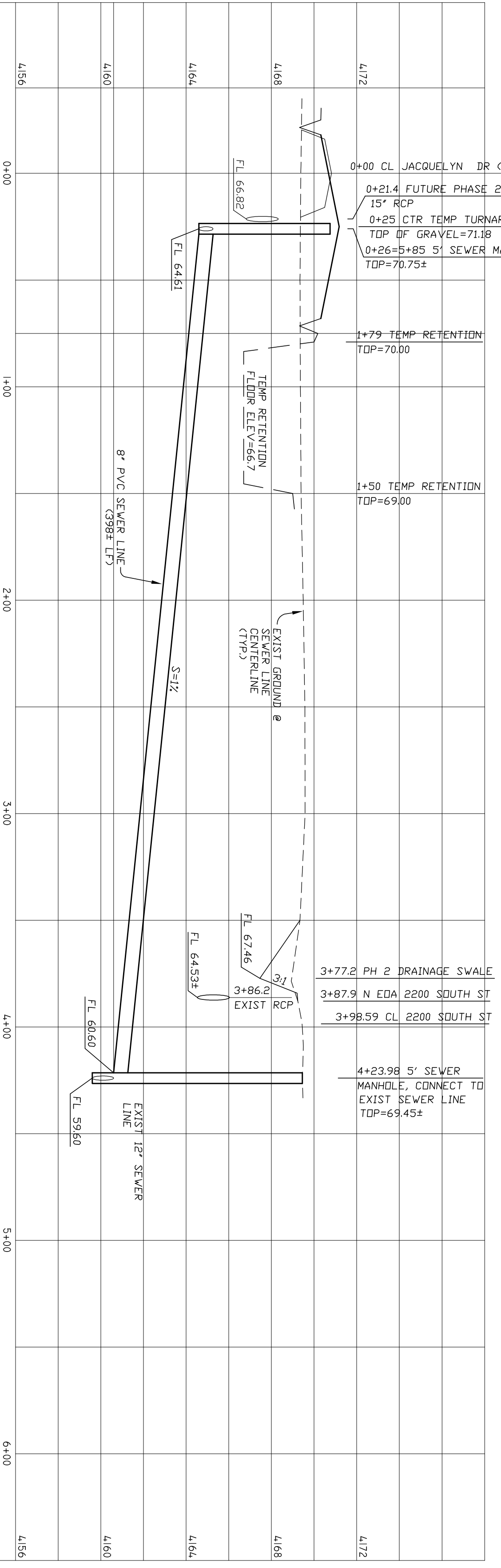


LEGEND

- CENTERLINE
- - - - - EXISTING DRAINAGE DITCH
- - - - - PROPOSED DRAINAGE DITCH/SWALE
- - - - - EXISTING FENCE LINE
- - - - - PROPOSED FENCE LINE
- - - - - EXISTING WATER LINE
- - - - - PROPOSED WATER LINE
- - - - - EXISTING SANITARY SEWER
- - - - - PROPOSED SANITARY SEWER
- - - - - EXISTING STORM DRAIN
- - - - - PROPOSED STORM DRAIN
- - - - - EXISTING IRRIGATION LINE
- - - - - PROPOSED IRRIGATION LINE
- - - - - EXISTING POWER LINE
- - - - - EXISTING 1" CONTOUR
- - - - - EXISTING 5" CONTOUR
- - - - - EXISTING STORM DRAIN MANHOLE
- ⊙ EXISTING INLET
- ⊙ PROPOSED STORM DRAIN MANHOLE
- ⊙ EXISTING DRAINAGE FLOW
- ⊙ PROPOSED DRAINAGE FLOW
- ⊙ EXISTING SIGN
- ⊙ PROPOSED SIGN
- ⊙ EXISTING SEWER MANHOLE
- ⊙ PROPOSED SEWER MANHOLE
- ⊙ EXISTING FIRE HYDRANT
- ⊙ PROPOSED FIRE HYDRANT
- ⊙ EXISTING VALVE
- ⊙ PROPOSED VALVE
- ⊙ EXISTING STREET MONUMENT
- ⊙ PROPOSED STREET MONUMENT
- ⊙ EXISTING TELEPHONE PEDESTAL
- ⊙ PROPOSED TELEPHONE PEDESTAL
- ⊙ EXISTING UTILITY POLE
- ⊙ EXISTING GROUND ELEVATION
- ⊙ PROPOSED GROUND ELEVATION
- ⊙ EXISTING EDGE OF ASPHALT
- ⊙ PROPOSED EDGE OF ASPHALT
- ⊙ EXISTING TOP OF CURB
- ⊙ PROPOSED TOP OF CURB
- ⊙ EXISTING FLOW LINE
- ⊙ PROPOSED FLOW LINE
- ⊙ EXISTING TOP OF DETENTION
- ⊙ PROPOSED TOP OF DETENTION
- ⊙ EXISTING LINEAR FEET
- ⊙ PROPOSED LINEAR FEET
- ⊙ WESTERN RIVER BIRCH CLUMPS
- ⊙ DECORATIVE GRASS
- ⊙ BARBERRY SHRUB (5 GALLON)
- ⊙ RED-LEAF PLUM SHRUB (5 GALLON)
- ⊙ SUNRISE FORSYTHIA SHRUB (5 GALLON)
- ⊙ SCOTCH PINE (2" CALIPER)
- ⊙ FLOWERING PEAR (2" CALIPER)
- ⊙ SPRING SNOW CRABAPPLE (2" CALIPER)
- ⊙ AUTUMN BLAZE MAHLE (2" CALIPER)
- ⊙ KENTUCKY BLUE BLEND
- ⊙ GRASS



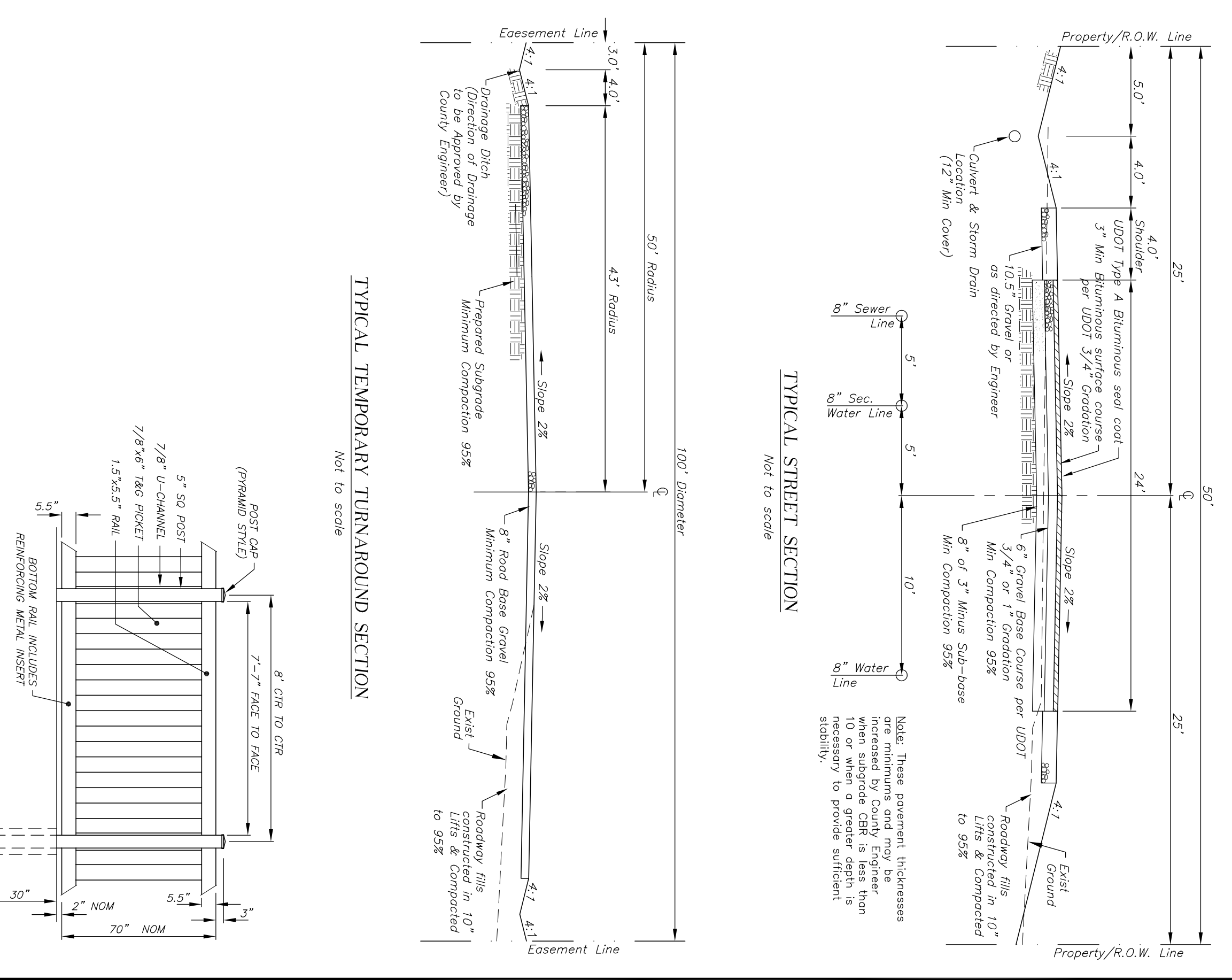
NEW SEWER LINE FROM 2200 SOUTH ST TO JACQUELYN DRIVE



SCALES:
HORIZONTAL 1"=40'
VERTICAL 1"=4'

GENERAL NOTES

1. EXISTING IMPROVEMENTS ARE SHOWN AS ACCURATELY AS POSSIBLE ACCORDING TO AVAILABLE INFORMATION. IT SHALL BE THE RESPONSIBILITY OF THE CONTRACTOR TO VERIFY THE LOCATION AND ELEVATION OF ALL UTILITIES SHOWN OR NOT SHOWN ON THE PLANS.
2. ALL CONSTRUCTION SHALL BE IN ACCORDANCE WITH WEBER COUNTY STANDARDS AND SPECIFICATIONS. ANY DEVIATION FROM THESE STANDARDS SHALL BE APPROVED IN ADVANCE BY THE COUNTY ENGINEER OR A REPRESENTATIVE OF WEBER COUNTY.



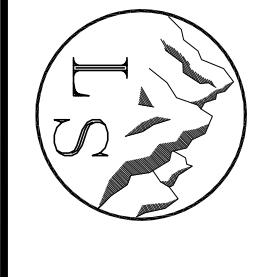
TYPICAL FENCE SECTION ELEVATION
Not to scale

TYPICAL GRAVEL TRAIL SECTION
Not to scale

REVISIONS

1) 04-08-2014 L.A.	5)
2) 08-05-2014 L.A.	6)
3) 10-10-2014 L.A.	7)
4) _____	8)

DRAWN BY: L.A.	DATE: 01-22-2014
CHECKED BY: D.B.	SCALE: AS SHOWN
JOB NO. 30101MP-0021014	



LANDMARK SURVEYING, INC.
A COMPLETE LANDSURVEYING SERVICE
4646 S. 3500 W. #A-3, WEST HAVEN, UTAH 84401
PHONE 801-731-4075 FAX 801-731-8506
LANDMARKSURVEY.UTAH.COM

IMPROVEMENT PLAN
DEVELOPER: CRAIG STANDING PH 801-540-4989

JACQUELYN ESTATES CLUSTER SUBDIVISION PH 1
LOCATED IN THE N.W. 1/4 OF SECTION 29, T.6N., R.2W., S.LB.&M.
WEBER COUNTY, UTAH