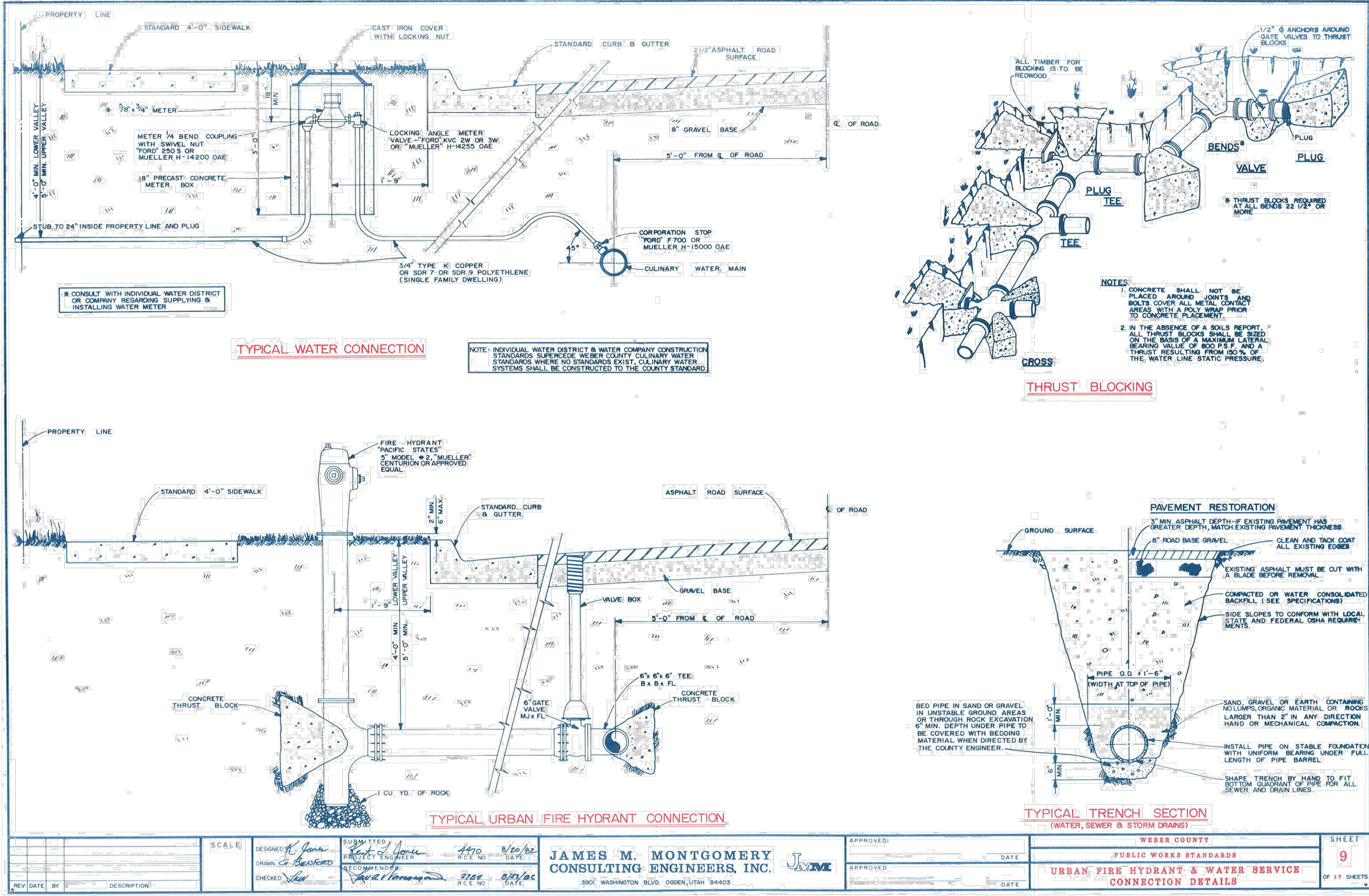
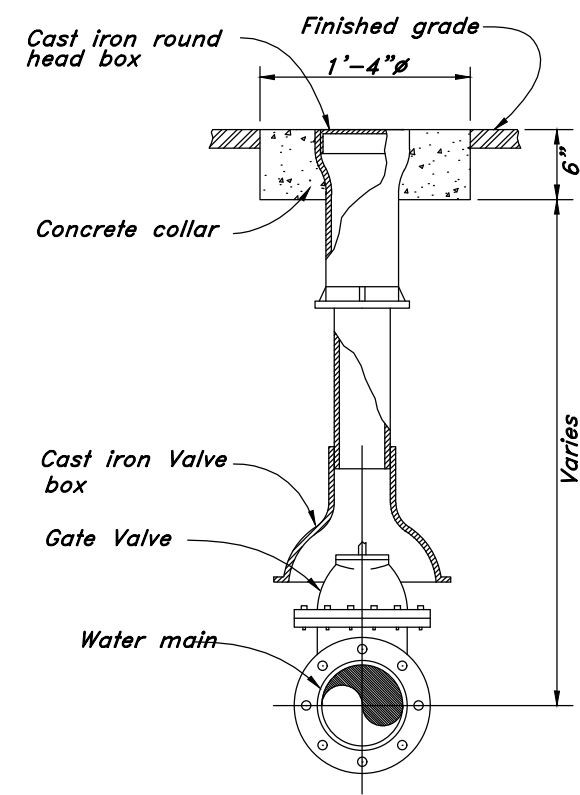


Project Name: 4393 Scadden-Kanesville Crossing Option 6 Fence.dwg Save Date: April 4, 2024 11:35 AM Sheet: W2 Water Details Sh. 10 Print Date: 4/14/2024
This plot and associated documents are "PRELIMINARY, NOT FOR CONSTRUCTION, RECORDING PURPOSES, OR IMPLEMENTATION" and are NOT FINAL and shall not be used in construction, nor to be recorded or filed, nor implemented or used as a final product by the client or public agency or local entity. Some Local Entities require signed and dated drawings by the Licensed Professional in charge of Professional Licensing. Therefore, if this document is unsigned, it is a preliminary document(s) and is not intended for and shall not be used in construction, nor to be recorded or filed, nor implemented or used as a final product. This preliminary document is still in preliminary form, in such case(s) these drawings may appear as a final, stamped, and dated product, however, without the express approval of the Local Entity either by signing in the appropriate location or fixing a Local Entity Stamp herein these drawings remain Preliminary-Not Final and/or remain a review document subject to change or modification.



A Typical Culinary Water Details
W2 Not to Scale



B Typical Gate Valve
W2 Not to Scale

WALL ENGINEERING, INC

55 SOUTH MAIN, NO. 2
P.O. BOX 39
FILLMORE, UTAH 84631
(435) 864-7503 CELL
wallengineering@frontier.net

Kanesville Crossing
A Multiple Use Development, Unincorporated Weber County, Utah

Culinary Water Details

W2

10 of 13