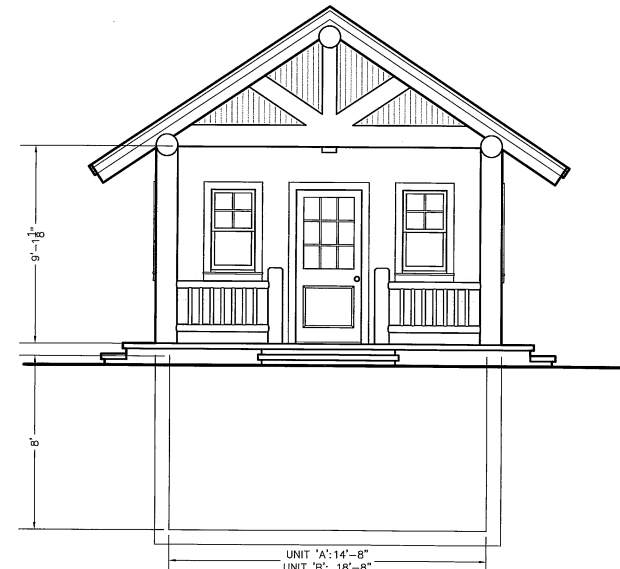
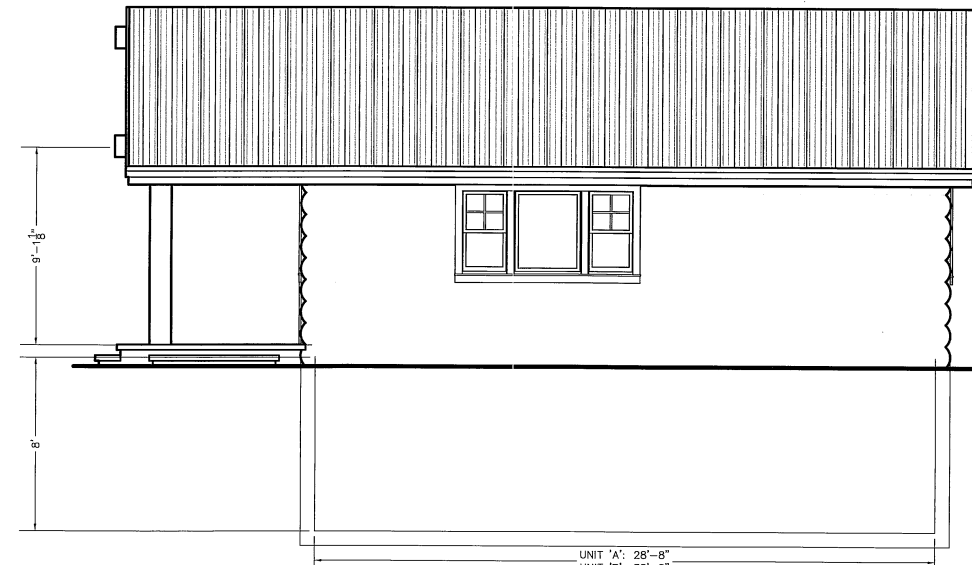


# LITTLE BEAR SUBDIVISION LOT 3, 1ST AMENDMENT

A PART OF THE NORTHWEST 1/4 OF SECTION 34,  
TOWNSHIP 7 NORTH, RANGE 1 EAST, SLB&M, U.S. SURVEY  
WEBER COUNTY, UTAH \PDECEMBER, 2013



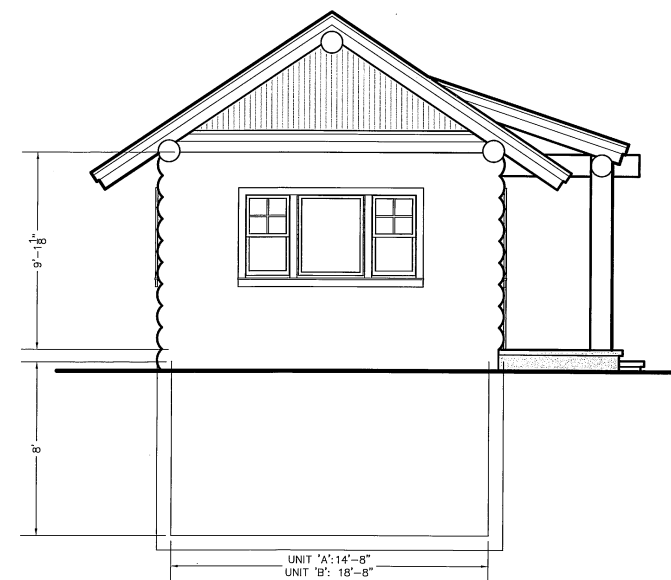
**A B** Front Entry Elevation (Log Veneer)  
NOT TO SCALE



**A B** Front Entry - Side Elevation (Log Veneer)  
NOT TO SCALE




**A B** Side Entry Elevation (Log Veneer)  
NOT TO SCALE



**A B** Side Entry - Front Elevation (Log Veneer)  
NOT TO SCALE

Prepared By:



**Gardner Engineering**

- > PLANNING
- > CIVIL ENGINEERING
- > LAND SURVEYING

5875 South Adams Ave. Parkway, Suite 200 • Ogden, UT 84405  
Phone (801) 476-0202 • Fax (801) 476-0066

www.gardnereengineering.net

SHEET 2 OF 3

COUNTY RECORDER

ENTRY NO. 2676314 FEE PAID \_\_\_\_\_

RECORDED \_\_\_\_\_ FILED FOR RECORD AND \_\_\_\_\_ AT \_\_\_\_\_

IN \_\_\_\_\_ BOOK OF OFFICIAL RECORDS, PAGE \_\_\_\_\_ RECORDED

FOR \_\_\_\_\_

BY: \_\_\_\_\_ COUNTY RECORDER

DEPUTY \_\_\_\_\_