

PART OF THE N.W. 1/4 OF SEC. 27,  
AND S.W. 1/4 OF SEC. 22, T.7N., R.1E., S.L.B. & M.

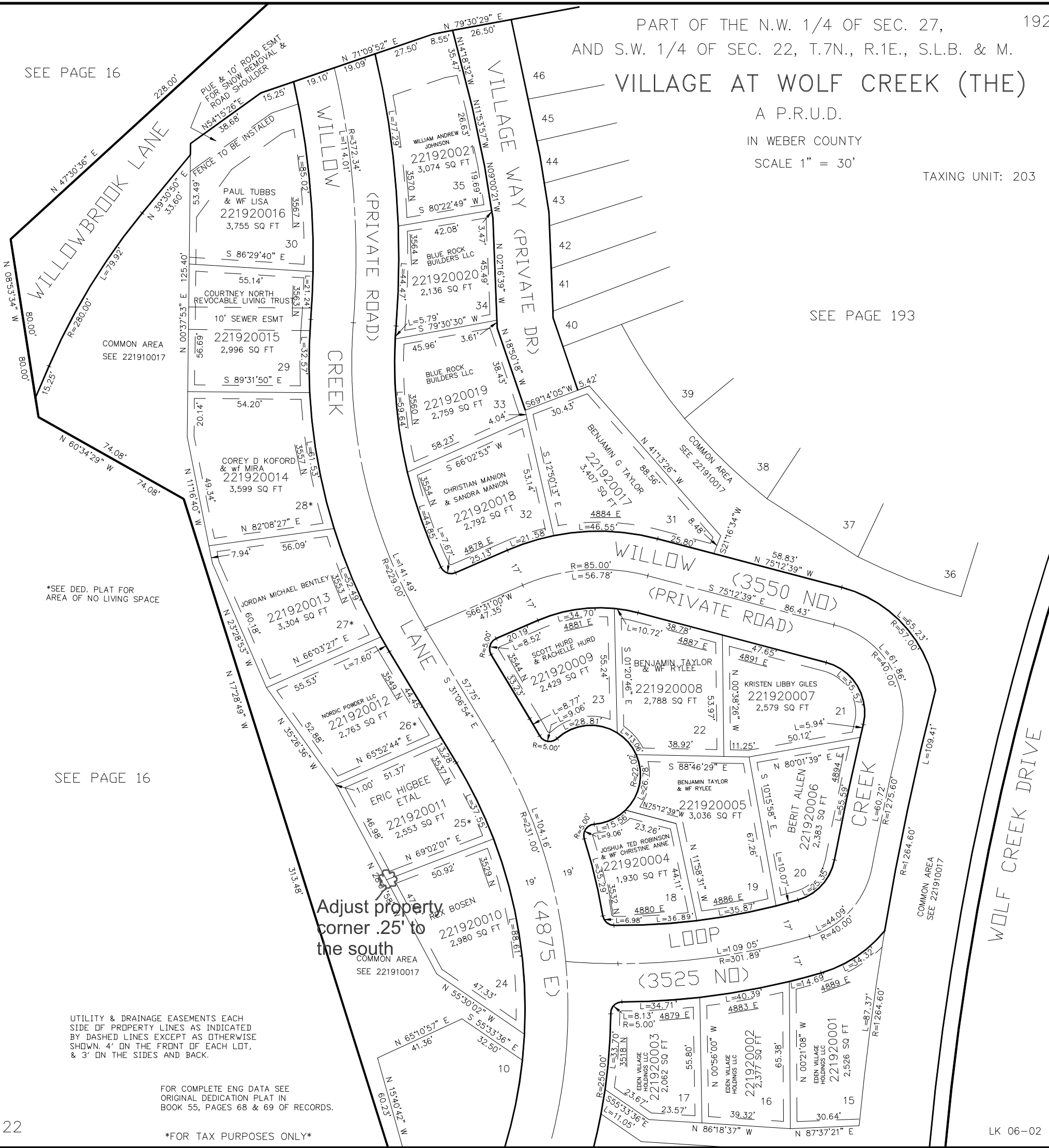
# VILLAGE AT WOLF CREEK (THE)

A P.R.U.D.  
IN WEBER COUNTY  
SCALE 1" = 30'

TAXING UNIT: 203

SEE PAGE 193

SEE PAGE 16



\*SEE DED. PLAT FOR AREA OF NO LIVING SPACE

SEE PAGE 16

Adjust property corner .25' to the south  
COMMON AREA SEE 221910017

UTILITY & DRAINAGE EASEMENTS EACH SIDE OF PROPERTY LINES AS INDICATED BY DASHED LINES EXCEPT AS OTHERWISE SHOWN. 4' ON THE FRONT OF EACH LDT, & 3' ON THE SIDES AND BACK.

FOR COMPLETE ENG DATA SEE ORIGINAL DEDICATION PLAT IN BOOK 55, PAGES 68 & 69 OF RECORDS.

\*FOR TAX PURPOSES ONLY\*