

Scale: 1" = 150'

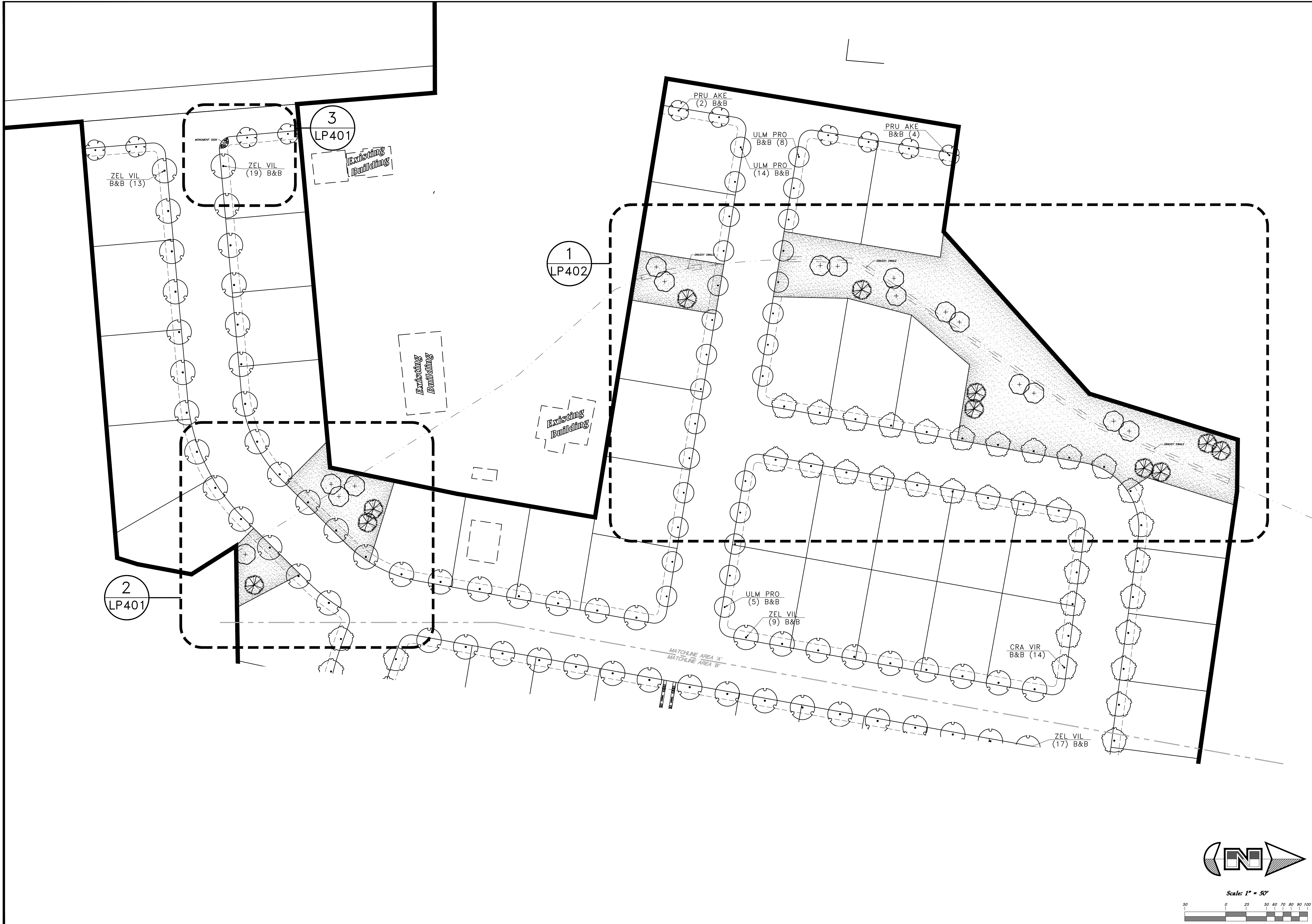
**Overall Landscape Plan**  
**Riverbend**  
A part of Section Southeast Quarter of 16 and the West Half of  
Section 15, T6N, R2W, SLB&M, U.S. Survey

**GREAT BASIN ENGINEERING**  
5746 SOUTH 1475 EAST OGDEN, UTAH 84403  
MAIN (801)394-4515 S.L.C. (801)521-0222 FAX (801)392-7544  
WWW.GREATBASINENGINEERING.COM

June, 2021  
SHEET NO.  
**LP100**  
21N724

REV	DATE	DESCRIPTION
1	6/8/2021	County Comments, Site Table

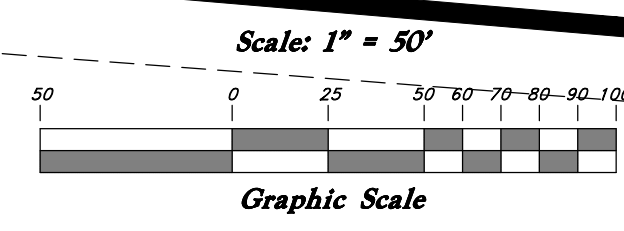
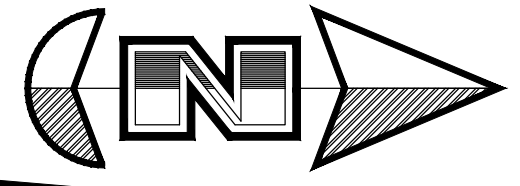
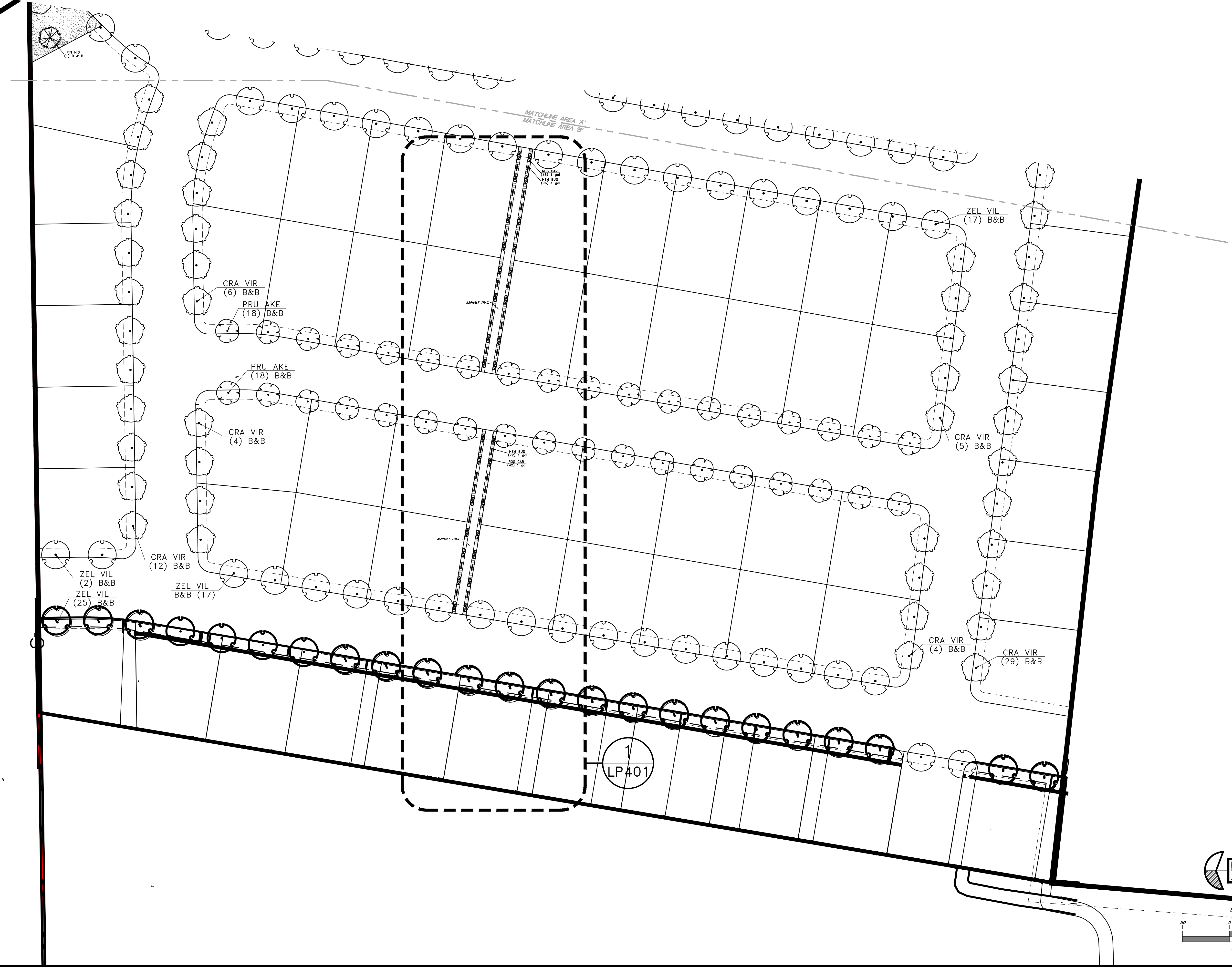




GREAT BASIN ENGINEERING	
5746 SOUTH 1475 EAST OGDEN, UTAH 84403 MAIN (801)394-4515 S.L.C. (801)521-0222 FAX (801)392-7544 WWW.GREATBASINENGINEERING.COM	
Overall Landscape Plan <b>Riverbend</b> A part of Section Southeast Quarter of 16 and the West Half of Section 15, T6N, R2W, SL&M, U.S. Survey	
June, 2021	
SHEET NO. <b>LP101</b>	
21N724	

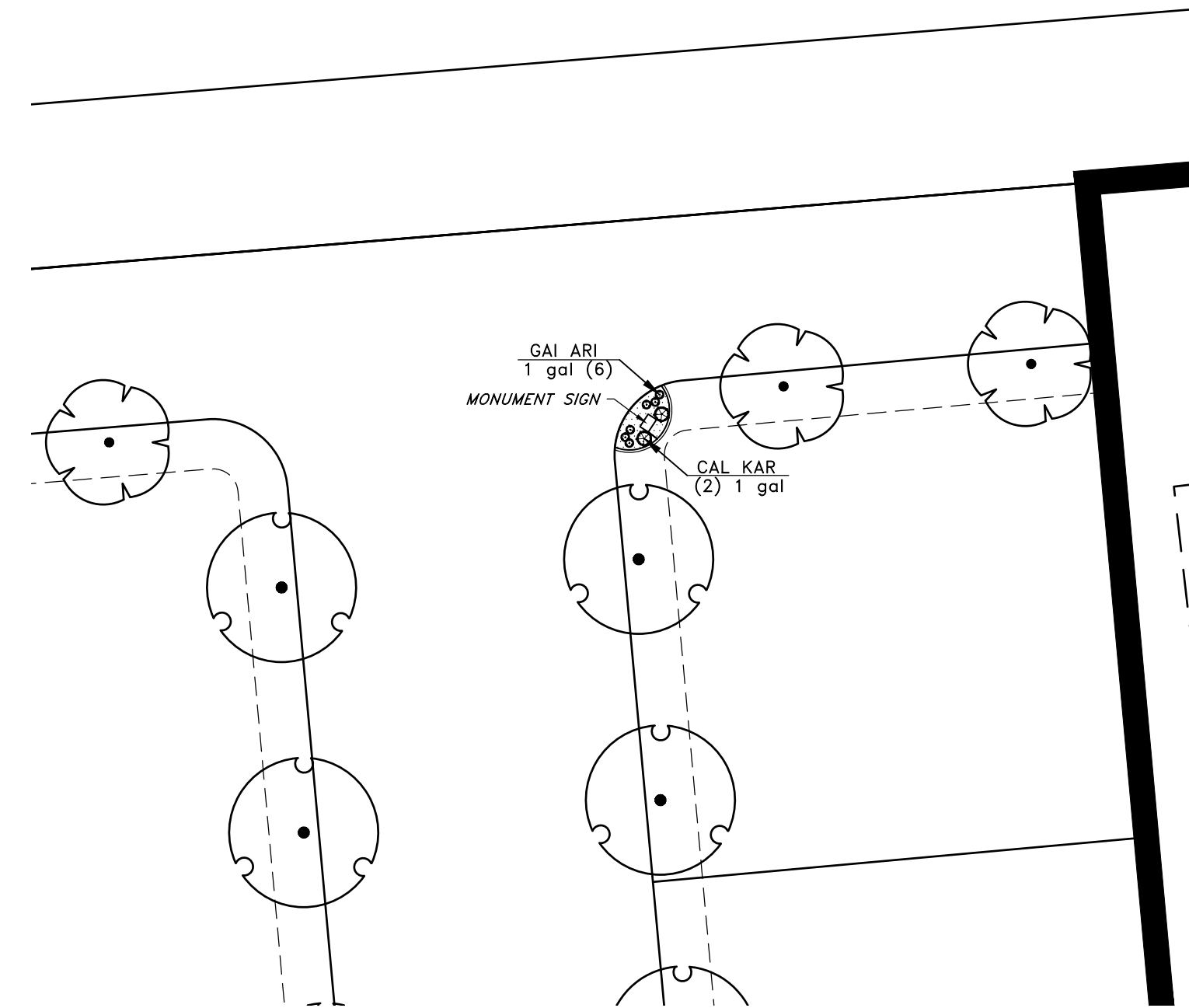
REV	DATE	DESCRIPTION
1	6/8/2021	County Comments, Site Table



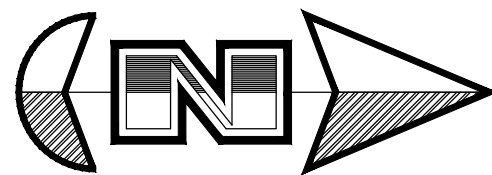
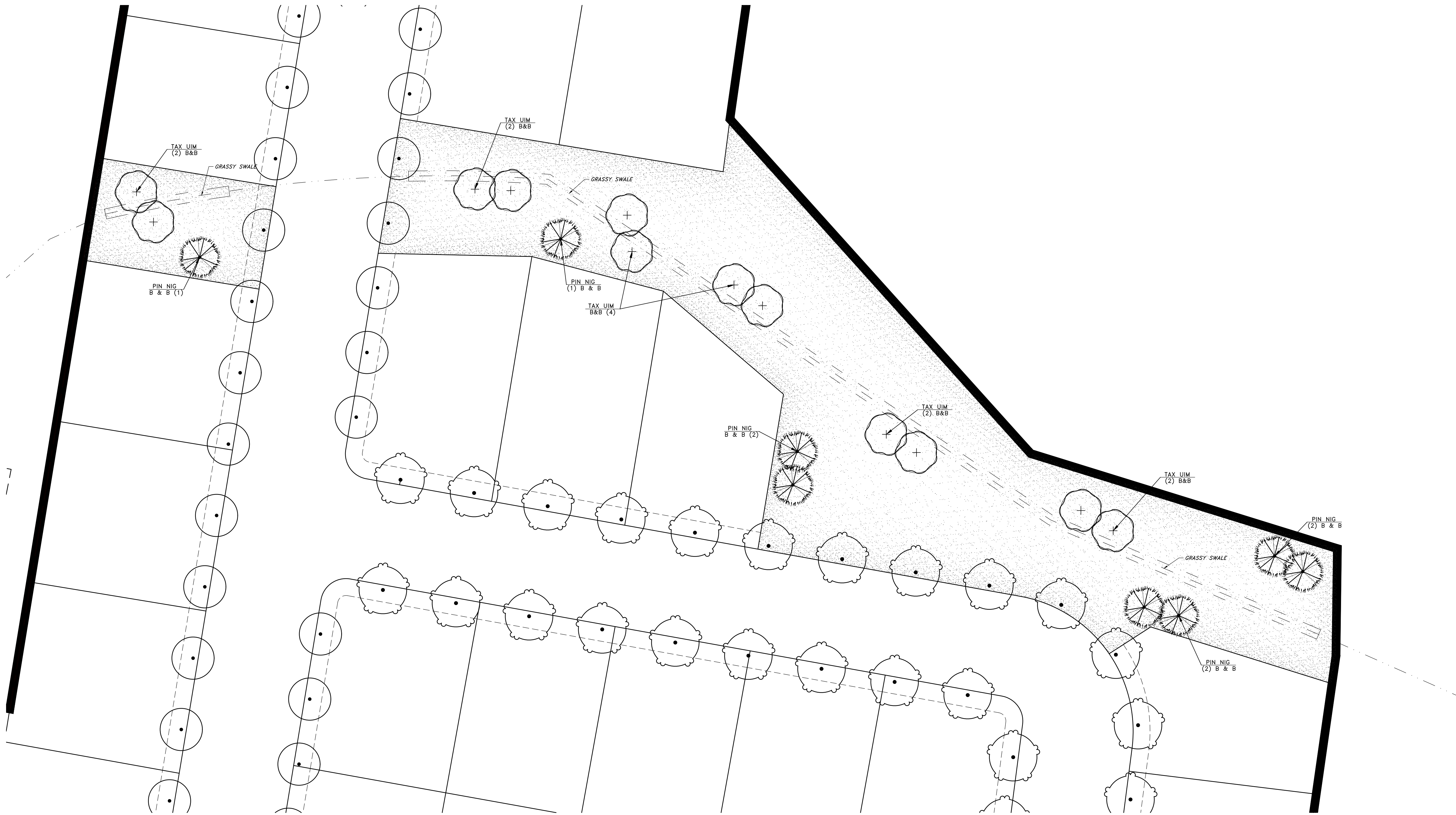


<b>Overall Landscape Plan</b>		<b>June, 2021</b>	
<b>Riverbend</b>		<b>LP102</b>	
A part of Section Southeast Quarter of 16 and the West Half of Section 15, T6N, R2W, SL&M, U.S. Survey		SHEET NO.	
		21N724	
		GREAT BASIN ENGINEERING	
5746 SOUTH 1475 EAST OGDEN, UTAH 84403 MAIN (801)394-4515 S.L.C. (801)521-0222 FAX (801)392-7544 WWW.GREATBASINENGINEERING.COM			
REV	DATE	DESCRIPTION	Courtesy Comments, Site Table
1	6/8/2021		









1

REV	DATE	DESCRIPTION
1	6/8/2021	County Comments, Site Table

**GREAT BASIN  
ENGINEERING**

5746 SOUTH 1475 EAST OGDEN, UTAH 84403  
MAIN (801)394-4515 SLIC (801)521-0222 FAX (801)392-7544  
WWW.GREATBASINENGINEERING.COM

**Enlarged Landscape Plan**  
**Riverbend**  
A part of Section Southeast Quarter of 16 and the West Half of  
Section 15, T6N, R2W, SL&M, U.S. Survey

June, 2021  
SHEET NO.  
**LP402**  
21N724