

SHEET 1 OF 2

STAGECOACH

PART OF THE SOUTHWEST QUARTER OF THE SOUTHEAST

BASIS OF BEARING

A LINE BEARING SOUTH 89°12'03" EAST BETWEEN AND WEST QUARTER OF SECTION 21, TOWNSHIP LAKE BASE AND MERIDIAN, U.S. SURVEY, WAS USED FOR THIS SURVEY.

NARRATIVE

THE PURPOSE OF THIS PLAT IS TO DIVIDE THE PLAT INTO LOTS AND STREETS AS SHOWN. BOUNDARIES ESTABLISHED BY INFORMATION OF RECORD AND OCCUPATION ON THE GROUND. THE OVERALL PROPORTION OF THE QUARTER SECTION THERE

SHEET 2 OF 2

S00°42'26"W 2606.83' (RECORD)
S00°42'18"W 2607.01'

NORTH QUARTER CORNER OF
SECTION 21, TOWNSHIP 6 NORTH,
RANGE 2 WEST, SALT LAKE BASE
AND MERIDIAN, U.S. SURVEY
(FOUND 3" BRASS CAP DATED 1963
IN GOOD CONDITION)
SEE MONUMENT DETAIL 1

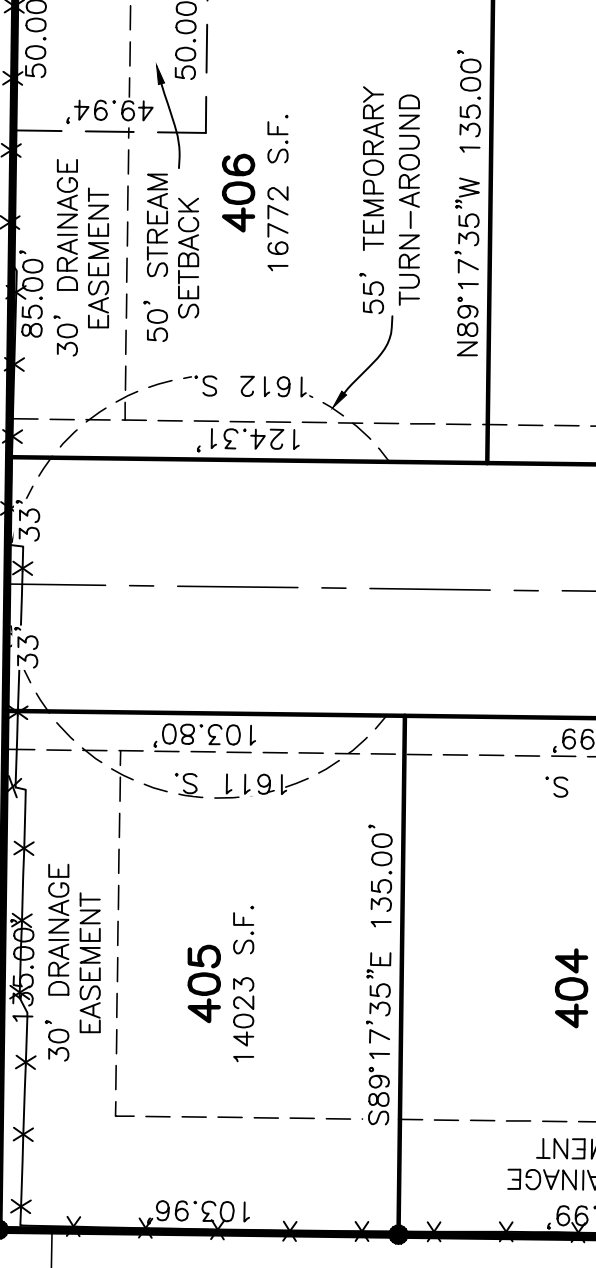
2652.14'

WEST QUARTER CORNER
OF SECTION 21, TOWNSHIP
6 NORTH, RANGE 2 WEST,
SALT LAKE BASE AND
MERIDIAN, U.S. SURVEY
(FOUND 3" BRASS CAP
MONUMENT DATED 2004
FLUSH WITH ROAD
SURFACE DATED 2004 IN
GOOD CONDITION)
SEE MONUMENT DETAIL 2

CENTER OF SECTION 21,
TOWNSHIP 6 NORTH, RANGE 2
WEST, SALT LAKE BASE AND
MERIDIAN, U.S. SURVEY (CALC'D,
NOT FOUND)

N00°42'18"E 1317.81'

SEE MONUMENT DETAIL 2



405
14023 S.F.

406
16772 S.F.