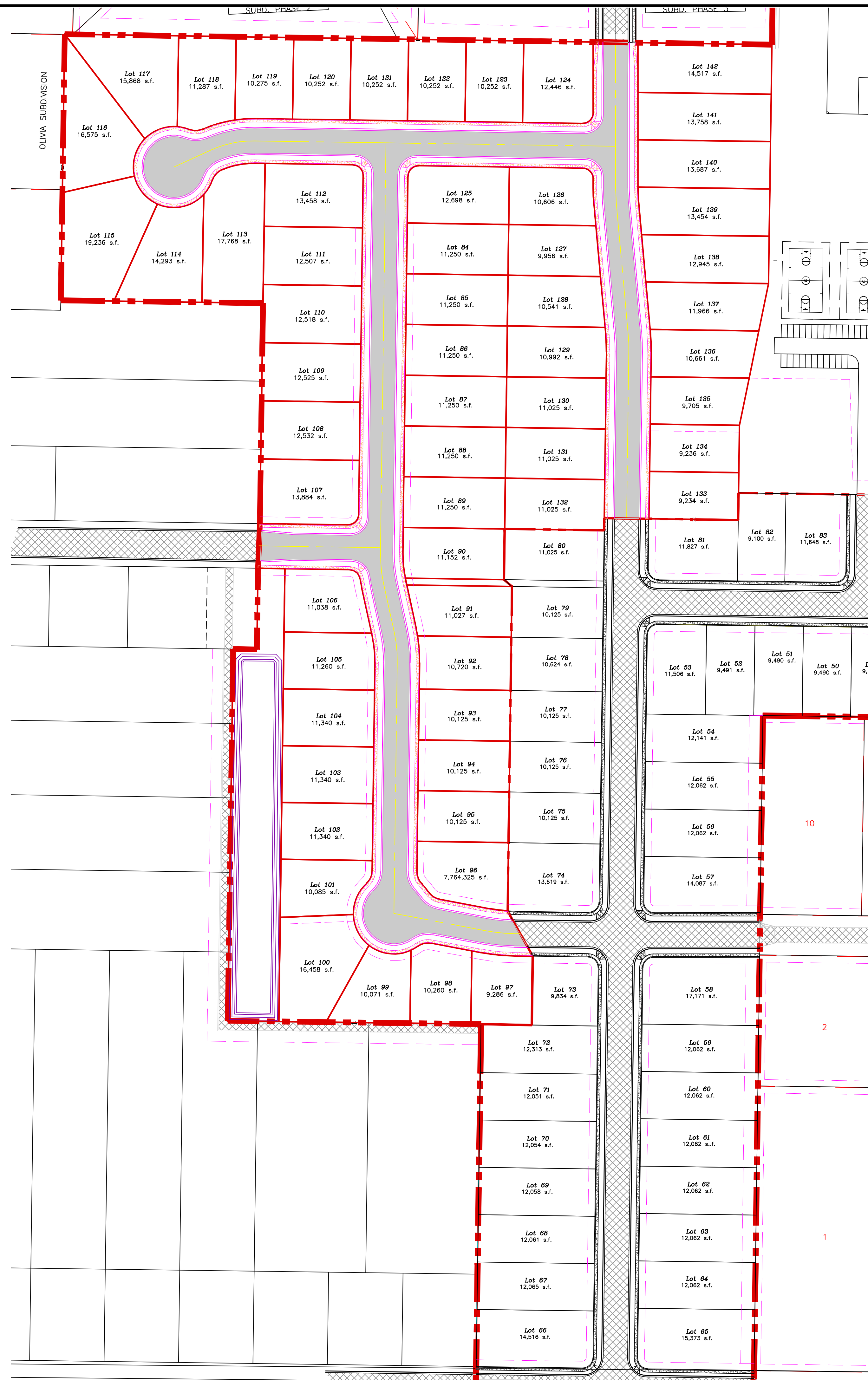
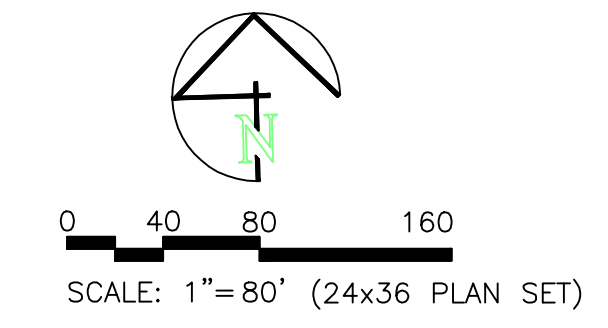
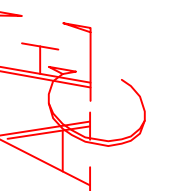


TAYLOR LANDING
A CLUSTER SUBDIVISION
PHASE 4/5



SEAL

ALLIANCE CONSULTING
ENGINEERS



150 EAST 2000 NORTH SUITE P
CANYON, UT 84301
(435) 735-9171
allianceeng@alliance.com

CONFIDENTIALITY AND COPYRIGHT NOTICE
UNAUTHORIZED USE, DISCLOSURE, OR COPYING OF THIS
DRAWING IS PROHIBITED.
CONSTRUCTION DOCUMENTS THAT ARE DISTRIBUTED FOR
YOUR INFORMATION ONLY ARE NOT TO BE USED AND
BE DESTROYED WITHIN 30 DAYS AFTER THE BID OPENING
BY THE PLAN HOLDER
COPYRIGHT 2025

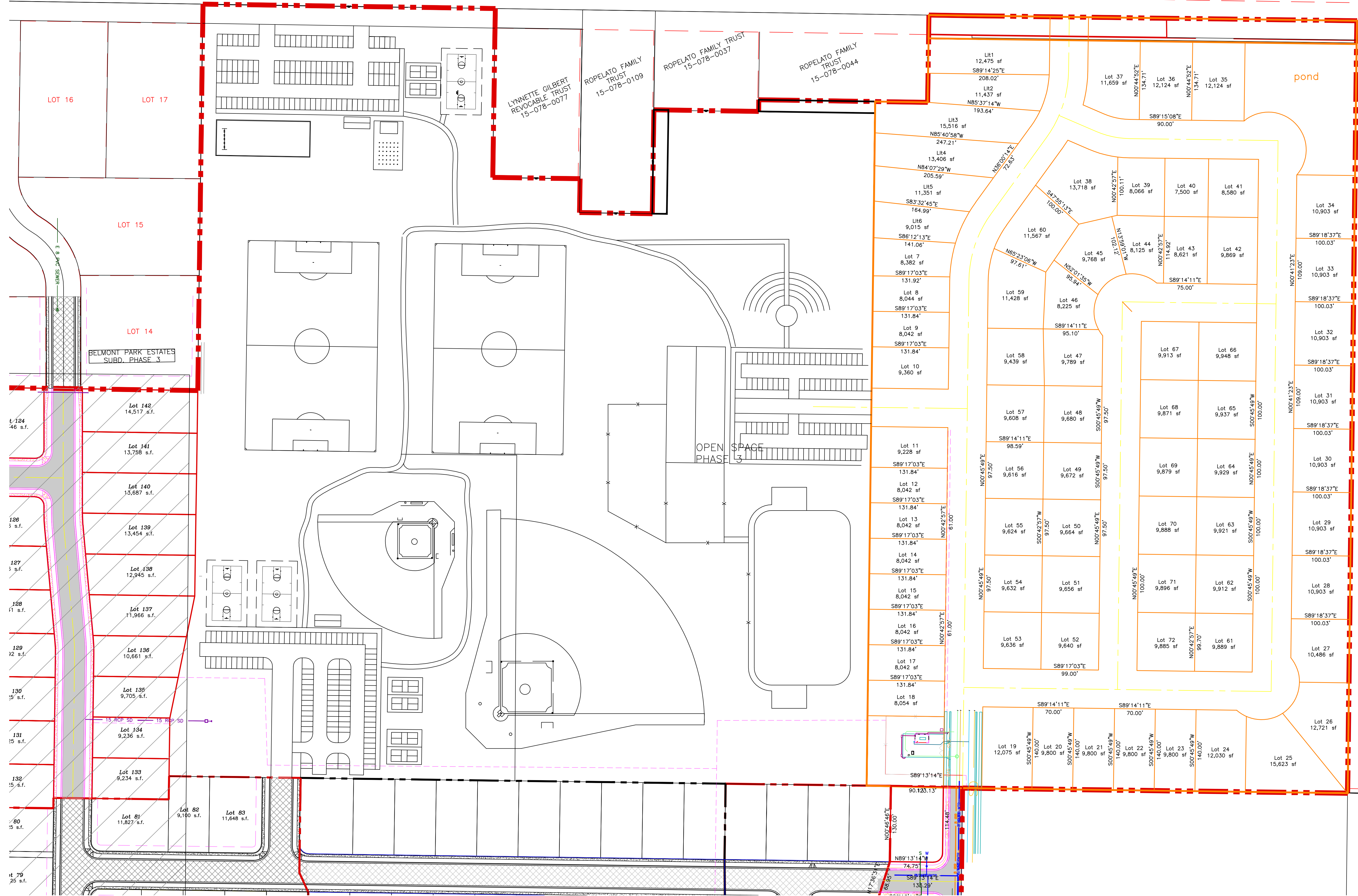
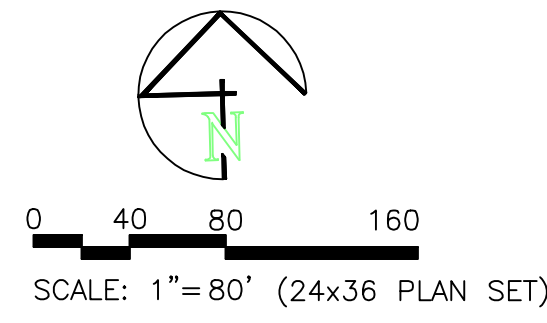
NO.	REVISIONS / SUBMISSIONS	DATE

REVIEWED: _____ DRAWN: _____ PROJECT NO.: _____
CADD FILE: _____

PROJECT TITLE
**TAYLOR LANDING
A CLUSTER SUBDIVISION**
DRAWING TITLE
PHASE 4/5

DATE - SEPT, 2023
DRAWING No. **11**

TAYLOR LANDING A CLUSTER SUBDIVISION MASTERPLAN



MLR street
8000 sf
min width 50 ft
Area: 24.74 acres /15000 =71.8 lots
3 lots per acre=74
total lots shown=72

SCALE

ALLIANCE CONSULTING
ENGINEERS
150 EAST 200 NORTH SUITE P
LOGAN, UTAH 84321
(435)755-5121
alliancelogan@yahoo.com

CONFIDENTIALITY AND COPYRIGHT NOTICE
UNAUTHORIZED USE, DISCLOSURE, OR COPYING OF THIS DRAWING IS PROHIBITED.
CONSTRUCTION DOCUMENTS THAT ARE DISTRIBUTED FOR BIDDING PURPOSES SHALL NOT BE RETURNED AND SHALL BE DESTROYED WITHIN 30 DAYS AFTER THE BIDDING BY THE PLAN HOLDER.
COPYRIGHT 2005

NO.	REVISIONS / SUBMISSIONS	DATE

PROJECT TITLE
**TAYLOR LANDING
A CLUSTER SUBDIVISION
MASTERPLAN**

DATE : SEPT, 2023
DRAWING NO. : 2