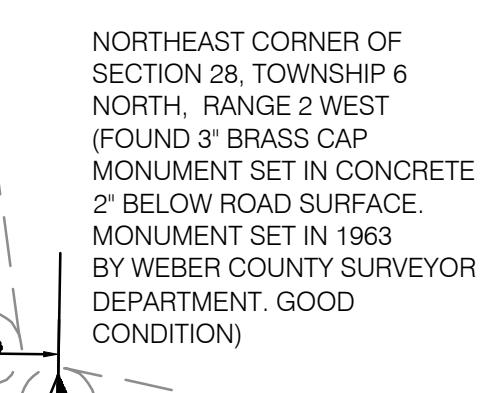
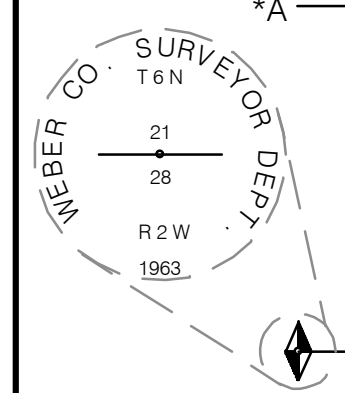
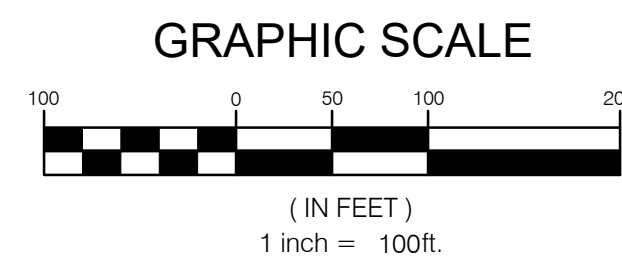


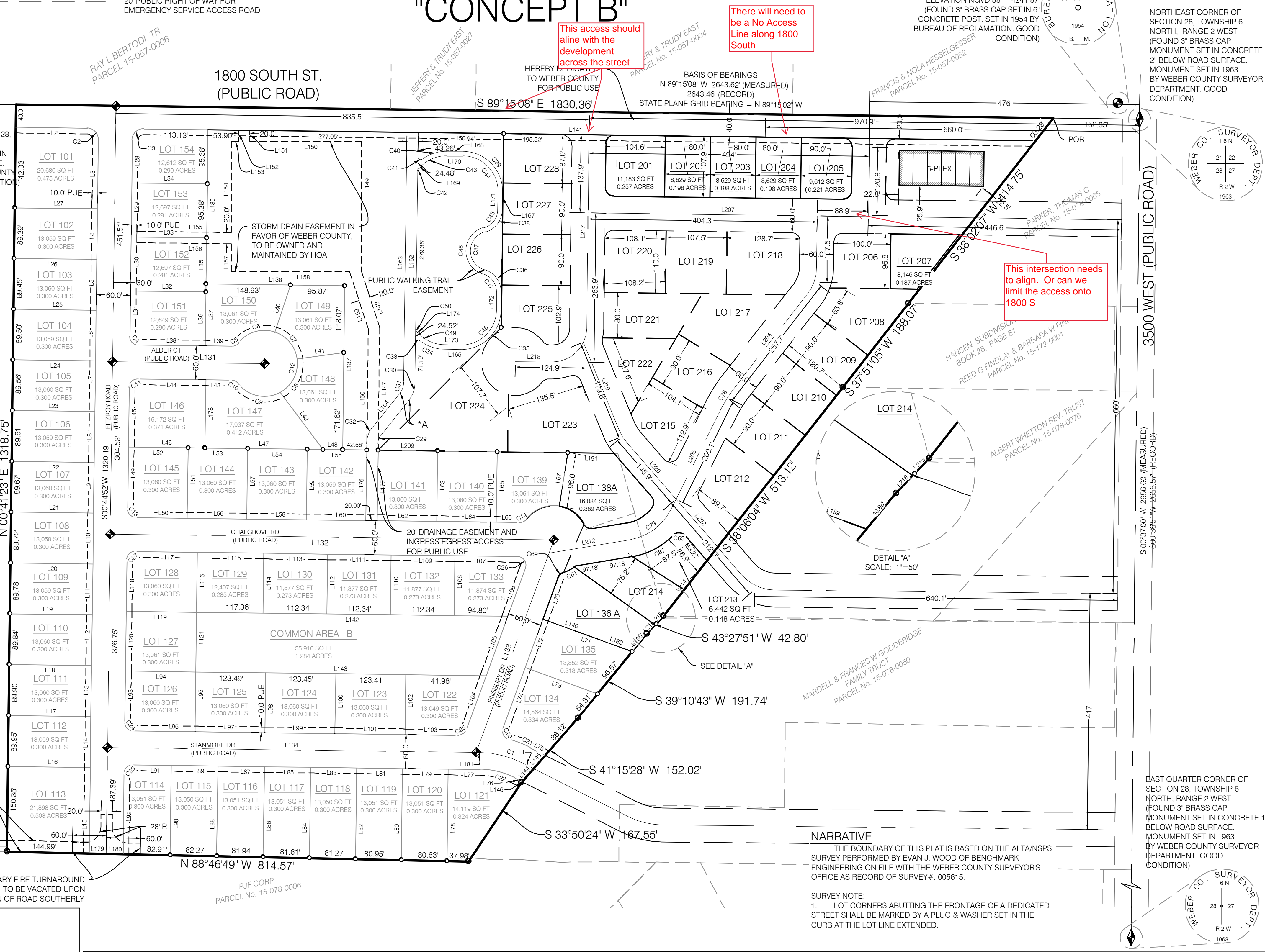
LEGEND

- WEBER COUNTY SECTION CORNER
LOT CORNER (SET 1/2 REBAR AND CAP)
BOUNDARY CORNER (SET 1/2 REBAR AND CAP)
P.U.E. PUBLIC UTILITY EASEMENT
STREET MON. (TO BE CONST.)
SECTION LINE
BOUNDARY LINE
LOT LINE
STREET CENTERLINE
EASEMENT LINE
RIGHT OF WAY LINE
20' PUBLIC RIGHT OF WAY FOR EMERGENCY SERVICE ACCESS ROAD

WINSTON PARK PHASE 2 & AMENDING LOTS 136, 137, & 138 WINSTON PARK
LOCATED IN THE NORTHEAST QUARTER OF SECTION 28, TOWNSHIP 6 NORTH NORTH, RANGE 2 WEST, SALT LAKE BASE AND MERIDIAN
WEBER COUNTY, UTAH
OCTOBER, 2023
"CONCEPT B"



NOTES:
1. FOR LOT ADDRESSES SEE PAGE 2
2. AGRICULTURE IS THE PREFERRED USE IN THE AGRICULTURAL ZONES. AGRICULTURAL OPERATIONS AS SPECIFIED IN THE LAND USE CODE FOR A PARTICULAR ZONE ARE PERMITTED AT ANYTIME INCLUDING THE OPERATION OF FARM MACHINERY AND NOT AGRICULTURAL USE SHALL BE SUBJECT TO RESTRICTIONS ON THE BASIS THAT IT INTERFERES WITH ACTIVITIES OF FUTURE RESIDENTS OF THIS SUBDIVISION. WCO 106-1-8 (C)(5)
3. THE LOWEST ALLOWABLE LIVABLE FINISH FLOOR ELEVATION WILL NEED TO BE APPROVED BY GEOTECHNICAL ENGINEER AND COUNTY ENGINEER DUE TO GROUND WATER TABLE.
4. SETBACKS FOR THIS SUBDIVISION MAY VARY FROM THE A-1 ZONE. FRONT/REAR: 20 FT, SIDE: 6 FT, STREET-FACING SIDE (CORNER LOT): 15 FT.



SURVEYOR'S CERTIFICATE
I, BRIAN A. LINAM DO HEREBY CERTIFY THAT I AM A LICENSED PROFESSIONAL LAND SURVEYOR, IN THE STATE OF UTAH IN ACCORDANCE WITH TITLE 58, CHAPTER 22, PROFESSIONAL ENGINEERS AND LAND SURVEYORS ACT, AND THAT I HOLD CERTIFICATE NO. 7240531: AND THAT I HAVE COMPLETED A SURVEY OF THE PROPERTY DESCRIBED ON THIS PLAT IN ACCORDANCE WITH SECTION 17-23-17 AND HAVE VERIFIED ALL MEASUREMENTS, AND HAVE PLACED MONUMENTS AS REPRESENTED ON THIS PLAT ON THIS PLAT, AND THAT THIS PLAT OF WINSTON PARK SUBDIVISION IN WEBER COUNTY, UTAH, HAS BEEN DRAWN CORRECTLY TO THE DESIGNATED SCALE AND IS A TRUE AND CORRECT REPRESENTATION OF THE HEREIN DESCRIBED LANDS INCLUDED IN SAID SUBDIVISION, BASED UPON DATA COMPILED FROM RECORDS IN THE WEBER COUNTY RECORDERS OFFICE AND FROM SAID SURVEY MADE BY ME ON THE GROUND. I FURTHER CERTIFY THAT THE REQUIREMENTS OF ALL APPLICABLE STATUTES AND ORDINANCES OF WEBER COUNTY CONCERNING ZONING REQUIREMENTS REGARDING LOT MEASUREMENTS HAVE BEEN COMPILED WITH.

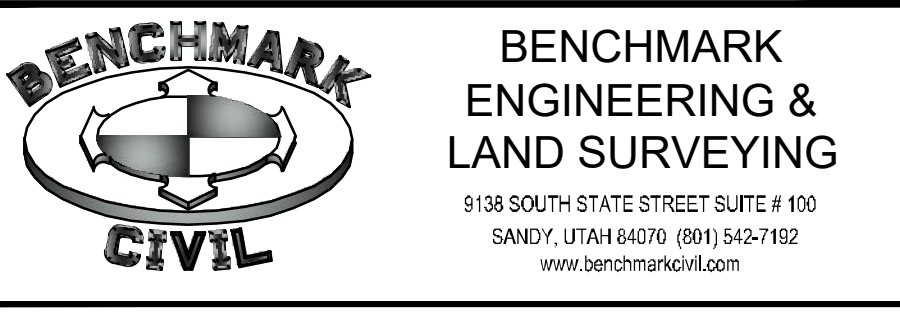
WINSTON PARK PHASE 2 & AMENDING LOTS 136, 137, & 138 WINSTON PARK
BOUNDARY DESCRIPTION
A TRACT OF LAND LOCATED IN THE NORTHEAST QUARTER OF SECTION 28, TOWNSHIP 6 NORTH, RANGE 2 WEST, SALT LAKE BASE AND MERIDIAN, SAID TRACT OF LAND MORE PARTICULARLY DESCRIBED AS FOLLOWS:
BEGINNING AT A POINT ON THE EXISTING FENCE LINE EXTENDED DEFINED AS THE WESTERLY BANK OF A SLOUGH, SAID POINT BEING NORTH 89°15'08" WEST ALONG THE QUARTER SECTION LINE 152.35 FEET AND SOUTH 38°02'07" WEST 50.28 FEET FROM THE NORTHEAST CORNER OF SECTION 28, TOWNSHIP 6 NORTH, RANGE 2 WEST, SALT LAKE BASE AND MERIDIAN AND RUNNING, THENCE SOUTH 38°02'07" WEST 364.48 FEET; THENCE SOUTH 37°51'05" WEST 188.07 FEET; THENCE SOUTH 38°06'04" WEST 513.12 FEET; THENCE SOUTH 43°27'51" WEST 42.80 FEET; THENCE SOUTH 39°10'43" WEST 40.86 FEET; THENCE NORTH 69°58'25" WEST 167.70 FEET; THENCE NORTH 20°01'35" EAST 77.72 FEET TO A POINT ON 15-FOOT RADIUS CURVE TO THE RIGHT; THENCE ALONG SAID CURVE A DISTANCE OF 13.91 FEET THRU A CENTRAL ANGLE OF 53°07'48" (CHORD BEARS N 46°35'29" E 13.42) TO A POINT ON A 60-FOOT RADIUS CURVE TO THE LEFT; THENCE ALONG SAID CURVE A DISTANCE OF 161.21 FEET THRU A CENTRAL ANGLE OF 163°56'31" (CHORD BEARS N 03°48'52" W 116.91); THENCE NORTH 09°12'52" EAST 96.05 FEET; THENCE NORTH 89°15'08" WEST 397.47 FEET; THENCE NORTH 00°44'52" EAST 289.69 FEET; THENCE NORTH 89°15'08" WEST 244.80 FEET; THENCE NORTH 00°44'52" EAST 272.01 FEET; THENCE SOUTH 89°15'08" EAST 1460.45 FEET TO BEGINNING.

OWNERS DEDICATION
WE THE UNDERSIGNED OWNERS OF THE HEREIN DESCRIBED TRACT OF LAND, DO HEREBY SET APART AND SUBDIVIDE THE SAME INTO LOTS AND STREETS AS SHOWN ON THE PLAT AND NAME SAID TRACT, WINSTON PARK SUBDIVISION, AND DO HEREBY DEDICATE, FOR PERPETUAL USE OF THE PUBLIC ALL PARCELS OF LAND, TRAILS AND ROADS INTENDED FOR PUBLIC USE, AND ALSO TO GRANT AND DEDICATE A PERPETUAL RIGHT AND EASEMENT OVER, UPON AND UNDER THE LANDS DESIGNATED HEREON AS PUBLIC UTILITY EASEMENTS, STORM WATER DETENTION PONDS, SEWER EASEMENTS, AND DRAINAGE EASEMENTS, THE SAME TO BE USED FOR THE INSTALLATION, MAINTENANCE, AND OPERATION OF PUBLIC UTILITY SERVICE LINE, AND STORM DRAINAGE FACILITIES, WITH NO BUILDINGS OR STRUCTURES BEING ERRECTED WITHIN SUCH EASEMENTS.
AND DO ALSO GRANT AND CONVEY TO THE SUBDIVISION LOT OWNERS ASSOCIATION, ALL THOSE PARTS OR PORTIONS OF SAID TRACT OF LAND DESIGNATED AS COMMON AREAS TO BE USED FOR RECREATIONAL AND PURPOSES FOR THE BENEFIT OF EACH LOT OWNERS ASSOCIATION MEMBER IN COMMON WITH ALL OTHERS IN THE SUBDIVISION AND GRANT AND DEDICATE TO THE COUNTY A PERPETUAL RIGHT AND EASEMENT ON AND OVER THE COMMON AREAS TO GUARANTEE TO WEBER COUNTY THAT THE COMMON AREAS REMAIN OPEN AND UNDEVELOPED EXCEPT FOR APPROVED RECREATIONAL, PARKING AND OPEN SPACE PURPOSES.

ACKNOWLEDGMENT
WADE RUMSEY
State of } S.S.
County of }
ON THE DAY OF , 2020, PERSONALLY APPEARED BEFORE ME, THE UNDERSIGNED NOTARY PUBLIC, WADE RUMSEY, OF THE ABOVE OWNERS DEDICATION AND CERTIFICATION, WHO BEING BY ME DULY SWORN, DID ACKNOWLEDGE TO ME THAT HE SIGNED IT FREELY, VOLUNTARILY, AND FOR THE PURPOSES THEREIN MENTIONED.

WINSTON PARK PHASE 2 & AMENDING LOTS 136, 137, & 138 WINSTON PARK
LOCATED IN THE NORTHEAST QUARTER OF SECTION 28, TOWNSHIP 6 NORTH NORTH, RANGE 2 WEST, SALT LAKE BASE AND MERIDIAN
WEBER COUNTY, UTAH
OCTOBER, 2023
PAGE 1 OF 2

OWNER / DEVELOPER:
NAME: OGDEN 3, LLC
TELEPHONE: (801) 209-6759
IGORMAKSYMIV@AOL.COM



TAYLOR WEST WEBER WATER IMPROVEMENT DISTRICT
THIS IS TO CERTIFY THAT THIS SUBDIVISION PLAT AND WATER DESIGN IS APPROVED BY TAYLOR WEST WEBER WATER IMPROVEMENT DISTRICT ON THE DAY OF , 2022.

WEBER COUNTY SURVEYOR
I HEREBY CERTIFY THAT THE WEBER COUNTY SURVEYOR'S OFFICE HAS REVIEWED THIS PLAT AND ALL CONDITIONS FOR APPROVAL BY THIS OFFICE HAVE BEEN SATISFIED. THE APPROVAL OF THIS PLAT BY THE WEBER COUNTY SURVEYOR DOES NOT RELIEVE THE LICENSED LAND SURVEYOR WHO EXECUTED THIS PLAT FROM THE RESPONSIBILITIES AND/OR LIABILITIES ASSOCIATED THEREWITH.
SIGNED THIS DAY OF , 2022.

WEBER COUNTY PLANNING COMMISSION ACCEPTANCE
THIS IS TO CERTIFY THAT THIS SUBDIVISION PLAT WAS DULY APPROVED BY THE WEBER COUNTY, PLANNING COMMISSION ON THE DAY OF , 2022.

WEBER COUNTY ENGINEER
I HEREBY CERTIFY THAT THE REQUIRED PUBLIC IMPROVEMENT STANDARDS AND DRAWINGS FOR THIS SUBDIVISION CONFORM WITH THE COUNTY STANDARDS AND THE AMOUNT OF THE FINANCIAL GUARANTEE IS SUFFICIENT FOR THE INSTALLATION OF THESE IMPROVEMENTS.
SIGNED THIS DAY OF , 2022.

WEBER COUNTY COMMISSION ACCEPTANCE
THIS IS TO CERTIFY THAT THIS SUBDIVISION PLAT, THE DEDICATION OF STREETS AND OTHER PUBLIC WORKS AND FINANCIAL GUARANTEE OF PUBLIC IMPROVEMENTS ASSOCIATED WITH THIS SUBDIVISION, THEREON ARE HEREBY APPROVED AND ACCEPTED BY THE COMMISSIONERS OF WEBER COUNTY, UTAH THIS DAY OF , 2022.

WEBER COUNTY ATTORNEY
I HAVE EXAMINED THE FINANCIAL GUARANTEE AND OTHER DOCUMENTS ASSOCIATED WITH THIS SUBDIVISION PLAT AND IN MY OPINION THEY CONFORM WITH THE COUNTY ORDINANCE APPLICABLE THERETO AND NOW IN FORCE AND AFFECT.
SIGNED THIS DAY OF , 2022.

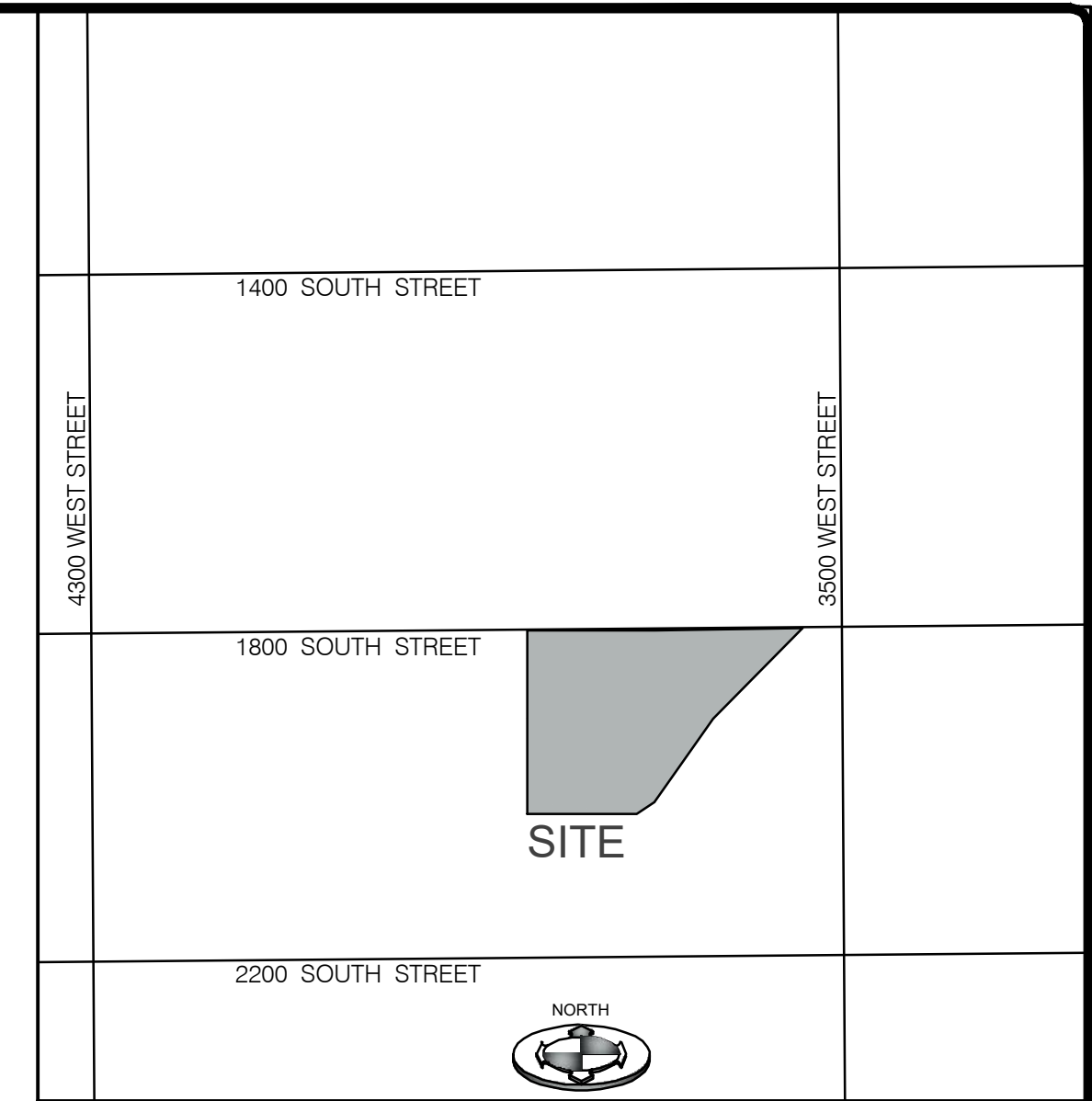
WEBER COUNTY RECORDER
ENTRY NO.
FEE PAID
FILED FOR RECORD AND RECORDED AT BOOK OF OFFICIAL RECORDS, PAGE RECORDED FOR:
WEBER COUNTY RECORDER
DEPUTY



# WINSTON PARK PHASE 2

LOCATED IN THE NORTHEAST QUARTER OF SECTION 28,  
TOWNSHIP 6 NORTH NORTH, RANGE 2 WEST,  
SALT LAKE BASE AND MERIDIAN  
WEBER COUNTY, UTAH  
2021

## "CONCEPT"



VICINITY MAP  
SCALE: N.T.S.

CURVE TABLE					
CURVE #	LENGTH	RADIUS	DELTA	CHORD BEARING	CHORD DISTANCE
C1	77.39'	170.00'	26°04'54"	N 76°11'45" W	76.72'
C2	31.42'	20.00'	90°00'00"	N 44°15'08" W	28.28'
C3	31.42'	20.00'	90°00'00"	S 45°44'52" W	28.28'
C4	23.56'	15.00'	90°00'00"	S 44°15'08" E	21.21'
C5	13.60'	15.00'	51°56'37"	N 64°46'33" E	13.14'
C6	70.24'	58.00'	69°23'17"	S 73°29'54" W	66.03'
C7	64.62'	58.00'	63°50'01"	N 39°53'27" W	61.33'
C8	69.97'	58.00'	69°07'21"	N 26°35'14" E	65.81'
C9	82.55'	58.00'	81°32'34"	S 78°04'49" E	75.75'
C10	13.60'	15.00'	51°56'37"	N 63°16'50" W	13.14'
C11	23.56'	15.00'	90°00'00"	S 45°44'52" W	21.21'
C12	287.38'	58.00'	283°53'13"	N 00°44'52" E	71.51'
C13	23.56'	15.00'	90°00'00"	S 44°15'08" E	21.21'
C14	13.91'	15.00'	53°07'48"	N 64°10'57" E	13.42'
C20	24.81'	15.00'	94°46'35"	S 27°21'43" E	22.08'
C21	40.47'	200.00'	11°35'42"	N 68°57'09" W	40.41'
C22	63.73'	140.00'	26°04'54"	N 76°11'45" W	63.18'
C23	23.57'	15.00'	90°00'57"	S 45°45'20" W	21.22'
C24	23.56'	15.00'	89°59'03"	S 44°14'40" E	21.21'
C25	18.52'	15.00'	70°44'14"	N 55°23'42" E	17.37'
C26	28.61'	15.00'	109°16'43"	N 34°36'47" W	24.47'
C27	23.56'	15.00'	90°00'00"	S 45°44'52" W	21.21'
C29	18.43'	28.00'	37°42'19"	S 19°36'01" W	18.10'
C30	31.59'	48.00'	37°42'19"	N 19°36'01" E	31.02'
C31	18.43'	28.00'	37°42'19"	N 19°36'01" E	18.10'
C32	31.59'	48.00'	37°42'19"	S 19°36'01" W	31.02'
C33	11.11'	5.00'	127°17'04"	S 64°23'23" W	8.96'
C34	45.55'	70.00'	37°17'02"	S 70°36'37" E	44.75'
C35	109.96'	70.00'	90°00'00"	N 45°44'52" E	98.99'
C36	52.00'	40.00'	74°28'45"	N 36°29'31" W	48.41'
C37	90.32'	34.74'	148°57'29"	S 00°44'52" W	66.95'
C38	52.00'	40.00'	74°28'45"	N 37°59'14" E	48.41'
C39	109.96'	70.00'	90°00'00"	N 44°15'08" W	98.99'
C40	45.48'	70.00'	37°13'40"	S 72°08'02" W	44.69'
C41	11.10'	5.00'	127°13'40"	S 62°51'58" E	8.96'
C42	3.93'	5.00'	45°00'03"	S 23°14'50" W	3.83'
C43	48.69'	62.00'	45°00'00"	S 68°14'52" W	47.45'
C44	97.39'	62.00'	90°00'00"	N 44°15'08" W	87.68'
C45	41.60'	32.00'	74°28'45"	N 37°59'14" E	38.73'
C46	111.12'	42.74'	148°57'29"	S 00°44'52" W	82.37'
C47	41.60'	32.00'	74°28'45"	N 36°29'31" W	38.73'
C48	97.39'	62.00'	90°00'00"	N 45°44'52" E	87.68'
C49	48.82'	62.00'	45°06'54"	S 66°41'41" E	47.57'
C50	3.92'	5.00'	44°53'06"	S 21°41'41" E	3.82'
C61	21.09'	60.00'	20°08'16"	S 63°05'15" W	20.98'
C64	82.18'	130.00'	36°13'12"	S 62°31'09" W	80.82'
C65	24.78'	15.00'	94°40'10"	N 88°15'22" W	22.06'
C69	13.91'	15.00'	53°07'48"	S 46°35'29" W	13.42'
C78	39.40'	200.00'	11°17'13"	N 32°12'28" E	39.34'
C79	94.36'	100.00'	54°03'53"	N 53°35'48" E	90.90'

PARCEL LINE TABLE		
LINE #	BEARING	DISTANCE
L1	S 63°09'18" E	22.14'
L2	S 89°15'08" E	126.28'
L3	S 00°44'52" W	122.02'
L4	S 00°44'52" W	89.39'
L5	S 00°44'52" W	89.45'
L6	S 00°44'52" W	89.50'
L7	S 00°44'52" W	89.56'
L8	S 00°44'52" W	89.61'
L9	S 00°44'52" W	89.67'
L10	S 00°44'52" W	89.72'
L11	S 00°44'52" W	89.78'
L12	S 00°44'52" W	89.84'
L13	S 00°44'52" W	89.90'
L14	S 00°44'52" W	89.95'
L15	S 00°44'52" W	151.55'
L16	N 89°15'08" W	145.14'
L17	S 89°15'08" E	145.23'
L18	N 89°15'08" W	145.32'
L19	S 89°15'08" E	145.41'
L20	N 89°15'08" W	145.50'
L21	S 89°15'08" E	145.60'
L22	N 89°15'08" W	145.69'
L23	S 89°15'08" E	145.78'
L24	N 89°15'08" W	145.87'
L25	S 89°15'08" E	145.96'
L26	N 89°15'08" W	146.05'
L27	S 89°15'08" E	146.14'
L28	S 00°44'52" W	75.38'
L29	S 00°44'52" W	95.38'
L30	S 00°44'52" W	95.38'
L31	S 00°44'52" W	80.38'
L32	S 89°15'08" E	133.13'
L33	S 89°15'08" E	133.13'
L34	S 89°15'08" E	133.13'
L35	S 00°44'52" W	95.38'
L36	S 00°44'52" W	95.38'
L37	S 00°44'52" W	109.50'
L38	S 89°15'08" E	118.13'
L39	S 89°15'08" E	47.61'
L40	N 16°11'32" E	88.23'
L41	N 82°01'33" E	83.34'
L42	S 36°41'11" E	125.62'
L43	S 89°15'08" E	45.77'
L44	S 89°15'08" E	119.97'
L45	S 00°44'52" W	105.18'
L46	S 89°15'08" E	134.97'
L47	S 89°15'08" E	208.26'
L48	S 89°15'08" E	34.70'
L49	S 00°44'52" W	109.35'
L50	N 89°15'08" W	90.42'
L51	S 00°44'52" W	124.35'
L52	S 89°15'08" E	105.42'
L53	S 89°15'08" E	105.03'
L54	N 89°15'08" W	105.02'
L55	N 89°15'08" W	105.02'
L56	N 89°15'08" W	105.03'
L57	S 00°44'52" W	124.35'
L58	N 89°15'08" W	105.02'
L59	S 00°44'52" W	124.35'
L60	N 89°15'08" W	105.02'

PARCEL LINE TABLE		
LINE #	BEARING	DISTANCE
L62	N 89°15'08" W	105.03'
L63	S 00°44'52" W	124.35'
L64	N 89°15'08" W	105.02'
L65	S 00°44'52" W	124.35'
L66	N 89°15'08" W	41.88'
L67	N 09°12'52" E	96.05'
L70	N 20°01'35" E	77.72'
L71	N 69°58'25" W	167.70'
L72	N 20°01'35" E	91.22'
L73	N 69°58'25" W	136.01'
L74	N 20°01'35" E	114.23'
L75	S 63°09'18" E	29.85'
L76	S 63°09'18" E	14.43'
L77	S 89°14'12" E	56.18'
L78	S 00°45'48" W	162.18'
L79	S 89°14'12" E	80.63'
L80	N 00°45'48" E	161.54'
L81	S 89°14'12" E	80.95'
L82	S 00°45'48" W	160.90'
L83	S 89°14'12" E	81.27'
L84	N 00°45'48" E	160.25'
L85	S 89°14'12" E	81.61'
L86	S 00°45'48" W	159.60'
L87	S 89°14'12" E	81.94'
L88	N 00°45'48" E	158.95'
L89	S 89°14'12" E	82.27'
L90	S 00°45'48" W	158.29'
L91	S 89°14'12" E	67.95'
L92	S 00°44'52" W	142.63'
L93	S 00°44'52" W	90.71'
L94	N 89°15'08" W	123.99'
L95	S 00°44'52" W	105.74'
L96	S 89°14'12" E	109.00'
L97	S 89°14'12" E	123.49'
L98	S 00°44'52" W	105.77'
L99	S 89°14'12" E	123.45'
L100	S 00°44'52" W	105.81'
L101	S 89°14'12" E	123.41'
L102	S 00°44'52" W	105.84'
L103	S 89°14'12" E	94.30'
L104	N 20°01'35" E	101.51'
L105	N 20°01'35" E	111.60'
L106	N 20°01'35" E	90.86'
L107	N 89°15'08" W	110.64'
L108	S 00°44'52" W	105.72'
L109	N 89°15'08" W	112.34'
L110	S 00°44'52" W	105.72'
L111	N 89°15'08" W	112.34'
L112	S 00°44'52" W	105.72'
L113	N 89°15'08" W	112.34'
L114	S 00°44'52" W	105.72'
L115	N 89°15'08" W	117.36'
L116	S 00°44'52" W	105.60'
L117	N 89°15'08" W	108.99'
L118	S 00°44'52" W	90.72'
L119	N 89°15'08" W	123.99'
L120	S 00°44'52" W	105.34'
L121	S 00°44'52" W	105.34'
L131	S 89°15'08" E	268.22'
L132	N 89°15'08" W	782.43'

PARCEL LINE TABLE		
LINE #	BEARING	DISTANCE
L133	N 20°01'35" E	399.33'
L134	S 89°14'12" E	650.58'
L137	S 00°44'52" W	279.01'
L138	S 89°15'08" E	244.80'
L139	S 00°44'52" W	279.01'
L140	S 69°58'25" E	167.70'
L141	S 89°15'08" E	195.52'
L142	N 89°15'08" W	549.18'
L143	S 89°15'08" E	512.29'
L144	N 41°15'28" E	30.97'
L145	N 41°15'28" E	30.97'
L146	N 41°15'28" E	1.95'
L147	S 00°44'17" W	216.62'
L148	N 17°55'14" W	103.47'
L149	S 00°00'00" E	230.00'
L150	N 90°00'00" E	197.07'
L151	S 00°00'00" E	19.64'
L152	S 00°00'00" E	19.90'
L153	N 90°00'00" W	12.93'
L154	S 00°00'00" E	160.70'
L155	N 89°15'08" W	166.45'
L156	N 89°15'08" W	166.71'
L157	N 00°00'00" E	49.30'
L158	N 90°00'00" W	208.98'
L159	N 17°55'14" W	106.65'
L160	S 00°44'17" W	213.33'
L162	S 00°44'52" W	442.81'
L163	N 00°44'52" E	442.81'
L164	N 38°27'11" E	78.01'
L165	N 89°15'08" W	29.47'
L167	S 00°44'52" W	32.47'
L168	S 89°15'08" E	29.53'
L169	S 45°44'52" W	7.17'
L170	N 89°15'08" W	29.53'
L171	N 00°44'52" E	32.47'
L172	N 00°44'52" E	32.47'
L173	S 89°15'08" E	29.47'
L174	S 44°08'14" E	7.15'
L176	N 00°44'52" E	124.35'
L177	S 00°44'52" W	124.35'
L178	S 00°44'52" W	120.18'
L179	S 88°46'49" E	30.00'
L180	S 88°46'49" E	30.00'
L181	S 89°14'12" E	7.22'
L189	S 69°58'25" E	167.70'
L191	N 89°15'08" W	81.07'
L204	N 37°51'05" E	211.09'
L205	N 80°37'45" E	144.03'
L206	N 26°33'52" E	200.42'
L207	S 89°15'08" E	493.20'
L209	S 89°15'08" E	105.03'
L212	N 80°37'45" E	144.03'
L214	N 38°06'04" E	65.01'
L215	N 43°27'51" E	21.40'
L216	N 43°27'51" E	21.40'
L217	N 00°44'52" E	341.79'
L218	S 89°15'08" E	64.94'
L219	S 22°10'07" E	166.60'
L220	S 40°55'17" E	132.69'
L222	S 40°55'17" E	112.22'

LOT	ADDRESS
101	3789 W. / 1811 S.
102	1825 S.
103	1841 S.
104	1855 S.
105	1871 S.
106	1885 S.
107	1901 S.
108	1915 S.
109	1931 S.
110	1947 S.
111	1961 S.
112	1977 S.
113	1991 S.
114	1988 S. / 3761 W.
115	3749 W.
116	3737 W.
117	3725 W.
118	3711 W.
119	3701 W.
120	3687 W.
121	3673 W.
122	1957 S. / 3685 W.
123	3702 W.
124	3722 W.
125	3738 W.
126	3758 W. / 1958 S.
127	1942 S.
128	1927 S. / 3759 W.
129	3741 W.
130	3723 W.
131	3705 W.
132	3689 W.
133	3671 W.
134	3662 W. / 1958 S.
135	1942 S.
136	1928 S.