

POWDER POINT AT POWDER MOUNTAIN AMENDMENT I

LOCATED IN THE NORTHEAST QUARTER OF SECTION 8, AND NORTHWEST QUARTER OF SECTION 9
TOWNSHIP 7 NORTH, RANGE 2 EAST,
SALT LAKE BASE AND MERIDIAN,
WEBER COUNTY, UTAH
NOVEMBER 2023

FINAL OVERLOOK POINT SUBDIVISION SHEET

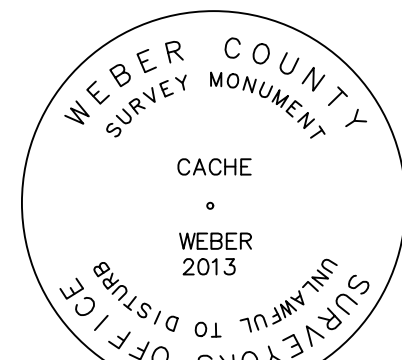
NORTHEAST CORNER SECTION 1,
TOWNSHIP 7 NORTH, RANGE 1 EAST
SALT LAKE BASE AND MERIDIAN
FOUND GLO 1944, 4" BRASS CAP,
GOOD CONDITION
6" ABOVE GROUND
DETAIL "B"

BASIS OF BEARINGS
N 89°55'51" W 1381.07'
(N 89°56'05" W 1380.98' RECORD)

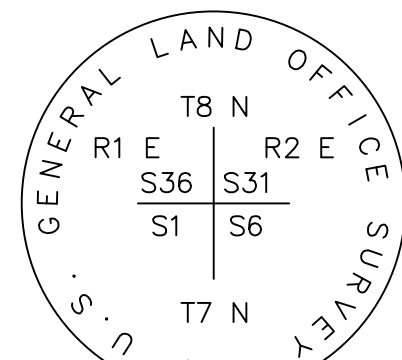
S 53°43'38" E
9312.68' (TIE)

FOUND WEBER COUNTY LINE
MONUMENT PER WEBER COUNTY
SURVEYOR, 4" BRASS CAP 2013,
GOOD CONDITION
FLUSH IN CONCRETE
DETAIL "A"

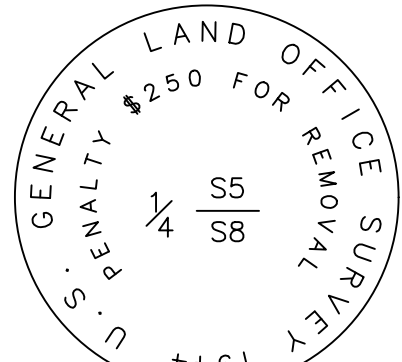
NORTH QUARTER CORNER SECTION
8, TOWNSHIP 7 NORTH, RANGE 2 EAST
SALT LAKE BASE AND MERIDIAN,
FOUND 1944 GLO 4" BRASS CAP,
GOOD CONDITION
6" ABOVE GROUND
DETAIL "C"



DETAIL "A"



DETAIL "B"



DETAIL "C"

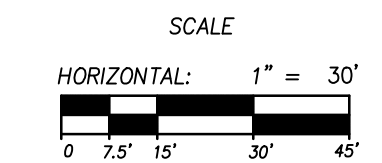
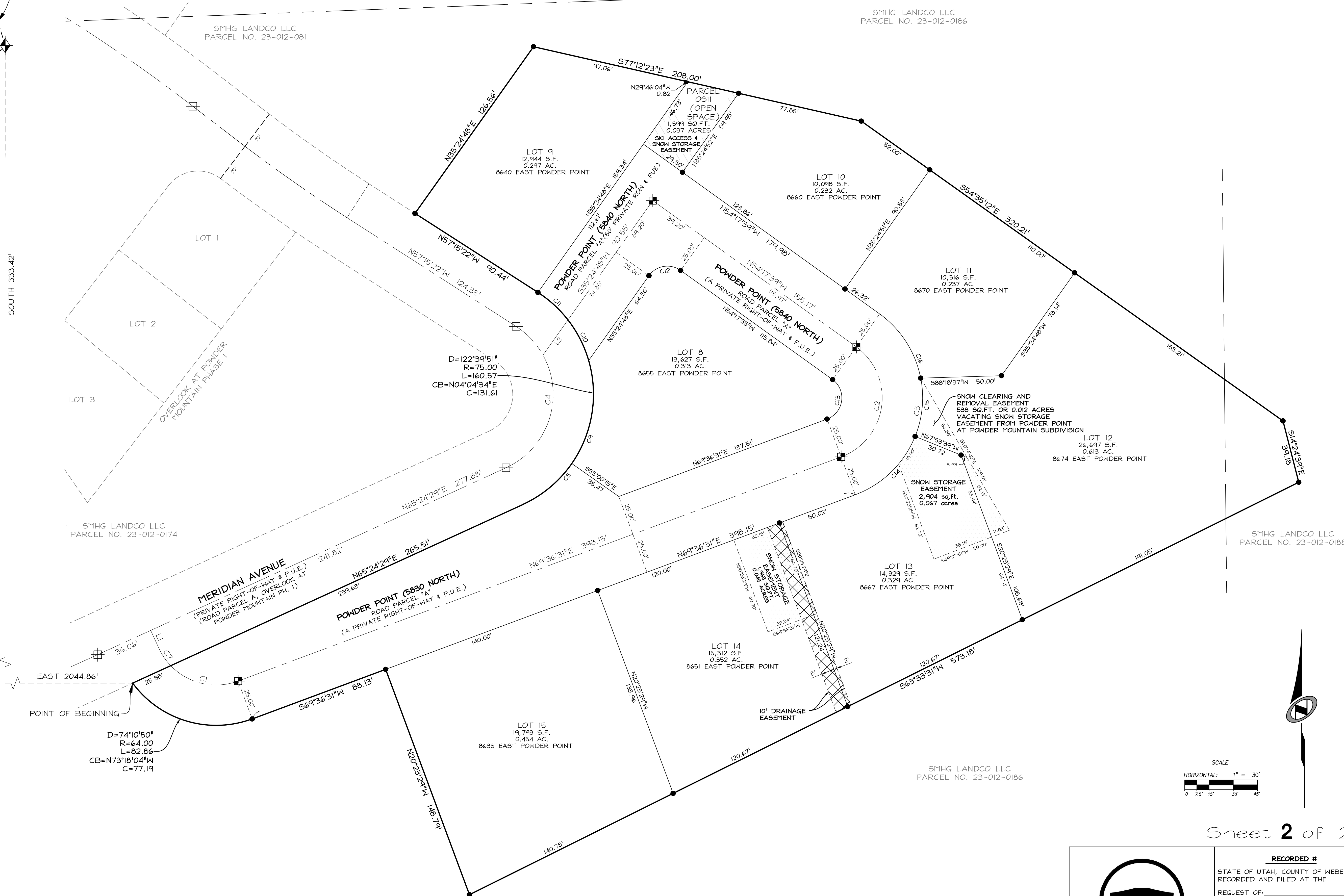
LEGEND

- BOUNDARY LINE
- SECTION LINE
- ADJOINER DEED LINES
- RIGHT-OF-WAY LINE
- ROAD CENTERLINE
- SECTION CORNER AS NOTED
- SET CL MONUMENT
- FOUND CL MONUMENT
- SET NO. 5 X 24" LONG REBAR WITH PLASTIC CAP STAMPED "TALISMAN"
- PUBLIC UTILITY & DRAINAGE EASEMENT
- SNOW STORAGE/REMOVAL EASEMENT
- SKI ACCESS EASEMENT

CURVE TABLE					
CURVE	RADIUS	LENGTH	DELTA	BEARING	CHORD
C1	39.00	45.27	66°30'00"	S77°08'28"E	42.77
C2	39.00	84.03	123°26'24"	N07°53'16"E	68.69
C3	64.00	138.40	123°54'10"	N07°39'26"E	112.97
C4	50.00	107.04	122°39'51"	N04°04'34"E	87.74
C5	50.00	82.48	94°31'06"	S18°08'56"W	73.44
C6	50.00	24.56	28°08'45"	S43°10'59"E	24.32
C7	39.00	13.14	19°17'58"	N34°14'29"W	13.07
C8	75.00	40.01	30°33'57"	S50°07'31"W	39.54
C9	75.00	66.90	51°06'22"	S09°17'21"W	64.70
C10	75.00	28.35	21°39'32"	N27°05'35"W	28.18
C11	75.00	25.31	19°20'01"	N47°35'22"W	25.19
C12	14.00	22.06	90°17'37"	S80°33'36"W	19.85
C13	14.00	30.09	123°07'52"	N08°02'28"E	24.62
C14	64.00	53.27	47°41'31"	N45°45'46"E	51.75
C15	64.00	36.77	32°55'06"	N05°27'27"E	36.27
C16	64.00	48.36	43°17'33"	N32°38'52"W	47.22

LINE TABLE		
LINE	LENGTH	BEARING
L1	12.11	N24°35'31"W
L2	26.71	S35°24'48"W

OVERLOOK POINT LLC
3923 N. WOLF CREEK DR.
EDEN, UT, 84310



RECORDED #
STATE OF UTAH, COUNTY OF WEBER,
RECORDED AND FILED AT THE
REQUEST OF:
ENTRY NO: _____
DATE: _____ TIME: _____
BOOK: _____ PAGE: _____
FEE \$ _____
WEBER COUNTY RECORDER

1588 SOUTH MAIN STREET
SUITE 200
SALT LAKE CITY, UT 84115
801.743.1300