

NORTH QUARTER CORNER OF SECTION 21, TOWNSHIP 6 NORTH AND MERIDIAN, U.S. SURVEY (FOUND AND GOOD CONDITION) SEE MONUMENT DETAIL 1

CORNER OF SECTION 21, TOWNSHIP 6 NORTH, RANGE 2 WEST, SALT LAKE BASE AND MERIDIAN, U.S. SURVEY (FOUND AND GOOD CONDITION) SEE MONUMENT DETAIL 1

EAST QUARTER CORNER OF SECTION 21, TOWNSHIP 6 NORTH, RANGE 2 WEST, SALT LAKE BASE AND MERIDIAN, U.S. SURVEY (FOUND AND GOOD CONDITION) SEE MONUMENT DETAIL 2

EAST QUARTER CORNER OF SECTION 21, TOWNSHIP 6 NORTH, RANGE 2 WEST, SALT LAKE BASE AND MERIDIAN, U.S. SURVEY (FOUND AND GOOD CONDITION) SEE MONUMENT DETAIL 3

EAST QUARTER CORNER OF SECTION 21, TOWNSHIP 6 NORTH, RANGE 2 WEST, SALT LAKE BASE AND MERIDIAN, U.S. SURVEY (FOUND AND GOOD CONDITION) SEE MONUMENT DETAIL 4

EAST QUARTER CORNER OF SECTION 21, TOWNSHIP 6 NORTH, RANGE 2 WEST, SALT LAKE BASE AND MERIDIAN, U.S. SURVEY (FOUND AND GOOD CONDITION) SEE MONUMENT DETAIL 5

EAST QUARTER CORNER OF SECTION 21, TOWNSHIP 6 NORTH, RANGE 2 WEST, SALT LAKE BASE AND MERIDIAN, U.S. SURVEY (FOUND AND GOOD CONDITION) SEE MONUMENT DETAIL 6

EAST QUARTER CORNER OF SECTION 21, TOWNSHIP 6 NORTH, RANGE 2 WEST, SALT LAKE BASE AND MERIDIAN, U.S. SURVEY (FOUND AND GOOD CONDITION) SEE MONUMENT DETAIL 7

EAST QUARTER CORNER OF SECTION 21, TOWNSHIP 6 NORTH, RANGE 2 WEST, SALT LAKE BASE AND MERIDIAN, U.S. SURVEY (FOUND AND GOOD CONDITION) SEE MONUMENT DETAIL 8

STAGECOACH ESTATES SUBDIVISION PHASE 1

PART OF THE SOUTHWEST QUARTER OF SECTION 21, TOWNSHIP 6 NORTH, RANGE 2 WEST, SALT LAKE BASE AND MERIDIAN, U.S. SURVEY
WEBER COUNTY, UTAH
OCTOBER, 2023

- MONUMENT DETAIL 1 (NOT TO SCALE)
- MONUMENT DETAIL 2 (NOT TO SCALE)
- MONUMENT DETAIL 3 (NOT TO SCALE)
- MONUMENT DETAIL 4 (NOT TO SCALE)
- MONUMENT DETAIL 5 (NOT TO SCALE)
- MONUMENT DETAIL 6 (NOT TO SCALE)
- MONUMENT DETAIL 7 (NOT TO SCALE)
- MONUMENT DETAIL 8 (NOT TO SCALE)

The existing location, widths, and other dimensions of all existing or platted streets or railroad lines within and immediately adjacent (within 30') to the tract of land to be subdivided, WCO 106-1-5(a)(6)
None

The existing location, widths, and other dimensions of all existing or platted streets or railroad lines within and immediately adjacent (within 30') to the tract of land to be subdivided, WCO 106-1-5(a)(6)
Fences added

The existing location, widths, and other dimensions of all existing or platted lots, drains, culverts, watercourses, ditches, or other structures within and immediately adjacent (within 30') to the tract of land to be subdivided, WCO 106-1-5(a)(6)
None

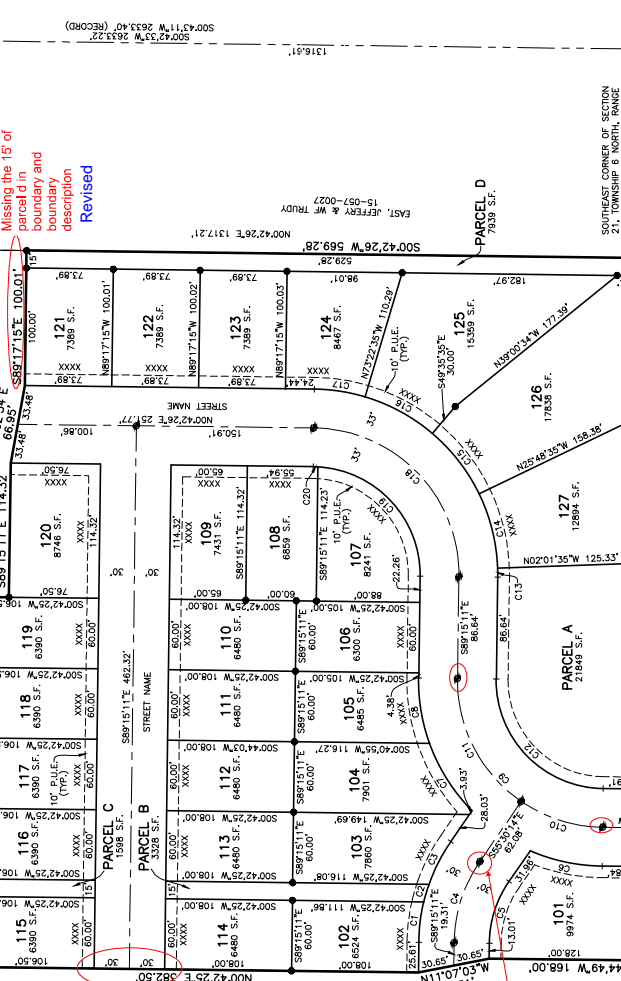
The existing location, widths, and other dimensions of all existing or platted buildings and structures within and immediately adjacent (within 30') to the tract of land to be subdivided, WCO 106-1-5(a)(6)
Added building

Monument improvement agreement and letter will be sent with next review for costs associated with the MIA on next review
Noted

Temporarily turnaround will probably be needed?
Added

Remove all circled tentative monuments
Removed

Note: show monument with a 'Subdivision'
Revised



Missing the '15' of parcel d in boundary description
Revised

All streets shown

15--07--0066
SODERBY LLC

15--07--0065
SODERBY LLC

PARCEL A
21049 S.F.

PARCEL B
3328 S.F.

PARCEL C
1598 S.F.

PARCEL D
7839 S.F.

101
8974 S.F.

102
8947 S.F.

103
7860 S.F.

104
7901 S.F.

105
6485 S.F.

106
6300 S.F.

107
8241 S.F.

108
6859 S.F.

109
7431 S.F.

110
6480 S.F.

111
6480 S.F.

112
6480 S.F.

113
6480 S.F.

114
6480 S.F.

115
8386 S.F.

116
6390 S.F.

117
6390 S.F.

118
6390 S.F.

119
6390 S.F.

120
8748 S.F.

121
7389 S.F.

122
7389 S.F.

123
7389 S.F.

124
8467 S.F.

125
15369 S.F.

PI	ARC LENGTH	CHD LENGTH	TANGENT	CHD BEARING	DELTA
C1	165.000	21.000	162.900	S67°43'10.10" W	34.642
C2	135.000	17.250	127.750	S33°33'10.10" W	27.709
C3	135.000	17.250	127.750	N33°33'10.10" E	27.709
C4	165.000	21.000	162.900	N67°43'10.10" E	34.642
C5	165.000	21.000	162.900	S67°43'10.10" W	34.642
C6	165.000	21.000	162.900	N67°43'10.10" E	34.642
C7	165.000	21.000	162.900	S67°43'10.10" W	34.642
C8	165.000	21.000	162.900	N67°43'10.10" E	34.642
C9	165.000	21.000	162.900	S67°43'10.10" W	34.642
C10	165.000	21.000	162.900	N67°43'10.10" E	34.642
C11	165.000	21.000	162.900	S67°43'10.10" W	34.642
C12	165.000	21.000	162.900	N67°43'10.10" E	34.642
C13	165.000	21.000	162.900	S67°43'10.10" W	34.642
C14	165.000	21.000	162.900	N67°43'10.10" E	34.642
C15	165.000	21.000	162.900	S67°43'10.10" W	34.642
C16	165.000	21.000	162.900	N67°43'10.10" E	34.642
C17	165.000	21.000	162.900	S67°43'10.10" W	34.642
C18	165.000	21.000	162.900	N67°43'10.10" E	34.642
C19	165.000	21.000	162.900	S67°43'10.10" W	34.642
C20	165.000	21.000	162.900	N67°43'10.10" E	34.642
C21	165.000	21.000	162.900	S67°43'10.10" W	34.642
C22	165.000	21.000	162.900	N67°43'10.10" E	34.642
C23	165.000	21.000	162.900	S67°43'10.10" W	34.642
C24	165.000	21.000	162.900	N67°43'10.10" E	34.642
C25	165.000	21.000	162.900	S67°43'10.10" W	34.642
C26	165.000	21.000	162.900	N67°43'10.10" E	34.642
C27	165.000	21.000	162.900	S67°43'10.10" W	34.642
C28	165.000	21.000	162.900	N67°43'10.10" E	34.642
C29	165.000	21.000	162.900	S67°43'10.10" W	34.642
C30	165.000	21.000	162.900	N67°43'10.10" E	34.642

Legend

- SECTION CORNER
- STAKE PLACES, NUMBERED AND ASSIGNED
- STREET CONTINUING MONUMENT
- BOUNDARY LINE
- LOT LINE
- ADJOINING PROPERTY
- ENCUMBRANCE
- SECTION MONUMENT TIE LINE
- ROAD CONTINUING

Scale: 1" = 50'

Project Info

Project Name: STAGECOACH ESTATES SUBDIVISION PHASE 1

Surveyor: J. FELT

Design: N. ANDERSON

Begin Date: 3-14-2023

Revised For: SUBDIVISION PHASE 1

Number: 6288-14

Scale: 1"=50'

Checked: _____ Deputy.

Weber County Recorder: _____

Weber County Recorder

Entry No.: _____

And Recorded In Book _____

Of The Official Records, Page _____

Recorded For: _____

Reeve & Associates, Inc.

IRA

TEL 801 961-5336 FAX 801 961-5988