



# POWDER POINT AT POWDER MOUNTAIN AMENDMENT 1

LOCATED IN THE NORTHEAST QUARTER OF SECTION 8, AND NORTHWEST QUARTER OF SECTION 9  
TOWNSHIP 7 NORTH, RANGE 2 EAST,  
SALT LAKE BASE AND MERIDIAN,  
WEBER COUNTY, UTAH  
SEPTEMBER 2023

parcel OS 11  
needs to show snow storage  
easement from original Plat unless  
vacating, if vacating need to note it  
also check with engineering if snow  
storage can be vacated

All lots are to be numbered  
consecutively under a definite system  
approved by the county surveyor. WCO  
106-1-5(a)(4)  
All lot numbers will need to be  
changed starting with lot Number  
8 to lot number 15

Add to Note: vacating snow storage  
easement from Powder Point At Powder  
Mountain Subdivision

FINAL OVERLOOK POINT SURVEYS/PLATS  
2014-1-17  
NONE  
N:\SUB\93\CA\02\2-758 - OVERLOOK POINT\CA\02\SURVEY\PLATS

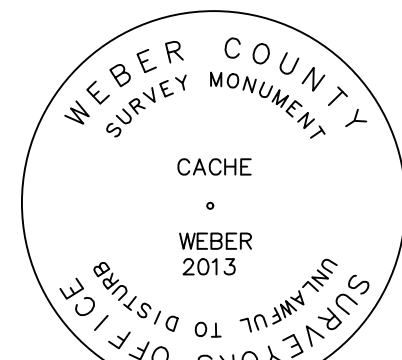
NORTHEAST CORNER SECTION 1,  
TOWNSHIP 7 NORTH, RANGE 1 EAST  
SALT LAKE BASE AND MERIDIAN  
FOUND GLO 1944, 4" BRASS CAP,  
GOOD CONDITION  
6" ABOVE GROUND  
DETAIL "B"

BASIS OF BEARINGS  
N 89°55'51" W 1381.07'  
(N 89°56'05" W 1380.98' RECORD)

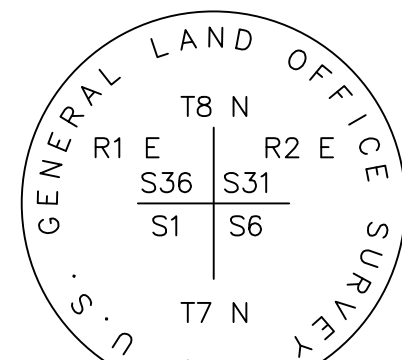
S 53°43'38" E  
9312.68' (TIE)

FOUND WEBER COUNTY LINE  
MONUMENT PER WEBER COUNTY  
SURVEYOR, 4" BRASS CAP 2013,  
GOOD CONDITION  
FLUSH IN CONCRETE  
DETAIL "A"

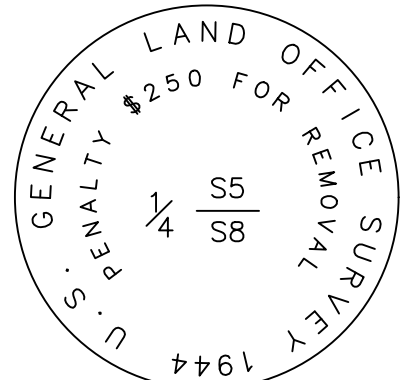
NORTH QUARTER CORNER SECTION  
8, TOWNSHIP 7 NORTH, RANGE 2 EAST  
SALT LAKE BASE AND MERIDIAN,  
FOUND 1944 GLO 4" BRASS CAP,  
GOOD CONDITION  
6" ABOVE GROUND  
DETAIL "C"



DETAIL "A"



DETAIL "B"



DETAIL "C"

## LEGEND

- BOUNDARY LINE
- SECTION LINE
- ADJOINER DEED LINES
- RIGHT-OF-WAY LINE
- ROAD CENTERLINE
- SECTION CORNER AS NOTED
- SET CL MONUMENT
- FOUND CL MONUMENT
- SET NO. 5 X 24" LONG REBAR WITH PLASTIC CAP STAMPED "TALISMAN"
- PUBLIC UTILITY & DRAINAGE EASEMENT
- SNOW STORAGE/REMOVAL EASEMENT
- SKI ACCESS EASEMENT

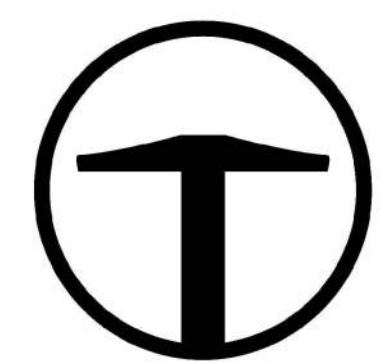
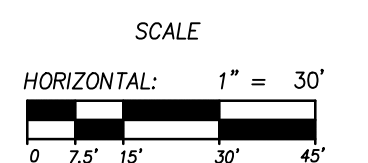
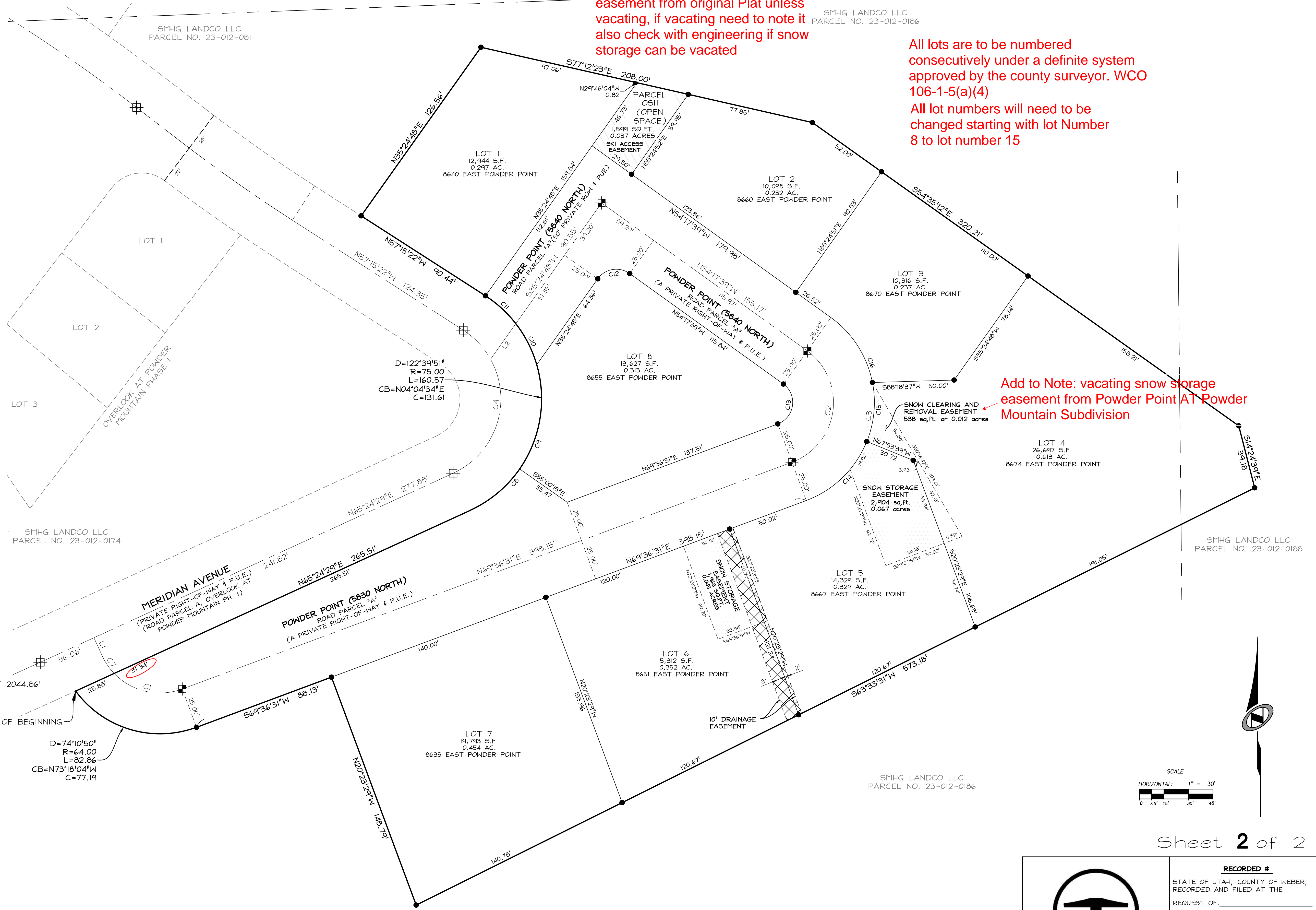
## CURVE TABLE

CURVE	RADIUS	LENGTH	DELTA	BEARING	CHORD
C1	39.00	45.27	66°30'00"	S77°08'28"E	42.77
C2	39.00	84.03	123°26'24"	N07°53'16"E	68.69
C3	64.00	138.40	123°54'10"	N07°39'26"E	112.97
C4	50.00	107.04	122°39'51"	N04°04'34"E	87.74
C5	50.00	82.48	94°31'06"	S18°08'56"W	73.44
C6	50.00	24.56	28°08'45"	S43°10'59"E	24.32
C7	39.00	13.14	19°17'58"	N34°14'29"W	13.07
C8	75.00	40.01	30°33'57"	S50°07'31"W	39.54
C9	75.00	66.90	51°06'22"	S09°17'21"W	64.70
C10	75.00	28.35	21°39'32"	N27°05'35"W	28.18
C11	75.00	25.31	19°20'01"	N47°35'22"W	25.19
C12	14.00	22.06	90°17'37"	S80°33'36"W	19.85
C13	14.00	30.09	123°07'52"	N08°02'28"E	24.62
C14	64.00	53.27	47°41'31"	N45°45'46"E	51.75
C15	64.00	36.77	32°55'06"	N05°27'27"E	36.27
C16	64.00	48.36	43°17'33"	N32°38'52"W	47.22

## LINE TABLE

LINE	LENGTH	BEARING
L1	12.11	N24°35'31"W
L2	26.71	S35°24'48"W

OVERLOOK POINT LLC  
3923 N. WOLF CREEK DR.  
EDEN, UT, 84310



TALISMAN  
CIVIL CONSULTANTS  
1588 SOUTH MAIN STREET  
SUITE 200  
SALT LAKE CITY, UT 84115  
801.743.1300

### RECORDED #

STATE OF UTAH, COUNTY OF WEBER,  
RECORDED AND FILED AT THE  
REQUEST OF: \_\_\_\_\_  
ENTRY NO: \_\_\_\_\_  
DATE: \_\_\_\_\_ TIME: \_\_\_\_\_  
BOOK: \_\_\_\_\_ PAGE: \_\_\_\_\_  
FEE \$ \_\_\_\_\_  
WEBER COUNTY RECORDER