

2023-06-26 FINAL OVERLOOK POINT SURVEY  
 2014-11-17 NINE  
 K:\SUBPROJECTS\0403022125 - OVERLOOK POINT\CAD\SURVEY\PLATS

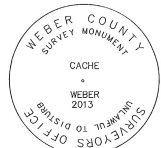
LOCATED IN THE NORTHEAST QUARTER OF SECTION 8, AND EAST QUARTER OF SECTION 9  
 TOWNSHIP 7 NORTH, RANGE 2 EAST,  
 SALT LAKE BASE AND MERIDIAN,  
 WEBER COUNTY, UTAH  
 JULY 2023

BASIS OF BEARINGS  
 N 89°55'51" W 1381.07'  
 (N 89°56'05" W 1380.98' RECORD)

S 53°43'38" E  
 9312.68' (TIE)

FOUND WEBER COUNTY LINE  
 MONUMENT PER WEBER COUNTY  
 SURVEYOR, 4" BRASS CAP 2013,  
 GOOD CONDITION  
 FLUSH IN CONCRETE  
 DETAIL "A"

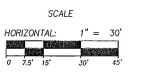
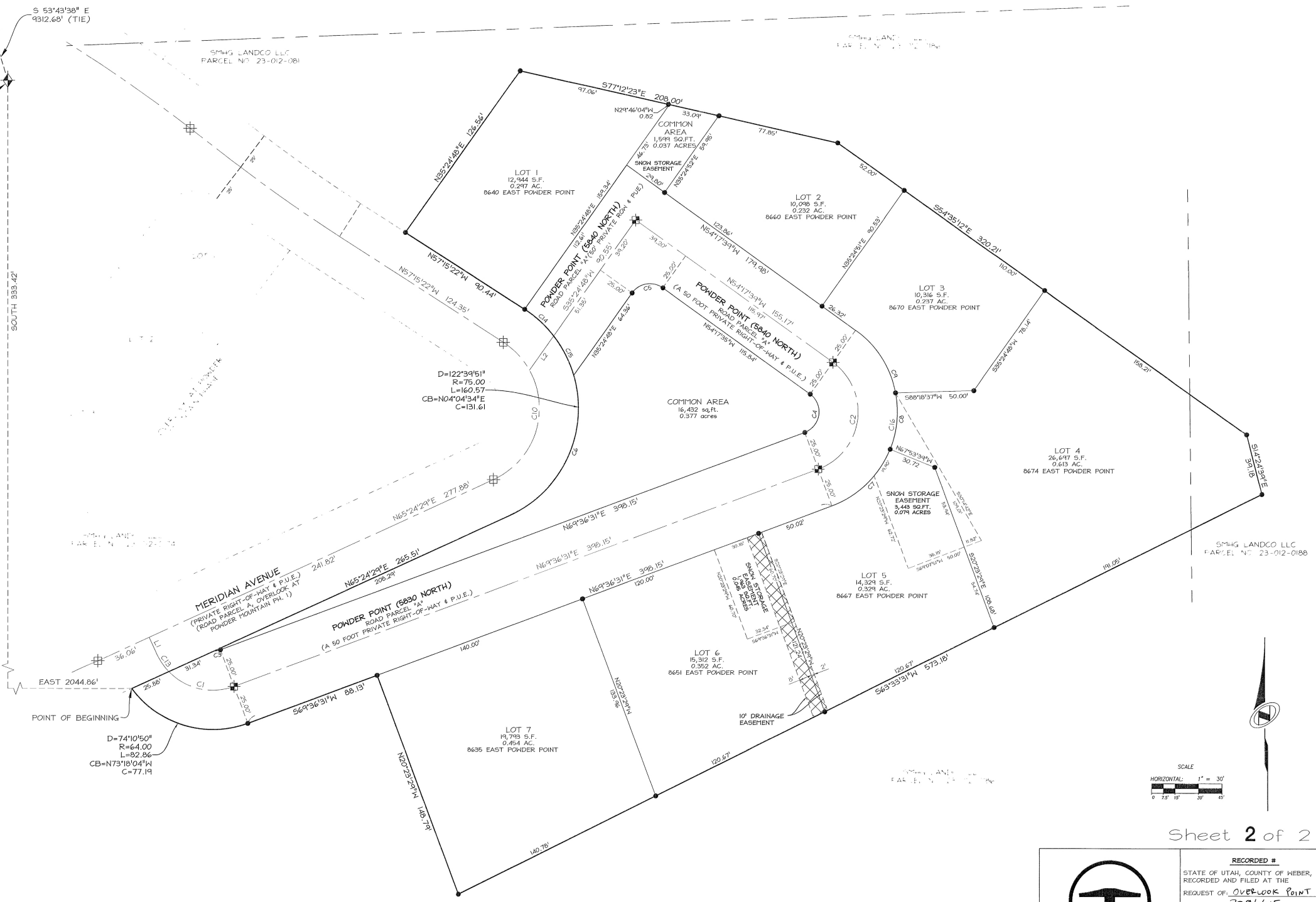
NORTH QUARTER CORNER SECTION  
 8, TOWNSHIP 7 NORTH, RANGE 2 EAST  
 SALT LAKE BASE AND MERIDIAN,  
 FOUND 1944 GLO 4" BRASS CAP,  
 GOOD CONDITION  
 6" ABOVE GROUND  
 DETAIL "C"



- LEGEND**
- BOUNDARY LINE
  - SECTION LINE
  - ADJOINER DEED LINES
  - RIGHT-OF-WAY LINE
  - ROAD CENTERLINE
  - SECTION CORNER AS NOTED
  - SET CL MONUMENT
  - FOUND CL MONUMENT
  - SET NO. 5 X 24" LONG REBAR WITH PLASTIC CAP STAMPED "TALISMAN"
  - PUBLIC UTILITY & DRAINAGE EASEMENT
  - SNOW STORAGE EASEMENT

CURVE TABLE					
CURVE	RADIUS	LENGTH	DELTA	BEARING	CHORD
C1	391.00	45.27	66°30'00"	S77°09'28"E	42.77
C2	391.00	84.03	123°26'24"	N07°53'16"E	68.69
C3	14.00	4.59	18°46'20"	N78°59'42"E	4.57
C4	14.00	30.09	123°07'52"	N08°02'28"E	24.62
C5	14.00	22.06	90°17'37"	S80°53'36"W	19.85
C6	75.00	106.91	81°40'19"	S24°34'20"W	98.08
C7	64.00	53.27	47°41'31"	N45°45'46"E	51.75
C8	64.00	36.77	32°55'06"	N05°27'12"E	36.27
C9	64.00	48.36	43°17'33"	N32°38'52"W	47.22
C10	50.00	107.04	122°39'51"	N04°04'34"E	87.74
C11	50.00	24.56	28°08'45"	S43°10'59"E	24.32
C12	50.00	82.48	144°31'06"	S18°08'56"W	73.44
C13	391.00	13.14	19°17'58"	N34°14'29"W	13.07
C14	75.00	25.31	19°20'01"	N47°35'22"W	25.19
C15	75.00	28.35	21°39'32"	N27°05'35"W	28.18
C16	64.00	138.40	123°54'10"	N07°39'26"E	112.97

LINE TABLE		
LINE	LENGTH	BEARING
L1	12.11	N24°35'31"W



Sheet 2 of 2



RECORDED #  
 STATE OF UTAH, COUNTY OF WEBER,  
 RECORDED AND FILED AT THE  
 REQUEST OF: OVERLOOK POINT  
 ENTRY NO: 3296615  
 DATE: 31-AUG-23 TIME: 3:19pm  
 BOOK: 96 PAGE: 53 of 34  
 FEE \$ 116.00

OVERLOOK POINT LLC  
 3923 N WOLF CREEK DR