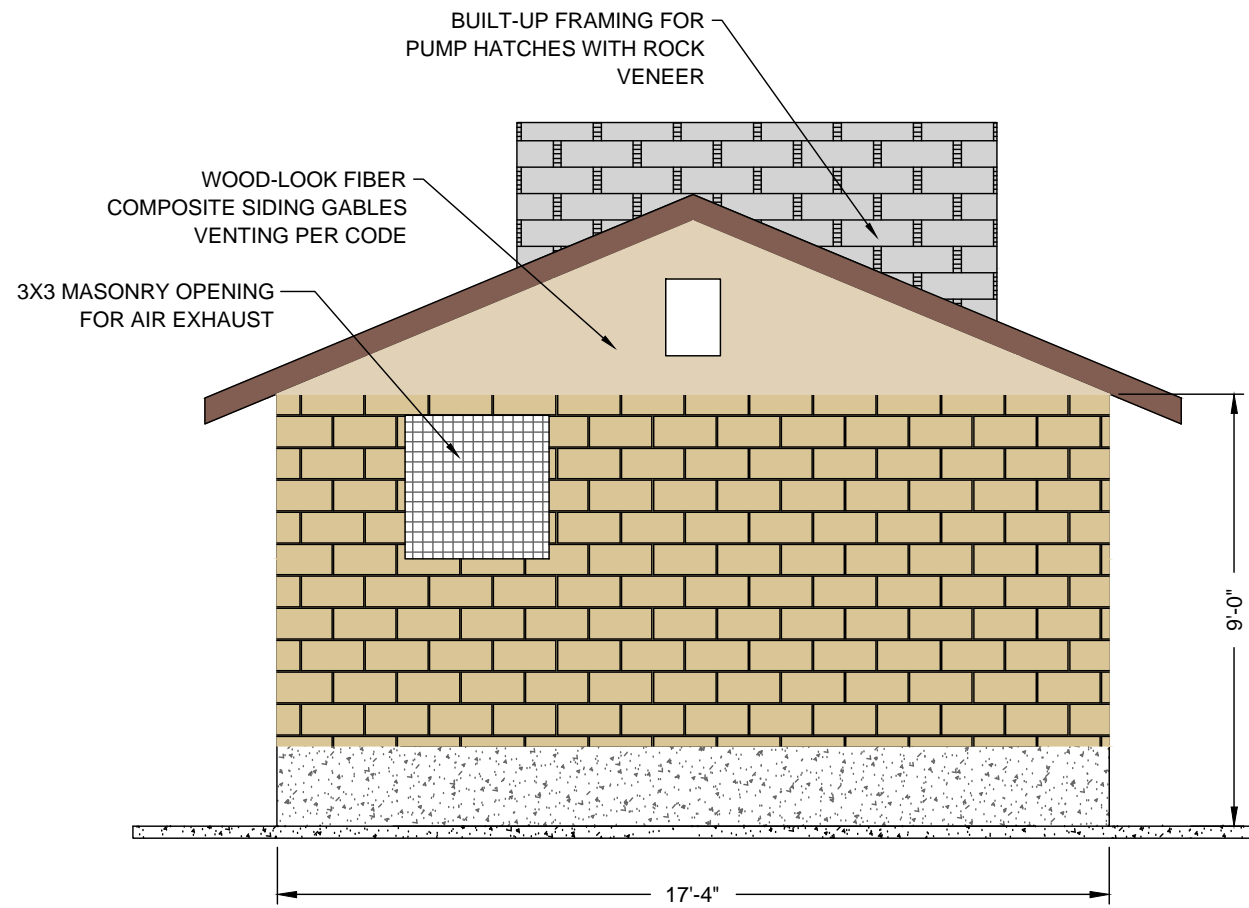


NORTH ELEVATION



SOUTH ELEVATION

MOTION ACTIVATED ENTRY LIGHT COMPLYING WITH UPPER VALLEY LIGHT ORDINANCE

3X3 MASONRY OPENING FOR MOTORIZED LOUVERED AIR INTAKE

BUILT-UP FRAMING FOR PUMP HATCHES WITH ROCK VENEER

WOOD-LOOK FIBER COMPOSITE SIDING GABLES VENTING PER CODE

3X3 MASONRY OPENING FOR AIR EXHAUST

9'-0"

17'-4"

Revisions		Date	Scale	Designed	Drafted	Checked
	Description		Custom	DW	KAN	DW

WOLF CREEK WATER AND SEWER I.D.,
REUSE PROJECT
LOWER PUMP STATION
ELVE NORTH-SOUTH

GARDNER ENGINEERING
 CIVIL • LAND PLANNING
 MUNICIPAL • LAND SURVEYING
 1580 W 2100S, WEST HAVEN, UT 84401
 P 801.476.0202 F 801.476.0066