

Weber County Planning  
2380 Washington Blvd, Suite 240  
Ogden, Utah 84401

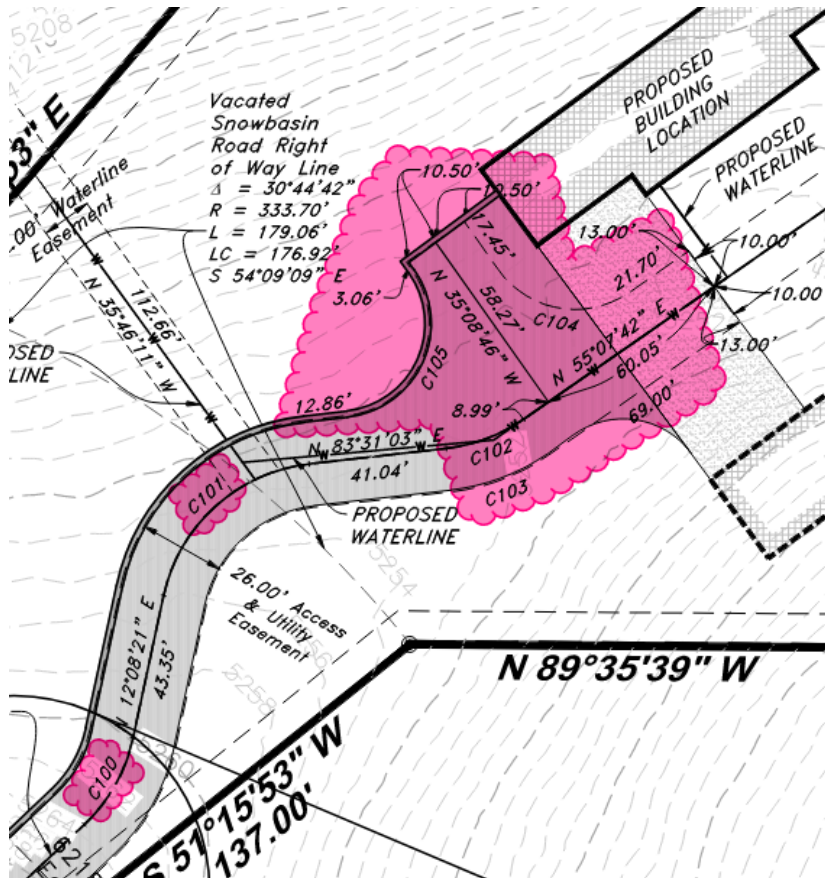
ATTN: Felix Lleverino

**RE: Samarel Subdivision**

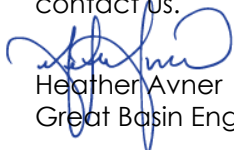
Felix,

After coordination with the owner's architect, the firetruck hammerhead turnaround location has been revised. The preliminary plat and plat have been updated to reflect the change to the access and utility easement in this area. All other items on both the preliminary plat and plat remain the same as the previous submittal. The image below indicates the revised easement area.

The easement curve table was revised to include additional curves from the easement for clarity. These areas are also included in the pink area of the snippet below.



Should you have any questions regarding these responses or revisions, please feel free to contact us.



Heather Avner  
Great Basin Engineering