



SITE ID: SAL EL MONTE
 SITE ID NUMBER: 5000232110
 SITE ADDRESS: 1851 VALLEY DR.
 OGDEN, UT 84404-6061
 SITE COORDINATES: 41.23956911, -111.92802336
 SITE CONFIGURATION: MW ADD

SHEET INDEX	
SHEET	DESCRIPTION
T1.0	COVER SHEET
T2.0	OVERALL SITE PLAN
T2.1	ENLARGED SITE PLAN
T3.0	EX. & NEW EQUIPMENT LAYOUTS
T4.0	EX. & NEW ELEVATIONS
T5.0	EQUIPMENT DETAILS
T5.1	EQUIPMENT DETAILS

PRESENTED BY:

15660 MIDWEST RD. SUITE 140 OAKBROOK TERRACE, IL 60181

SITE NAME:
 SAL EL MONTE
 SITE ADDRESS:
 1851 VALLEY DR.
 OGDEN, UT 84404-6061
 SITE COUNTY:
 WEBER COUNTY

SITE ID:
 5000232110

REVISIONS			
Rev.	Date	Description	By
0	07.28.23	100% CONSTRUCTION	GW
1			
2			
3			
4			
5			
6			
7			

STAMPING SIGNATURE:

THIS WORK WAS PERFORMED BY ME OR UNDER MY SUPERVISION. CONSTRUCTION OF THIS PROJECT WAS OBSERVED. ALL SCALES ARE IN FEET UNLESS NOTED OTHERWISE.

SHEET TITLE:
 COVER SHEET
 SHEET NUMBER:
 T1.0
 DRAWN BY: GW
 CHK BY: CM
 APV BY: CM

SITE INFORMATION	
SITE INFORMATION	
SITE NAME:	SAL EL MONTE
SITE ID:	5000232110
ATC SITE NAME:	SAL EL MONTE, UT
ATC SITE NUMBER:	416736
SITE ADDRESS:	1851 VALLEY DR. OGDEN, UT 84404-6061
COUNTY:	WEBER COUNTY
JURISDICTION:	WEBER COUNTY
ASSESSOR'S PARCEL #	13-071-0010
LATITUDE:	41.23956911
LONGITUDE:	-111.92802336
STRUCTURE TYPE:	EQUIPMENT SHELTER
STRUCTURE HEIGHT:	9'-0"±
POWER PROVIDER:	PACIFICORP 1.888.221.7070

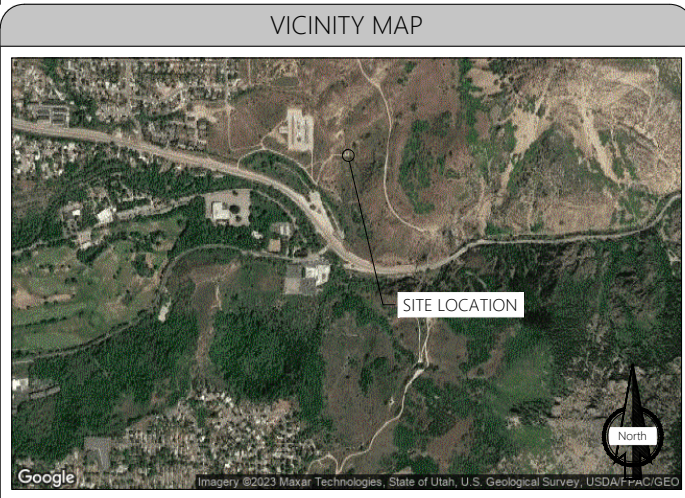
PROJECT DESCRIPTION
MODIFICATION OF AN EXISTING "NON-INHABITABLE" VERIZON TELECOMMUNICATIONS SITE CONSISTING OF:
INSTALLING
<ul style="list-style-type: none"> (2) NEW BALLAST MOUNTS (2) NEW MICROWAVE ANTENNAS (2) NEW MICROWAVE RADIOS (1) NEW RACK MOUNTED RADIO LINK (1) NEW RACK MOUNTED OVP
WITHIN THE EXISTING EQUIPMENT SHELTER.
INSTALLATION IS UNMANNED AND NOT FOR HUMAN HABITATION PUBLIC ACCESS IS RESTRICTED A.D.A. ACCESSIBILITY NOT REQUIRED.

PROJECT TEAM	
PROPERTY OWNER: RAINBOW GARDENS CORP. 1851 VALLEY DR. OGDEN, UT 84404	ENGINEER OF RECORD: INSITE INC. 15660 MIDWEST RD. SUITE 140 OAKBROOK TERRACE, IL 60181 RYAN GUERRERO PH: 970.690.6921 E-MAIL: GUERRERO@INSITE-INC.COM
TOWER OWNER: AMERICAN TOWER CORP. 10 PRESIDENTIAL WAY WOBURN, MA 01801	APPLICANT: VERIZON 10000 PARK MEADOWS DR. LONE TREE, COLORADO 80124
SITE ACQUISITION CONSULTANT: INSITE INC. 15660 MIDWEST RD. SUITE 140 OAKBROOK TERRACE, IL 60181 GREG DIBONA PH: 847.257.2489 E-MAIL: DIBONA@INSITE-INC.COM	A&E PROJECT MANAGER: INSITE INC. 15660 MIDWEST RD. SUITE 140 OAKBROOK TERRACE, IL 60181 COLE MOSSMAN PH: 970.819.0335 E-MAIL: MOSSMAN@INSITE-INC.COM

DRIVING DIRECTIONS
FROM SALT LAKE CITY INTERNATIONAL AIRPORT:
GET ON I-80 E FROM N 3700 W AND W CROSSBAR RD. 7 MIN (3.2 MI). HEAD SOUTH ON N 3700 W TOWARD 510 N. 0.9 MI. N 3700 W TURNS SLIGHTLY RIGHT AND BECOMES W CROSSBAR RD. 0.7 MI. TAKE THE RAMP ONTO TERMINAL DR. 0.5 MI. USE THE LEFT 2 LANES TO TAKE THE I-80 E RAMP TO CITY CTR/OGDEN/PROVO. 0.7 MI. USE THE RIGHT LANE TO KEEP LEFT AT THE FORK, FOLLOW SIGNS FOR I-80 E AND MERGE ONTO I-80 E. 0.4 MI. TAKE UT-67 N/LEGACY PKWY AND US-89 N/N HWY 89 TO S 1200 E ST/HARRISON BLVD IN SOUTH OGDEN. 29 MIN (30.2 MI). MERGE ONTO I-80 E. 0.6 MI. USE THE RIGHT 2 LANES TO TAKE EXIT 117 TO MERGE ONTO I-215 N TOWARD OGDEN. 5.0 MI. USE THE LEFT 2 LANES TO TAKE EXIT 26 FOR LEGACY PKWY N. 0.5 MI. CONTINUE ONTO UT-67 N/LEGACY PKWY. 11.0 MI. USE THE LEFT 2 LANES TO TAKE EXIT 11 TO MERGE ONTO US-89 N/N HWY 89 TOWARD SO OGDEN. 13.1 MI. CONTINUE ON S 1200 E ST/HARRISON BLVD. DRIVE TO 1420 ST S/OLD CANYON RD. 14 MIN (7.1 MI). TURN RIGHT ONTO S 1200 E ST/HARRISON BLVD. PASS BY WENDY'S (ON THE RIGHT IN 0.3 MI). 6.1 MI. TURN RIGHT ONTO UT-39 E/CANYON RD. 0.9 MI. TURN LEFT ONTO CANYON RD. 131 FT. TURN LEFT ONTO 1420 ST S/OLD CANYON RD. 285 FT.
ESTIMATED DISTANCE: 40.5 MILES ESTIMATED TIME: 47 MINUTES

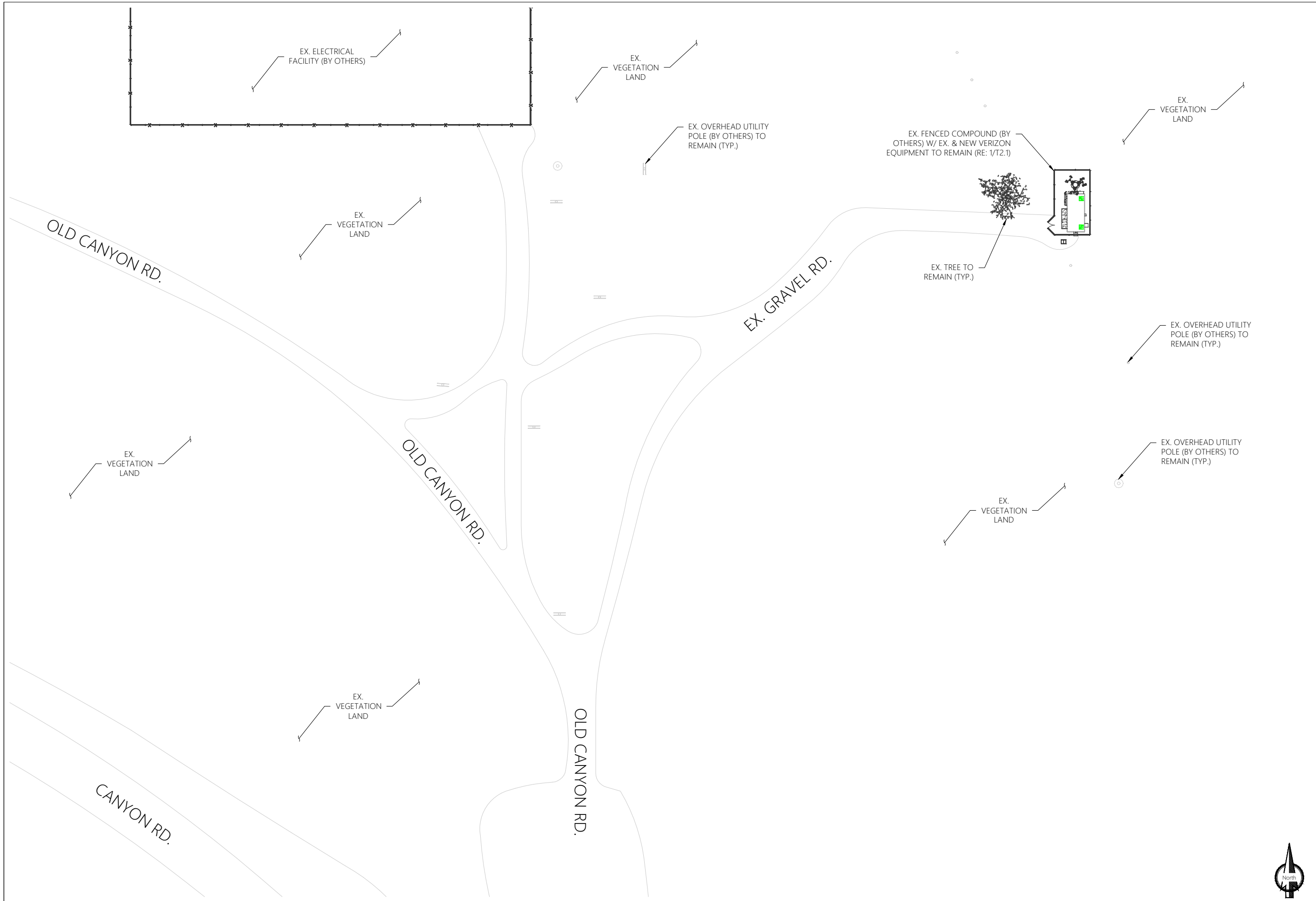
APPLICABLE CODES
ALL CONSTRUCTION, ALTERATION, OR DEMOLITION SHALL BE PERFORMED AND MATERIALS INSTALLED IN ACCORDANCE WITH THE CURRENT EDITIONS OF THE FOLLOWING CODES AS ADOPTED BY THE LOCAL GOVERNING AUTHORITIES TO INCLUDE COMPLIANCE WITH THE LATEST FEDERAL STATE, AND LOCAL AMENDMENTS, REGULATIONS AND ORDINANCES.
GOVERNING CODES AS APPLICABLE: 2021 IECC, 2021 IBC, 2021 IEBC, 2021 IRC, 2021 IMC, 2021 IPC, 2021 IFGC, 2020 NEC
MANDATORY: CONTRACTOR TO CALL TO VERIFY UTILITIES, AT LEAST TWO WORKING DAYS PRIOR TO DIGGING. BEFORE YOU DIG, CALL: 1-800-662-4111 HTTP://CALL811.COM/MAP-PAGE/UTAH
THE INFORMATION CONTAINED IN THIS SET OF DOCUMENTS IS PROPRIETARY BY NATURE. ANY USE OR DISCLOSURE OTHER THAN THAT WHICH RELATES TO VERIZON SERVICES IS STRICTLY PROHIBITED.

Know what's below.
Call before you dig.



REFERENCE DOCUMENTS	
DOCUMENT NAME	DATE
EX. CONSTRUCTION DRAWINGS; LAB	09.29.22

V:\SAL EL MONTE\MW ADD\A&E\CAD\SAL EL MONTE_A and E_MW_A DD.dwg PLOT DATE: 7/28/2023 BY: Gary Watts



PRESENTED BY:

Insite inc.
Wireless Consulting Services
15660 MIDWEST RD. SUITE 140 OAKBROOK TERRACE, IL 60181

SITE NAME:
SAL EL MONTE

SITE ADDRESS:
**1851 VALLEY DR.
OGDEN, UT 84404-6061**

SITE COUNTY:
WEBER COUNTY

SITE ID:
5000232110

REVISIONS

Rev.	Date:	Description:	By:
0	07.28.23	100% CONSTRUCTION	GW
1			
2			
3			
4			
5			
6			
7			

STAMPING SIGNATURE:

PROFESSIONAL ENGINEER
No. 9094848-2202
RYAN THOMAS GUERRERO
07/28/2023
STATE OF UTAH

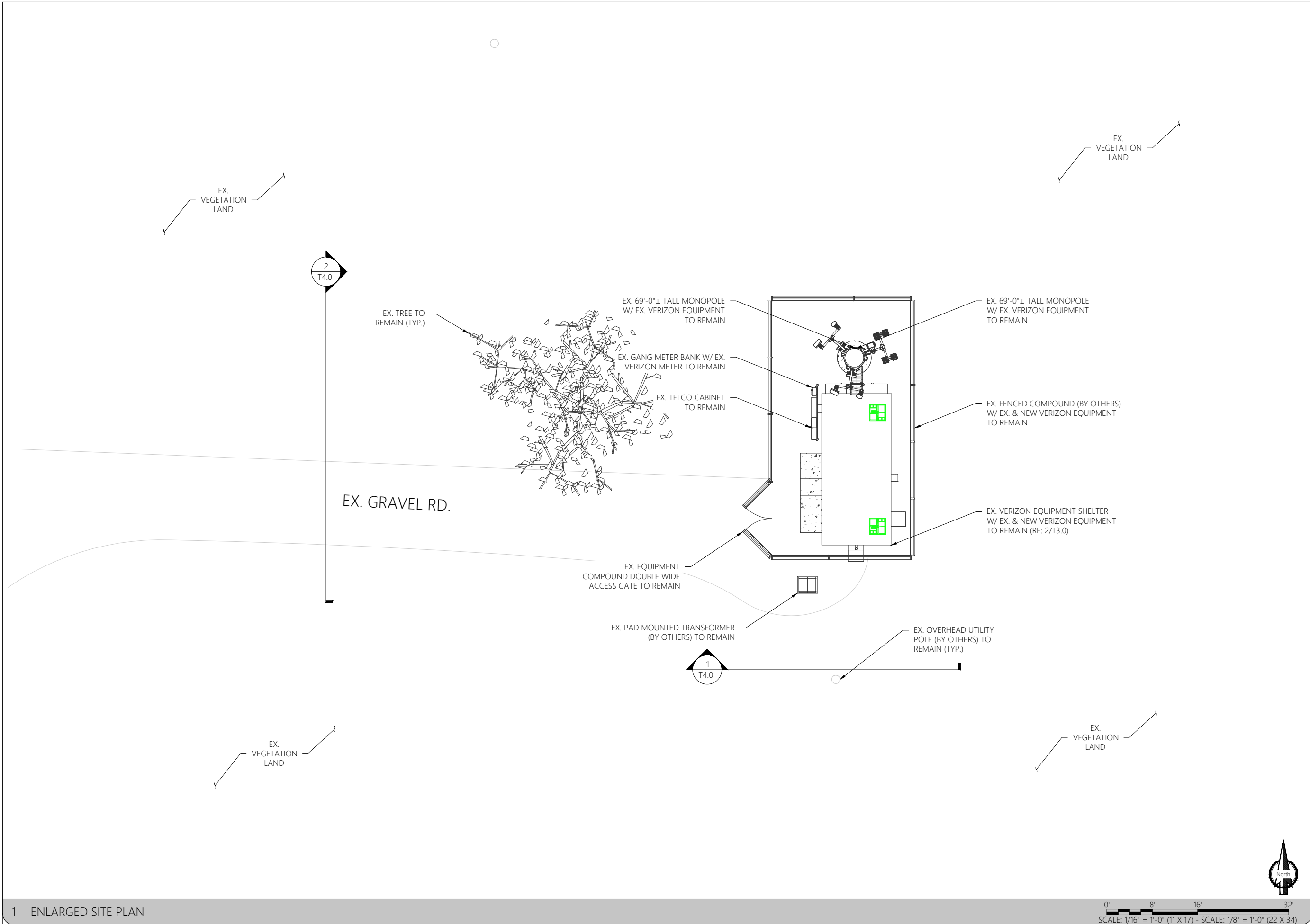
THIS WORK WAS PERFORMED BY ME OR UNDER MY SUPERVISION. CONSTRUCTION OF THIS PROJECT WAS UNDER MY OBSERVATION. ALL SCALES ARE IN FEET UNLESS OTHERWISE NOTED.

SHEET TITLE:
OVERALL SITE PLAN

SHEET NUMBER:
T2.0

DRAWN BY: **GW** CHK BY: **CM** APV BY: **CM**

V:\SAL EL MONTE\MW ADD\A&E\CAD\SAL EL MONTE_A and E_MW_A DD.dwg PLOT DATE: 7/28/2023 BY: Gary Watts



SITE NAME:
SAL EL MONTE

SITE ADDRESS:
 1851 VALLEY DR.
 OGDEN, UT 84404-6061

SITE COUNTY:
 WEBER COUNTY

SITE ID:
 5000232110

REVISIONS			
Rev.	Date:	Description:	By:
0	07.28.23	100% CONSTRUCTION	GW
1			
2			
3			
4			
5			
6			
7			

STAMPING SIGNATURE:

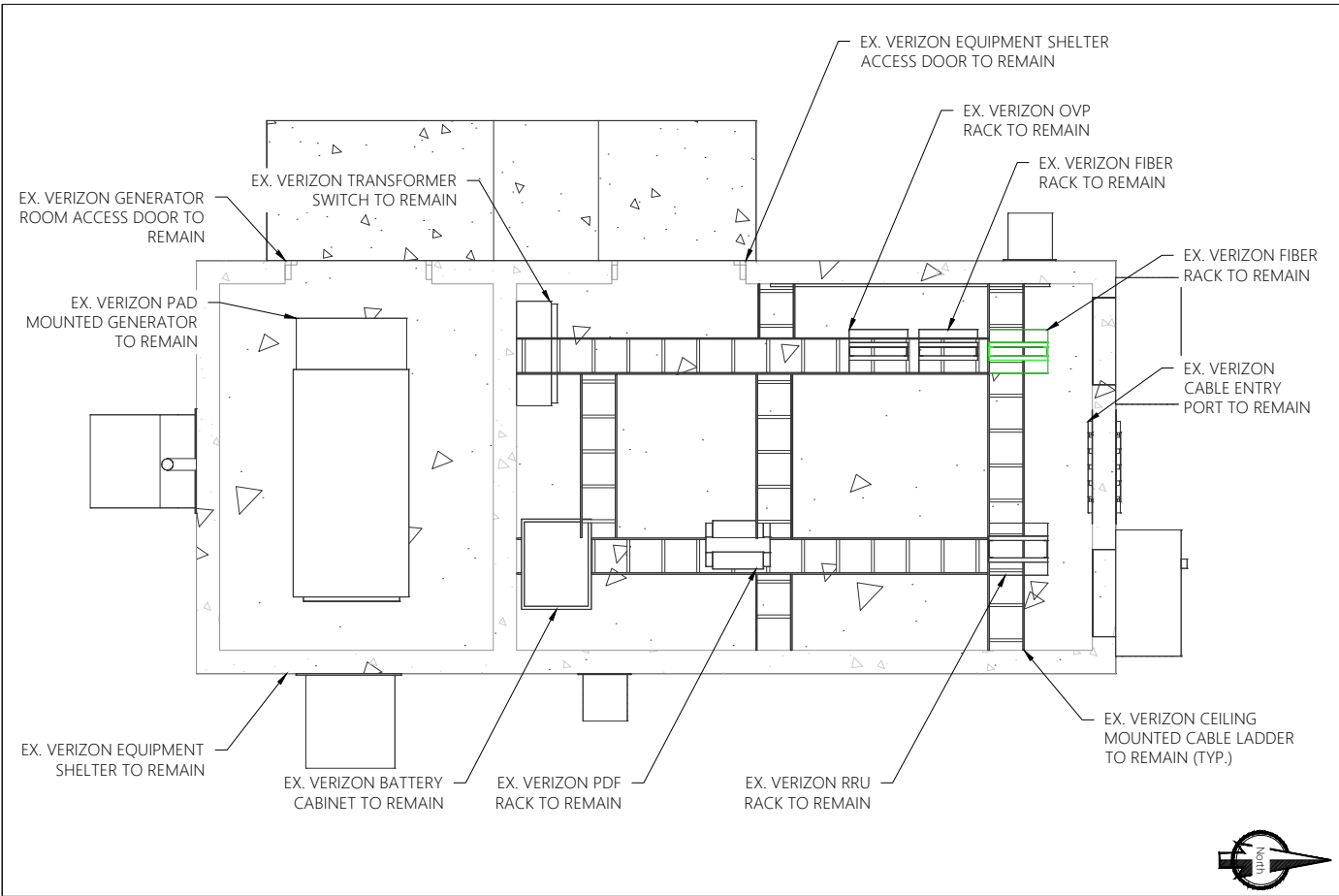


SHEET TITLE:

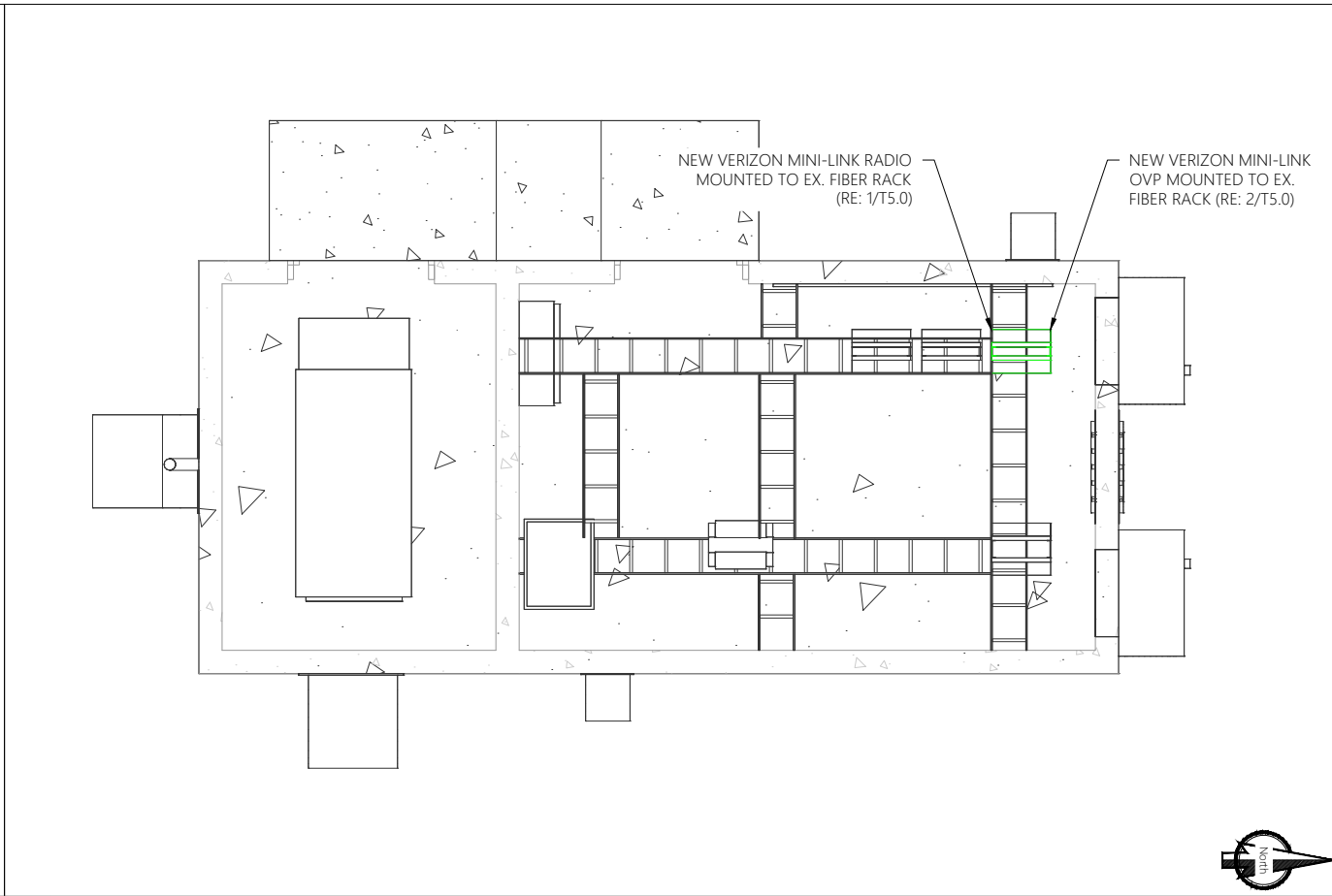
ENLARGED SITE PLAN

SHEET NUMBER:
 T2.1

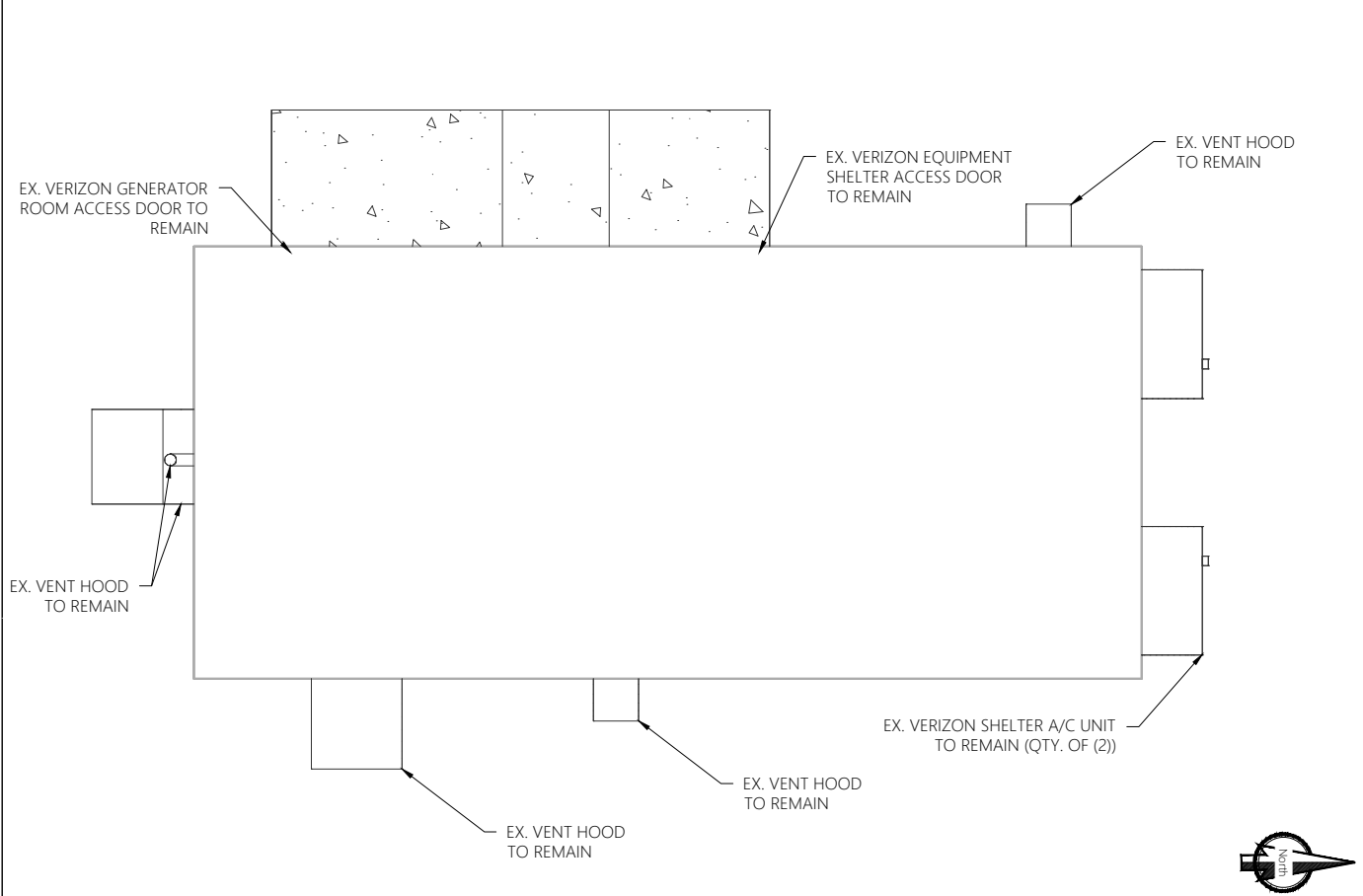
DRAWN BY:	CHK BY:	APV BY:
GW	CM	CM



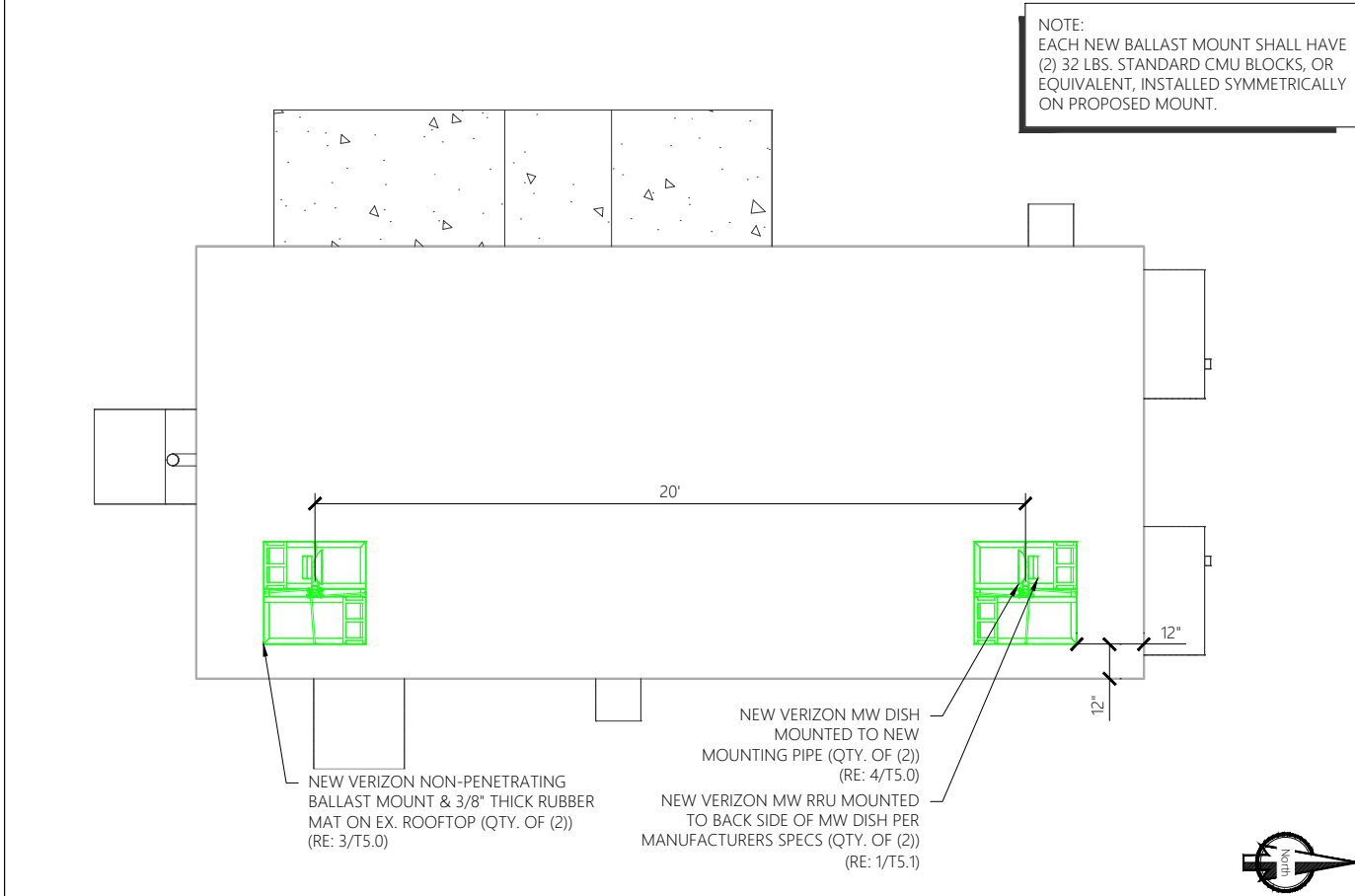
1 EX. INTERIOR SHELTER PLAN
 SCALE: 3/16" = 1'-0" (11 X 17) - SCALE: 3/8" = 1'-0" (22 X 34)



2 NEW INTERIOR SHELTER PLAN
 SCALE: 3/16" = 1'-0" (11 X 17) - SCALE: 3/8" = 1'-0" (22 X 34)



3 EX. EXTERIOR SHELTER PLAN
 SCALE: 3/16" = 1'-0" (11 X 17) - SCALE: 3/8" = 1'-0" (22 X 34)



4 NEW EXTERIOR SHELTER PLAN
 SCALE: 3/16" = 1'-0" (11 X 17) - SCALE: 3/8" = 1'-0" (22 X 34)

PRESENTED BY:

15660 MIDWEST RD. SUITE 140 OAKBROOK TERRACE, IL 60181

SITE NAME:
 SAL EL MONTE

SITE ADDRESS:
 1851 VALLEY DR.
 OGDEN, UT 84404-6061

SITE COUNTY:
 WEBER COUNTY

SITE ID:
 5000232110

REVISIONS			
Rev.	Date	Description	By
0	07.28.23	100% CONSTRUCTION	GW
1			
2			
3			
4			
5			
6			
7			

STAMPING SIGNATURE:

THIS WORK WAS PREPARED BY ME OR UNDER MY SUPERVISION. CONSTRUCTION OF THIS PROJECT WAS OBSERVED. ALL SCALES ARE IN FEET UNLESS NOTED OTHERWISE.

SHEET TITLE:
 EX. & NEW EQUIPMENT LAYOUTS

SHEET NUMBER:
 T3.0

DRAWN BY: GW CHK BY: CM APV BY: CM

V:\SAL EL MONTE\MW ADD\486\CAD\SAL EL MONTE_A and E_MW A DD.dwg PLOT DATE: 7/28/2023 BY: Gary Watts

PRESENTED BY:



SITE NAME:

SAL EL MONTE

SITE ADDRESS:

1851 VALLEY DR.

OGDEN, UT 84404-6061

SITE COUNTY:

WEBER COUNTY

SITE ID:

5000232110

REVISIONS

Rev.	Date:	Description:	By:
0	07.28.23	100% CONSTRUCTION	GW
1			
2			
3			
4			
5			
6			
7			

STAMPING SIGNATURE:



THIS WORK WAS PERFORMED BY ME OR UNDER MY SUPERVISION. CONSTRUCTION OF THIS PROJECT WAS OBSERVED. ALL SCALES ARE IN FEET AND INCHES.

SHEET TITLE:

EX. & NEW ELEVATIONS

SHEET NUMBER:

T4.0

DRAWN BY:	CHK BY:	APV BY:
GW	CM	CM

T.O. EX. MONOPOLE (BY OTHERS)
75'-0±

EX. VERIZON EQUIPMENT RAD CENTER
67'-0±

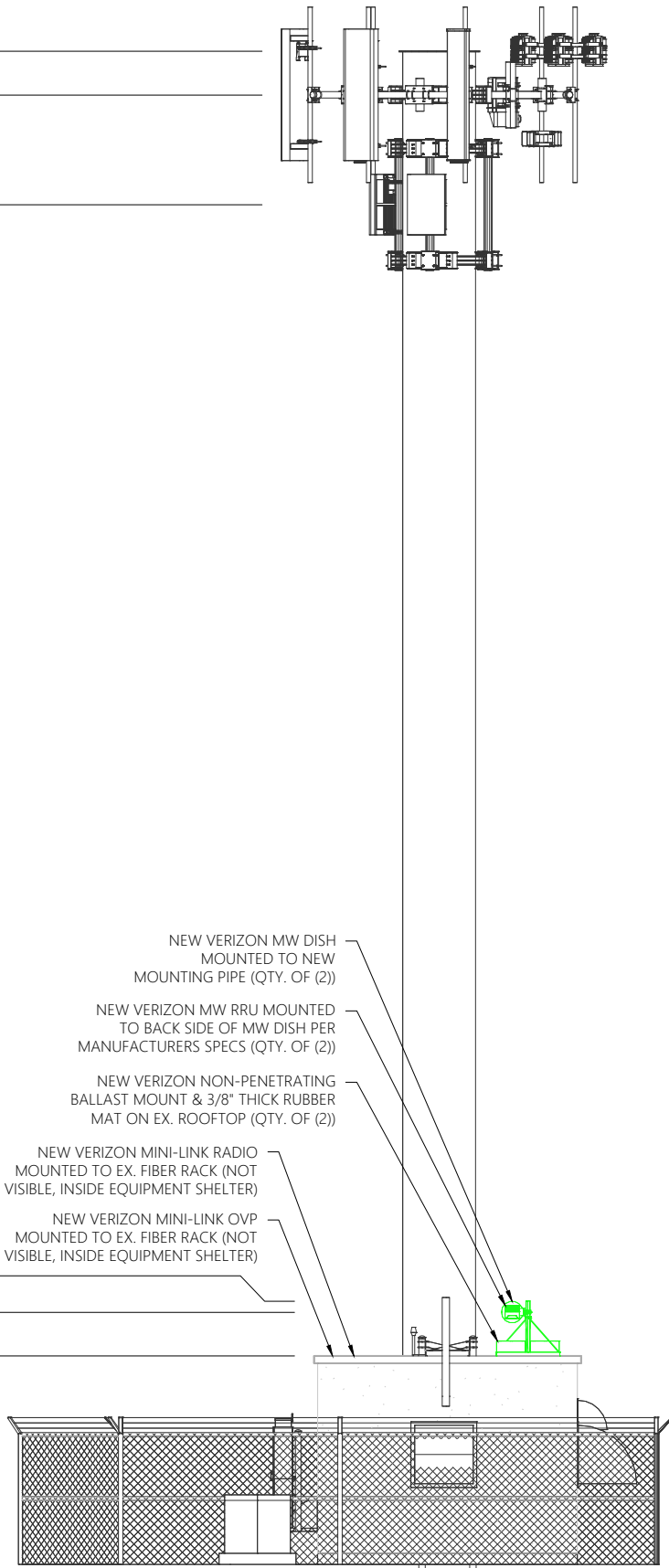
EX. VERIZON EQUIPMENT RAD CENTER
62'-0±

NEW VERIZON MW DISH TIP HEIGHT
11'-6±

NEW VERIZON MW DISH RAD CENTER
11'-0±

T.O. EX. EQUIPMENT SHELTER
9'-0±

EX. GRADE
0'-0±



0' 4' 8' 16'
SCALE: 1/8" = 1'-0" (11 X 17) - SCALE: 1/4" = 1'-0" (22 X 34)

1 NEW SOUTH ELEVATION

T.O. EX. MONOPOLE (BY OTHERS)
75'-0±

EX. VERIZON EQUIPMENT RAD CENTER
67'-0±

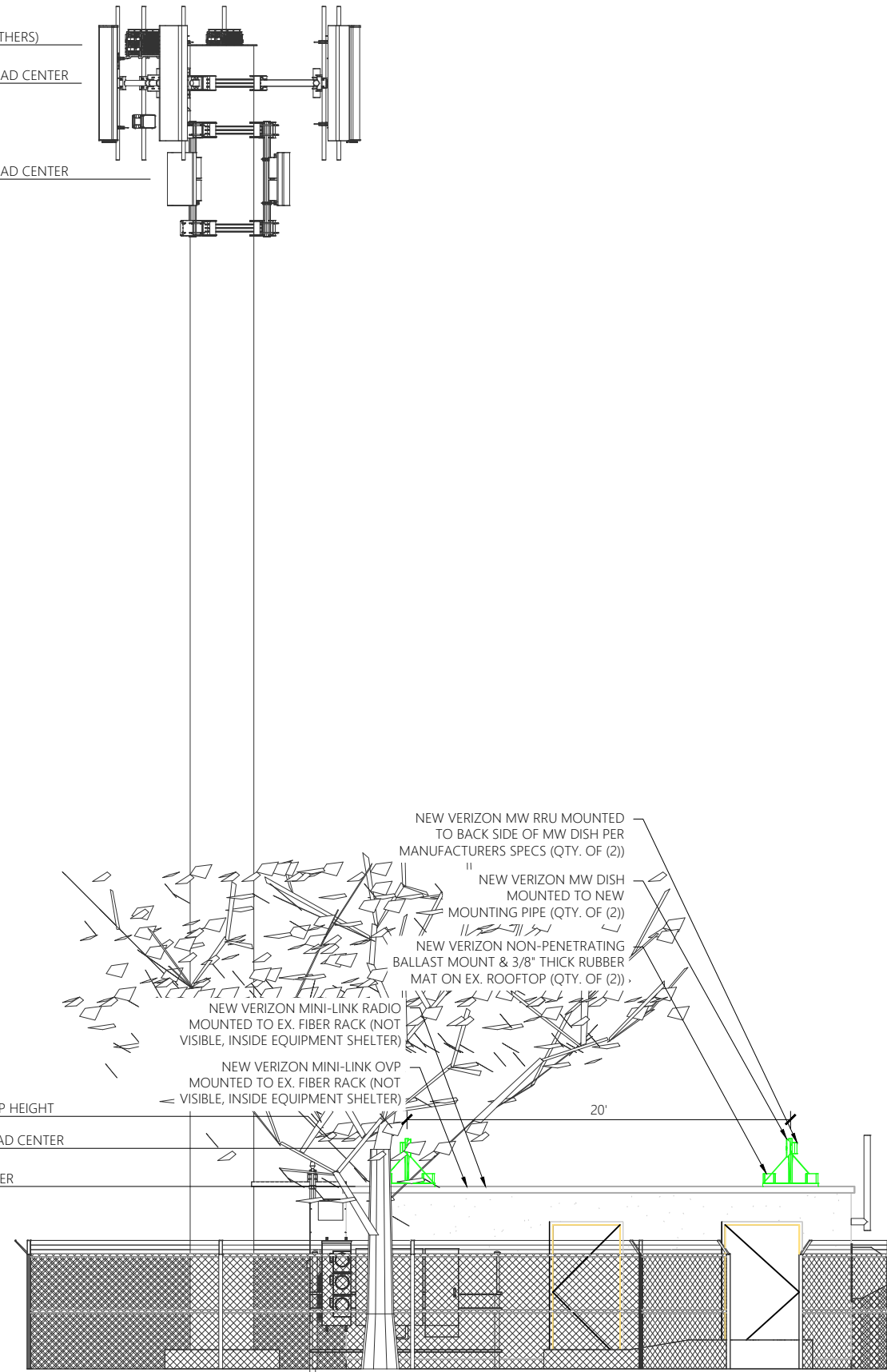
EX. VERIZON EQUIPMENT RAD CENTER
62'-0±

NEW VERIZON MW DISH TIP HEIGHT
11'-6±

NEW VERIZON MW DISH RAD CENTER
11'-0±

T.O. EX. EQUIPMENT SHELTER
9'-0±

EX. GRADE
0'-0±



0' 4' 8' 16'
SCALE: 1/8" = 1'-0" (11 X 17) - SCALE: 1/4" = 1'-0" (22 X 34)

2 NEW WEST ELEVATION

V:\SAL EL MONTE\MW ADD\ARE\CAD\SAL EL MONTE_A and E_MW_A.DWG PLOT DATE: 7/28/2023 BY: Gary Watts

MINI-LINK 6651/3 Compact end node



MINI-LINK 6651/3

Compact high performance
1 RU radio link

Fanless design

- 1+0
- Support for up to 7-112MHz channel bandwidth and up to 4096QAM modulation
- Radio link capacity up to 1.4Gbps in a 112 MHz channel
- Supports Adaptive Code Modulation

• 1 coax interfaces for Radio Link connection using RAU2X or MINI-LINK 6363/6364/6365

- 4 x 1G/2.5 G SFP
- 2 x FE/1G RJ45
- 8xE1
- Local Management
- Power supply: -48V

- Built in 14.5 Gbps Ethernet switch/router
- Customer and Provider bridge, QoS, HQoS
- Support for up to 128 L3 VPNs
- Synchronous Ethernet, 1588v2 Time/Phase sync



Power 6393 AC Main Unit + 2x PDU 40 03



PDU 40 01



PDU 40 02



PDU 40 03



Power 6393

POWER 6393, MODULAR POWER SUPPLY POWER 3693 IS A MODULAR POWER SUPPLY CONCEPT, THAT CAN SUPPORT WITH AC OR DC INPUT POWER, FOR LOW POWER APPLICATIONS UP TO 200W. THE MODULAR SOLUTION CONTAINS OF TWO MAIN UNIT:

POWER 6393 AC MAIN UNIT
POWER 6393 DC MAIN UNIT

THE MAIN UNITS CAN BE CONFIGURED WITH EITHER ONE OR TWO OUTPUT MODULES (PDUs). THE PDU'S ARE AVAILABLE IN THREE VARIANTS:

PDU 40 01: 1 PORT POWER OVER ETHERNET WITH SURGE PROTECTION

PDU 40 02: 1 PORT POWER OVER ETHERNET WITH LIGHTNING PROTECTION

PDU 40 03: 2 PORT -48 VDC WITH LIGHTNING PROTECTION

THE OUTPUT DC POWER CAN BY FED THROUGH POWER CABLE OR BY POWER OVER ETHERNET (PoE) THROUGH AN ETHERNET CABLE.

THE COMPACT POWER 6393 FOLLOWS ERICSSON RADIO SYSTEM FORM FACTOR, IT CAN BE USED BOTH INDOOR OR OUTDOOR AND MOUNTED ON WALLS OR POLLS. CONVECTIONAL COOLING CONCEPT AVOIDS USAGE OF FANS.

TO SUPPORT VARIOUS INSTALLATION SCENARIOS, A WIDE RANGE OF CABLE DIAMETERS ARE SUPPORTED. POWER 6393 IS PROTECTED FOR OVER VOLTAGE EXPOSURES AND IS POSSIBLE TO BE EQUIPPED WITH LIGHTNING PROTECTED MODULES.

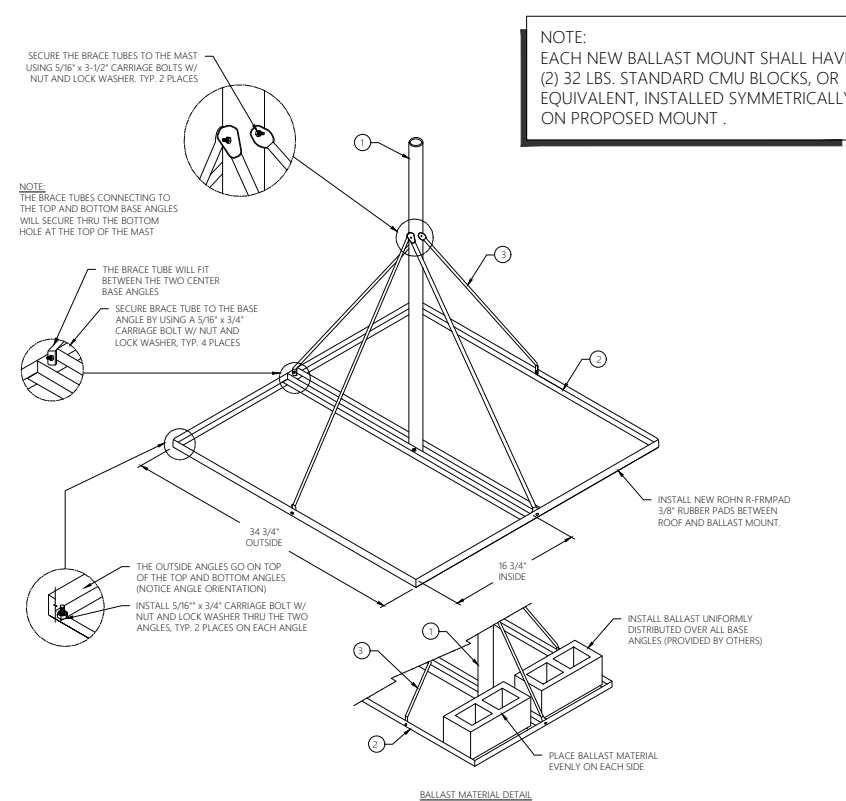
LED INDICATORS VISUALIZE THE POWER STATUS. OUTPUT POWER ON/OFF IS CONTROLLED BY PUSH BUTTONS.

Technical specification for Power 6393

INPUT VOLTAGE	Power 6393 AC Main Unit 100 - 250 VAC Power 6393 DC Main Unit -48 VDC
OUTPUT MODULES	PDU 40 01 1-port PoE injector with surge protection PDU 40 02 1-port PoE injector with lightning protection on PoE port PDU 40 03 2-port 55 VDC module with lightning protection
OUTPUT MODULE CAPACITY	Number of PDU slots 2
OUTPUT POWER	POWER 6393 total output power ≤200 W
PDU 40 01	IEEE 802.3at: ≤31 W or ERICSSON proprietary: ≤100 W
PDU 40 02	IEEE 802.3at: ≤31 W or ERICSSON proprietary: ≤100 W
PDU 40 03	Power ≤200 W (each port can handle all available power)
OUTPUT VOLTAGE	All modules 55 V
PROTECTION	Over Voltage Protection Yes Short Circuit Protection Yes (per module) Surge Protection Yes (all ports) Lightning Protection Yes (PDU 40 02 and PDU 40 03)
EMC	Conducted Emission CLASS B, EN 55022 Radiated Emission CLASS B, EN 55022
SUPERVISION	LED indicators Power, fault, warning
ETHERNET SUPPORT	Up to 10 m + 90 m cables Channel Link Class D according to ISO 11801
MECHANICAL	Dimensions 200 x 200 x 100 mm Weight 3 kg Placement Indoor, Outdoor Mounting Wall, Pole Water/dust protection IP66 (IEC 60529), Type 3 (UL 50E)

1 ERICSSON MINI-LINK 6651 RADIO DETAIL

SCALE: NTS
SCALE: NTS

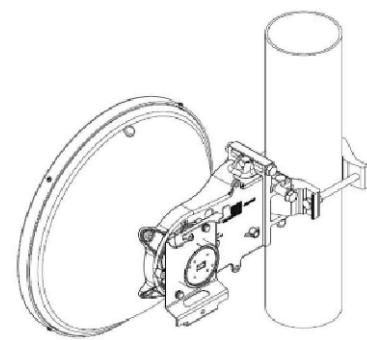


3 ROHN ROOFTOP BALLAST MOUNT DETAIL

SCALE: NTS
SCALE: NTS

2 ERICSSON POWER 6393 OVP DETAIL

SCALE: NTS
SCALE: NTS



ANT3 B 0.3 28 HP

BFZ62251/3S09H

0.3 M 28 GHz, HIGH PERFORMANCE, SINGLE POLARIZED ANTENNA.

INTEGRATED ANTENNA FOR MINI-LINK 6363.

THIS IS A COMPLETE MODULAR ANTENNA DELIVERED IN A SINGLE BOX CONTAINING BOTH THE ANTENNA MODULE AND THE INTERFACE MODULE. THE TWO MODULES ARE EASILY ASSEMBLED AT SITE. THE INTERFACE MODULE IS REPLACEABLE, ENABLING EASY FIELD UPGRADES. MAJOR BENEFITS INCLUDE:

- EASY UPGRADE FROM SINGLE POLARIZED TO DUAL POLARIZED
- NO ANTENNA RE-ALIGNMENT
- REDUCED TRAFFIC DISTURBANCE

4 ERICSSON MINI-LINK MICROWAVE ANTENNA DETAIL

Technical Specifications for ANT3 B 0.3 28 HP

MECHANICAL SPECIFICATIONS	Weight 5 kg Dimensions 387 mm (Product Height) 387 mm (Product Width) 220 mm (Product Depth) Mounting options Pole/Mast Volume 33 l
CERTIFICATIONS	Encapsulation class IP65
INTERFACES	Input connector 154 IEC-UR 260
ANTENNA	Antenna type HP Antenna diameter 0.3 m Antenna polarization Single polarization - Vertical or Horizontal
RADIO SPECIFICATIONS	Antenna frequency band 27500 MHz (Frequency Min) 29500 MHz (Frequency Max) Antenna gain 38.2 dB (Low Band Gain) 38.4 dB (Mid Band Gain) 38.8 dB (High Band Gain) Antenna half power beam width 2.2° Antenna cross polar discrimination (XPD) 30 dB Return loss, minimum 14 dB Minimum front to back ratio (F/R) 64 dB
RADIO SPECIFICATIONS	Frequency 27.5-29.5 GHz
ADDITIONAL INFORMATION	Frequency 28 GHz Integration interface ANT3

PRESENTED BY:

15660 MIDWEST RD. SUITE 140 OAKBROOK TERRACE, IL 60181

SITE NAME:
SAL EL MONTE

SITE ADDRESS:
1851 VALLEY DR.
OGDEN, UT 84404-6061

SITE COUNTY:
WEBER COUNTY

SITE ID:
5000232110

REVISIONS			
Rev.	Date:	Description:	By:
0	07.28.23	100% CONSTRUCTION	GW
1			
2			
3			
4			
5			
6			
7			

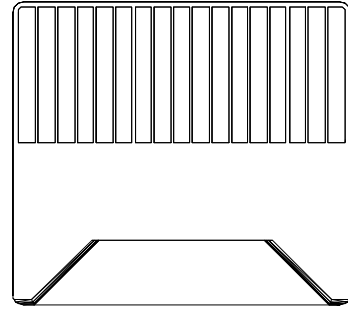
STAMPING SIGNATURE:

THIS WORK WAS PERFORMED BY ME OR UNDER MY SUPERVISION. CONSTRUCTION OF THIS PROJECT WAS OBSERVED. ALL SCALES AND DIMENSIONS ARE IN UNITS.

SHEET TITLE:
EQUIPMENT DETAILS

SHEET NUMBER:
T5.0

DRAWN BY: GW
CHK BY: CM
APV BY: CM



MINI-LINK 6363

MINI-LINK 6000
 WITH UNMATCHED FLEXIBILITY, MINI-LINK 6000 PROVIDES THE RIGHT SOLUTION FOR EACH PART OF THE NETWORK, ALL DEPLOYMENT SCENARIOS AND SITE TYPES, ENABLING SOUND INVESTMENTS IN LINE WITH THE SERVICE PROVIDERS' NEEDS. THE PORTFOLIO OFFERS BOTH SPLIT MOUNT AND ALL OUTDOOR SHORTRHAUL AS WELL AS LONG HAUL SOLUTIONS COVERING THE COMPLETE MICROWAVE SPECTRUM FROM 4 UP TO 80 GHz. MINI-LINK 6000 OFFERS ADVANCED PACKET FUNCTIONALITY INCLUDING ADVANCED SYNC AND L3 VPN, USING IP/MPLS, AS WELL AS L2. ALL NETWORK SCENARIOS ARE SUPPORTED WITH SUPERIOR PERFORMANCE COMBINED WITH THE LOWEST POSSIBLE COST OF OWNERSHIP.

ERICSSON IS THE MARKET LEADER IN MICROWAVE TRANSMISSION AND HAS OVER 40 YEARS OF MICROWAVE EXPERIENCE WITH MORE THAN 4.5 MILLION RADIO UNITS DELIVERED TO OVER 180 COUNTRIES.

HIGH CAPACITIES IN A COMPACT FORMAT

THE MINI LINK 6000, MINI-LINK TN AND MINI-LINK CN, IT CONNECTS TO THE NODE VIA A COAXIAL CABLE. IN A VERY IMPACT FORMAT, IT SUPPORTS GIGABIT CAPACITIES IN TRADITIONAL FREQUENCY BANDS AS WELL AS IN E-BAND. THE HIGH OUTPUT POWER CATERERS FOR THE NEED OF HIGH CAPACITIES AND HIGH AVAILABILITY, PROVIDING SUPERIOR NETWORK PERFORMANCE.

WORLD'S SMALLEST HIGH POWER RADIO

MINI-LINK 6363 BUILDS ON THE STRENGTHS FROM THE WORLD'S MOST WIDELY DEPLOYED MICROWAVE RADIO MINI-LINK RAU2 X. THE FOOTPRINT HAS BEEN REDUCED BY 65% AND WEIGHT BY 35% COMPARED TO RAU2 X. THIS ENABLES EASIER AND FASTER INSTALLATIONS AS WELL AS LESS WIND LOAD ON TOWERS.

TWO VERSIONS

MINI-LINK 6363 COMES IN TWO VERSIONS, MINI-LINK 6363, OPTIMIZED FOR HIGHEST SYSTEM GAIN, AND MINI-LINK 6363/2 OPTIMIZED FOR LOWEST POWER CONSUMPTION.

SUPERIOR OUTPUT POWER
 MINI-LINK 6363 HAS THE HIGHEST OUTPUT POWER IN THE SPLIT MOUNT RADIO MARKET, THAT IS MAINTAINED ALSO FOR HIGHER MODULATIONS. FOR 24-42 GHz THE OUTPUT POWER HAS BEEN INCREASED WITH UP TO 4 dB COMPARED TO RAU2 X. S' ALREADY HIGH SPECIFICATION. THIS MEANS MORE CAPACITY, HIGH AVAILABILITY AND SMALLER ANTENNAS. IN COMBINATION WITH FUNCTIONALITY IN THE MODE, A SUPERIOR SYSTEM GAIN IS OBTAINED. HIGH OUTPUT POWER IS AVAILABLE AS A SW LICENSE, WHICH MAKES IT POSSIBLE TO STEP UP IN MODULATION AND CAPACITY WHEN NEEDED, FOLLOWING A PAY AS YOU GROW APPROACH.

BEST IN CLASS DYNAMIC RANGE
 MINI-LINK 6363 HAS BEST IN CLASS DYNAMIC RANGE, WHICH IS CRUCIAL TO REDUCE INTERFERENCE (USING ATPC), REDUCE POWER CONSUMPTION AND BE ABLE TO INSTALL SHORT HOPS.

REDUCED POWER CONSUMPTION
 THE POWER CONSUMPTION IN MINI-LINK 6363 HAS BEEN REDUCED COMPARED TO RAU2 X, FOR 6-11 GHz BY UP TO 10 W. FOR MINI-LINK 6363/2 THE POWER CONSUMPTION HAS BEEN OPTIMIZED EVEN FURTHER, TYPICALLY BY AN ADDITIONAL 25% vs MINI-LINK 6363.

HIGH CAPACITIES IN TRADITIONAL FREQUENCY BANDS
 THE RADIO UNIT ALSO SUPPORTS 112 MHz WIDE CHANNELS AND A MODULATION OF 8K QAM (8192 QAM), WHICH PROVIDES CAPACITIES OVER 1 Gbps.

WORLD'S FIRST SPLIT MOUNT E-BAND RADIO
 MINI-LINK 6363 OFFERS A COST EFFICIENT ACCESS TO THE E-BAND SPECTRUM, WITH REUSE OF NODES AND COAXIAL CABLING. IT SUPPORTS BOTH TDM AND PACKET TRANSPORT. GIGABIT CAPACITY IS PROVIDED THROUGH 1024 QAM MODULATION SUPPORT. IT ENABLES MULTI-BAND BOOSTER IN SPLIT MOUNT CONFIGURATIONS, IN COMBINATIONS WITH A TRADITIONAL FREQUENCY BAND.

INCREASED INGRESS PROTECTION
 THE RADIO UNIT CAN BE INSTALLED IN VERY HARSH ENVIRONMENTS AS IT FULFILLS IP66 PROTECTION AGAINST DUST AND WATER.

BACKWARD COMPATIBILITY
 MINI-LINK 6363 IS HOP COMPATIBLE WITH THE MINI-LINK RAU2 X. IF A RADIO UNIT NEEDS TO BE UPGRADED, THE ANTENNA AND RADIO CABLE CAN BE REUSED.

ATEX CERTIFIED
 WITH ATEX CERTIFICATION MINI-LINK 6363 CAN BE USED IN POTENTIALLY EXPLOSIVE ATMOSPHERES (ZONE 2).

MODULAR ANTENNAS AND FLAT PANEL ANTENNAS
 MINI-LINK 6363 USES THE SAME ANTENNA PORTFOLIO AS MINI-LINK 6364 AND MINI-LINK 6365. THE 0.3-1.8m REFLECTOR ANTENNAS ARE MODULAR, MAKING THEM UPGRADEABLE FROM SINGLE TO DUAL POLARIZATION WITHOUT THE NEED FOR REALIGNMENT. THIS IS DONE BY REPLACING THE INTERFACE ONLY. WITH HIGH FOCUS ON VISUAL APPEARANCE AND MINIMIZED SIZE, ERICSSON HAS CREATED THE WORLD'S SMALLEST OUTDOOR UNIT (RADIO+ANTENNA) IN TRADITIONAL BANDS WITH A RANGE OF FLAT PANEL ANTENNAS. SINCE ANTENNA PERFORMANCE IS KEY TO SECURE NETWORK PERFORMANCE, THE FLAT PANEL ANTENNAS ARE GUARANTEED TO BE ETSI CLASS 3 COMPLIANT AND TYPICALLY CLOSE TO ETSI CLASS 4 COMPLIANCE.

Technical specification MINI-LINK 6363

Capacity	1.4 Gbps
Channels	7 - 112/125 MHz
Modulation	C-QPSK and 4 - 8k QAM
TX power	-10 to +30 dBm
Frequencies	6 - 42 and 80 GHz (MINI-LINK 6363) 13, 15, 18, 23 and 38 GHz (MINI-LINK 6363/2)
Weight	2.5 kg / 5.5 lbs
Dimensions (H x W x D)	179 x 197 x 79 mm (7.0 3.8 3.1 in) (75 4x3)
Power supply	+5V VDC
Power consumption	22 W (MINI-LINK 6363) 15 W (MINI-LINK 6363/2)
Reflector antennas	0.2 - 3.7 m / 9 in - 12 ft HP, HPR, SHP and SHPR
Flat panel antennas	0.1 m / 5 in SHP
Integrated configurations	1+0 to 4+0
Interfaces	Modem - Coaxial Antenna - Waveguide Alignment - 3.5 mm audio jack
Standards and recommendations	ETSI, ETC, FCC, IC, IEC, ITU, ATEX
Temperature range	-45 to +60 °C / -49 to +140 °F
Ingress protection	IP66
Nodes	MINI-LINK 6000 MINI-LINK TN MINI-LINK CN
Network management	ServiceOn Element Manager IP Transport MMS Ericsson Network Manager

1 ERICSSON MINI-LINK MW RADIO DETAIL

SCALE: NTS
SCALE: NTS

2 NOT USED

SCALE: NTS
SCALE: NTS

3 NOT USED

SCALE: NTS
SCALE: NTS

4 NOT USED

SCALE: NTS
SCALE: NTS

PRESENTED BY:



SITE NAME:

SAL EL MONTE

SITE ADDRESS:

1851 VALLEY DR.

OGDEN, UT 84404-6061

SITE COUNTY:

WEBER COUNTY

SITE ID:

5000232110

REVISIONS

Rev.	Date:	Description:	By:
0	07.28.23	100% CONSTRUCTION	GW
1			
2			
3			
4			
5			
6			
7			

STAMPING SIGNATURE:



SHEET TITLE:

EQUIPMENT DETAILS

SHEET NUMBER:

T5.1

DRAWN BY:	CHK BY:	APV BY:
GW	CM	CM