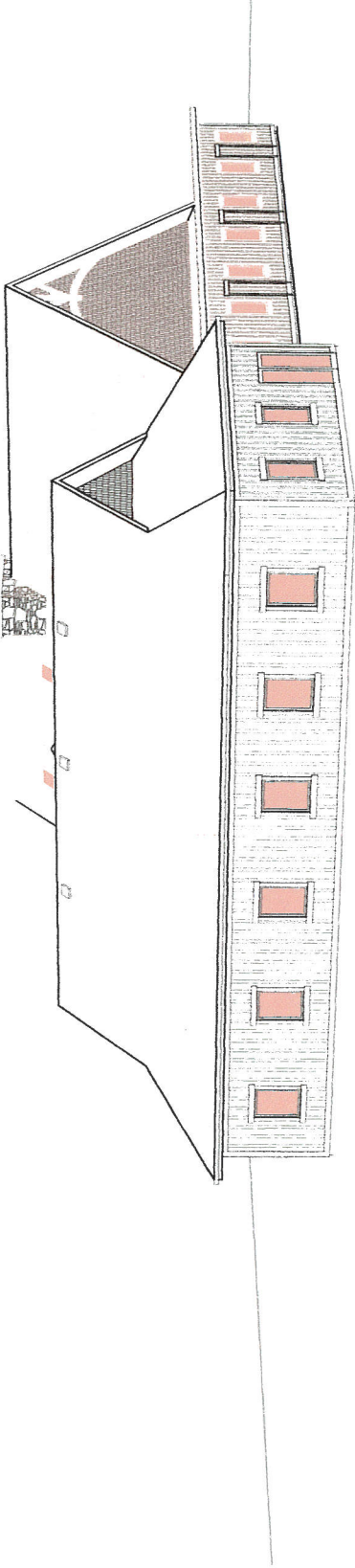


WAY POINT ACADEMY ADMINISTRATION ADDITION

9091 EAST 100 SOUTH WEBER COUNTY, UTAH



DRAWING INDEX

- | | |
|--|---|
| <ul style="list-style-type: none"> T0 CONCEPT T2 GENERAL NOTES A0 ARCHITECTURAL DRAWINGS A1 WORK PLAN A2 FLOOR PLAN A3 ELEVATIONS A4 ROOF PLAN A5 FOUNDATION PLAN A6 MECHANICAL PLAN A7 ELECTRICAL PLAN A8 MECHANICAL PLAN A9 MECHANICAL PLAN A10 MECHANICAL PLAN A11 MECHANICAL PLAN A12 MECHANICAL PLAN A13 MECHANICAL PLAN A14 MECHANICAL PLAN A15 MECHANICAL PLAN A16 MECHANICAL PLAN A17 MECHANICAL PLAN A18 MECHANICAL PLAN A19 MECHANICAL PLAN A20 MECHANICAL PLAN A21 MECHANICAL PLAN A22 MECHANICAL PLAN A23 MECHANICAL PLAN A24 MECHANICAL PLAN A25 MECHANICAL PLAN A26 MECHANICAL PLAN A27 MECHANICAL PLAN A28 MECHANICAL PLAN A29 MECHANICAL PLAN A30 MECHANICAL PLAN A31 MECHANICAL PLAN A32 MECHANICAL PLAN A33 MECHANICAL PLAN A34 MECHANICAL PLAN A35 MECHANICAL PLAN A36 MECHANICAL PLAN A37 MECHANICAL PLAN A38 MECHANICAL PLAN A39 MECHANICAL PLAN A40 MECHANICAL PLAN A41 MECHANICAL PLAN A42 MECHANICAL PLAN A43 MECHANICAL PLAN A44 MECHANICAL PLAN A45 MECHANICAL PLAN A46 MECHANICAL PLAN A47 MECHANICAL PLAN A48 MECHANICAL PLAN A49 MECHANICAL PLAN A50 MECHANICAL PLAN | <ul style="list-style-type: none"> M0 MECHANICAL DRAWINGS M1 MECHANICAL SCHEDULES AND DETAILS M2 MECHANICAL SCHEDULES AND DETAILS M3 MECHANICAL SCHEDULES AND DETAILS M4 MECHANICAL SCHEDULES AND DETAILS M5 MECHANICAL SCHEDULES AND DETAILS M6 MECHANICAL SCHEDULES AND DETAILS M7 MECHANICAL SCHEDULES AND DETAILS M8 MECHANICAL SCHEDULES AND DETAILS M9 MECHANICAL SCHEDULES AND DETAILS M10 MECHANICAL SCHEDULES AND DETAILS M11 MECHANICAL SCHEDULES AND DETAILS M12 MECHANICAL SCHEDULES AND DETAILS M13 MECHANICAL SCHEDULES AND DETAILS M14 MECHANICAL SCHEDULES AND DETAILS M15 MECHANICAL SCHEDULES AND DETAILS M16 MECHANICAL SCHEDULES AND DETAILS M17 MECHANICAL SCHEDULES AND DETAILS M18 MECHANICAL SCHEDULES AND DETAILS M19 MECHANICAL SCHEDULES AND DETAILS M20 MECHANICAL SCHEDULES AND DETAILS M21 MECHANICAL SCHEDULES AND DETAILS M22 MECHANICAL SCHEDULES AND DETAILS M23 MECHANICAL SCHEDULES AND DETAILS M24 MECHANICAL SCHEDULES AND DETAILS M25 MECHANICAL SCHEDULES AND DETAILS M26 MECHANICAL SCHEDULES AND DETAILS M27 MECHANICAL SCHEDULES AND DETAILS M28 MECHANICAL SCHEDULES AND DETAILS M29 MECHANICAL SCHEDULES AND DETAILS M30 MECHANICAL SCHEDULES AND DETAILS M31 MECHANICAL SCHEDULES AND DETAILS M32 MECHANICAL SCHEDULES AND DETAILS M33 MECHANICAL SCHEDULES AND DETAILS M34 MECHANICAL SCHEDULES AND DETAILS M35 MECHANICAL SCHEDULES AND DETAILS M36 MECHANICAL SCHEDULES AND DETAILS M37 MECHANICAL SCHEDULES AND DETAILS M38 MECHANICAL SCHEDULES AND DETAILS M39 MECHANICAL SCHEDULES AND DETAILS M40 MECHANICAL SCHEDULES AND DETAILS M41 MECHANICAL SCHEDULES AND DETAILS M42 MECHANICAL SCHEDULES AND DETAILS M43 MECHANICAL SCHEDULES AND DETAILS M44 MECHANICAL SCHEDULES AND DETAILS M45 MECHANICAL SCHEDULES AND DETAILS M46 MECHANICAL SCHEDULES AND DETAILS M47 MECHANICAL SCHEDULES AND DETAILS M48 MECHANICAL SCHEDULES AND DETAILS M49 MECHANICAL SCHEDULES AND DETAILS M50 MECHANICAL SCHEDULES AND DETAILS |
|--|---|

CODE SUMMARY

- CHAPTER 1: USE AND OCCUPANCY CLASSIFICATION
 CHAPTER 2: GENERAL REGULATIONS
 CHAPTER 3: BUILDING AREA
 CHAPTER 4: MECHANICAL SYSTEMS
 CHAPTER 5: MECHANICAL SYSTEMS
 CHAPTER 6: MECHANICAL SYSTEMS
 CHAPTER 7: MECHANICAL SYSTEMS
 CHAPTER 8: MECHANICAL SYSTEMS
 CHAPTER 9: MECHANICAL SYSTEMS
 CHAPTER 10: MECHANICAL SYSTEMS
 CHAPTER 11: MECHANICAL SYSTEMS
 CHAPTER 12: MECHANICAL SYSTEMS
 CHAPTER 13: MECHANICAL SYSTEMS
 CHAPTER 14: MECHANICAL SYSTEMS
 CHAPTER 15: MECHANICAL SYSTEMS
 CHAPTER 16: MECHANICAL SYSTEMS
 CHAPTER 17: MECHANICAL SYSTEMS
 CHAPTER 18: MECHANICAL SYSTEMS
 CHAPTER 19: MECHANICAL SYSTEMS
 CHAPTER 20: MECHANICAL SYSTEMS
 CHAPTER 21: MECHANICAL SYSTEMS
 CHAPTER 22: MECHANICAL SYSTEMS
 CHAPTER 23: MECHANICAL SYSTEMS
 CHAPTER 24: MECHANICAL SYSTEMS
 CHAPTER 25: MECHANICAL SYSTEMS
 CHAPTER 26: MECHANICAL SYSTEMS
 CHAPTER 27: MECHANICAL SYSTEMS
 CHAPTER 28: MECHANICAL SYSTEMS
 CHAPTER 29: MECHANICAL SYSTEMS
 CHAPTER 30: MECHANICAL SYSTEMS
 CHAPTER 31: MECHANICAL SYSTEMS
 CHAPTER 32: MECHANICAL SYSTEMS
 CHAPTER 33: MECHANICAL SYSTEMS
 CHAPTER 34: MECHANICAL SYSTEMS
 CHAPTER 35: MECHANICAL SYSTEMS
 CHAPTER 36: MECHANICAL SYSTEMS
 CHAPTER 37: MECHANICAL SYSTEMS
 CHAPTER 38: MECHANICAL SYSTEMS
 CHAPTER 39: MECHANICAL SYSTEMS
 CHAPTER 40: MECHANICAL SYSTEMS
 CHAPTER 41: MECHANICAL SYSTEMS
 CHAPTER 42: MECHANICAL SYSTEMS
 CHAPTER 43: MECHANICAL SYSTEMS
 CHAPTER 44: MECHANICAL SYSTEMS
 CHAPTER 45: MECHANICAL SYSTEMS
 CHAPTER 46: MECHANICAL SYSTEMS
 CHAPTER 47: MECHANICAL SYSTEMS
 CHAPTER 48: MECHANICAL SYSTEMS
 CHAPTER 49: MECHANICAL SYSTEMS
 CHAPTER 50: MECHANICAL SYSTEMS

PROJECT DIRECTORY

- OWNER**
 WAY POINT ACADEMY
 1000 SUNSET DR
 KAYVILLE, UT 84037
 801-638-7702
- ARCHITECT**
 RW ARCHITECTURE
 1000 SUNSET DR
 KAYVILLE, UT 84037
 801-638-7702
- Mechanical Engineer**
 REEVE AND ASSOCIATES
 801-638-7702
- Structural Engineer**
 REEVE AND ASSOCIATES
 801-638-7702
- Electrical Engineer**
 REEVE AND ASSOCIATES
 801-638-7702
- Plumbing Engineer**
 REEVE AND ASSOCIATES
 801-638-7702
- Fire Protection Engineer**
 REEVE AND ASSOCIATES
 801-638-7702
- Energy Auditor**
 REEVE AND ASSOCIATES
 801-638-7702
- LEED Accredited Professional**
 REEVE AND ASSOCIATES
 801-638-7702

PROJECT INFORMATION

PROJECT # 14019
PROJECT DATE OF APRIL 14, 2014
 THESE DRAWINGS ARE PART OF A SET OF CONSTRUCTION DOCUMENTS. THE CONTRACTOR SHALL VERIFY THE ACCURACY OF ALL DIMENSIONS AND CONDITIONS PRIOR TO CONSTRUCTION. THE CONTRACTOR SHALL BE RESPONSIBLE FOR OBTAINING ALL NECESSARY PERMITS AND APPROVALS PRIOR TO CONSTRUCTION. THE CONTRACTOR SHALL BE RESPONSIBLE FOR OBTAINING ALL NECESSARY PERMITS AND APPROVALS PRIOR TO CONSTRUCTION. THE CONTRACTOR SHALL BE RESPONSIBLE FOR OBTAINING ALL NECESSARY PERMITS AND APPROVALS PRIOR TO CONSTRUCTION.

REVISIONS:
ISSUE DATE:
 FEBRUARY 24, 2014
PROJECT NUMBER:
 14019

DESIGN CRITERIA

- APPLICABLE CODES:**
 2012 INTERNATIONAL BUILDING CODE (IBC)
 2012 INTERNATIONAL MECHANICAL CODE
 2012 INTERNATIONAL PLUMBING CODE
 2012 INTERNATIONAL FIRE CODE
 2012 INTERNATIONAL ELECTRICAL CODE
 ASSESSMENT
 (S.E.A. 101) - 1019



PROJECT NUMBER
14019

ISSUE DATE:
FEBRUARY 24, 2014

REVISIONS:
No. DATE

WAY POINT ACADEMY
ADMINISTRATION ADDITION
9091 EAST 100 SOUTH
WEBER COUNTY, UTAH

MAIN FLOOR PLAN

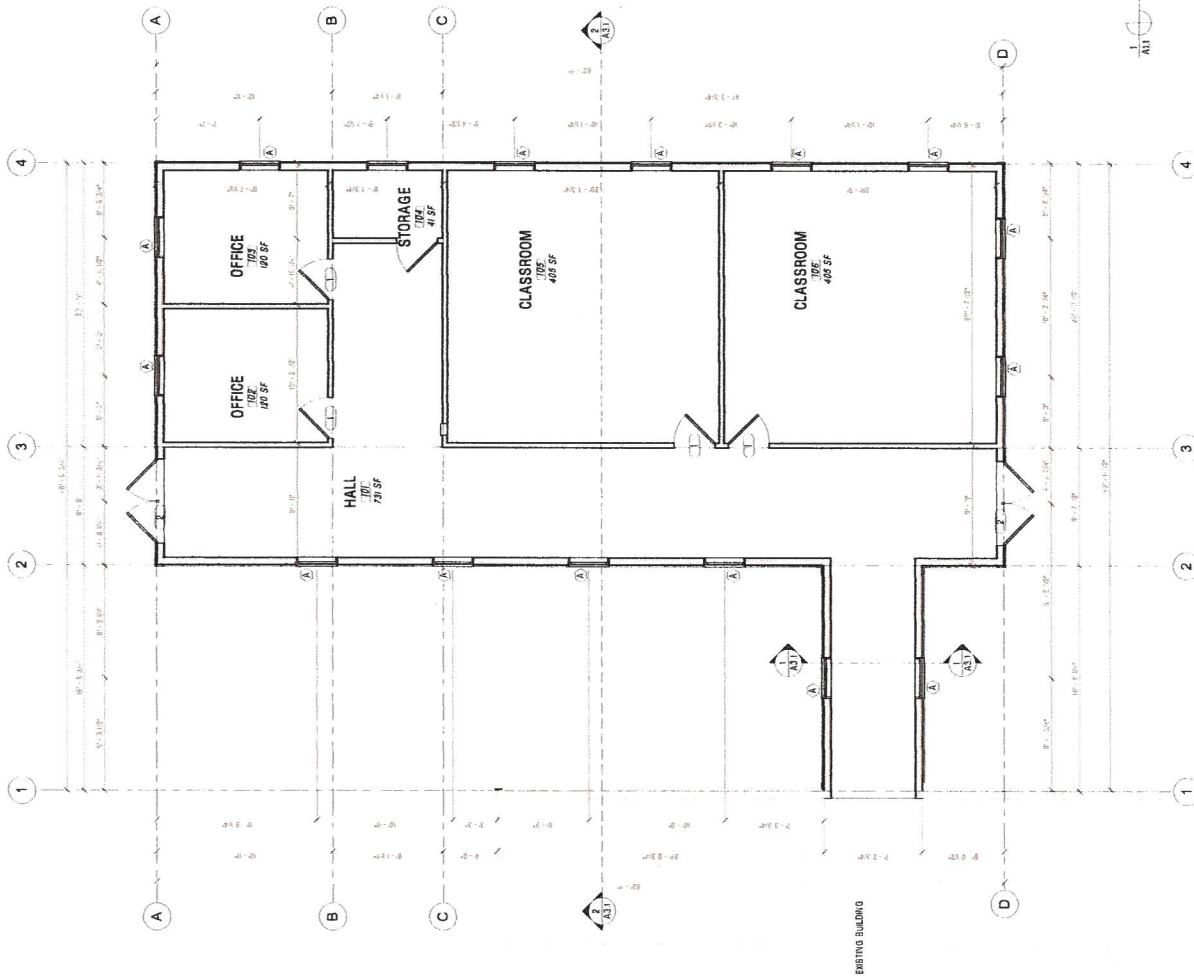
A1.1



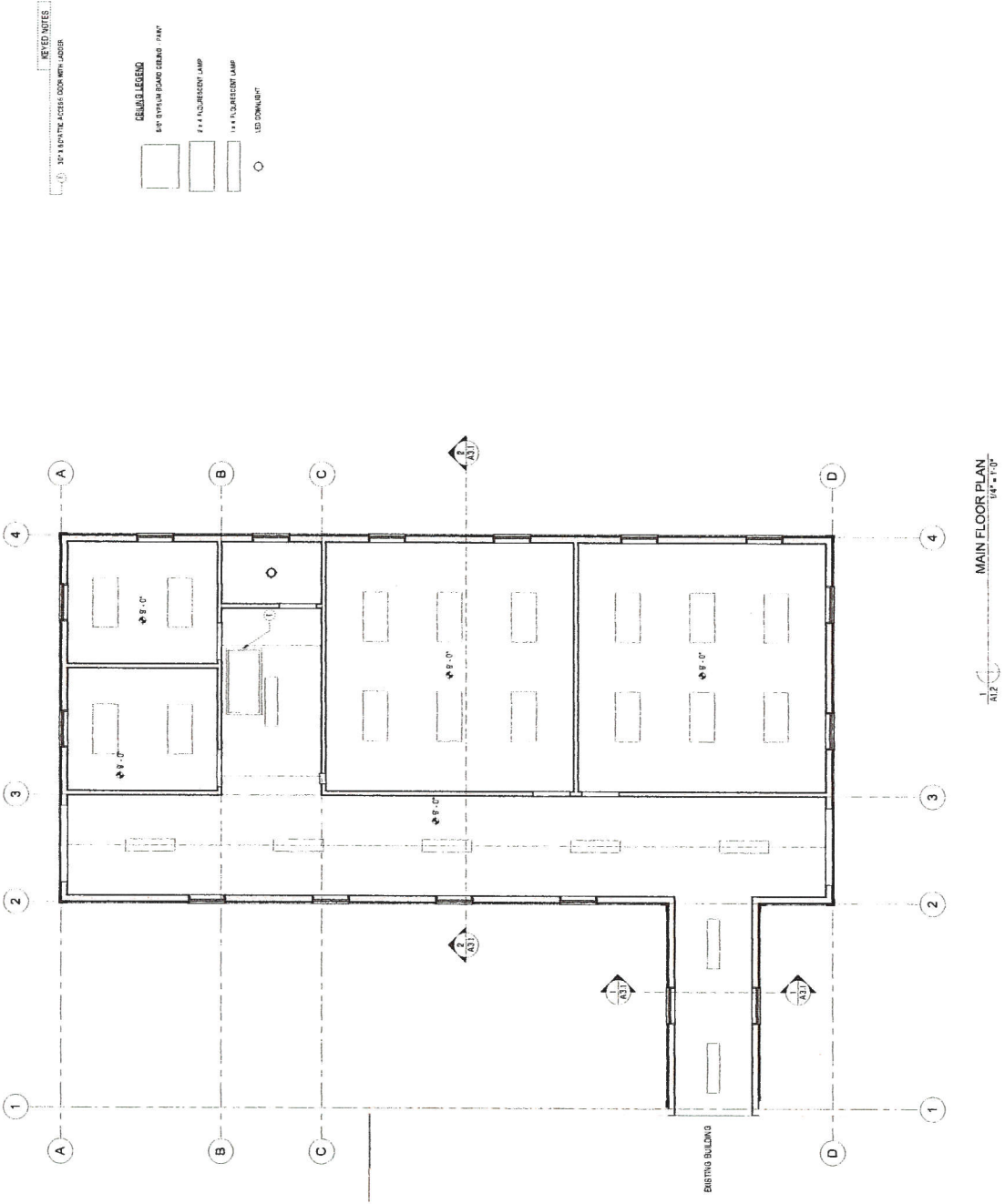
GENERAL NOTES

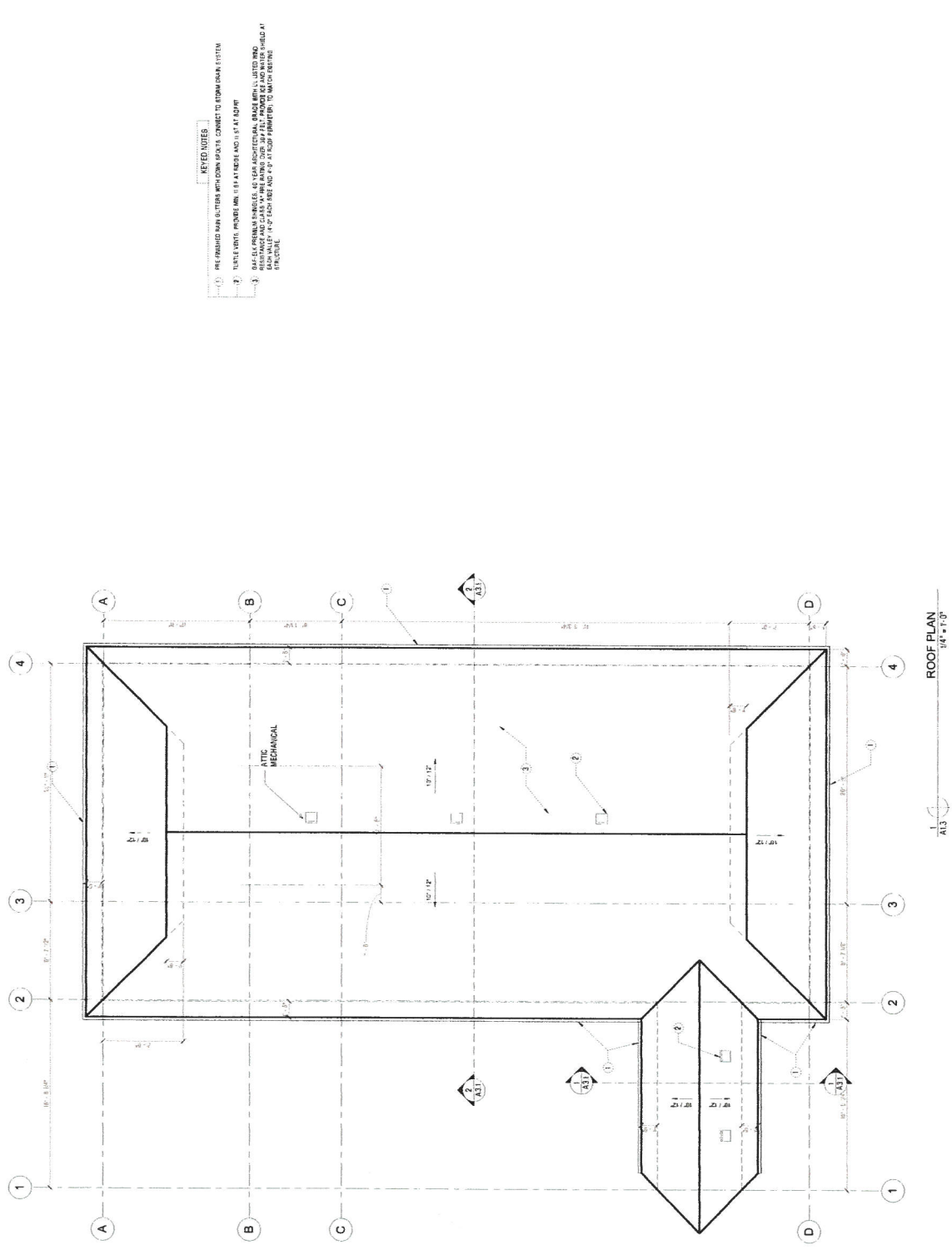
- 1. SEE GENERAL NOTES ON SHEET 1.1 FOR ADDITIONAL REQUIREMENTS.
- 2. DIMENSIONS TO CORNER AND WINDOW ARE TO CENTER OF FINISHED OPENING UNLESS NOTED OTHERWISE.
- 3. SEE STRUCTURAL DRAWINGS AND CALCULATIONS FOR ALL STRUCTURAL REQUIREMENTS, INCLUDING FOUNDATION WALL EXTERIOR AND INTERIOR AND JOIST/CEILING REQUIREMENTS.
- 4. PROVIDE SOUND BATT INSULATION IN ALL WALLS.
- 5. CORNER/ATE ALL WINDOW HEADS/PIES AND SIZES WITH ELEVATION AND WINDOW SCHEDULE.

- WALL TYPE SCHEDULE
- EXTERIOR WALL - 2" C. INSULATION TO WALL SECTION AND 5/8" GYP. FINISH
 - INTERIOR WALL - 2" C. INSULATION TO WALL SECTION AND 5/8" GYP. FINISH



ADDITION FLOOR PLAN
1/4" = 1'-0"





- KEYED NOTES**
1. PRE-FRAMED RAFTERS WITH DOWN PITCH, CONNECT TO STORM DRAIN SYSTEM
 2. TRUSSE NOTE: PROVIDE MIN. 10" x 4" MEMBERS @ 12' ON CENTER
 3. ALL CEILING PANELS SHALL BE 5/8" ARCHITECTURAL GRADE Gypsum BOARD, UNLESS OTHERWISE NOTED. PROVIDE 1/2" GYPSUM BOARD IN ALL VALLEYS AND AT ROOF PARALLEL TO MATCH EXISTING STRUCTURE.

ROOF PLAN
1/4" = 1'-0"

PROJECT NUMBER
14019

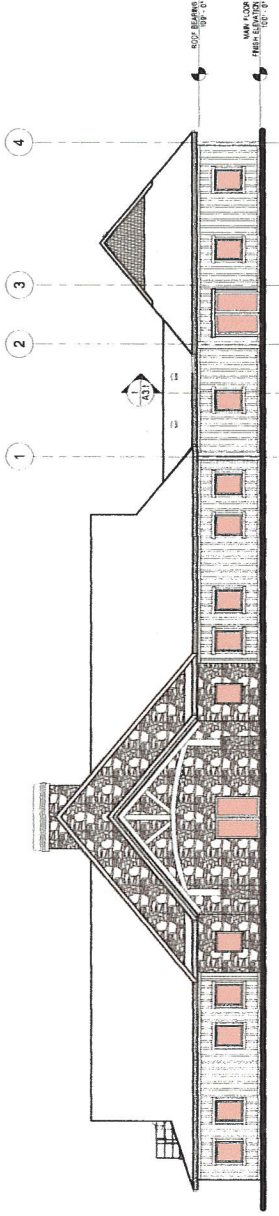
ISSUE DATE:
FEBRUARY 24, 2014

REVISIONS:
No. Date

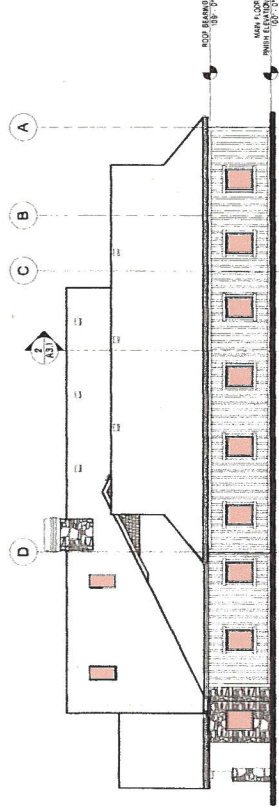
WAY POINT ACADEMY
ADMINISTRATION ADDITION
9091 EAST 100 SOUTH WEBER
COUNTY, UTAH

ELEVATIONS

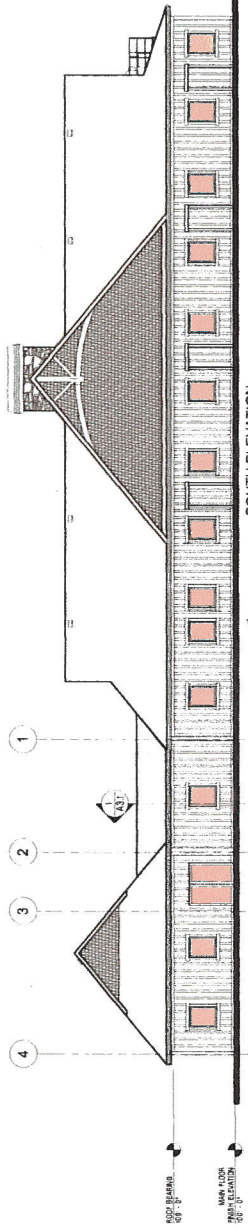
A2.1



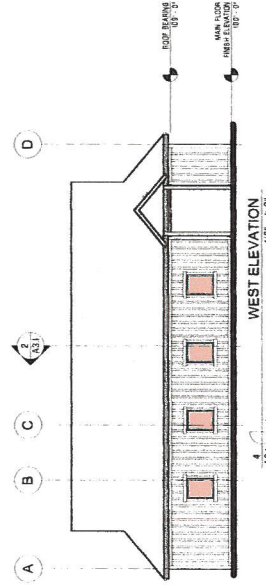
NORTH ELEVATION
1/8" = 1'-0"



EAST ELEVATION
1/8" = 1'-0"

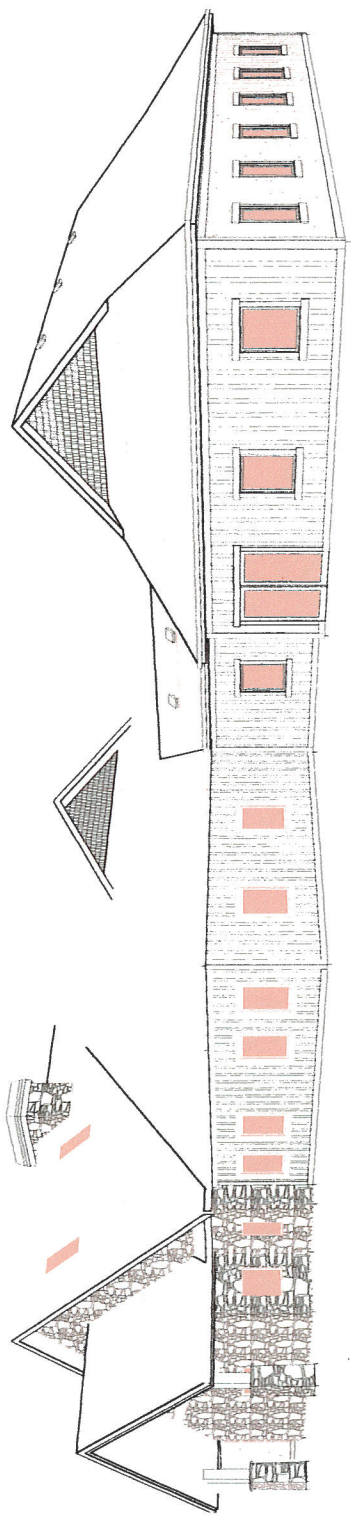


SOUTH ELEVATION
1/8" = 1'-0"

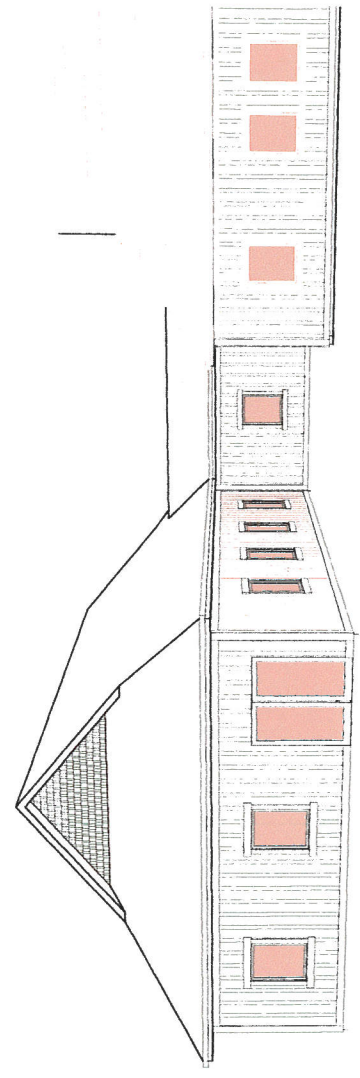


WEST ELEVATION
1/8" = 1'-0"

JZ ARCHITECTS
1000 EAST 100 SOUTH WEBER COUNTY, UTAH
Copyright © 2014 JZ Architects. This document is prepared as a professional service and is not to be reproduced, stored in a retrieval system, or transmitted in any form or by any means, electronic, mechanical, photocopying, recording, or by any information storage and retrieval system, without the prior written permission of JZ Architects.



1
A2.2
PERSPECTIVE



2
A2.2
PERSPECTIVE

PROJECT NUMBER
14019

ISSUE DATE:
FEBRUARY 24, 2014

REVISIONS:
No. _____ Date _____

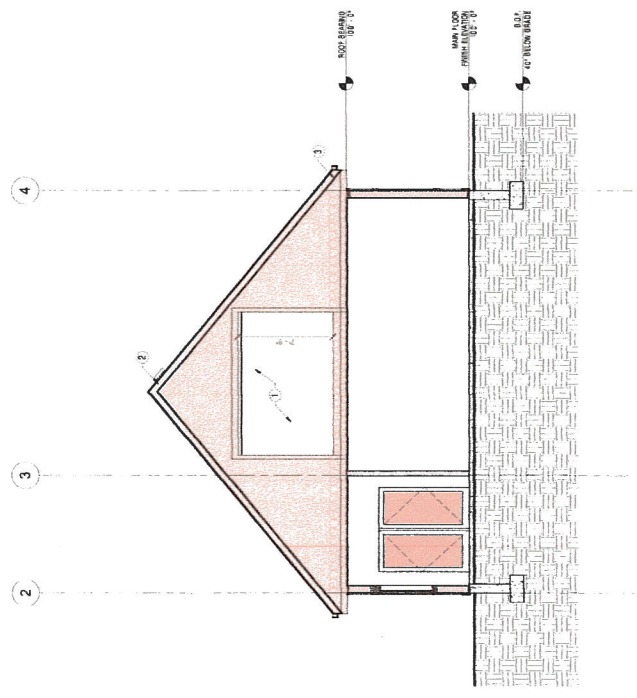
**WAY POINT ACADEMY
ADMINISTRATION ADDITION
9091 EAST 100 SOUTH
WEBER COUNTY, UTAH**

BUILDING
SECTION

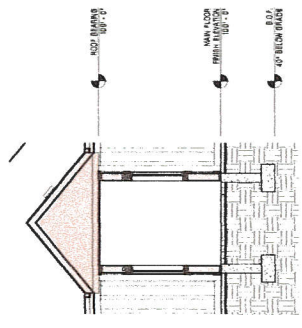
A3.1

- GENERAL NOTES**
1. SEE GENERAL NOTES ON SHEET T-1 FOR ADDITIONAL REQUIREMENTS.
 2. REVIEW ALL STRUCTURAL PLANS AND SPECIFICATIONS AS WELL AS STRUCTURAL CALCULATIONS FOR ALL STRUCTURAL REQUIREMENTS.
 3. REFER TO ELEVATION CHAMBERS FOR ALL LETTERS INDICATED.
 4. ALL ROOMS, WORK CLOSETS, BUILDING PAPER, ETC., AS INDICATED IN GENERAL NOTES.
 5. ALL LETTERS INDICATED TO BE AS LOCATED IN ELEVATION CHAMBERS.

- REVISED NOTES**
1. MECHANICAL, PLUMBING & ELECTRICAL.
 2. UNLESS OTHERWISE NOTED, ALL MATERIALS SHALL BE AS SHOWN ON THE DRAWINGS.
 3. ALL FINISHED FLOOR SURFACES SHALL BE AS SHOWN ON THE DRAWINGS.
 4. ALL FINISHED FLOOR SURFACES SHALL BE AS SHOWN ON THE DRAWINGS.



ADDITION SECTION
1/4" = 1'-0"



ADDITION HALL SECTION
1/4" = 1'-0"



PROJECT NUMBER
14019

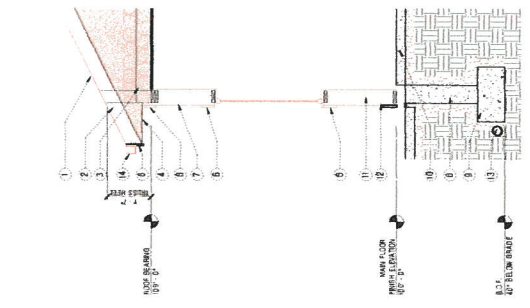
ISSUE DATE:
FEBRUARY 24, 2014

REVISIONS:
No. Date

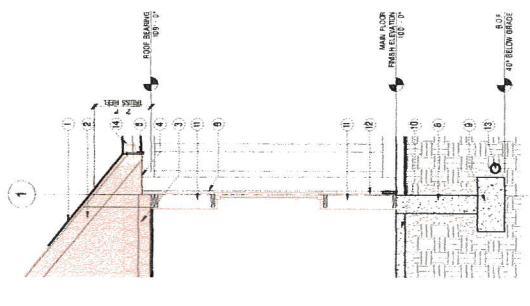
**WAY POINT ACADEMY
ADMINISTRATION ADDITION
9091 EAST 100 SOUTH
WEBER
COUNTY, UTAH**

WALL SECTION

A3.2



**WALL SECTION
1/2" = 1'-0"**



**WALL SECTION
1/2" = 1'-0"**

- REFER NOTES:**
1. ASPHALT FINISHER - REFER TO FLOOR PLAN
 2. 2" x 4" FINISHER - REFER TO FINISHER
 3. 1/2" GYPSUM BOARD
 4. 1/2" GYPSUM BOARD
 5. 1/2" GYPSUM BOARD
 6. 1/2" GYPSUM BOARD
 7. 1/2" GYPSUM BOARD
 8. 1/2" GYPSUM BOARD
 9. 1/2" GYPSUM BOARD
 10. 1/2" GYPSUM BOARD
 11. 1/2" GYPSUM BOARD
 12. 1/2" GYPSUM BOARD
 13. 1/2" GYPSUM BOARD
- GENERAL NOTES:**
1. SEE GENERAL NOTES ON SHEET 13 FOR ADDITIONAL REQUIREMENTS.
 2. REVIEW ALL STRUCTURAL PLANS AND SPECIFICATIONS AS WELL AS STRUCTURAL CALCULATIONS FOR ALL STRUCTURAL REQUIREMENTS.
 3. REFER TO ELEVATION DRAWINGS FOR ALL ELEVATION FINISHES.
 4. ALL FINISHES AND COATS TO BE AS INDICATED IN FLOOR PLANS, ELEVATIONS AND ELEVATION DRAWINGS.
 5. ALL FINISHED WORK SHALL BE SUBJECT TO INSPECTION AND APPROVAL BY THE ARCHITECT.
 6. ALL ELEVATION FINISHES TO BE AS INDICATED IN ELEVATION DRAWINGS.

- REFER NOTES:**
1. ASPHALT FINISHER - REFER TO FLOOR PLAN
 2. 2" x 4" FINISHER - REFER TO FINISHER
 3. 1/2" GYPSUM BOARD
 4. 1/2" GYPSUM BOARD
 5. 1/2" GYPSUM BOARD
 6. 1/2" GYPSUM BOARD
 7. 1/2" GYPSUM BOARD
 8. 1/2" GYPSUM BOARD
 9. 1/2" GYPSUM BOARD
 10. 1/2" GYPSUM BOARD
 11. 1/2" GYPSUM BOARD
 12. 1/2" GYPSUM BOARD
 13. 1/2" GYPSUM BOARD
- GENERAL NOTES:**
1. SEE GENERAL NOTES ON SHEET 13 FOR ADDITIONAL REQUIREMENTS.
 2. REVIEW ALL STRUCTURAL PLANS AND SPECIFICATIONS AS WELL AS STRUCTURAL CALCULATIONS FOR ALL STRUCTURAL REQUIREMENTS.
 3. REFER TO ELEVATION DRAWINGS FOR ALL ELEVATION FINISHES.
 4. ALL FINISHES AND COATS TO BE AS INDICATED IN FLOOR PLANS, ELEVATIONS AND ELEVATION DRAWINGS.
 5. ALL FINISHED WORK SHALL BE SUBJECT TO INSPECTION AND APPROVAL BY THE ARCHITECT.
 6. ALL ELEVATION FINISHES TO BE AS INDICATED IN ELEVATION DRAWINGS.

PROJECT NUMBER
14019

ISSUE DATE:
FEBRUARY 24, 2014

REVISIONS:
No. Date

WAY POINT ACADEMY
ADMINISTRATION ADDITION
9091 EAST 100 SOUTH
WEBER COUNTY, UTAH

ROOM, DOOR, AND
WINDOW
SCHEDULES

A4.1



DOOR SCHEDULE

DOOR #	DOOR SIZE	TYPE	THICKNESS	DOOR FINISH	FRAME FINISH	REMARKS
1	1'-0" x 6'-8"	WOOD	1-1/2"	FAVOR	WOOD	1-1/2"
2	1'-0" x 6'-8"	WOOD GLAZE SASH	1-1/2"	FACTORY STAIN	WOOD	1-1/2"
3	1'-0" x 6'-8"	WOOD	1-1/2"	PLAIN	WOOD	1-1/2"

WINDOW SCHEDULE

WINDOW	WIDTH	HEIGHT	TYPE	HEAD HEIGHT	REMARKS
1	3'-0"	4'-0"	WOOD	8'-0"	

§ = SAFETY GLAZING

ROOM SCHEDULE

ROOM #	ROOM NAME	FLOOR	WALLS	BASE	CEILING	NOTES
001	CLASSROOM	CONCRETE	1'-1/2" GYP BD	WOOD STAIR BUSH	1'-1/2" GYP BD	
002	OFFICE	CONCRETE	1'-1/2" GYP BD	WOOD STAIR BUSH	1'-1/2" GYP BD	
003	OFFICE	CONCRETE	1'-1/2" GYP BD	WOOD STAIR BUSH	1'-1/2" GYP BD	
004	CLASSROOM	CONCRETE	1'-1/2" GYP BD	WOOD STAIR BUSH	1'-1/2" GYP BD	
005	CLASSROOM	CONCRETE	1'-1/2" GYP BD	WOOD STAIR BUSH	1'-1/2" GYP BD	

