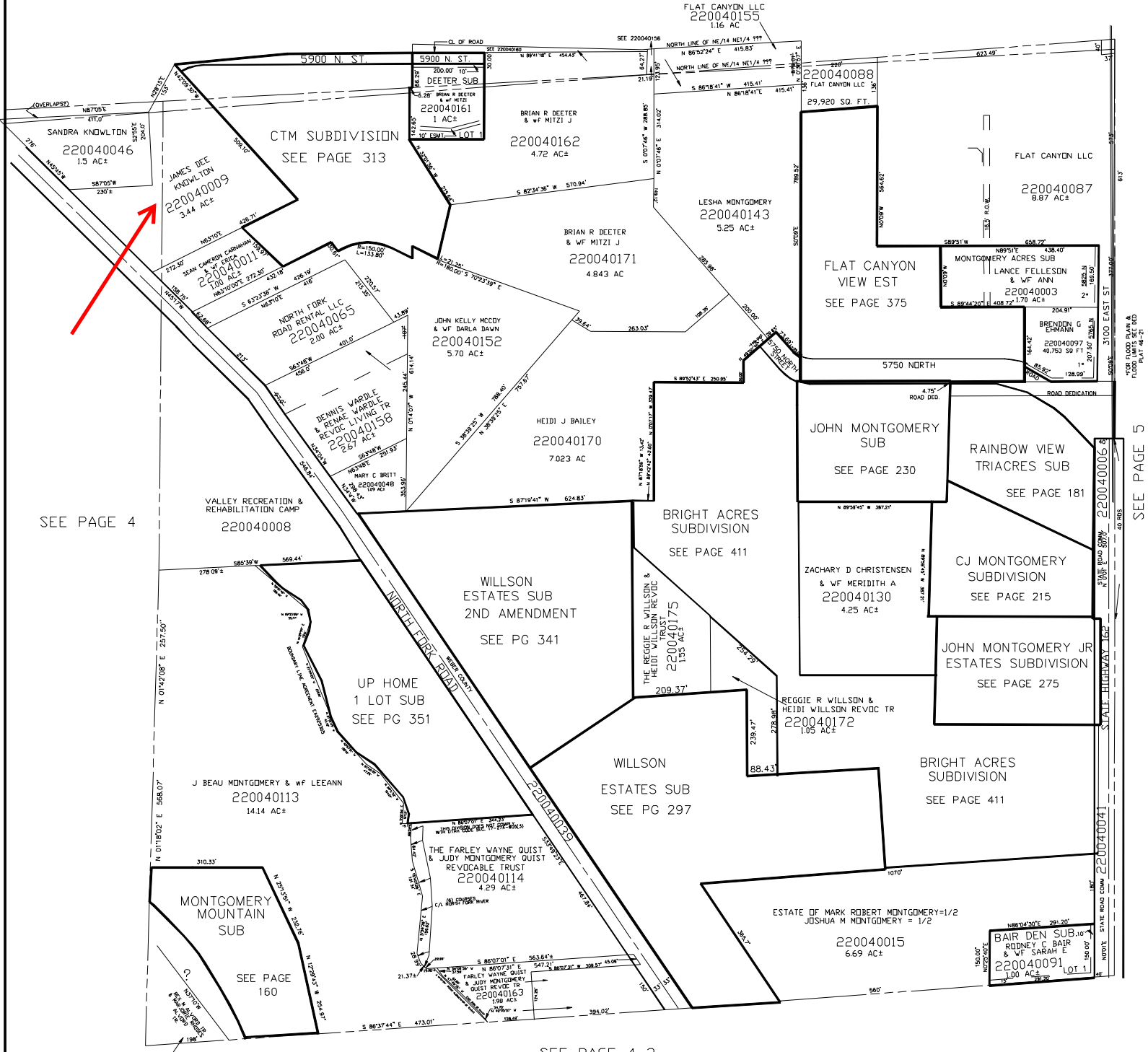


N.E. 1/4
SECTION 7, T.7N., R.1E., S.L.B. & M.
IN WEBER COUNTY
SCALE 1" = 200'

TAXING UNIT: 36

SEE PAGE 3



SEE PAGE 4

SEE PAGE 5

SEE PAGE 4-2

FOR TAX PURPOSES ONLY

MTT 08-96