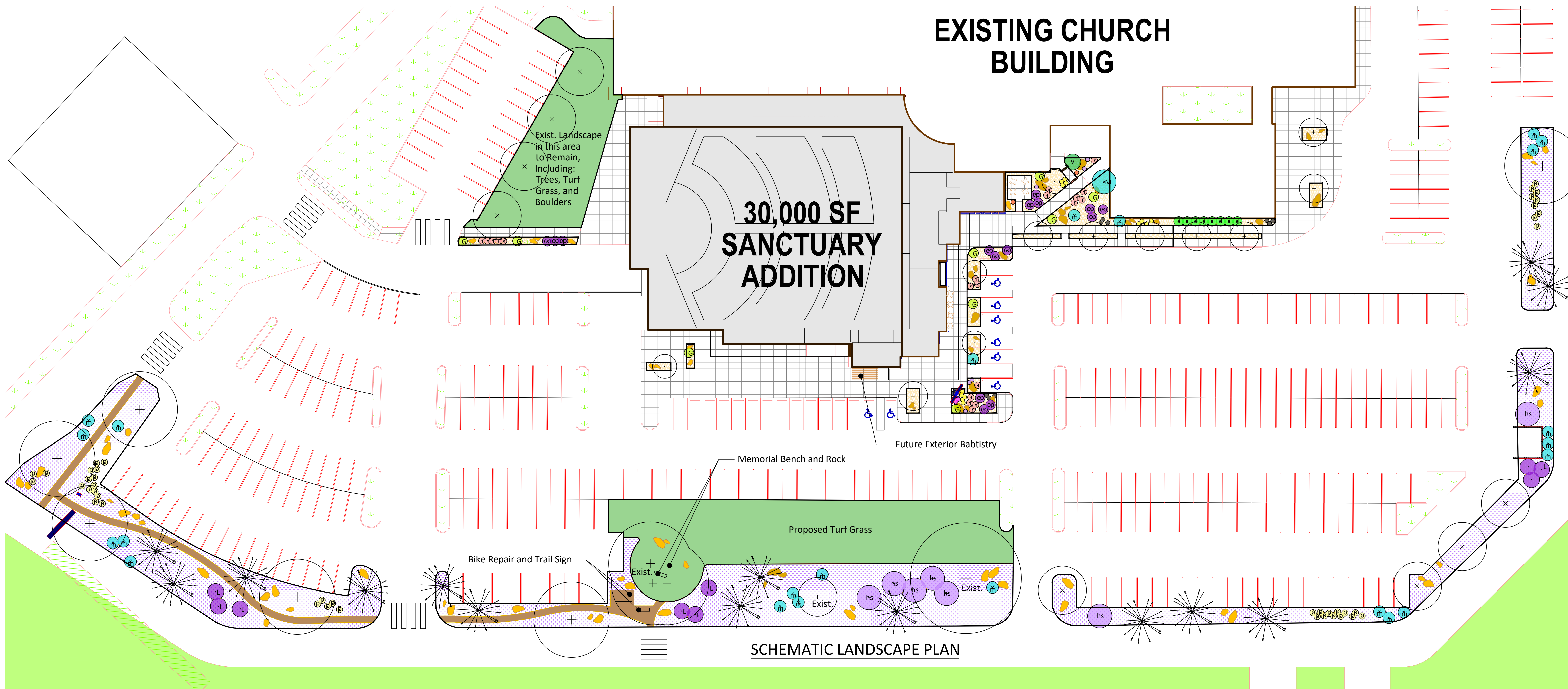


# EXISTING CHURCH BUILDING



## PLANTING LEGEND

### TREES

SYMBOL	BOTANICAL NAME	COMMON NAME	SIZE	QTY. +/-	TYPE	REMARKS
	<i>Crataegus x lavallei</i>	Lavalle Hawthorne	2" Cal.	8	Deciduous	Waterwise
	<i>Gleditsia triacanthos inermis</i>	Honeylocust	2" Cal.	4	Deciduous	Waterwise
	<i>Malus sp. 'Spring Snow'</i>	'Spring Snow' Crabapple	2" Cal.	4	Deciduous	Waterwise
	<i>Pinus ponderosa</i>	Ponderosa Pine	6'	15	Evergreen	Waterwise
	<i>Populus deltoides</i>	Cottonless Cottonwood	2" Cal.	6	Deciduous	Waterwise

### SHRUBS/PERENNIALS

SYMBOL	BOTANICAL NAME	COMMON NAME	SIZE	QTY. +/-	TYPE	REMARKS
	<i>Cornus sericea</i>	Red Twig Dogwood	5 Gal.	8	Deciduous	Waterwise
	Perennials	(Various)	3 Gal.	32	Perennial	Waterwise
	<i>Lonicera japonica 'Purpurea'</i>	Honeysuckle	5 Gal.	7	Deciduous	Waterwise
	<i>Miscanthus sinensis 'Gracillimus'</i>	Maiden Grass	5 Gal.	9	Grass	Waterwise
	<i>Pinus mugo 'Pumilio'</i>	Dwarf Mugo Pine	5 Gal.	23	Evergreen	Waterwise
	<i>Pinus mugo 'Tannenbaum'</i>	Mugo Pine	5 Gal.	1	Evergreen	Waterwise
	<i>Potentilla fruticosa 'Goldfinger'</i>	Potentilla	5 Gal.	39	Deciduous	Waterwise
	<i>Prunus x cistena</i>	Cistena Plum	5 Gal.	15	Deciduous	Waterwise
	<i>Rosa 'WEKPhorn' Pink Home Run</i>	Pink Shrub Rose	5 Gal.	20	Deciduous	Waterwise
	<i>Syringa vulgaris</i>	Lilac	5 Gal.	9	Deciduous	Waterwise
	<i>Viburnum x Rhytidophylloides</i>	Leatherleaf Viburnum	5 Gal.	1	Deciduous	Waterwise

### MISCELLANEOUS

	3" depth min. 2" to 4" River Rock Mulch
	Great Basin Wildflower Blend
	Gravel Trail
	Ryerson Steel Edging - see specifications
	Boulders

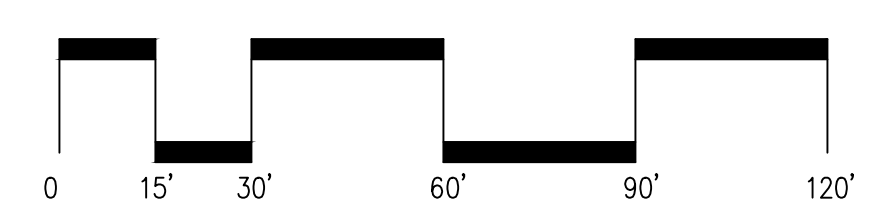
At Washington Heights Church, the existing landscape is very beautiful and inviting. Upon analysis, it appears that the appeal comes from several factors, including: the location at the top of Washington Boulevard, the open expansiveness of the site, the beautiful architecture and outdoor spaces, the natural connection of the site with the surrounding nature, the generous use of boulders in the landscape, and of course, the very uplifting nature of a devoted church.

In designing the landscape for the addition, strong focus is given to keeping with these themes, and working to promote them further if possible. Specifically it entails:

1. Continuing the use of large boulders throughout the landscape. These boulders set a very powerful theme, and are conducive to a spiritual institution.
2. Bringing in a lot of flowering plants, for their beauty and aromatic features. Flowers are also always conducive to, and welcome at spiritual institutions.
3. Use of seed mixes. Weber County Zoning requirements only allow a maximum of 50% turf grass. This has been maximized in the design, and a wildflower seed mix has been utilized to provide a rich landscape for expansive outlying areas where drip irrigation would not be practical.
4. Evergreens have been carefully incorporated to provide year-round appeal in the landscape.
5. For the inner pedestrian areas, close to the buildings, a decorative gravel base has been incorporated, to match the existing, and to utilize drip irrigation. The plants in these areas have been chosen, again, for their flowering and other interesting features, such as the Leatherleaf Viburnum with its unique leaf texture, Hawthorne trees with their dichotomy of thorns and flowers, evergreens with their year round constancy, and perennials with their exuberant beauty.



## SCALE



REV#	DATE	DESCRIPTION

Design by: Jeff Scarborough, RLA