

ANSEMI ACRES SUBDIVISION PHASE 1

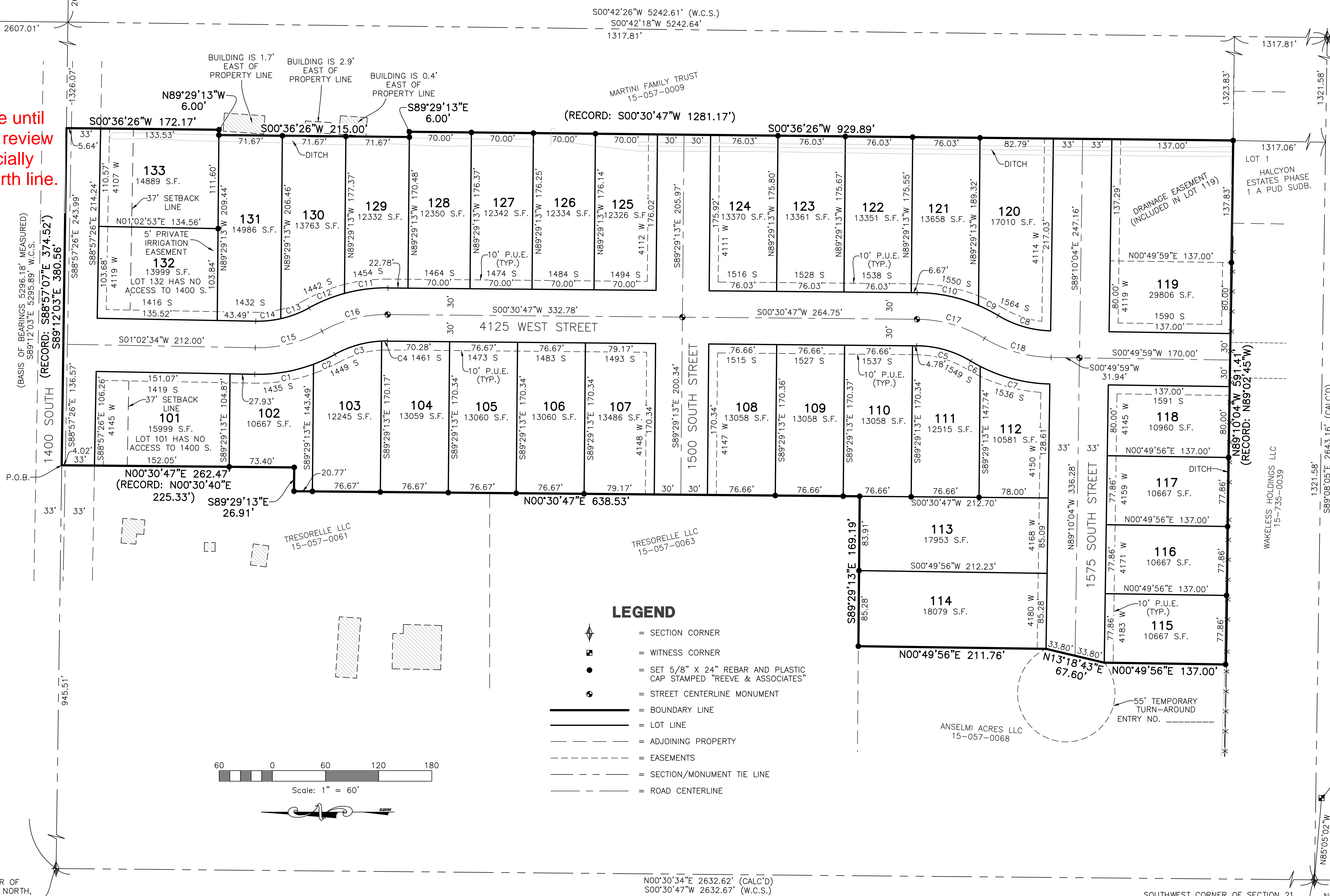
PART OF THE SOUTHWEST QUARTER OF SECTION 21, TOWNSHIP 6 NORTH, RANGE 2 WEST, SALT LAKE BASE & MERIDIAN, U.S. SURVEY
WEBER COUNTY, UTAH
JULY, 2023

EAST QUARTER CORNER OF SECTION 21, TOWNSHIP 6 NORTH, RANGE 2 WEST, SALT LAKE BASE AND MERIDIAN, U.S. SURVEY (FOUND BRASS CAP MONUMENT 0.55' UNDER RING AND LID) SEE MONUMENT DETAIL 1

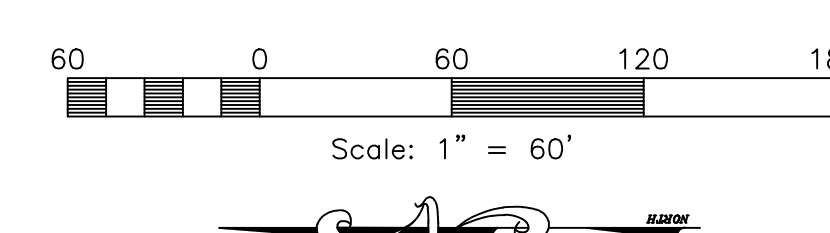
NORTH QUARTER CORNER OF SECTION 21, TOWNSHIP 6 NORTH, RANGE 2 WEST, SALT LAKE BASE AND MERIDIAN, U.S. SURVEY (FOUND BRASS CAP MONUMENT) SEE MONUMENT DETAIL 2

SOUTH QUARTER CORNER OF SECTION 21, TOWNSHIP 6 NORTH, RANGE 2 WEST, SALT LAKE BASE AND MERIDIAN, U.S. SURVEY (FOUND BRASS CAP MONUMENT 0.44' UNDER RING AND LID) SEE MONUMENT DETAIL 4

A 3rd review will not be done until all comments from previous review have been addressed especially boundary along east and north line.



- LEGEND**
- ◆ = SECTION CORNER
 - = WITNESS CORNER
 - = SET 5/8" X 24" REBAR AND PLASTIC CAP STAMPED "REEVE & ASSOCIATES"
 - = STREET CENTERLINE MONUMENT
 - = BOUNDARY LINE
 - = LOT LINE
 - = ADJOINING PROPERTY
 - = EASEMENTS
 - = SECTION/MONUMENT TIE LINE
 - = ROAD CENTERLINE



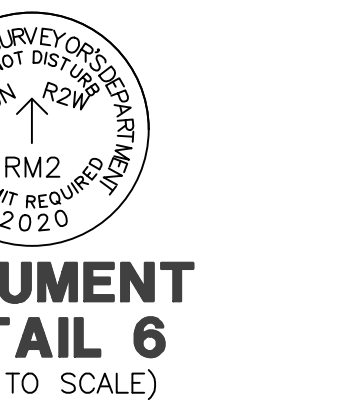
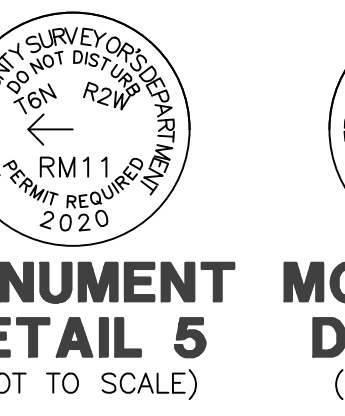
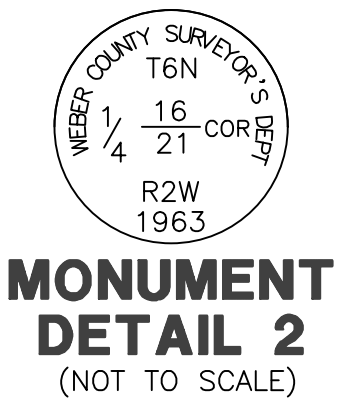
WEST QUARTER CORNER OF SECTION 21, TOWNSHIP 6 NORTH, RANGE 2 WEST, SALT LAKE BASE AND MERIDIAN, U.S. SURVEY (FOUND BRASS CAP MONUMENT) SEE MONUMENT DETAIL 3

N00°30'34"E 2632.62' (CALC'D)
S00°30'47"W 2632.67' (W.C.S.)

SOUTHWEST CORNER OF SECTION 21, TOWNSHIP 6 NORTH, RANGE 2 WEST, SALT LAKE BASE AND MERIDIAN, U.S. SURVEY (CALC'D NOT FOUND)

WITNESS CORNER TO THE SOUTHWEST CORNER OF SECTION 21, TOWNSHIP 6 NORTH, RANGE 2 WEST, SALT LAKE BASE AND MERIDIAN, U.S. SURVEY (FOUND BRASS CAP MONUMENT) SEE MONUMENT DETAIL 5

WITNESS CORNER TO THE SOUTHWEST CORNER OF SECTION 21, TOWNSHIP 6 NORTH, RANGE 2 WEST, SALT LAKE BASE AND MERIDIAN, U.S. SURVEY (FOUND BRASS CAP MONUMENT) SEE MONUMENT DETAIL 6



Project Info.

Surveyor: T. HATCH
 Designer: N. ANDERSON
 Begin Date: 4-3-2023
 Name: ANSEMI ACRES SUBD. PHASE 1
 Number: 7152-19
 Revision:
 Scale: 1"=60'
 Checked:

Reeve & Associates, Inc.
 5160 S 1500 W, RIVERDALE, UTAH 84405
 TEL: (801) 621-3100 FAX: (801) 621-2666 www.reeve.co

Weber County Recorder

Entry No. _____ Fee Paid _____
 And Recorded, _____
 At _____ In Book _____
 Of The Official Records, Page _____
 Recorded For: _____

 Weber County Recorder
 _____ Deputy.