

THE GROVE AT JDC RANCH SUBDIVISION PHASE 1

PART OF THE NORTHEAST QUARTER OF SECTION 27, TOWNSHIP 7 NORTH, RANGE 2 WEST, SALT LAKE BASE AND MERIDIAN, U.S. SURVEY
WEBER COUNTY, UTAH
JUNE, 2023

NORTHWEST CORNER OF SECTION 27, TOWNSHIP 7 NORTH, RANGE 2 WEST, SALT LAKE BASE AND MERIDIAN, U.S. SURVEY. FOUND 3" WEBER COUNTY SURVEY BRASS CAP MONUMENT IN CONCRETE MARKED "1963" IN GOOD CONDITION. (SEE DETAIL 1) 223

NORTHEAST CORNER OF SECTION 27, TOWNSHIP 7 NORTH, RANGE 2 WEST, SALT LAKE BASE AND MERIDIAN, U.S. SURVEY. CALCULATED 500'30'30"E 10.00'

FOUND 3" WEBER COUNTY SURVEY BRASS CAP WITNESS CORNER MONUMENT IN CONCRETE MARKED "1985" IN GOOD CONDITION (SEE DETAIL 2)



VICINITY MAP
NOT TO SCALE

SURVEYOR'S CERTIFICATE

I, **TREVOR J. HATCH**, DO HEREBY CERTIFY THAT I AM A PROFESSIONAL LAND SURVEYOR IN THE STATE OF UTAH IN ACCORDANCE WITH TITLE 58, CHAPTER 22, PROFESSIONAL ENGINEERS AND LAND SURVEYORS ACT; AND THAT I HAVE COMPLETED A SURVEY OF THE PROPERTY DESCRIBED ON THIS PLAT IN ACCORDANCE WITH SECTION 17-23-17 AND HAVE VERIFIED ALL MEASUREMENTS, AND HAVE PLACED MONUMENTS AS REPRESENTED ON THIS PLAT, AND THAT THIS PLAT OF **THE GROVE AT JDC RANCH SUBDIVISION PHASE 1** IN **WEBER COUNTY, UTAH**, HAS BEEN DRAWN CORRECTLY TO THE DESIGNATED SCALE AND IS A TRUE AND CORRECT REPRESENTATION OF THE HEREIN DESCRIBED LANDS INCLUDED IN SAID SUBDIVISION, BASED UPON DATA COMPILED FROM RECORDS IN THE **WEBER COUNTY** RECORDER'S OFFICE AND FROM SAID SURVEY MADE BY ME ON THE GROUND. I FURTHER CERTIFY THAT THE REQUIREMENTS OF ALL APPLICABLE STATUTES AND ORDINANCES OF **WEBER COUNTY** CONCERNING ZONING REQUIREMENTS REGARDING LOT MEASUREMENTS HAVE BEEN COMPLIED WITH.

SIGNED THIS _____ DAY OF _____, 20____.

9031945
UTAH LICENSE NUMBER

TREVOR J. HATCH
PROFESSIONAL LAND SURVEYOR
STATE OF UTAH

MONUMENT DETAIL 1
(NOT TO SCALE)

MONUMENT DETAIL 2
(NOT TO SCALE)

BASIS OF BEARINGS

THE BASIS OF BEARINGS FOR THIS PLAT IS THE MONUMENT LINE BETWEEN A FOUND WITNESS CORNER BRASS CAP MONUMENT TO THE NORTHEAST CORNER OF SECTION 27 AND A FOUND BRASS CAP MONUMENT AT THE NORTHWEST CORNER OF SECTION 27, TOWNSHIP 7 NORTH, RANGE 2 WEST, SALT LAKE BASE AND MERIDIAN, U.S. SURVEY, SHOWN HEREON AS N88°23'58"W.

NARRATIVE

THE PURPOSE OF THIS PLAT IS TO DIVIDE THE BELOW DESCRIBED PROPERTY INTO LOTS AND STREETS AS SHOWN. ALL BOUNDARY CORNERS AND REAR LOT CORNERS WERE SET WITH A 5/8" X 24" REBAR AND PLASTIC CAP STAMPED "REEVE & ASSOCIATES".

BOUNDARY DESCRIPTION

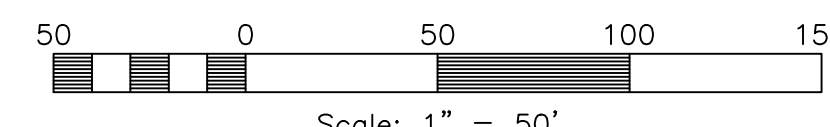
PART OF THE NORTHEAST QUARTER OF SECTION 27, TOWNSHIP 7 NORTH, RANGE 2 WEST, SALT LAKE BASE AND MERIDIAN, U.S. SURVEY, DESCRIBED AS FOLLOWS:

BEGINNING AT A POINT BEING NORTH 88°23'58" WEST 798.00 FEET AND SOUTH 01°36'02" WEST 2052.12 FEET FROM A FOUND WITNESS CORNER MONUMENT TO THE NORTHEAST CORNER OF SAID SECTION 27; THENCE SOUTH 00°01'42" EAST 573.50 FEET; THENCE NORTH 88°25'12" WEST 651.91 FEET TO THE SOUTHEAST CORNER OF WEST PARK VILLAGE PHASE 2; THENCE NORTH 00°05'44" WEST 733.19 FEET ALONG THE WEST LINE OF SAID WEST PARK VILLAGE PHASE 2; THENCE NORTH 89°54'16" EAST 131.46 FEET; THENCE SOUTH 82°12'42" EAST 66.67 FEET; THENCE NORTH 89°54'16" EAST 132.18 FEET; THENCE SOUTH 00°05'44" EAST 160.00 FEET; THENCE NORTH 89°54'16" EAST 132.63 FEET; THENCE SOUTH 81°07'51" EAST 60.73 FEET; THENCE NORTH 89°58'18" EAST 130.00 FEET TO THE POINT OF BEGINNING.

CONTAINING 426,689 SQUARE FEET OR 9.795 ACRES.

LEGEND

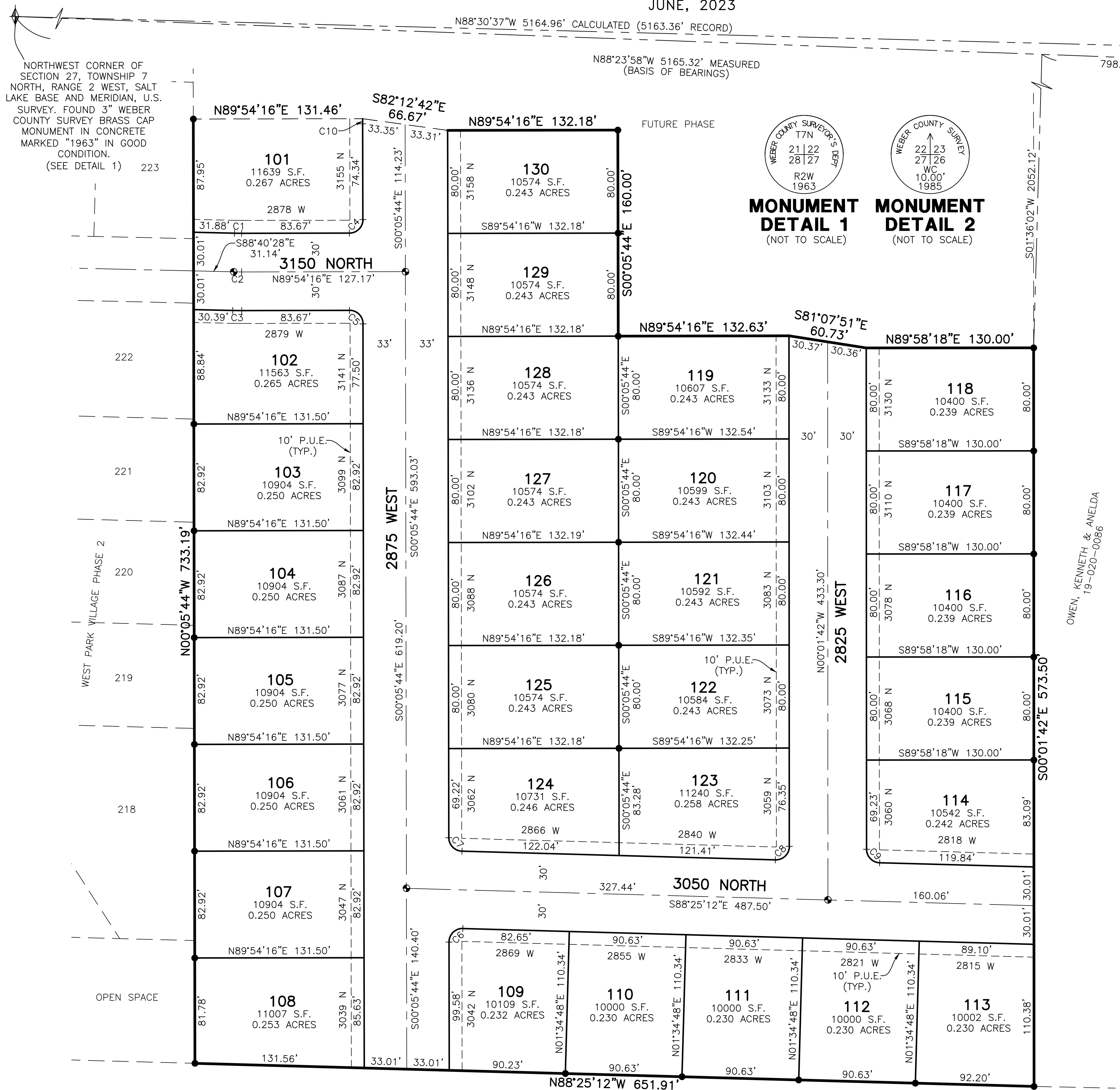
- SECTION CORNER
- WITNESS CORNER
- SET 5/8" X 24" REBAR AND PLASTIC CAP STAMPED "REEVE & ASSOCIATES"
- STREET CENTERLINE MONUMENT
- BOUNDARY LINE
- LOT LINE
- ADJOINING PROPERTY
- EASEMENTS
- SECTION/MONUMENT TIE LINE
- ROAD CENTERLINE



Scale: 1" = 50'

CURVE TABLE

#	RADIUS	ARC LENGTH	CHD LENGTH	TANGENT	CHD BEARING	DELTA
C1	220.00'	5.46'	5.46'	2.73'	S89°23'06"E	1°25'16"
C2	250.00'	6.20'	6.20'	3.10'	S89°23'06"E	1°25'16"
C3	280.00'	6.94'	6.94'	3.47'	S89°23'06"E	1°25'16"
C4	10.50'	16.49'	14.85'	10.50'	N44°54'16"E	90°00'00"
C5	10.50'	16.49'	14.85'	10.50'	S45°05'44"E	90°00'00"
C6	10.50'	16.80'	15.06'	10.81'	N45°44'32"E	91°40'32"
C7	10.50'	16.19'	14.63'	10.20'	N44°15'28"W	88°19'28"
C8	10.50'	16.79'	15.06'	10.80'	N45°46'33"E	91°36'30"
C9	10.50'	16.20'	14.64'	10.21'	N44°13'27"W	88°23'30"
C10	217.00'	3.96'	3.96'	1.98'	S00°37'08"E	1°02'48"



PACIFIC LANDING V LLC
19-019-0008

WEBER COUNTY PLANNING COMMISSION APPROVAL

THIS IS TO CERTIFY THAT THIS SUBDIVISION PLAT WAS DULY APPROVED BY THE WEBER COUNTY PLANNING COMMISSION. SIGNED THIS _____ DAY OF _____, 20____.

CHAIRMAN, WEBER COUNTY PLANNING COMMISSION

WEBER COUNTY ENGINEER

I HEREBY CERTIFY THAT THE REQUIRED PUBLIC IMPROVEMENT STANDARDS AND DRAWINGS FOR THIS SUBDIVISION CONFORM WITH THE COUNTY STANDARDS AND THE AMOUNT OF THE FINANCIAL GUARANTEE IS SUFFICIENT FOR THE INSTALLATION OF THESE IMPROVEMENTS.

WEBER COUNTY ENGINEER

WEBER COUNTY COMMISSION ACCEPTANCE

THIS IS TO CERTIFY THAT THIS SUBDIVISION PLAT, THE DEDICATION OF STREETS AND OTHER PUBLIC WAYS AND FINANCIAL GUARANTEE OF PUBLIC IMPROVEMENTS ASSOCIATED WITH THIS SUBDIVISION, THEREON ARE HEREBY APPROVED AND ACCEPTED BY THE COMMISSIONERS OF WEBER COUNTY, UTAH. SIGNED THIS _____ DAY OF _____, 20____.

CHAIRMAN, WEBER COUNTY COMMISSION

ATTEST _____ TITLE _____

WEBER COUNTY SURVEYOR

I HEREBY CERTIFY THAT THE WEBER COUNTY SURVEYOR'S OFFICE HAS REVIEWED THIS PLAT AND ALL CONDITIONS FOR APPROVAL BY THIS OFFICE HAVE BEEN SATISFIED. THE APPROVAL OF THIS PLAT BY THE WEBER COUNTY SURVEYOR DOES NOT RELIEVE THE LICENSED LAND SURVEYOR WHO EXECUTED THIS PLAT FROM THE RESPONSIBILITIES AND/OR LIABILITIES ASSOCIATED THEREWITH. SIGNED THIS _____ DAY OF _____, 20____.

WEBER COUNTY SURVEYOR

RECORD OF SURVEY # _____

WEBER COUNTY ATTORNEY

I HAVE EXAMINED THE FINANCIAL GUARANTEE AND OTHER DOCUMENTS ASSOCIATED WITH THIS SUBDIVISION PLAT, AND IN MY OPINION THEY CONFORM WITH THE COUNTY ORDINANCE APPLICABLE THERETO AND NOW IN FORCE AND AFFECT. SIGNED THIS _____ DAY OF _____, 20____.

WEBER COUNTY ATTORNEY

WEBER-MORGAN HEALTH DEPARTMENT

I HEREBY CERTIFY THAT THE SOILS, PERCOLATION RATES, AND SITE CONDITIONS FOR THIS SUBDIVISION HAVE BEEN INVESTIGATED BY THIS OFFICE AND ARE APPROVED FOR ON-SITE WASTEWATER DISPOSAL SYSTEMS. SIGNED THIS _____ DAY OF _____, 20____.

DIRECTOR, WEBER-MORGAN HEALTH DEPARTMENT

Weber County Recorder

Entry No. _____ Fee Paid _____

And Recorded, _____

At _____ in Book _____

Of The Official Records, Page _____

SIGNED THIS _____ DAY OF _____, 20____.

Recorded For: _____

Weber County Recorder

Deputy.

Project Info.

Surveyor: T. HATCH

Designer: N. ANDERSON

Begin Date: 3-1-2023

Name: THE GROVE AT JDC RANCH SUBD. PHASE 1

Number: 1301-D41

Revision: 8-2-23 E.R.

Scale: 1"=50'

Checked: _____

RA Reeve & Associates, Inc.

5160 S 1500 W, RIVERDALE, UTAH 84405
TEL: (801) 621-3100 FAX: (801) 621-2666 www.reeve.co

DEVELOPER: STEWARD DEVELOPMENT SKY HAZLEHURST 1708 EAST 5550 SOUTH SOUTH OGDEN, UT. 74405 (801) 837-2020