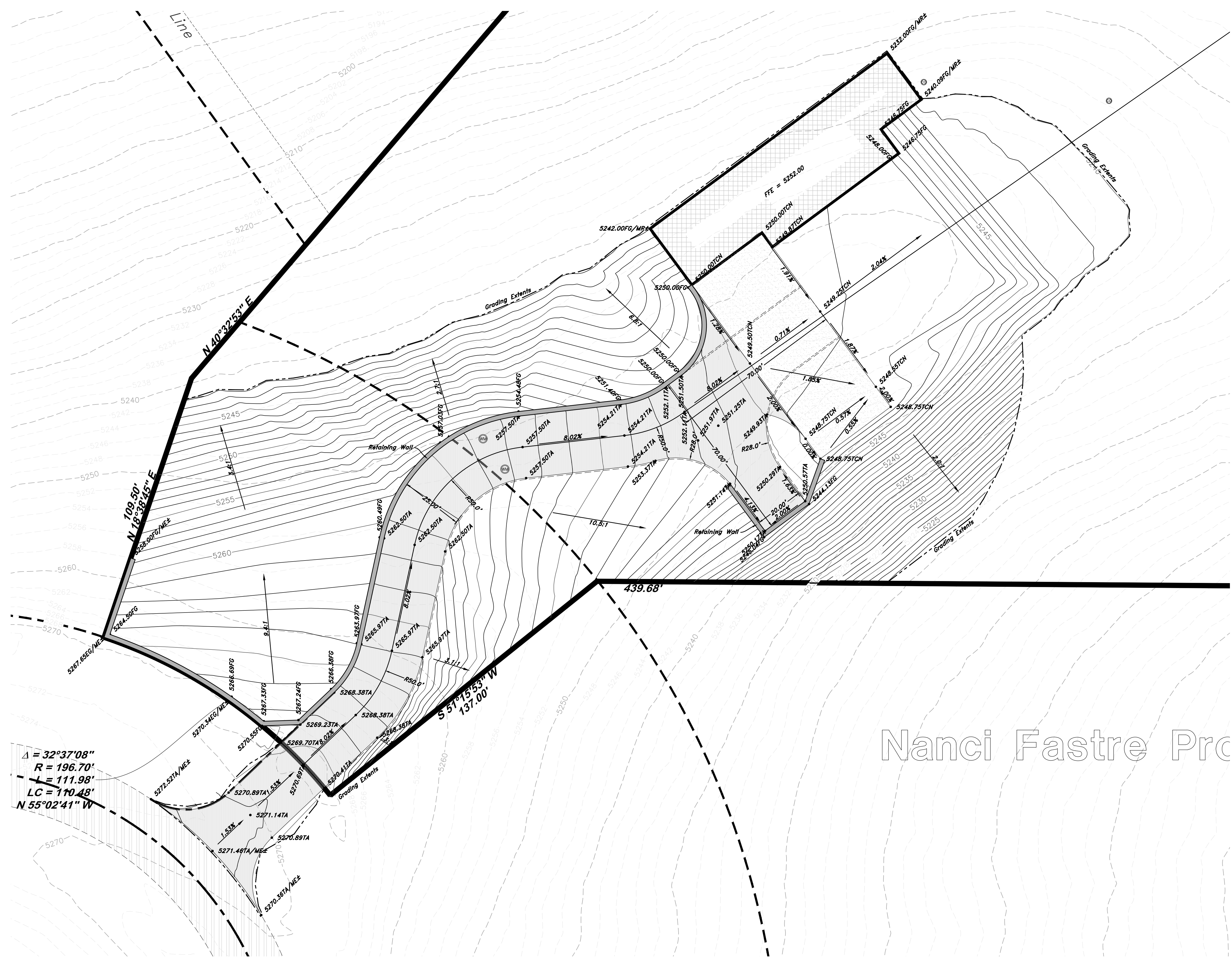


Legend

(Note: All items may not appear on drawing)

- San. Sewer Manhole
- Water Manhole
- Storm Drain Manhole
- Electrical Manhole
- Catch Basins
- Exist. Fire Hydrant
- Fire Hydrant
- Exist. Water Valve
- Water Valve
- Sanitary Sewer
- Culinary Water
- Gas Line
- Irrigation Line
- Storm Drain
- Overhead Telephone Line
- Underground Telephone
- Secondary Waterline
- Underground Power Line
- Overhead Power line
- Fire Line
- Land Drain
- Power pole
- Power pole w/guy
- Light Pole
- Fence
- Flowline of ditch
- Corrugated Metal Pipe
- Concrete Pipe
- Reinforced Concrete Pipe
- Ductile Iron
- Polyvinyl Chloride
- Top of Asphalt
- Edge of Asphalt
- Centerline
- Flowline
- Finish Floor
- Top of Curb
- Top of Walk
- Top of Concrete
- Finish Contour
- Finish Grade
- Exist. Grade
- Ridge Line
- Direction of Flow
- Existing Asphalt
- New Asphalt
- Heavy Duty Asphalt
- Concrete
- Open Face
- Curb & Gutter



$\Delta = 32^\circ 37' 08''$
 $R = 196.70'$
 $L = 111.98'$
 $LC = 110.48'$
 $N 55^\circ 02' 41'' W$

Nanci Fastre Pro

NO.	REV.	DATE	DESCRIPTION

Preliminary
Not for
Construction

GREAT BASIN ENGINEERING

5746 SOUTH 1475 EAST, OGDEN, UTAH 84403
 MAIN (801) 551-4515 FAX (801) 551-7504
 WWW.GREATBASINENGINEERING.COM

Grading & Drainage Plan
Samarel Property

13 APR 2023

SHEET NO.
C2.1

20N224