

SECTION 29, T.6N., R.2W., S.L.B. & M.

IN WEBER COUNTY

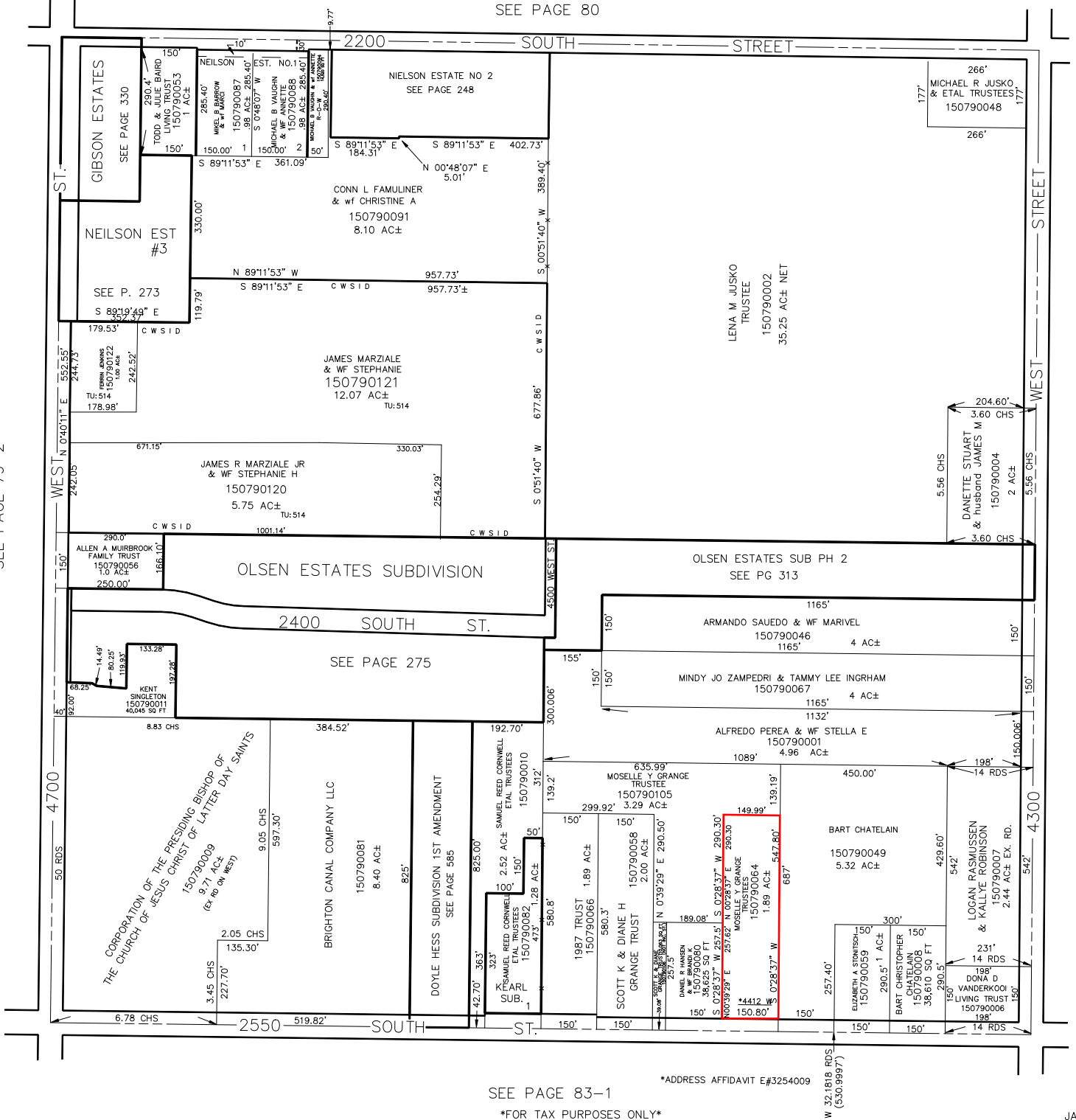
SCALE 1" = 200'

SEE PAGE 80

TAXING UNITS: 516, 514

SEE PAGE 79-2

SEE PAGE 78-3



SEE PAGE 83-1

*ADDRESS AFFIDAVIT E#3254009

FOR TAX PURPOSES ONLY