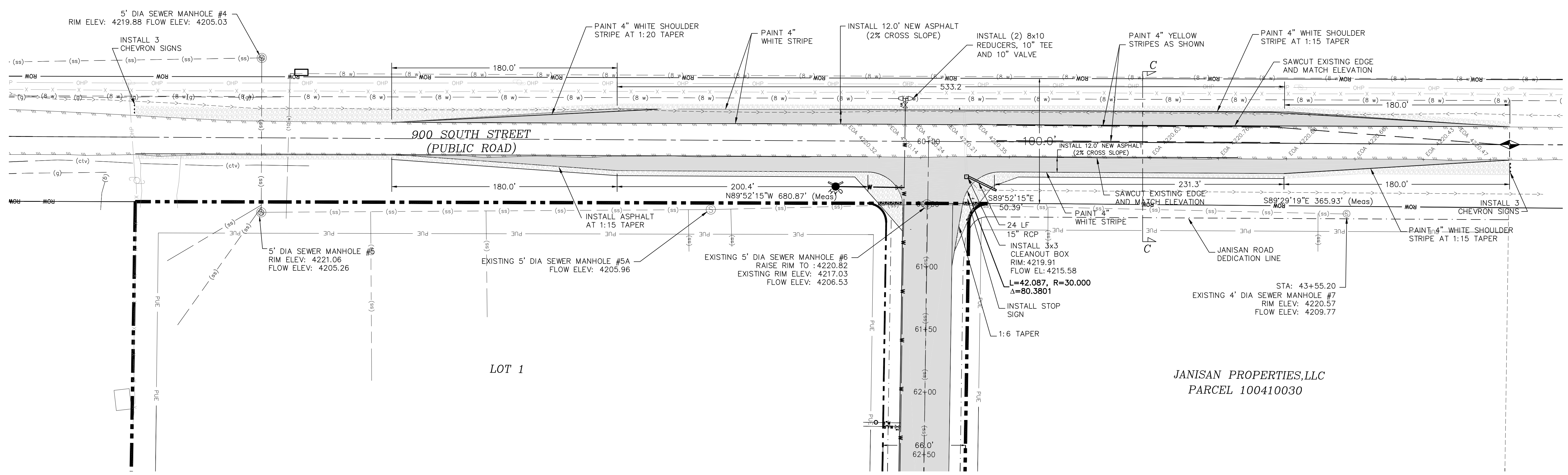


LEGEND

- 29/32 = SECTION CORNER & SECTION LINE
- 32/33 = BOUNDARY LINE
- = RIGHT OF WAY LINES
- = ADJOINING PARCELS DEED LINES
- = EXISTANT FENCE LINES
- = PRIVATE UTILITY EASEMENT
- (8 w) = EXISTING 8" WATER LINE
- (8 w) = ROAD CENTER LINE
- = EXISTING EDGE OF ASPHALT
- (ss) = EXISTING SEWER
- (w) = PROPOSED WATERLINE
- = EXISTING DITCH FLOWLINE

(C) SECTION 900 SOUTH



HOWARD INDUSTRIAL
 ADDITIONAL ASPHALT ON 900 SOUTH
 WEBER COUNTY, UTAH



DWG DATE: June 2023
 PLOT DATE: 07 June 2023

SHEET
 4