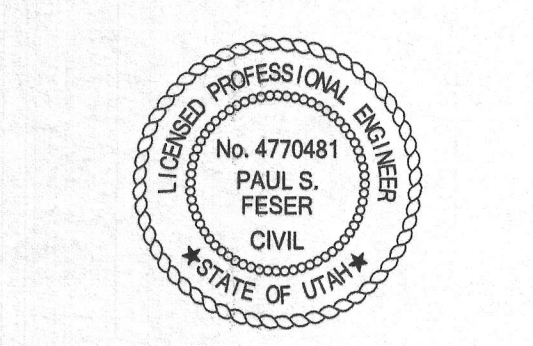


©2011 MHTN ARCHITECTS, INC.
Drawings, whether printed, and design concepts shall not be used or reproduced in whole or part in any form or medium without consent of MHTN Architects, Inc. Do not scale drawings. Use given dimensions only. If not shown, verify correct dimensions with the architect. Contractor shall check and verify all dimensions and conditions at job site.



MHTN PROJECT NO. 2012545-00

DRAWN BY: BP CHECKED BY: PF

NO.	DATE	DESCRIPTION
1	1/28/2014	CONSTRUCTION DOCUMENTS

CONTRACTOR TO VERIFY DRAWINGS IN FIELD USE REFLECT LAST REVISION DATE

NO.	DATE	DESCRIPTION

SHEET NAME
DRAINAGE PLAN

CONSTRUCTION DOCUMENTS

SHEET NUMBER
CE-302

GENERAL NOTES:

EXISTING UNDERGROUND UTILITIES AND IMPROVEMENTS ARE SHOWN IN THEIR APPROXIMATE LOCATIONS BASED UPON RECORD INFORMATION AVAILABLE AT THE TIME OF PREPARATION OF PLANS. LOCATIONS MAY NOT HAVE BEEN VERIFIED IN THE FIELD AND NO GUARANTEE IS MADE AS TO ACCURACY OR COMPLETENESS OF THE INFORMATION SHOWN. IT SHALL BE THE RESPONSIBILITY OF THE CONTRACTOR TO DETERMINE THE EXISTENCE AND LOCATION OF THOSE UTILITIES SHOWN ON THESE PLANS OR INDICATED IN THE FIELD BY LOCATING SERVICES. ANY ADDITIONAL COSTS INCURRED AS A RESULT OF CONTRACTOR'S FAILURE TO VERIFY LOCATIONS OF EXISTING UTILITIES PRIOR TO BEGINNING OF CONSTRUCTION IN THEIR WORK SHALL BE BORNE BY THE CONTRACTOR AND ASSUMED INCLUDED IN THE CONTRACT.

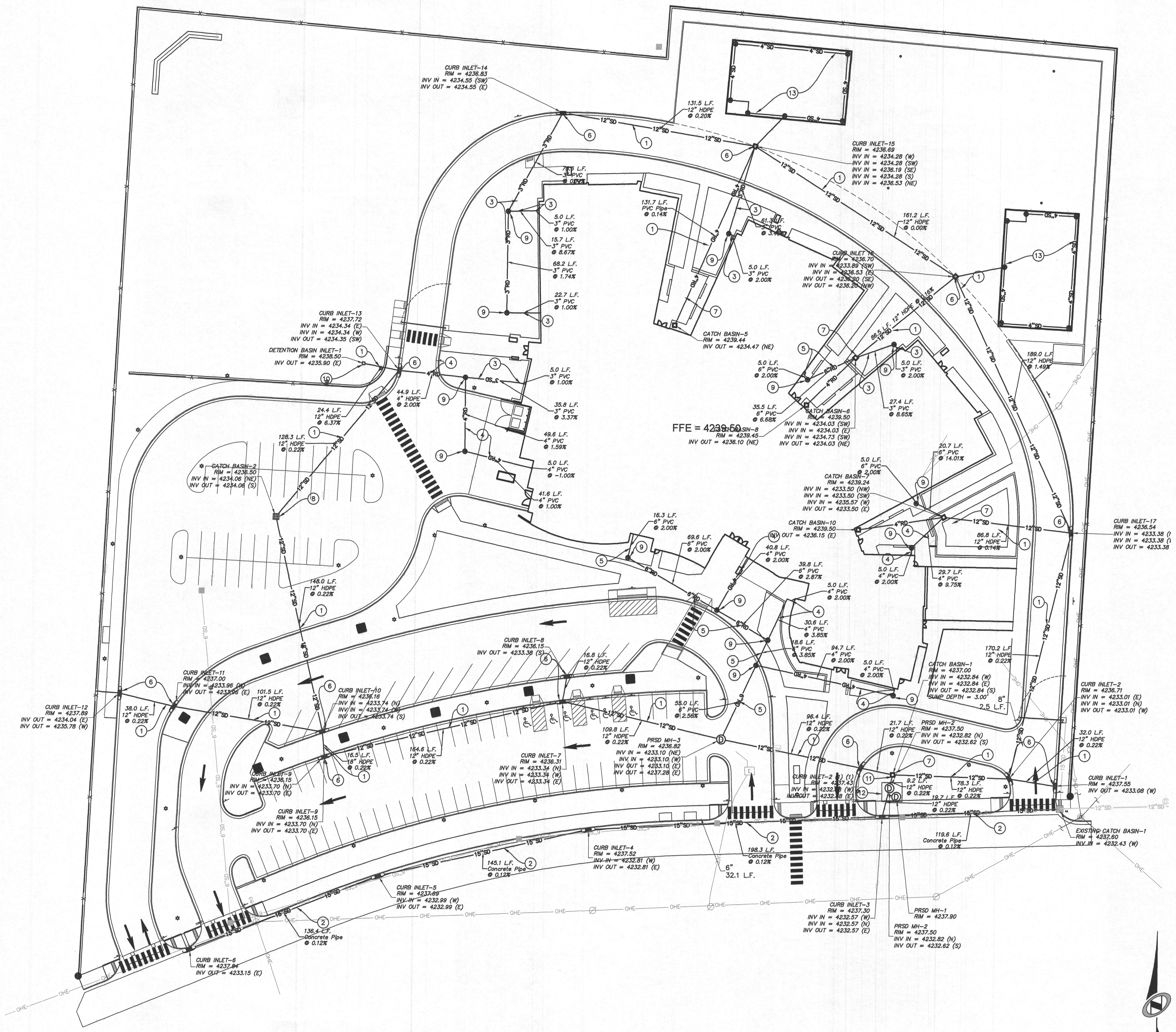
LOCATIONS OF ALL UNDERGROUND UTILITIES SHOWN ARE APPROXIMATE. CONTRACTOR IS TO VERIFY CONNECTION POINTS WITH EXISTING UTILITIES. CONTRACTOR IS RESPONSIBLE FOR ANY DAMAGE CAUSED TO EXISTING UTILITIES AND UTILITY STRUCTURES THAT ARE TO REMAIN.

ALL SURFACE IMPROVEMENTS DISTURBED BY CONSTRUCTION SHALL BE RESTORED OR REPLACED, INCLUDING TREES, DECORATIVE SHRUBS, SOIL, FENCES, WALLS AND STRUCTURES, WHETHER OR NOT THEY ARE SPECIFICALLY SHOWN ON THE CONTRACT DOCUMENTS.

CONTRACTOR IS TO COORDINATE ALL UTILITIES WITH MECHANICAL AND ELECTRICAL DRAWINGS.

SCOPE OF WORK:
PROVIDE, INSTALL AND/OR CONSTRUCT THE FOLLOWING PER THE SPECIFICATIONS GIVEN OR REFERENCED, THE DETAILS NOTED, AND/OR AS SHOWN ON THE CONSTRUCTION DRAWINGS:

- 12" CORRUGATED HDPE STORM DRAIN LINE OR APPROVED EQUAL. TRENCHING PER APWA STANDARD PLAN 381 AND 382. SEE DETAIL 4 ON SHEET CE-603. LENGTH AND SLOPE PER THIS SHEET.
- 18" CL III RCP STORM DRAIN LINE. TRENCHING PER APWA STANDARD PLAN 381 AND 382. SEE DETAIL 4 ON SHEET CE-603. LENGTH AND SLOPE PER DRAINAGE PLAN ON SHEET CE-302.
- 3" SCH 40 ROOF DRAIN LINE. TRENCHING PER APWA STANDARD PLAN 381 AND 382. SEE DETAIL 4 ON SHEET CE-603. LENGTH AND SLOPE PER DRAINAGE PLAN ON SHEET CE-302.
- 4" SCH 40 ROOF DRAIN LINE. TRENCHING PER APWA STANDARD PLAN 381 AND 382. SEE DETAIL 4 ON SHEET CE-603. LENGTH AND SLOPE PER DRAINAGE PLAN ON SHEET CE-302.
- 6" SCH 40 ROOF DRAIN LINE. TRENCHING PER APWA STANDARD PLAN 381 AND 382. SEE DETAIL 4 ON SHEET CE-603. LENGTH AND SLOPE PER DRAINAGE PLAN ON SHEET CE-302.
- 24" X 24" PRECAST CURB CATCH BASIN OR APPROVED EQUAL PER APWA PLAN NO. 315. SEE DETAIL 1 ON SHEET CE-603.
- 24" X 24" PRECAST BOX PER APWA PLAN NO. 332. SEE DETAIL 2 ON SHEET CE-603.
- 48" X 48" PRECAST BOX PER APWA PLAN NO. 332. SEE DETAIL 2 ON SHEET CE-603.
- INSTALL CLEANOUT PER DETAIL 6 ON SHEET CE-603.
- DEBRIS GRATE INLET PER APWA PLAN NO. 320. SEE DETAIL 8 ON SHEET CE-603.
- 12" ADS ORIFICE PLATE ON UPSTREAM END OF OUTLET PIPE. CONTRACTOR TO DRILL XX" HOLE IN CENTER OF PLATE. SEE DETAIL 9 ON SHEET CE-603.
- INSTALL BAYSEPARATOR OR APPROVED EQUAL PER DETAIL 7 ON SHEET CE-603.
- 4" ADS PERFORATED PIPE IN SOCK WITH CLEANOUTS @ BENDS



DATE: 1/28/2014 TIME: 8:56:27 AM DRAWING NAME: CE-302.DWG
USER: JACOBSON\JACOBSON, JAVIER - JACOBSON, JAVIER
PLOT: C:\Users\jacobson\Documents\CE-302.DWG

BP
REFERENCES: MHTN - 30442, EXHA, EXHA, FINISHES, EXHA, FINISHES

E
D
C
B
A