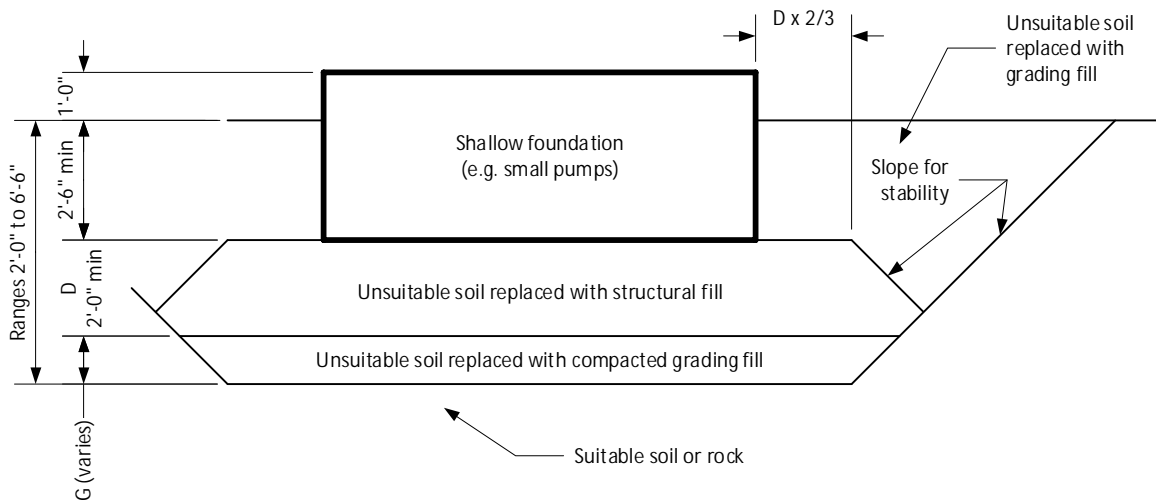
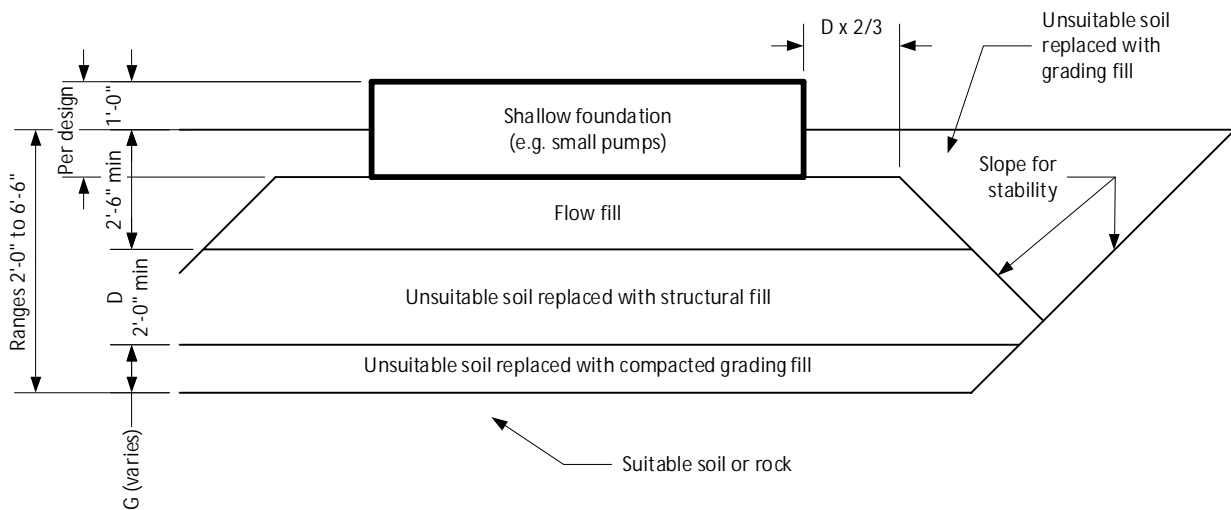


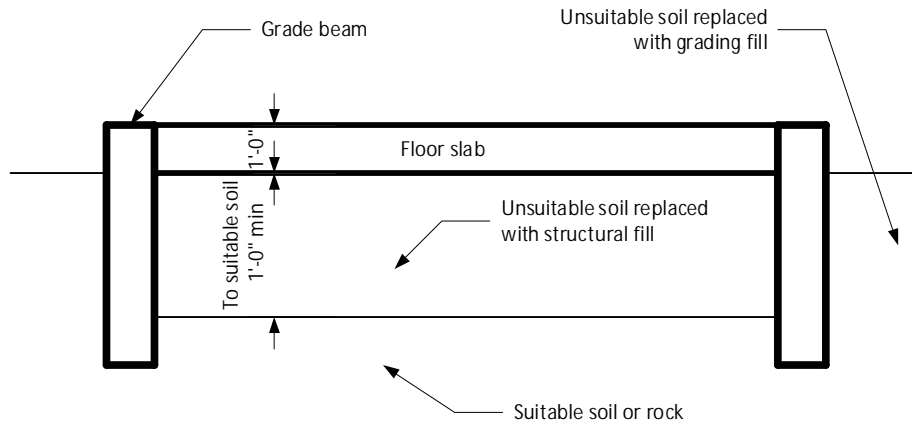
1. Shallow or mat foundation placed directly on suitable soil or rock.



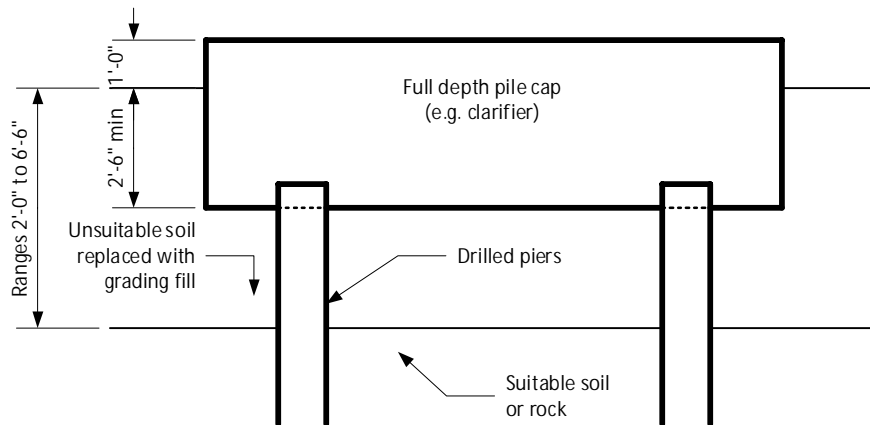
2. Shallow or mat foundation placed where unsuitable material exists.



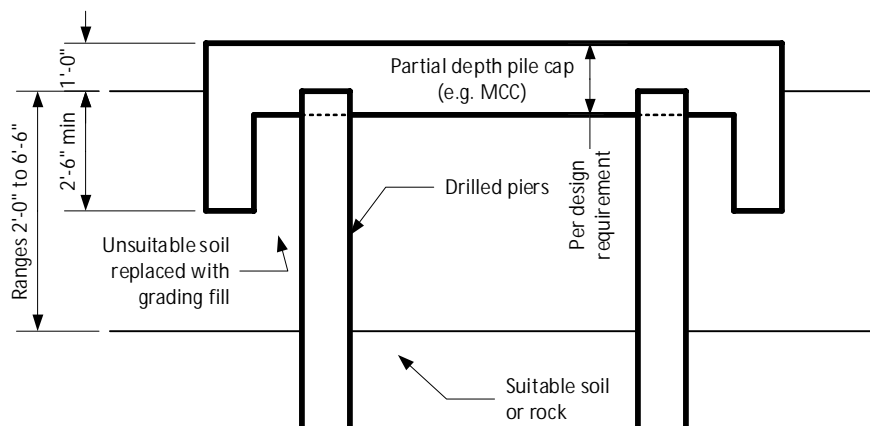
3. Shallow or mat foundation with small loads, shown with unsuitable material.



4. Floor slab (expected only inside DLE building during Phase 1).



5. Pile cap and drilled piers for large load.



6. Pile cap and drilled piers for small load.