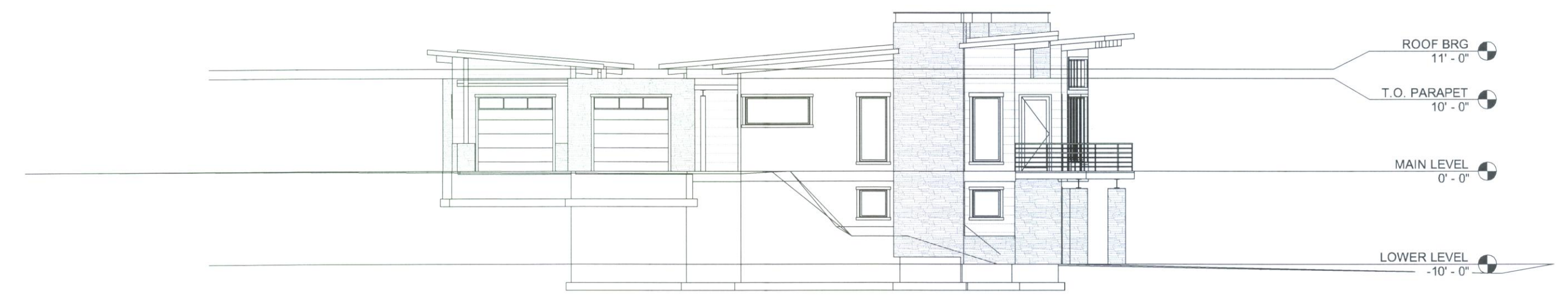


# THE RIDGE TOWNHOMES

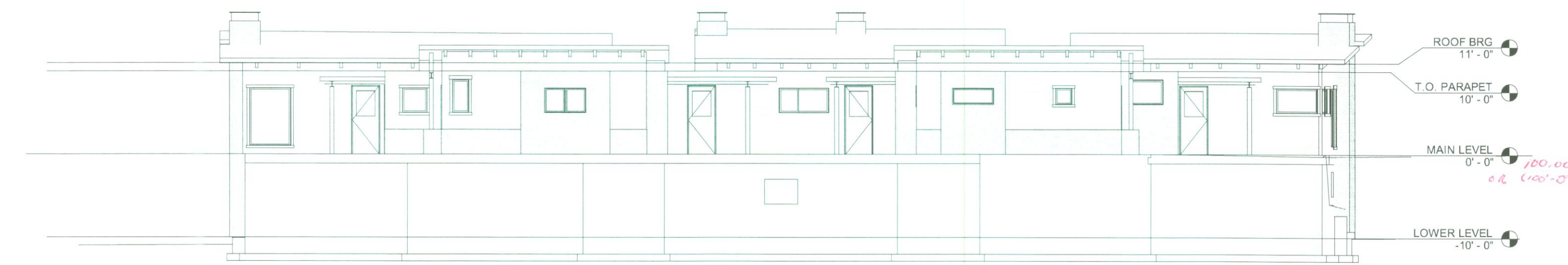
## PHASE 1



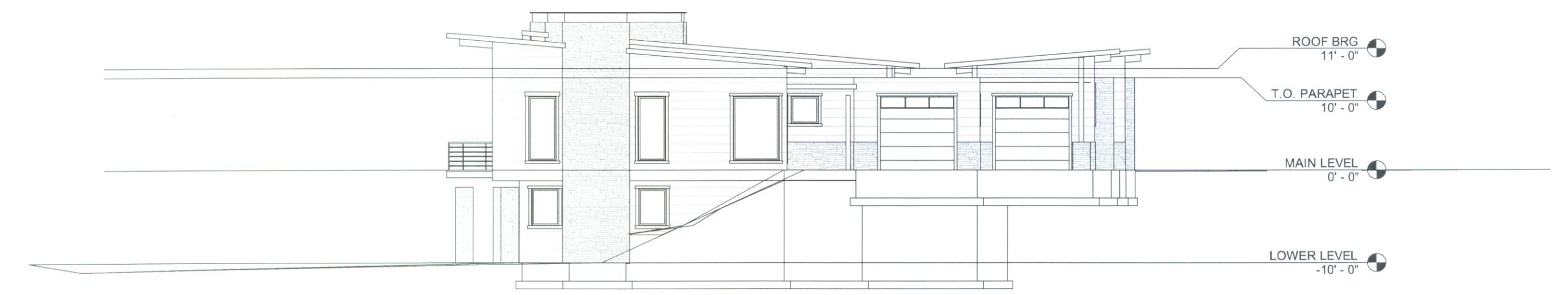
SOUTH ELEVATION



WEST ELEVATION



NORTH ELEVATION



EAST ELEVATION

- ① SEE PG 1 - ITEM #1
- Ⓐ ARE THE MAIN FLOOR ELEVATIONS FOR BOTH BLDGS GOING TO BE AT THE SAME ELEVATION?
- Ⓑ A GEODETIC ELEVATION CAN BE PUT IN THE N/2 CORNER AND REFERENCE THE MAIN FLOOR ELEVATIONS TO THAT ELEVATION. IN DOUBT, IF BY CHANCE, THE N/4 GETS DISTURBED, A PRECISE BENCH CAN BE RE-ESTABLISHED (BEST CASE SCENARIO).
- Ⓒ PUT AN ELEVATION ON THE N/4 BASED ON A 100'-0" ELEVATION OR ONE OF THE MAIN FLOORS. (MAIN FLOOR THEN BECOMES THE PROJECT BENCH SHOULD THE N/4 GET DISTURBED.)

SHEET 4 OF 4

Prepared By:



www.gardnerengineering.net

COUNTY RECORDER

ENTRY NO. \_\_\_\_\_ FEE PAID \_\_\_\_\_  
 \_\_\_\_\_ FILED FOR RECORD AND  
 RECORDED \_\_\_\_\_ AT  
 IN \_\_\_\_\_ BOOK OF OFFICIAL  
 RECORDS, PAGE \_\_\_\_\_ RECORDED  
 FOR \_\_\_\_\_  
 COUNTY RECORDER  
 BY: \_\_\_\_\_ DEPUTY