



Central Weber Sewer Improvement District

February 24, 2020

Weber County Planning Commission
2380 Washington Blvd.
Ogden, Utah 84401-1473

SUBJECT: The Residences at Sunset Meadows
Sanitary Sewer Will Serve Letter

We have reviewed the preliminary subdivision plans for the Sunset Meadows development that consists of 156 residential units on 109.62 acres located near 4300 West 2200 South in the Taylor area of Weber County. This project is being developed by Jessica Prestwich and Sierra Homes will be the owner. We can treat the sanitary sewer from this proposed development and offer the following comments.

1. Central Weber does have the capacity to treat the sanitary sewer flow from this proposed development.
2. This property will need to be annexed into the Central Weber Sewer Improvement District prior to any connections being made to the District's sanitary sewer lines on 2200 South or 4100 West.
3. Details of any connection and/or manhole construction being made directly to Central Weber's main line will need to be submitted to Central Weber and approved prior to construction and the connection being made.
4. Any connection to Central Weber's line must be inspected by Central Weber while the work is being done. A minimum of 48-hour notice for inspection shall be given to Central Weber prior to any work associated with the connection.
5. Central Weber will not take ownership or responsibility for the condition, ownership or maintenance of the proposed sanitary sewer lines (gravity or pressure) or system that are proposed as a part of this development.

6. The connection of any sump pumps (or similar type pumps) to the sanitary sewer system is prohibited during or after construction. Central Weber's Wastewater Control Rules and Regulations state:

Prohibited Discharge into Sanitary Sewer. No person shall discharge or cause or make a connection which would allow to be discharged any storm water, surface water, groundwater, roof water runoff or subsurface drainage to any sanitary sewer.

7. The Central Weber Sanitary Sewer Impact Fee for each lot will need to be paid to Weber County at the time of issuance of a Building Permit. The current Residential Impact fee is \$2,395.

If you have any further questions or need additional information please let us know.

Sincerely,



Lance L Wood, P. E.
General Manager

Attachments: Preliminary Development Plans

cc: Jessica Prestwich, jessicap@sierrahomes.com



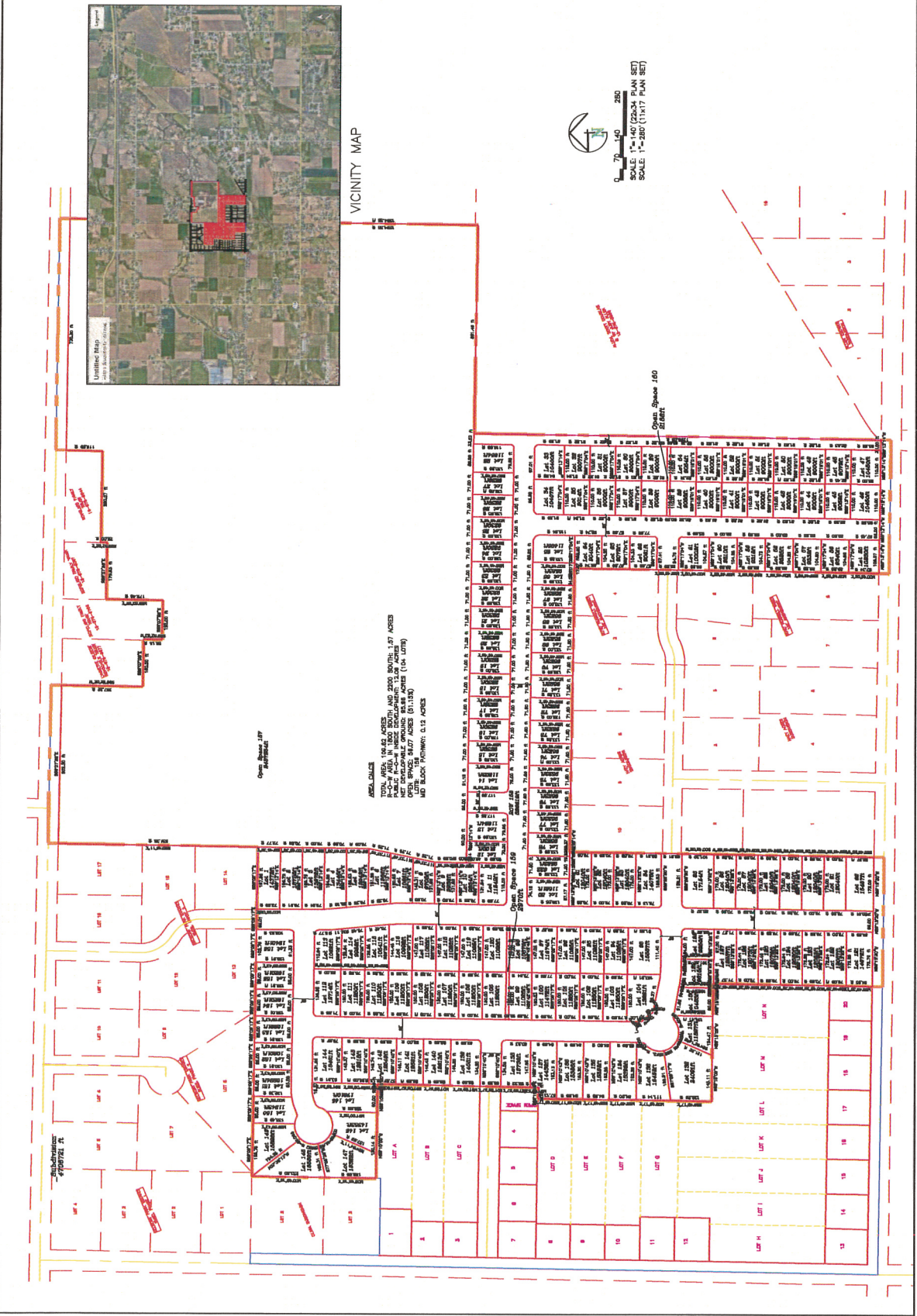
ALLIANCE CONSULTING ENGINEERS
 1750 EAST 290th STREET, P.O. BOX 100
 LOAN, UTAH 84021
 (435) 734-9121
 office@alliancece.com

CONFIDENTIALITY AND COPYRIGHT NOTICE
 DRAWINGS ARE REVISIONS, OR PARTS OF THE PROJECT OR OTHERWISE.
 CONTRACTOR SHALL BE RESPONSIBLE FOR THE PROTECTION OF THESE DRAWINGS.
 COPYRIGHT 2015

| | |
|----------|---------------------------|
| DATE: | 1/20/24 |
| PROJECT: | SUNSET MEADOWS |
| SCALE: | 1"=140' (220-24 PLAN SET) |
| SCALE: | 1"=250' (11X17 PLAN SET) |

SUNSET MEADOWS
 CONCEPT

DATE: JAN 2024
 SHEET NO. 1



AS-PLANNED
 150' WIDE, 150' DEPTH AND 200' BOUNDARY LOT ACRES
 150' WIDE, 150' DEPTH AND 200' BOUNDARY LOT ACRES
 150' WIDE, 150' DEPTH AND 200' BOUNDARY LOT ACRES
 150' WIDE, 150' DEPTH AND 200' BOUNDARY LOT ACRES