

An aerial photograph of a large lake with a lodge complex on a forested hillside. The lodge consists of several buildings with brown roofs, surrounded by trees with autumn foliage. The lake is blue and has several small islands. In the background, there are mountains under a clear sky.

Lakeview Haven Lodge

The Premier Ogden Valley Recreational Lodge

Site Plan

Lakeview Haven Lodge

Property Boundary and Onsite Recreation

Pineview Reservoir

Highway 39 Frontage

Private Access Road

Overflow Parking

Lakeview Haven Sign

Main Parking: 8 Spots

Lodge: 6 Guest Rooms
5,200sf

Set Back: 125.94 ft

Overflow Parking

Pickleball Court

Event Space

Trails: Hiking, Mtn Biking, Snowshoeing, Cross Country Skiing

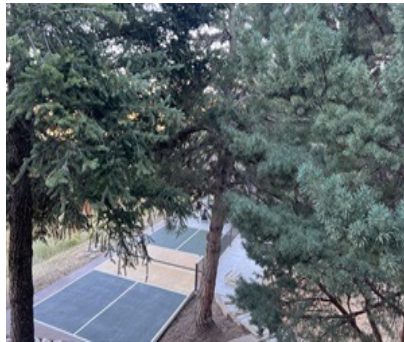
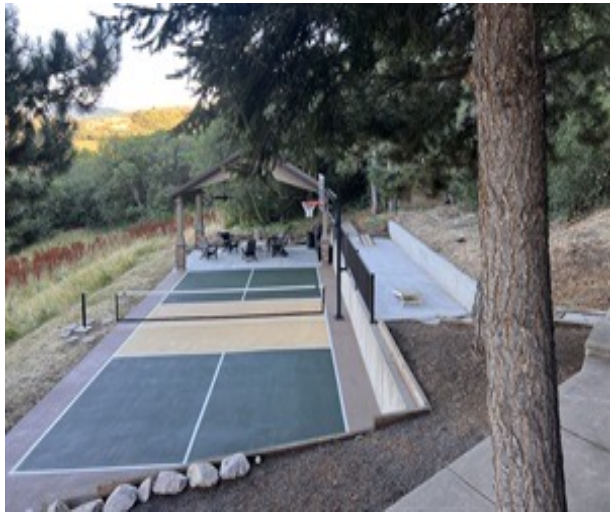
Property Boundary

Winter Sledding Track



Nestled on nearly 15 wooded Acres Lakeview Haven Lodge provides a premier location for visitors to enjoy outdoor summer and winter recreation on property.

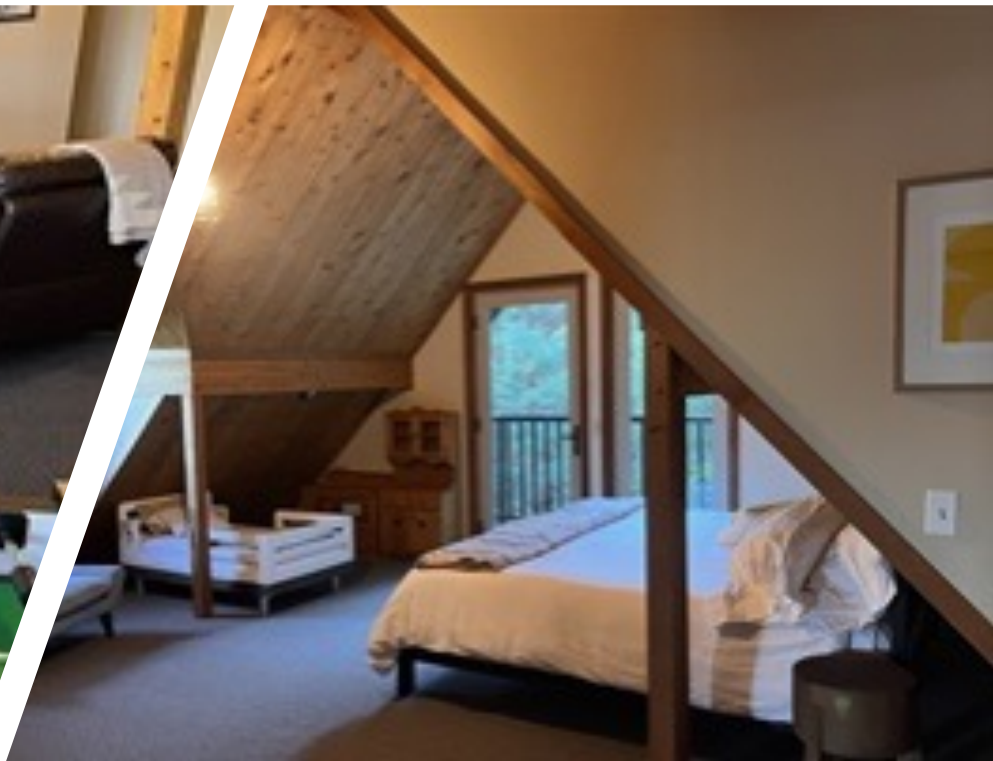
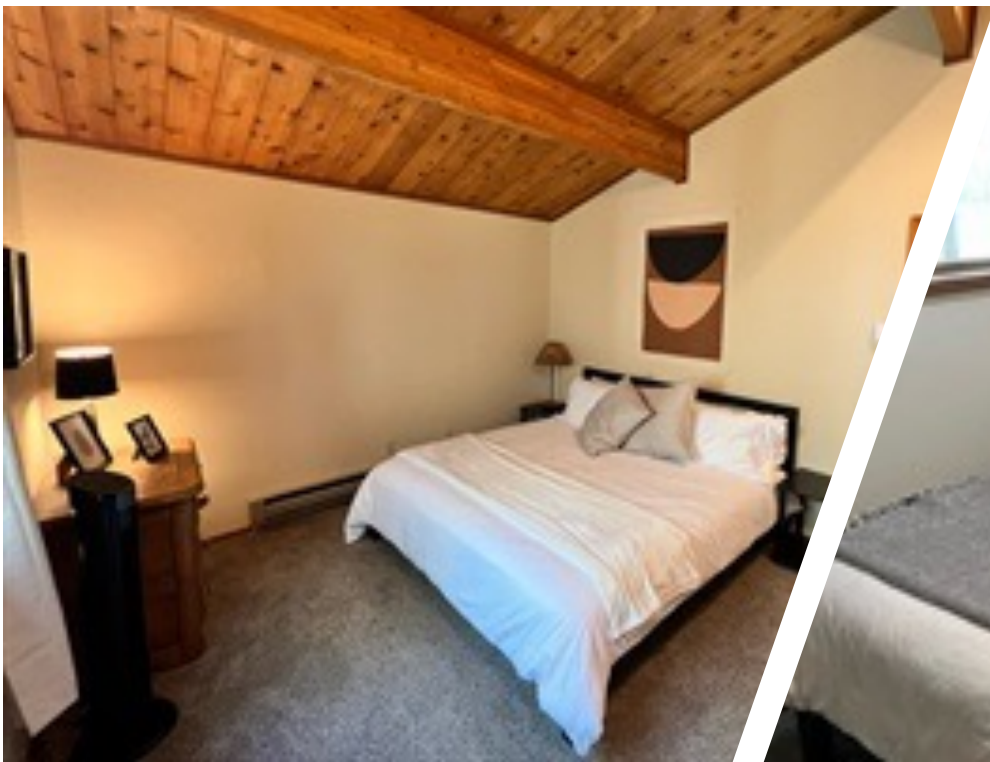


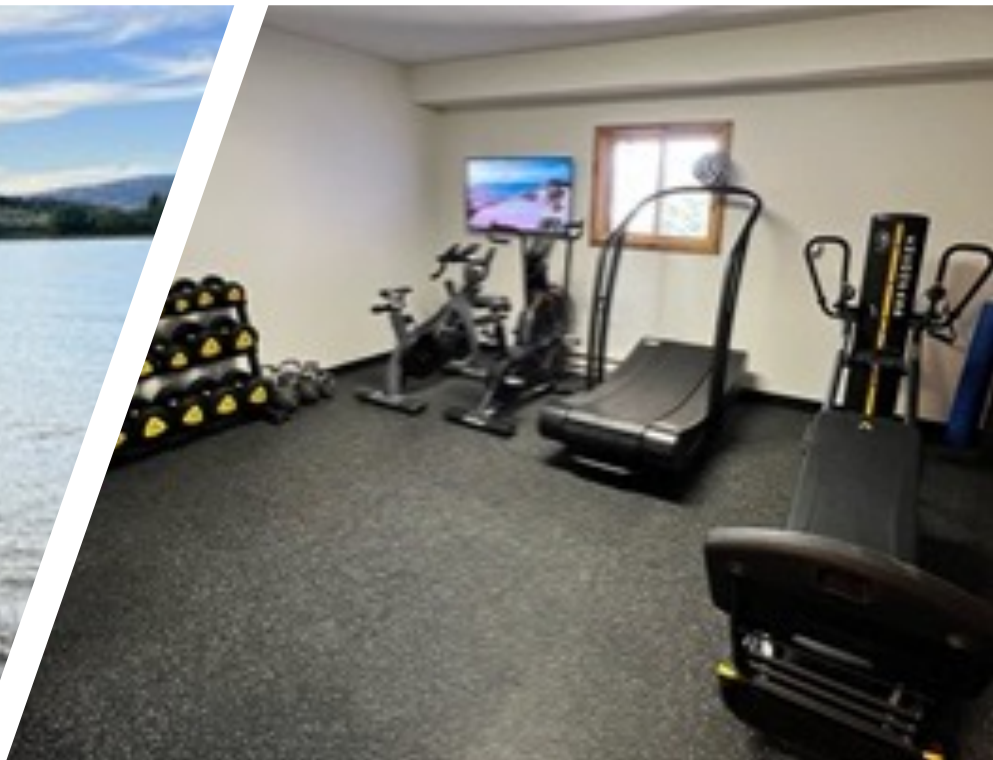


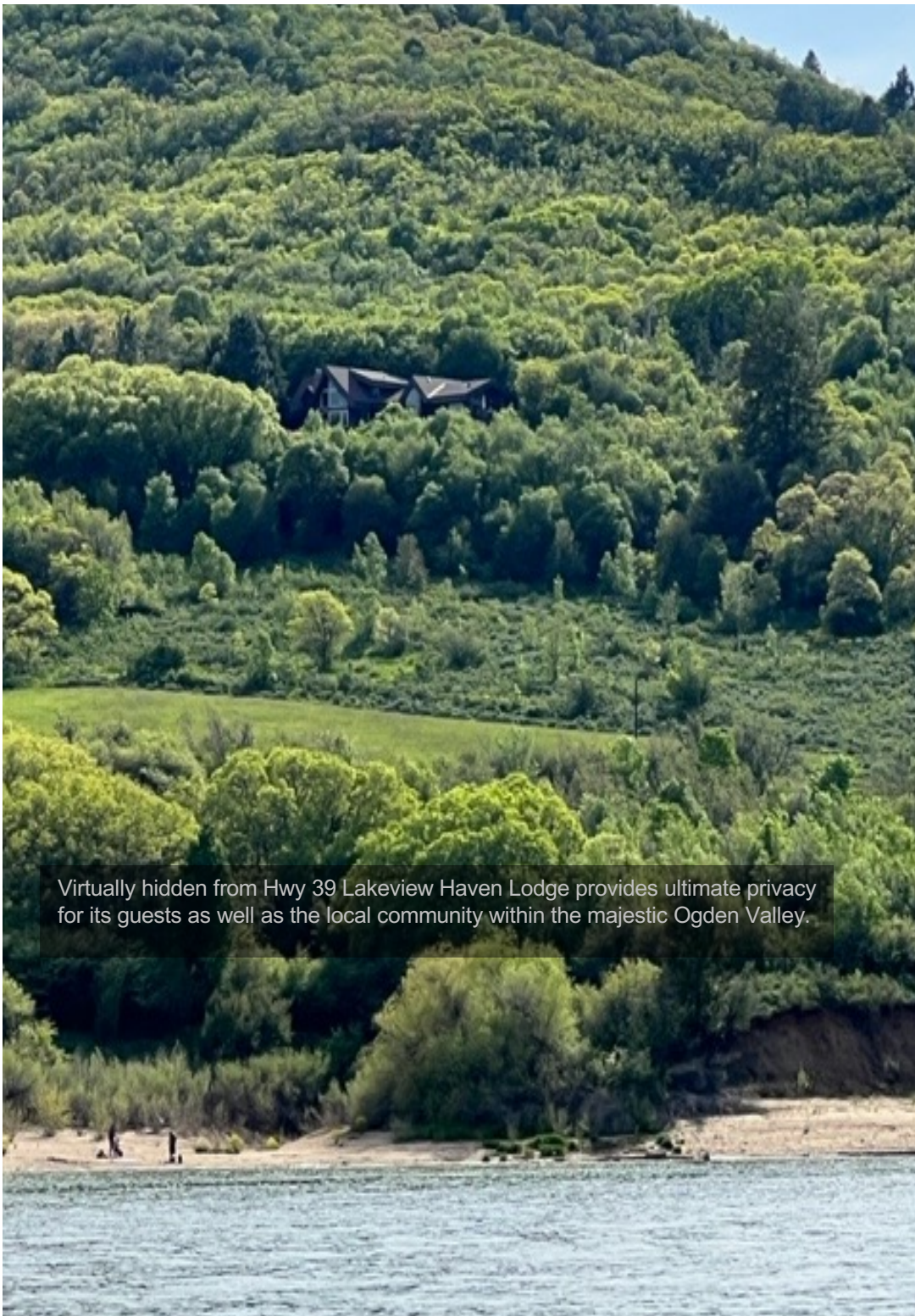












Virtually hidden from Hwy 39 Lakeview Haven Lodge provides ultimate privacy for its guests as well as the local community within the majestic Ogden Valley.



Lakeview Haven Lodge