

# CARDON SUBDIVISION

## SITE PLAN

### WEBER COUNTY, UTAH

#### JANUARY 2014

**NOTES:**  
 THIS AREA HAS HISTORICALLY RECEIVED SHEET FLOW WATER FROM STORM WATER AND NEARBY CANAL. IT IS RECOMMENDED THAT ALL LIVING SPACE IS AT OR ABOVE GRADE.  
 AREA AROUND HOME SHOULD BE GRADED AT A MINIMUM OF 2% AWAY FROM BUILDING.  
 ALL WORK WITHIN U.D.O.T. RIGHT-OF-WAY SHALL REQUIRE AND BE COMPLETED UNDER A SEPARATE U.D.O.T. PERMIT.  
 A CONTRACTOR PROVIDED STATE STORM WATER POLLUTION PREVENTION PLAN (SWPPP) IS REQUIRED.  
 EXCAVATED MATERIAL IS TO BE TEMPORARILY CONTAINED WITHIN THE BOUNDARIES OF LOT 1 OR PERMANENTLY REMOVED FROM THE SITE.  
 CONTRACTOR IS TO BE RESPONSIBLE IN IMPLEMENTING SWPPP PROCEDURES AND INSPECTIONS.  
 PORTABLE RESTROOM FACILITIES SHALL BE LOCATING WITHIN LOT 1.  
 TOTAL AREA OF LAND DISTURBANCE IS 29,685 SQ. FT. OR 0.68 ACRES.

**APPROVED**  
**WEBER FIRE DISTRICT**  
 02/12/2014 8:41:20 AM

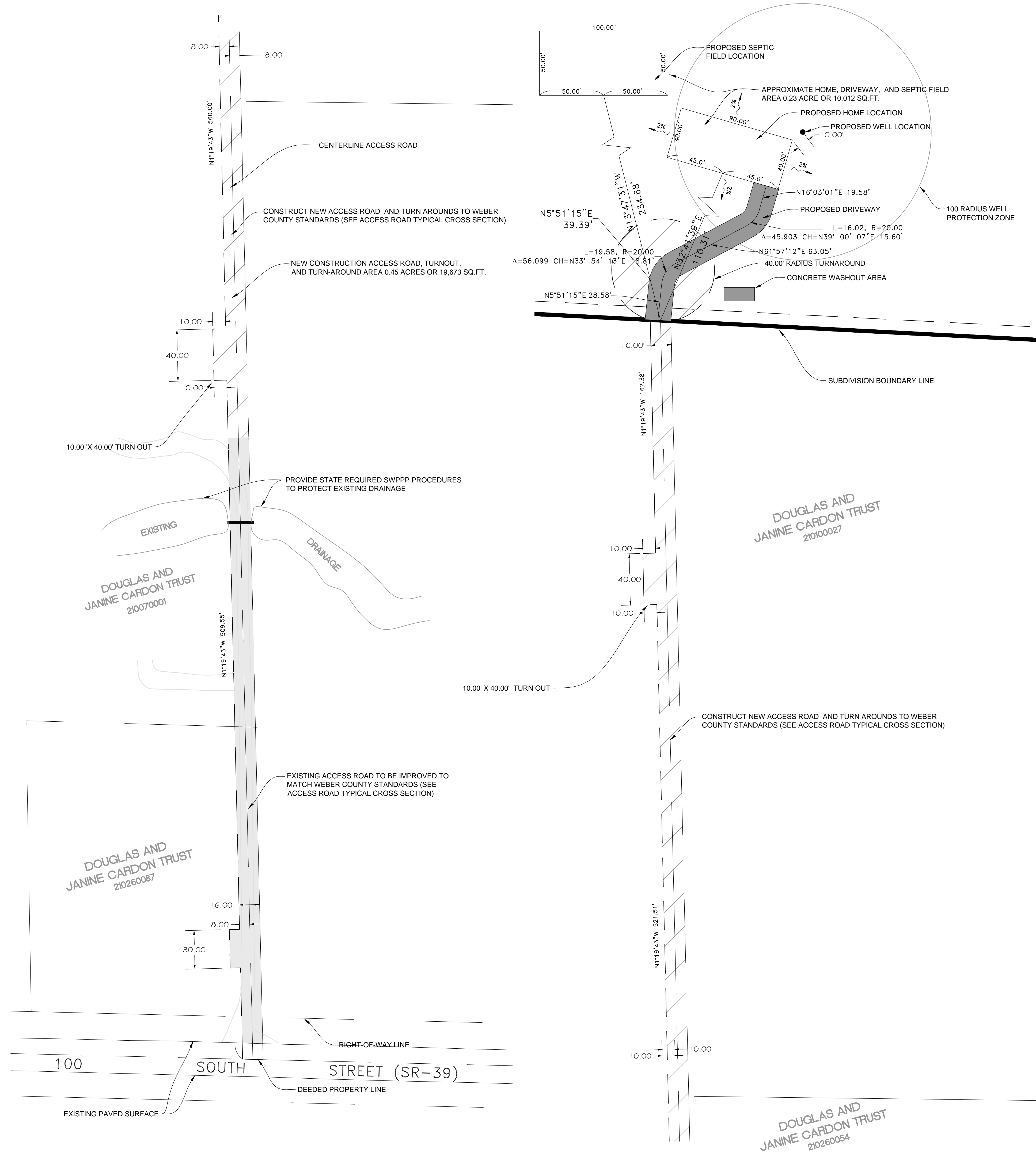
SCALE: 1" = 40'	DATE: 11/11/13
DESIGN: KHW	DRAWN: KHW
CHECKED: ###	DWG: R:\0312 - CARDON, MATY, 1 LOT SURV SURVEY\DWG\CARDON SUB.DWG

REVISIONS	DESCRIPTION

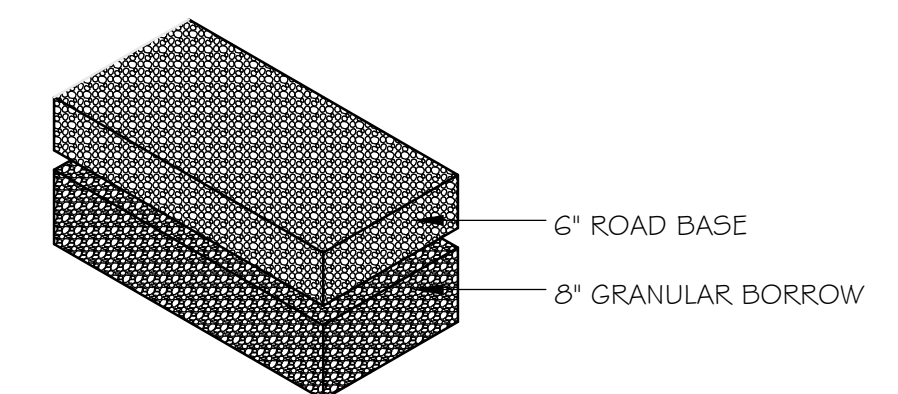
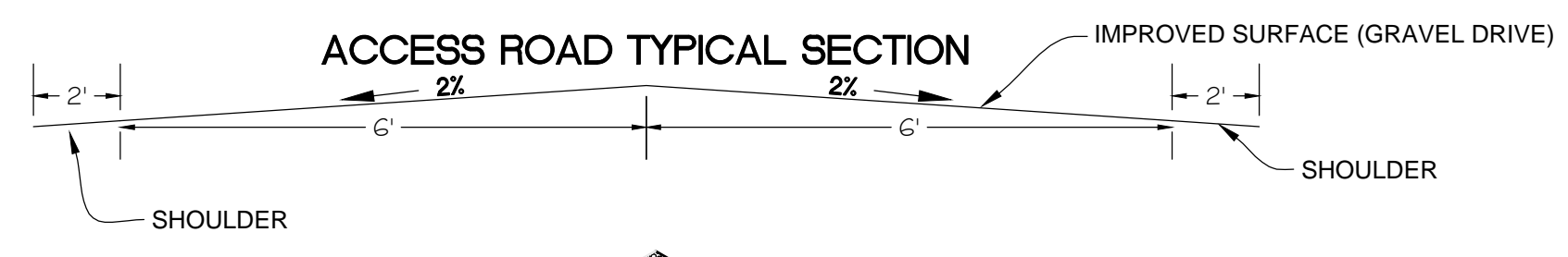
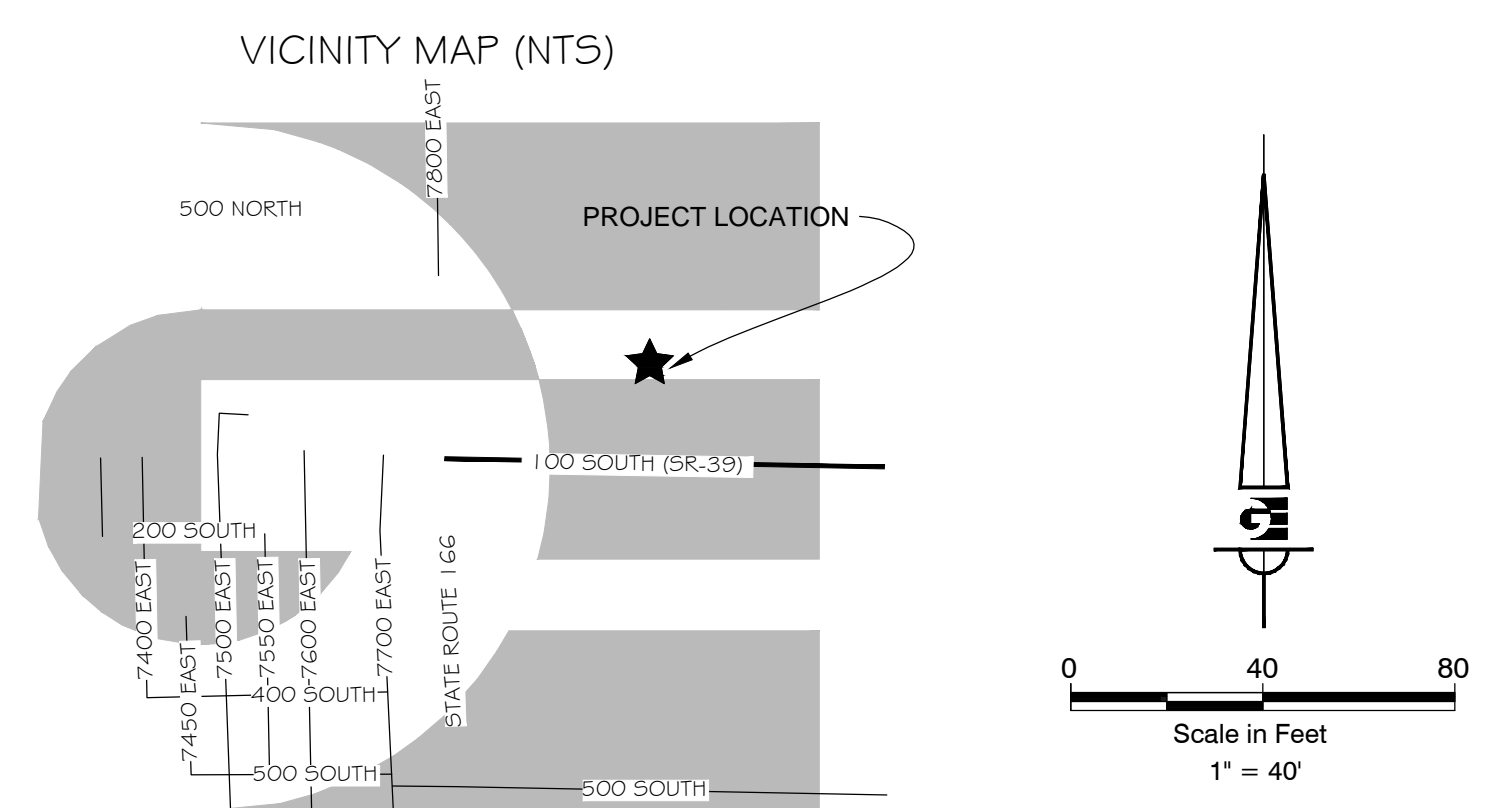
**SITE PLAN**  
**CARDON SUBDIVISION**  
**NOVEMBER 2013**  
**WEBER COUNTY, UTAH**

5875 S. Adams Ave.  
 Parkview, Suite 200  
 Ogden, Utah 84405  
 (801) 476-0202

**Gardner Engineering**



- STREET MAINTENANCE NOTES:**
- REMOVE ALL SEDIMENT DEPOSITED ON PAVED ROADWAYS IMMEDIATELY.
  - SWEEP PAVED AREAS THAT RECEIVE CONSTRUCTION TRAFFIC WHENEVER SEDIMENT BECOMES VISIBLE.
  - PAVEMENT WASHING WITH WATER IS PROHIBITED IF IT RESULTS IN A DISCHARGE TO THE STORM DRAIN SYSTEM.
- NOTE:**  
 CONTRACTOR SHALL COMPLETE AND SUBMIT A STATE NOTICE OF INTENT (NOI) AND A STORM WATER POLLUTION PREVENTION PLAN BOOKLET



**DEVELOPER:**  
 DOUGLAS J. & JANINE G.  
 CARDON TRUST  
 7948 EAST 100 SOUTH  
 HUNTSVILLE, UTAH  
 84310