

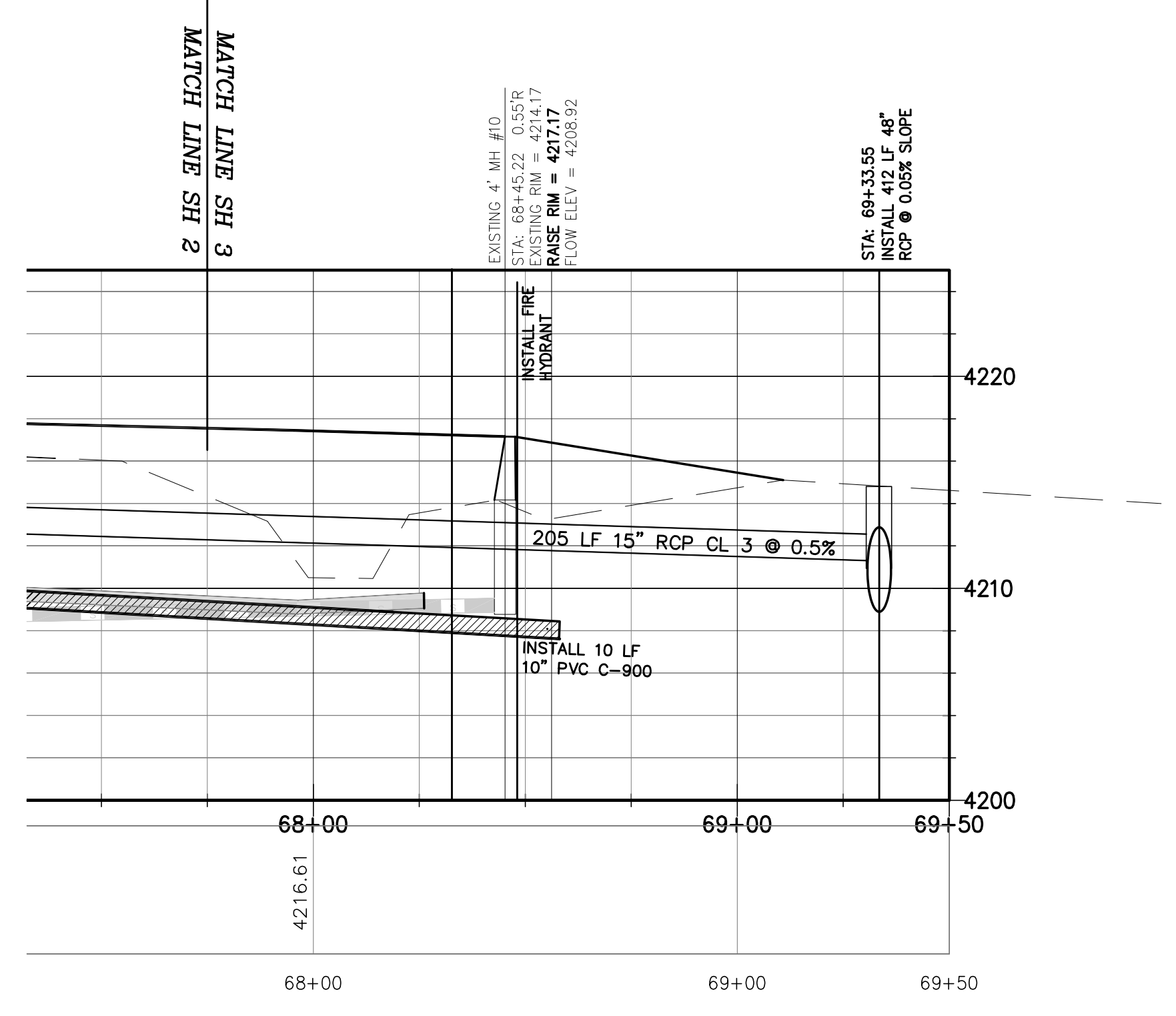
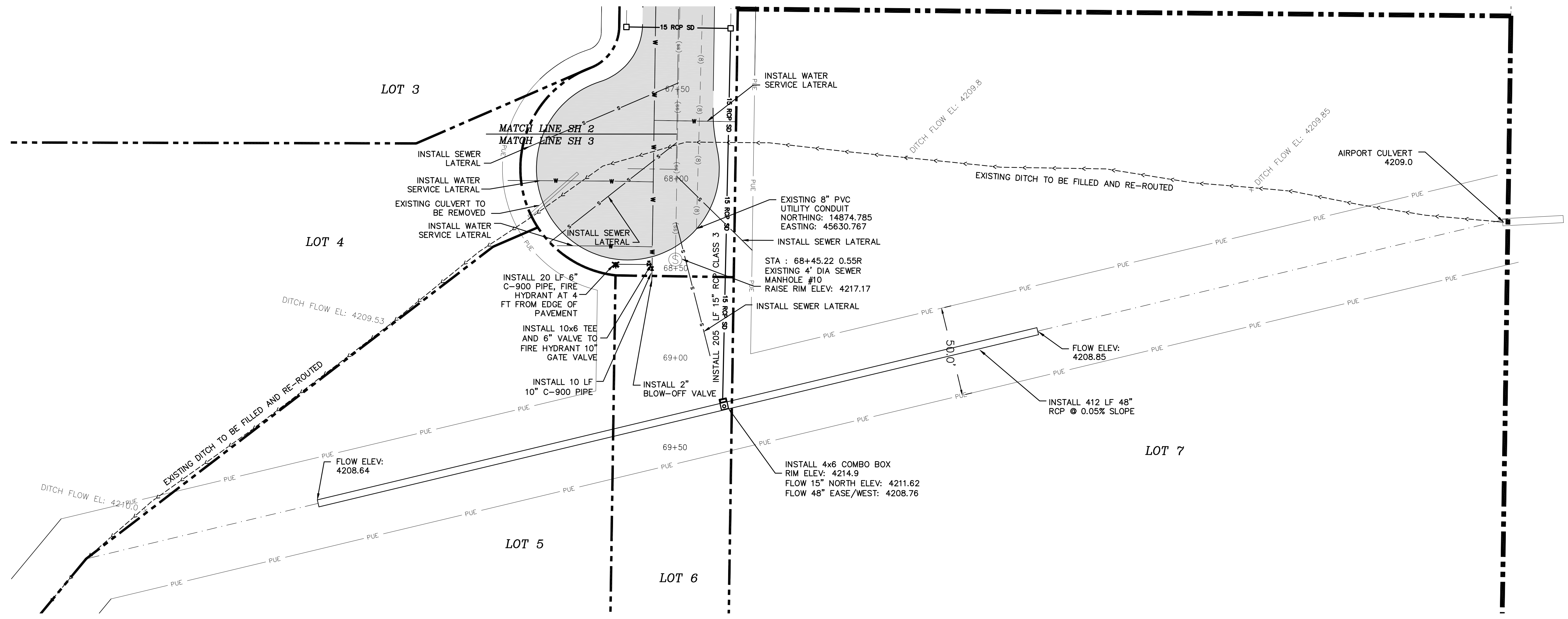


HOWARD INDUSTRIAL
 9175 WEST STREET (PRIVATE ROAD)
 PLAN AND PROFILE STA: 67+75 TO 69+50
 WEBER COUNTY, UTAH

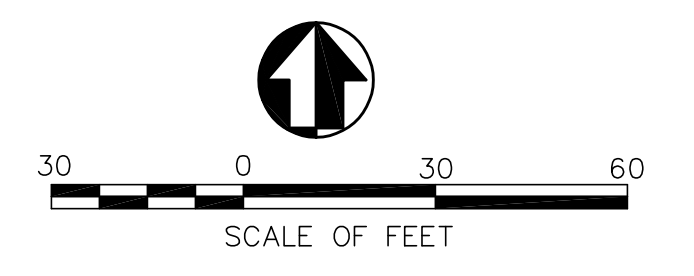
TWIN PEAKS
 Engineering & Land Surveying
 2264 NORTH 1450 EAST LEHI, UTAH 84043
 (801) 450-3511

DWG DATE: April 2023
 PLOT DATE: 27 April 2023

SHEET
 3



NOTE: WATER SERVICE LATERAL SHOWN REPRESENTS ONE 6" FIRE SPRINKLER LINE AND ONE 1" DRINKING WATER LINE.



LEGEND

	29' 28" BOUNDARY CORNER & SECTION LINE
	32' 33" BOUNDARY CORNER & SECTION LINE
	= BOUNDARY LINE
	= RIGHT OF WAY LINE
	= ROW
	= ADJOINING PARCELS DEED LINES
	= EXTANT FENCE LINES
	= PRIVATE UTILITY AND DRAINAGE EASEMENT
	= ROAD CENTER LINE
	= EXISTING SEWER (ss) --- (ss)
	= EXISTING WATER (w) --- (w)
	= PROPOSED SEWER S --- S
	= PROPOSED WATERLINE W --- W
	= PROPOSED NEW ASPHALT