

PLANT SCHEDULE

PLANT	QTY	REMARKS
Aspen (Small) / 10' x 10'	15	15
Aspen (Medium) / 12' x 12'	10	10
Aspen (Large) / 14' x 14'	5	5
Aspen (Very Large) / 16' x 16'	3	3
Aspen (Mature) / 18' x 18'	2	2
Aspen (Giant) / 20' x 20'	1	1
Aspen (Super) / 22' x 22'	1	1
Aspen (Mega) / 24' x 24'	1	1
Aspen (Titan) / 26' x 26'	1	1
Aspen (Colossal) / 28' x 28'	1	1
Aspen (Immense) / 30' x 30'	1	1
Aspen (Monstrous) / 32' x 32'	1	1
Aspen (Gigantic) / 34' x 34'	1	1
Aspen (Enormous) / 36' x 36'	1	1
Aspen (Huge) / 38' x 38'	1	1
Aspen (Massive) / 40' x 40'	1	1
Aspen (Colossal) / 42' x 42'	1	1
Aspen (Immense) / 44' x 44'	1	1
Aspen (Monstrous) / 46' x 46'	1	1
Aspen (Gigantic) / 48' x 48'	1	1
Aspen (Enormous) / 50' x 50'	1	1
Aspen (Huge) / 52' x 52'	1	1
Aspen (Massive) / 54' x 54'	1	1
Aspen (Colossal) / 56' x 56'	1	1
Aspen (Immense) / 58' x 58'	1	1
Aspen (Monstrous) / 60' x 60'	1	1
Aspen (Gigantic) / 62' x 62'	1	1
Aspen (Enormous) / 64' x 64'	1	1
Aspen (Huge) / 66' x 66'	1	1
Aspen (Massive) / 68' x 68'	1	1
Aspen (Colossal) / 70' x 70'	1	1
Aspen (Immense) / 72' x 72'	1	1
Aspen (Monstrous) / 74' x 74'	1	1
Aspen (Gigantic) / 76' x 76'	1	1
Aspen (Enormous) / 78' x 78'	1	1
Aspen (Huge) / 80' x 80'	1	1
Aspen (Massive) / 82' x 82'	1	1
Aspen (Colossal) / 84' x 84'	1	1
Aspen (Immense) / 86' x 86'	1	1
Aspen (Monstrous) / 88' x 88'	1	1
Aspen (Gigantic) / 90' x 90'	1	1
Aspen (Enormous) / 92' x 92'	1	1
Aspen (Huge) / 94' x 94'	1	1
Aspen (Massive) / 96' x 96'	1	1
Aspen (Colossal) / 98' x 98'	1	1
Aspen (Immense) / 100' x 100'	1	1

AMENITIES SCHEDULE

AMENITY	QTY	REMARKS
Aspen (Small) / 10' x 10'	15	15
Aspen (Medium) / 12' x 12'	10	10
Aspen (Large) / 14' x 14'	5	5
Aspen (Very Large) / 16' x 16'	3	3
Aspen (Mature) / 18' x 18'	2	2
Aspen (Giant) / 20' x 20'	1	1
Aspen (Super) / 22' x 22'	1	1
Aspen (Mega) / 24' x 24'	1	1
Aspen (Titan) / 26' x 26'	1	1
Aspen (Colossal) / 28' x 28'	1	1
Aspen (Immense) / 30' x 30'	1	1
Aspen (Monstrous) / 32' x 32'	1	1
Aspen (Gigantic) / 34' x 34'	1	1
Aspen (Enormous) / 36' x 36'	1	1
Aspen (Huge) / 38' x 38'	1	1
Aspen (Massive) / 40' x 40'	1	1
Aspen (Colossal) / 42' x 42'	1	1
Aspen (Immense) / 44' x 44'	1	1
Aspen (Monstrous) / 46' x 46'	1	1
Aspen (Gigantic) / 48' x 48'	1	1
Aspen (Enormous) / 50' x 50'	1	1
Aspen (Huge) / 52' x 52'	1	1
Aspen (Massive) / 54' x 54'	1	1
Aspen (Colossal) / 56' x 56'	1	1
Aspen (Immense) / 58' x 58'	1	1
Aspen (Monstrous) / 60' x 60'	1	1
Aspen (Gigantic) / 62' x 62'	1	1
Aspen (Enormous) / 64' x 64'	1	1
Aspen (Huge) / 66' x 66'	1	1
Aspen (Massive) / 68' x 68'	1	1
Aspen (Colossal) / 70' x 70'	1	1
Aspen (Immense) / 72' x 72'	1	1
Aspen (Monstrous) / 74' x 74'	1	1
Aspen (Gigantic) / 76' x 76'	1	1
Aspen (Enormous) / 78' x 78'	1	1
Aspen (Huge) / 80' x 80'	1	1
Aspen (Massive) / 82' x 82'	1	1
Aspen (Colossal) / 84' x 84'	1	1
Aspen (Immense) / 86' x 86'	1	1
Aspen (Monstrous) / 88' x 88'	1	1
Aspen (Gigantic) / 90' x 90'	1	1
Aspen (Enormous) / 92' x 92'	1	1
Aspen (Huge) / 94' x 94'	1	1
Aspen (Massive) / 96' x 96'	1	1
Aspen (Colossal) / 98' x 98'	1	1
Aspen (Immense) / 100' x 100'	1	1

LANDSCAPE CALCULATIONS SUMMARY

TOTAL PROJECT AREA (REFER TO CIVIL PLANS)
 136,522 SF
 TOTAL ON SITE LANDSCAPING PROVIDED
 40,973 SF (30.01% OF PROJECT SITE)
 TOTAL OF LANDSCAPE AREA IN TURF GRASS
 8,324 SF (20.32% OF LANDSCAPE - 50% MAX. ALLOWED)
 1,518 SF (3.70% FOR OTHER NON DROUGHT-TOLERANT LANDSCAPE)
 TOTAL AREA IN DROUGHT-TOLERANT LANDSCAPING
 31,131 SF (75.98% OF TOTAL)
 REQUIRED FRONTAGE TREES ALONG HIGHWAY 39
 15-26 TREES (763 FT / 50)
 PROVIDED FRONTAGE TREES ALONG HIGHWAY 39
 27 TREES (INCLUDING EXISTING TREES)

GENERAL NOTES:

- SEE SHEETS L-1 AND L-2 FOR ENLARGED LANDSCAPE PLANS
- TREES ILLUSTRATED AT 75% OF MATURE GROWTH CANOPY SIZE
- PROPOSED TREES HAVE BEEN LOCATED TO AVOID UTILITIES, REFER TO CIVIL PLANS AND VERIFY IN FIELD BEFORE PLANTING.

REV. NO.	COMMENT	DATE

UNLICENSED
WALTER MATTIA
 No. 106248
 1/25/14
 STATE OF UTAH

SUNRISE ENGINEERING
 12227 S. BUSINESS PARK DR, SUITE 220
 DRAPER, UTAH 84020
 TEL 801.523.0150 • FAX 801.523.0990
 www.sunrise-eng.com

OGDEN CITY

**WATER TREATMENT PLANT RECONSTRUCTION
 LANDSCAPE PLAN - OVERALL**

SET NO.	DESIGNED	DRAWN	CHECKED	SHEET NO.
04655	DCM	DCM	DCM	48 of 244

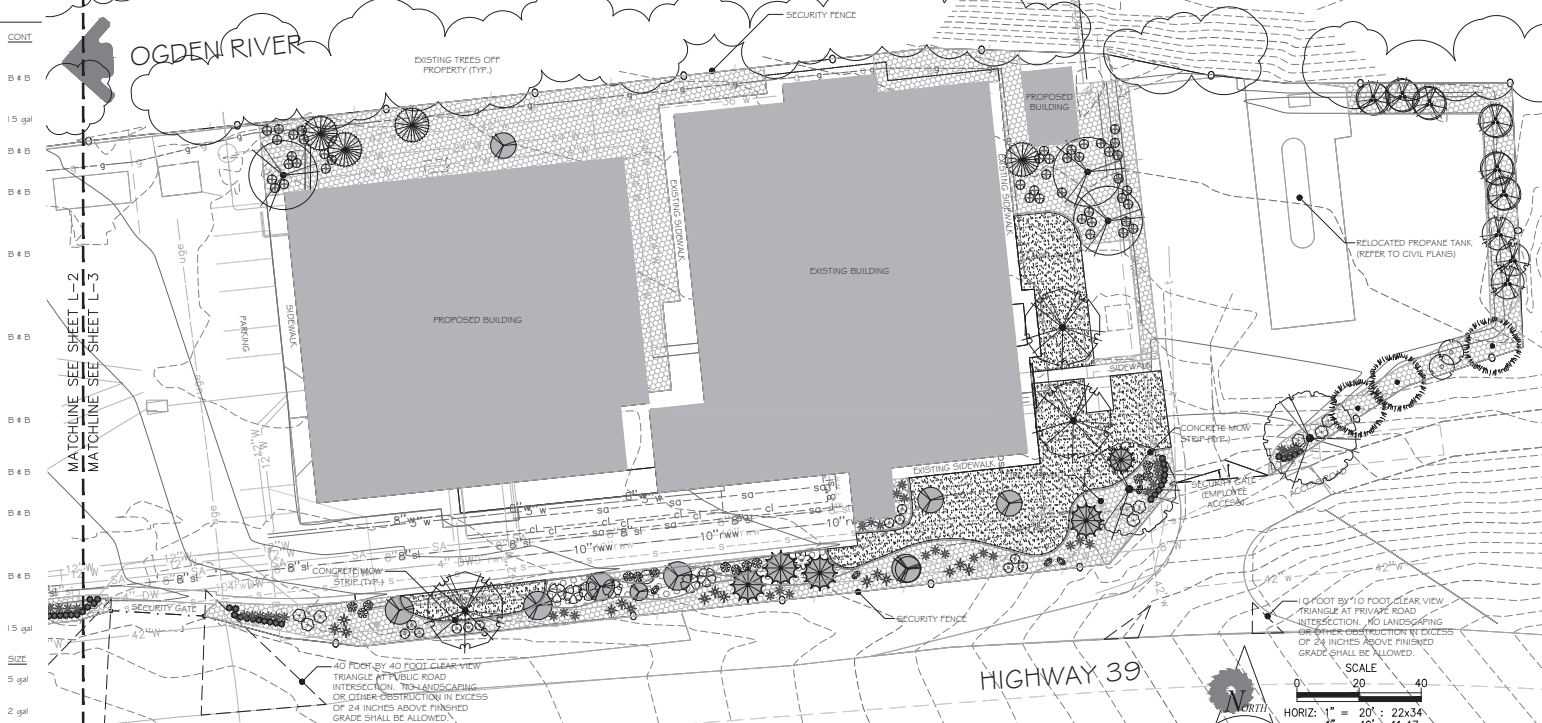
L-1



Foresite
 Design Group, L.C.
 11801 Arroyo Grande Drive
 FSD-031-LS January 25, 2014

PLANT SCHEDULE

TREES	BOTANICAL NAME / COMMON NAME	CONT
	<i>Abies concolor</i> / White Fir Hydro Zone 2 - Evergreen	B 4 B
	<i>Acer ginnala</i> 'Flame' / Flame Amur Maple Hydro Zone 1	15 gal
	<i>Acer glabrum</i> / Rocky Mountain Maple Hydro Zone 1	B 4 B
	<i>Acer gresum</i> / Paperbark Maple Hydro Zone 3 - Matching Tree Canopies	B 4 B
	<i>Celtis occidentalis</i> / Common Hackberry Hydro Zone 0	B 4 B
	<i>Fraxinus pennsylvanica</i> 'Summit' / Summit Ash Hydro Zone 1-2	B 4 B
	<i>Gleditsia tinacanthos</i> inermis 'Shademaster' TM / Shademaster Locust Hydro Zone 1	B 4 B
	<i>Juniperus scopulorum</i> / Rocky Mountain Juniper Hydro Zone 0 - Evergreen	B 4 B
	<i>Picea pungens</i> glauca 'Hoopsii' / Hoopsii Blue Spruce Hydro Zone 3 - Evergreen	B 4 B
	<i>Pinus nigra</i> / Austrian Black Pine Hydro Zone 1 - Evergreen	B 4 B
	<i>Quercus gambelii</i> / Gambel Oak Hydro Zone 0	15 gal
SHRUBS	BOTANICAL NAME / COMMON NAME	SIZE
	<i>Amelanchier alnifolia</i> 'Regent' / Saskatoon Serviceberry Hydro Zone 0-1	5 gal
	<i>Berberis thunbergii</i> 'Bagatelle' / Bagatelle Red Barberry Hydro Zone 2	2 gal
	<i>Buxus microphylla</i> 'Winter Gem' / Globe Winter Gem Boxwood Hydro Zone 2 - Evergreen	5 gal
	<i>Caryopteris x clandonensis</i> 'Dark Knight' / Blue Mist Shrub Hydro Zone 2	5 gal
	<i>Eucymia alata</i> 'Compactus' / Compact Burning Bush Hydro Zone 2	5 gal
	<i>Juniperus horizontalis</i> 'Bar Harbor' / Bar Harbor Creeping Juniper Hydro Zone 1 - Evergreen	5 gal
	<i>Ligustrum vulgare</i> / Privet Hydro Zone 3	5 gal
	<i>Mahonia aquifolium</i> 'Compacta' / Compact Oregon Grape Hydro Zone 1 - Evergreen	5 gal
	<i>Physocarpus opulifolius</i> 'Summer Wine' / Summer Wine Ninebark Hydro Zone 2	5 gal
	<i>Potentilla fruticosa</i> 'Gold Drop' / Gold Drop Potentilla Hydro Zone 1	5 gal
	<i>Prunus x celtica</i> / Purple Leaf Sand Cherry Hydro Zone 2	5 gal
	<i>Rhus aromatica</i> 'Gro-Low' / Gro-Low Fragrant Sumac Hydro Zone 1	5 gal
	<i>Rhus trilobata</i> / Skunkbush Sumac Hydro Zone 0	5 gal
	<i>Ribes alpinum</i> / Alpine Currant Hydro Zone 1	5 gal
	<i>Spiraea japonica</i> 'Neon Flash' / Neon Flash Spiraea Hydro Zone 3	5 gal
	<i>Spiraea x bumalda</i> / Bumald Spiraea Hydro Zone 2	5 gal
ANNUALS/PERENNIALS	BOTANICAL NAME / COMMON NAME	SIZE
	<i>Artemisia schmidtiana</i> 'Silver Mound' / Silver Mound Artemisia Hydro Zone 2	1 gal
	<i>Bergenia cordifolia</i> / Heartleaf Bergenia Hydro Zone 2	2 gal
	<i>Gallardia x grandiflora</i> 'Arizona Sun' / Arizona Sun Blanket Flower Hydro Zone 1	1 gal



SIZE	BOTANICAL NAME / COMMON NAME	CONT	FIELD	FIELD3	SPACING
1 gal	<i>Gallardia x grandiflora</i> 'Burgundy' / Burgundy Blanketflower Hydro Zone 1	1 gal			
1 gal	<i>Thymus praecox</i> / Mother of Thyme Hydro Zone 2 - 12" O.C.	flat	12" o.c.		
1 gal	<i>Geranium cinereum</i> subcaulescens 'Splendens' / Geranium Hydro Zone 3	1 gal			
1 gal	<i>Thymus pseudolanuginosus</i> / Woolly Thyme Hydro Zone 2 - O.C.	flat	12" o.c.		
1 gal	<i>Geranium cinereum</i> 'Ballena' / Ballena Hardy Geranium Hydro Zone 3	1 gal			
1 gal	<i>Memecalis x 'Pardon Me'</i> / Pardon Me Daylily Hydro Zone 2	1 gal			
1 gal	<i>Vinca minor</i> / Common Periwinkle Hydro Zone 2 - Evergreen - 12" O.C.	flat	12" o.c.		
5 gal	<i>Rocky Mountain Wildflower Mix</i> by Granite Seed Hydro Zone 0 - Apply Per Manufacturers Specifications	seed			

SYMBOL	DESCRIPTION	QTY
	GRASSES <i>Calamagrostis x acutiflora</i> 'Karl Foerster' / Feather Reed Grass Hydro Zone 2	5 gal
	<i>Eranthis ravennae</i> / Ravenna Grass Hydro Zone 2	5 gal
	<i>Festuca ovina glauca</i> / Blue Sheep Fescue Hydro Zone 1	2 gal
	<i>Miscanthus sinensis</i> 'Gracillimus' / Maiden Grass Hydro Zone 1	5 gal
	<i>Pennisetum alopecuroides</i> 'Hameli' / Hameli Dwarf Fountain Grass Hydro Zone 2	5 gal
	<i>Pennisetum alopecuroides</i> 'Little Bunny' / Little Bunny Fountain Grass Hydro Zone 2	5 gal
	<i>Pennisetum alopecuroides</i> 'Rubrum' / Purple Fountain Grass Hydro Zone 2	5 gal
	<i>Schizanthum scoparium</i> 'Blaze' / Blaze Little Bluestem Hydro Zone 0	5 gal
	GROUND COVERS <i>Arctostaphylos uva-ursi</i> / Kinnikinnick Hydro Zone 2 - Evergreen - 12" O.C.	flat
	<i>Gallardia anastata</i> 'Arizona Sun' / Arizona Sun Blanket Flower Hydro Zone 0 - 12" O.C.	flat
	<i>Galium odoratum</i> / Sweet Woodruff Hydro Zone 3 - 12" O.C.	flat
	AMENITIES SCHEDULE Landscape Forms S1 4" / Straight, Backless 4-Seat, No Arms, Freestanding and to be approved by owner.	5
	EXISTING TREES OF VARIOUS SIZES AND SPECIES LOCATED ON ADJACENT PROPERTY WHICH ARE TO REMAIN. APPROXIMATE LOCATION AND CANOPY SIZE DETERMINED FROM GOOGLE EARTH AERIAL IMAGE.	
	EXISTING TREES OF VARIOUS SIZES AND SPECIES LOCATED ON THE PROPERTY AND ARE TO REMAIN. LOCATION DETERMINED BY SITE SURVEY AND APPROXIMATE CANOPY SIZE DETERMINED FROM GOOGLE EARTH AERIAL IMAGE. ALL OTHER EXISTING TREES ARE TO BE REMOVED. PROTECT ON-SITE EXISTING TREES DURING CONSTRUCTION WITH CONSTRUCTION FENCING AT THE DRIP LINE OF THE TREES.	
	TURF GRASS / MULCHES / ROCK 6-12 CT LANDSCAPE BOULDER (BROWNS, REDS 4 GRAYS)	39 BOULDERS
	TURF GRASS BLEND - REFER TO NOTES AND DETAILS SHEET	8,324 S.F.
	4" DEPTH MINIMUM OF 4" MINUS COLORED COBBLE ROCK (BROWNS, REDS 4 GRAYS) 1,900 S.F. OVER DEWITT PRO 5 WEED BARRIER BLENDED WITH 3/4" COLORED CRUSHED	
	4" DEPTH OF 1" TO 2" OF COLORED CRUSHED ROCK (BROWNS, REDS 4 GRAYS) OVER DEWITT PRO 5 WEED BARRIER	2,678 S.F.
	4" DEPTH OF 3/4" OF COLORED CRUSHED ROCK (BROWNS, REDS 4 GRAYS) OVER DEWITT PRO 5 WEED BARRIER	17,956 S.F.



foresite
Design Group, L.C.

PLANNING, LANDSCAPE ARCHITECTURE & SITE DESIGN SERVICES
11800 Arroyo Canyon Drive (801) 943-7668
2000 South 1000 East (801) 943-7668
FSD-031-LS January 25, 2014

REV. NO.	COMMENT	DATE

SUNRISE ENGINEERING

12227 S. BUSINESS PARK DR, SUITE 220
DRAPER, UTAH 84020
TEL 801.523.0100 • FAX 801.523.0990
www.sunrise-eng.com

OGDEN CITY
WATER TREATMENT PLANT RECONST.
LANDSCAPE PLAN

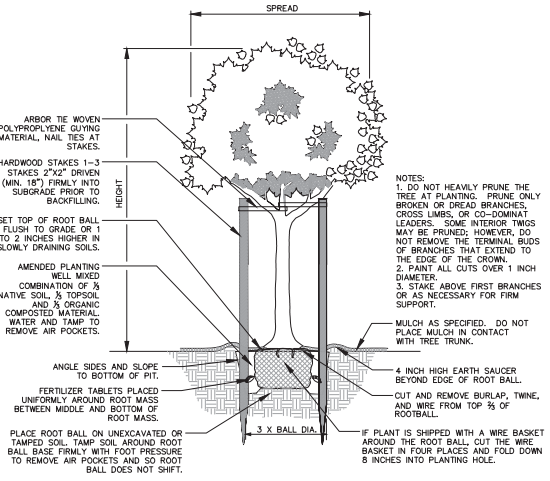
SHEET NO.	DESIGNED	DRAWN	CHECKED	SHEET NO.
04655	DCM	DCM	DCM	50 of 244

L-3

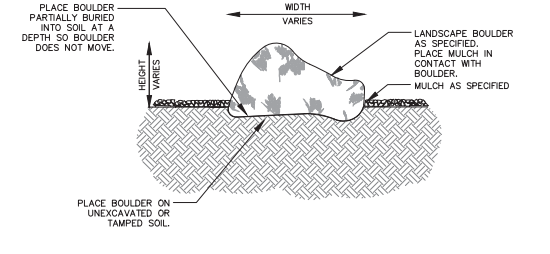
PLANTING NOTES:

- LANDSCAPE BIDS MUST BE IN A DETAILED UNIT PRICE FORMAT SHOWING COST BREAKDOWN OF ALL LANDSCAPE ELEMENTS. ANY ELEMENT MAY BE ADDED OR DELETED BY THE LANDSCAPE ARCHITECT OR OWNER. CONTRACTOR COMPENSATION WILL BE ADJUSTED ACCORDING TO THE UNIT PRICE BIDS. ANY SUBSTITUTION MUST BE BY LANDSCAPE ARCHITECT APPROVAL. LANDSCAPE ARCHITECT OR OWNER WITHOUT JUSTIFICATION MAY DISALLOW BIDS AND SELECT CONTRACTOR REGARDLESS OF BID FIGURES. THE SELECTED CONTRACTOR MUST CONTACT THE OWNER'S REPRESENTATIVE FOR REPRESENTATIVE BEFORE BEGINNING CONSTRUCTION TO SCHEDULE A PRE CONSTRUCTION MEETING. CONTRACTOR OR SUBCONTRACTORS PARTICIPATION IN CONSTRUCTION OF THIS PROJECT MUST BE LICENSED BY THE STATE OF UTAH FOR THE TYPE OF WORK BEING PERFORMED.
- CODES, LAWS, REGULATIONS, AND PERMITS BY FEDERAL, STATE, COUNTY AND CITY AGENCIES FOR DESIGN CONCEPT, MATERIALS AND WORKMANSHIP MUST BE RESEARCHED AND SATISFIED BY THE CONTRACTOR. REPORT ANY PROBLEMS OR REQUIREMENTS TO THE LANDSCAPE ARCHITECT. THE CONTRACTOR MUST VERIFY THE REGULATIONS FOR AND SECURE ANY PERMITS BEFORE BEGINNING CONSTRUCTION. THE COST FOR THE PERMIT FEES MAY BE SUBMITTED TO THE OWNER FOR REIMBURSEMENT. CALL BLUE STAKES AND REFER TO DRAINAGE AND CIVIL PLANS BEFORE ANY TRENCHING OR EXCAVATION.
- CONSTRUCTION SAFETY AND CLEANUP MUST MEET OSHA STANDARDS AT ALL TIMES. ALL CONTRACTORS MUST HAVE ADEQUATE LIABILITY, PERSONNEL INJURY AND PROPERTY DAMAGE INSURANCE. CLEAN UP MUST BE PERFORMED DAILY, AND ALL HARDSCAPE ELEMENTS MUST BE WASHED FREE OF DIRT AND MUD ON FINAL CLEAN UP. CONSTRUCTION MUST OCCUR IN A TIMELY MANNER.
- LANDSCAPE PLANS AND DETAIL DRAWINGS ARE SCHEMATIC ONLY. DISCREPANCIES MAY EXIST, INCLUDING BUT NOT LIMITED TO BUILDING LOCATION, PROPERTY LINES, ANY DIMENSIONS SPECIFIED OR IMPLIED. THE CONTRACTOR WILL BE REQUIRED TO ADJUST PLANS AS NECESSARY TO RETAIN CONCEPT INTEGRITY. CONTACT LANDSCAPE ARCHITECT IF DISCREPANCIES EXIST.
- PLANT MATERIAL EXCAVATION, CALL BLUE STAKE AND MAKE REFERENCE TO DRAINAGE AND CIVIL PLANS BEFORE EXCAVATION FOR PLANT MATERIAL. ALL HOLES MUST ALLOW FOR A MINIMUM OF TWELVE (12) INCHES OF SPECIFIED PLANTING MIX BACKFILL MATERIAL ON ALL SIDES OF ROOT BALL FOR SHRUBS, AND 3X BALL DIAMETER FOR TREES.
- PLANT MATERIAL BACKFILL MUST BE A WELL MIXED COMBINATION OF 1/3 NATIVE SOIL, 1/3 TOPSOIL, AND 1/3 ORGANIC COMPOSTED MATERIAL. DEEP WATER ALL PLANT MATERIAL IMMEDIATELY AFTER PLANTING. ADD BACKFILL MATERIAL TO DEPRESSIONS AS NECESSARY.
- SOIL AMENDMENTS SHALL INCLUDE COMPOSTED ORGANIC MATERIAL TO BE ADDED AT A RATE OF THREE CUBIC YARDS PER 1,000 SQUARE FEET, TILL INTO THE SUBGRADE SOIL PRIOR TO PLACING TOPSOIL. TILL AMENDMENTS IN TO A DEPTH OF 6". ALL SOD AREAS SHALL HAVE THE SOIL AMENDED.
- TOP SOIL MUST BE A PREMIUM QUALITY DARK SANDY LOAM, FREE OF ROCKS, CLODS, ROOTS, AND PLANT MATTER. THE TOPSOIL SHALL BE EVENLY SPREAD AND SMOOTH GRADED ON A CAREFULLY PREPARED AMENDED SUBGRADE. TOPSOIL SHALL BE SPREAD TO A DEPTH OF FIVE INCHES (5") IN ALL SOD AND SHRUB AREAS.
- SOD MUST BE PREMIUM QUALITY, ULTRA GREEN, EVENLY CUT, ESTABLISHED, HEALTHY, WEED AND DISEASE FREE, AND FROM AN APPROVED SOURCE. SOD MUST BE DELIVERED AND LAID IMMEDIATELY AFTER CUTTING. SOD MUST BE LAID WITH NO GAPS BETWEEN PIECES ON A CAREFULLY PREPARED TOPSOIL LAYER. THE LAID SOD MUST BE IMMEDIATELY WATERED AFTER INSTALLATION. ANY BURNED AREAS WILL REQUIRE REPLACEMENT. ADJUST SPRINKLER SYSTEM TO ASSURE HEALTHY GREEN SURVIVAL OF THE SOD WITHOUT WATER WASTE. TURF GRASS BLEND - 10% BLUESTAR KENTUCKY BLUEGRASS, 19% MARQUEE KENTUCKY BLUEGRASS, 17% NEWPORT KENTUCKY BLUEGRASS, 17% TOUCHDOWN KENTUCKY BLUEGRASS, 16% APM PERENNIAL RYEGRASS, 13% ACCENT PERENNIAL RYEGRASS AT A RATE OF 220 LBS. PER ACRE.

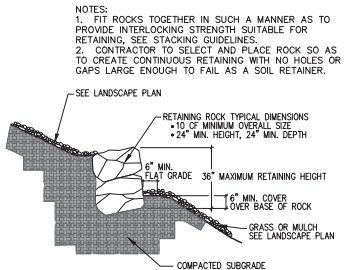
- MULCH OVER DEWITT PRO 5 WEED BARRIER WILL BE REQUIRED IN ALL LANDSCAPE BEDS FOR SHRUBS, PERENNIALS, AND ANNUALS. SEE PLANS FOR MULCH TYPES. MULCH SHALL BE EVENLY SPREAD ON A CAREFULLY PREPARED GRADE TO THE MINIMUM NOTED DEPTH. THE TOP OF ALL AREAS OF MULCH SHALL BE AT THE GRADE OF THE ADJACENT CURB, WALK, OR EDGE OF PAVEMENT.
- FERTILIZER FOR SOD AREAS SHALL BE PELLETIZED, N-P-K AS APPROVED BY LANDSCAPE ARCHITECT FOR SEASONAL ADJUSTMENT. USE 20 LBS PER 5,000 SQUARE FEET OR AS PER MANUFACTURER'S SPECIFICATIONS. SPREAD EVENLY ON A CAREFULLY PREPARED TOPSOIL LAYER JUST PRIOR TO LAYING SOD.
- TREE STAKING AND GUYING SHALL BE ON AN AS NEEDED BASIS ONLY. THE CONTRACTOR SHALL DETERMINE STAKING NEEDS DEPENDENT ON THE SITE SOIL CONDITIONS. IT IS THE CONTRACTORS RESPONSIBILITY TO REMOVE GUYING AND STAKING IN A TIMELY MANNER ONCE STAKED TREES HAVE TAKEN ROOT. NO STAKING SHALL REMAIN BEYOND A REASONABLE TIME FOR ROOT PENETRATION AND STABILIZATION.
- TREE WRAPPING MAY BE USED TO PROTECT YOUNG TREES FROM WINTER DAMAGE. TREE WRAPS SHALL ONLY BE INSTALLED IN THE FALL. IF THE CONTRACTOR INSTALLS WRAPS FOR TREE PROTECTION IT SHALL BE THE CONTRACTORS RESPONSIBILITY TO PROMPTLY REMOVE WRAPS THE FOLLOWING SPRING.
- LANDSCAPE MAINTENANCE MUST BE PERFORMED BY THE LANDSCAPE CONTRACTOR DURING ESTABLISHMENT (30 DAYS AFTER FINAL ACCEPTANCE OF ENTIRE PROJECT). RESPONSIBILITIES INCLUDE WEED CONTROL AND MOWING. NOTIFY OWNER AND CONSTRUCTION REPRESENTATIVE WHEN ESTABLISHMENT PERIOD HAS ENDED TO INSURE ONGOING MAINTENANCE. THE OWNER IS RESPONSIBLE FOR LANDSCAPE MAINTENANCE AND UPKEEP ONCE ESTABLISHMENT PERIOD HAS EXPIRED.
- ALL PLANT MATERIAL AND LANDSCAPE ELEMENTS WILL BE GUARANTEED FOR ONE YEAR AFTER FINAL ACCEPTANCE. ANY ITEMS THAT ARE NOT FIRST CLASS PREMIUM QUALITY WILL BE REPLACED BY THE CONTRACTOR AT NO COST TO THE OWNER. ANY PLANT MATERIAL THAT IS NOT PREMIUM QUALITY OR APPEARS STRESSED IN ANY WAY DURING THE GUARANTEE PERIOD MAY REQUIRE REPLACEMENT. THE CONTRACTOR MUST SCHEDULE A PRE AND POST GUARANTEE MEETING WITH THE OWNER'S REPRESENTATIVE FOR INSPECTION. FAILURE TO DO SO WILL MEAN THE OFFICIAL GUARANTEE PERIOD HAS NOT BEEN ACTIVATED OR DE-ACTIVATED.
- SUBMITTALS OF ALL LANDSCAPE MATERIALS SHALL BE APPROVED BY THE LANDSCAPE ARCHITECT PRIOR TO COMMENCING WORK. PROVIDER INFORMATION AND SAMPLES SHALL BE SUBMITTED OF ANY GRAVEL OR WOOD MULCHES. NURSERY STOCK SUBMITTAL SHALL INCLUDE PROVIDER INFORMATION WITH A LIST OF PLANT MATERIALS BEING PROVIDED BY THE NURSERY.
- IT IS THE CONTRACTORS RESPONSIBILITY TO VERIFY ALL QUANTITIES LISTED ON THE PLANS AND THE AVAILABILITY OF ALL PLANT MATERIALS IN THEIR SPECIFIC SIZES PRIOR TO SUBMITTING A BID. THE CONTRACTOR MUST NOTIFY THE LANDSCAPE ARCHITECT PRIOR TO SUBMITTING A BID IF THE CONTRACTOR DETERMINES A QUANTITY DEFICIENCY OR AVAILABILITY PROBLEM WITH SPECIFIED MATERIAL.
- SPECIFICATIONS FOR LANDSCAPE AND IRRIGATION CONSTRUCTION SHALL BE THE 2007 APWA 'MANUAL OF STANDARD SPECIFICATIONS'.
- ALL LANDSCAPE MATERIAL SHALL BE FULLY IRRIGATED BY AN AUTOMATIC IRRIGATION SYSTEM (DESIGN BUILD). IRRIGATION DESIGN SHALL BE APPROVED BY THE OWNER AND LANDSCAPE ARCHITECT PRIOR TO INSTALLATION.



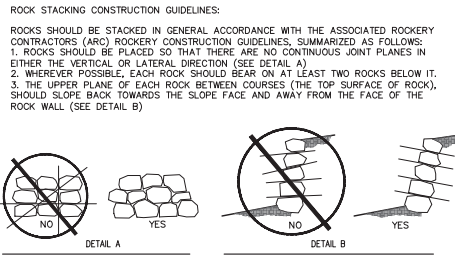
1 TREE PLANTING AND STAKING
N.T.S.



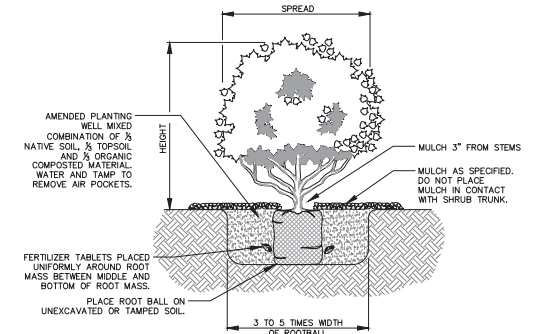
3 BOULDER PLACEMENT
N.T.S.



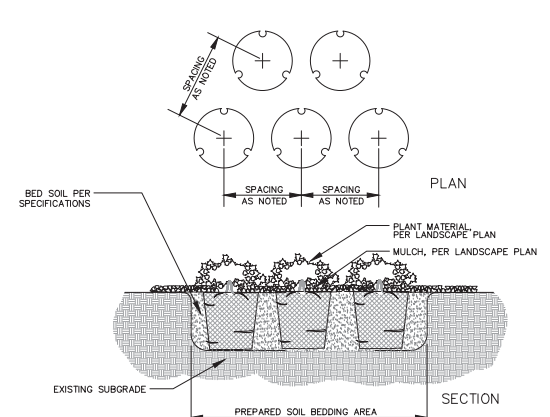
5 ROCK RETAINING WALL
N.T.S.



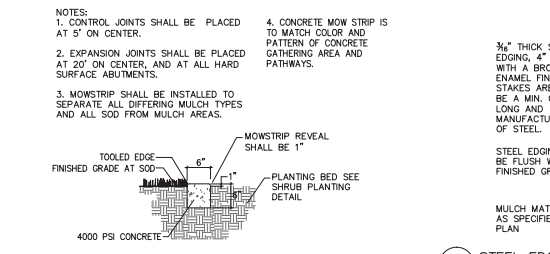
6 CONCRETE MOWSTRIP
N.T.S.



2 SHRUB AND ORNAMENTAL GRASS PLANTING
N.T.S.



4 GROUND COVER, ANNUAL, AND/OR PERENNIAL PLANTINGS
N.T.S.



7 STEEL EDGING BETWEEN MULCHES
N.T.S.

REV. NO.	COMMENT	DATE
1	AS SHOWN	1/25/14

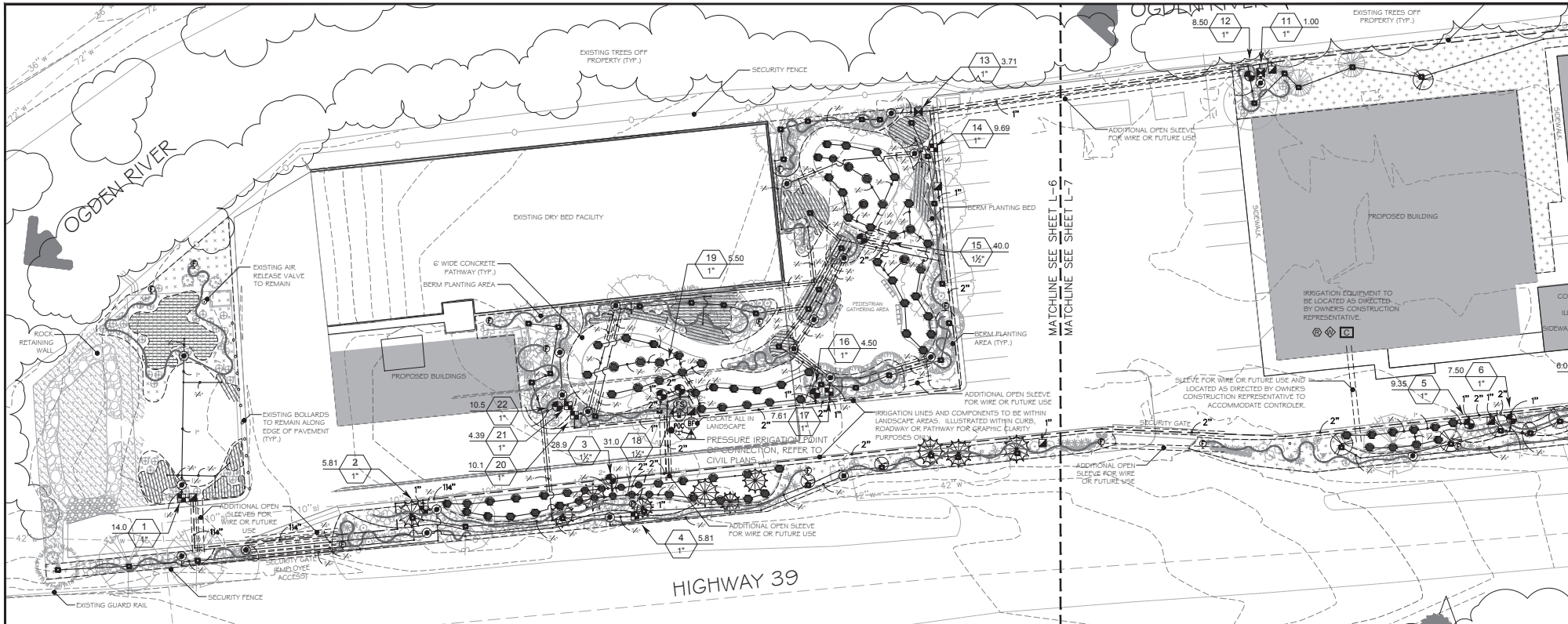
SUNRISE ENGINEERING
12227 S. BUSINESS PARK DR, SUITE 220
DRAPER, UTAH 84020
TEL 801.523.0100 - FAX 801.523.0990
www.sunrise-eng.com

OGDEN CITY
WATER TREATMENT PLANT RECONST.
LANDSCAPE NOTES AND DETAILS

ForeSite Design Group, L.C.
11800 Arroyo Canyon Drive
FSD-031-LS January 25, 2014

REV. NO.	DESIGNED	DRAWN	CHECKED	SHEET NO.
04655	DCM	DCM	DCM	51 of 244

C:\pdx\pdxproj\Projects\Source\Engineering\Ogden-Water Treatment\Plan\CAD\LS-0311r.dwg Jan 25, 2014 7:18pm EDC-10p



IRRIGATION SCHEDULE

SYMBOL	MANUFACTURER/MODEL/DESCRIPTION	QTY	PSI
	Rain Bird 1804 S Series MPR Turf Spray 4.0" Pop-Up Sprinkler with Co-Molded Wiper Seal. 1/2" NPT Female Threaded Inlet.	2	30
	Rain Bird 1804 B Series MPR Turf Spray 4.0" Pop-Up Sprinkler with Co-Molded Wiper Seal. 1/2" NPT Female Threaded Inlet.	16	30
	Rain Bird 1804 I O Series MPR Turf Spray 4.0" Pop-Up Sprinkler with Co-Molded Wiper Seal. 1/2" NPT Female Threaded Inlet.	26	30
	Rain Bird 1804 L 2 Series MPR Turf Spray 4.0" Pop-Up Sprinkler with Co-Molded Wiper Seal. 1/2" NPT Female Threaded Inlet.	19	30
	Rain Bird 1804 L 5 Series MPR Turf Spray 4.0" Pop-Up Sprinkler with Co-Molded Wiper Seal. 1/2" NPT Female Threaded Inlet.	23	30
	Rain Bird 1804 ADJ Turf Spray 4.0" Pop-Up Sprinkler with Co-Molded Wiper Seal. 1/2" NPT Female Threaded Inlet.	62	30
	Rain Bird 1804-1400 Flood Flooding 4.0" pop-up	73	30
	Rain Bird XZ-100-PRB-COM Medium Flow Drip Control Kit for Commercial Applications. 1" Ball Valve with 1" FESB Valve and 1" Pressure Regulating 40psi Quick-Check Basket Filter. 3gpm to 20gpm.	8	
	Rain Bird XZ-4F-100-PRF Low Flow Drip Control Kit, 1" Low Flow Valve, 3/4" Pressure Regulating RDV Filter, and 30psi Pressure Regulator. 0.2gpm-5gpm.	3	

	Pipe Transition Point in Drip Box Pipe transition point from PVC lateral to drip tubing with riser in 6" (150mm) drip box.	29
	Rain Bird MDCFCAP Dripine Flush Valve purple cap in compression fitting coupler. For non-potable water use. Install this cap in a round drip box. Drip boxes installed where drip line exceeds 50 feet. All other shorter drip lines to include surface flush cap.	16
	Area to Receive Drip Emitters Rain Bird VB-PC Single Outlet, Pressure Compensating Drip Emitters. Flow rates of 0.5gpm=blue, 1.0gpm=black, and 2.0gpm=red. Comes with a self-piercing barb inlet & barb outlet. Emitter Notes: 1 gal plant to receive 2 of 0.5 GPH emitters, 5 gal plant to receive 2 of 2.0 GPH emitters, 2 gal plant to receive 2 of 2.0 GPH emitters.	21,074 s.f.
	Area to Receive Dripine Rain Bird XFS-06 1/2 (12) XFS Sub-Surface Pressure Compensating Landscape Dripine w/Copper Shield Technology, 0.6GPH emitters at 1.2' O.C. Dripine laterals spaced at 12.0' apart, with emitters offset for triangular pattern. UV Resistant.	2,328 s.f.
	Rain Bird PEB 1" 1-1/2" 2" Plastic Industrial Valves. Low Flow Operating Capability, Globe Configuration.	11
	Rain Bird 44-LRC 1" Brass Quick-Coupling Valve, with Corrosion-Resistant Stainless Steel Spring, Locking Thermoplastic Rubber Cover, and 2-Piece Body.	9
	Rain Bird PEB 1-1/2" 1", 1-1/2", 2" Plastic Industrial Valves. Low Flow Operating Capability, Globe Configuration.	1

	Pressure Reducing Valve Pressure limited to 62.54 PSI	1
	Wilcox 975XL 1-1/2" Reduced Pressure Backflow device	1
	Rain Bird ESPBVM2E with (04) ESPM5M4 24 Station Commercial Controller. Mounted on a Plastic Wall Mount. Flow Sensing and Water Management Capabilities.	1
	Rain Bird R50-BE4 Rain Sensor, with metal latching bracket, extension wire.	1
	Rain Bird ETM Snap-in controller dedicated bay on back of any Rainbird ESP-LX controller. Ribbon cable connects cartridge to controller as per manufacturer's specifications. Compatible for 8 to 200 ESP-LX Controller Capable Stations.	1
	Rain Bird FS-150P 1-1/2" Flow Sensor for use with Rain Bird Maxcom, SiteControl, and ESP-LXD Central Control Systems. Plastic (PVC) Model. Suggested Operating Range of 5.0 GPM to 100.0 GPM. Sensors should be sized for flow rather than pipe size.	1
	Point of Connection 1-1/2" Static Pressure of 90 psi identified by civil engineer	4,795 l.f.
	Irrigation Lateral Line: PVC Schedule 40 PVC Schedule 40 irrigation pipe.	1,750 l.f.
	Irrigation Mainline: PVC Schedule 40 PVC Schedule 40 irrigation pipe.	1,393 l.f.
	Pipe Sleeve: Blue-Lock and PVC Class 200 Valve Callout	
	Valve Number	
	Valve Flow	
	Valve Size	

NOTE:
 1. SEE SHEET L-5 FOR OVERALL PLAN AND L-7 FOR OTHER ENLARGED PLAN.
 2. IRRIGATION SYSTEM IS EQUIPPED WITH A SMART ET BASED CONTROLLER AND RAIN SENSOR AS PART OF THE SPRINKLER SYSTEM.
 3. PLANS ARE DIAGRAMMATIC. DUE TO SCALE, THEREFORE, IT IS THE CONTRACTOR'S RESPONSIBILITY TO VERIFY QUANTITIES.

FORESITE
 Design Group, L.C.
 12227 S. BUSINESS PARK DR, SUITE 220
 DRAPER, UTAH 84020
 TEL 801.523.0150 • FAX 801.523.0990
 www.sunrise-eng.com

OGDEN CITY
 WATER TREATMENT PLANT RECONSTRUCTION
 LANDSCAPE IRRIGATION PLAN

REV NO. | COMMENT | DATE

1 | 1/25/14 |

OGDEN CITY

12227 S. BUSINESS PARK DR, SUITE 220
 DRAPER, UTAH 84020
 TEL 801.523.0150 • FAX 801.523.0990
 www.sunrise-eng.com

OGDEN CITY
 WATER TREATMENT PLANT RECONSTRUCTION
 LANDSCAPE IRRIGATION PLAN

REV NO. | ASSIGNED | DRAWN | CHECKED | SHEET NO. | L-6

04655 | DCM | DCM | DCM | 53 of 244

FDG-031-LS January 25, 2014

SCALE
 HORIZ: 1" = 20' : 22x34
 1" = 40' : 11x17

SUNRISE ENGINEERING

12227 S. BUSINESS PARK DR, SUITE 220
 DRAPER, UTAH 84020
 TEL 801.523.0150 • FAX 801.523.0990
 www.sunrise-eng.com

OGDEN CITY
 WATER TREATMENT PLANT RECONSTRUCTION
 LANDSCAPE IRRIGATION PLAN

REV NO. | ASSIGNED | DRAWN | CHECKED | SHEET NO. | L-6

04655 | DCM | DCM | DCM | 53 of 244

C:\FDG\Dropbox\Projects\Source\Engineering\Ogden Water Treatment Plant CAD\IFD-031P.dwg Jan 25, 2014 7:10pm EDC-1000



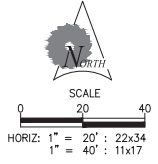
IRRIGATION SCHEDULE

SYMBOL	MANUFACTURER/MODEL/DESCRIPTION	QTY	PSI
	Rain Bird 1804 5 Series MPR Turf Spray 4.0" Pop-Up Sprinkler with Co-Molded Wiper Seal. 1/2" NPT Female Threaded Inlet.	2	30
	Rain Bird 1804 8 Series MPR Turf Spray 4.0" Pop-Up Sprinkler with Co-Molded Wiper Seal. 1/2" NPT Female Threaded Inlet.	16	30
	Rain Bird 1804 10 Series MPR Turf Spray 4.0" Pop-Up Sprinkler with Co-Molded Wiper Seal. 1/2" NPT Female Threaded Inlet.	26	30
	Rain Bird 1804 12 Series MPR Turf Spray 4.0" Pop-Up Sprinkler with Co-Molded Wiper Seal. 1/2" NPT Female Threaded Inlet.	19	30
	Rain Bird 1804 15 Series MPR Turf Spray 4.0" Pop-Up Sprinkler with Co-Molded Wiper Seal. 1/2" NPT Female Threaded Inlet.	23	30
	Rain Bird 1804 ADJ Turf Spray 4.0" Pop-Up Sprinkler with Co-Molded Wiper Seal. 1/2" NPT Female Threaded Inlet.	62	30
	Rain Bird 1804-1400 Flood Flood Bubblers 4.0" pop-up	73	30
SYMBOL	MANUFACTURER/MODEL/DESCRIPTION	QTY	PSI
	Rain Bird X2C-100-PRB-COM Medium Plus Flow Drip Control Kit for Commercial Applications. 1" Ball Valve with 1" PPSB Valve and 1" Pressure Regulating 40psi Quick-Check Basket Filter. 3gpm to 20gpm.	8	
	Rain Bird X2C-LF-100-PRF Low Flow Drip Control Kit. 1" Low Flow Valve, 3/4" Pressure Regulating RBT Filter, and 30psi Pressure Regulator. 0.2gpm-5gpm.	3	

	Pipe Transition Point in Drip Box Pipe transition point from PVC lateral to drip tubing with riser in 6" (150mm) drip box.	29	
	Rain Bird MDC/PCAP DripLine Plain Valve purple cap in compression fitting coupler. For non-potable water use. Install the cap in a round drip box. Drip boxes installed where drip line exceeds 50 feet. All other shorter drip lines to include surface flush cap.	16	
	Area to Receive Drip Emitters Rain Bird XB-FC Single Outlet, Pressure Compensating Drip Emitters. Flow rates of 0.5 gpm=blue, 1.0 gpm=black, and 2.0 gpm=red. Comes with a self-piercing barb inlet & barb outlet. Emitter Notes: 1 gpl plant to receive 2 of 0.5 GPH emitters. 5 gpl plant to receive 2 of 2.0 GPH emitters. 2 gpl plant to receive 2 of 2.0 GPH emitters.	21,074 s.f.	
	Area to Receive DripLine Rain Bird XPS-06-1/2 (112) XPS Sub-Surface Pressure Compensating Landscape DripLine w/Copper Shield Technology. 0.6GPH emitters at 1/2.0" O.C. DripLine laterals spaced at 12.0' apart, with emitters offset for triangular pattern. UV Resistant.	2,326 s.f.	
	Rain Bird PEB 1", 1-1/2", 2" Plastic Industrial Valves. Low Flow Operating Capability, Globe Configuration.	11	
	Rain Bird 44-LRC 1" Brass Quick-Coupling Valve, with Corrosion-Resistant Stainless Steel Spring, Locking Thermoplastic Rubber Cover, and 2-Piece Body.	9	
	Rain Bird PEB 1-1/2" 1", 1-1/2", 2" Plastic Industrial Valves. Low Flow Operating Capability, Globe Configuration.	1	

	Pressure Reducing Valve Pressure limited to 62.54 PSI	1	
	Wilcox 975X. 1-1/2" Reduced Pressure Backflow device	1	
	Rain Bird ESP/LVM [®] with (D4) ESP/LVM/S4 24 Station Commercial Controller. Mounted on a Plastic Wall Mount. Flow Sensing and Water Management Capabilities.	1	
	Rain Bird RSO-BG Rain Sensor, with metal latching bracket, extension wire.	1	
	Rain Bird ETM Snaps into dedicated bay on back of any Rainbird ESP-LX controller. Ribbon cable connects cartridge to controller as per manufacturer's specifications. Compatible for 8 to 200 ESP-LX Controller Capable Stations.	1	
	Rain Bird FS-150-P 1-1/2" Flow Sensor for use with Rain Bird Maxicon, StatControl, and ESP-LXD Central Control Systems. Plastic (PVC) Model. Suggested Operating Range of 5.0 GPM to 100.0 GPM. Sensors should be sized for flow rather than pipe size.	1	
	Point of Connection 1-1/2" Static Pressure of 90 psi identified by civil engineer	1	
	Irrigation Lateral Line: PVC Schedule 40 PVC Schedule 40 irrigation pipe.	4,795 l.f.	
	Irrigation Mainline: PVC Schedule 40 PVC Schedule 40 irrigation pipe.	1,750 l.f.	
	Pipe Sleeve: Blue-LOCK and PVC Class 200 Valve Galvali Valve Number	1,393 l.f.	
	Valve Flow		
	Valve Size		

NOTE:
1. SEE SHEET L-5 FOR OVERALL PLAN AND L-6 FOR OTHER ENLARGED PLAN.
2. IRRIGATION SYSTEM IS EQUIPPED WITH A SMART ET BASED CONTROLLER AND RAIN SENSOR AS PART OF THE SPRINKLER SYSTEM.
3. PLANS ARE DIAGRAMMATIC DUE TO SCALE, THEREFORE, IT IS THE CONTRACTOR'S RESPONSIBILITY TO VERIFY QUANTITIES.



foresite
Design Group, L.C.
1180 Arroyo Grande Drive
Redlands, CA 92370
951-943-7668
www.foresiteeng.com

FOC-031-LS January 25, 2014

REV. NO.	COMMENT	DATE
1	ISSUED FOR PERMIT	
2	ISSUED FOR PERMIT	
3	ISSUED FOR PERMIT	
4	ISSUED FOR PERMIT	
5	ISSUED FOR PERMIT	
6	ISSUED FOR PERMIT	
7	ISSUED FOR PERMIT	
8	ISSUED FOR PERMIT	
9	ISSUED FOR PERMIT	
10	ISSUED FOR PERMIT	
11	ISSUED FOR PERMIT	
12	ISSUED FOR PERMIT	
13	ISSUED FOR PERMIT	
14	ISSUED FOR PERMIT	
15	ISSUED FOR PERMIT	
16	ISSUED FOR PERMIT	
17	ISSUED FOR PERMIT	
18	ISSUED FOR PERMIT	
19	ISSUED FOR PERMIT	
20	ISSUED FOR PERMIT	
21	ISSUED FOR PERMIT	
22	ISSUED FOR PERMIT	
23	ISSUED FOR PERMIT	
24	ISSUED FOR PERMIT	
25	ISSUED FOR PERMIT	
26	ISSUED FOR PERMIT	
27	ISSUED FOR PERMIT	
28	ISSUED FOR PERMIT	
29	ISSUED FOR PERMIT	
30	ISSUED FOR PERMIT	
31	ISSUED FOR PERMIT	
32	ISSUED FOR PERMIT	
33	ISSUED FOR PERMIT	
34	ISSUED FOR PERMIT	
35	ISSUED FOR PERMIT	
36	ISSUED FOR PERMIT	
37	ISSUED FOR PERMIT	
38	ISSUED FOR PERMIT	
39	ISSUED FOR PERMIT	
40	ISSUED FOR PERMIT	
41	ISSUED FOR PERMIT	
42	ISSUED FOR PERMIT	
43	ISSUED FOR PERMIT	
44	ISSUED FOR PERMIT	
45	ISSUED FOR PERMIT	
46	ISSUED FOR PERMIT	
47	ISSUED FOR PERMIT	
48	ISSUED FOR PERMIT	
49	ISSUED FOR PERMIT	
50	ISSUED FOR PERMIT	
51	ISSUED FOR PERMIT	
52	ISSUED FOR PERMIT	
53	ISSUED FOR PERMIT	
54	ISSUED FOR PERMIT	
55	ISSUED FOR PERMIT	
56	ISSUED FOR PERMIT	
57	ISSUED FOR PERMIT	
58	ISSUED FOR PERMIT	
59	ISSUED FOR PERMIT	
60	ISSUED FOR PERMIT	
61	ISSUED FOR PERMIT	
62	ISSUED FOR PERMIT	
63	ISSUED FOR PERMIT	
64	ISSUED FOR PERMIT	
65	ISSUED FOR PERMIT	
66	ISSUED FOR PERMIT	
67	ISSUED FOR PERMIT	
68	ISSUED FOR PERMIT	
69	ISSUED FOR PERMIT	
70	ISSUED FOR PERMIT	
71	ISSUED FOR PERMIT	
72	ISSUED FOR PERMIT	
73	ISSUED FOR PERMIT	
74	ISSUED FOR PERMIT	
75	ISSUED FOR PERMIT	
76	ISSUED FOR PERMIT	
77	ISSUED FOR PERMIT	
78	ISSUED FOR PERMIT	
79	ISSUED FOR PERMIT	
80	ISSUED FOR PERMIT	
81	ISSUED FOR PERMIT	
82	ISSUED FOR PERMIT	
83	ISSUED FOR PERMIT	
84	ISSUED FOR PERMIT	
85	ISSUED FOR PERMIT	
86	ISSUED FOR PERMIT	
87	ISSUED FOR PERMIT	
88	ISSUED FOR PERMIT	
89	ISSUED FOR PERMIT	
90	ISSUED FOR PERMIT	
91	ISSUED FOR PERMIT	
92	ISSUED FOR PERMIT	
93	ISSUED FOR PERMIT	
94	ISSUED FOR PERMIT	
95	ISSUED FOR PERMIT	
96	ISSUED FOR PERMIT	
97	ISSUED FOR PERMIT	
98	ISSUED FOR PERMIT	
99	ISSUED FOR PERMIT	
100	ISSUED FOR PERMIT	

SUNRISE ENGINEERING
12227 S. BUSINESS PARK DR, SUITE 220
DRAPER, UTAH 84020
TEL 801.523.0150 • FAX 801.523.0990
www.sunrise-eng.com

OGDEN CITY
WATER TREATMENT PLANT RECON.
LANDSCAPE IRRIGATION PLAN

REV. NO.	DESIGNED	DRAWN	CHECKED	SHEET NO.
04655	DCM	DCM	DCM	54 of 244

L-7

IRRIGATION NOTES

1. THE LANDSCAPE CONTRACTOR SHALL PROVIDE IRRIGATION AS-BUILT DRAWINGS OF THE IRRIGATION SYSTEM TO THE OWNERS CONSTRUCTION REPRESENTATIVE. ALL IRRIGATION COMPONENTS ADDED, DELETED, OR MODIFIED IN THE FIELD SHALL BE NOTED ON THE PLAN. NOTE TAP SIZE, LINE SIZE, AND STATIC PRESSURE AT POINT OF CONNECTION.
2. IRRIGATION SYSTEM COMPONENTS MUST BE PREMIUM QUALITY ONLY AND INSTALLED TO MANUFACTURERS REQUIREMENTS AND SPECIFICATIONS. THE CONTRACTOR IS RESPONSIBLE FOR CHECKING STATE AND LOCAL LAWS FOR ALL SPECIFIED MATERIALS AND WORKMANSHIP. SUBSTITUTIONS MUST BE APPROVED BY LANDSCAPE ARCHITECT. PROVIDE OWNER AND MAINTENANCE PERSONNEL WITH INSTRUCTION MANUAL AND ALL PRODUCTS DATA TO OPERATE, CHECK, WINTERIZE, REPAIR, AND ADJUST SYSTEM. ANY CHANGES MUST BE DOCUMENTED AND SUBMITTED TO LANDSCAPE ARCHITECT IN AN AS-BUILT PLAN FORMAT.
3. IRRIGATION SYSTEM GUARANTEE FOR ALL MATERIALS AND WORKMANSHIP SHALL BE ONE YEAR FROM THE TIME OF PROJECT ACCEPTANCE. GUARANTEE WILL INCLUDE, BUT IS NOT LIMITED TO WINTERIZING, SPRING ACTIVATION, REPAIR, TRENCH SETTING, BACKFILLING DEPRESSIONS, AND REPAIRING FREEZE DAMAGE. CONTRACTOR MUST CONTACT OWNERS REPRESENTATIVE TO SCHEDULE PRE AND POST GUARANTEE INSPECTION MEETINGS. FAILURE TO DO SO WILL MEAN THE OFFICIAL GUARANTEE PERIOD HAS NOT BEEN ACTIVATED OR DE-ACTIVATED.
4. IRRIGATION SYSTEM STATIC PRESSURE MUST BE CHECKED BY THE CONTRACTOR BEFORE CONSTRUCTION BEGINS. CONTACT LANDSCAPE ARCHITECT IF MEASURED STATIC PRESSURE IS UNDER 70 P.S.I. OR OVER 100 P.S.I.
5. IRRIGATION SYSTEM CHECK MUST BE DONE BEFORE THE SYSTEM IS BACKFILLED. IRRIGATION MAINLINE AND EACH CONTROL VALVE SECTION MUST BE FLUSHED AND PRESSURE CHECKED. ASSURE THE COMPLETE SYSTEM HAS NO DOCUMENTED PROBLEMS AND PULL HEAD TO HEAD COVERAGE WITH ADEQUATE PRESSURE FOR SYSTEM OPERATION. ADJUST SYSTEM TO AVOID SPRAY ON BUILDING, HARDSCAPE, AND ADJACENT PROPERTY. ANY PROBLEMS OR PLAN DISCREPANCIES MUST BE REPORTED TO THE LANDSCAPE ARCHITECT.
6. FIELD VERIFICATION OF ALL IRRIGATION PIPING AND EQUIPMENT NECESSARY TO COMPLETE CONSTRUCTION IS THE RESPONSIBILITY OF THE CONTRACTOR.
7. IRRIGATION LATERALS AND FITTINGS MUST BE SCHEDULE 40 P.V.C. THREE QUARTER (3/4) INCH MINIMUM SIZE. SOLVENT WELD ALL JOINTS AS PER MANUFACTURERS SPECIFICATIONS FOR MEASURED STATIC P.S.I. TEFLON TAPE ALL THREADED FITTINGS. THE MINIMUM DEPTH OF LINES SHALL BE TWELVE (12) INCHES. FLOWS IN G.P.M. FOR UN-SIZED LINES OR CHANGES SHALL BE (3/4 INCH-1.8 G.P.M.), (1 INCH-9-12 G.P.M.), (1 1/4 INCH-13-22 G.P.M.), (1-1/2 INCH-23-30 G.P.M.), (2 INCH-31-50 G.P.M.). INSTALL KING DRAINS AT ALL LOW POINTS AND ADAPT SYSTEM TO MANUAL COMPRESSION AIR BLOWOUT. THE OWNER MUST BE INFORMED ON WINTERIZING SCHEDULE FOR BLOWING OUT SYSTEM.
8. IRRIGATION MAIN LINE 2" AND SMALLER SHALL BE SCHEDULE 40 PVC PIPE WITH SCHEDULE 80 FITTINGS. SOLVENT WELD ALL JOINTS AS PER MANUFACTURERS SPECIFICATIONS FOR MEASURED STATIC PRESSURE. USE TEFLON TAPE ON ALL THREADED JOINTS. LINE DEPTH MUST BE TWENTY FOUR (24) INCHES MINIMUM.
9. THRUST BLOCKS FOR MAINLINES 2" OR GREATER SHALL BE INSTALLED WITH A MINIMUM OF THREE AND A HALF (3 1/2) CUBIC FOOT OF CONCRETE WHEREVER A CHANGE IN DIRECTION OR A "T" OCCURS.
10. CONTROL WIRE MUST BE UF-UL LISTED, COLOR CODED, COPPER CONDUCTOR, DIRECT BURIAL USE 1/4 GAUGE MINIMUM WIRING WITH ALL CONNECTIONS MADE WITH WATERTIGHT RAINBIRD SPLICE-1 WATERPROOF CONNECTORS AND CONTAINED VALVE BOXES. PROVIDE 2" OF SLACK WIRE AT EACH REMOTE CONTROL VALVE IN VALVE BOXES AND SLACK AT ALL CHANGES IN DIRECTION. TAPE WIRE TO THE UNDERSIDE OF THE MAINLINE EVERY TWENTY (20) FEET. WIRING SHALL HAVE SEPARATE COLORS FOR COMMON, CONTROL, AND SPARE. PROVIDE ONE SPARE WIRE FOR EVERY 5 REMOTE CONTROL VALVES. WITH SPARE AVAILABLE AT ALL VALVE MANIFOLDS OR CLUSTERS. ALL SPARE WIRE SHALL BE "HOME RUN" TO THE CONTROLLER AND COMMON SHALL BE END RUN.
11. HEAD RISERS FOR SPRAY HEADS MUST BE A "FUNNY PIPE" SYSTEM. RISERS FOR GEAR DRIVEN AND IMPACT HEADS MUST BE RAINBIRD TSJ SERIES SWING JOINTS (SIZE TO MATCH INLET SIZE OF HEAD) OR APPROVED EQUAL.
12. SIZE VALVE BOXES ACCORDING TO VALVE NUMBERS FOR EASE OF MAINTENANCE AND REPAIR. INSTALL FOUR (4) CUBIC FEET OF PEA GRAVEL FOR SUMP IN BASE OF BOXES.
13. QUICK COUPLERS SHALL BE A RAINBIRD 441RC WITH A LASCO 1" UNITIZED SWING JOINT ASSEMBLY AND 1" BRASS INSERT 90° ELL OUTLET, SUPPORT WITH REBAR IN EACH RETAINER LUG. INSTALL WHERE SHOWN ON THE PLANS.
14. IRRIGATION SYSTEM BACKFILL MUST OCCUR ONLY AFTER SYSTEM CHECK IS COMPLETED AS SPECIFIED. USE ONLY ROCK FREE CLEAN FILL AROUND PIPES, VALVES, DRAINS, OR ANY IRRIGATION SYSTEM COMPONENTS. WATER SETTLE ALL TRENCHES AND EXCAVATIONS.
15. ALL IRRIGATION PIPE RUNNING THROUGH WALLS, UNDER SIDEWALK, ASPHALT, OR OTHER HARD SURFACE SHALL BE SLEEVED PRIOR TO PAVING. IT IS THE IRRIGATION CONTRACTORS RESPONSIBILITY TO COORDINATE SLEEVE WITH CONCRETE AND PAVEMENT CONTRACTORS. THE DEPTH FOR MAIN LINE SLEEVES SHALL BE TWENTY FOUR (24) INCHES MINIMUM. DEPTH FOR LATERAL SLEEVES SHALL BE TWELVE (12) INCHES MINIMUM. SLEEVES SHALL BE A MINIMUM OF TWO SIZES LARGER THAN THE PIPE TO BE SLEEVED. ALL VALVE WIRING SHALL BE CONTAINED IN SEPARATE SLEEVEING.

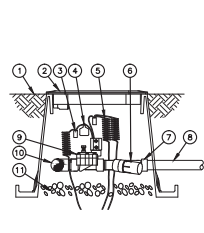
16. PLANS ARE DIAGRAMMATIC AND APPROXIMATE DUE TO SCALE. WHERE POSSIBLE, ALL PIPING IS TO BE INSTALLED WITHIN THE PLANTING AREAS. NO TEES, ELLS, OR CHANGES IN DIRECTION SHALL OCCUR UNDER HARDSCAPE.

17. SPRAY HEADS ADJACENT TO HARDSCAPE PAVING SHALL BE SPACED AWAY 1'-4". SPRAY HEADS ADJACENT TO WALLS, BUILDINGS, FENCES OR STRUCTURES SHALL BE SPACED AWAY A MINIMUM OF 6".

18. IT IS THE CONTRACTORS RESPONSIBILITY TO VERIFY ALL QUANTITIES BASED UPON THE PLAN PRIOR TO COMPLETION OF A CONSTRUCTION COST ESTIMATE.

19. UPON COMPLETION OF IRRIGATION MODIFICATIONS, THE CONTRACTOR SHALL VISUALLY INSPECT THE IRRIGATION SYSTEM AND VERIFY THAT ALL IRRIGATION ZONES OPERATE PROPERLY. ANY UNDER IRRIGATED OR UNIRRIGATED AREAS SHALL BE IDENTIFIED, AND THE CONTRACTOR SHALL MAKE ADJUSTMENTS OR ADDITIONS TO THE SYSTEM TO CORRECT IRRIGATION DEFICIENCIES.

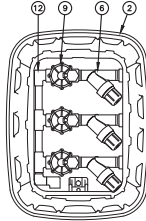
20. DRIP SYSTEM PIPING SHALL CONSIST OF A RIGID SCHEDULE 40 PVC PIPE DISTRIBUTION SYSTEM CONNECTING DRIP IRRIGATED PLANTER AREAS. POLYTUBING SHALL BE RUN OFF THE RIGID PVC IN EACH PLANTING AREA OR ISLAND WITH A PVC TO POLYTUBING ADAPTER. NO POLYTUBING SHALL RUN UNDER PAVEMENT.



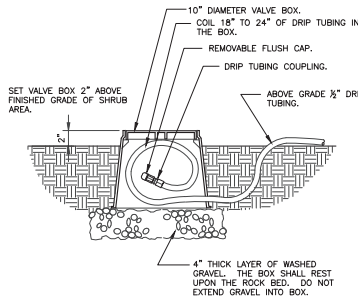
SIDE VIEW

XGZ-100-PRF 1" CONTROL ZONE KIT IN SQUARE VALVE BOX
OPTION 1

- 1 FINISH GRADE
- 2 STANDARD VALVE BOX WITH COVER: RAIN BRD VIB-STD
- 3 WATERPROOF CONNECTION: RAIN BRD DB SERIES
- 4 VALVE ID TAG
- 5 30-INCH LINEAR LENGTH OF WIRE, COILED
- 6 PRESSURE REGULATING FILTER: RAIN BRD PRF-100-RBY (INCLUDED IN XGZ-100-PRF KIT)
- 7 PVC SOH 40 FEMALE ADAPTOR
- 8 LATERAL PIPE
- 9 REMOTE CONTROL VALVE: RAIN BRD 100-DV (INCLUDED IN XGZ-100-PRF KIT)
- 10 PVC SOH 40 TEE OR ELL TO MANIFOLD
- 11 3-INCH MINIMUM DEPTH OF 3/4-INCH WASHED GRAVEL
- 12 MANIFOLD PIPE AND FITTINGS

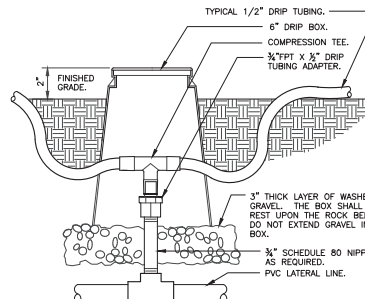


TOP VIEW

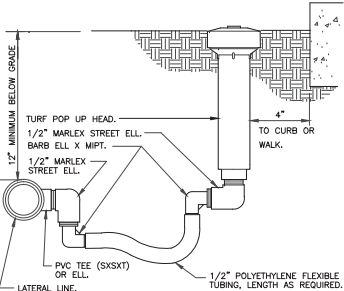


1. LOCATE FLUSH CAP ASSEMBLY AT THE END OF EACH DRIP LINE.
2. ENSURE THAT THE COILED DRIP TUBING IS OF SUFFICIENT LENGTH TO COMPLETELY EXTEND OUT OF THE VALVE BOX WHEN FLUSHING.

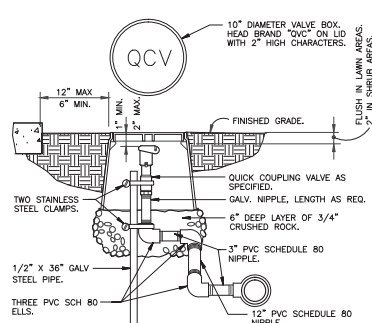
2 DRIP FLUSH CAP ASSEMBLY
1 1/2" = 1'-0"



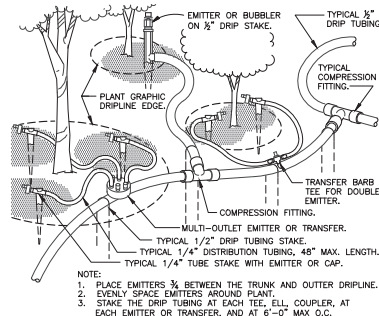
3 ZONE CONTROL
3" = 1'-0"



4 TURF SPRAY FLEX ASSEMBLY
3" = 1'-0"



5 QUICK COUPLING VALVE IN BOX
1 1/2" = 1'-0"



6 TYPICAL DRIP TUBING
1 1/2" = 1'-0"

foresite
Design Group, L.C.

REV. NO.	COMMENT	DATE
04655	DESIGNED	DCM
04656	DRAWN	DCM
04657	CHECKED	DCM
04658	SHEET NO.	55 of 244
L-8		