

FILTER BUILDING - OGDEN CITY

APPLICABLE CODES

Table with columns for Code Name, Year, and Edition. Includes International Building Code, Mechanical Code, Fuel Gas Code, Plumbing Code, Fire Code, Energy Conservation Code, and National Electrical Code.

A. Occupancy and Group: F-1 B
Change in Use: Yes No No Mixed Occupancy: Yes YES No
Special Use and Occupancy (e.g. High Rise, Covered Mall): NO

B. Seismic Design Category: 0 Design Wind Speed: 120 mph

C. Type of Construction (circle one):
I A I B II A II B III A III B IV HT V A V B

D. Fire Resistance Rating: Requirements for the Exterior Walls based on the fire separation distance (in hours):
North: 0 South: 0 East: 0 West: 0 (NOT IN SCOPE)

E. Mixed Occupancies: YES Nonseparated Uses: YES

F. Sprinklers:
Required: NO Provided: NO
Type of Sprinkler System (IBC 903.3.1) -

G. Number of Stories: 2 Building Height: 34' 0" A.F.F.

H. Actual Area per Floor (square feet): 10,824 S.F., 2224 S.F.

I. Tabular Area (Table 503): 2 STORIES AT 15,500 S.F. - 31,000 S.F.

J. Area Modifications:
AREA JUSTIFICATION: BUILDING IS AN EXISTING STRUCTURE, WITH FIRE WALLS AND FIRE SPRINKLERS INSTALLED UNDER PREVIOUS EDITIONS OF THE CODE. WORK OF THIS PROJECT DOES NOT ADD ANY NEW OR ADDITIONAL AREA TO THE BUILDING. ALL PROPOSED OCCUPANCIES MATCH EXISTING OCCUPANCIES IN EACH AREA.

a) A_s = {A_1 + [A_2 x I_1] + [A_3 x I_2]} I_1 = [F/P - 0.25] W / 30

b) Sum of the Ratio Calculations for Mixed Occupancies:
Actual Area / Allowable Area <= 1

c) Total Allowable Area for:

- 1) One Story: A_1(2)
2) Two Story: A_2(2)
3) Three Story: A_3(3)

d) Unlimited Area Building: Yes No X Code Section: -

K. Fire Resistance Rating Requirements for Building Elements (hours).

Table with columns: Element, Hours, Assembly Listing, Element, Hours, Assembly Listing. Rows include Exterior Bearing Walls, Interior Bearing Walls, Exterior Non-Bearing Walls, Structural Frame, Partitions - Permanent, Fire Barriers, Floors - Ceiling Floors, Exterior Doors and Windows, Fire Walls, Fire Partitions, Smoke Partitions.

L. Design Occupant Load: 4(F-1) + 67(B) = 71

Exit Width Required: 24' & 10.2" Exit Width Provided: 34' LEVEL 01 & 02
LEVEL 02: 51' x 2 - 10.2"

M. Minimum Number of Required Plumbing Facilities:

- a) Water Closets - Required (m) 1 (f) 1 Provided (m) 1 (f) 1
b) Urinals - Required (m) 0 (f) 0 Provided (m) 1 (f) 0
c) Lavatories - Required (m) 1 (f) 1 Provided (m) 1 (f) 1
d) Bath Tubs or Showers: 1
e) Drinking Fountains: 1 Service Sinks: 1

DEWATERING BUILDING - OGDEN CITY

APPLICABLE CODES

Table with columns for Code Name, Year, and Edition. Includes International Building Code, Mechanical Code, Fuel Gas Code, Plumbing Code, Fire Code, Energy Conservation Code, and National Electrical Code.

A. Occupancy and Group: F-2 S-2
Change in Use: Yes No No Mixed Occupancy: Yes YES No
Special Use and Occupancy (e.g. High Rise, Covered Mall): NO

B. Seismic Design Category: 0 Design Wind Speed: 120 mph

C. Type of Construction (circle one):
I A I B II A II B III A III B IV HT V A V B

D. Fire Resistance Rating: Requirements for the Exterior Walls based on the fire separation distance (in hours):
North: 0 South: 0 East: 0 West: 0 (NOT IN SCOPE)

E. Mixed Occupancies: YES Nonseparated Uses: YES

F. Sprinklers:
Required: NO Provided: NO
Type of Sprinkler System (IBC 903.3.1) -

G. Number of Stories: ONE Building Height: 22' 6" A.F.F.

H. Actual Area per Floor (square feet): 2224 S.F.

I. Tabular Area (Table 503): 1 STORY AT 23,000 S.F. - 23,000 S.F.

J. Area Modifications:
AREA JUSTIFICATION: BUILDING IS AN EXISTING STRUCTURE, WITH FIRE WALLS AND FIRE SPRINKLERS INSTALLED UNDER PREVIOUS EDITIONS OF THE CODE. WORK OF THIS PROJECT DOES NOT ADD ANY NEW OR ADDITIONAL AREA TO THE BUILDING. ALL PROPOSED OCCUPANCIES MATCH EXISTING OCCUPANCIES IN EACH AREA.

a) A_s = {A_1 + [A_2 x I_1] + [A_3 x I_2]} I_1 = [F/P - 0.25] W / 30

b) Sum of the Ratio Calculations for Mixed Occupancies:
Actual Area / Allowable Area <= 1

c) Total Allowable Area for:

- 1) One Story: A_1(2)
2) Two Story: A_2(2)
3) Three Story: A_3(3)

d) Unlimited Area Building: Yes No X Code Section: -

K. Fire Resistance Rating Requirements for Building Elements (hours).

Table with columns: Element, Hours, Assembly Listing, Element, Hours, Assembly Listing. Rows include Exterior Bearing Walls, Interior Bearing Walls, Exterior Non-Bearing Walls, Structural Frame, Partitions - Permanent, Fire Barriers, Floors - Ceiling Floors, Exterior Doors and Windows, Fire Walls, Fire Partitions, Smoke Partitions.

L. Design Occupant Load: 5(F-2) + 6(S-2) = 0

Exit Width Required: - Exit Width Provided: 34' LEVEL 01

M. Minimum Number of Required Plumbing Facilities: (NOT REQUIRED, 0 OCCUPANY)

- a) Water Closets - Required (m) (f) Provided (m) (f)
b) Urinals - Required (m) (f) Provided (m) (f)
c) Lavatories - Required (m) (f) Provided (m) (f)
d) Bath Tubs or Showers:
e) Drinking Fountains: Service Sinks:

SYMBOLS LEGEND

Legend of symbols for interior elevation, building elevation, building section, wall section, keynote, door tag, wall type, room tag, glass type, elevation marker, window type, center line, grid, north arrow, ceiling type, and various material patterns like concrete, masonry, steel, batt insulation, rigid insulation, finish grade wood, plywood, and demolition.

NOTE: ALL MATERIALS REFERENCED ARE NEW UNLESS NOTED OTHERWISE

ABBREVIATIONS

Table of abbreviations for building components and materials, including ADJ, AFF, AL, A.B., L, ANGLE, AT, B, BLDG, BLDG, CAB, CLG, CL, C, COL, CONC, COAT, CMP, DIA, DBL, EA, ELEC, ELEV, FEC, FF, FTG, FDN, FS, GALVANIZED IRON, GYP, GYP BD, HCR, HM, HR, IBC, INSUL, JST, JOIST, LAV, MATL, MAX, MECH, MIN, MISC, NCM, NIC, NO, #, O.C., OPNG, OD, OH, O.P.C.I., PLYWOOD, PSF, PSI, REINF, RECD, SHT, SHTG, SHM, SCL, SC, SPEC, SQ, SS, STD, STG, TYP, T.O.B., U, U.N.O., V, VER, W, W, WD, SHEET SHEATHING, SOLID CORE, SPECIFICATION, STAINLESS STEEL, STANDARD, STORAGE, UNLESS NOTED OTHERWISE, VERTICAL, WITH, WOOD.




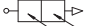


Project information block including CRSA logo, address (649 E SOUTH TEMPLE), contact info (SLC, UT 84102, 801.355.5915), SUNRISE ENGINEERING logo, project name (WATER TREATMENT PLANT RECONST.), and a table for revision control (REV NO., COMMENTS, DATE).

OCCUPANCY CALCULATION				
NO.	ROOM NAME	AREA	OCC. TYPE	OCC. NO.
100	ENTRY	65 SF	B	0
101	FILTER ROOM	4951 SF	F-1	0
102	ELECTRICAL	317 SF	S-1	0
103	LAB	235 SF	B	3
104	MEN	66 SF	B	0
105	SHOWER	65 SF	B	0
106	LOCKER	92 SF	B	1
107	JANITOR	49 SF	B	0
108	WOMEN	51 SF	B	0
109	BREAK RM	262 SF	B	3
110	OFFICE	265 SF	B	3
111	CONTROL ROOM	390 SF	B	5
111A	SERVER	83 SF	B	0
112	CHEMICAL EFM/CIP	1207 SF	F-1	0
113	GARAGE	636 SF	F-1	0
114	REVERSE FEED PUMPS ROOM	1316 SF	F-1	0
201	BOARD ROOM	756 SF	B	52
202	BREAK RM	48 SF	B	0
203	STORAGE	6088 SF	F-1	2
D101	DEWATER ROOM	945 SF	F-2	0
D102	GARAGE	1128 SF	S-2	0



GENERAL NOTES

1. SEE SHEET AE??? FOR CODE ANALYSIS.

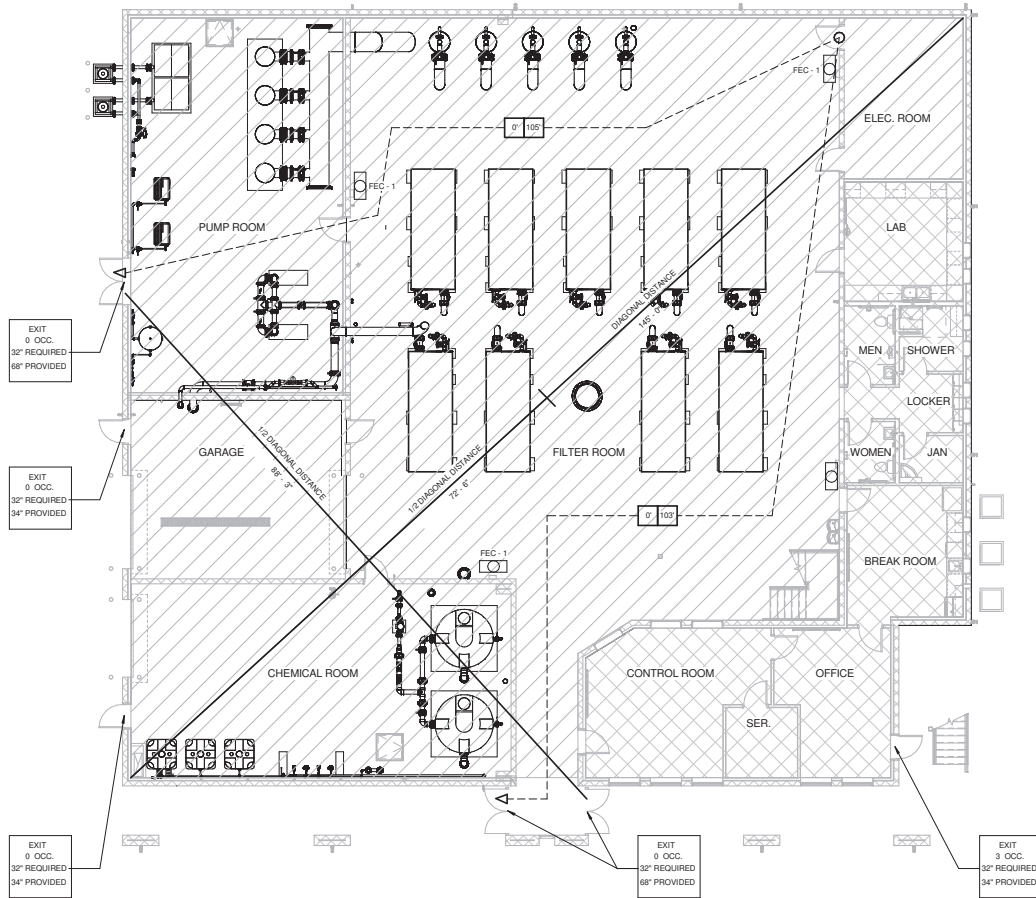
LIFE SAFETY LEGEND

-  FIRE EXTINGUISHER - SURFACE MOUNTED
75 FOOT TRAVEL DISTANCE PER IBC TABLE 906.3
-  FIRE EXTINGUISHER - SEMI RECESS MOUNTED
75 FOOT TRAVEL DISTANCE PER IBC TABLE 906.3
-  EXIT DEVICE REQUIRED
-  EGRESS PATH
-  TRAVEL DISTANCE
-  COMMON PATH OF TRAVEL

OCCUPANCY TYPES

-  F-1 FACTORY OCCUPANCY
-  B BUSINESS OCCUPANCY

NOTE: OCCUPANCY REQUIREMENTS AS PER IBC 2012 TABLE 1004.1.2




1 LIFE SAFETY FLOOR PLAN - LEVEL 01
1/8" = 1'-0"

649 E SOUTH TEMPLE
SLC, UT 84102
801.355.5915
www.crsa-us.com

CRSA

REV. NO.	COMMENTS	DATE



PROFESSIONAL ENGINEER
STATE OF UTAH
No. 1102336
EXPIRES 12/31/18



**SUNRISE
ENGINEERING**

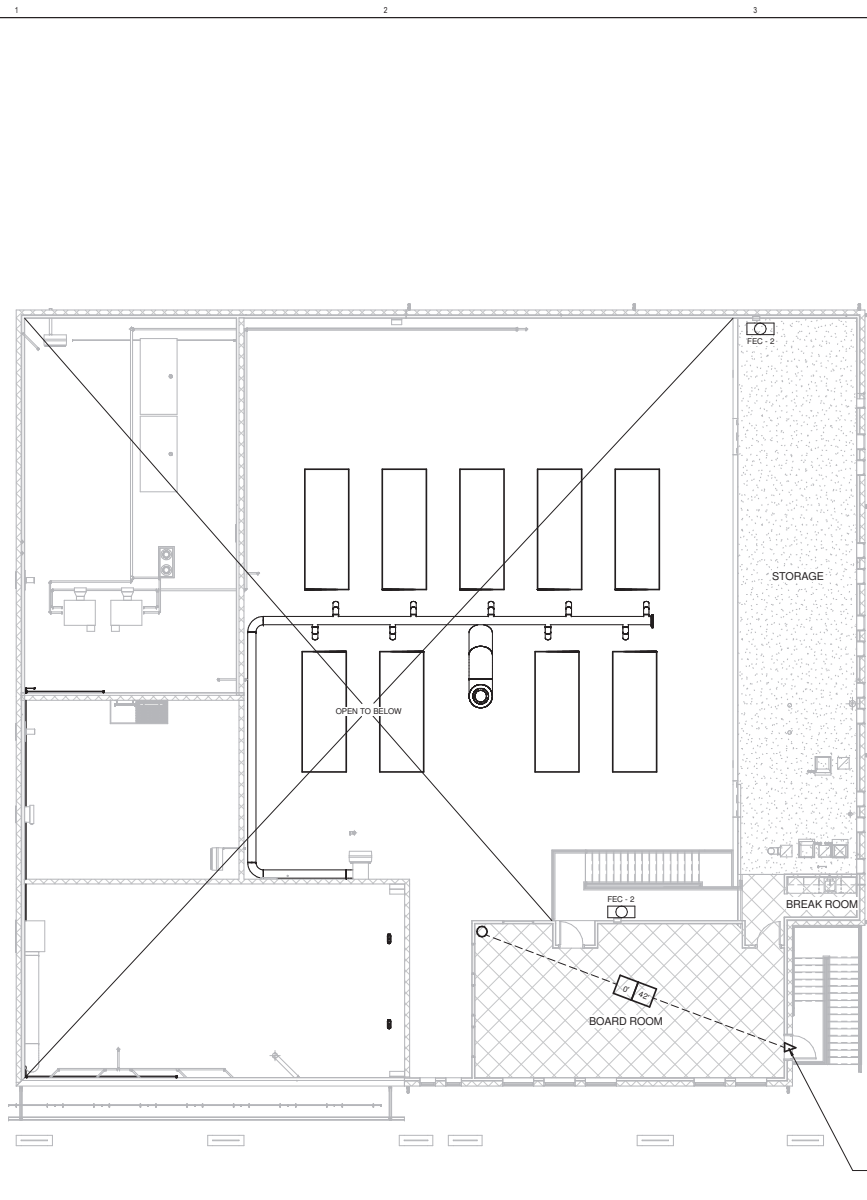
2036 LINCOLN AVE., SUITE 104
OGDEN, UTAH 84401
TEL 801-556-8109 • FAX 801-523-0990
www.sunrise-eng.com

OGDEN CITY

WATER TREATMENT PLANT RECONST.
LIFE SAFETY CODE ANALYSIS PLAN -
LEVEL 01

REV. NO.	DESIGNED	DRAWN	CHECKED	SHEET NO.
04655	DT	PN/MC	JN	57 of 244

AE002




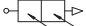




OCCUPANCY CALCULATION				
NO.	ROOM NAME	AREA	OCC. TYPE	OCC. NO.
100	ENTRY	65 SF	B	0
101	FILTER ROOM	4951 SF	F-1	0
102	ELECTRICAL	317 SF	S-1	0
103	LAB	235 SF	B	3
104	MEN	66 SF	B	0
105	SHOWER	65 SF	B	0
106	LOCKER	92 SF	B	1
107	JANITOR	49 SF	B	0
108	WOMEN	51 SF	B	0
109	BREAK RM	262 SF	B	3
110	OFFICE	265 SF	B	3
111	CONTROL ROOM	390 SF	B	5
111A	SERVER	83 SF	B	0
112	CHEMICAL EFM/CIP	1207 SF	F-1	0
113	GARAGE	636 SF	F-1	0
114	REVERSE FEED PUMPS ROOM	1316 SF	F-1	0
201	BOARD ROOM	756 SF	B	52
202	BREAK RM	48 SF	B	0
203	STORAGE	6088 SF	F-1	2
D101	DEWATER ROOM	945 SF	F-2	0
D102	GARAGE	1128 SF	S-2	0



GENERAL NOTES

1. SEE SHEET AE777 FOR CODE ANALYSIS.

LIFE SAFETY LEGEND

-  FIRE EXTINGUISHER - SURFACE MOUNTED
75 FOOT TRAVEL DISTANCE PER IBC TABLE 906.3
-  FIRE EXTINGUISHER - SEMI RECESS MOUNTED
75 FOOT TRAVEL DISTANCE PER IBC TABLE 906.3
-  EXIT DEVICE REQUIRED
-  EGRESS PATH
-  TRAVEL DISTANCE
-  COMMON PATH OF TRAVEL

OCCUPANCY TYPES

-  F-1 FACTORY OCCUPANCY
-  B BUSINESS OCCUPANCY

NOTE: OCCUPANCY REQUIREMENTS AS PER IBC 2012 TABLE 1004.1.2

1 LIFE SAFETY FLOOR PLAN - LEVEL 02
1/8" = 1'-0"

EXIT
58' OOC
32' REQUIRED
34' PROVIDED

CRSA 649 E SOUTH TEMPLE
SLC, UT 84102
801.355.5915
www.crsq-us.com

REV. NO.	COMMENTS	DATE

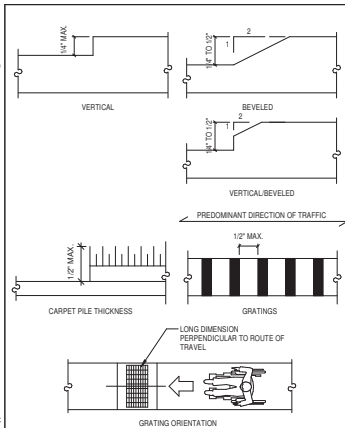
SUNRISE ENGINEERING
2036 LINCOLN AVE., SUITE 104
OGDEN, UTAH 84401
TEL 801.556.8109 • FAX 801.523.0990
www.sunrise-eng.com

OGDEN CITY

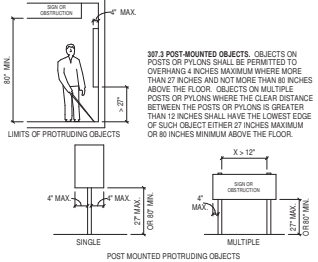
WATER TREATMENT PLANT RECONST. LIFE SAFETY CODE ANALYSIS PLAN - LEVEL 02

REV. NO.	DESIGNED	DRAWN	CHECKED	SHEET NO.	TOTAL SHEETS
04655	DT	PN/MC	JN	58	244

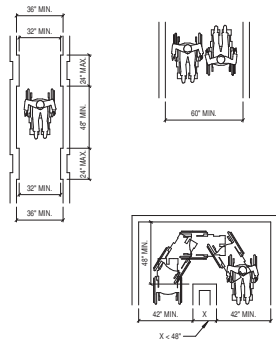
AE003



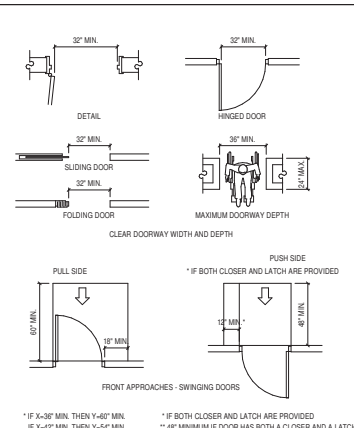
303. CHANGES IN LEVEL



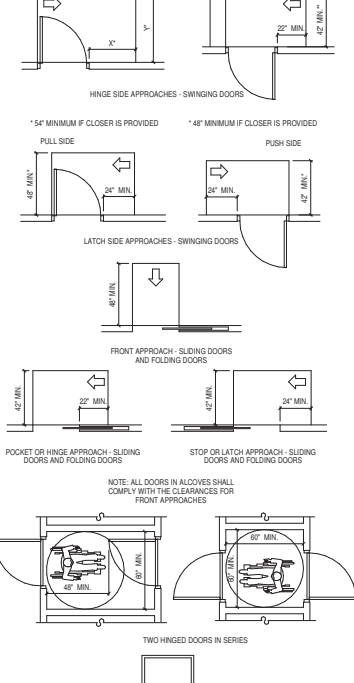
307. PROTRUDING OBJECTS



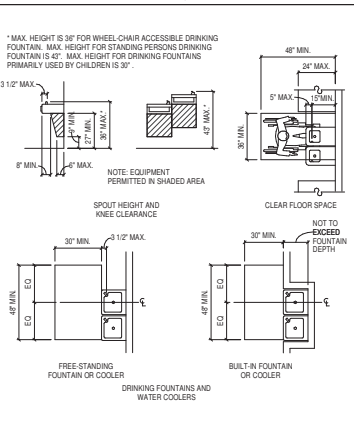
403. ACCESSIBLE ROUTES



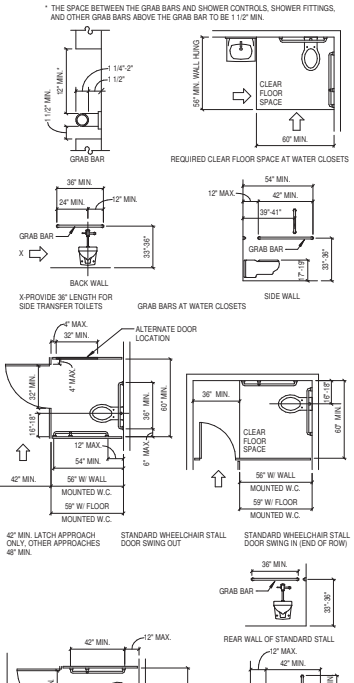
404. DOORS AND DOORWAYS



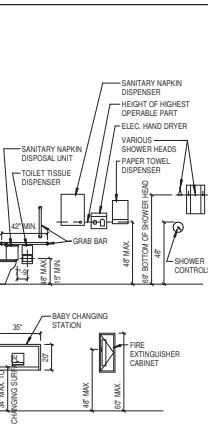
602 DRINKING FOUNTAINS



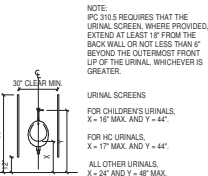
604 TOILETS AND TOILET COMPARTMENTS



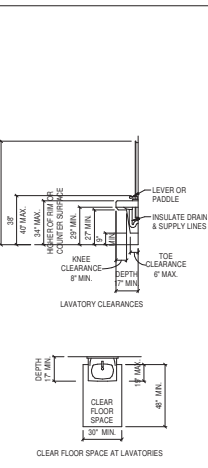
606 LAVATORIES & SINKS



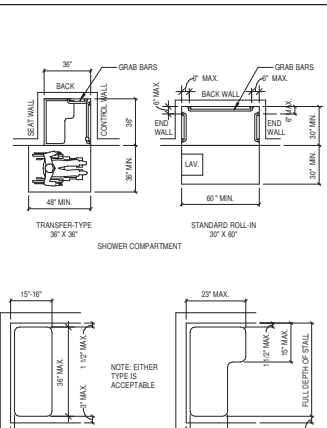
604.7 ACCESSORIES AND EQUIPMENT



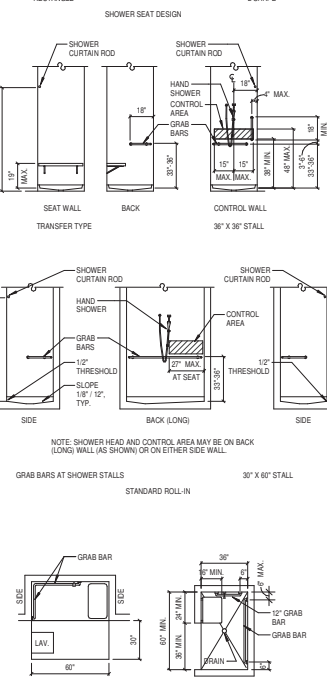
605 URINALS



606 LAVATORIES & SINKS



608. SHOWER COMPARTMENTS



608. SHOWER COMPARTMENTS

649 E SOUTH TEMPLE
SLC, UT 84102
801.355.5915
www.crsa-us.com

CRSA

REV. NO. COMMENTS DATE

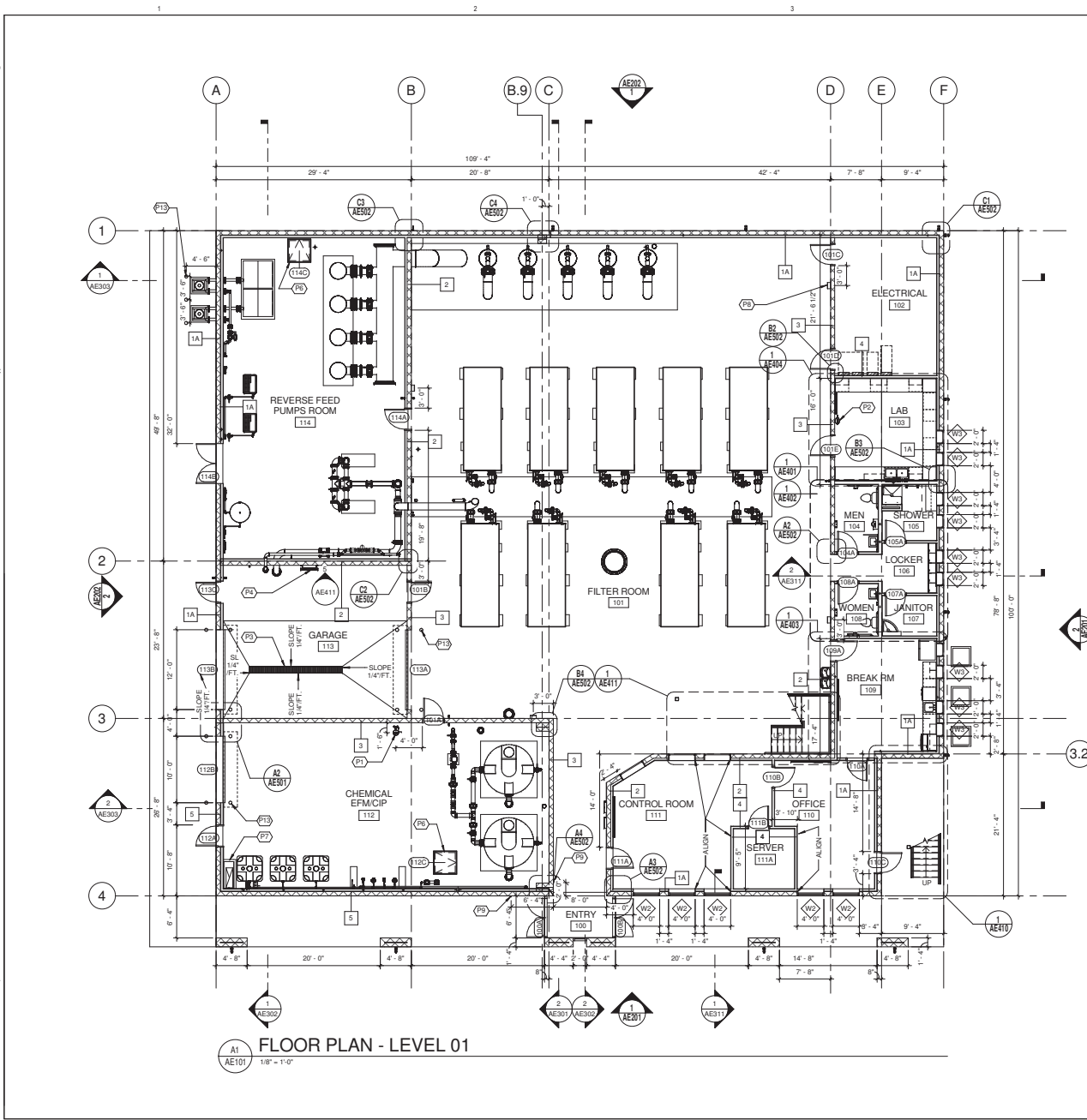
SUNRISE ENGINEERING
2036 LINCOLN AVE., SUITE 104
OGDEN, UTAH 84401
TEL 801-556-8109 - FAX 801-523-0990
www.sunrise-eng.com

OGDEN CITY
WATER TREATMENT PLANT RECONST.
ACCESSIBLE MOUNTING HEIGHTS AND DETAILS

30	DESIGNED	DATE	30	CHECKED	DATE
04655	DT	PNMC	JN	59	244

AE004

C:\Users\jdoonham\A_3003_01\PT_201.dwg
11/24/2017 12:01:17 PM



FLOOR PLAN - LEVEL 01
1/8" = 1'-0"

GENERAL NOTES

1. FOR MASONRY CONSTRUCTION, DIMENSIONS ARE TO THE OUTSIDE FACE OF THE MASONRY IN EXTERIOR COMPOSITE WALL AND TO JAMBES OF OPENINGS, UNLESS NOTED OTHERWISE.
2. DIMENSIONS FOR THE INTERIOR FRAMED PARTITIONS ARE TO BE FROM THE FACE OF STUD AND TO THE CENTERLINE OF OPENINGS, UNLESS NOTED OTHERWISE.
3. DOOR & WINDOW TYPES ARE SHOWN ON AE602.
4. WALL TYPES ARE SHOWN ON SHEET AE601. REVIEW ALL NOTES PRIOR TO CONSTRUCTION.
5. CODE REQUIREMENTS ARE SHOWN ON SHEETS AE001, AE002 AND AE003.
6. COORDINATE WITH STRUCTURAL FRAMING AND SHEAR WALL DRAWINGS FOR LOCATION OF COLUMNS, BEAMS, SHEAR WALLS, ETC.
7. SEE SHEET AE004 FOR ACCESSIBLE MOUNTING LOCATIONS AND HEIGHTS OF TOILET ROOM ACCESSORIES, PLUMBING FIXTURES, CABINETRY, COUNTERTOPS, ETC.
8. COORDINATE WITH ELECTRICAL DRAWINGS FOR ALL LIGHTING, POWER, AND DATA REQUIREMENTS.
9. SLOPE FLOOR TO DRAIN IN TOILET ROOMS, SHOWER ENCLOSURES AND LAUNDRY ROOM.
10. SEE STRUCTURAL DRAWINGS FOR THE LOCATIONS OF RECESSED SLABS.
11. SEE LIFE SAFETY PLAN SHEET AE002 AND AE003 FOR LOCATIONS AND TYPES OF FIRE EXTINGUISHERS AND CABINETS.
12. DIMENSIONS ARE SHOWN ON ENLARGED PLANS FOR BREAK ROOMS, TOILET ROOMS, JANITORS ROOM AND STAIRS.
13. SEE DETAIL A3/AE004 FOR TYP. DOOR LOCATION.
14. PROVIDE A KNOX BOX ENTRY SYSTEM, MODEL 3200 SERIES HINGE DOOR, PART NO. 3275. RECESSED. COLOR TO BE BLACK. INSTALL BOX (5) FEET ABOVE FINISHED GRADE. MAINTAIN CLEAR ACCESS TO THE BOX. SEE ELECTRICAL FOR ADDITIONAL REQUIREMENTS.
15. SEE SHEET AE003 FOR FINISH SCHEDULE.
16. SEE SHEET ?????? FOR EQUIPMENT SCHEDULE.

KEYNOTES

- P1 EMERGENCY SHOWER/EYE WASH
- P2 EMERGENCY EYE WASH
- P3 TRENCH DRAIN, SEE MECHANICAL
- P4 GALVANIZED LADDER ATTACHED TO WALL, SEE STRUCTURAL
- P6 FLOOR HATCH, SEE CIVIL
- P7 CONCRETE CURB, SEE STRUCTURAL
- P8 FIRE EXTINGUISHER AND CABINET, TYPICAL SEE AE502
- P9 ADA PUSH PAD LOCATION
- P13 BOLLARD, SEE DETAIL C1/AE504

649 E SOUTH TEMPLE
CRSA SLC, UT 84102
 801.355.5915
 www.crsa-us.com

REV. NO.	COMMENTS	DATE

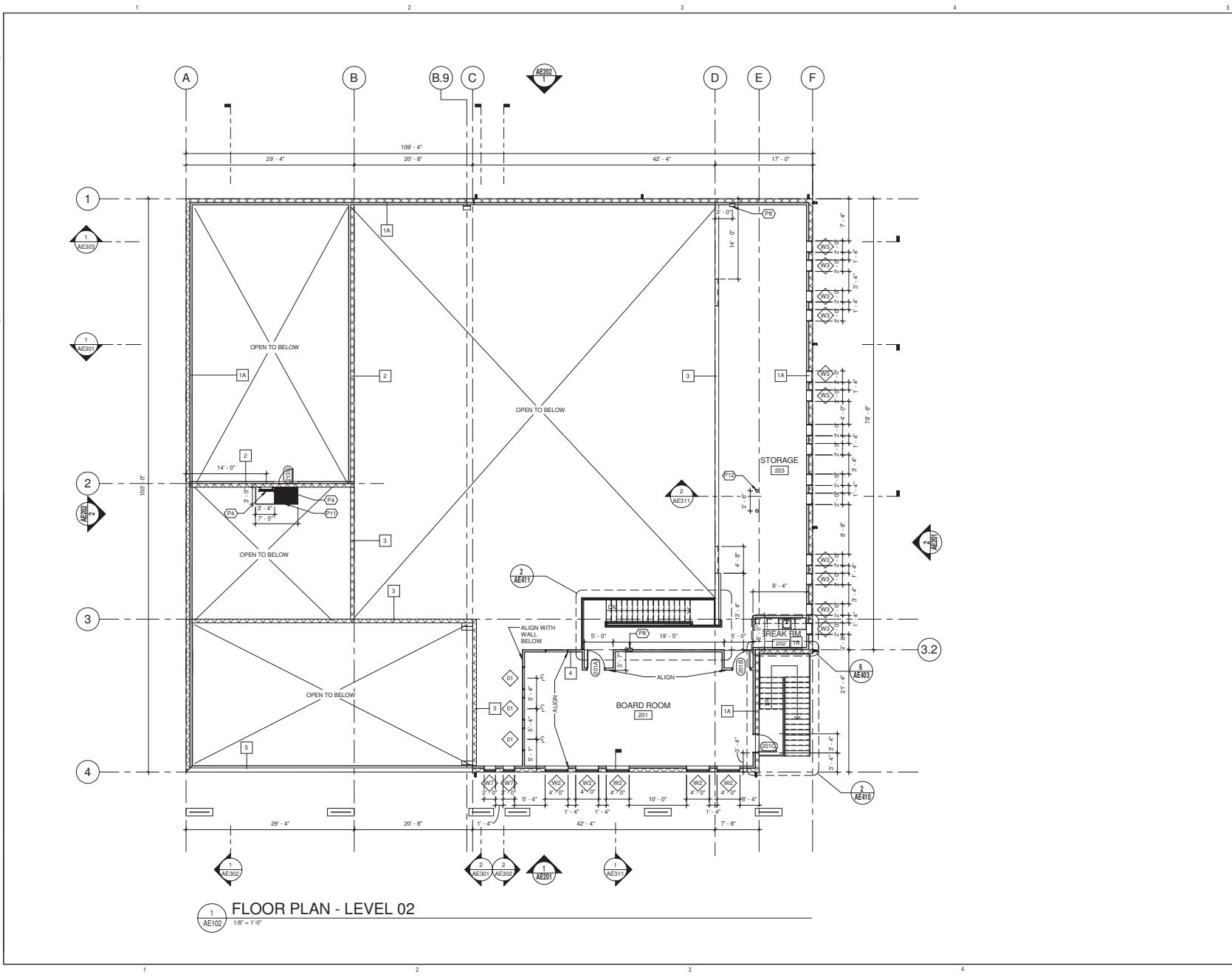
SUNRISE ENGINEERING
 2036 LINCOLN AVE., SUITE 104
 OGDEN, UTAH 84401
 TEL 801.656.8109 • FAX 801.523.0990
 www.sunrise-eng.com

OGDEN CITY
 WATER TREATMENT PLANT RECONST.

LEVEL 01 - FLOOR PLAN

NO.	ISSUED	BY	CHECKED	DATE	SHEET NO.
04655	DT	PNMC	JN	8/24	AE101

C:\Users\jdoonham\Documents\A_10033_01\WP_201_1.dwg
 11/28/14 12:52:27 PM



GENERAL NOTES

1. FOR MASONRY CONSTRUCTION, DIMENSIONS ARE TO THE OUTSIDE FACE OF THE MASONRY IN EXTERIOR COMPOSITE WALL AND TO JAMBS OF OPENINGS, UNLESS NOTED OTHERWISE.
2. DIMENSIONS FOR THE INTERIOR FRAMED PARTITIONS ARE TO BE FROM THE FACE OF STUD AND TO THE CENTERLINE OF OPENINGS, UNLESS NOTED OTHERWISE.
3. DOOR & WINDOW TYPES ARE SHOWN ON AE602.
4. WALL TYPES ARE SHOWN ON SHEET AE601. REVIEW ALL NOTES PRIOR TO CONSTRUCTION.
5. CODE REQUIREMENTS ARE SHOWN ON SHEETS AE001, AE002 AND AE003.
6. COORDINATE WITH STRUCTURAL FRAMING AND SHEAR WALL DRAWINGS FOR LOCATION OF COLUMNS, BEAMS, SHEAR WALLS, ETC.
7. SEE SHEET AE004 FOR ACCESSIBLE MOUNTING LOCATIONS AND HEIGHTS OF TOILET ROOM ACCESSORIES, PLUMBING FIXTURES, CABINETS, COUNTERTOPS, ETC.
8. COORDINATE WITH ELECTRICAL DRAWINGS FOR ALL LIGHTING, POWER, AND DATA REQUIREMENTS.
9. SLOPE FLOOR TO DRAIN IN TOILET ROOMS, SHOWER ENCLOSURES AND LAUNDRY ROOM.
10. SEE STRUCTURAL DRAWINGS FOR THE LOCATIONS OF RECESSED SLABS.
11. SEE LIFE SAFETY PLAN SHEET AE002 AND AE003 FOR LOCATIONS AND TYPES OF FIRE EXTINGUISHERS AND CABINETS.
12. DIMENSIONS ARE SHOWN ON ENLARGED PLANS FOR BREAK ROOMS, TOILET ROOMS, JANITORS ROOM AND STAIRS.
13. SEE DETAIL A3/AE504 FOR TYP. DOOR LOCATION.
14. PROVIDE A KNIX BOX ENTRY SYSTEM MODEL 3000 SERIES HINGE DOOR, PART NO. 3275. RECESSED, COLOR TO BE BLACK. INSTALL BOX (5 FEET ABOVE FINISHED GRADE. MAINTAIN CLEAR ACCESS TO THE BOX. SEE ELECTRICAL FOR ADDITIONAL REQUIREMENTS.
15. SEE SHEET AE603 FOR FINISH SCHEDULE.
16. SEE SHEET ?????? FOR EQUIPMENT SCHEDULE.

KEYNOTES

- P4 GALVANIZED LADDER ATTACHED TO WALL, SEE STRUCTURAL
- P8 FIRE EXTINGUISHER AND CABINET, TYPICAL SEE AE502
- P11 GALVANIZED FRAMING AND LANDING FOR ROOF ACCESS, SEE STRUCTURAL
- P12 SURFACE MOUNTED BOLLARD, FIELD VARIY LOCATION OF MECHANICAL UNIT, SEE STRUCTURAL

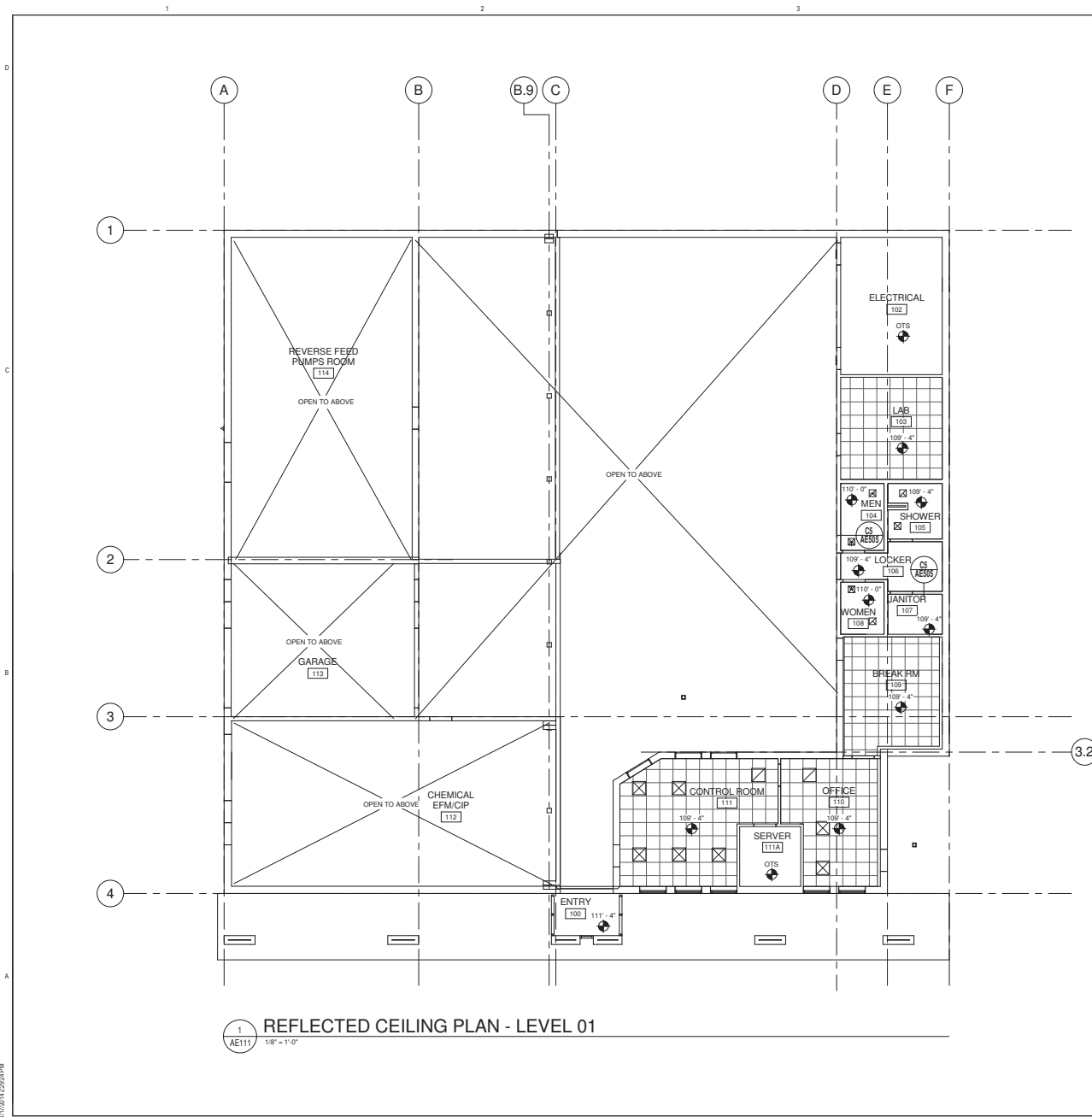
649 E SOUTH TEMPLE
CRSA SLC, UT 84102
 801.355.5915
 www.crsa-us.com

REV. NO.	COMMENTS	DATE

OGDEN CITY
 WATER TREATMENT PLANT RECONST.
LEVEL 02 - FLOOR PLAN












REV. NO.	DESIGNED	DRAWN	CHECKED	SHEET NO.	SHEET TOTAL
04655	DT	PN/MC	JN	61	244

C:\shared\Documents_A_10033_01\MP_201_1.dwg
 1/18/2014 2:52:57PM



1 REFLECTED CEILING PLAN - LEVEL 01
 1/AE111 1/8" = 1'-0"

CEILING LEGEND


-  GYPSUM BOARD - PAINTED
-  OPEN TO STRUCTURE
-  ACOUSTICAL CEILING TILE 2' x 2'
-  CEILING HEIGHT
-  OTS OPEN TO STRUCTURE
-  LIGHT FIXTURES - RECESSED, SURFACE MOUNTED OR SUSPENDED
-  EXTERIOR LIGHT FIXTURE
-  CAN LIGHT (RATED FOR WET LOCATIONS IN SHOWER)
-  EXIT SIGN, SEE ELECTRICAL
-  RETURN AIR, SEE MECH.
-  SUPPLY AIR, SEE MECH.

GENERAL NOTES

1. FOR TYPICAL CEILING GRID BRACING DETAILS SEE AE505.

CRSA 649 E SOUTH TEMPLE
 SLC, UT 84102
 801.355.5915
 www.crsa-us.com

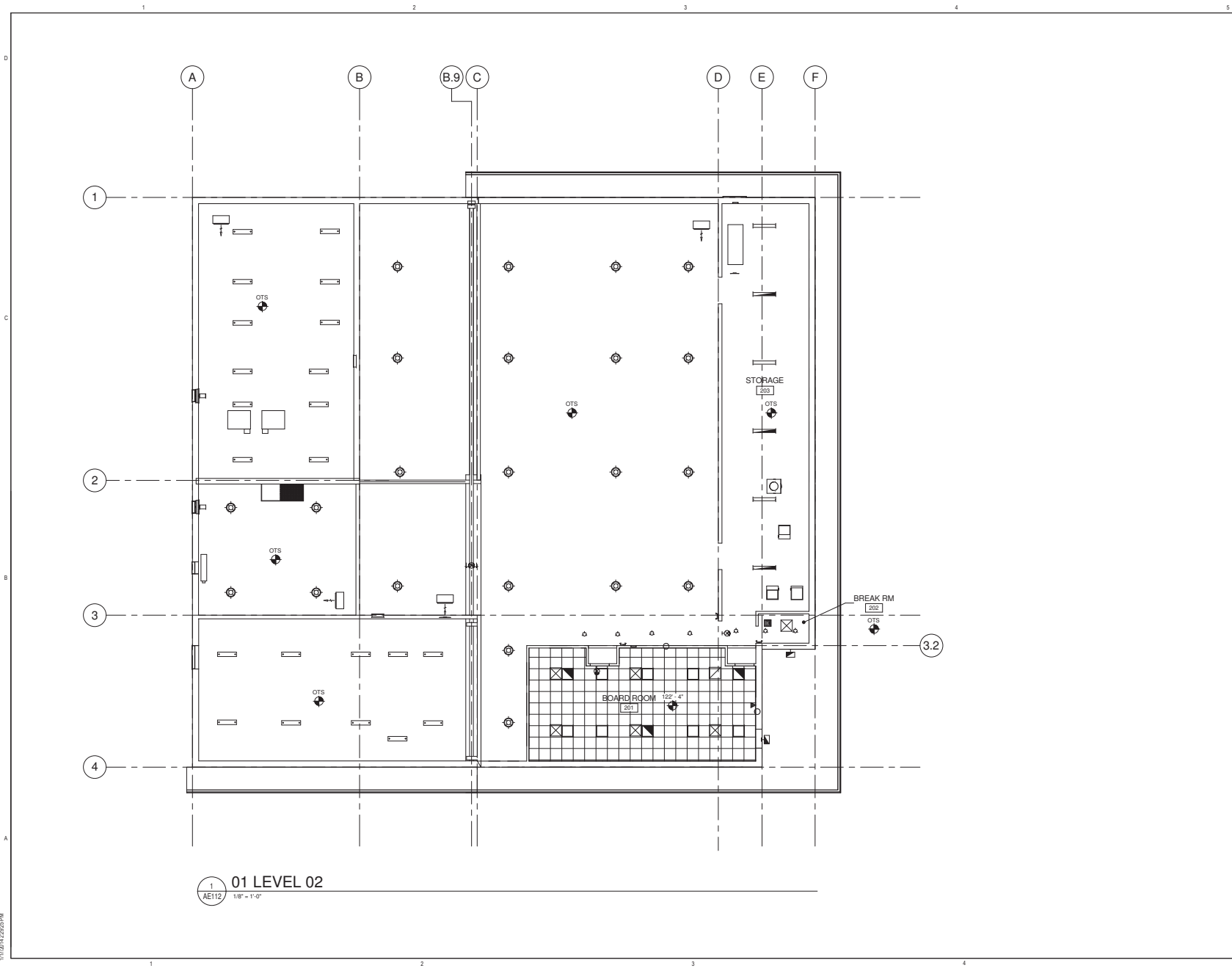
REV. NO.	COMMENTS	DATE








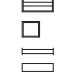
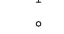

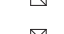


SUNRISE ENGINEERING
 2036 LINCOLN AVE., SUITE 104
 OGDEN, UTAH 84401
 TEL 801.556.8109 • FAX 801.523.0990
 www.sunrise-eng.com

OGDEN CITY
 WATER TREATMENT PLANT RECONST.
 LEVEL 01 - REFLECTED CEILING PLAN

REV. NO.	DESIGNED	DRAWN	CHECKED	SHEET NO.	TOTAL SHEETS
04655	DT	PNMC	JN	82 of 244	AE111



CEILING LEGEND

-  GYPSUM BOARD - PAINTED
-  OPEN TO STRUCTURE
-  ACOUSTICAL CEILING TILE 2' x 2'
-  CEILING HEIGHT
-  OTS OPEN TO STRUCTURE
-  LIGHT FIXTURES - RECESSED, SURFACE MOUNTED OR SUSPENDED
-  EXTERIOR LIGHT FIXTURE
-  CAN LIGHT (RATED FOR WET LOCATIONS IN SHOWER)
-  EXT SIGN, SEE ELECTRICAL
-  RETURN AIR, SEE MECH.
-  SUPPLY AIR, SEE MECH.

GENERAL NOTES

1. FOR TYPICAL CEILING GRID BRACING DETAILS SEE AE505.

CRSA 649 E SOUTH TEMPLE
 SLC, UT 84102
 801.355.5915
 www.crsa-us.com

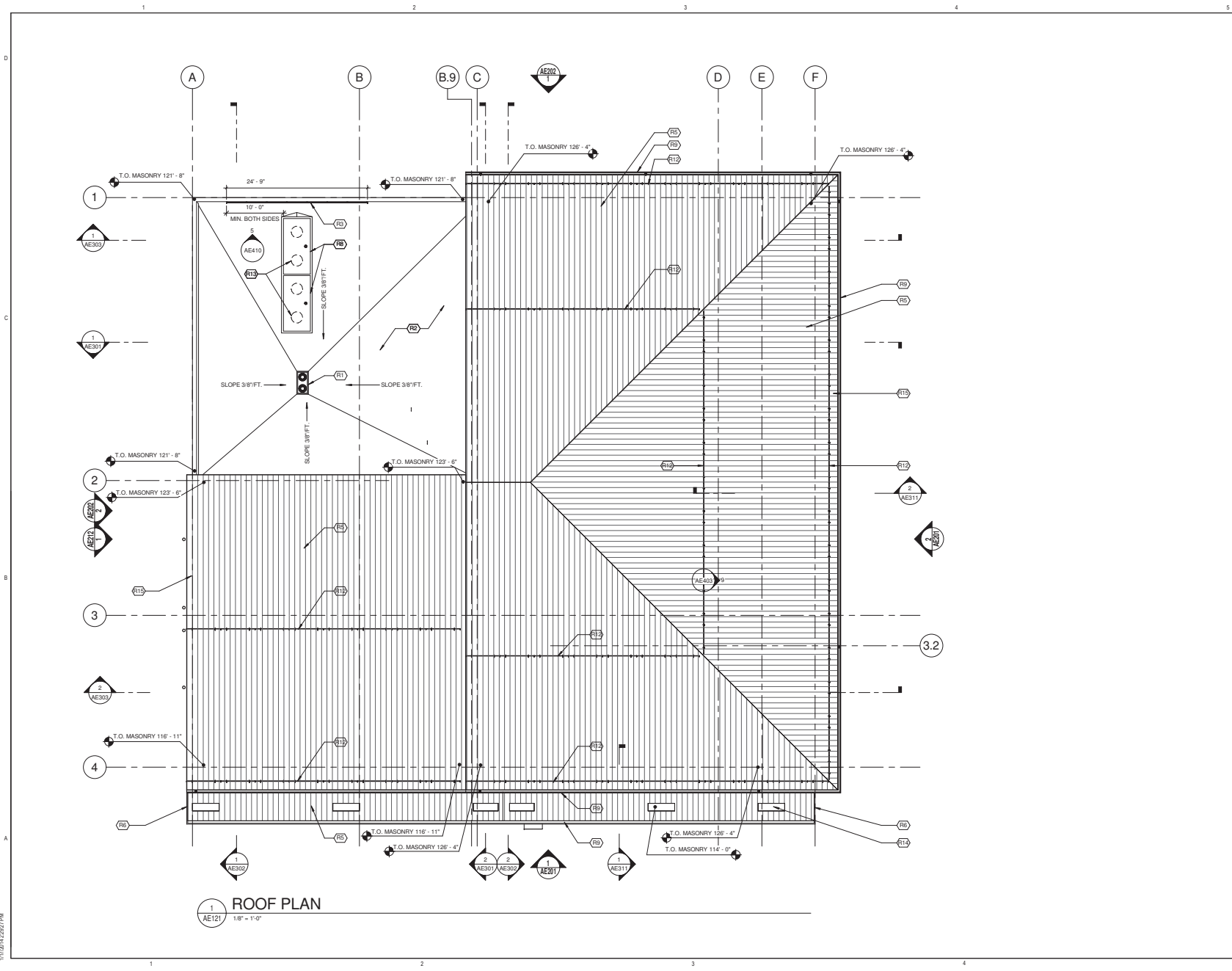
REV. NO.	COMMENTS	DATE

SUNRISE ENGINEERING
 2036 LINCOLN AVE., SUITE 104
 OGDEN, UTAH 84401
 TEL 801.556.8109 • FAX 801.523.0990
 www.sunrise-eng.com

OGDEN CITY
 WATER TREATMENT PLANT RECONST.
 LEVEL 02 - REFLECTED CEILING PLAN

BY	DESIGNED	DRAWN	CHECKED	SHEET NO.	TOTAL SHEETS
04655	DT	PN/MC	JN	83 of 244	AE112

C:\shared\Documents\A_1003_01\MP_201_1.dwg
 1/18/14 12:25:24 PM



1 ROOF PLAN
 1/8" = 1'-0"

GENERAL NOTES

- NOT ALL ROOFTOP MECHANICAL EQUIPMENT IS SHOWN. SEE MECHANICAL AND ARCHITECTURAL ROOFTOP PLANS.
- FOR LIGHTING PROTECTION LAYOUT SEE ELECTRICAL EK101, EK102 AND EK501 AND EK502.

KEYNOTES

- R1 ROOF DRAIN
- R2 TPO ROOF SYSTEM
- R3 GALVANIZED GUARDRAIL. INSTALL SIDE MOUNTED GALVANIZED BRACKET TO BRICK FACE. SEE STRUCTURAL.
- R5 STANDING SEAM METAL ROOF SYSTEM. INCLUDE RIGID INSULATION SLOPE TO DRAIN
- R6 CANOPY SYSTEM. SEE STRUCTURAL AND AE506
- R8 ROOF HATCHES. ALIGN ROOF HATCH OPENING ON CENTER WITH PUMPS BELOW.
- R9 GUTTER AND DOWNSPOUT
- R12 SNOW GUARD. SEE SPECIFICATION
- R13 PUMPS BELOW. FIELD VERIFY LOCATION
- R14 PRE-FINISHED METAL CAP FLASHING, TYPICAL
- R15 LIGHTING PROTECTION SYSTEM. SEE ELECTRICAL

CRSA 649 E SOUTH TEMPLE
 SLC, UT 84102
 801.355.5915
 www.crsa-us.com

REV. NO.	COMMENTS	DATE

SUNRISE ENGINEERING
 2036 LINCOLN AVE., SUITE 104
 OGDEN, UTAH 84401
 TEL 801.556.8109 • FAX 801.523.0990
 www.sunrise-eng.com

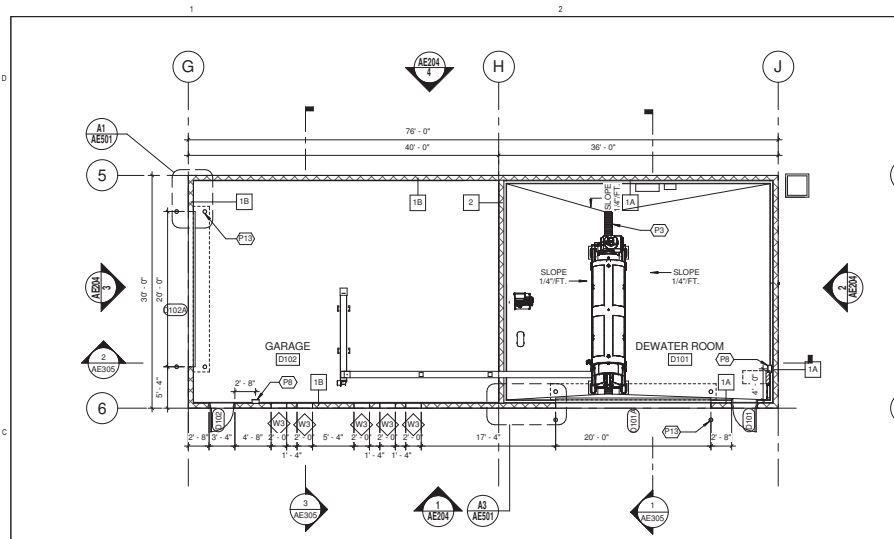
OGDEN CITY
 WATER TREATMENT PLANT RECONST.

ROOF PLAN

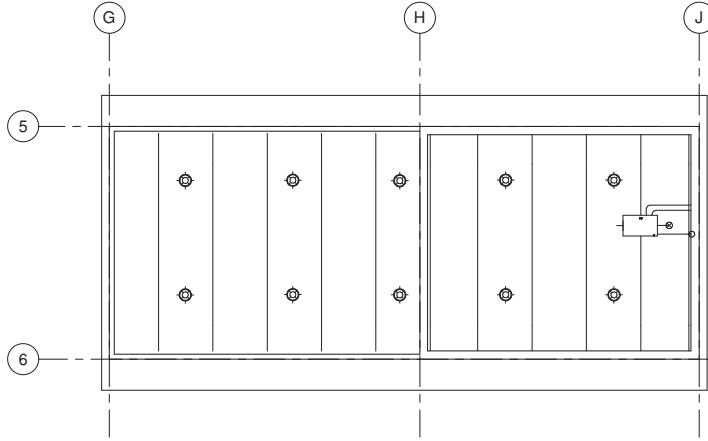
BY	DESIGNED	CHECKED	IN CHARGE	DATE	SHEET NO.
04655	DT	PN/MC	JN	64	244

AE121

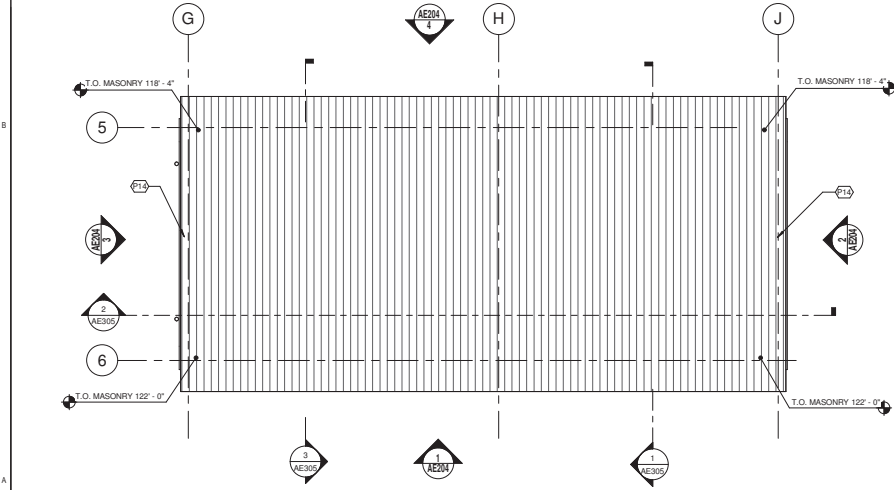
C:\shared\Documents_A\0303_07\07_2011\p1.rvt
 11/18/11 12:52:17 PM



1 FLOOR PLAN - LEVEL 01 - DEWATER
1/8" = 1'-0"



3 RCP - LEVEL 01 - DEWATER
1/8" = 1'-0"



2 ROOF PLAN
1/8" = 1'-0"

GENERAL NOTES

1. NOT ALL ROOFTOP MECHANICAL EQUIPMENT IS SHOWN. SEE MECHANICAL AND ARCHITECTURAL ROOFTOP PLANS.
2. FOR LIGHTING PROTECTION LAYOUT SEE ELECTRICAL EK101, EK102 AND EK501 AND EK502.

KEYNOTES

- P3 TRENCH DRAIN, SEE MECHANICAL
- P8 FIRE EXTINGUISHER AND CABINET, TYPICAL SEE AE502
- P13 BOLLARD, SEE DETAIL C1/AE504
- P14 LIGHTING PROJECTION SYSTEM, SEE ELECTRICAL

CRSA 649 E SOUTH TEMPLE
S.L.C., UT 84102
801.355.5915
www.crsa-us.com

REV. NO.	COMMENTS	DATE

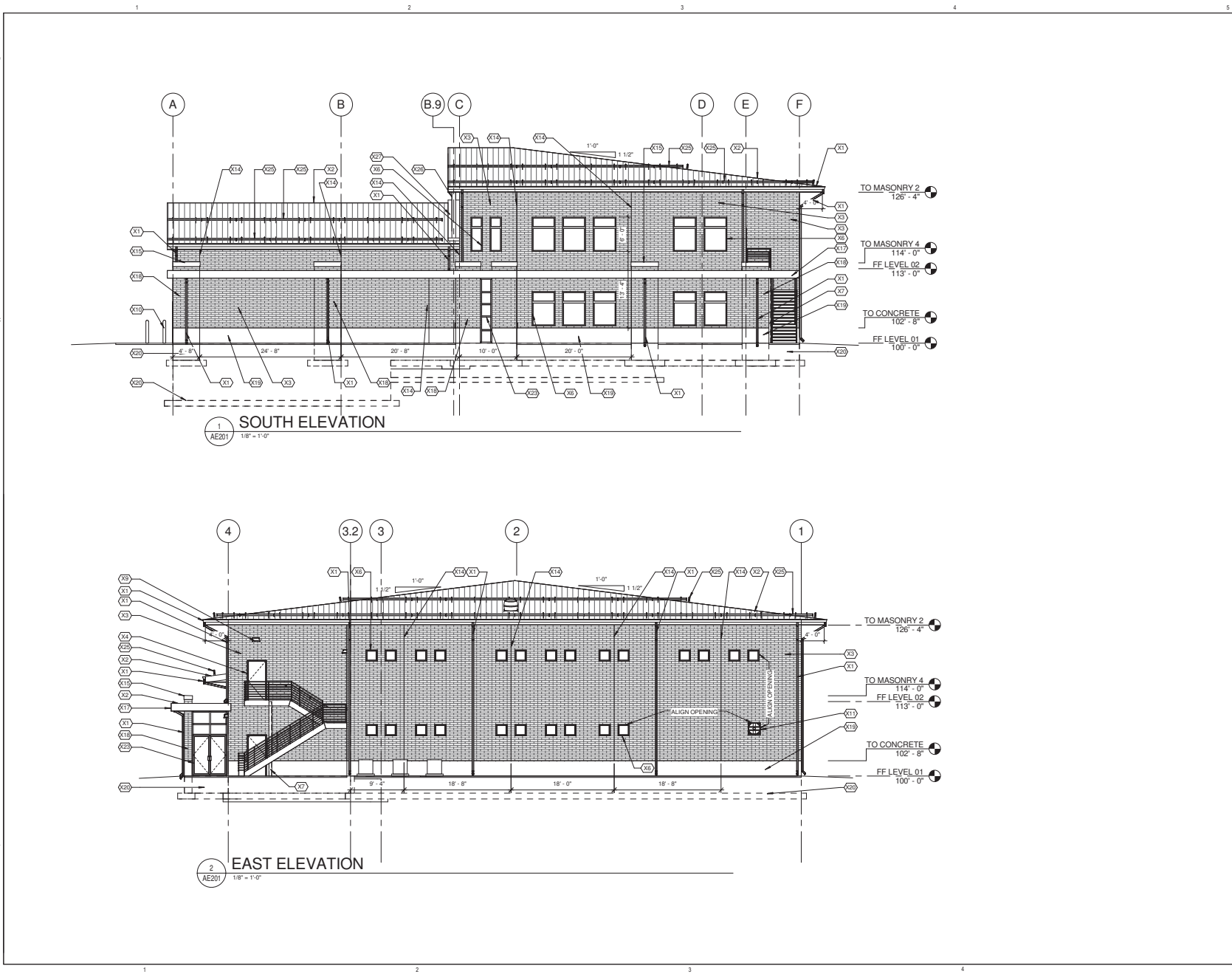
SUNRISE ENGINEERING
2036 LINCOLN AVE., SUITE 104
OGDEN, UTAH 84401
TEL 801-556-8109 • FAX 801-523-0990
www.sunrise-eng.com

OGDEN CITY
WATER TREATMENT PLANT RECONSTR.

FLOOR & ROOF PLAN - DEWATER

REV. NO.	DESIGNED	DRAWN	CHECKED	DATE	SHEET NO.
04655	DT	PN/MC	JN	85	244

AE122



GENERAL NOTES

- NOT ALL ROOFTOP MECHANICAL EQUIPMENT IS SHOWN. SEE MECHANICAL AND ARCHITECTURAL ROOFTOP PLANS.
- PROVIDE TIGHT JOINTS W/ CONT. SEALANTS & BACKER ROD AROUND PENETRATIONS THROUGH MASONRY VENEER.
- DIMENSIONS SHOWN ON MASONRY COURSING ARE NOMINAL U.N.O.
- CONTINUE ALL MATERIALS & PATTERNING TO SURFACE NOT SHOWN IN EVALUATION U.N.O.

KEYNOTES

- X1 GUTTER AND DOWNSPOUT
- X2 STANDING SEAM METAL ROOF WITH VERT. JOINTS
- X3 ATLAS BRICK
- X4 HOLLOW METAL DOOR AND FRAME, SEE DOOR SCHEDULE AE603
- X6 ALUMINUM WINDOW SYSTEM, SEE DOOR AND WINDOW SCHEDULE AE603
- X7 STEEL COLUMN, SEE STRUCTURAL
- X9 LIGHT FIXTURE, SEE ELECTRICAL
- X10 BOLLARD, SEE AE501
- X11 LOUVER, SEE MECHANICAL SCHEDULE FOR SIZE
- X14 MASONRY VERTICAL CONTROL JOINT, SEE STRUCTURAL
- X15 PRE-FINISHED METAL PARAPET CAP
- X17 STEEL CANOPY
- X18 ATLAS BRICK COLUMN, TYPICAL
- X19 CONCRETE BASE WALL, SEE STRUCTURAL
- X20 LINE OF FOOTING AND FOUNDATION BELOW, SEE STRUCTURAL
- X23 ALUMINUM STORE FRONT AND GLASS DOOR SYSTEM
- X25 SNOW GUARD
- X26 EXPOSED STEEL TRUSS, SEE STRUCTURAL
- X27 SINGLE PLY MEMBRANE ROOF SYSTEM, SEE AE506

CRSA 649 E SOUTH TEMPLE
 SLC, UT 84102
 801.355.5915
 www.crsa-us.com

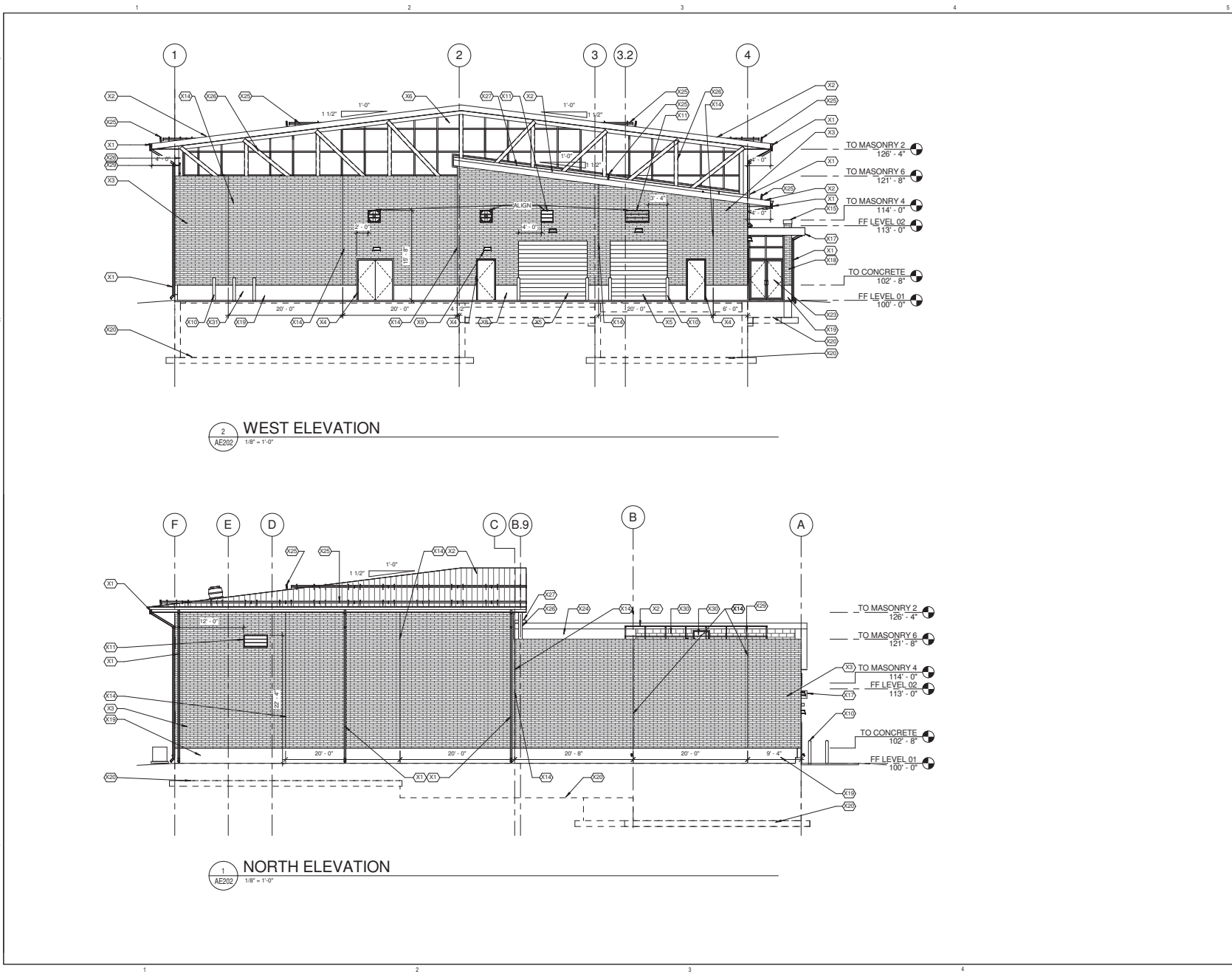
REV. NO.	COMMENTS	DATE

SUNRISE ENGINEERING
 2036 LINCOLN AVE., SUITE 104
 OGDEN, UTAH 84401
 TEL 801.556.8109 • FAX 801.523.0990
 www.sunrise-eng.com

OGDEN CITY
 WATER TREATMENT PLANT RECONST.
 EXTERIOR ELEVATIONS

REV. NO.	DESIGNED	DRAWN	CHECKED	DATE	PROJECT NO.
04655	DT	PN/MC	JN	06 - 244	AE201

C:\Users\j\Documents\A_10033_01\WP_201_L\part4
 1/17/2014 2:20:17 PM



2 WEST ELEVATION
AE202 1/8" = 1'-0"

1 NORTH ELEVATION
AE202 1/8" = 1'-0"

GENERAL NOTES

- NOT ALL ROOFTOP MECHANICAL EQUIPMENT IS SHOWN. SEE MECHANICAL AND ARCHITECTURAL ROOFTOP PLANS.
- PROVIDE TIGHT JOINTS W/ CONT. SEALANTS & BACKER ROD AROUND PENETRATIONS THROUGH MASONRY VENEER.
- DIMENSIONS SHOWN ON MASONRY COURSING ARE NOMINAL U.N.O.
- CONTINUE ALL MATERIALS & PATTERNING TO SURFACE NOT SHOWN IN EVALUATION U.N.O.

KEYNOTES

- X1 GUTTER AND DOWNSPOUT
- X2 STANDING SEAM METAL ROOF WITH VERT. JOINTS
- X3 ATLAS BRICK
- X4 HOLLOW METAL DOOR AND FRAME, SEE DOOR SCHEDULE AE603
- X5 OVERHEAD ROLL-UP DOOR, SEE DOOR SCHEDULE AE603
- X6 ALUMINUM WINDOW SYSTEM, SEE DOOR AND WINDOW SCHEDULE AE603
- X8 HOSE BIB, SEE MECHANICAL
- X9 LIGHT FIXTURE, SEE ELECTRICAL
- X10 BOLLARD, SEE AE501
- X11 LOUVER, SEE MECHANICAL SCHEDULE FOR SIZE
- X14 MASONRY VERTICAL CONTROL JOINT, SEE STRUCTURAL
- X15 PRE-FINISHED METAL PARAPET CAP
- X17 STEEL CANOPY
- X18 ATLAS BRICK COLUMN, TYPICAL
- X19 CONCRETE BASE WALL, SEE STRUCTURAL
- X20 LINE OF FOOTING AND FOUNDATION BELOW, SEE STRUCTURAL
- X23 ALUMINUM STORE FRONT AND GLASS DOOR SYSTEM
- X24 GALVANIZED METAL SIDING
- X25 SNOW GUARD
- X26 EXPOSED STEEL TRUSS, SEE STRUCTURAL
- X27 SINGLE PLY MEMBRANE ROOF SYSTEM, SEE AE506
- X29 STAINLESS STEEL GUARDRAIL
- X30 CMU BLOCK, SEE WALL TYPES AE601
- X31 MECHANICAL UNIT, SEE MECHANICAL

CRSA 649 E SOUTH TEMPLE
S.L.C., UT 84102
801.355.5915
www.crsa-us.com

REV. NO.	COMMENTS	DATE

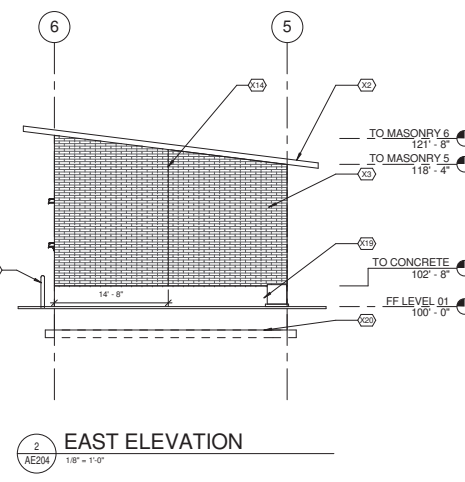
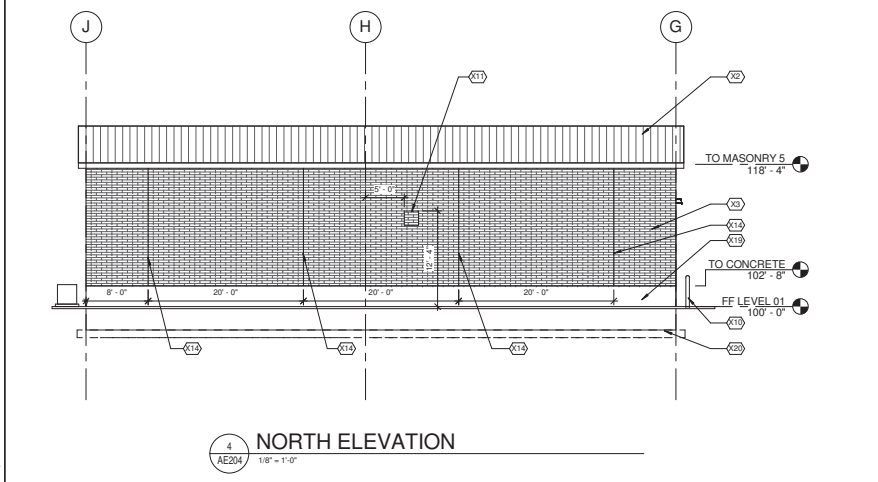
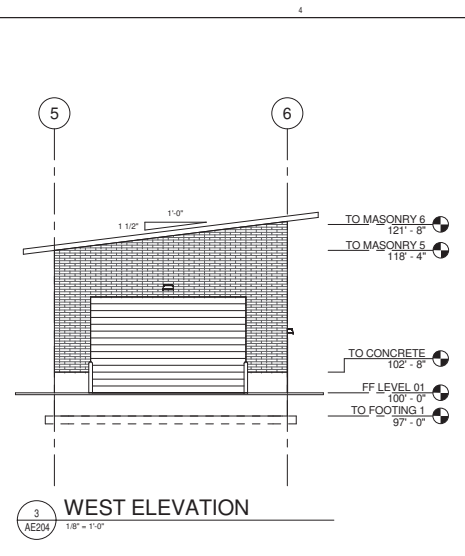
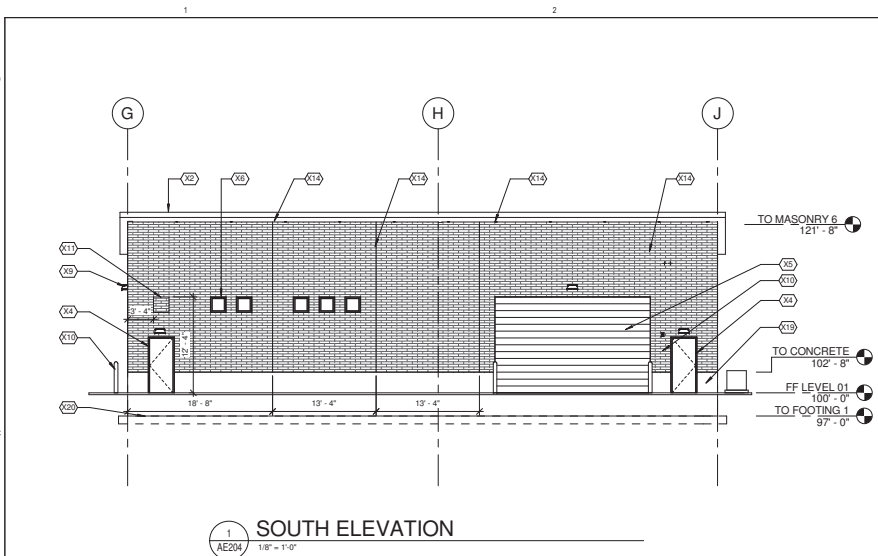
SUNRISE ENGINEERING
2036 LINCOLN AVE., SUITE 104
OGDEN, UTAH 84401
TEL 801-556-8109 • FAX 801-523-0990
www.sunrise-eng.com

OGDEN CITY
WATER TREATMENT PLANT RECONST.
EXTERIOR ELEVATIONS

REV. NO.	DESIGNED	DRAWN	CHECKED	SHEET NO.	TOTAL SHEETS
04655	DT	PNMC	JN	67	244

AE202

C:\shared\Documents_A\3033_01\WP_201_1.ppt
 1/18/2014 2:54:17 PM



GENERAL NOTES

1. NOT ALL ROOFTOP MECHANICAL EQUIPMENT IS SHOWN. SEE MECHANICAL AND ARCHITECTURAL ROOFTOP PLANS.
2. PROVIDE TIGHT JOINTS W/ CONT. SEALANTS & BACKER ROD AROUND PENETRATIONS THROUGH MASONRY VENEER.
3. DIMENSIONS SHOWN ON MASONRY COURSING ARE NOMINAL U.N.O.
4. CONTINUE ALL MATERIALS & PATTERNING TO SURFACE NOT SHOWN IN EVALUATION U.N.O.

KEYNOTES

- X2 STANDING SEAM METAL ROOF WITH VERT. JOINTS
- X3 ATLAS BRICK
- X4 HOLLOW METAL DOOR AND FRAME, SEE DOOR SCHEDULE AE603
- X5 OVERHEAD ROLL-UP DOOR, SEE DOOR SCHEDULE AE603
- X6 ALUMINUM WINDOW SYSTEM, SEE DOOR AND WINDOW SCHEDULE AE603
- X8 LIGHT FIXTURE, SEE ELECTRICAL
- X10 BOLLARD, SEE AE501
- X11 LOUVER, SEE MECHANICAL SCHEDULE FOR SIZE
- X14 MASONRY VERTICAL CONTROL JOINT, SEE STRUCTURAL
- X19 CONCRETE BASE WALL, SEE STRUCTURAL
- X20 LINE OF FOOTING AND FOUNDATION BELOW, SEE STRUCTURAL

649 E SOUTH TEMPLE
CRSA SLC, UT 84102
 801.355.5915
 www.crsa-us.com

REV. NO.	COMMENTS	DATE

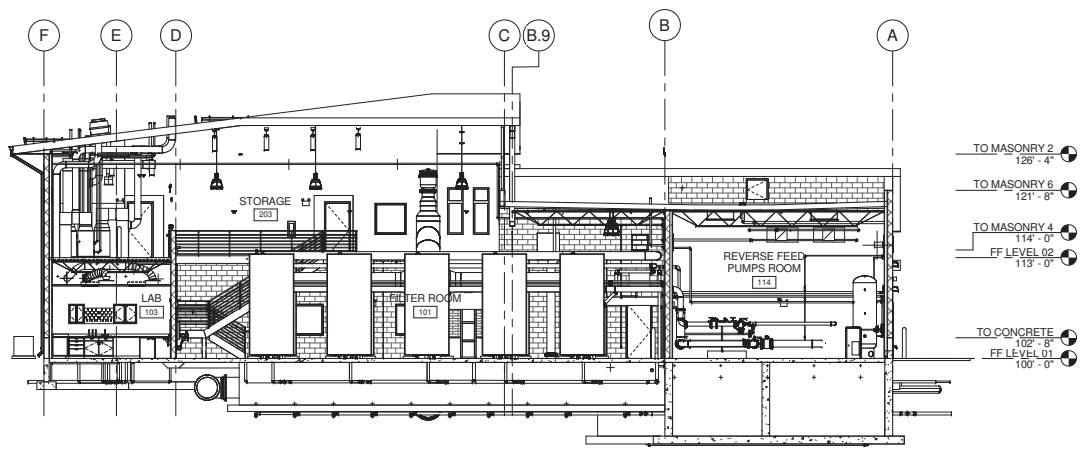
SUNRISE ENGINEERING
 2036 LINCOLN AVE., SUITE 104
 OGDEN, UTAH 84401
 TEL 801-556-8109 • FAX 801-523-0990
 www.sunrise-eng.com

OGDEN CITY

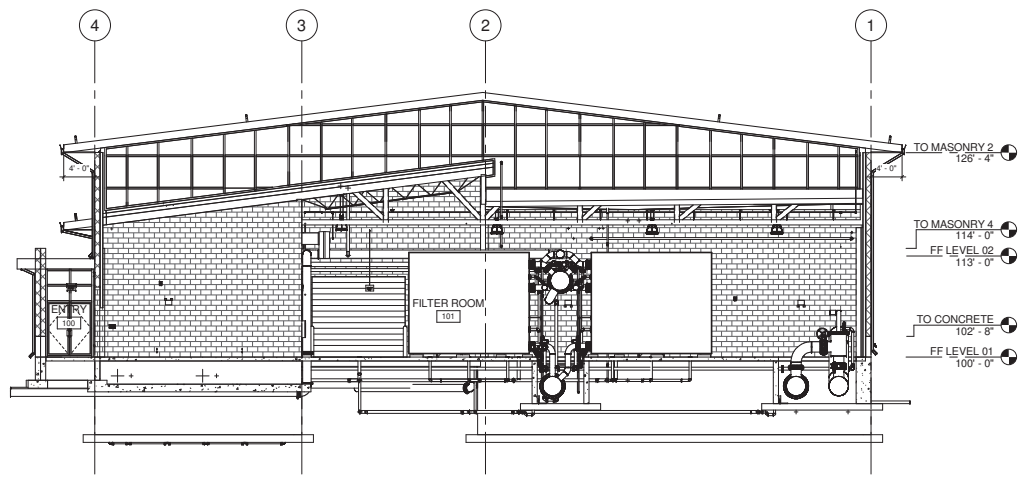
WATER TREATMENT PLANT RECONSTR.
 EXTERIOR ELEVATIONS - DEWATER

REV. NO.	DESIGNED	DRAWN	CHECKED	SHEET NO.	TOTAL SHEETS
04655	DT	PN/MC	JN	88	244

AE204



1 SOUTH BUILDING SECTION
18" = 1'-0"



2 WEST BUILDING SECTION
18" = 1'-0"

CRSA 649 E SOUTH TEMPLE
SLC, UT 84102
801.355.5915
www.crsa-us.com

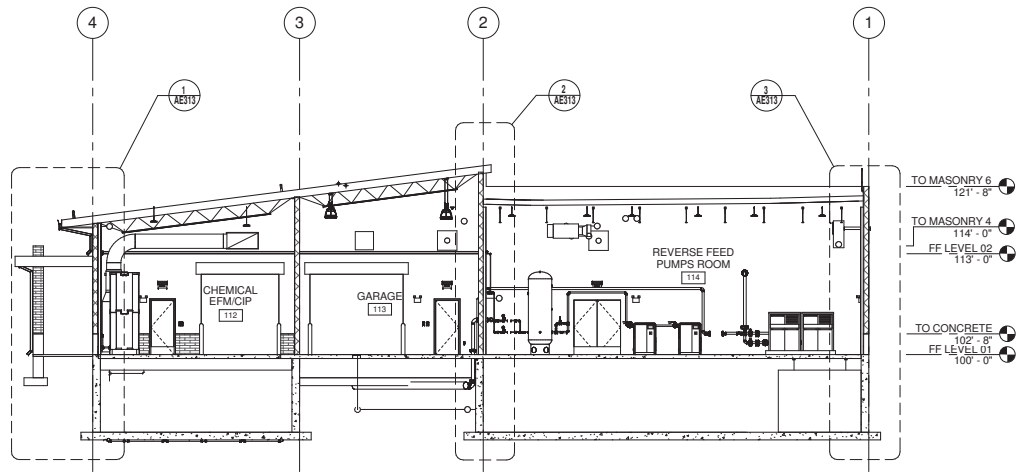
REV. NO.	COMMENTS	DATE

SUNRISE ENGINEERING
2036 LINCOLN AVE., SUITE 104
OGDEN, UTAH 84401
TEL 801-556-8109 • FAX 801-523-0990
www.sunrise-eng.com

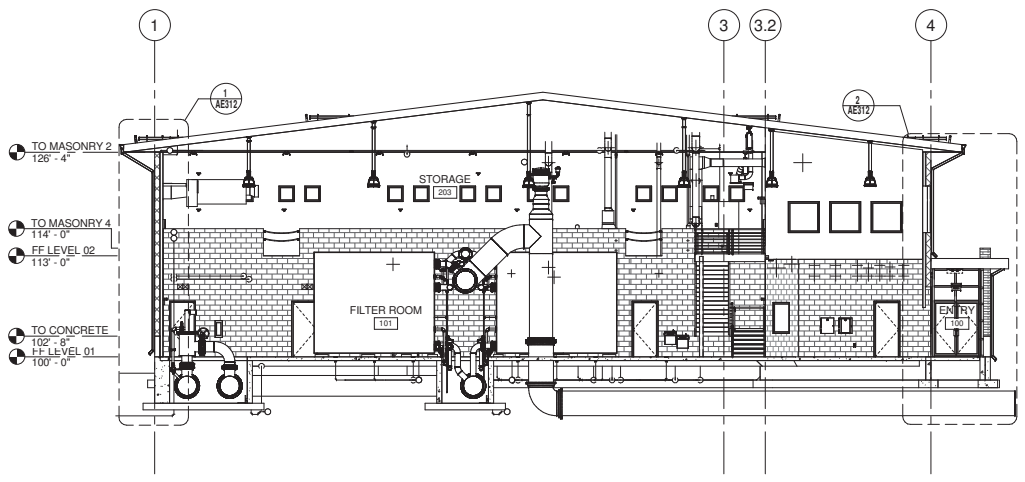
OGDEN CITY
WATER TREATMENT PLANT RECONSTR.
BUILDING SECTION

REV. NO.	DESIGNED	DRAWN	CHECKED	SHEET NO.	TOTAL SHEETS
04655	DT	PNMC	JN	89	of 244

AE301



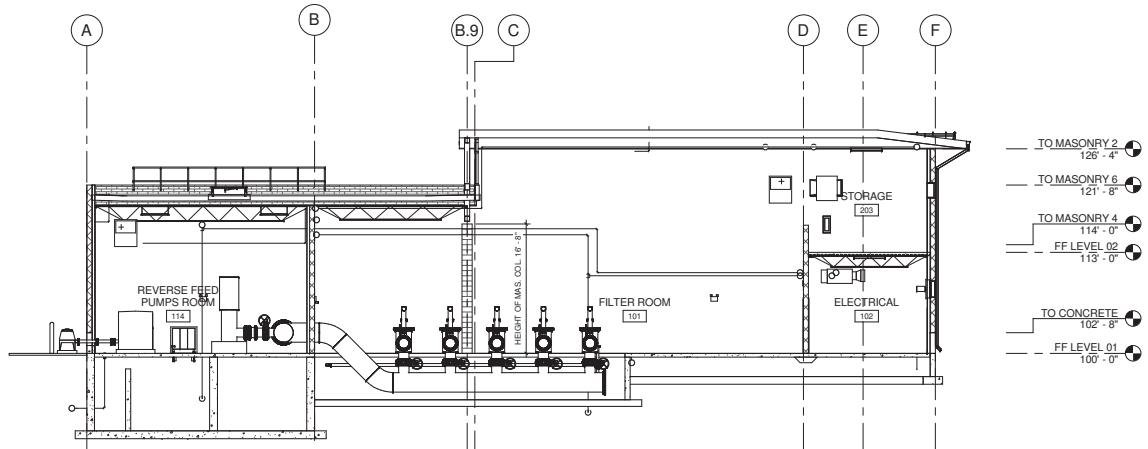
1 WEST BUILDING SECTION @ GRID B
1/8" = 1'-0"



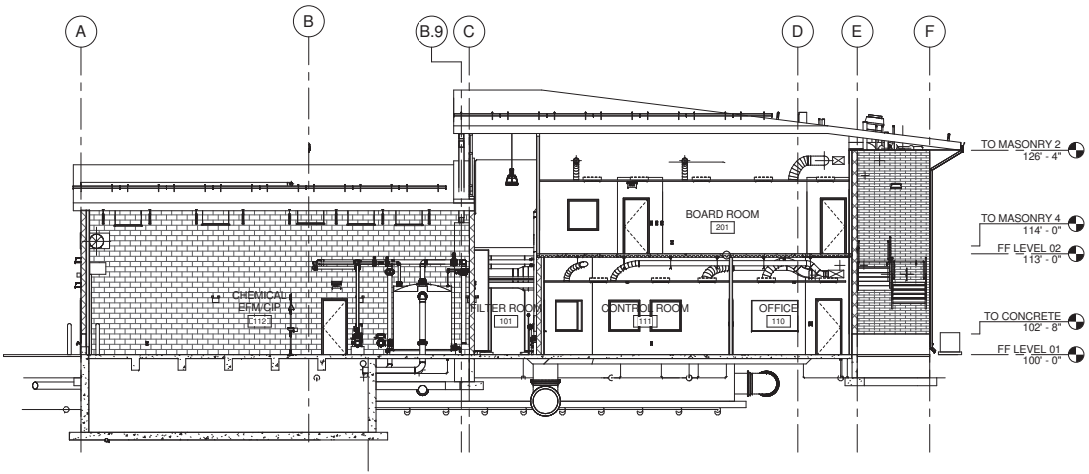
2 EAST BUILDING SECTION
1/8" = 1'-0"

CRSA		649 E SOUTH TEMPLE SLC, UT 84102 801.355.5915 www.crsa-us.com	
REV. NO.	COMMENTS	DATE	
2036 LINCOLN AVE., SUITE 104 OGDEN, UTAH 84401 TEL 801-556-8109 • FAX 801-523-0990 www.sunrise-eng.com			
OGDEN CITY WATER TREATMENT PLANT RECONST. BUILDING SECTIONS			
DR. NO.	DRAWN	CHECKED	DATE
04655	DT	PNMC	JN 70 of 244
			AE302

C:\projects\Documents\A_10033_01\WP_201_1.ppt
 1/17/2014 2:00:07 PM



1 4 - NORTH BUILDING SECTION
1/8" = 1'-0"



2 4 - NORTH BUILDING SECTION 2
1/8" = 1'-0"

		649 E SOUTH TEMPLE	
		S.L.C. UT 84102	
		801.355.5915	
		www.crsa-us.com	
REV. NO.	COMMENTS	DATE	
		2036 LINCOLN AVE., SUITE 104 OGDEN, UTAH 84401 TEL 801-556-8109 • FAX 801-523-0990 www.sunrise-eng.com	
OGDEN CITY			
WATER TREATMENT PLANT RECONST.			
BUILDING SECTIONS			
BY NO.	DESIGNED	IN CHARGE	CHECKED
04655	DT	PNMC	JN
SHEET NO.		SHEET NO.	
71 of 244		AE303	

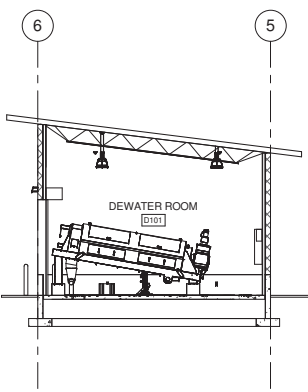
C:\shared\Documents_A\3033_01.rvt_2011.dwg
 1/18/11 12:00:00 PM

TO MASONRY 6
121'-8"

TO MASONRY 5
118'-4"

TO CONCRETE
102'-8"

FF LEVEL 01
100'-0"



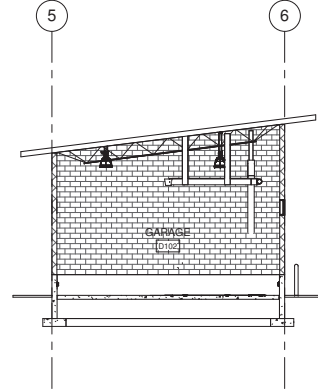
1 WEST BUILDING SECTION
AE305 1/8" = 1'-0"

TO MASONRY 6
121'-8"

TO MASONRY 5
118'-4"

TO CONCRETE
102'-8"

FF LEVEL 01
100'-0"

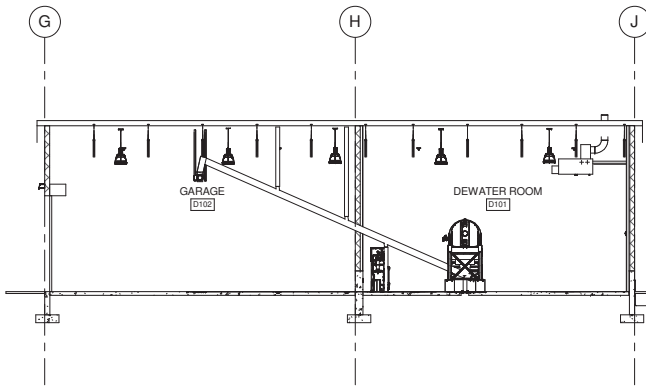


3 EAST BUILDING SECTION
AE305 1/8" = 1'-0"

TO MASONRY 5
118'-4"

TO CONCRETE
102'-8"


FF LEVEL 01
100'-0"



2 NORTH BUILDING SECTION
AE305 1/8" = 1'-0"

CRSA 649 E SOUTH TEMPLE
SLC, UT 84102
801.355.5915
www.crsa-us.com

REV. NO.	COMMENTS	DATE



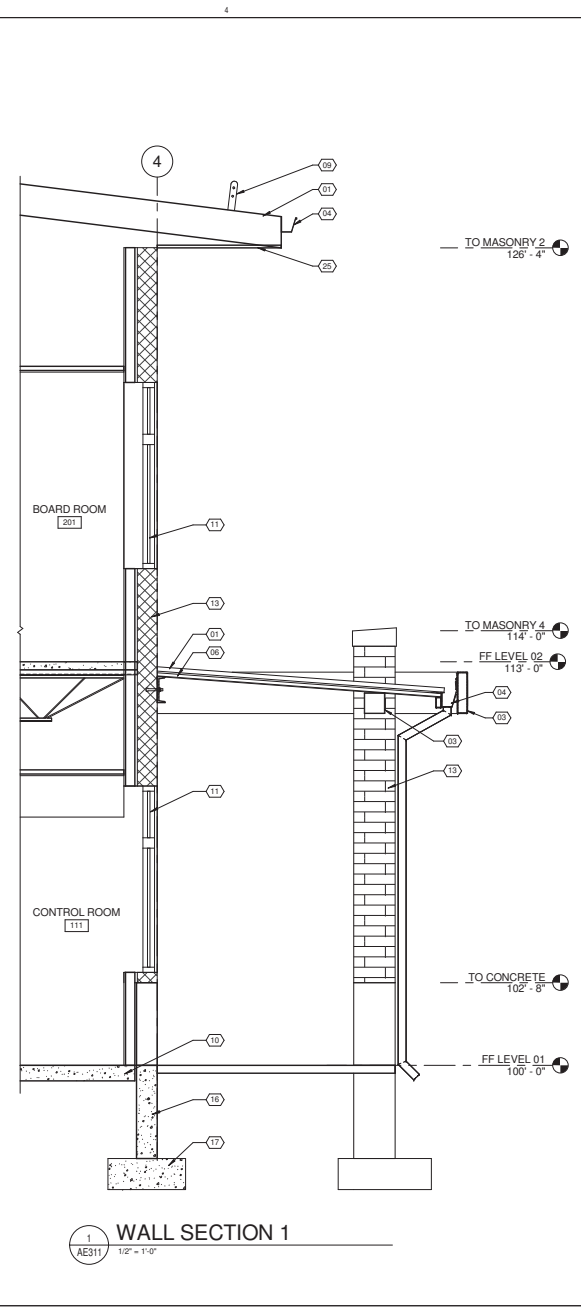
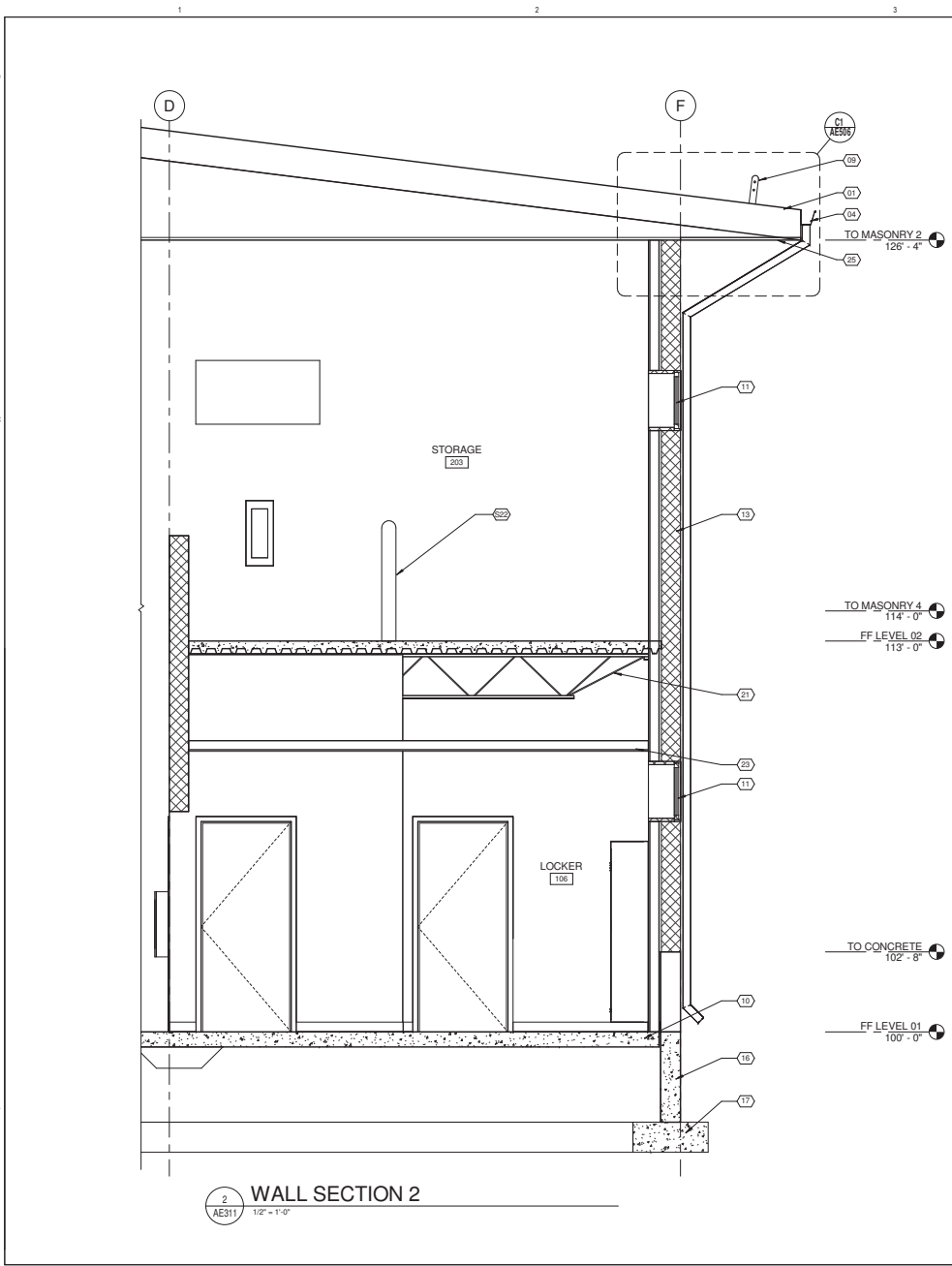
SUNRISE ENGINEERING

2036 LINCOLN AVE., SUITE 104
OGDEN, UTAH 84401
TEL 801-556-8109 • FAX 801-523-0990
www.sunrise-eng.com

OGDEN CITY
WATER TREATMENT PLANT RECONST.
BUILDING SECTIONS - DEWATER

REV. NO.	DESIGNED	DRAWN	CHECKED	SHEET NO.	SHEET TOTAL
04655	DT	PNMC	JN	72	244

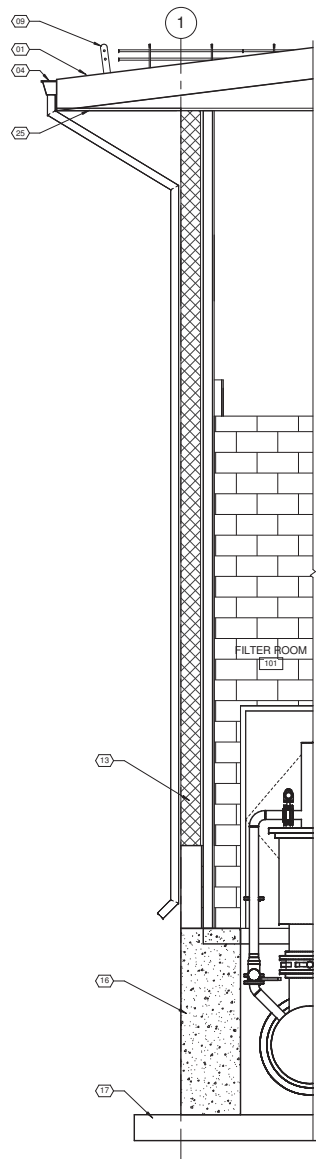
AE305



KEYNOTES	
01	STANDING SEAM METAL ROOF
03	STEEL BEAM, PAINTED - SEE STRUCTURAL
04	GUTTER AND DOWNSPOUT
06	STEEL ROOF DECK
09	SNOW GUARDS
10	CONCRETE SLAB
11	SCHEDULED WINDOW
13	ATLAS STRUCTURAL BRICK
16	REINFORCED CONCRETE FOUNDATION WALL
17	REINFORCED CONCRETE FOOTING
21	STEEL JOIST
23	SCHEDULED CEILING
25	METAL SOFFIT PANEL
S22	SURFACED MOUNTED BOLLARD, FIELD VERIFY MECHANICAL UNIT, SEE STRUCTURAL FOR DETAIL

CRSA		649 E SOUTH TEMPLE SLC, UT 84102 801.355.5915 www.crsa-us.com	
REV. NO.	COMMENTS	DATE	
2036 LINCOLN AVE., SUITE 104 OGDEN, UTAH 84401 TEL 801.556.8109 • FAX 801.523.0990 www.sunrise-eng.com			
OGDEN CITY			
WATER TREATMENT PLANT RECONST.			
WALL SECTIONS			
REV. NO.	DESIGNED	DRAWN	CHECKED
04655	DT	PN/MC	JN
SHEET NO.			73 of 244
PROJECT NO.			AE311

C:\shared\Documents_A\3033_01\WP_2011\part4
 1/17/2012 10:07:04 AM

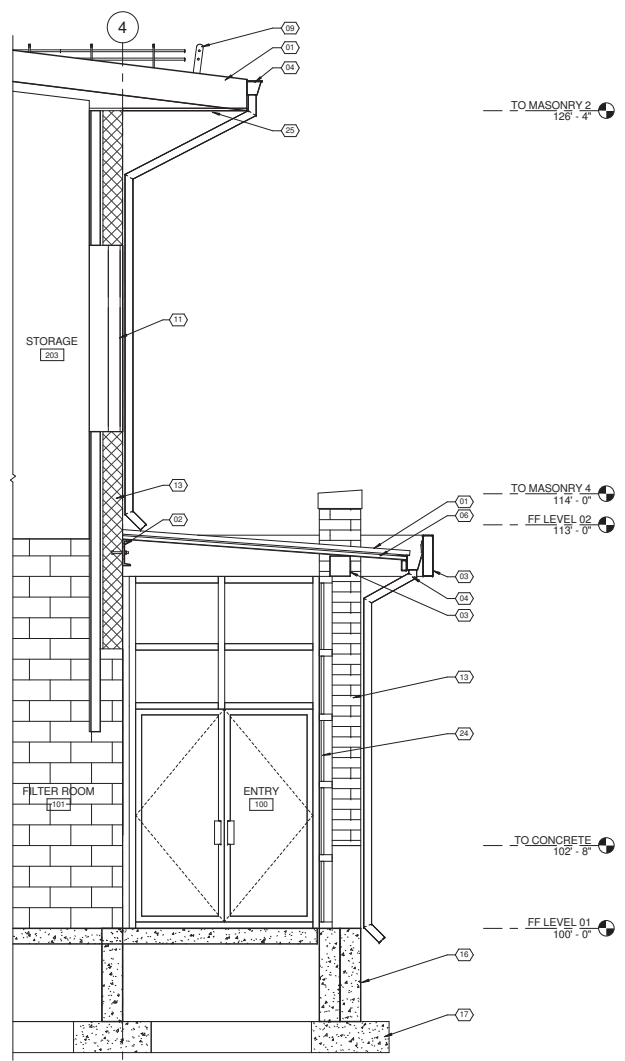


TO MASONRY 2
126'-4"

TO CONCRETE
102'-8"

FF LEVEL 01
100'-0"

1 AE312 - WALL SECTION 3
1/2" = 1'-0"



TO MASONRY 2
126'-4"

TO MASONRY 4
114'-0"

FF LEVEL 02
113'-0"

TO CONCRETE
102'-8"

FF LEVEL 01
100'-0"

2 AE312 - WALL SECTION 2
1/2" = 1'-0"

KEYNOTES	
01	STANDING SEAM METAL ROOF
02	CONTINUOUS LEDGER, SEE STRUCTURAL
03	STEEL BEAM, PAINTED - SEE STRUCTURAL
04	GUTTER AND DOWNSPOUT
06	STEEL ROOF DECK
09	SNOW GUARDS
11	SCHEDULED WINDOW
13	ATLAS STRUCTURAL BRICK
16	REINFORCED CONCRETE FOUNDATION WALL
17	REINFORCED CONCRETE FOOTING
24	SCHEDULED STOREFRONT SYSTEM
25	METAL SOFFIT PANEL

649 E SOUTH TEMPLE
SLC, UT 84102
801.355.5915
www.crsa-us.com

REV. NO.	COMMENTS	DATE

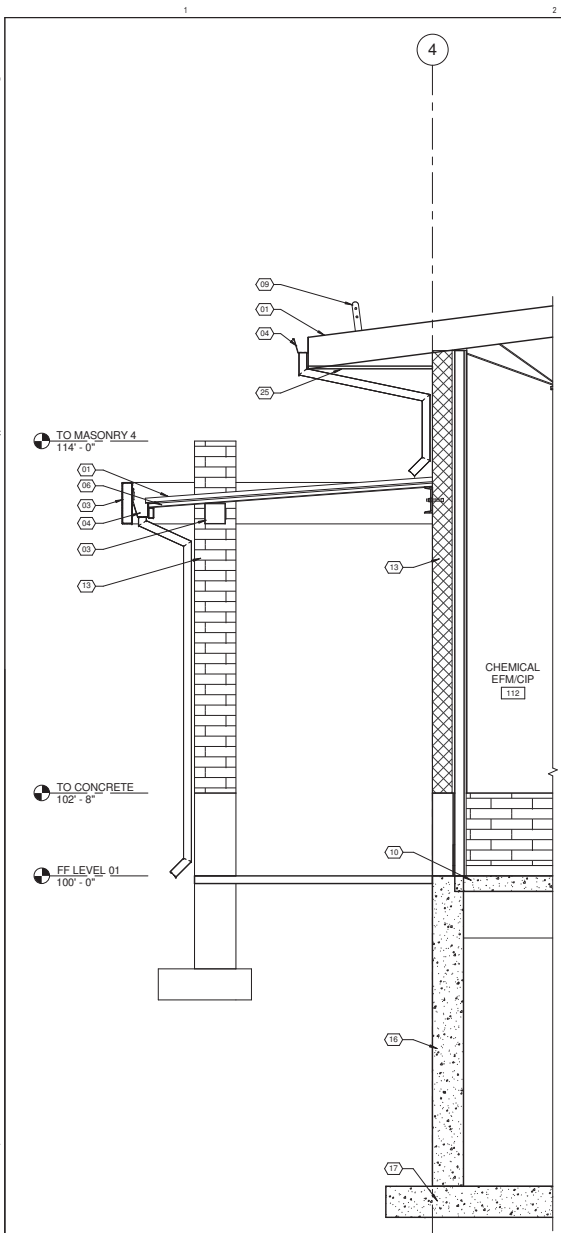
SUNRISE ENGINEERING
2036 LINCOLN AVE., SUITE 104
OGDEN, UTAH 84401
TEL 801.556.8109 • FAX 801.523.0990
www.sunrise-eng.com

OGDEN CITY
WATER TREATMENT PLANT RECONST.

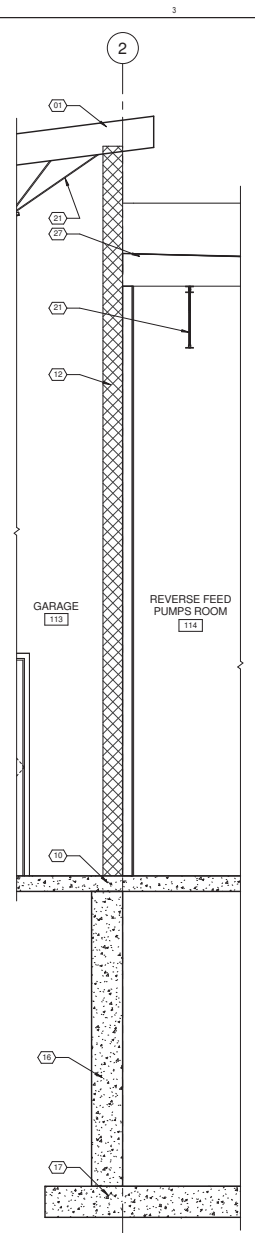
WALL SECTIONS

REV. NO.	DRAWN	CHECKED	DATE	SHEET NO.	TOTAL SHEETS
04655	DT	PN/MC	JN	74	244

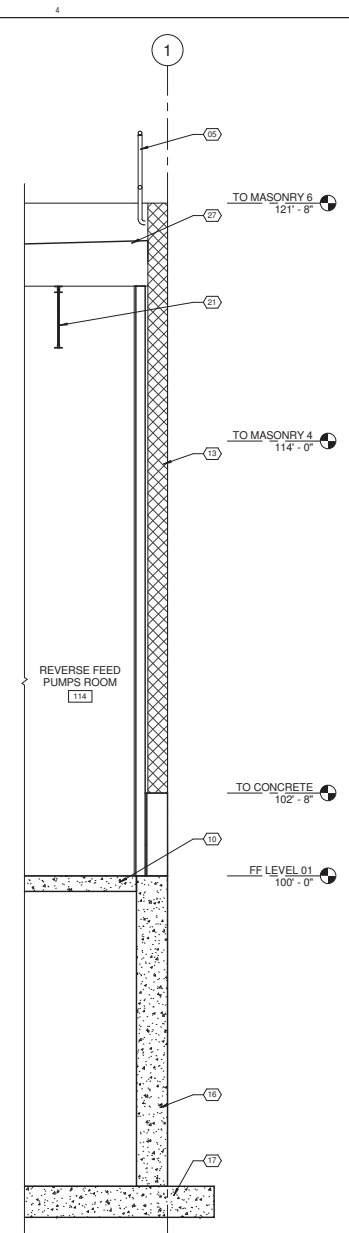
AE312



1
AE313
WALL SECTION 3
1/2" = 1'-0"



2
AE313
WALL SECTION 2
1/2" = 1'-0"



3
AE313
WALL SECTION 1
1/2" = 1'-0"

KEYNOTES	
01	STANDING SEAM METAL ROOF
03	STEEL BEAM, PAINTED - SEE STRUCTURAL
04	GUTTER AND DOWNSPOUT
05	GUARDRAIL
06	STEEL ROOF DECK
09	SNOW GUARDS
10	CONCRETE SLAB
12	SCHEDULED MASONRY
13	ATLAS STRUCTURAL BRICK
16	REINFORCED CONCRETE FOUNDATION WALL
17	REINFORCED CONCRETE FOOTING
21	STEEL JOIST
25	METAL SOFFIT PANEL
27	SINGLE-PLY ROOFING SYSTEM

CRSA 649 E SOUTH TEMPLE
SLC, UT 84102
801.355.5915
www.crsa-us.com

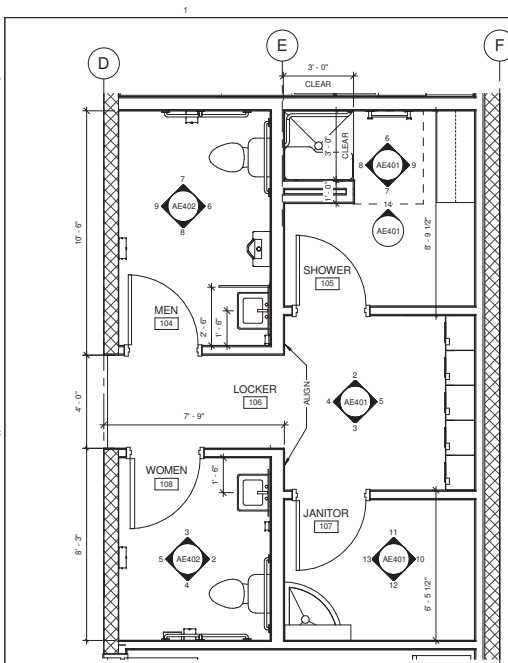
REV. NO.	COMMENTS	DATE

SUNRISE ENGINEERING
2036 LINCOLN AVE., SUITE 104
OGDEN, UTAH 84401
TEL 801-556-8109 • FAX 801-523-0990
www.sunrise-eng.com

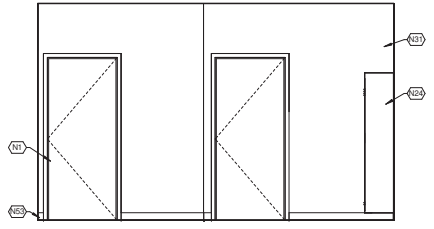
OGDEN CITY
WATER TREATMENT PLANT RECONST.

WALL SECTIONS					
REV. NO.	DESIGNED	DRAWN	CHECKED	SHEET NO.	TITLE
04655	DT	PNMC	JN	75 of 244	AE313

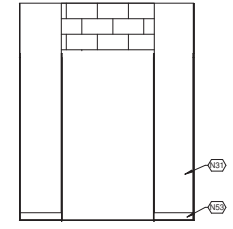
C:\shared\Documents_A\3033_01\WP_201_Lp\114
 11/18/14 10:01:17 AM



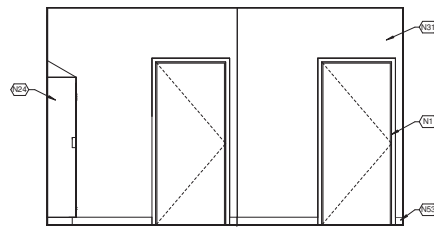
1 105/106/107 ENLARGED - LOCKER/REST
AE401 3/8" - 1'-0"



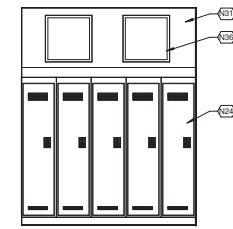
2 106 LOCKER - NORTH
AE401 3/8" - 1'-0"



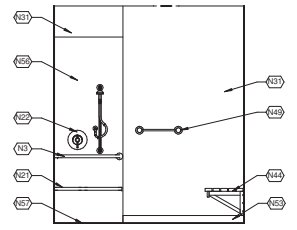
4 106 LOCKER - WEST
AE401 3/8" - 1'-0"



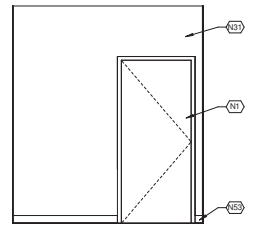
3 106 LOCKER - SOUTH
AE401 3/8" - 1'-0"



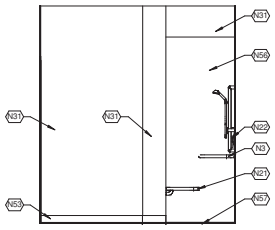
5 106 LOCKER - EAST
AE401 3/8" - 1'-0"



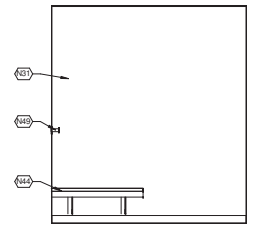
6 105 SHOWER - NORTH
AE401 3/8" - 1'-0"



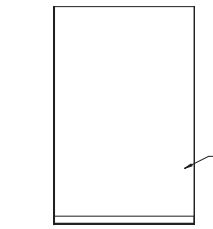
7 105 SHOWER - SOUTH
AE401 3/8" - 1'-0"



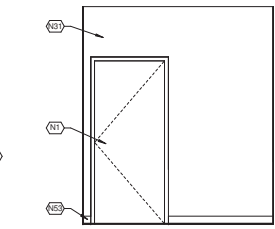
8 105 SHOWER - WEST
AE401 3/8" - 1'-0"



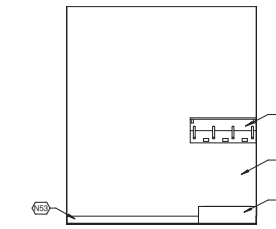
9 105 SHOWER - EAST
AE401 3/8" - 1'-0"



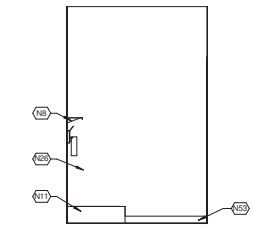
10 107 JAN - EAST
AE401 3/8" - 1'-0"



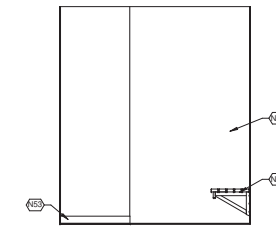
11 107 JAN - NORTH
AE401 3/8" - 1'-0"



12 107 JAN - SOUTH
AE401 3/8" - 1'-0"



13 107 JAN - WEST
AE401 3/8" - 1'-0"



14 105 SHOWER - NORTH 2
AE401 3/8" - 1'-0"

KEYNOTES	
N1	SCHEDULED DOOR AND FRAME
N3	GRAB BAR
N8	JANITOR SUPPLY SHELF AND MOP HOLDER
N11	JANITOR'S MOP SINK
N19	LIGHT FIXTURE
N21	ACCESSIBLE FOLDING SHOWER BENCH
N22	SHOWER CONTROLS, SEE PLUMBING DRAWINGS
N24	METAL LOCKERS, SEE SPECIFICATION
N26	FRP PANELS
N31	PAINT GYP. BD.
N36	SCHEDULED WINDOW AND FRAME
N44	ACCESSIBLE WALL MOUNTED BENCH
N49	TOWEL BAR
N53	SCHEDULED BASE
N56	3 WALL SHOWER SURROUND KIT, 96" HEIGHT
N57	SHOWER BASE, ADA SERIES, SEE MECHANICAL

NOTE:
SHOWER BASE IS "ADA" SERIES. CONSTRUCTION IS ONE PIECE, TERRAZZO COMPOSED OF MARBLE CHIPS CAST IN PORTLAND CEMENT TO PROVIDE A COMPRESSIVE STRENGTH OF AT LEAST 3,000 PSI SEVEN DAYS AFTER CASTING.

THE SHOWER BASE SURFACE IS GROUND SMOOTH AND SEALED.

THE SIDES AND REAR OF THE FIXTURE COME WITH GALVANIZED TILING FLANGES EXTENDING 1 1/2" ABOVE 1 1/2" WIDE SHOULDER.

THE DRAIN IS SUPPLIED WITH A REMOVABLE, STAINLESS STEEL GRID STRAINER AND PROVIDES FOR AN INSIDE CAULK CONNECTION TO A 2" PIPE.

649 E SOUTH TEMPLE
CRSA SLC, UT 84102
 801.355.5915
 www.crsa-us.com

REV. NO.	COMMENTS	DATE

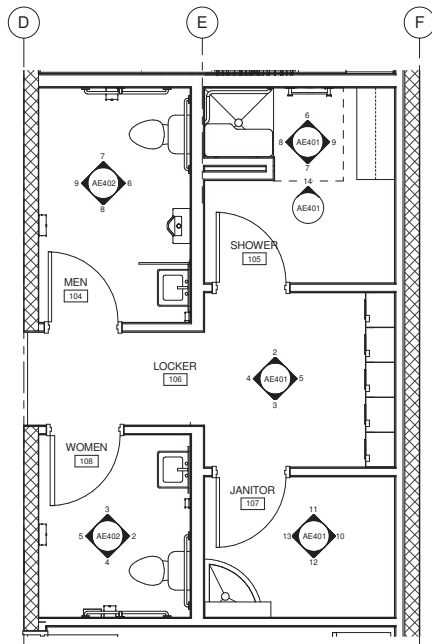
SUNRISE ENGINEERING
 2036 LINCOLN AVE., SUITE 104
 OGDEN, UTAH 84401
 TEL 801.556.8109 - FAX 801.523.0990
 www.sunrise-eng.com

OGDEN CITY
 WATER TREATMENT PLANT RECONSTR.
 INTERIOR ELEVATIONS

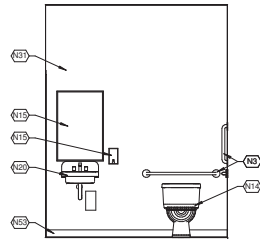
REV. NO.	ISSUED	BY	CHECKED	DATE	NO.
04655	DT	PN/MC	JN	7/6	244

AE401

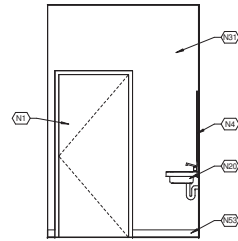
C:\shared\Documents_A\3033_OVP_2011.dwg
 7/17/11 12:50:07 PM



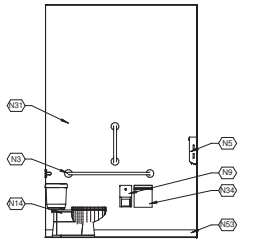
1 104/108 ENLARGED - RESTROOMS
AE402 3/8" = 1'-0"



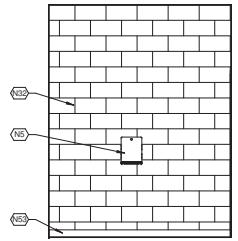
2 108 WOMEN - EAST
AE402 3/8" = 1'-0"



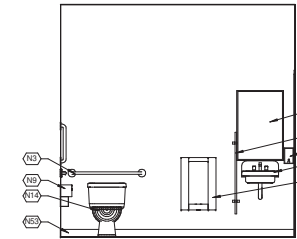
3 108 WOMEN - NORTH
AE402 3/8" = 1'-0"



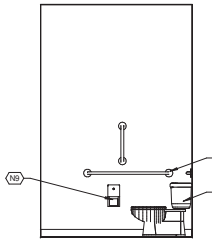
4 108 WOMEN - SOUTH
AE402 3/8" = 1'-0"



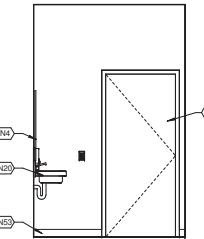
5 108 WOMEN - WEST
AE402 3/8" = 1'-0"



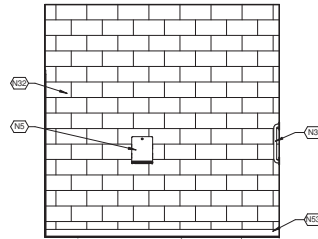
6 104 MEN - EAST
AE402 3/8" = 1'-0"



7 104 MEN - NORTH
AE402 3/8" = 1'-0"



8 104 MEN - SOUTH
AE402 3/8" = 1'-0"



9 104 MEN - WEST
AE402 3/8" = 1'-0"

KEYNOTES

- N1 SCHEDULED DOOR AND FRAME
- N3 GRAB BAR
- N4 MIRROR
- N5 PAPER TOWEL DISPENSER
- N7 WALL MOUNTED URINAL PARTITION
- N9 TOILET PAPER DISPENSER
- N13 URINAL
- N14 WATER CLOSET
- N15 SOAP DISPENSER
- N20 WALL MOUNTED SINK
- N31 PAINT GYP. BD.
- N32 PAINT CMU
- N34 SANITARY NAPKIN DISPOSAL
- N53 SCHEDULED BASE

CRSA 649 E SOUTH TEMPLE
SLC, UT 84102
801.355.5915
www.crsa-us.com

REV. NO.	COMMENTS	DATE

SUNRISE ENGINEERING
2036 LINCOLN AVE., SUITE 104
OGDEN, UTAH 84401
TEL 801.656.8109 • FAX 801.523.0990
www.sunrise-eng.com

OGDEN CITY

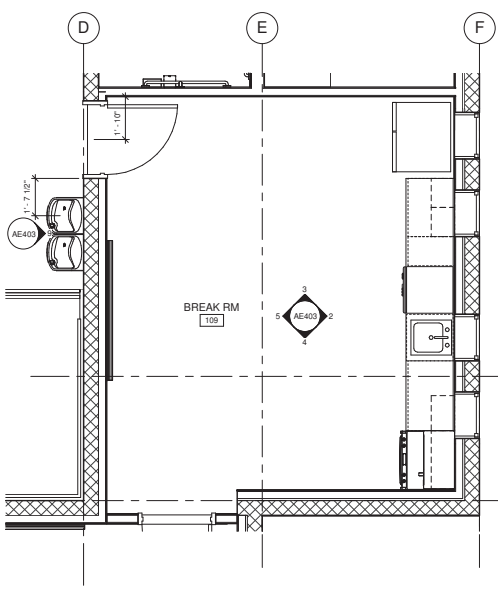
WATER TREATMENT PLANT RECONST.

INTERIOR ELEVATIONS

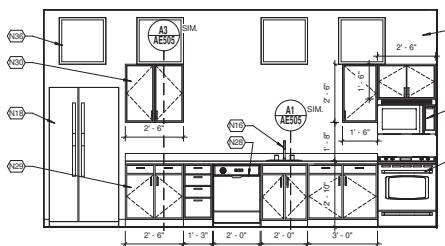
REV. NO.	DESIGNED	PERM.	CHECKED	SHEET NO.	TOTAL SHEETS
04655	DT	PN/MC	JN	77	244

AE402

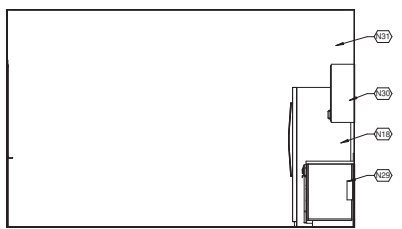
KEYNOTES	
N1	SCHEDULED DOOR AND FRAME
N16	STAINLESS STEEL DROP IN SINK, SEE PLUMBING DRAWINGS
N18	FREEZER, O.F.C.I.
N28	DISHWASHER, O.F.C.I.
N29	BASE CABINETS
N30	UPPER CABINETS
N31	PAINT GYP. BD.
N36	SCHEDULED WINDOW AND FRAME
N37	CABINET MOUNTED MICROWAVE
N39	UNDER COUNTER REFRIGERATOR, O.F.C.I.
N41	STOVE, O.F.C.I.
N42	MARKER BOARD, O.F.C.I.



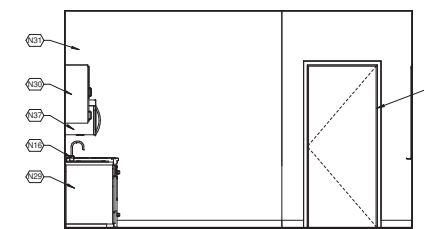
1
AE403
3/8" = 1'-0"
109 ENLARGED - BREAK RM



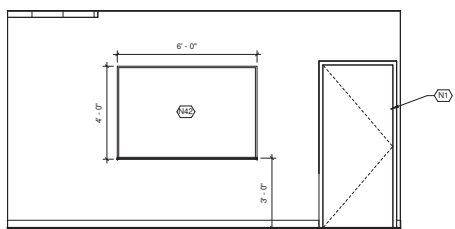
2
AE403
3/8" = 1'-0"
109 BREAK RM - EAST



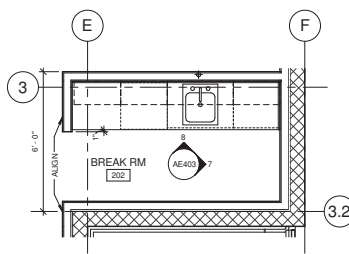
3
AE403
3/8" = 1'-0"
109 BREAK RM - NORTH



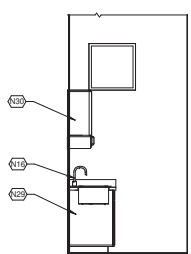
4
AE403
3/8" = 1'-0"
109 BREAK RM - SOUTH



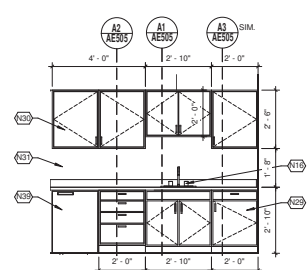
5
AE403
3/8" = 1'-0"
109 BREAK RM - WEST



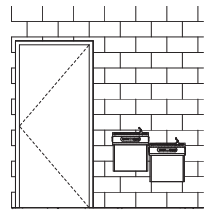
6
AE403
3/8" = 1'-0"
202 ENLARGED - BREAK RM



7
AE403
3/8" = 1'-0"
202 BREAK RM - EAST



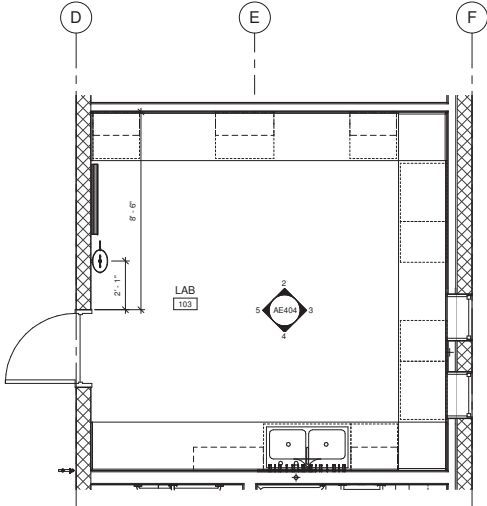
8
AE403
3/8" = 1'-0"
202 BREAK RM - NORTH



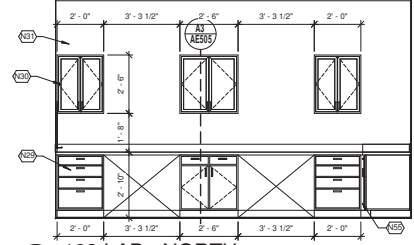
9
AE403
3/8" = 1'-0"
101 DRINK FOUNTAIN - EAST

C:\shared\Documents_A\3033_01\PT_201_1.ppt
 1/12/21 10:22 AM

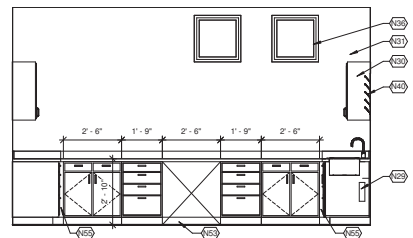
		649 E SOUTH TEMPLE	
		SLC, UT 84102	
		801.355.5915	
		www.crsa-us.com	
REV. NO.	COMMENTS	DATE	
		2036 LINCOLN AVE., SUITE 104 OGDEN, UTAH 84401 TEL 801-556-8109 - FAX 801-523-0990 www.sunrise-eng.com	
OGDEN CITY WATER TREATMENT PLANT RECONST. INTERIOR ELEVATIONS			
DR. NO.	DESIGNED	PAINT	CHECKED
04655	DT	PNMC	JN
78	244	AE403	



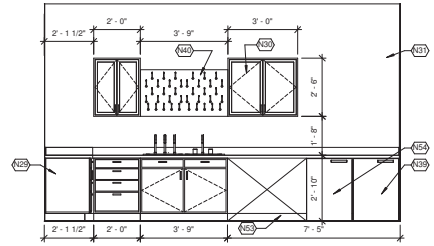
1 103 ENLARGED - LAB RM
3/8" = 1'-0"



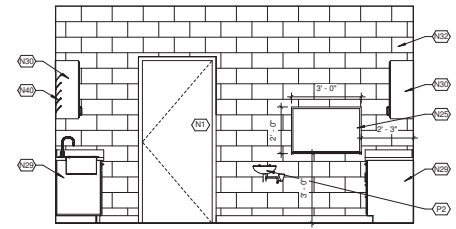
2 103 LAB - NORTH
3/8" = 1'-0"



3 103 LAB - EAST
3/8" = 1'-0"



4 103 LAB - SOUTH
3/8" = 1'-0"



5 103 LAB - WEST
3/8" = 1'-0"

KEYNOTES	
N1	SCHEDULED DOOR AND FRAME
N25	MARKER BOARD, O.F.C.I.
N29	BASE CABINETS
N30	UPPER CABINETS
N31	PAINT GYP. BD.
N32	PAINT CMU
N36	SCHEDULED WINDOW AND FRAME
N39	UNDER COUNTER REFRIGERATOR, O.F.C.I.
N40	GLASSWARE DRYING PEG BOARD, O.F.C.I.
N53	SCHEDULED BASE
N54	UNDER COUNTER FREEZER, O.F.C.I.
N55	FILL CORNERS WITH FILLER
P2	EMERGENCY EYE WASH

CRSA 649 E SOUTH TEMPLE
SLC, UT 84102
801.355.5915
www.crsa-us.com

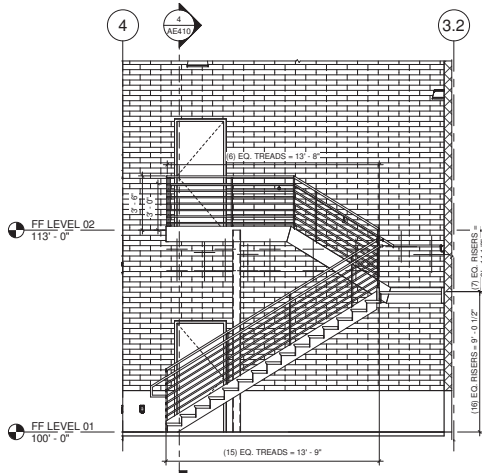
REV. NO.	COMMENTS	DATE

SUNRISE ENGINEERING
2036 LINCOLN AVE., SUITE 104
OGDEN, UTAH 84401
TEL 801-556-8109 • FAX 801-523-0990
www.sunrise-eng.com

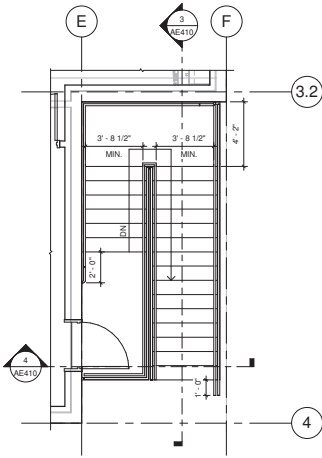
OGDEN CITY
WATER TREATMENT PLANT RECONST.
INTERIOR ELEVATIONS

BY	DESIGNED	DRAWN	CHECKED	SHEET NO.	TOTAL SHEETS
04655	DT	PN/MC	JN	79	244

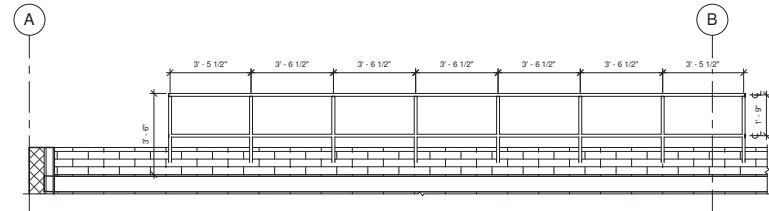
AE404



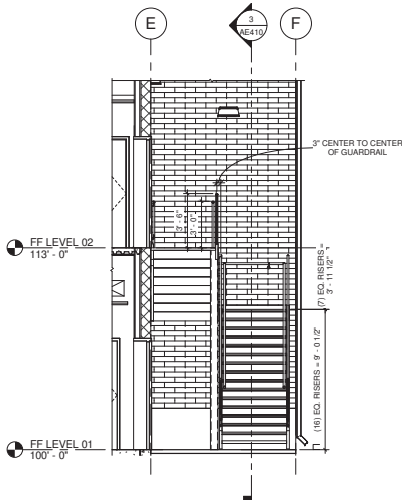
3
AE410
EXTERIOR STAIRS - SECTION 1
1/4" = 1'-0"



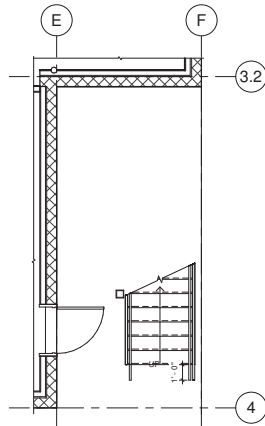
2
AE410
LEVEL 02 - STAIR EXTERIOR
1/4" = 1'-0"



5
AE410
ROOF SAFETY RAIL - NORTH
3/8" = 1'-0"

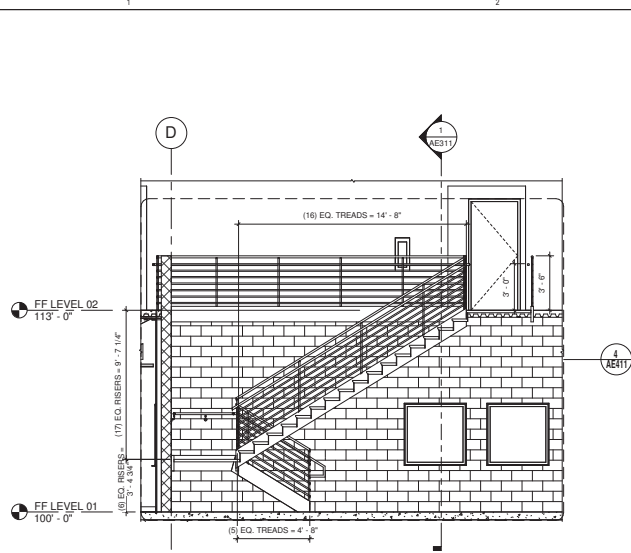


4
AE410
EXTERIOR STAIRS - SECTION 2
1/4" = 1'-0"

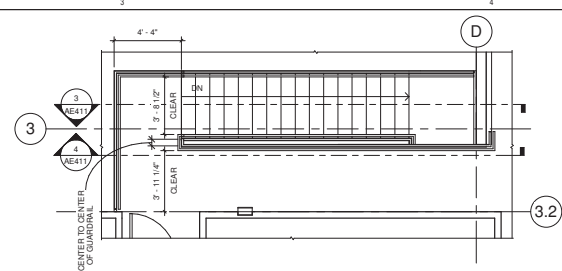


1
AE410
LEVEL 01 - STAIR EXTERIOR
1/4" = 1'-0"

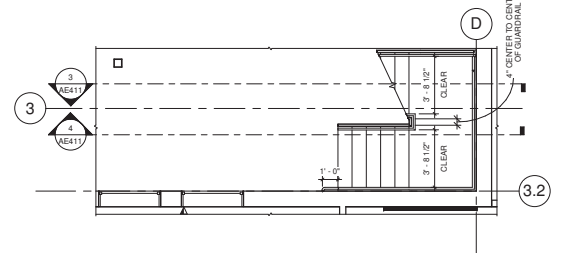
CRSA		649 E SOUTH TEMPLE SLC, UT 84102 801.355.5915 www.crsa-us.com	
REV. NO.	COMMENTS	DATE	
2036 LINCOLN AVE., SUITE 104 OGDEN, UTAH 84401 TEL 801-556-8109 • FAX 801-523-0990 www.sunrise-eng.com		OGDEN CITY WATER TREATMENT PLANT RECONST. STAIR PLANS & SECTIONS - EXTERIOR	
BY NO.	DESIGNED	IN CHARGE	CHECKED
04655	DT	PN/MC	JN
SHEET NO.			AE410
80			244



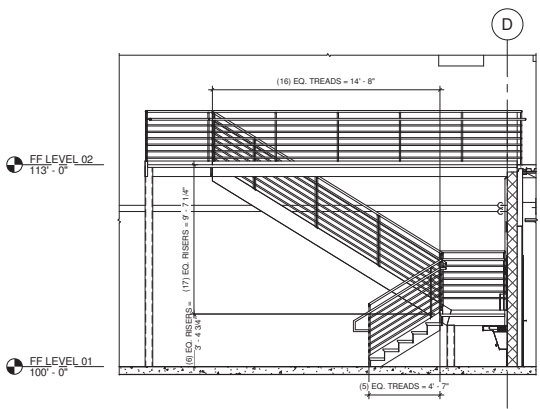
3 INTERIOR STAIRS - SECTION 1
1/4" = 1'-0"



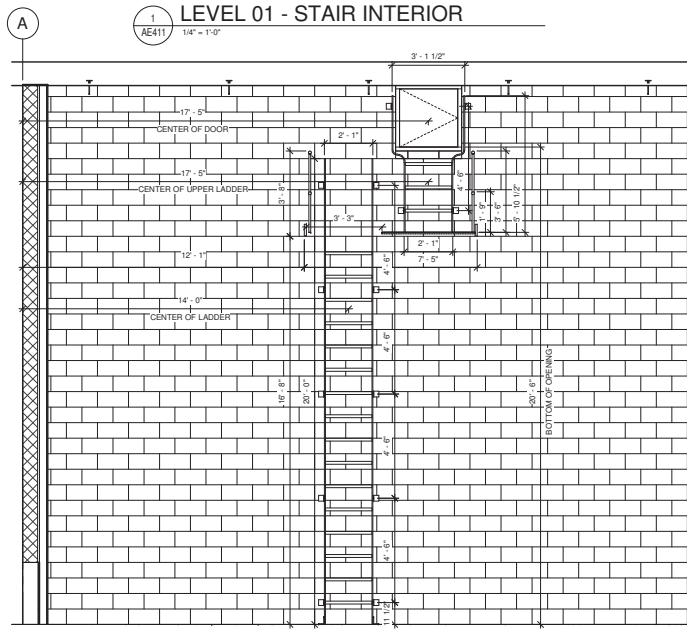
2 LEVEL 02 - STAIR INTERIOR
1/4" = 1'-0"



1 LEVEL 01 - STAIR INTERIOR
1/4" = 1'-0"



4 INTERIOR STAIRS - SECTION 3
1/4" = 1'-0"



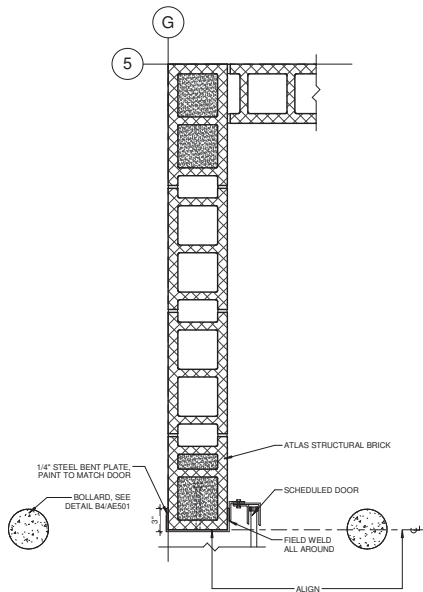
5 113 GARAGE RM LADDER - NORTH
3/8" = 1'-0"

C:\shared\Documents_A_1033_01\1033_01\1033_01.dwg
 1/18/14 10:28:24 AM

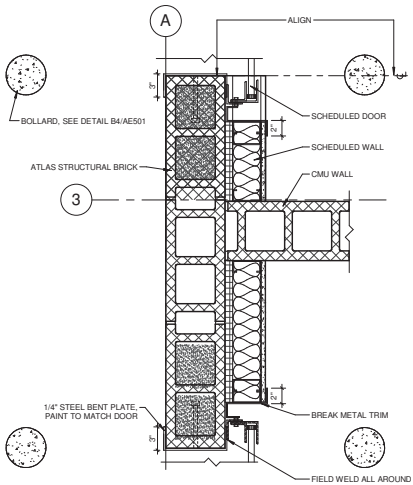
		649 E SOUTH TEMPLE SLC, UT 84102 801.355.5915 www.crsa-us.com	
REV. NO.	COMMENTS	DATE	
2036 LINCOLN AVE., SUITE 104 OGDEN, UTAH 84401 TEL 801-556-8109 • FAX 801-523-0990 www.sunrise-eng.com			
OGDEN CITY			
WATER TREATMENT PLANT RECONST.			
STAIR PLANS & SECTIONS - INTERIOR			
BY	DESIGNED	CHECKED	DATE
04655	DT	PNMC	JN
SHEET NO. 81 of 244			AE411

1 2 3 4 5

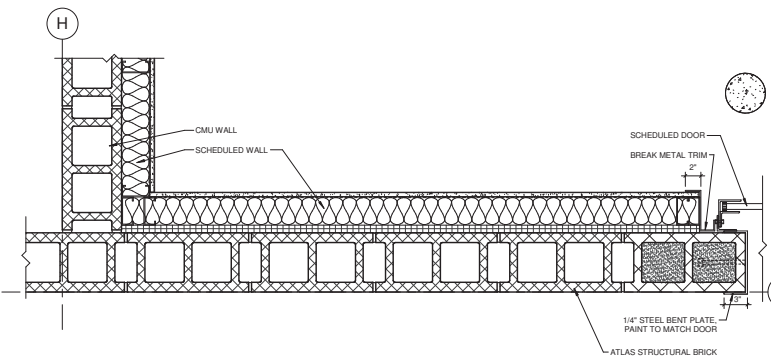
C:\shared\Documents_A_0303_01\WP_201_1.dwg
 1/17/21 10:50:14 AM



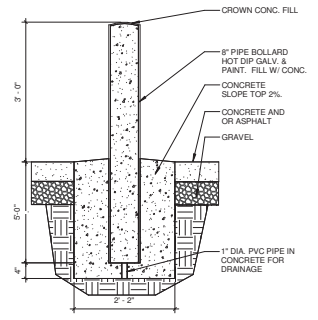
A1
AE501
1 1/2" = 1'-0"



A2
AE501
1 1/2" = 1'-0"

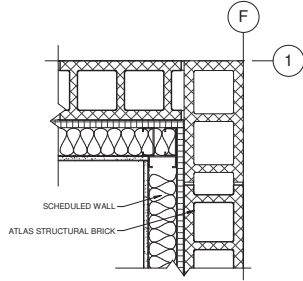


A3
AE501
1 1/2" = 1'-0"

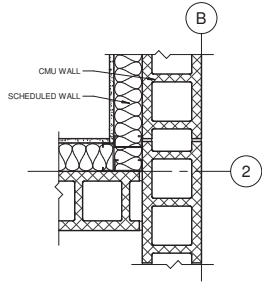


B4
AE501
3/4" = 1'-0"

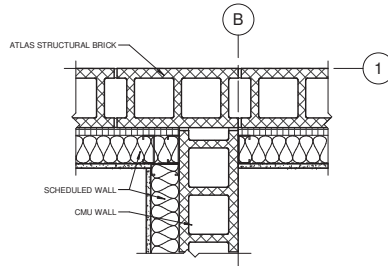
		649 E SOUTH TEMPLE	
		SLC, UT 84102	
		801.355.5915	
		www.crsq-us.com	
REV. NO.	COMMENTS	DATE	
2036 LINCOLN AVE., SUITE 104 OGDEN, UTAH 84401 TEL 801.556.8109 • FAX 801.523.0990 www.sunrise-eng.com			
OGDEN CITY WATER TREATMENT PLANT RECONST. DETAILS			
BY NO.	DESIGNED	CHECKED	DATE
04655	DT	PN/MC	JN
			82 of 244
			AE501



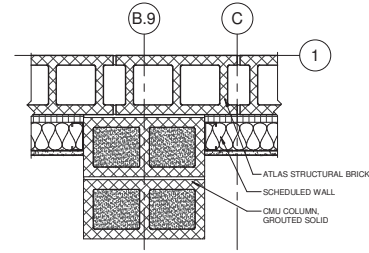
C1 DETAIL
AE502 1 1/2" = 1'-0"



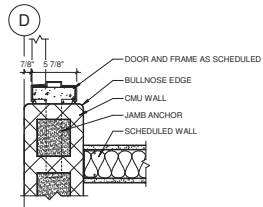
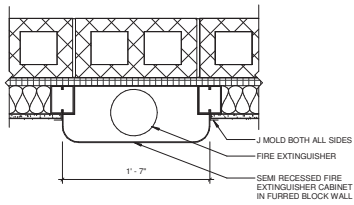
C2 DETAIL
AE502 1 1/2" = 1'-0"



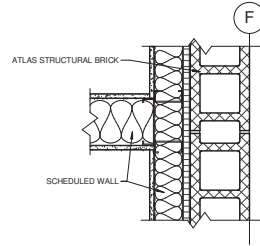
C3 DETAIL
AE502 1 1/2" = 1'-0"



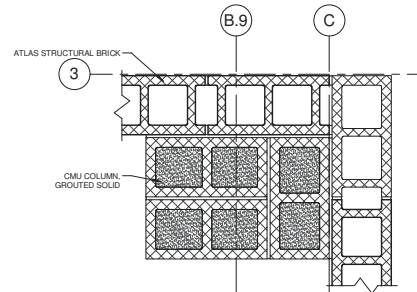
C4 DETAIL
AE502 1 1/2" = 1'-0"



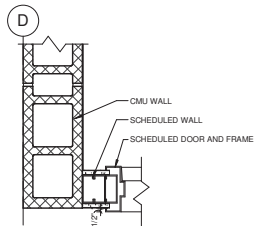
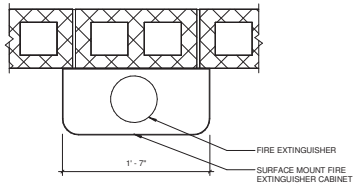
B2 DETAIL
AE502 1 1/2" = 1'-0"



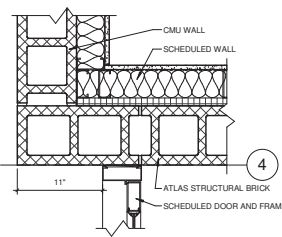
B3 DETAIL
AE502 1 1/2" = 1'-0"



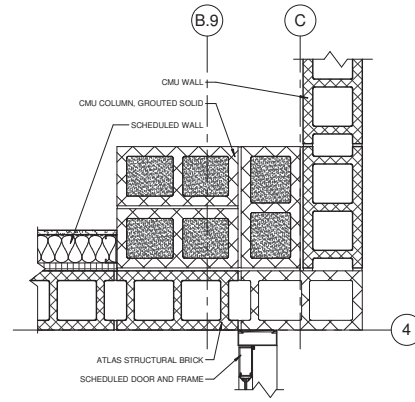
B4 DETAIL
AE502 1 1/2" = 1'-0"



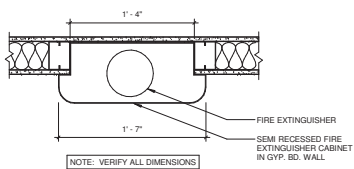
A2 DETAIL
AE502 1 1/2" = 1'-0"



A3 DETAIL
AE502 1 1/2" = 1'-0"

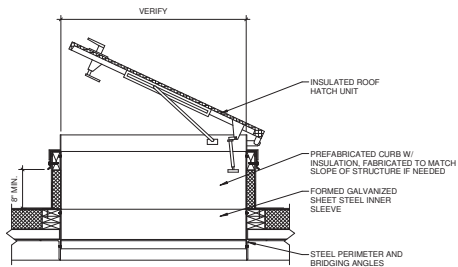


A4 DETAIL
AE502 1 1/2" = 1'-0"

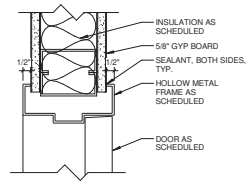


A1 FIRE EXTINGUISHER CABINET
AE502 1 1/2" = 1'-0"

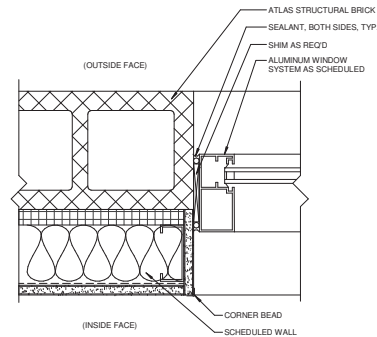
CRSA		649 E SOUTH TEMPLE SLC, UT 84102 801.355.5915 www.crsa-us.com	
REV. NO.	COMMENTS	DATE	
		2036 LINCOLN AVE., SUITE 104 OGDEN, UTAH 84401 TEL 801.556.8109 • FAX 801.523.0990 www.sunrise-eng.com	
OGDEN CITY			
WATER TREATMENT PLANT RECONST.			
DETAILS			
REV. NO.	DESIGNED	DRAWN	CHECKED
04655	DT	PN/MC	JN
11/22/14			
83	of 244	AE502	



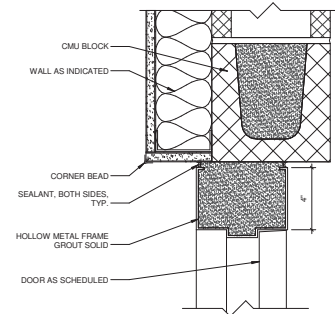
C1 ROOF HATCH DETAIL
1' - 1'-0"



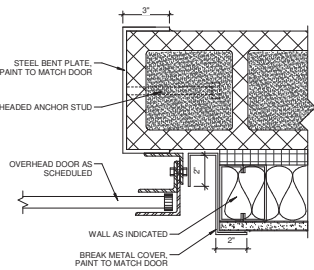
C2 DOOR HEAD / JAMB DETAIL
3' - 1'-0"



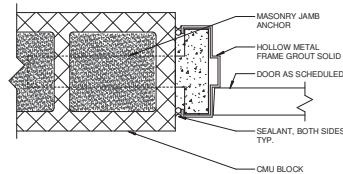
C3 WINDOW JAMB DETAIL (HEAD SIM.)
3' - 1'-0"



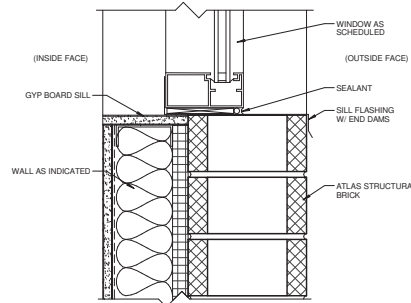
C4 DOOR HEAD @ CMU (JAMB SIM.)
3' - 1'-0"



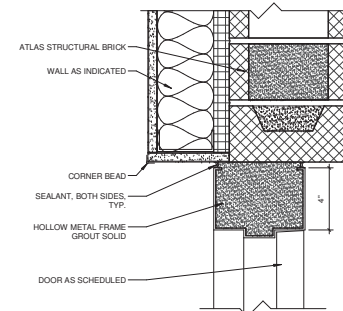
B1 COILING DOOR JAMB
3' - 1'-0"



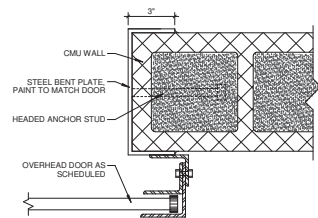
B2 DOOR JAMB @ CMU (HEAD SIM.)
3' - 1'-0"



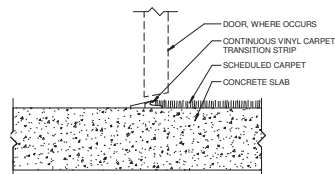
B3 WINDOW SILL DETAIL
3' - 1'-0"



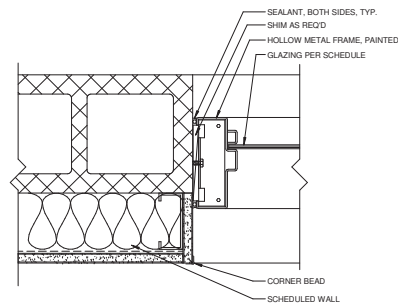
B4 DOOR HEAD @ ATLAS BRICK (JAMB SIM.)
3' - 1'-0"



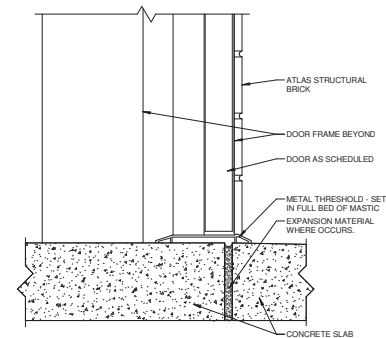
A1 COILING DOOR JAMB
3' - 1'-0"



A2 FLOOR TRANSITION DETAIL
3' - 1'-0"



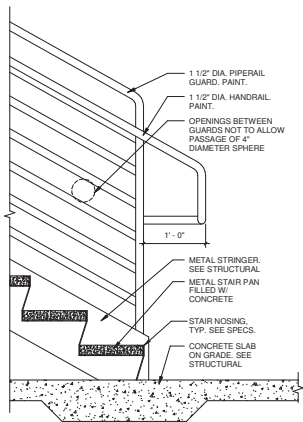
A3 WINDOW JAMB (HEAD SIM.)
3' - 1'-0"



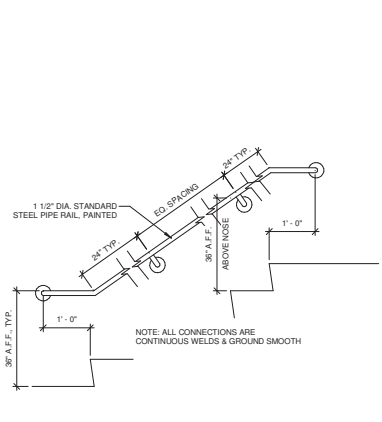
A4 THRESHOLD DETAIL
3' - 1'-0"

C:\shared\Documents_A_10033_01\PT_201_1.dwg
 1/17/2014 10:24:14 AM

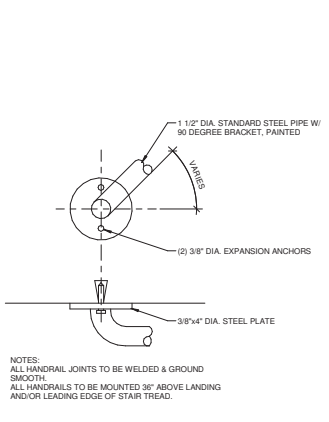
		649 E SOUTH TEMPLE SLC, UT 84102 801.355.5915 www.crsq-us.com	
		REV. NO.	COMMENTS
2036 LINCOLN AVE., SUITE 104 OGDEN, UTAH 84401 TEL 801-556-8109 - FAX 801-523-0990 www.sunrise-eng.com			
OGDEN CITY			
WATER TREATMENT PLANT RECONST.			
DETAILS			
SHEET NO. 04655	REVISION DT	DRAWN PNMC	CHECKED JN
DATE 84	OF 244	SHEET NO. AE503	



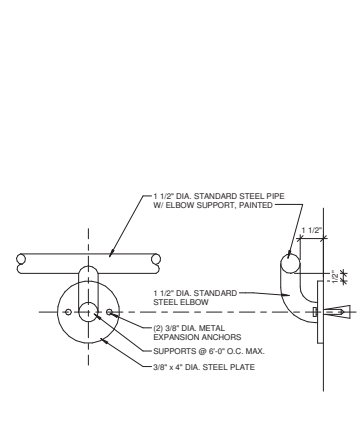
C1
AE504
1" = 1'-0"



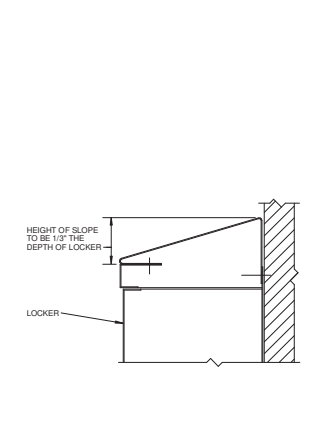
C2
AE504
3/4" = 1'-0"



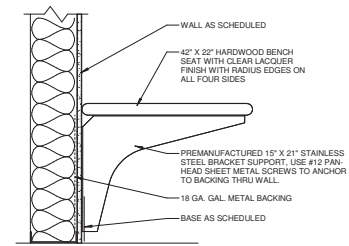
C3
AE504
3" = 1'-0"



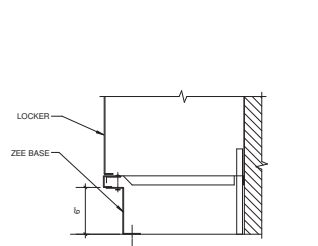
C4
AE504
3" = 1'-0"



C5
AE504
1 1/2" = 1'-0"



B4
AE504
1 1/2" = 1'-0"



B5
AE504
1 1/2" = 1'-0"

649 E SOUTH TEMPLE
 SL.C, UT 84102
 801.355.5915
 www.crsq-us.com

REV. NO.	COMMENTS	DATE

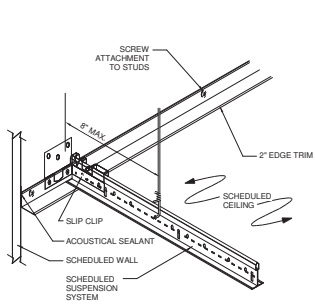
SUNRISE ENGINEERING
 2036 LINCOLN AVE., SUITE 104
 OGDEN, UTAH 84401
 TEL 801-556-8109 • FAX 801-523-0990
 www.sunrise-eng.com

OGDEN CITY
 WATER TREATMENT PLANT RECONST.

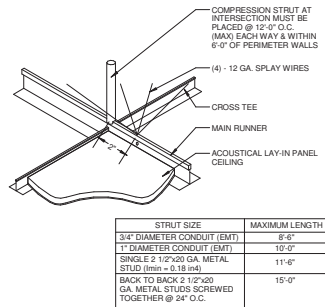
DETAILS

DR. NO.	DESIGNED	DRAWN	CHECKED	SHEET NO.
04655	DT	PN/MC	JN	85 of 244

AE504

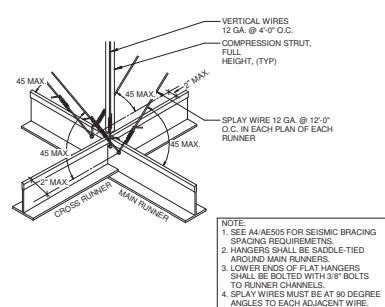


C1 RESTRAINED EDGE DETAIL
AE505 3\"/>



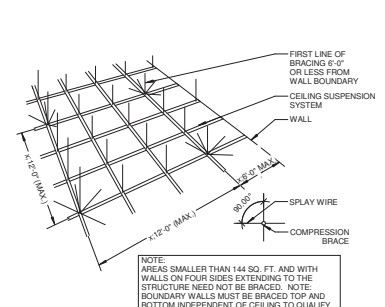
C2 COMPRESSION STRUT DETAIL
AE505 3\"/>

STRUT SIZE	MAXIMUM LENGTH
3/4\"/>	8'-0"
1\"/>	10'-0"
SINGLE 2 1/2\"/>	11'-6"
BACK TO BACK 2 1/2\"/>	15'-0"



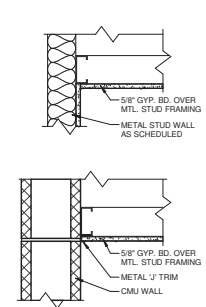
C3 SUSPENDED CEILING GRID DETAIL
AE505 1\"/>

NOTE:
1. SEE A4/AE505 FOR SEISMIC BRACING SPACING REQUIREMENTS.
2. HANGERS SHALL BE SADDLE-TIED AROUND MAIN RUNNERS.
3. LOWER ENDS OF FLAT HANGERS SHALL BE BOLTED WITH 3/8\"/>

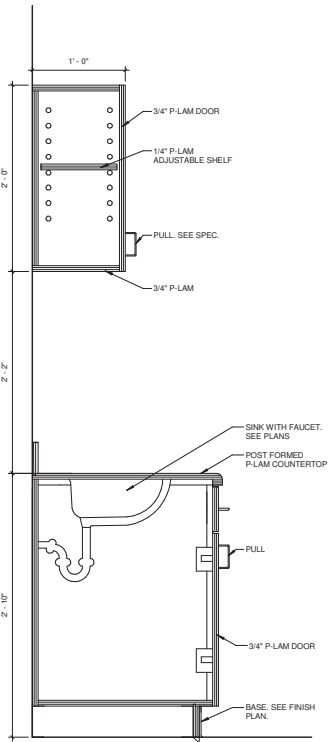


C4 SEISMIC BRACING DETAIL
AE505 1\"/>

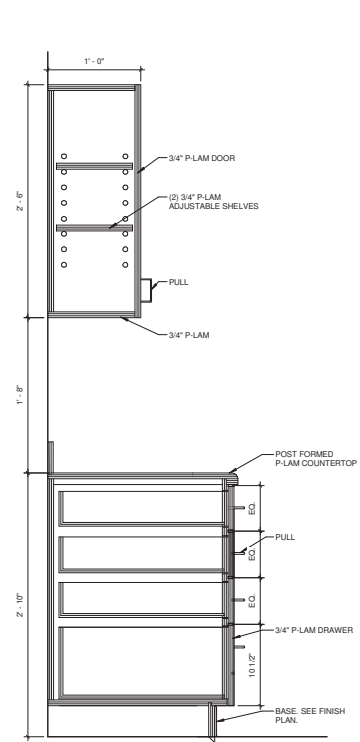
NOTE:
AREAS SMALLER THAN 144 SQ. FT. AND WITH WALLS ON FOUR SIDES EXTENDING TO THE STRUCTURE NEED NOT BE BRACED. NOTE: BOUNDARY WALLS MUST BE BRACED TOP AND BOTTOM INDEPENDENT OF CEILING TO QUALIFY.



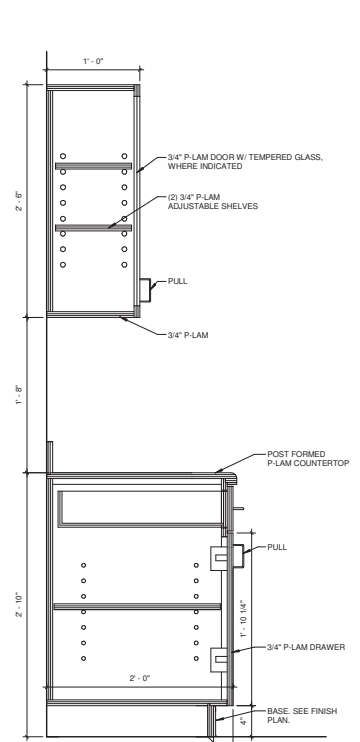
C5 GYP. BD. CEILING DETAIL
AE505 1 1/2\"/>



A1 MILLWORK SECTION @ BREAK ROOM
AE505 1 1/2\"/>

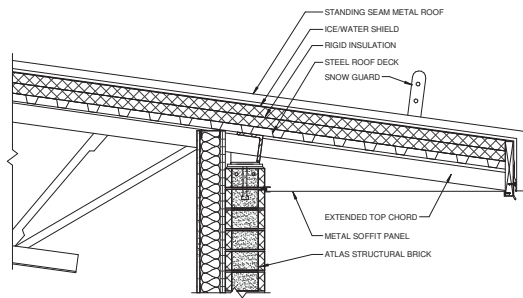


A2 MILLWORK SECTION @ BREAK ROOM
AE505 1 1/2\"/>

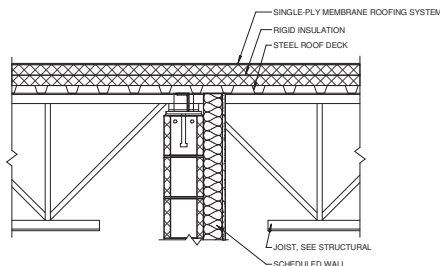


A3 MILLWORK SECTION @ LAB
AE505 1 1/2\"/>

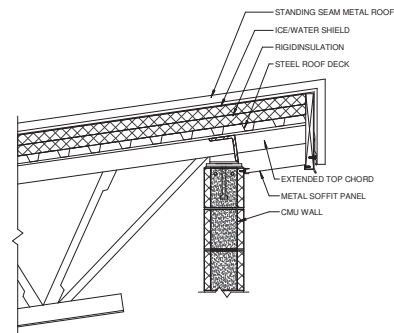
		649 E SOUTH TEMPLE	
		SLC, UT 84102	
		801.355.5915	
		www.crsq-us.com	
REV. NO.	COMMENTS	DATE	
		2036 LINCOLN AVE., SUITE 104 OGDEN, UTAH 84401 TEL 801-556-8109 - FAX 801-523-0990 www.sunrise-eng.com	
OGDEN CITY			
WATER TREATMENT PLANT RECONST.			
DETAILS			
REV. NO.	DESIGNED	DRAWN	CHECKED
04655	DT	PN/MC	JN
			86
			244
			AE505



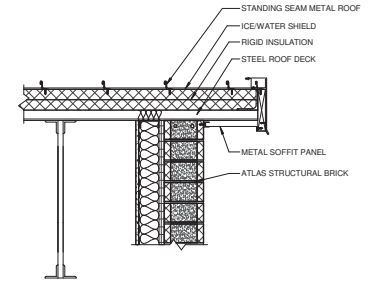
C1
AE506
STEEL JOIST @ CMU WALL
1" = 1'-0"



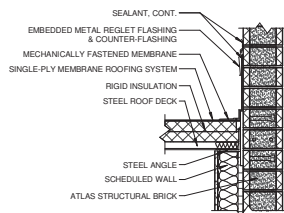
C2
AE506
STEEL JOIST CONT. @ CMU WALL
1" = 1'-0"



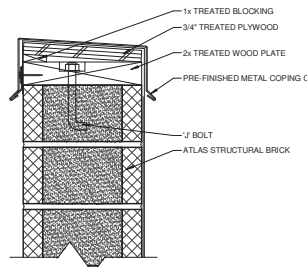
C3
AE506
STEEL JOIST @ CMU WALL GRID 2
1" = 1'-0"



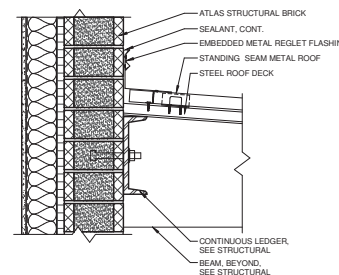
C4
AE506
ROOF DECK @ CMU WALL
1" = 1'-0"



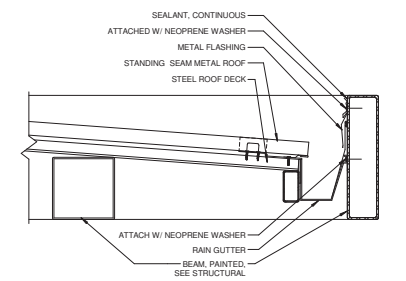
B1
AE506
ROOF DECK TO CMU CONNECTION
1" = 1'-0"



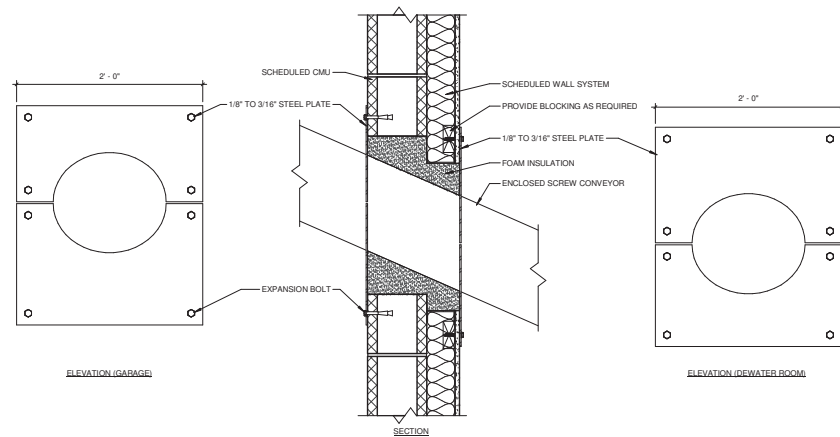
B2
AE506
PARAPET CAP
3\"/>



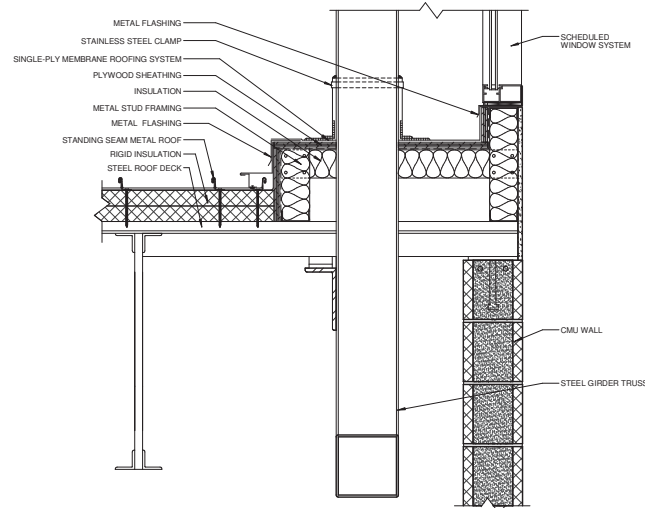
B3
AE506
CANOPY DETAIL
1 1/2\"/>



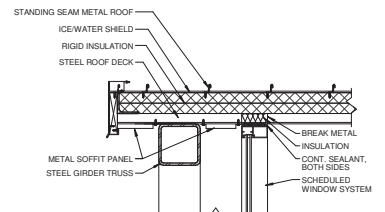
B4
AE506
CANOPY DETAIL
1 1/2\"/>



A1
AE506
WALL PENETRATION @ SCREW CONVEYOR
1 1/2\"/>



A2
AE506
ROOF DETAIL @ TRUSS
1 1/2\"/>



A3
AE506
ROOF DETAIL
1\"/>

CRSA 649 E SOUTH TEMPLE
SLC, UT 84102
801.355.5915
www.crsa-us.com

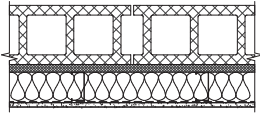
REV. NO. COMMENTS DATE

SUNRISE ENGINEERING
2036 LINCOLN AVE., SUITE 104
OGDEN, UTAH 84401
TEL 801-656-8109 • FAX 801-523-0990
www.sunrise-eng.com

OGDEN CITY
WATER TREATMENT PLANT RECONST.

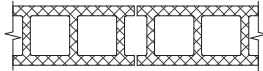
NO.	ISSUED	BY	CHECKED	DATE	NO.	ISSUED	BY	CHECKED	DATE
04655	DT	PN/MC	JN	87	04655	DT	PN/MC	JN	87

AE506



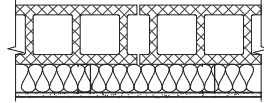
8x4x16 ATLAS STRUCTURAL BRICK
 1" POLYISO INSULATION
 3/8" METAL STUDS @ 16" O.C.
 R-13 BATT INSULATION
 VAPOR BARRIER MEMBRANE
 5/8" HI-IMPACT XP GYP. BD. FROM FINISH FLOOR UP TO 8'-0" A.F.F.
 5/8" GYP. BD. FROM 8'-0" A.F.F. UP TO DECK

1A
 AE601
WALL TYPE 1A
 1 1/2" - 1'-0"



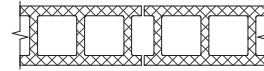
8x4x16 ATLAS STRUCTURAL BRICK

1B
 AE601
WALL TYPE 1B
 1 1/2" - 1'-0"



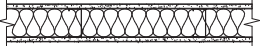
8x8x16 MASONRY
 3/8" METAL STUDS
 5/8" GYP. BD.

2
 AE601
WALL TYPE 2
 1 1/2" - 1'-0"



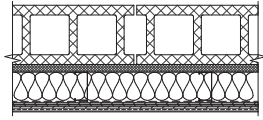
8x8x16 MASONRY

3
 AE601
WALL TYPE 3
 1 1/2" - 1'-0"



5/8" GYP. BD.
 3/8" METAL STUDS
 BATT INSULATION
 5/8" GYP. BD.



4
 AE601
WALL TYPE 4
 1 1/2" - 1'-0"

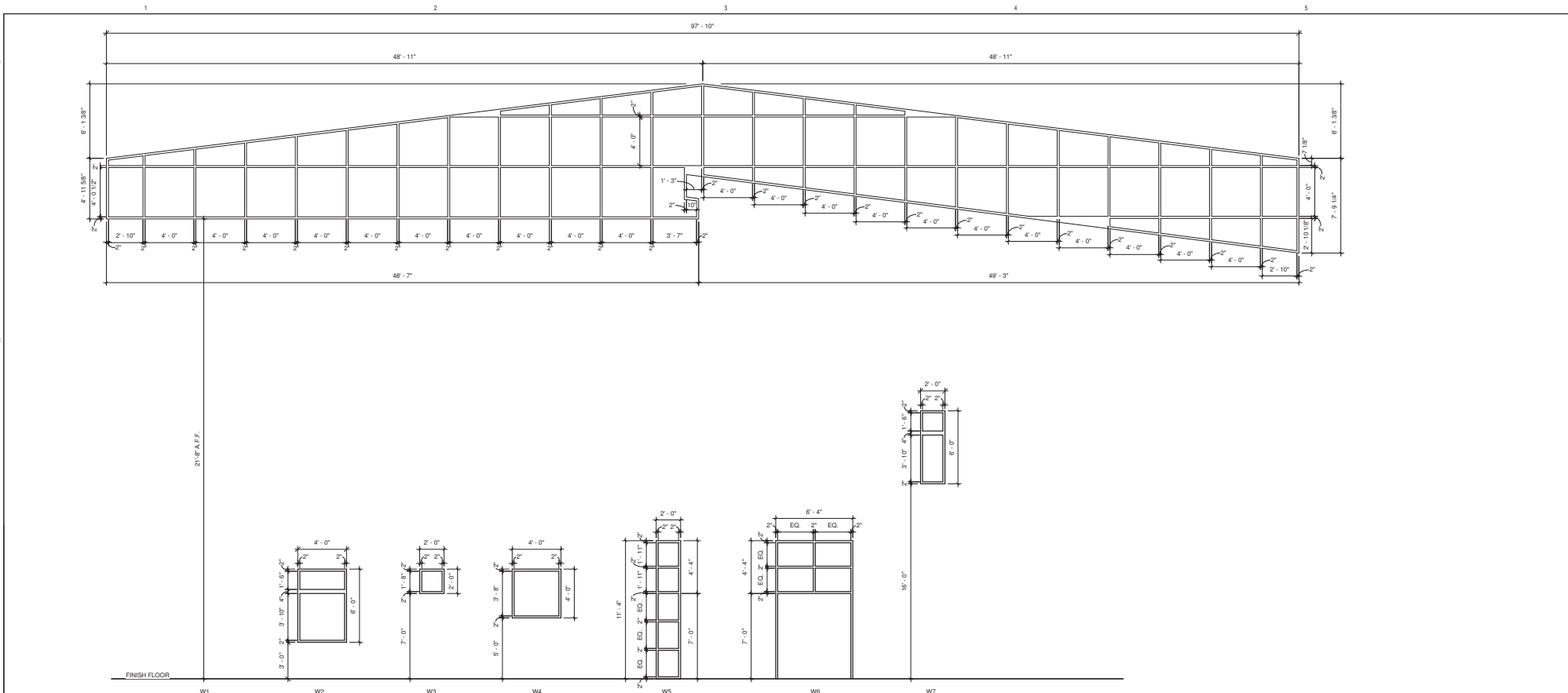


8x4x16 ATLAS STRUCTURAL BRICK
 1" POLYISO INSULATION
 3/8" METAL STUDS @ 16" O.C.
 R-13 BATT INSULATION
 VAPOR BARRIER MEMBRANE
 3/4" PLYWOOD SHEATHING
 SELF-ADHERED WATERPROOFING MEMBRANE
 FRP PANEL

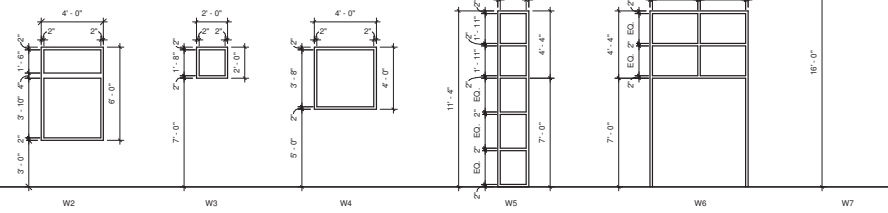
5
 AE601
WALL TYPE 5
 1 1/2" - 1'-0"

C:\shared\Documents_A\0303_01\WP_201_1\part4
 1/18/14 10:29:14

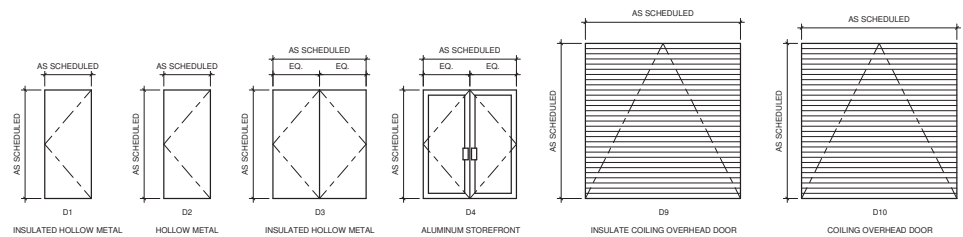
CRSA		649 E SOUTH TEMPLE SLC, UT 84102 801.355.5915 www.crsq-us.com	
REV. NO.	COMMENTS	DATE	
			
2036 LINCOLN AVE., SUITE 104 OGDEN, UTAH 84401 TEL 801-556-8109 • FAX 801-523-0990 www.sunrise-eng.com		OGDEN CITY WATER TREATMENT PLANT RECONST.	
WALL TYPES			
REV. NO.	DESIGNED	DRAWN	CHECKED
04655	DT	PN/MC	JN
SHEET NO.			AE601
88 of 244			



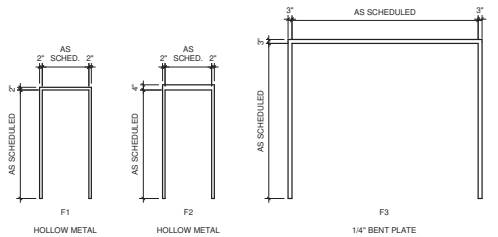
B1 WINDOW TYPES
1/4" = 1'-0"



A1 DOOR TYPES
1/4" = 1'-0"



A4 FRAME TYPES
1/4" = 1'-0"



CRSA		649 E SOUTH TEMPLE SLC, UT 84102 801.355.5915 www.crsa-us.com	
REV. NO.	COMMENTS	DATE	
		SUNRISE ENGINEERING 2036 LINCOLN AVE., SUITE 104 OGDEN, UTAH 84401 TEL 801.556.8109 - FAX 801.523.0990 www.sunrise-eng.com	
BY: 04655	DESIGNED: DT	DRAWN: PNMC	CHECKED: JN
SHEET NO. 89	TOTAL SHEETS 244	AE602	

C:\shared\Documents\A_1003_01\WP_201.dwg
 1/17/21 10:20:34 AM

DOOR SCHEDULE							
DOOR #	SIZE	THICKNESS	FIRE RATING	FRAME TYPE	DOOR TYPE	DOOR PANEL FINISH	NOTES

DEWATERING - LEVEL 01							
D101	3'-0"x7'-0"	1 3/4"		F-HM	F-PAINT	P-W	P-STAIN
D101A	12'-4" x 20'	2"		F-HM	F-PAINT	P-W	P-STAIN
D102	3'-0"x7'-0"	1 3/4"		F-HM	F-PAINT	P-W	P-STAIN
D102A	16'-4" x 20'	2"		F-HM	F-PAINT	P-W	P-STAIN

FILTER - LEVEL 01							
100A	Store Front Double Door						
100B	Store Front Double Door						
101A	3'-0"x7'-0"	1 3/4"		F-HM	F-PAINT	P-W	P-STAIN
101B	3'-0"x7'-0"	1 3/4"		F-HM	F-PAINT	P-W	P-STAIN
101C	3'-0"x7'-0"	1 3/4"		F-HM	F-PAINT	P-W	P-STAIN
101D	3'-0"x7'-0"	1 3/4"		F-HM	F-PAINT	P-W	P-STAIN
101E	3'-0"x7'-0"	1 3/4"		F-HM	F-PAINT	P-W	P-STAIN
104A	3'-0"x7'-0"	1 3/4"		F-HM	F-PAINT	P-W	P-STAIN
105A	3'-0"x7'-0"	1 3/4"		F-HM	F-PAINT	P-W	P-STAIN
107A	3'-0"x7'-0"	1 3/4"		F-HM	F-PAINT	P-W	P-STAIN
108A	3'-0"x7'-0"	2 1/4"		F-HM	F-PAINT	P-W	P-STAIN
109A	3'-0"x7'-0"	1 3/4"		F-HM	F-PAINT	P-W	P-STAIN
110A	3'-0"x7'-0"	1 3/4"		F-HM	F-PAINT	P-W	P-STAIN
110B	3'-0"x7'-0"	1 3/4"		F-HM	F-PAINT	P-W	P-STAIN
110C	3'-0"x7'-0"	1 3/4"		F-HM	F-PAINT	P-W	P-STAIN
111A	3'-0"x7'-0"	1 3/4"		F-HM	F-PAINT	P-W	P-STAIN
111B	3'-0"x7'-0"	1 3/4"		F-HM	F-PAINT	P-W	P-STAIN
112A	3'-0"x7'-0"	1 3/4"		F-HM	F-PAINT	P-W	P-STAIN
112B	10'-4" x 10' 0"	2"					
112C	Door-Floor Access-Bkcr-Smgle-Leaf						
113A	10'-4" x 12'	2"					
113B	10'-4" x 12'	2"					
113C	3'-0"x7'-0"	1 3/4"		F-HM	F-PAINT	P-W	P-STAIN
114A	3'-0"x7'-0"	1 3/4"		F-HM	F-PAINT	P-W	P-STAIN
114B	3'-0"x7'-0"	1 3/4"		F-HM	F-PAINT	P-W	P-STAIN
114C	Door-Floor Access-Bkcr-Smgle-Leaf						

FILTER - LEVEL 02							
201A	3'-0"x7'-0"	1 3/4"		F-HM	F-PAINT	P-HLM	P-PAINT
201B	3'-0"x7'-0"	1 3/4"		F-HM	F-PAINT	P-HLM	P-PAINT
201C	3'-0"x7'-0"	1 3/4"		F-HM	F-PAINT	P-HLM	P-PAINT
210A	2'-0"x2'-0"	1 3/4"		F-HM	F-PAINT	P-W	P-STAIN

NOTE: SEE SPECIFICATION 08 71 00 FOR HARDWARE SET.

ROOM FINISH SCHEDULE										
NO.	ROOM NAME	FLOOR	BASE	WALLS				CEILING FINISH	CEILING HEIGHTS	NOTES
				NORTH	SOUTH	EAST	WEST			

DEWATERING - LEVEL 01										
D101	DEWATER ROOM	C	RB	PT - 1	PT - 1	PT - 1	PT - 1	PT - 2	OTS	
D102	GARAGE	C	--	CMU - 1	CMU - 1	CMU - 1	CMU - 1	PT - 2	OTS	

FILTER - LEVEL 01										
100	ENTRY	C	--	CMU - 1	CMU - 1	--	--	PT - 2	OTS	
101	FILTER ROOM	C	RB*	PT - 1	CMU - 1	CMU - 1	CMU - 1	PT - 2	OTS	*BASE ON METAL FRAMED GYP. BOARD WALLS ONLY
102	ELECTRICAL	C	RB*	PT - 1	PT - 1	PT - 1	CMU - 1	PT - 2	OTS	*BASE ON METAL FRAMED GYP. BOARD WALLS ONLY
103	LAB	C	RB*	PT - 1	PT - 1	PT - 1	CMU - 1	GBC	9'-4"	*BASE ON METAL FRAMED GYP. BOARD WALLS ONLY
104	MEN	C	RB*	PT - 1	PT - 1	PT - 1	CMU - 1	GBC	9'-4"	*BASE ON METAL FRAMED GYP. BOARD WALLS ONLY
105	SHOWER	C	RB	PT - 1	PT - 1	PT - 1	PT - 1	GBC	9'-4"	
106	LOCKER	C	RB*	PT - 1	PT - 1	PT - 1	PT - 1	GBC	9'-4"	*BASE ON METAL FRAMED GYP. BOARD WALLS ONLY
107	LANTOR	C	RB	PT - 1	FRP	FRP	FRP	PT - 2	OTS	
108	WOMEN	C	RB*	PT - 1	PT - 1	PT - 1	PT - 1	GBC	9'-4"	*BASE ON METAL FRAMED GYP. BOARD WALLS ONLY
109	BREAK RM	C	RB	PT - 1	PT - 1	PT - 1	PT - 1	CS - 1	9'-4"	
110	OFFICE	C	RB	PT - 1	PT - 1	PT - 1	PT - 1	CS - 1	9'-4"	
111	CONTROL ROOM	C	RB	PT - 1	PT - 1	PT - 1	PT - 1	CS - 1	9'-4"	
111A	SERVER	C	--	PT - 1	PT - 1	PT - 1	PT - 1	CS - 1	9'-4"	
112	CHEMICAL EFFICIPI	C	--	CMU - 2	FRP	CMU - 2	FRP	PT - 2	9'-4"	
113	GARAGE	C	--	CMU - 1	CMU - 1	CMU - 1	PT - 1	PT - 2	OTS	
114	REVERSE FEED PUMPS ROOM	C	RB	PT - 1	PT - 1	PT - 1	PT - 1	PT - 2	OTS	

FILTER - LEVEL 02										
201	BOARD ROOM	CPT	RB	PT - 1	PT - 1	PT - 1	PT - 1	CS - 1	9'-4"	
202	BREAK RM	C	RB	PT - 1	PT - 1	PT - 1	PT - 1	PT - 2	OTS	
203	STORAGE	C	RB*	PT - 1	PT - 1	PT - 1	CMU - 1	PT - 2	OTS	*BASE ON METAL FRAMED GYP. BOARD WALLS ONLY

FLOORING	
CPT	CARPET TILE
C	CONCRETE SEALER (CLEAR WITH SLIP RESISTANT ABRASIVE GRIT)
CEILING	
CS - 1	ACOUSTICAL CEILING TILE 24" X 24" AND GRID
PT - 2	CEILING PAINT
PT - 3	
OTS	OPEN TO STRUCTURE
GBC	GYPSUM BOARD CEILING, PAINT PT - 2
WALLS	
CMU - 1	EXPOSED CMU BLOCK, PAINT PT - 1
CMU - 2	EXPOSED CMU BLOCK, PAINT PT - 4
PT - 1	PAINT GYPSUM BOARD FINISH
PT - 4	WATERPROOFING PAINT
FRP - 1	FIBRE REINFORCED PLASTIC
BASE	
RB	RUBBER OR VINYL WALL BASE

	649 E SOUTH TEMPLE	
	SLC, UT 84102 801.355.5915 www.crsa-us.com	
REV. NO.	COMMENTS	DATE
		
		
2036 LINCOLN AVE., SUITE 104 OGDEN, UTAH 84401 TEL 801.556.8109 -- FAX 801.523.0990 www.sunrise-eng.com		
OGDEN CITY WATER TREATMENT PLANT RECONST. DOOR & FINISH SCHEDULE		
DWG NO. 04655	DESIGNED DT	DRAWN PNMC
CHECKED JN	DATE 90	SHEET NO. of 244 AE603