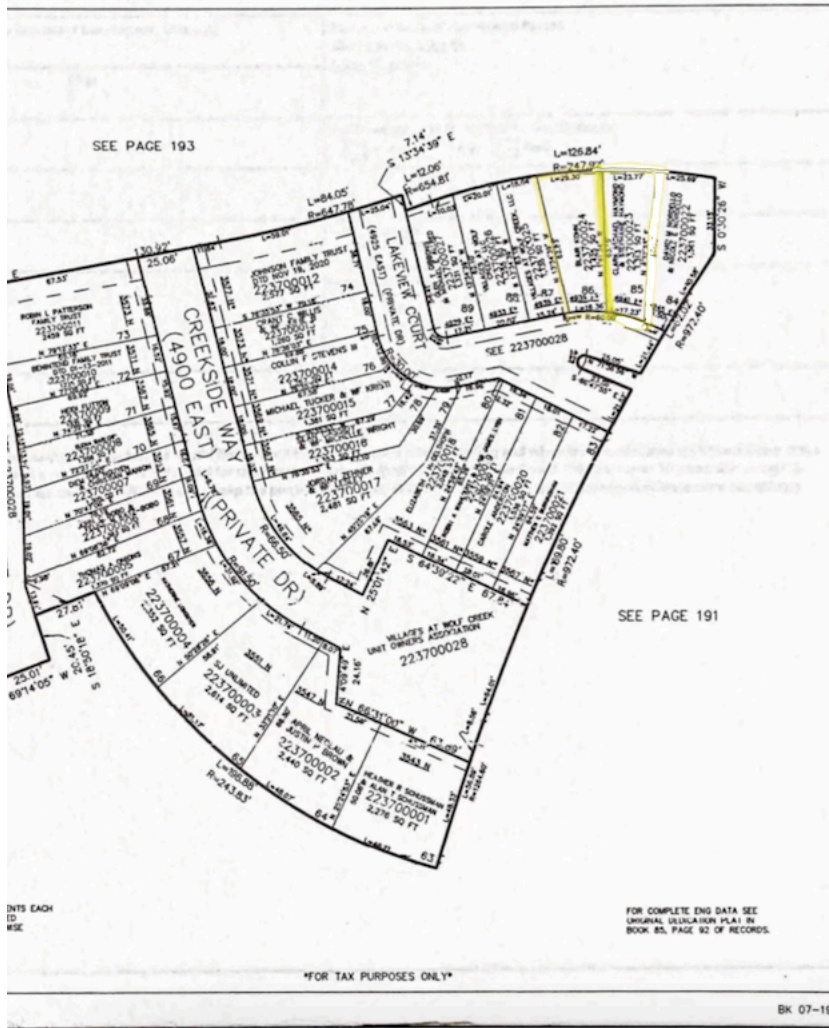


PART OF THE SW. 1/4, OF SECTION 22, T.7N., R.1E., S.L.B. & M.
VILLAGE AT WOLF CREEK 1ST AMENDMENT

370

IN WEBER COUNTY
SCALE 1" = 30'

03



SEE PAGE 193

SEE PAGE 191

INTS EACH
ID
#5C

FOR COMPLETE ENG DATA SEE
ORIGINAL SURVEYOR PLAT IN
BOOK 85, PAGE 92 OF RECORDS.

FOR TAX PURPOSES ONLY

BK 07-19