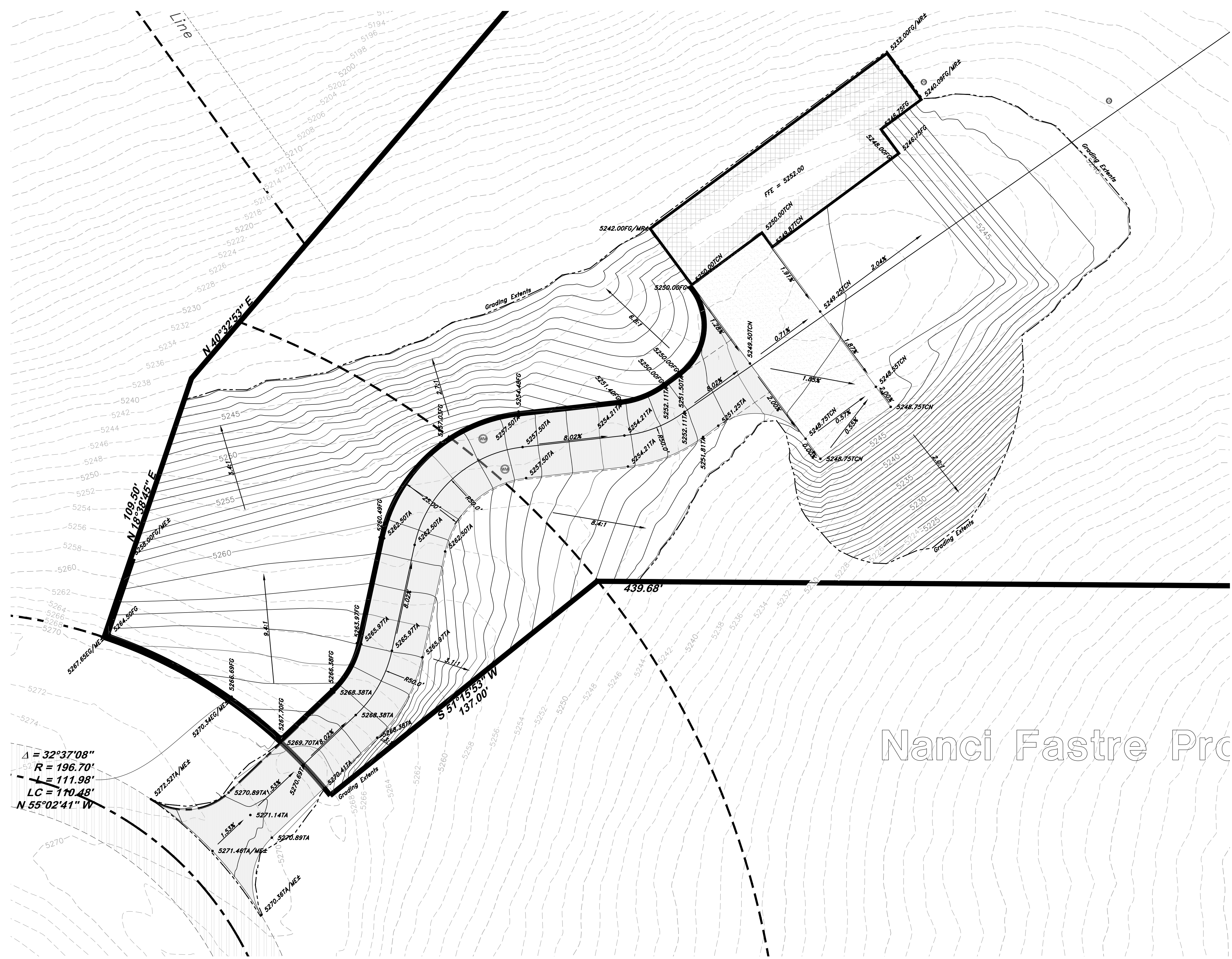


### Legend

(Note: All items may not appear on drawing)

- San. Sewer Manhole
- Water Manhole
- Storm Drain Manhole
- Electrical Manhole
- Catch Basins
- Exist. Fire Hydrant
- Fire Hydrant
- Exist. Water Valve
- Water Valve
- Sanitary Sewer
- Culinary Water
- Gas Line
- Irrigation Line
- Storm Drain
- Overhead Telephone Line
- Underground Telephone
- Secondary Waterline
- Underground Power Line
- Overhead Power Line
- Fire Line
- Land Drain
- Power pole
- Power pole w/guy
- Light Pole
- Fence
- Flowline of ditch
- Corrugated Metal Pipe
- Concrete Pipe
- Reinforced Concrete Pipe
- Ductile Iron
- Polyvinyl Chloride
- Top of Asphalt
- Edge of Asphalt
- Centerline
- Flowline
- Finish Floor
- Top of Curb
- Top of Wall
- Top of Concrete
- Top of Walk
- Top of Concrete
- Finish Contour
- Exist. Contour
- Finish Grade
- Exist. Grade
- Ridge Line
- Direction of Flow
- Existing Asphalt
- New Asphalt
- Heavy Duty Asphalt
- Concrete
- Open Face
- Curb & Gutter



$\Delta = 32^\circ 37' 08''$   
 $R = 196.70'$   
 $L = 111.98'$   
 $LC = 110.48'$   
 $N 55^\circ 02' 41'' W$

Nanci Fastre Pro

NO.	DESCRIPTION	REV.	DATE

Preliminary  
Not for  
Construction

**GREAT BASIN ENGINEERING**

5746 SOUTH 11475 EAST, OGDEN, UTAH 84403  
 MAIN (801) 534-4515 FAX (801) 534-7504  
 WWW.GREATBASINENGINEERING.COM

**Grading & Drainage Plan**  
**Samarel Property**

8 MAR 2023

SHEET NO.  
**C2.1**

20224