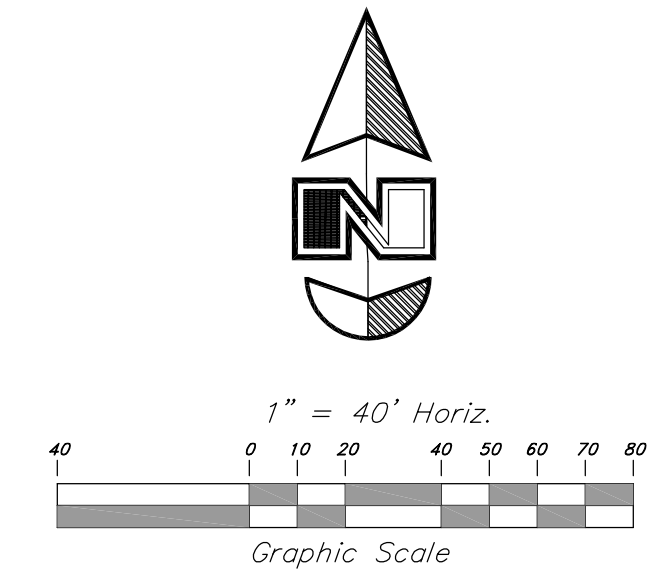


Hansen Subdivision

A part of the Northeast Quarter of Section 24, T6N, R1E, SLB & M., U.S.
Survey Weber County, Utah
October 2022



Legend

(Note: All items may not appear on drawing)

- San. Sewer Manhole
- Storm Drain Manhole
- Catch Basin
- Exist. Fire Hydrant
- Fire Hydrant
- Exist. Water Valve
- Water Valve
- Sanitary Sewer
- Culinary Water
- Gas Line
- Irrigation Line
- Storm Drain
- Telephone Line
- Secondary Waterline
- Power Line
- Fire Line
- Land Drain
- Power pole
- Power pole w/guy
- Light Pole
- Fence
- Flowline of ditch
- Overhead Power line
- Corrugated Metal Pipe
- Concrete Pipe
- Ductile Iron
- Polyvinyl Chloride
- Top of Asphalt
- Edge of Asphalt
- Centerline
- Flowline
- Top of Curb
- Finish Floor
- Finish Grade
- Top of Wall
- Top of Walk
- Top of Concrete
- Finish Contour
- Exist. Contour
- Finish Grade
- Exist. Grade
- Ridge Line
- Direction of Flow
- Monument
- Section Corner
- Rebar & Cap
- Existing Asphalt
- New Asphalt

Northwest corner of Section 24
T6N, R1E, SLB&M, US Surveyor
Found Bureau of Land
Management Good Condition (0.5'
above ground)
Brass Cap - (1987)

(Section Line)
S 89°36'57" E
(S 89°36'44" E W.C.S.)

2660.60'
Calc. from measurements
(2660.83' W.C.S.)
(Basis of Bearing)

2655.23' W.C.S.

1717.93'

North 1/4 corner of Section 24
T6N, R1E, SLB&M, US Surveyor
Found Weber County Brass Cap
(1991) Good condition
(0.5' above ground)

2655.23' W.C.S.

N 0°22'51" E W.C.S.

2655.23' W.C.S.

N 0°22'51" E W.C.S.

(N 0°22'58" E)

(2654.32' calc. from W.C.S.)

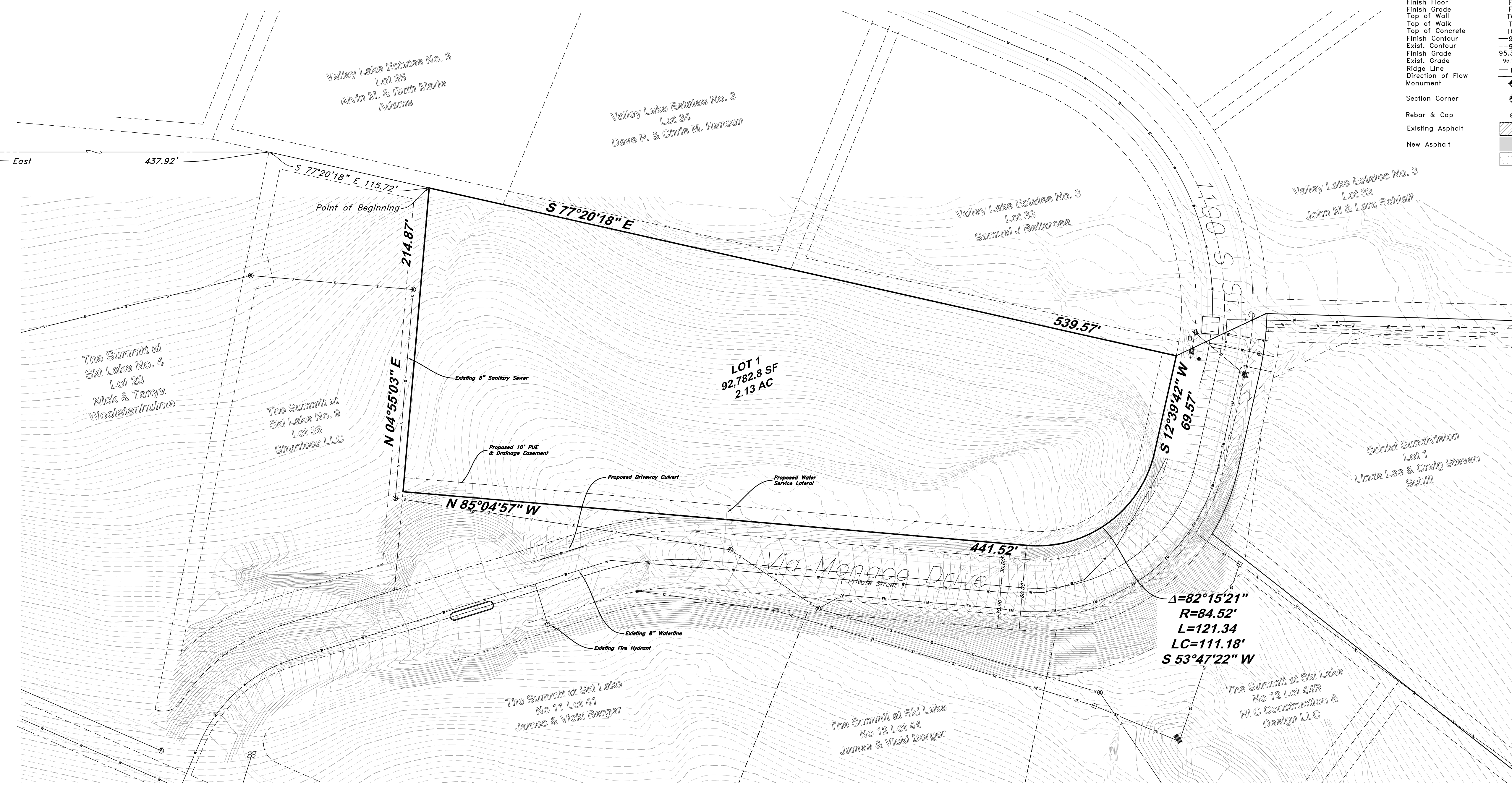
S 89°45'09" E

1/4 Section Line

Center of Section 24
T6N, R1E, SLB&M, US Surveyor
(Found Weber County Monument,
dated 2005,
Good Condition)

West corner of Section 24
T6N, R1E, SLB&M, US Surveyor
(Not Found - position calc. from
Positions Map)
Weber County Monument

- ### LEGEND
- Found Rebar & Cap w/Fencepost
 - Set 3/8" Rebar (24" long) & cap w/Fencepost
 - ◆ Section corner
 - ⊙ Monument



GREAT BASIN ENGINEERING
 5746 SOUTH 1475 EAST OGDEN, UTAH 84403
 MAIN (801) 994-4515 S.L.C. (801) 392-7544
 WWW.GREATBASINENGINEERING.COM

Preliminary Plan
Hansen Subdivision
 A part of the Northeast Quarter of Section 24,
 T6N, R1E, SLB&M, U.S. Survey
 Weber County, Utah

SHEET NO.	DATE
1	

DEVELOPER:
Dave & Chris Hansen
6819 E 1100 S
Huntsville, UT 84317

CAUTION
The location and/or elevation of existing utilities as shown on these plans is based on records of the various utility companies and, where possible, measurement taken from the field. The information is not to be relied on as being exact or complete.