

NOTES: SEE SPECIFICATIONS

1. ALL VENTS AND WINDOW SHALL HAVE NO.16 STAINLESS STEEL SCREENING AND ALL VENTS SHALL HAVE INSULATED LOUVERS RATED FOR THE SITE CONDITIONS.
2. WELL HEAD ROOM SHALL HAVE A FAN AND EXHAUST VENT WITH INSULATED LOUVRE, VENTILATION SHALL BE CONTROLLED BY SWITCH OR TEMPERATURE SETTING.
3. OUTDOOR LIGHTING SHALL CONFORM TO OGDEN VALLEY OUTDOOR LIGHTING STANDARDS. LIGHT COLOR 3000K OR LESS, LIGHT SHALL BE FULLY SHIELDED FROM PROJECTING INTO SKY AND ADJACENT LOTS. LIGHTS SHALL BE OPERATED BY SENSORS, WITH A TWO MINUTE TIME SHUT OFF SETTING.
4. MATERIAL COLORS OF THE OUTER WELL HOUSE SHALL BE OF EARTHEN COLORS AND APPROVED BY ENGINEER.
5. HANG 1/2" SAG-AND MOISTURE-RESISTANT DRY WALL ON CEILING, PRIME + PAINT W/ 2 COATS SEMI- GLOSS ENAMEL.
6. INSTALL R-38 BATTING IN ATTIC AND INSTALL EXTERIOR WALLS WITH R-38 VALUE INSULATION PER CODE.
7. INSTALL WOOD (NO PRESS BOARD) AROUND WALL/CEILING INTERFACE, W/ PRIMER AND 2 COATS SEMI GLOSS ENAMEL PAINT.
8. INSTALL MOISTURE BARRIER AND STEEL ROOFING SYSTEM. ATTIC VENTING AS PER WEBER COUNTY BUILDING CODE.
9. PROVIDE ATTIC ACCESS PER CODE, TRIM OPENINGS.
10. PROVIDE APPROPRIATELY LOCATED AND SIZED OPENING IN CEILING W/ REMOVABLE CEILING PANEL FOR ATTIC ACCESS. PANELS SHALL BE INSULATED, TRIM CEILING AROUND OPENING.

Revisions	Date	Description

Date:	11/14/22
Scale:	
Designed:	MDD
Drafted:	MDD
Checked:	DLW

ELEVATION
WCWSID - EAST WELL
5665 EAST ELK HORN DRIVE
EDEN, WEBER, UTAH

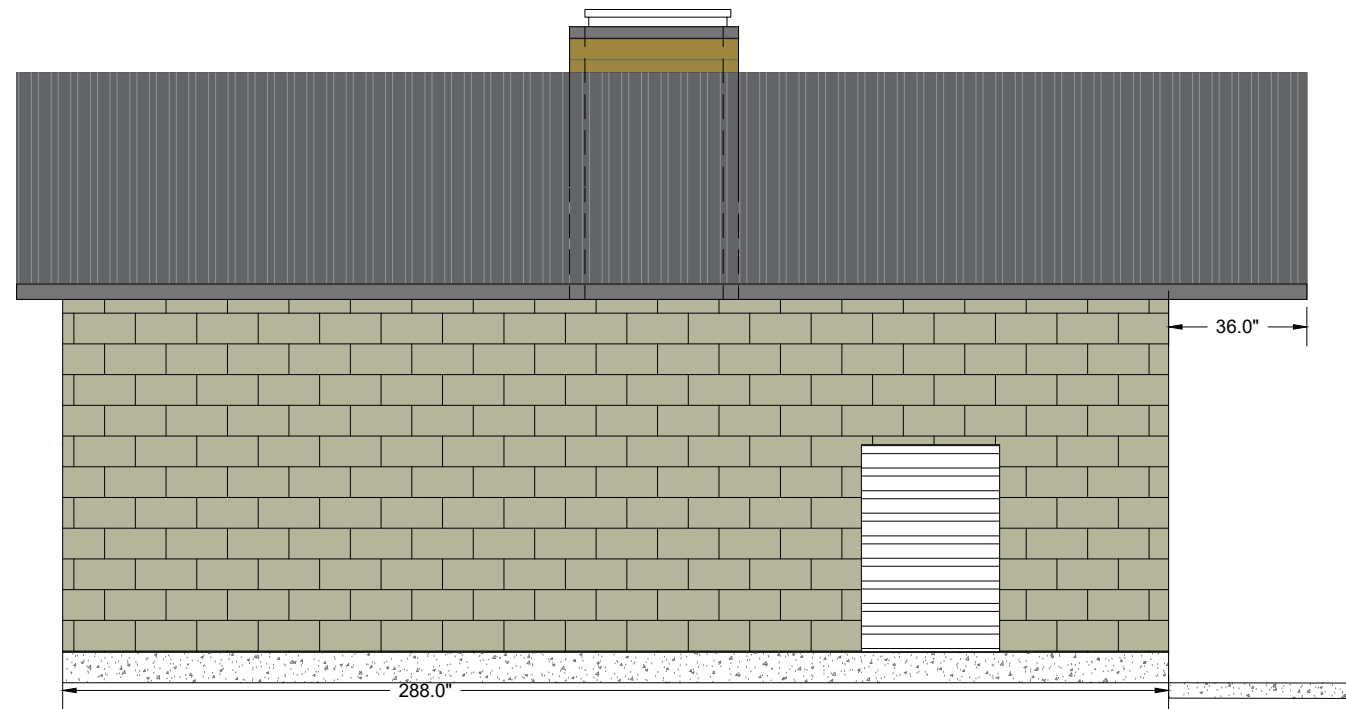
GARDNER ENGINEERING
CIVIL • LAND PLANNING
MUNICIPAL • LAND SURVEYING

5150 SOUTH 375 EAST OGDEN, UT
OFFICE: 801.476.0202 FAX: 801.476.0066

W1
NUM



SOUTH WEST ELEVATION



NORTH EAST ELEVATION

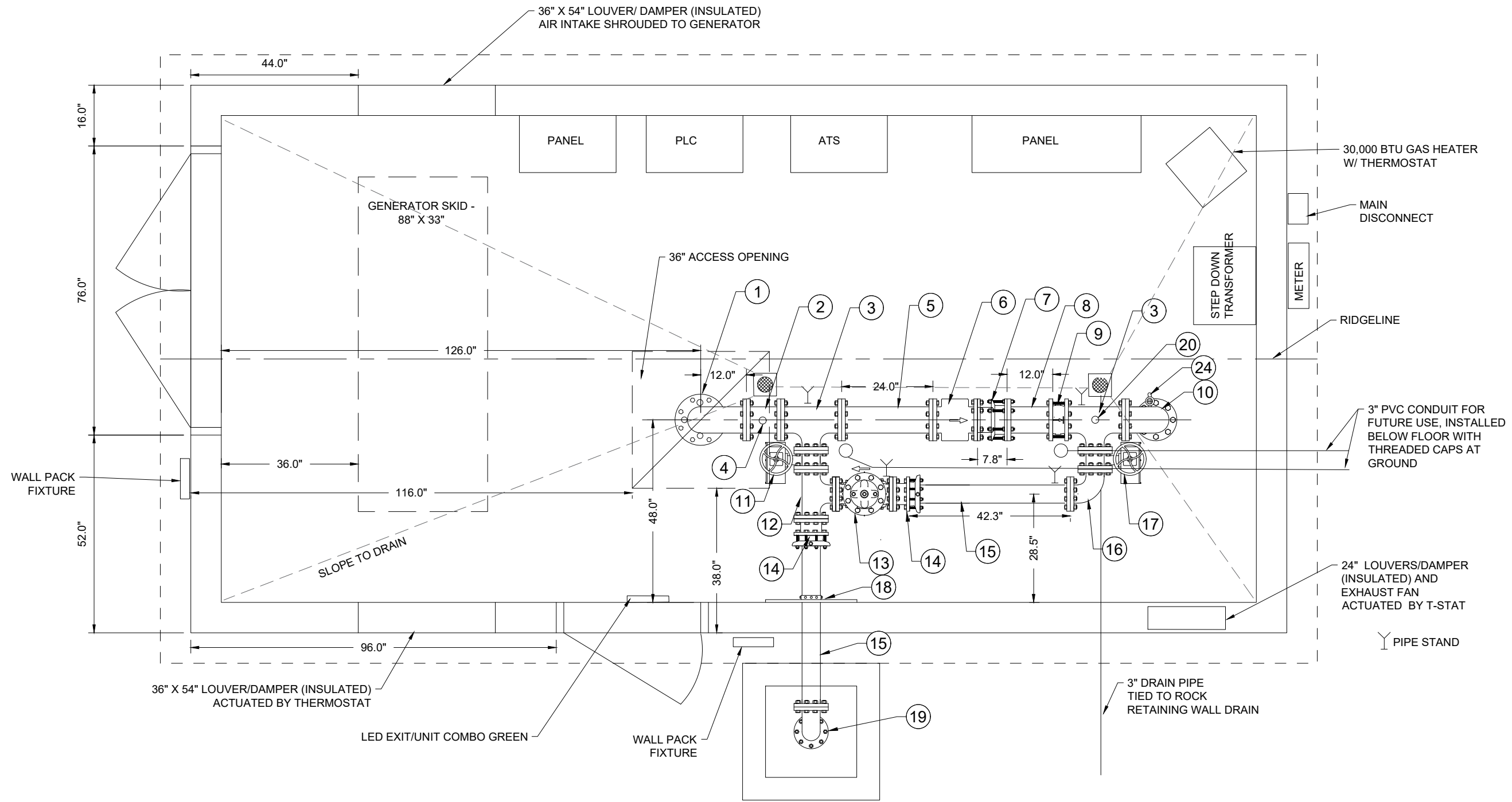
- NOTES: SEE SPECIFICATIONS
1. ALL VENTS AND WINDOW SHALL HAVE NO.16 STAINLESS STEEL SCREENING AND ALL VENTS SHALL HAVE INSULATED LOUVERS RATED FOR THE SITE CONDITIONS.
 2. WELL HEAD ROOM SHALL HAVE A FAN AND EXHAUST VENT WITH INSULATED LOUVRE, VENTILATION SHALL BE CONTROLLED BY SWITCH OR TEMPERATURE SETTING.
 3. OUTDOOR LIGHTING SHALL CONFORM TO OGDEN VALLEY OUTDOOR LIGHTING STANDARDS. LIGHT COLOR 3000K OR LESS, LIGHT SHALL BE FULLY SHIELDED FROM PROJECTING INTO SKY AND ADJACENT LOTS. LIGHTS SHALL BE OPERATED BY SENSORS, WITH A TWO MINUTE TIME SHUT OFF SETTING.
 4. MATERIAL COLORS OF THE OUTER WELL HOUSE SHALL BE OF EARTHEN COLORS AND APPROVED BY ENGINEER.
 5. HANG 1/2" SAG-AND MOISTURE-RESISTANT DRY WALL ON CEILING, PRIME + PAINT W/ 2 COATS SEMI- GLOSS ENAMEL.
 6. INSTALL R-38 BATTING IN ATTIC AND INSTALL EXTERIOR WALLS WITH R-38 VALUE INSULATION PER CODE.
 7. INSTALL WOOD (NO PRESS BOARD) AROUND WALL/CEILING INTERFACE, W/ PRIMER AND 2 COATS SEMI GLOSS ENAMEL PAINT.
 8. INSTALL MOISTURE BARRIER AND STEEL ROOFING SYSTEM. ATTIC VENTING AS PER WEBER COUNTY BUILDING CODE.
 9. PROVIDE ATTIC ACCESS PER CODE, TRIM OPENINGS.
 10. PROVIDE APPROPRIATELY LOCATED AND SIZED OPENING IN CEILING W/ REMOVABLE CEILING PANEL FOR ATTIC ACCESS. PANELS SHALL BE INSULATED, TRIM CEILING AROUND OPENING.

Revisions		Date	Description

Date:	11/14/22
Scale:	
Designed:	MDD
Drafted:	MDD
Checked:	DLW

ELEVATION (2)
WCWSID - EAST WELL
5665 EAST ELK HORN DRIVE
EDEN, WEBER, UTAH

W2
 NUM



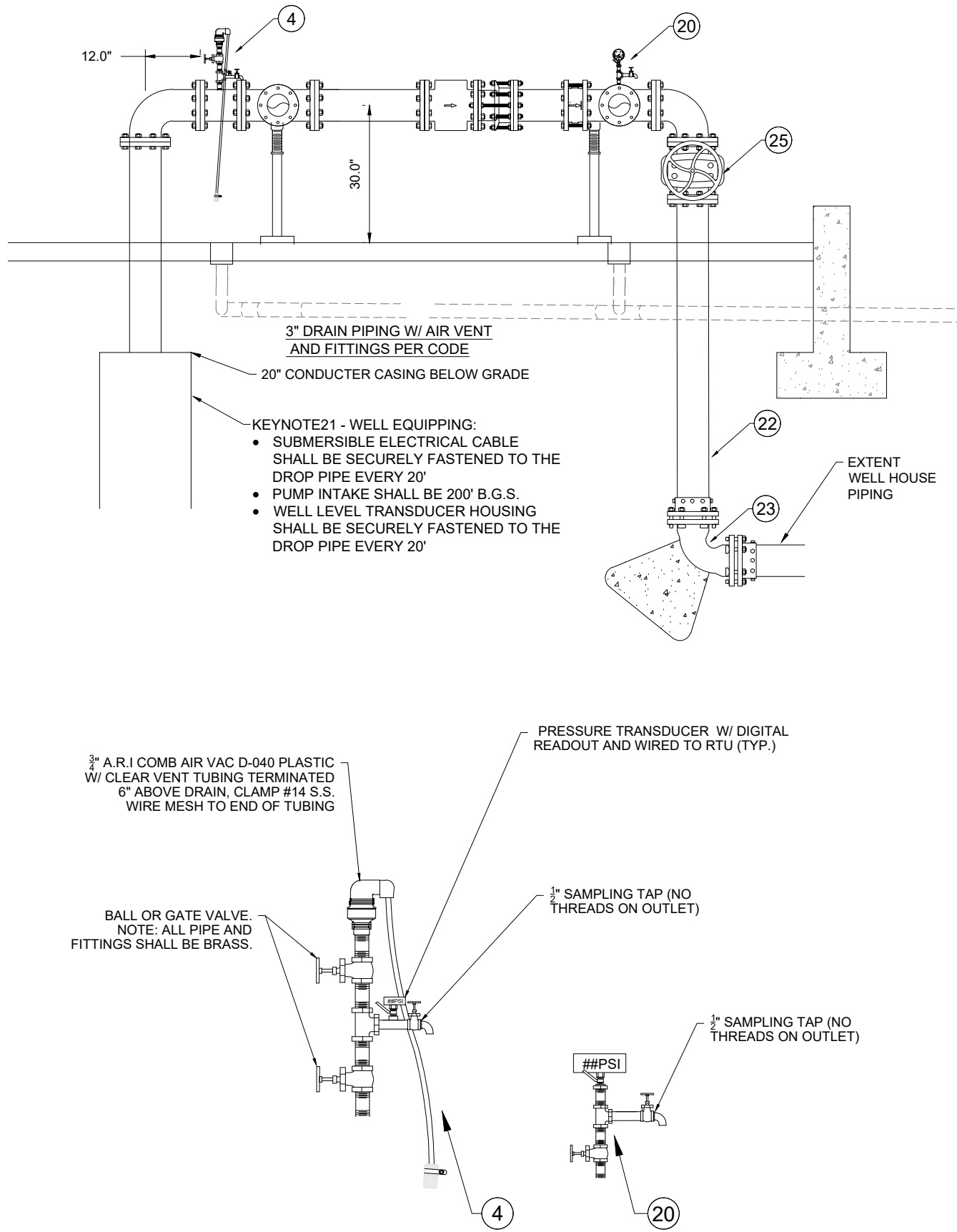
Revisions	Date	Description

Date:	11/14/22
Scale:	
Designed:	MDD
Drafted:	MDD
Checked:	DLW

WELL PLAN
 WCVSID - EAST WELL
 5665 EAST ELK HORN DRIVE
 EDEN, WEBER, UTAH

GARDNER ENGINEERING
 CIVIL • LAND PLANNING
 MUNICIPAL • LAND SURVEYING
 5150 SOUTH 375 EAST OGDEN, UT
 OFFICE: 801.476.0202 FAX: 801.476.0066

W3
 NUM



- KEYNOTE21 - WELL EQUIPPING:**
- SUBMERSIBLE ELECTRICAL CABLE SHALL BE SECURELY FASTENED TO THE DROP PIPE EVERY 20'
 - PUMP INTAKE SHALL BE 200' B.G.S.
 - WELL LEVEL TRANSDUCER HOUSING SHALL BE SECURELY FASTENED TO THE DROP PIPE EVERY 20'

Bill of Materials - Well House Equipping

Keynote #	Qty	Description	Notes
1	1	7x6 Discharge Head/Elbow	3 taps in flange for: power, transducer housing, casing vent
2	1	6" spool FLGxFLG	9" long, with direct tap for airvac
3	2	6" x 4" tee FLGxFLG	
4	2	3/4" Combination air vac assembly	3/4" tap, 3/4" fittings and brass piping, pressure transducer, see detail for components
5	1	6" spool FLGxFLG	24" long
6	1	6" magnetic flow meter	Direct mount readout, 4-20mA and pulse output connected to PLC, Rosemount 8750 W or approved equal
7	1	6" Restrained flanged coupling adapter	Romac, or approved equal
8	1	6" spool FLG x PE	24" length, field cut as needed
9	1	6" wafer style silent check valve	Val-Matic, or approved equal, drip tight
10	1	6" 90 degree elbow FLGxFLG	3/4" tap in "M" position
11	1	4" resilient seated butterfly valve FLGxFLG w/ manual and powered actuator	Valve: Keystone F221 Actuator: Keystone EPI2 with adjustable stroking times, 120V. or approved equal
12	1	4" tee FLGxFLG	
13	2	4" Pressure relief valve	Singer 106-RPS, set at pressure 20 #'s above static, atmospheric discharge
14	1	4" Restrained flange coupling adapter	Romac, or approved equal
15	2	4" spool FLG x PE	48" length, field cut as needed
16	1	4" 90 degree elbow	
17	1	4" butterfly valve FLGxFLG w/ manual actuator	Valve: Keystone F221 or approved equal
18	1	1/4" thick steel thrust plate	slotted around 4" pipe with restrained to wall and pipe with set-screw retainer gland
19	1	4" 90 degree elbow/ with screening	As shown on plans with downturn 90 elbow and # 4 mesh 316 SS screen, secured to elbow with flange adapter.
20	1	pressure transducer and hose bib	3/4" tap. Pressure transducer with readout, thd w/ ball valve. 1/2" smooth nose sampling tap with ball valve, brass piping
21	1 Lot	Well equipping	Seal plate on 7" casing, 7" x 6" flanged discharge head (Keyed item #1, above), transducer, transducer housing, submersible pump, drop pipe with check valve, submersible cable, casing vent
22	1	6" spool FLGxPE	8' length
23	1	6" 90 degree elbow MJxMJ	w/ thrust block
24	1	3/4" hose bib	3/4" tap with valve and bib, on elbow
25	1	6" Gate Valve FLG x FLG	

Date: 11/14/22	Scale:	Designed: MDD	Drafted: MDD	Checked: DLW
Revisions	Description			
Date				
WELL MATERIALS WCWSID - EAST WELL 5665 EAST ELK HORN DRIVE EDEN, WEBER, UTAH				
 <small>CIVIL • LAND PLANNING MUNICIPAL • LAND SURVEYING</small> <small>5150 SOUTH 375 EAST OGDEN, UT OFFICE: 801.476.0202 FAX: 801.476.0066</small>				
<div style="display: flex; justify-content: space-between; align-items: center;"> W4 NUM </div>				

R:\2319 - WOLF CREEK WATER AND SEWER\2104- EAST WELL\DESIGN\DWG\EAST WELL PIPING.DWG