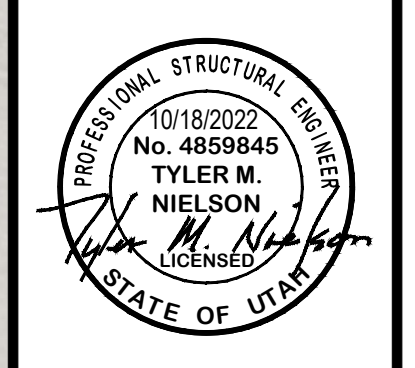


REVISIONS	DATE	DESCRIPTION



SITE PLAN

WEST FIELD SR SEMINARY

2200 S 4350 W

TAYLOR, WEBER, UTAH

GARDNER ENGINEERING

CIVIL - LAND PLANNING
MUNICIPAL - LAND SURVEYING

51150 SOUTH 375 EAST OGDEN, UT
OFFICE: 801.476.0202 FAX: 801.476.0066

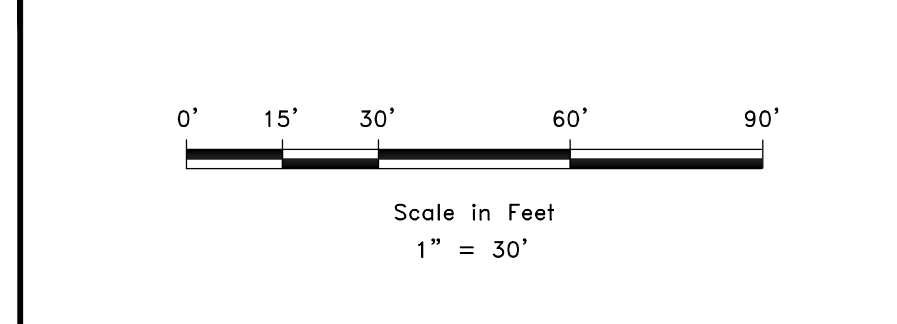
CE1-01

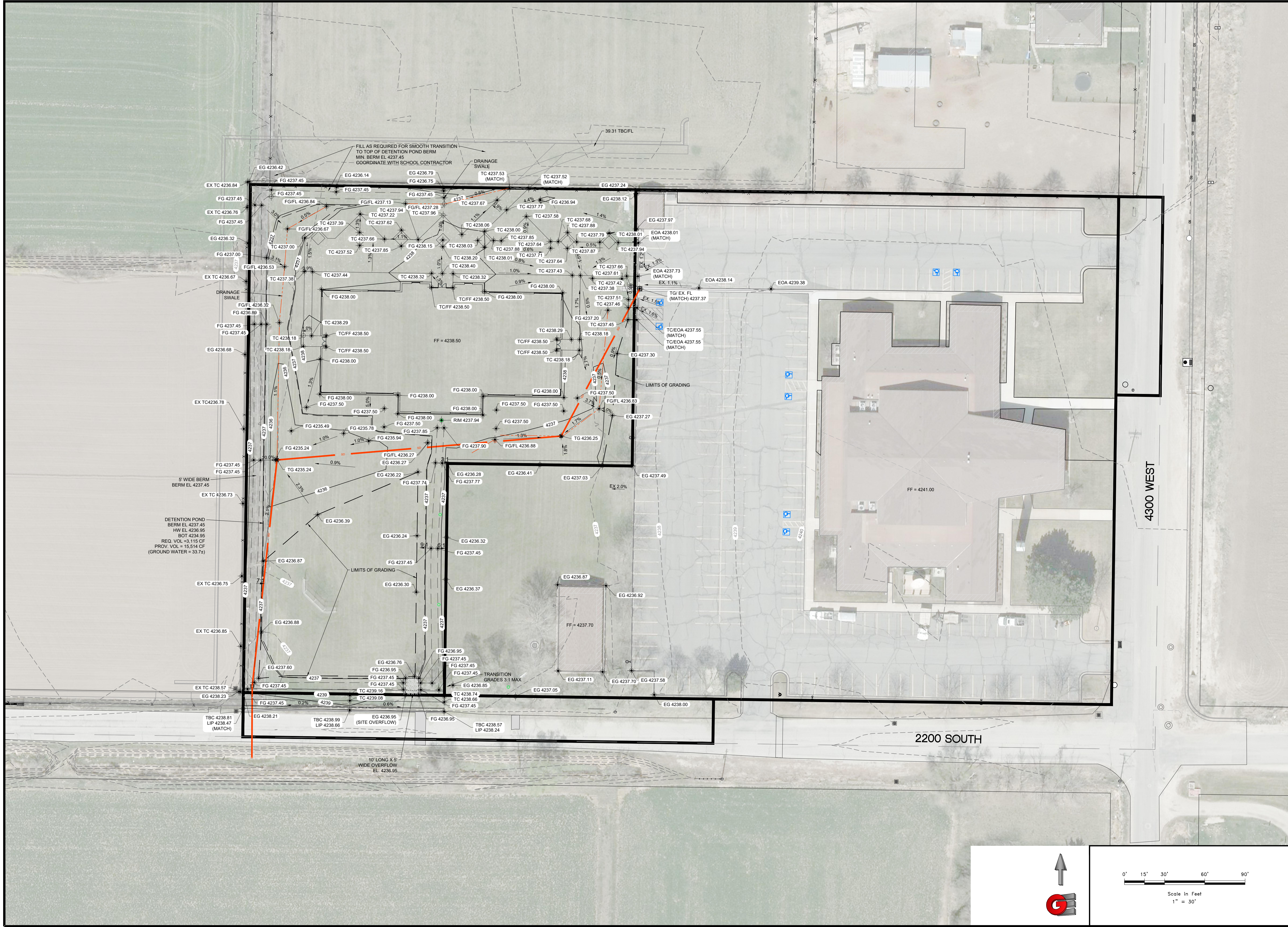
220 AVAILABLE PARKING STALLS
(INCLUDES 4 EXISTING ADA STALLS
AND 2 NEW ADA STALLS FOR SEMINARY)

SITE AREA = 1.96 ACRE
NEW LANDSCAPE AREA = 1.22 ACRE

DEVELOPER:

THE CHURCH OF JESUS CHRIST
OF LATTER-DAY SAINTS
UTAH NORTH PM OFFICE
ATTN: BRIAN CHILDS
435 NORTH WALL AVE, STE D
OGDEN, UT 84404





REVISIONS	DESCRIPTION
DATE	

SCALE: 1" = 30'

DATE: 10/18/2022

DESIGN: W.J.S.

DRAWN: J.K.H./M.S.

CHECKED: T.M.N.

DWG.:

GRADING PLAN

WEST FIELD SR SEMINARY

2200 S 4350 W

TAYLOR, WEBER, UTAH

GARDNER ENGINEERING

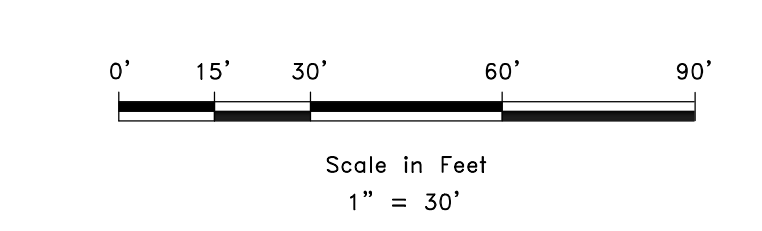
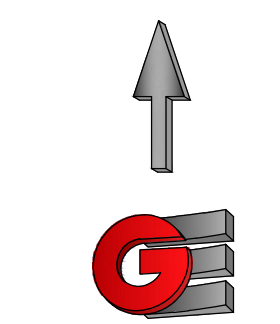
CIVIL - LAND PLANNING

MUNICIPAL - LAND SURVEYING

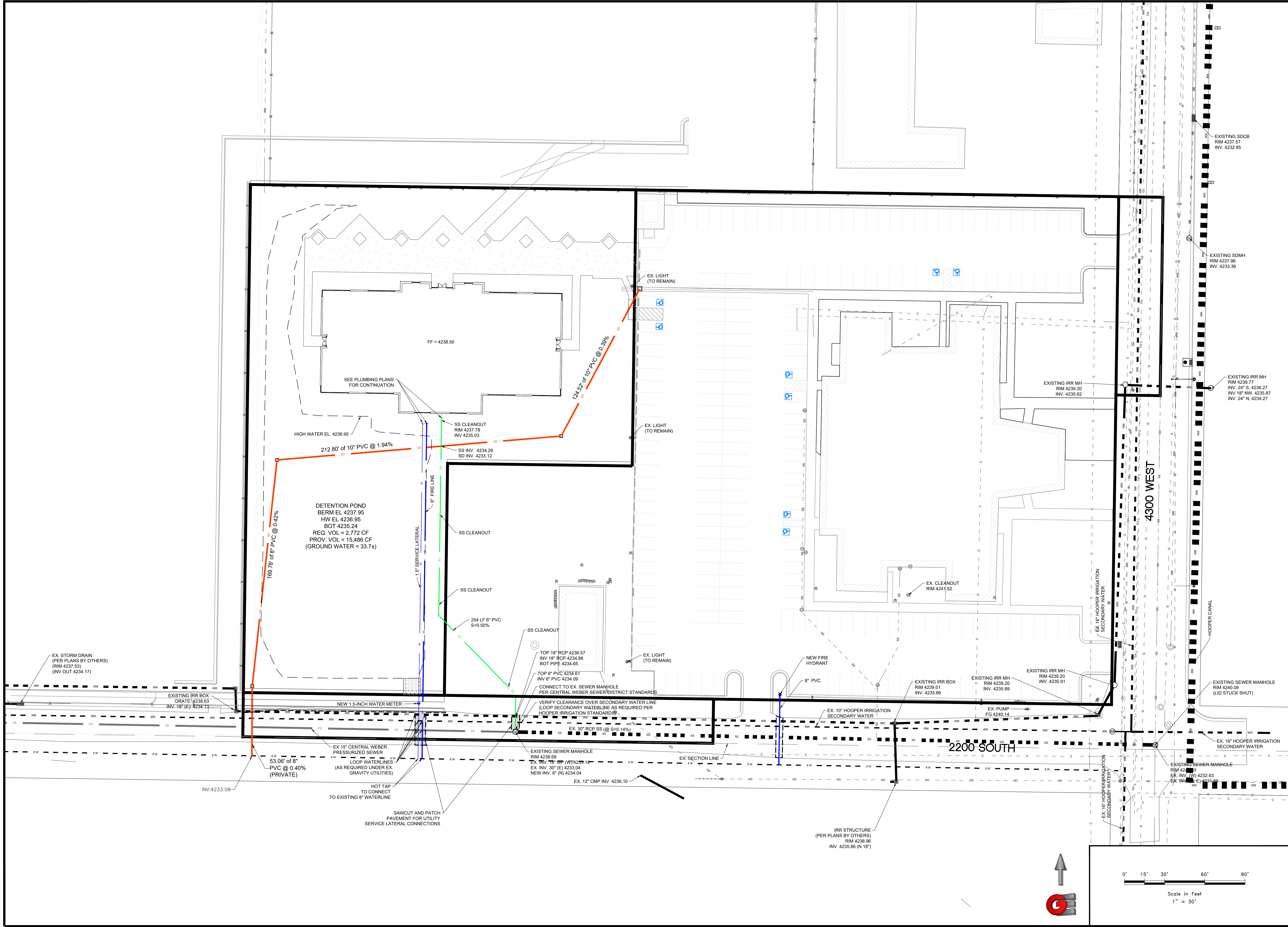
5150 SOUTH 375 EAST OGDEN, UT

OFFICE: 801.476.0202 FAX: 801.476.0066

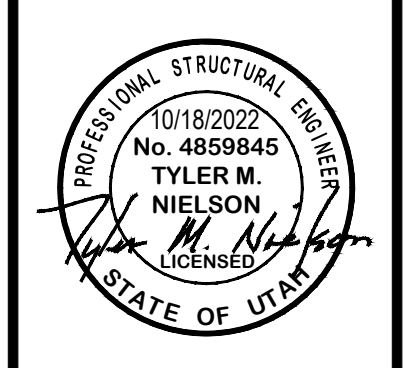
CE2-01



R:\0204 - BOTI PANTONE\2202 - WEST FIELD HIGH SEMINARY\DESIGN\DWG\WEST FIELD HIGH SEMINARY BUILDING.DWG



REVISIONS	DATE	DESCRIPTION

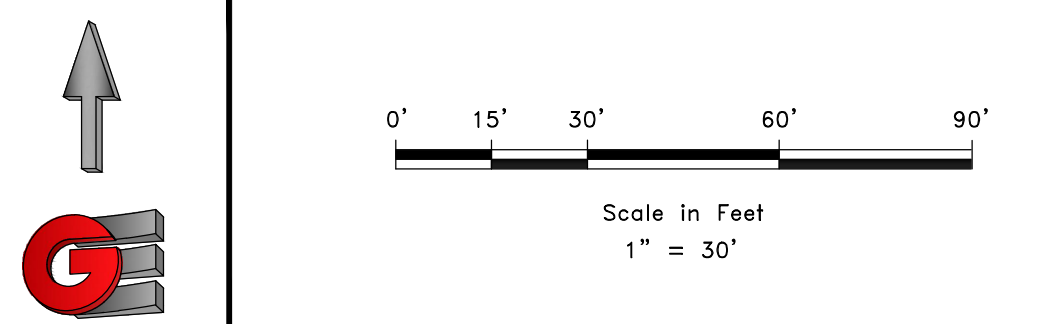


UTILITY PLAN
 WEST FIELD SR SEMINARY
 2200 S 4350 W
 TAYLOR, WEBER, UTAH

GARDNER ENGINEERING
 CIVIL - LAND PLANNING
 MUNICIPAL - LAND SURVEYING
 5150 SOUTH 375 EAST OGDEN, UT
 OFFICE: 801-476-0202 FAX: 801-476-0066

CE3-01

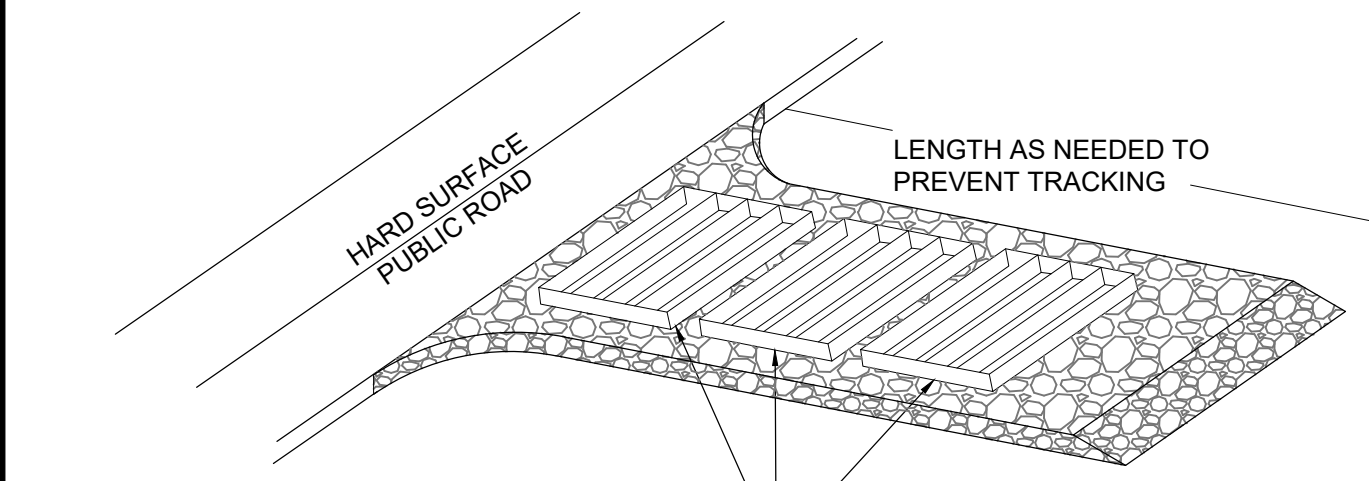
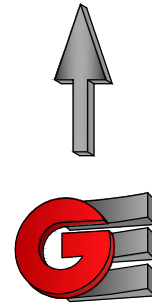
SCALE: 1" = 30'
 DATE: 10/18/2022
 DESIGN: W.J.S.
 DRAWN: J.K.H./W.S.
 CHECKED: T.M.N.
 DWG.



R:\0204 - BOTT PANTONE\2202 - WEST FIELD HIGH SEMINARY\DESIGN\DWG\WEST FIELD HIGH SEMINARY BUILDING.DWG

EROSION CONTROL NOTES:

- SANDBAGS WILL BE PLACED AT DISCHARGE LOCATIONS TO CONTAIN AND DIVERT STORM WATER THROUGH THE INLET PROTECTION.
- AN EARTHEN BERM 6" HIGH WILL BE CONSTRUCTED TO CONTAIN THE STORM WATER AND DIVERT IT TO DISCHARGE AREAS.
- STORM WATER WILL BE DISCHARGED INTO AN EXISTING DRAINAGE SYSTEM. EXISTING LINES SHALL BE INSPECTED PRIOR TO CERTIFICATE OF OCCUPANCY AND CLEANED IF NECESSARY.
- THE STORM WATER POLLUTION PREVENTION PLAN SHALL CONFORM TO ALL STATE DIVISION OF ENVIRONMENTAL PROTECTION REGULATIONS.



A SERIES OF STEEL PLATES (3 OR MORE) WITH RUMBLE STRIPS OR MIN. 3" COARSE AGGREGATE.

ENTRANCE STABILIZATION NOTES:

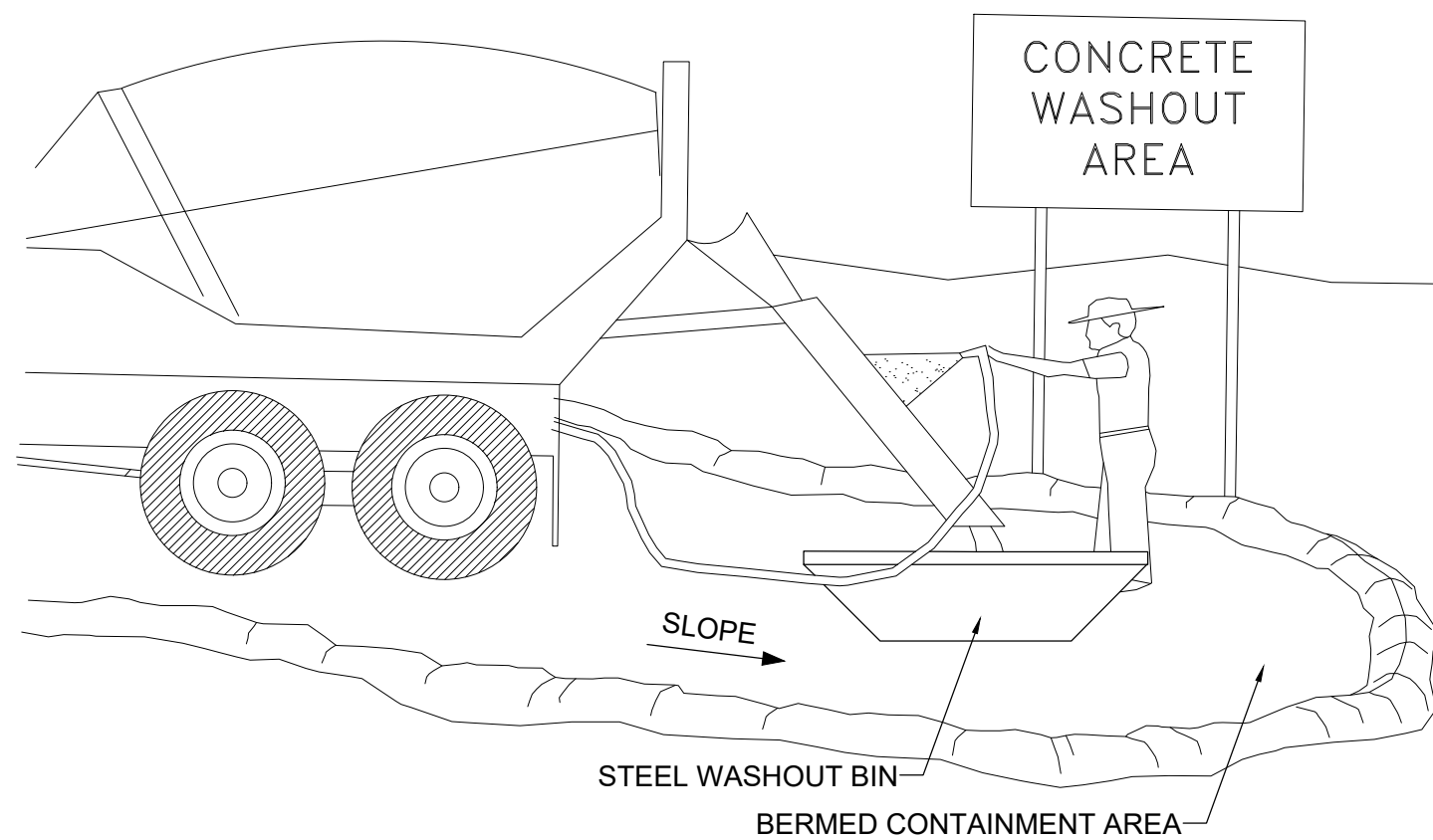
- SEDIMENTS AND OTHER MATERIALS SHALL NOT BE TRACKED FROM THE SITE BY VEHICLE TRAFFIC. THE CONSTRUCTION ENTRANCE ROADWAYS SHALL BE STABILIZED SO AS TO PREVENT SEDIMENTS FROM BEING DEPOSITED INTO THE STORM DRAIN SYSTEMS. DEPOSITIONS MUST BE SWEEPED UP IMMEDIATELY AND MAY NOT BE WASHED DOWN BY RAIN OR OTHER MEANS INTO THE STORM DRAIN SYSTEM.
- STABILIZED CONSTRUCTION ENTRANCE SHALL BE:
 - LOCATED AT ANY POINT WHERE TRAFFIC WILL BE ENTERING OR LEAVING A CONSTRUCTION SITE TO OR FROM A PUBLIC RIGHT-OF-WAY, STREET, ALLEY AND SIDEWALK OR PARKING AREA.
 - A SERIES OF STEEL PLATES WITH "RUMBLE STRIPS", AND/OR MIN. 3" COARSE AGGREGATE WITH LENGTH, WIDTH AND THICKNESS AS NEEDED TO ADEQUATELY PREVENT ANY TRACKING ONTO PAVED SURFACES.
- ADDING A WASH RACK WITH A SEDIMENT TRAP LARGE ENOUGH TO COLLECT ALL WASH WATER CAN GREATLY IMPROVE EFFICIENCY.
- ALL VEHICLES ACCESSING THE CONSTRUCTION SITE SHALL UTILIZE THE STABILIZED CONSTRUCTION ENTRANCE SITES.

STREET MAINTENANCE NOTES:

- REMOVE ALL SEDIMENT DEPOSITED ON PAVED ROADWAYS IMMEDIATELY.
- SWEEP PAVED AREAS THAT RECEIVE CONSTRUCTION TRAFFIC WHENEVER SEDIMENT BECOMES VISIBLE.
- PAVEMENT WASHING WITH WATER IS PROHIBITED IF IT RESULTS IN A DISCHARGE TO THE STORM DRAIN SYSTEM.

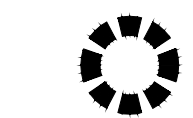
NOTE:

CONTRACTOR SHALL COMPLETE AND SUBMIT A STATE NOTICE OF INTENT (NOI) AND A STORM WATER POLLUTION PREVENTION PLAN BOOKLET



NOTES:

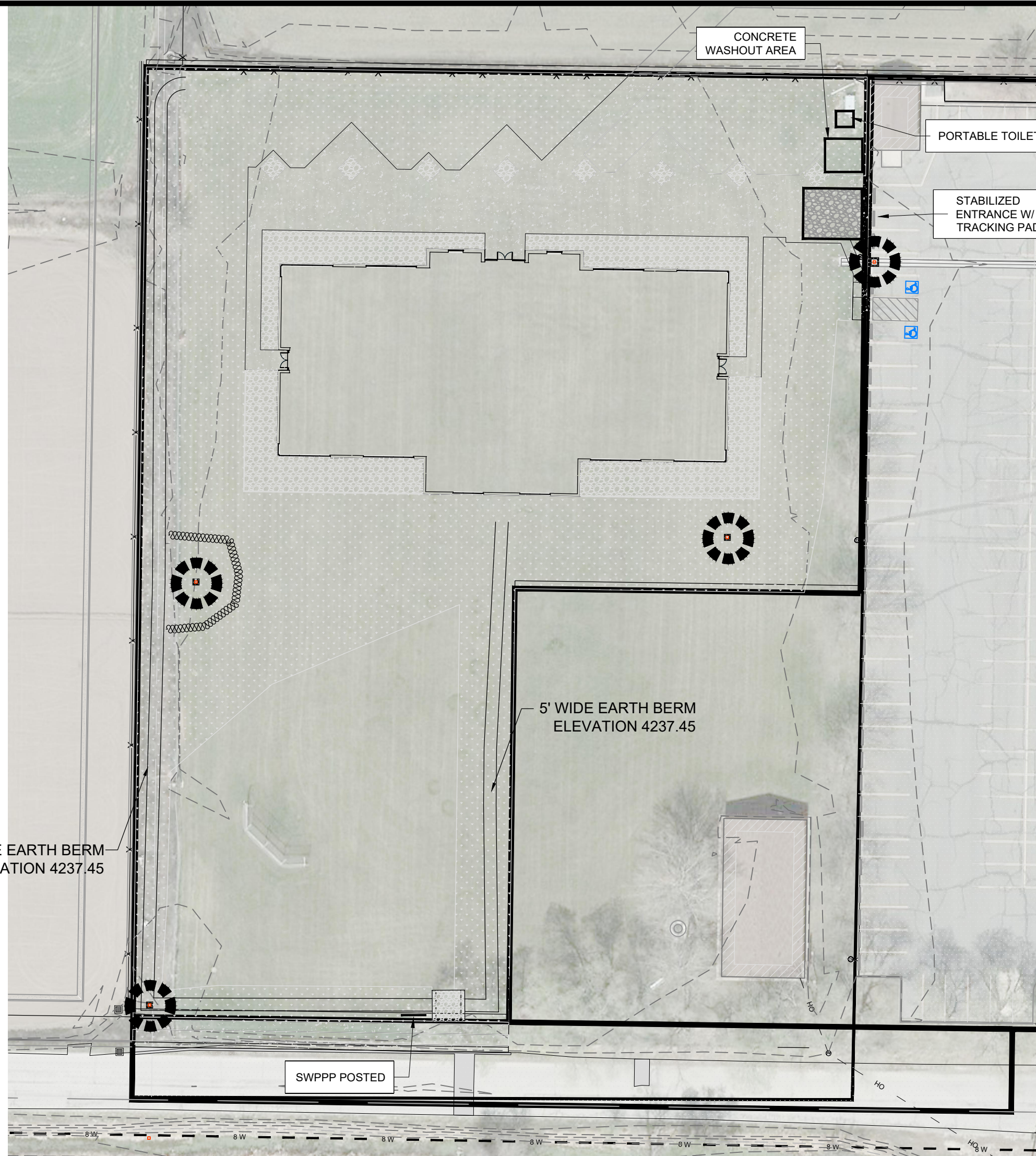
- EXCESS AND WASTE CONCRETE SHALL BE DISPOSED OF OFF SITE OR AT DESIGNATED AREAS ONLY.
- EXCESS AND WASTE CONCRETE SHALL NOT BE WASHED INTO THE STREET OR INTO A DRAINAGE SYSTEM.
- FOR WASHOUT OF CONCRETE AND MORTAR PRODUCTS ONSITE, A DESIGNATED CONTAINMENT FACILITY OF SUFFICIENT CAPACITY TO RETAIN LIQUID AND SOLID WASTE SHALL BE PROVIDED.
- ONSITE CONCRETE WASHOUT CONTAINMENT FACILITY SHALL BE A STEEL BIN OR APPROVED ALTERNATE.
- SLURRY FROM CONCRETE AND ASPHALT SAW CUTTING SHALL BE VACUUMED OR CONTAINED, DRIED, PICKED UP AND DISPOSED OF PROPERLY.



INLET PROTECTION (EITHER OPTION)



SILT FENCE



**West Field Sr Seminary
4700 West 2350 South
Taylor, Weber County, Utah**



Improved Areas	Total Site		
	Sq. Ft.	Acre	C
Sidewalk	6,795	0.1560	0.85
Gravel or Mulch	5,781	0.1327	0.50
Landscape	31,184	0.7159	0.10
Detention Pond	26,474	0.6078	0.10
Building	15,000	0.3444	0.85
Total/Weighted	85,234	1.9567	0.32
Undetained Area	0	0.00	0.32

Allow Release Rate (cfs/acre) cfs/acre

Q Allowable (cfs)

0.00 cfs

Total Allowed Release cfs

Effective Release Rate per Acre 0.10 cfs/Acre

100 YEAR STORM RECOMMENDED MIN. VOLUME DETAINED	FEET	YARDS
	3,115	115

100 yr	Runoff Vol (cf)	Inch / Hr	Total Vol (cf)	Detain Vol (cf)
MIN	Allowable	i100	100 YEAR	Difference
5	59	6.5	1,217	1,158
10	117	4.95	1,853	1,736
15	176	4.09	2,297	2,121
30	352	2.75	3,089	2,737
60	704	1.7	3,819	3,115
120	1,409	0.928	4,169	2,761
180	2,113	0.633	4,266	2,153
360	4,226	0.353	4,758	532
720	5,796	0.215	5,796	0
1440	6,416	0.119	6,416	0

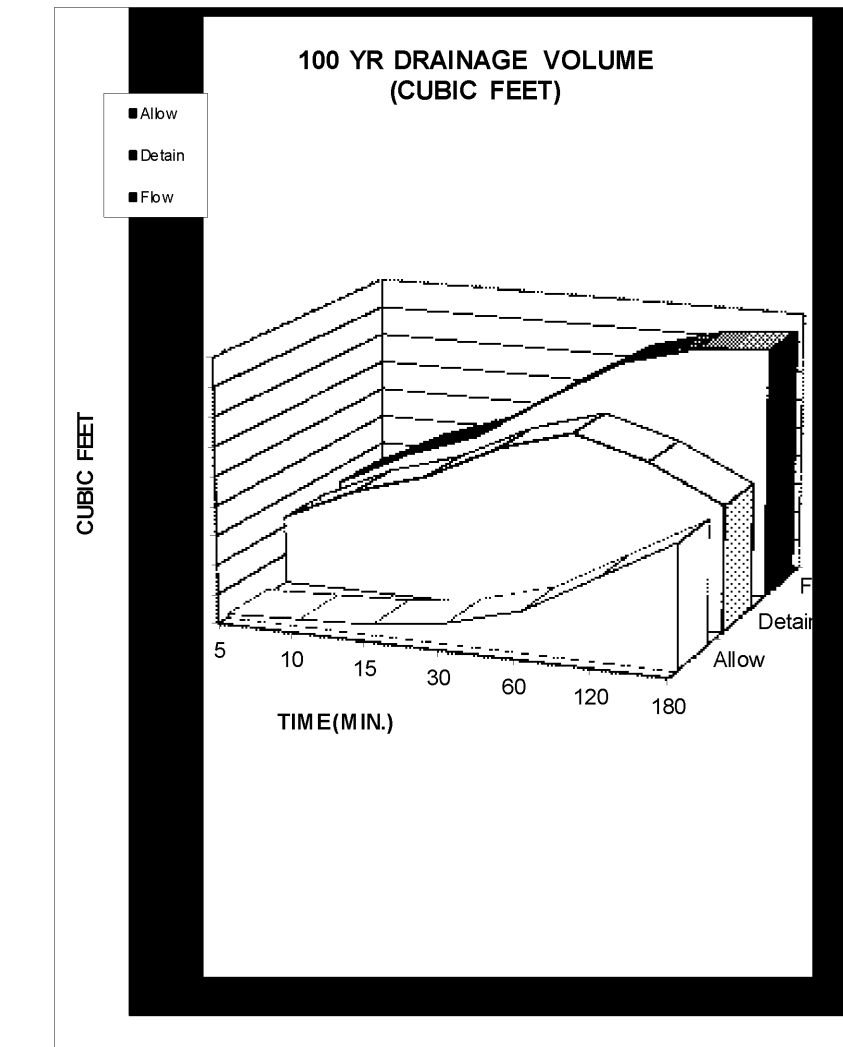
NOAA - Atlas 14

Orifice Calculation

H = Maximum water height (ft)
 Q = 0.20 Flowrate out of orifice (cfs)
 Cc = 0.62 Coefficient of Contraction
 Cv = 0.98 Coefficient of Velocity
 Area = 0.021 Orifice Area (ft²)
 H = 3.14
 g = 32.17 Gravitational Constant
 d = 1.96 Orifice Diameter (in)
 d = Orifice

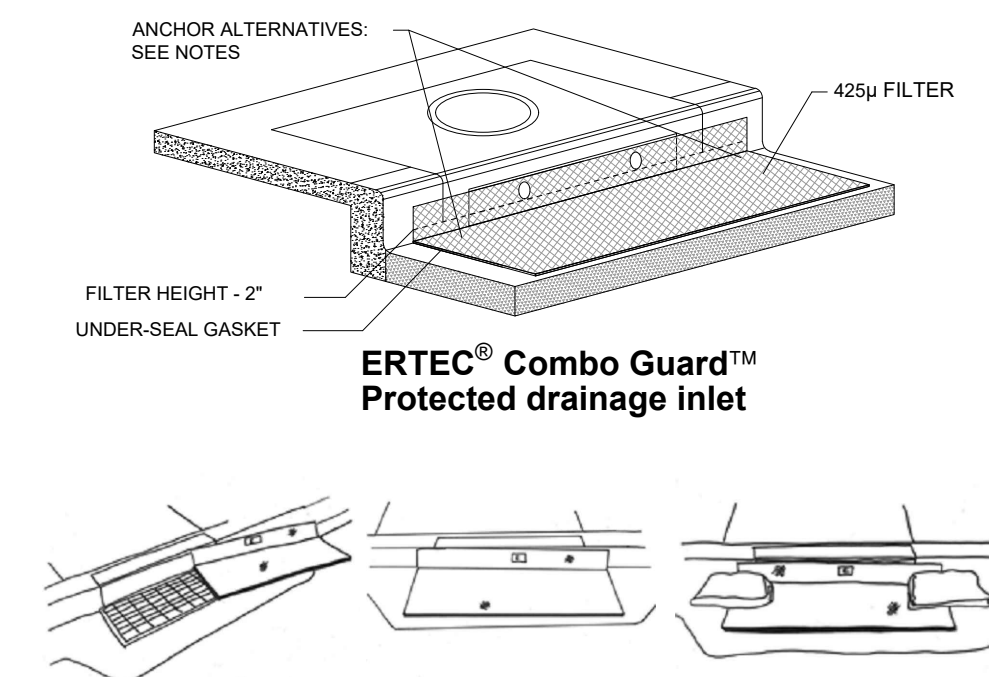
Upsize to 3" Orifice to Prevent Clogging

Detention Pond Available Volume
15,514 CF



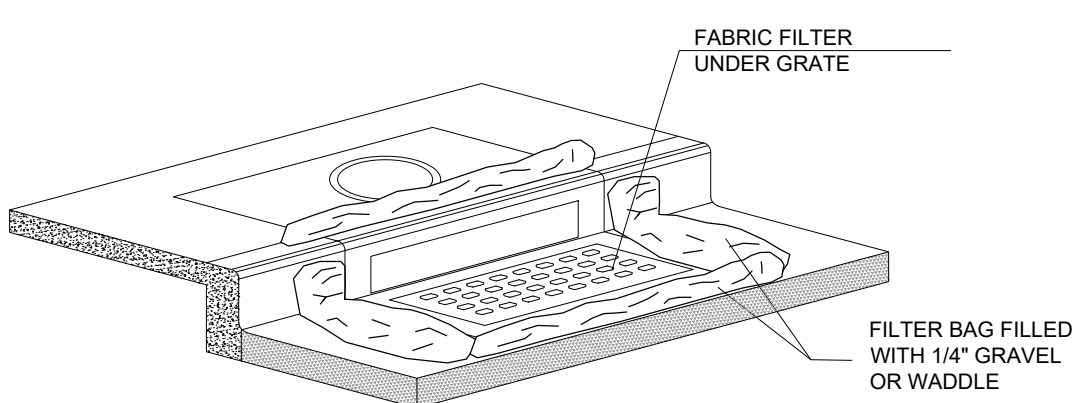
INSTALLATION NOTES

- PLACEMENT: PLACE CG TIGHTLY AGAINST CURB OPENING AND COVER ENTIRE GRATE. CG SHOULD EXTEND AT LEAST 2 INCHES PAST GRATE TOWARDS STREET.
- OVERLAP FOR LONG OPENINGS: OVERLAP CG UNITS AT LONGER OPENINGS.
- ANCHOR: ANCHOR CG SO THAT WATER CANNOT FLOW BEHIND IT.
- ALTERNATE ANCHOR METHODS: A) INSTALL GRAVEL BAGS AT EACH SIDE OF CG - HALF-ON AND HALF-OFF THE EDGES. USE HALF-FILLED GRAVEL BAGS (15 OR 20 LBS). ROUND ROCK IS RECOMMENDED. OR B) ATTACH WITH 16 GAUGE TIE-WIRE. CUT WIRE TO 18" LENGTH. AT EACH CORNER OF CG, FEED ONE END OF WIRE DOWN THROUGH CG, AROUND GRATE BAR, AND BACK UP THRU CG. ABOVE GROUND, TWIST WIRES SEVERAL TIMES. CUT-OFF EXCESS. OR C) FASTEN WITH CONCRETE ANCHORS/NAILS AT THE OUTSIDE EDGES OF CG.



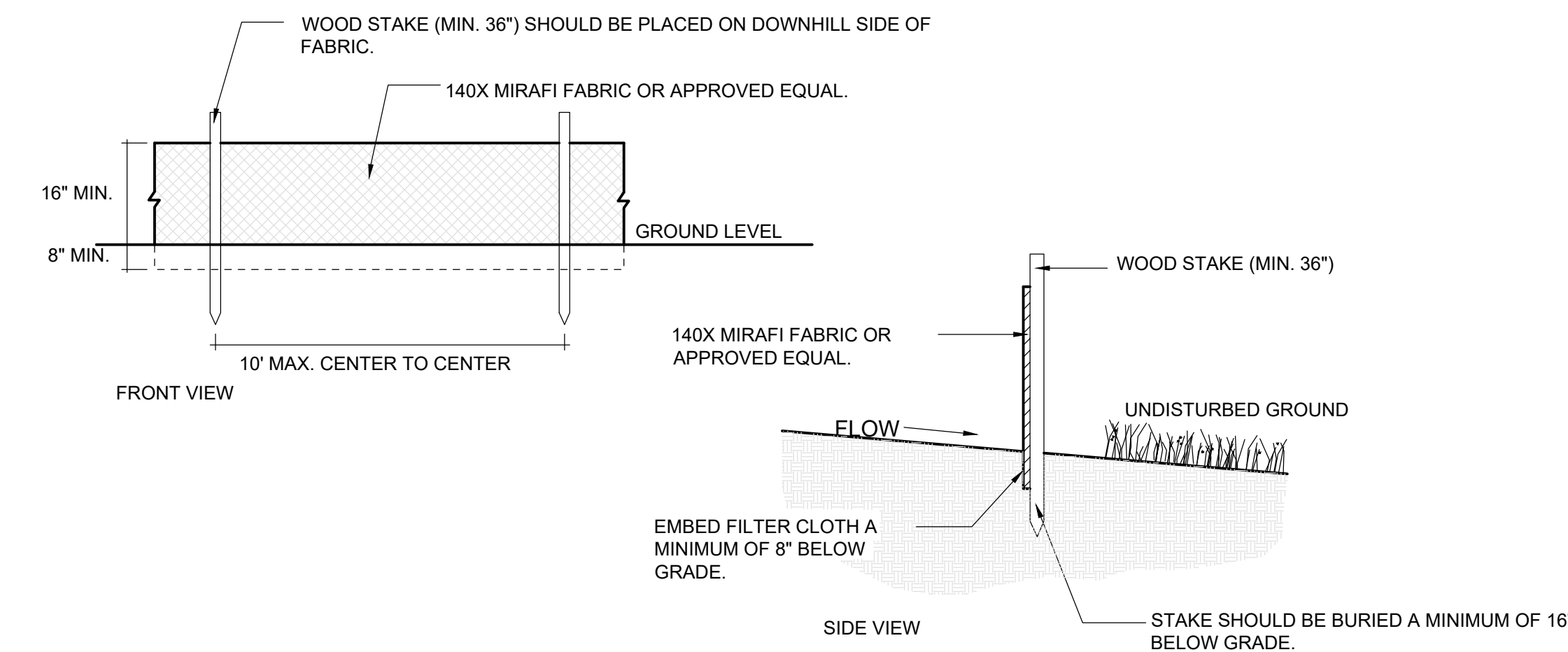
1A INLET PROTECTION - OPTION 1

Scale: NTS



1B INLET PROTECTION - OPTION 2

Scale: NTS

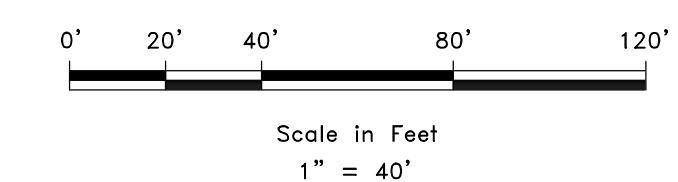


2 SILT FENCE

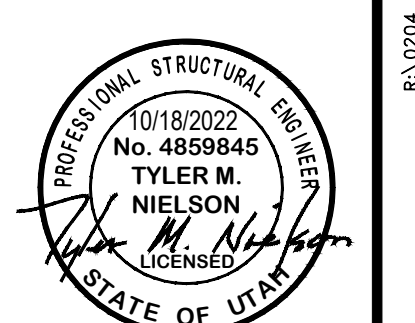
Scale: NTS

DEVELOPER:

THE CHURCH OF JESUS CHRIST OF LATTER-DAY SAINTS
 UTAH NORTH PM OFFICE
 ATTN: BRIAN CHILDS
 435 NORTH WALL AVE, STE D
 OGDEN, UT 84404
 801-450-3475



REVISIONS	DESCRIPTION
DATE	



SWPPP
 WEST FIELD SR SEMINARY
 2200 S 4350 W
 TAYLOR, WEBER, UTAH



CE4-01