

- | | |
|----|--|
| A. | Re: Exterior Materials Legend for exterior materials and finishes. |
| B. | Contractor shall leave a 3/4" gap between all dissimilar materials - typ. Gap shall be filled with backer rod and sealant. Coordinate sealant color with Architect. |
| C. | All exposed exterior steel shall be painted (i.e. lintels, columns, beams, etc.). |
| D. | Contractor shall paint all vent pipes, exhaust fans, and other roof top equipment and penetrations that are visible from the ground plane. |
| E. | Re: electrical drawings for exterior power supply locations, lighting, horn strobes, card readers, etc. Contractor shall paint all electrical panels and other electrical equipment - coordinate paint color with Architect. |
| F. | Re: plumbing drawings for downspout nozzle, hose bib and FDC connection locations. |

GENERAL EXTERIOR ENVELOPE NOTES:

- A. Pre Construction Conference: Prior to the start of submittals, an Envelope Pre-Construction Conference is to be conducted to review installation methods and material compatibility with all associated envelope Contractors. Work on the specification sections dealing with the envelope are to include, but not be limited to, the following: 072100 - Weather Barriers, 072210 - Nailbase Roof Insulation Panels, 072726 - Fluid Applied Membrane Air Barriers, 072710 - Continuous Thermal Insulation, 075422 - Thermoplastic Polyolefin (TPO) Roofing, 084413 - Glazed Aluminum Curtain Walls.
- B. Provide ICC E-List evaluation reports for all material installations.
- C. Provide a list of material compatibility for other envelope system materials.
- D. The installed air barrier on the building is required to be continuous. Seal all penetrations, joints and flashings as required by material manufacturer's instructions.
- E. Contractor is responsible for all envelope work regardless of the location of the information in the construction documents.
- F. Install sealant at exterior side of all joints, seams, connections or openings which would allow water or air infiltration except as noted otherwise. Sealant color shall match adjacent surfaces. Color shall be approved by Architect.
- G. The Contractor is responsible for producing a weather-tight building, details and omissions to drawings notwithstanding. All drawings and specifications shall be subject to a weather-tight building check by the Architect.
- H. The drawings and specifications do not necessarily indicate or describe all work required for the full performance and completion of the work. It is intended that the work shall be of sound and quality construction and the Contractor shall be solely responsible for the inclusion of adequate amounts to cover installation of all items indicated, described or reasonably implied.
- I. Exterior fenestration calculations: $\sum f.s.i.$ total fenestration surface area $\div \sum f.s.i.$ total exterior surface area = 79%.

EXTERIOR MATERIALS LEGEND:

ID	MATERIAL	MANUFACTURER	COLOR/NOTES
MASONRY			
M01	Honed Face CMU	Sunroc	Color: Natural
M02	Split Face CMU	Sunroc	Color: Natural
METAL			
MTL01	Prefinished Metal	-	Color: Match Metal Siding Panel (S01)
MTL02	Aluminum Storefront/Sunshades	Kawneer	Color: Clear Anodized Aluminum
SIDING			
S01	Prefinished Ribbed Metal Siding Panel	MBCI	7.2 panel; Color: Silver Metallic

KEYED NOTES:

A $1/8" = 1'-0"$



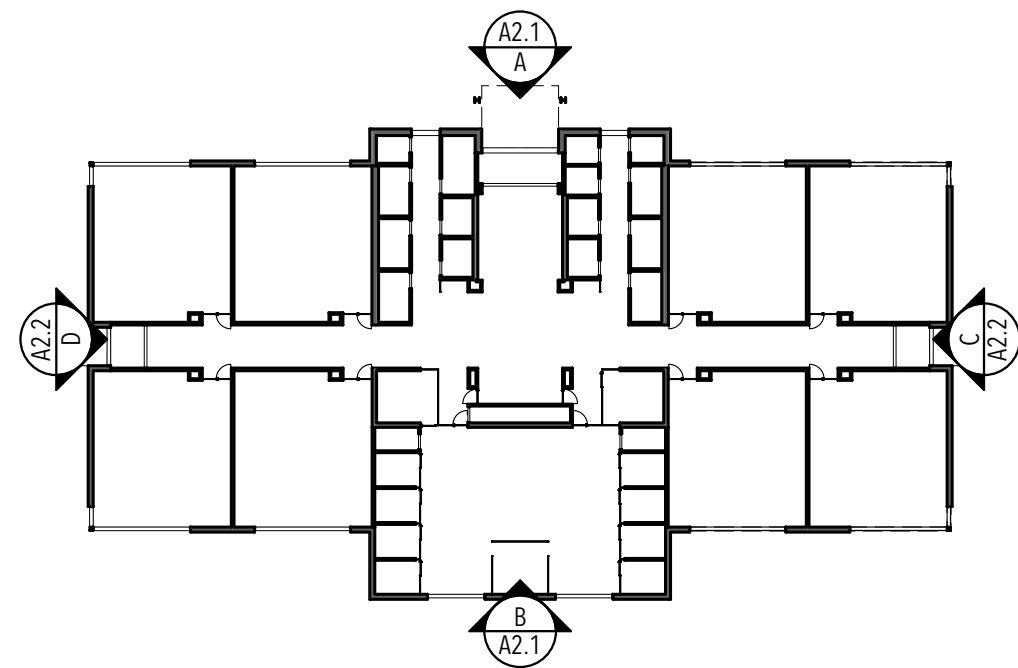
333 24TH STREET
OGDEN, UT 84401
801.394.3033

2200 S STREET, TAYLOR, UT

NOT FOR CONSTRUCTION

[illegible]

25% CD
DATE: 10.10.22
PROJECT NUMBER: 2154

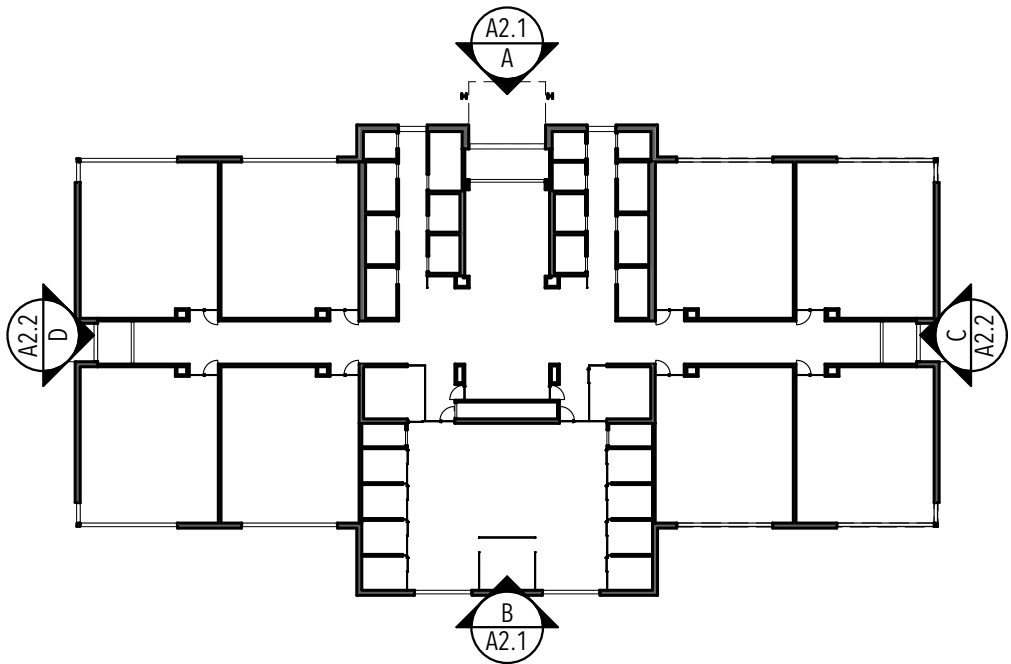


- GENERAL EXTERIOR ELEVATION NOTES:
- A. Re: Exterior Materials Legend for exterior materials and finishes.
 - B. Contractor shall leave a 3/4" gap between all dissimilar materials - typ. Gap shall be filled with backer rod and sealant. Coordinate sealant color with Architect.
 - C. All exposed exterior steel shall be painted (i.e. lintels, columns, beams, etc.).
 - D. Contractor shall paint all vent pipes, exhaust fans, and other roof top equipment and penetrations that are visible from the ground plane.
 - E. Re: electrical drawings for exterior power supply locations, lighting, horn strobes, card readers, etc. Contractor shall paint all electrical panels and other electrical equipment - coordinate paint color with Architect.
 - F. Re: plumbing drawings for downspout nozzle, hose bib and FDC connection locations.

- GENERAL EXTERIOR ENVELOPE NOTES:
- A. Pre-Construction Conference: Prior to the start of submittals, an Envelope Pre-Construction Conference is to be conducted to review installation methods and material compatability with all associated envelope contractors. Work on the specification sections dealing with the envelope are to include, but not be limited to, the following: 072500 - Weather Barriers, 072210 - Nailbase Roof Insulation Panels, 072726 - Fluid Applied Membrane Air Barriers, 072101 - Continuous Thermal Insulation, 075423 - Thermoplastic Polyolefin (TPO) Roofing, 084413 - Glazed Aluminum Curtain Walls.
 - B. Provide ICC-ES evaluation reports for all material installations.
 - C. Provide a letter of material compatibility to other envelope system materials.
 - D. The installed air barrier on the building is required to be continuous. Seal all penetrations, joints and flashings as required by material manufacturer's instructions.
 - E. Contractor is responsible for all envelope work regardless of the location of the information in the construction documents.
 - F. Install sealant at exterior side of all joints, seams, connections or openings which would allow water or air infiltration except as noted otherwise. Sealant color shall match adjacent surfaces. Color shall be approved by Architect.
 - G. The Contractor is responsible for producing a weather-tight building, details and omissions to drawings notwithstanding. All drawing conflicts which may not allow a weather-tight condition shall be brought to the attention of the Architect.
 - H. The drawings and specifications do not necessarily indicate or describe all work required for the full performance and completion of the work. It is intended that the work shall be of sound and quality construction and the Contractor shall be solely responsible for the inclusion of adequate amounts to cover installation of all items indicated, described or reasonably implied.
 - I. Exterior fenestration calculations: ?? s.f. total fenestration surface area / ?? s.f. total exterior surface area = ??%.

EXTERIOR MATERIALS LEGEND:			
ID	MATERIAL	MANUFACTURER	COLOR/NOTES
MASONRY			
M01	Honed Face CMU	Sunroc	Color: Natural
M02	Split Face CMU	Sunroc	Color: Natural
METAL			
MTL01	Prefinished Metal	-	Color: Match Metal Siding Panel (S01)
MTL02	Aluminum Storefront/Sunshades	Kawneer	Color: Clear Anodized Aluminum
SIDING			
S01	Prefinished Ribbed Metal Siding Panel	MBCI	7.2 panel; Color: Silver Metallic

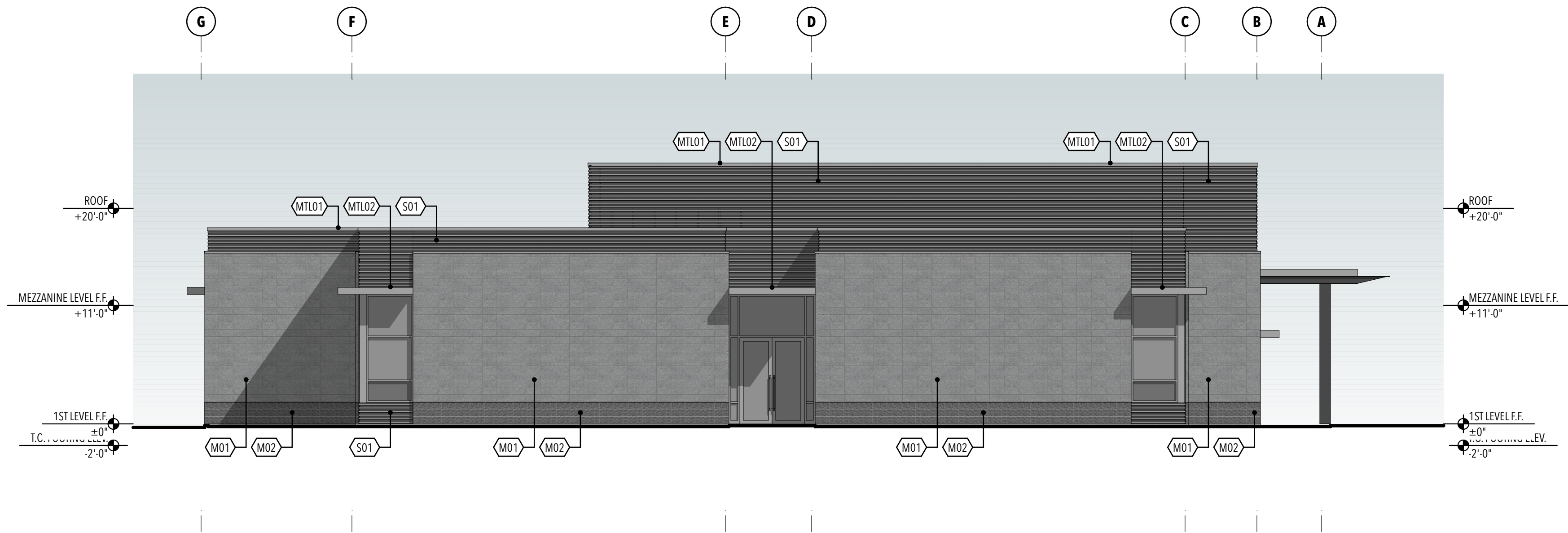
KEYED NOTES:



EAST ELEVATION

C

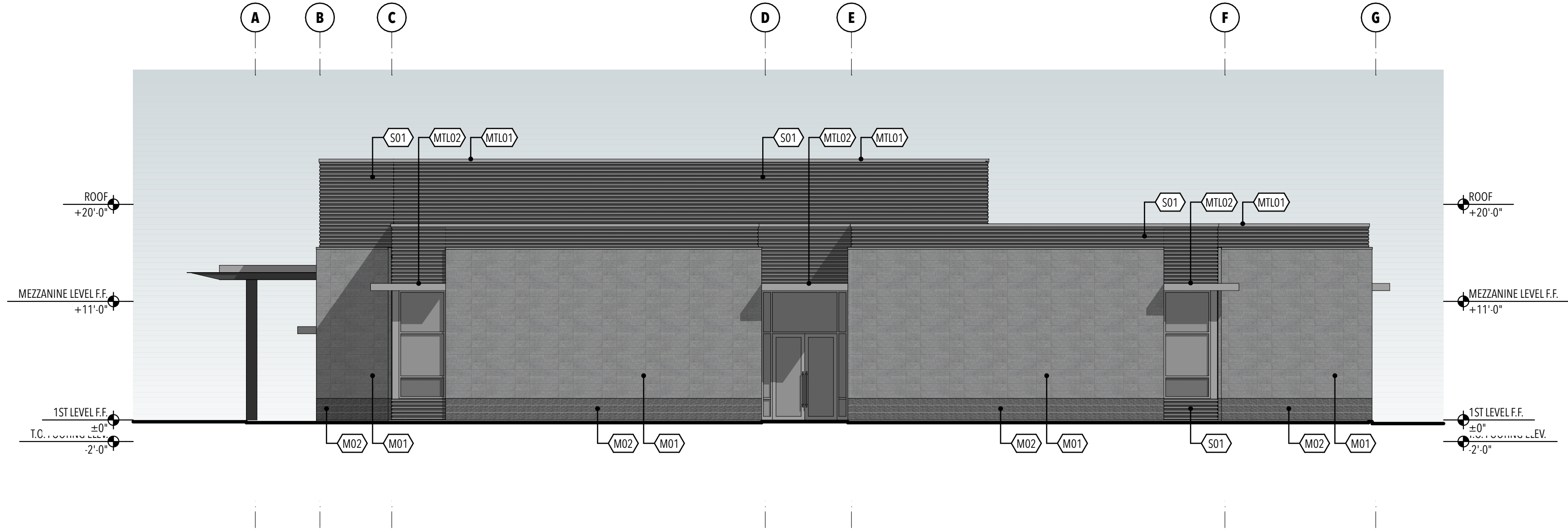
1/8" = 1'-0"



WEST ELEVATION

D

1/8" = 1'-0"



STUDIO 333 ARCHITECTS
333 24TH STREET
OGDEN, UT 84401
801.394.3033

WEST FIELD SR SEMINARY
2200 S STREET, TAYLOR, UT

NOT FOR CONSTRUCTION

NO.	DATE	DESCRIPTION

25% CD
DATE: 10.10.22
PROJECT NUMBER: 2154

