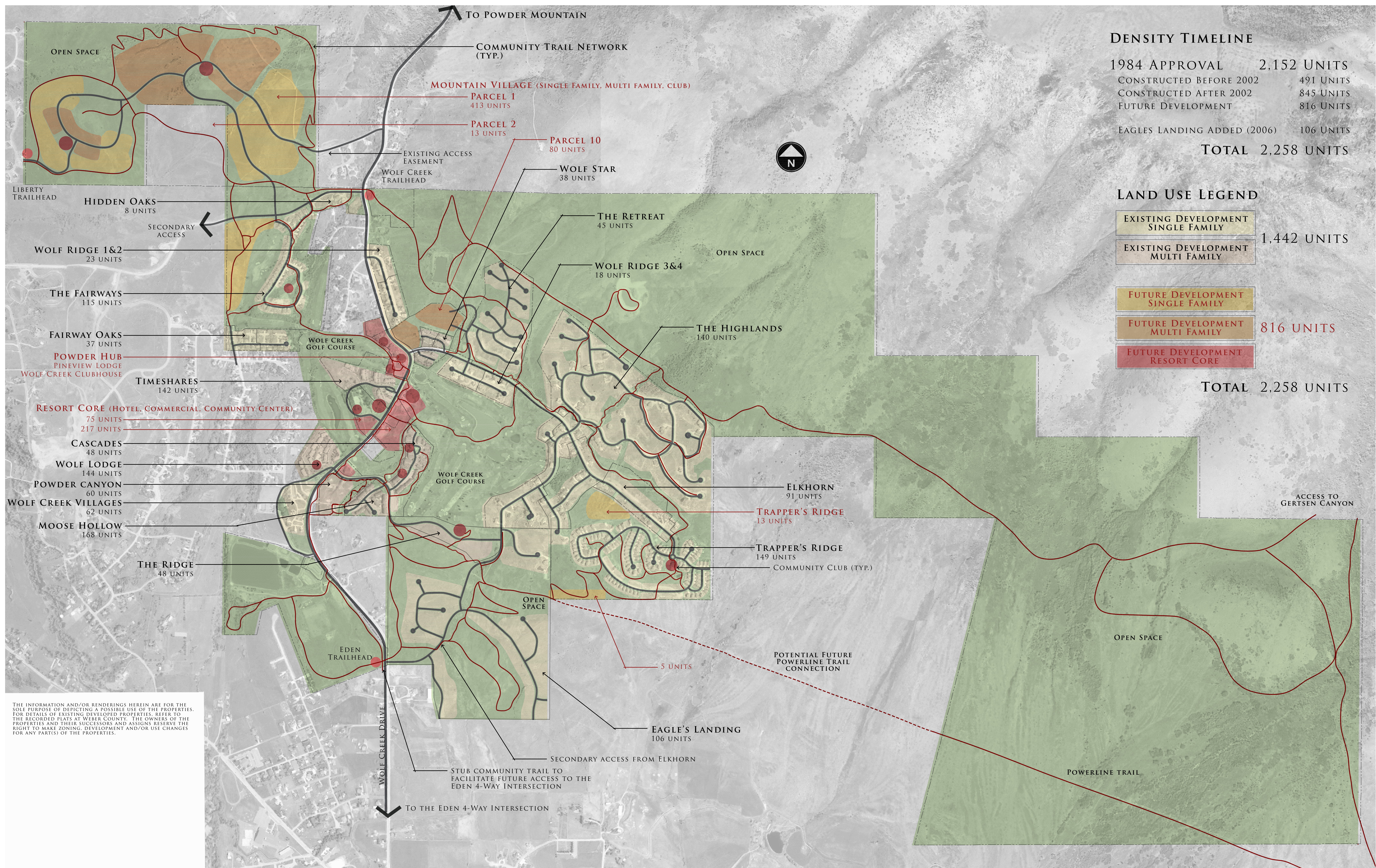
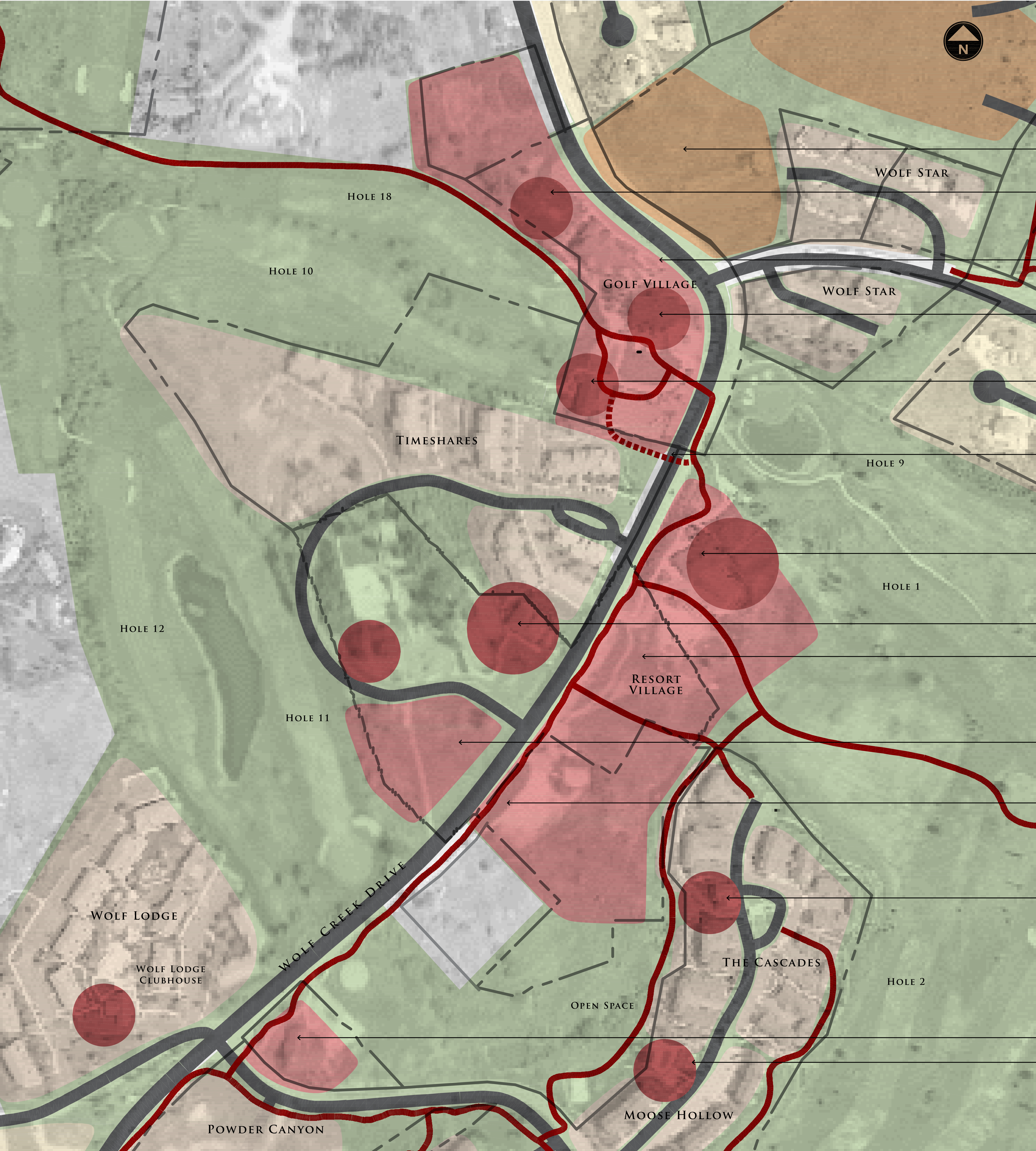


WOLF CREEK RESORT



WOLF CREEK RESORT



LAND USE LEGEND

EXISTING DEVELOPMENT
SINGLE FAMILY

EXISTING DEVELOPMENT
MULTI FAMILY

FUTURE DEVELOPMENT
SINGLE FAMILY

FUTURE DEVELOPMENT
MULTI FAMILY

FUTURE DEVELOPMENT
RESORT CORE

- FUTURE MULTI FAMILY
- WOLF CREEK CLUBHOUSE/POWDER HUB EXPANSION
- EXISTING PINEVIEW LODGE
- EXISTING WOLF CREEK CLUBHOUSE/POWDER HUB AND RESTAURANT
- GOLF CLUB, PRACTICE GREEN, EVENT TENT AND CART STORAGE
- POTENTIAL FUTURE TRAIL UNDERPASS CONNECTING RESORT AND GOLF VILLAGES
- EXISTING RESORT MAINTENANCE FACILITY
- EXISTING WORLDMARK RECREATION FACILITY AND CLUB
- FUTURE COMMUNITY CLUB FACILITY, CONDOMINIUM HOTEL, RETAIL VILLAGE AND RESORT PARKING
- FUTURE RESORT VILLAGE CONDOMINIUM HOTEL OR MULTI FAMILY
- RESORT TRAIL SYSTEM
- THE CASCADES CLUBHOUSE
- EXISTING WELCOME CENTER/VALLEY LODGE
- MOOSE HOLLOW CLUBHOUSE

THE INFORMATION AND/OR RENDERINGS HEREIN ARE FOR THE SOLE PURPOSE OF DEPICTING A POSSIBLE USE OF THE PROPERTIES. FOR DETAILS OF EXISTING DEVELOPED PROPERTIES, REFER TO THE RECORDED PLATS AT WEBER COUNTY. THE OWNERS OF THE PROPERTIES AND THEIR SUCCESSORS AND ASSIGNS RESERVE THE RIGHT TO MAKE ZONING, DEVELOPMENT AND/OR USE CHANGES FOR ANY PART(S) OF THE PROPERTIES.