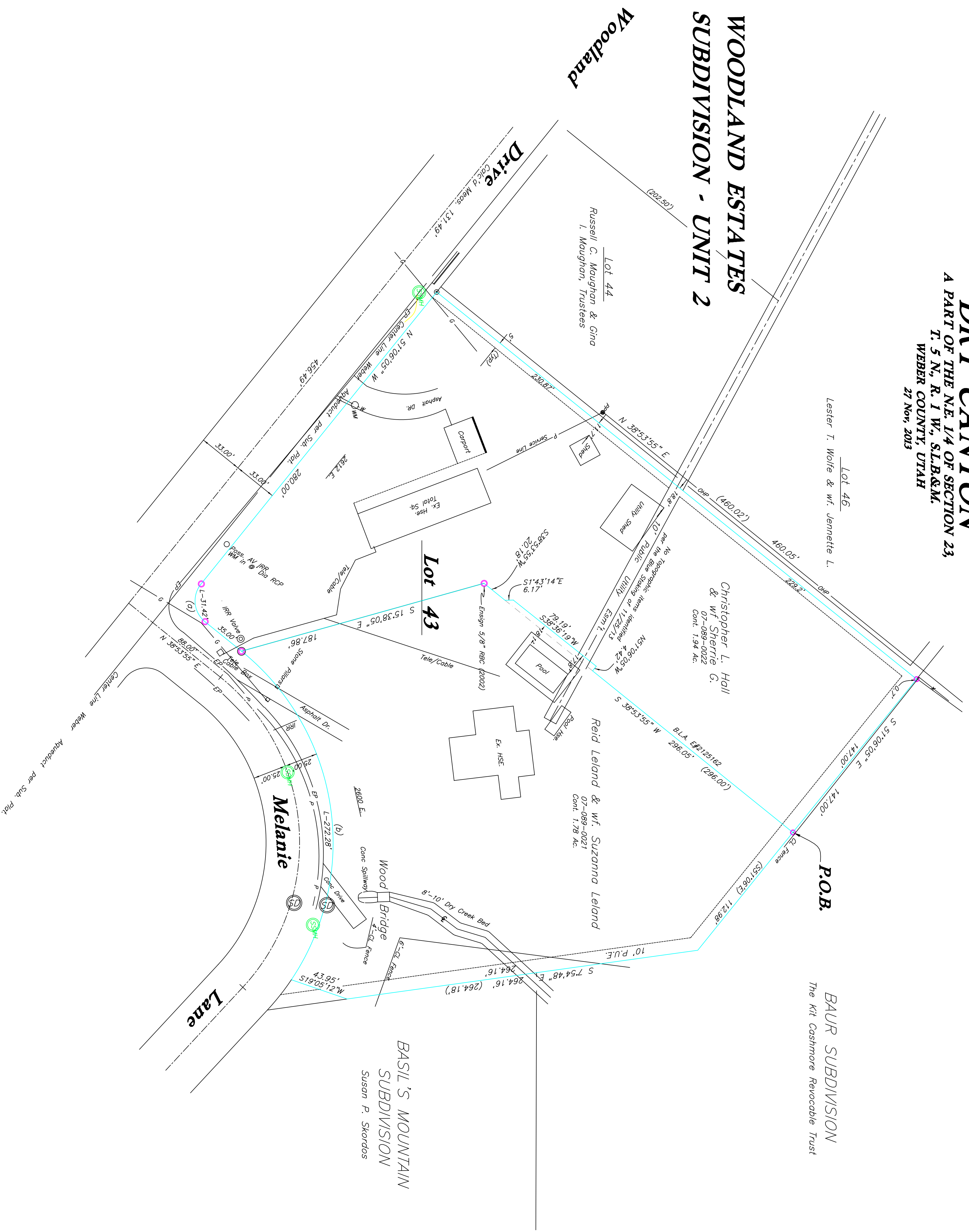


DRY CANYON
 A PART OF THE N.E. 1/4 OF SECTION 23,
 T. 5 N., R. 1 W., S1B&M,
 WEBER COUNTY, UTAH
 27 Nov, 2013



Topographic Survey of the Existing Utilities-Lot 43

CONSTRUCTION & LAND SURVEYORS 870 CANYON ROAD OGDEN, UTAH 84404 PH: (801) 399-4935 FAX: (801) 627-1088		PREPARED BY: SCALE: 40' DRAWN: CJS DATE: 26 Nov, 2013 REVISIONS:	DRWG. NO. PS13-015 HALL LELAND
---	--	--	--------------------------------------