



WEBER-MORGAN HEALTH DEPARTMENT

GARY M. HOUSE, M.P.H.
Health Officer / Director

August 21, 2013

Division Directors
KAY LARRISON, Administration
CLAUDIA PRICE, Nursing & Health Promotion
LOUIS COOPER, Environmental Health
COLLEEN JENSON, WIC

Lynn Wood
2490 Wall Ave.
Ogden, UT 84401

RE: Causey Estates lots 19 and 20

Dear Mr. Wood:

A file search was completed on the above referenced property. Records indicate that the septic system located on lot 19 should not be impacted if the lot line between lot 19 and 20 is moved in accordance with the plat submitted to our office. The soil and percolation tests required to permit a septic system on lot 20 have not been completed however the lot size is sufficient and feasibility can be determined at a later time. Culinary water is available to both lots by Causey Estates, so well protection zones are not required by our office.

The Health Department has no concerns about the proposal to vacate these lots and can sign the new mylar without issue.

If you have any further questions, please contact this office at (801)399-7160 at your convenience.

Sincerely,

Michela Gladwell, LEHS
Environmental Health Division

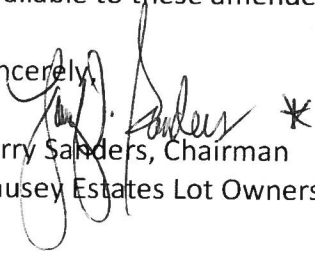
Weber County Planning Department

Re: Causey Estates Lots 19 and 20

Gentlemen,

Our Environmental Committee has approved a recently submitted boundary change proposal to Lots 19 and 20 owned by Lynn and Dana Wood. Accordingly, water connections will be available to these amended lots.

Sincerely,

A handwritten signature in black ink, appearing to read "Larry Sanders", with a small asterisk to the right of the signature.

Larry Sanders, Chairman
Causey Estates Lot Owners' Association

* See ATTACHED SIGNED PLOT MAP

CAUSEY ESTATES SUBDIVISION NO. 1 AMENDMENT 1

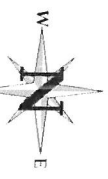
SOUTHEAST QUARTER OF SECTION 14, TOWNSHIP 6 NORTH, RANGE 3 EAST, SALLIATE BASIN AND MERIDIAN
WEBER COUNTY, UTAH
AUGUST 2013

BASIS OF BEARINGS

THE BASIS OF BEARINGS FOR THIS SURVEY WAS ESTABLISHED USING THE 1983 NORTH AMERICAN DATUM FOR THE EARTH. THE BEARINGS OF THE CORNERS OF THE SECTION ARE BEARINGS OF THE CORNERS OF THE COUNTY ESTABLISHED BY THE UTAH DEPARTMENT OF HERITAGE AND ARTS.

LEGEND

- 1. SECTION CORNER
- 2. SECTION CORNER
- 3. SECTION CORNER
- 4. SECTION CORNER
- 5. SECTION CORNER
- 6. SECTION CORNER
- 7. SECTION CORNER
- 8. SECTION CORNER
- 9. SECTION CORNER
- 10. SECTION CORNER
- 11. SECTION CORNER
- 12. SECTION CORNER
- 13. SECTION CORNER
- 14. SECTION CORNER
- 15. SECTION CORNER
- 16. SECTION CORNER
- 17. SECTION CORNER
- 18. SECTION CORNER
- 19. SECTION CORNER
- 20. SECTION CORNER
- 21. SECTION CORNER
- 22. SECTION CORNER
- 23. SECTION CORNER
- 24. SECTION CORNER
- 25. SECTION CORNER
- 26. SECTION CORNER
- 27. SECTION CORNER
- 28. SECTION CORNER
- 29. SECTION CORNER
- 30. SECTION CORNER
- 31. SECTION CORNER
- 32. SECTION CORNER
- 33. SECTION CORNER
- 34. SECTION CORNER
- 35. SECTION CORNER
- 36. SECTION CORNER
- 37. SECTION CORNER
- 38. SECTION CORNER
- 39. SECTION CORNER
- 40. SECTION CORNER
- 41. SECTION CORNER
- 42. SECTION CORNER
- 43. SECTION CORNER
- 44. SECTION CORNER
- 45. SECTION CORNER
- 46. SECTION CORNER
- 47. SECTION CORNER
- 48. SECTION CORNER
- 49. SECTION CORNER
- 50. SECTION CORNER
- 51. SECTION CORNER
- 52. SECTION CORNER
- 53. SECTION CORNER
- 54. SECTION CORNER
- 55. SECTION CORNER
- 56. SECTION CORNER
- 57. SECTION CORNER
- 58. SECTION CORNER
- 59. SECTION CORNER
- 60. SECTION CORNER
- 61. SECTION CORNER
- 62. SECTION CORNER
- 63. SECTION CORNER
- 64. SECTION CORNER
- 65. SECTION CORNER
- 66. SECTION CORNER
- 67. SECTION CORNER
- 68. SECTION CORNER
- 69. SECTION CORNER
- 70. SECTION CORNER
- 71. SECTION CORNER
- 72. SECTION CORNER
- 73. SECTION CORNER
- 74. SECTION CORNER
- 75. SECTION CORNER
- 76. SECTION CORNER
- 77. SECTION CORNER
- 78. SECTION CORNER
- 79. SECTION CORNER
- 80. SECTION CORNER
- 81. SECTION CORNER
- 82. SECTION CORNER
- 83. SECTION CORNER
- 84. SECTION CORNER
- 85. SECTION CORNER
- 86. SECTION CORNER
- 87. SECTION CORNER
- 88. SECTION CORNER
- 89. SECTION CORNER
- 90. SECTION CORNER
- 91. SECTION CORNER
- 92. SECTION CORNER
- 93. SECTION CORNER
- 94. SECTION CORNER
- 95. SECTION CORNER
- 96. SECTION CORNER
- 97. SECTION CORNER
- 98. SECTION CORNER
- 99. SECTION CORNER
- 100. SECTION CORNER



SCALE: 1" = 40'

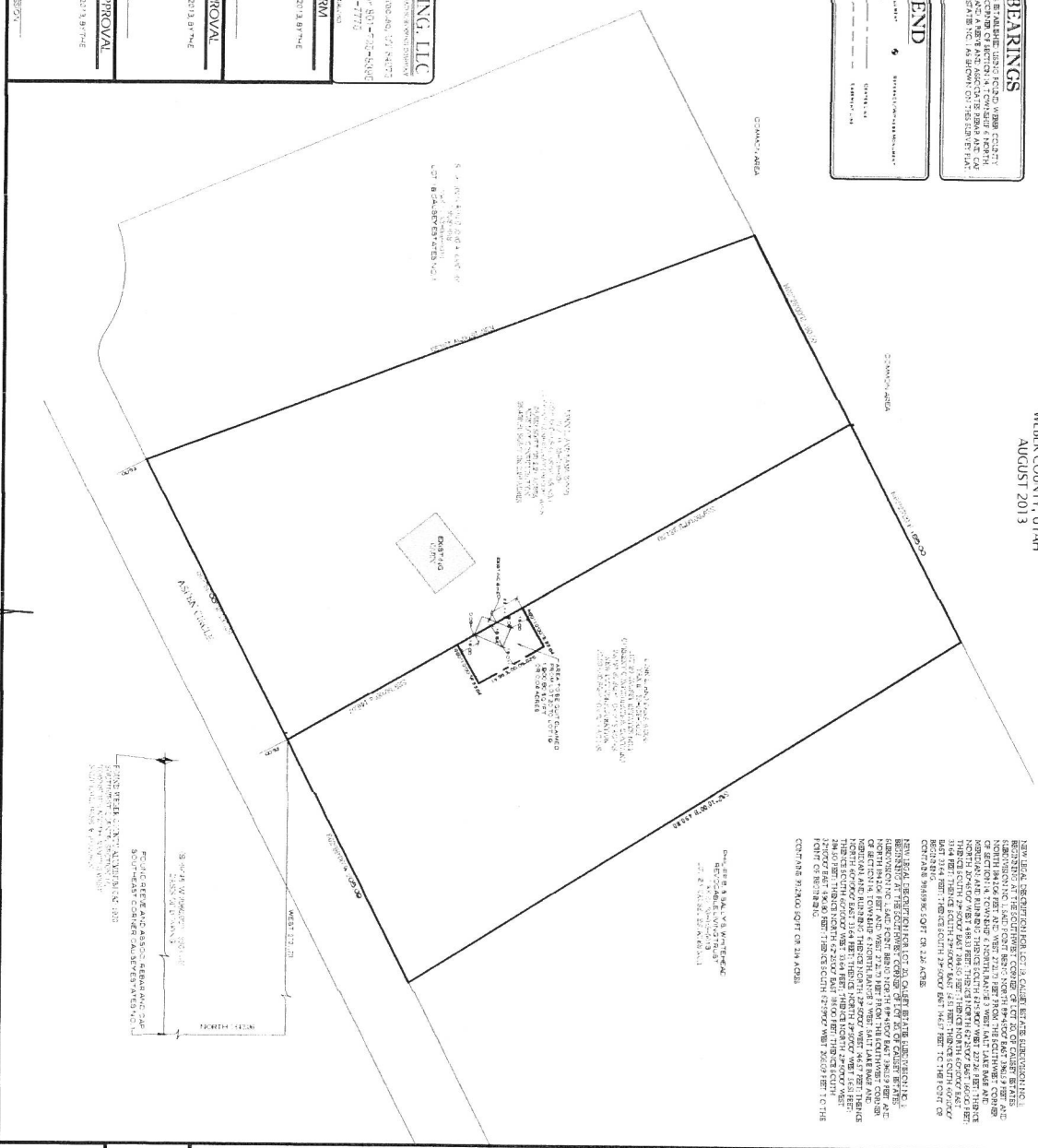
UTAH LAND SURVEYING, LLC
 1000 N. 1000 E. SUITE 100
 PHOENIX, UTAH 84302
 TEL: 801-972-8700 FAX: 801-972-8700
 WWW.UTAHLSURVEYING.COM

APPROVAL AS TO FORM
 APPROVED THIS _____ DAY OF _____ 2013 BY THE
 WEBER COUNTY ENGINEER

COUNTY ENGINEER APPROVAL
 APPROVED THIS _____ DAY OF _____ 2013 BY THE
 WEBER COUNTY ENGINEER

PLANNING COMMISSION APPROVAL
 APPROVED THIS _____ DAY OF _____ 2013 BY THE
 WEBER COUNTY PLANNING COMMISSION

UTAH COUNTY ENGINEER APPROVAL
 APPROVED THIS _____ DAY OF _____ 2013 BY THE
 WEBER COUNTY ENGINEER



OK - [Signature]

THIS DEED, BEING PART OF A QUARTER SECTION SUBDIVISION, BEING PART OF THE SECTION 14, TOWNSHIP 6 NORTH, RANGE 3 EAST, SALLIATE BASIN AND MERIDIAN, WEBER COUNTY, UTAH, WAS FILED FOR RECORD IN THE PUBLIC RECORDS OF SAID COUNTY, UTAH, ON AUGUST 1, 2013, AT 10:00 AM. THE DEED IS BEING FILED FOR RECORD IN THE PUBLIC RECORDS OF SAID COUNTY, UTAH, ON AUGUST 1, 2013, AT 10:00 AM. THE DEED IS BEING FILED FOR RECORD IN THE PUBLIC RECORDS OF SAID COUNTY, UTAH, ON AUGUST 1, 2013, AT 10:00 AM.

SURVEYOR'S CERTIFICATE

CAUSEY ESTATES SUBDIVISION NO. 1 AMENDMENT 1

MICHAEL L. WANGEMANN, PLS. REG. 11158

DATE: AUGUST 1, 2013

UTAH DEPARTMENT OF HERITAGE AND ARTS

OWNER'S DEDICATION

THE UNDERSIGNED, MICHAEL L. WANGEMANN, PLS. REG. 11158, HEREBY DEDICATE TO THE PUBLIC THE RIGHT OF WAY FOR THE CONSTRUCTION AND MAINTENANCE OF THE ROAD SHOWN ON THE ATTACHED MAP, BEING PART OF THE SECTION 14, TOWNSHIP 6 NORTH, RANGE 3 EAST, SALLIATE BASIN AND MERIDIAN, WEBER COUNTY, UTAH.

STATE OF UTAH
 COUNTY OF WEBER

ACKNOWLEDGMENT

STATE OF UTAH }
 COUNTY OF WEBER }
 MICHAEL L. WANGEMANN, PLS. REG. 11158 }
 SURVEYOR }
 I, MICHAEL L. WANGEMANN, PLS. REG. 11158, DO HEREBY CERTIFY THAT THE ABOVE DESCRIBED SURVEY WAS MADE BY ME OR UNDER MY CLOSE PERSONAL SUPERVISION AND THAT I AM A LICENSED SURVEYOR IN THE STATE OF UTAH.

STATE OF UTAH
 COUNTY OF WEBER

ACKNOWLEDGMENT

STATE OF UTAH }
 COUNTY OF WEBER }
 MICHAEL L. WANGEMANN, PLS. REG. 11158 }
 SURVEYOR }
 I, MICHAEL L. WANGEMANN, PLS. REG. 11158, DO HEREBY CERTIFY THAT THE ABOVE DESCRIBED SURVEY WAS MADE BY ME OR UNDER MY CLOSE PERSONAL SUPERVISION AND THAT I AM A LICENSED SURVEYOR IN THE STATE OF UTAH.

CAUSEY ESTATES SUBDIVISION NO. 1 AMENDMENT 1

COUNTY COMMISSION APPROVAL

APPROVED THIS _____ DAY OF _____ 2013 BY THE
 WEBER COUNTY PLANNING COMMISSION