



HOLE 2 - PAR 5

TO MOOSE HOLLOW

EXISTING WOLF CREEK GOLF COURSE

POTENTIAL ROUND ABOUT
ELKRIDGE TRAIL

MOOSE HOLLOW DRIVE

SHARED DRIVEWAY

PROPOSED DUPLEX TOWNHOMES

SHARED DRIVEWAY

OPEN SPACE
2.34 ACRES

510'

250'

PROPOSED DUPLEX TOWNHOMES

HOLE 3 - PAR 4

HOLE 11 - PAR 3

POTENTIAL LANDSCAPE ISLAND AND GOLF CART CROSSING

Wolf Creek

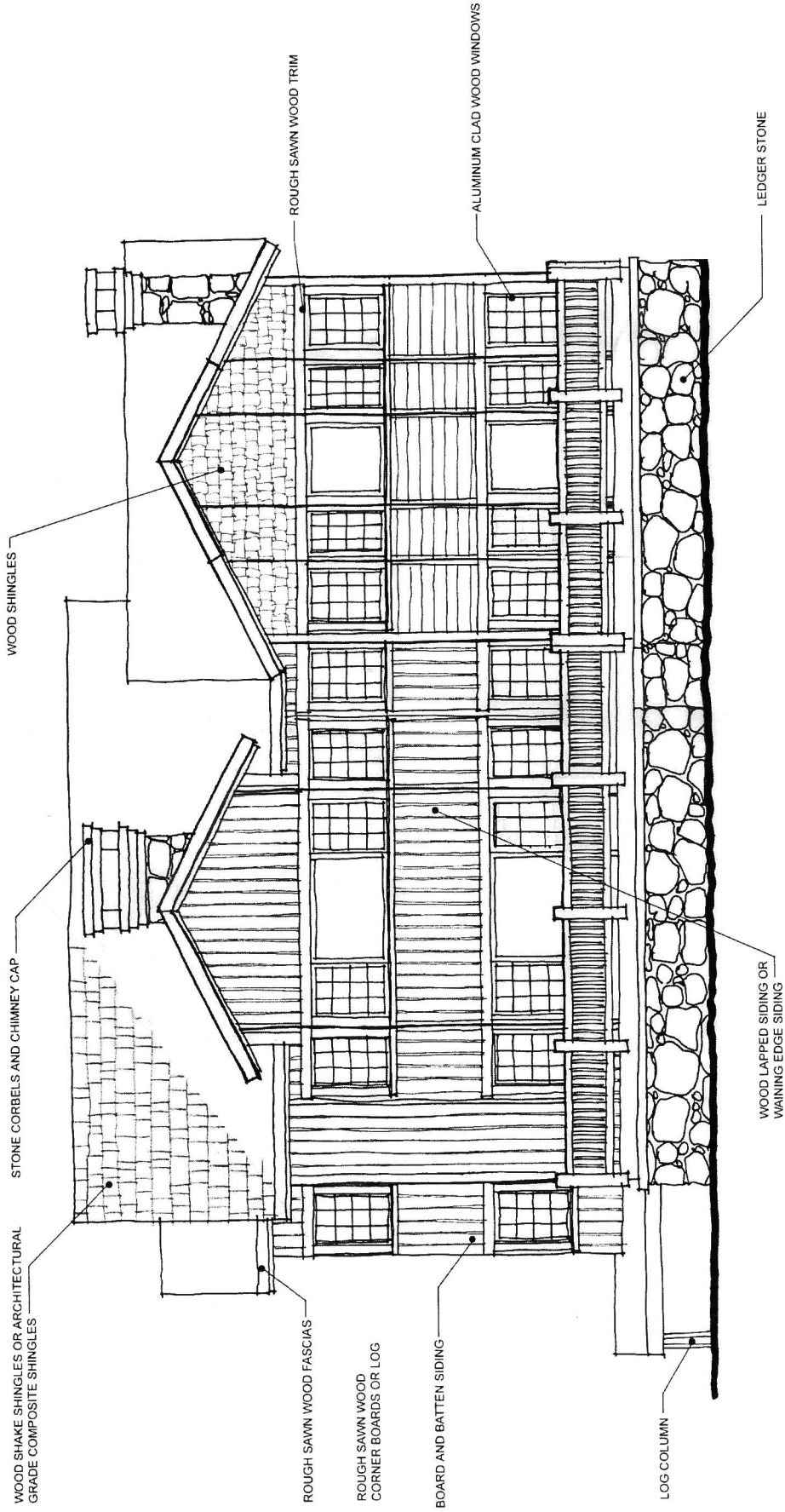
R E S O R T

THE TOWNHOMES @ EAGLES LANDING

48 DUPLEX UNITS
MARCH 10, 2006

Subject to revision pending formalization of developer agreement with Weber County

February 6, 2006

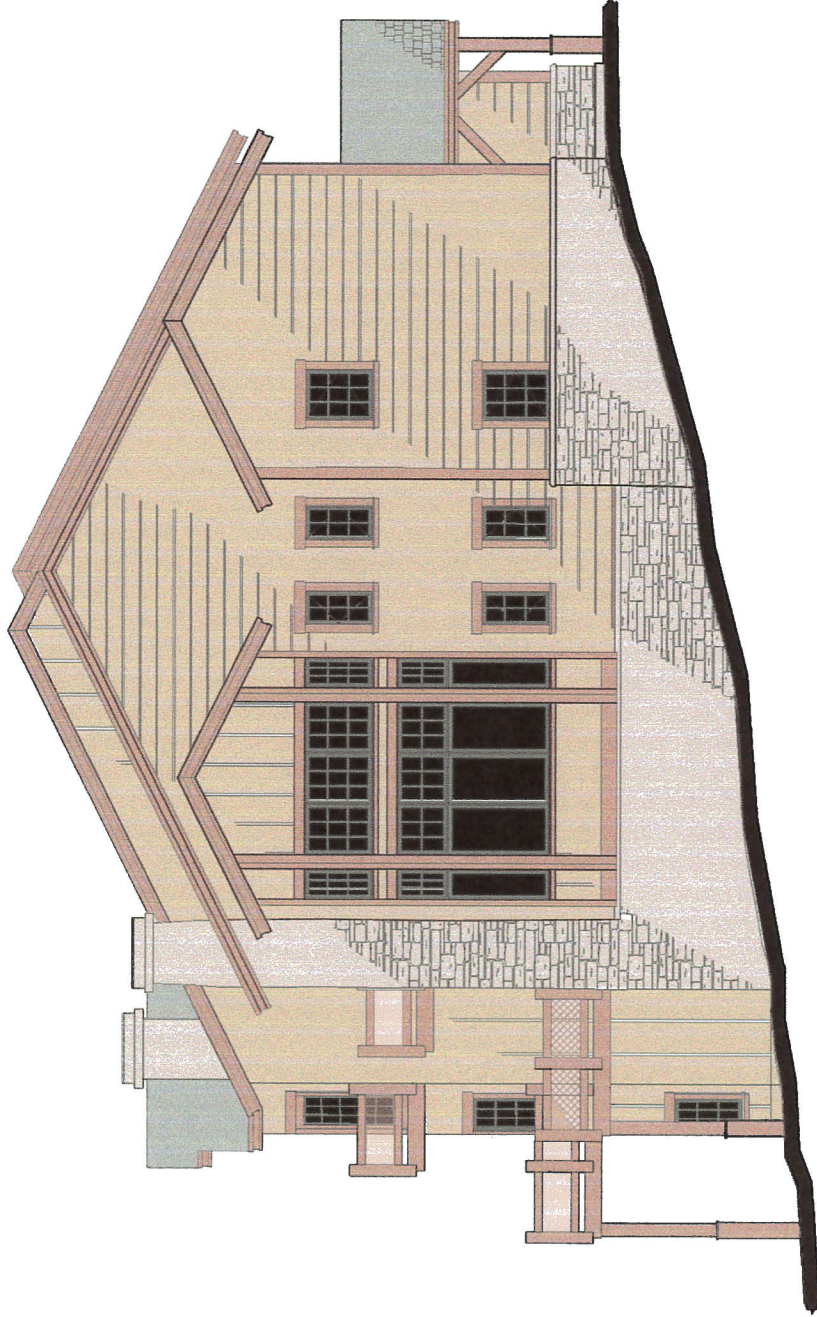
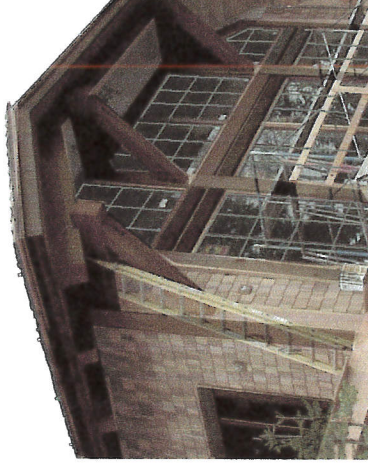


Sun Valley Meadows

Townhouse Elevations

*Wolf
Creek*
RESORT

February 6, 2006



Sun Valley Meadows

Townhouse Elevations

*Wolf
Creek*
RESORT

THE RIDGE TOWNHOMES

WEBER COUNTY, UT

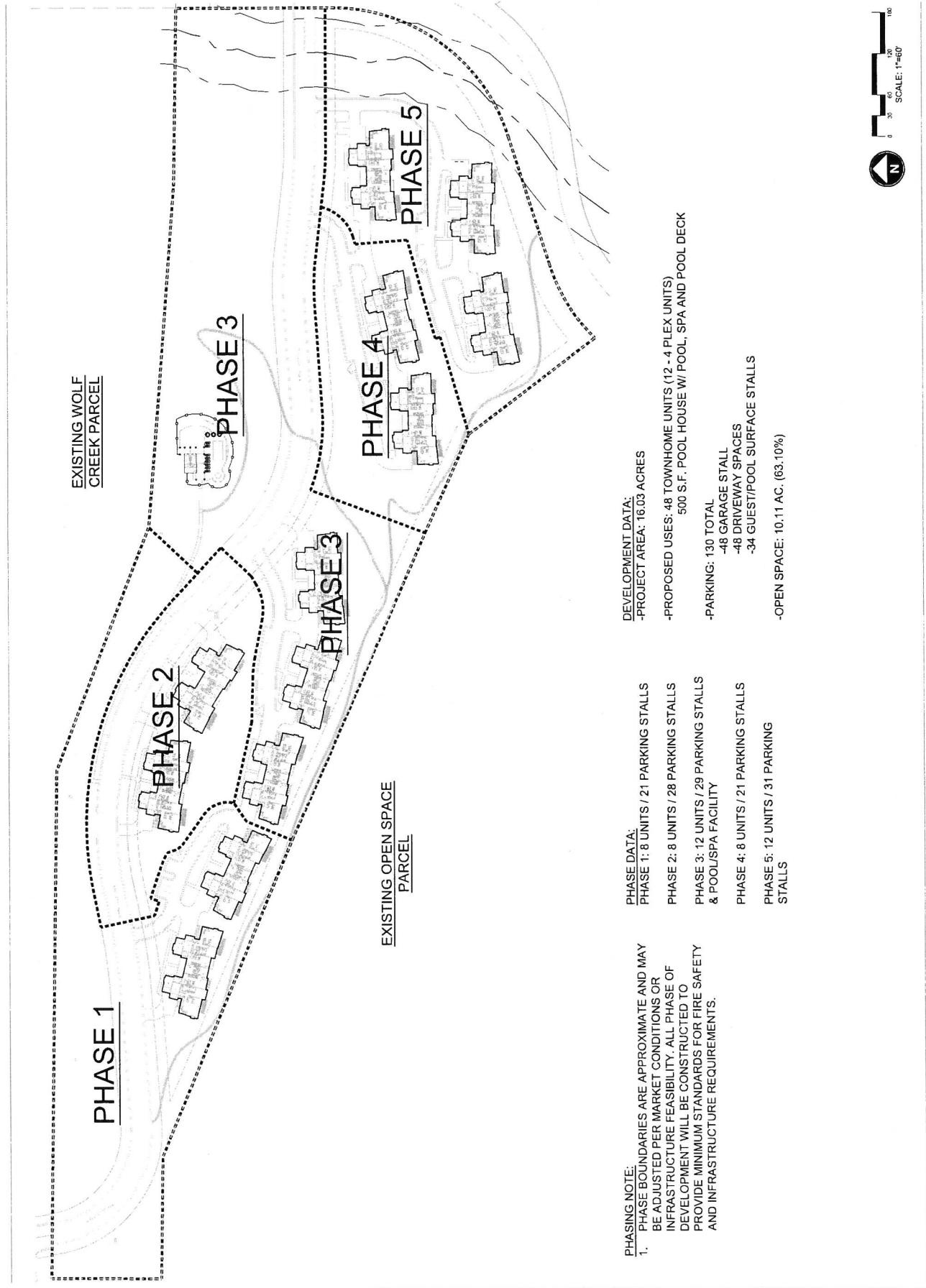
P.R.U.D.
APPROVAL
WEBER COUNTY, UT



DATE: OCTOBER 2013
PROJECT: 202
DRAWN BY: MP
REVIEW BY: EL
VERSION: P.R.U.D.
REVISIONS:

SHEET TITLE:
OVERALL
PHASING PLAN
SHEET NUMBER:

P1.0



EXISTING WOLF
CREEK PARCEL

PHASE 2

PHASE 3

PHASE 3

PHASE 4

EXISTING OPEN SPACE
PARCEL

PHASE 5

PHASING NOTE:
1. PHASE BOUNDARIES ARE APPROXIMATE AND MAY BE ADJUSTED PER MARKET CONDITIONS OR INFRASTRUCTURE FEASIBILITY. ALL PHASE OF DEVELOPMENT WILL BE CONSTRUCTED TO PROVIDE MINIMUM STANDARDS FOR FIRE SAFETY AND INFRASTRUCTURE REQUIREMENTS.

PHASE DATA:
PHASE 1: 8 UNITS / 21 PARKING STALLS
PHASE 2: 8 UNITS / 28 PARKING STALLS
PHASE 3: 12 UNITS / 29 PARKING STALLS & POOL/SPA FACILITY
PHASE 4: 8 UNITS / 21 PARKING STALLS
PHASE 5: 12 UNITS / 31 PARKING STALLS

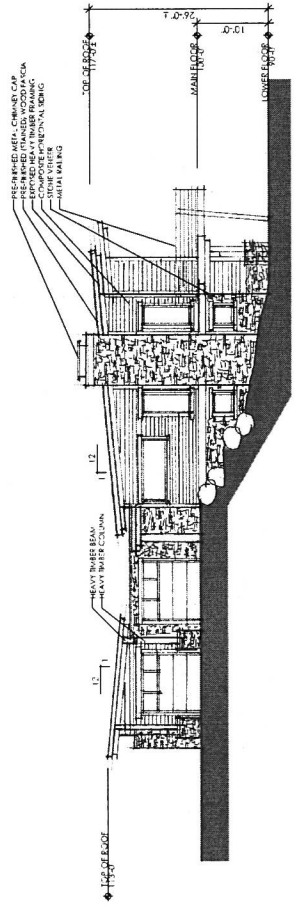
DEVELOPMENT DATA:
-PROJECT AREA: 16.03 ACRES
-PROPOSED USES: 48 TOWNHOME UNITS (12 - 4 PLEX UNITS)
500 S.F. POOL HOUSE W/ POOL, SPA AND POOL DECK
-PARKING: 130 TOTAL
-48 GARAGE STALL
-48 DRIVEWAY SPACES
-34 GUEST/POOL SURFACE STALLS
-OPEN SPACE: 10.11 AC. (63.10%)



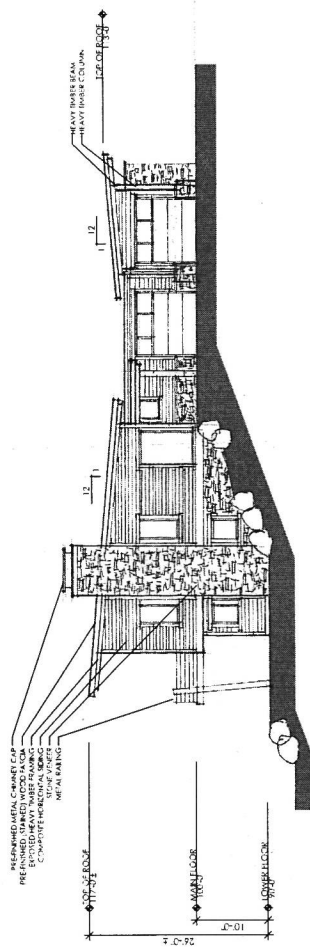
REV.	DATE

PROJECT # 1323
 DATE 10/28/13
 EXTERIOR ELEVATIONS

SHEET
 AE-201



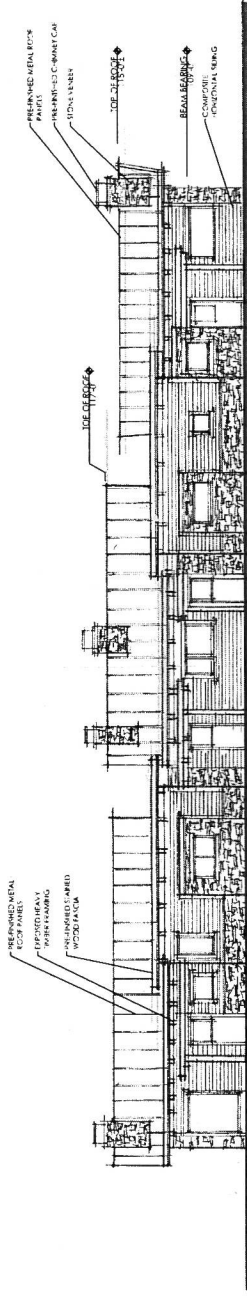
① WEST ELEVATION
 SCALE: 1/8" = 1'-0"



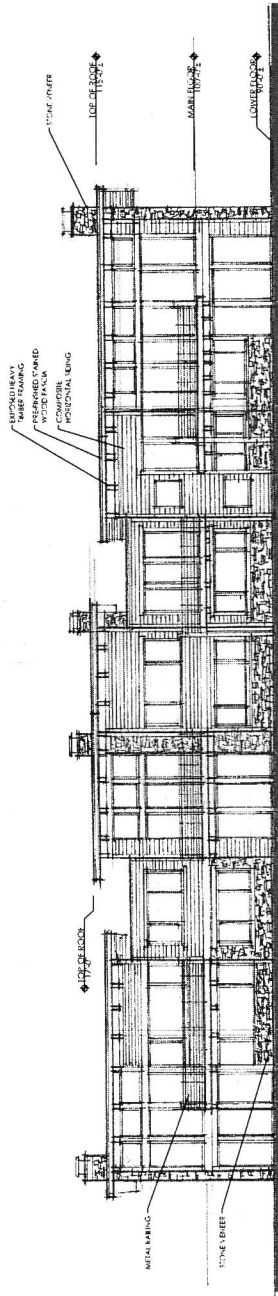
② EAST ELEVATION
 SCALE: 1/8" = 1'-0"

REV	DATE

PROJECT # 1325
DATE 10/28/13
FILE #
EXHIBIT #
SHEET



① NORTH ELEVATION
SCALE: 1/8" = 1'-0"



② SOUTH ELEVATION
SCALE: 1/8" = 1'-0"