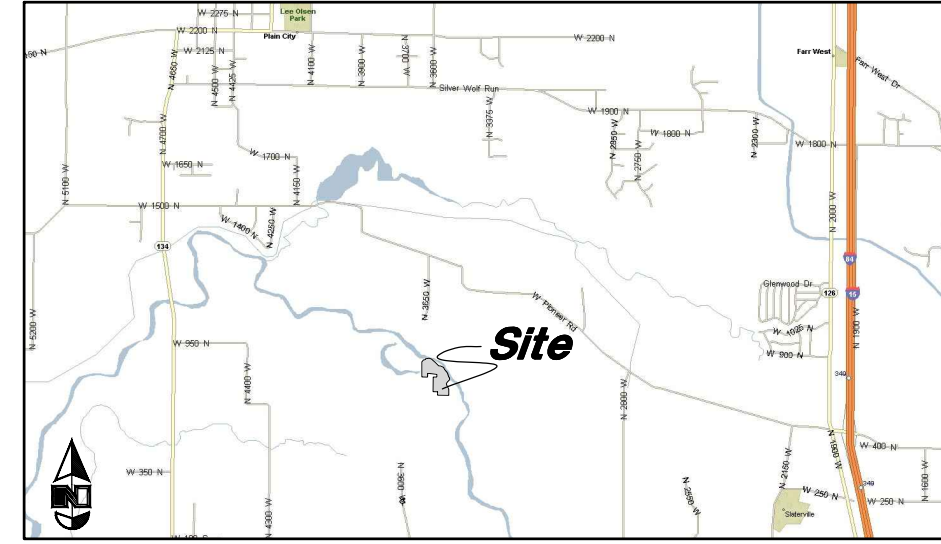
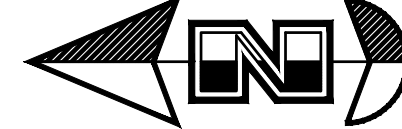


Plat of Annexation to the Limits of Central Weber Sewer Improvement District

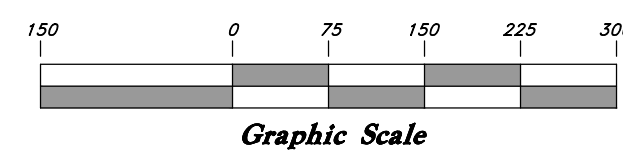
A part the Southeast Quarter of Section 9, T6N, R2W, SLB&M,
U.S. Survey
Weber County, Utah
May 2022



VICINITY MAP
(Not to Scale)



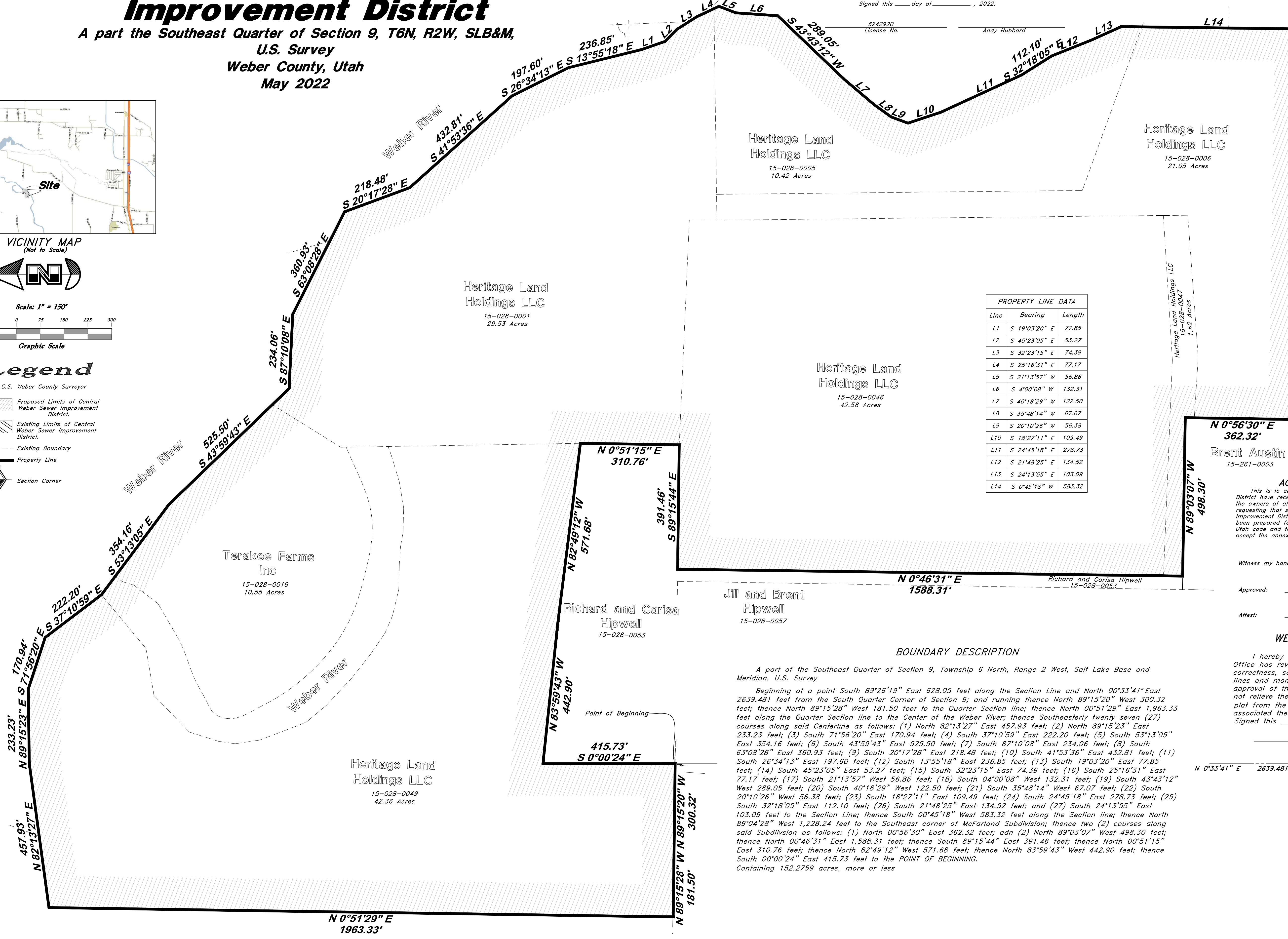
Scale: 1" = 150'



Legend

- W.C.S. Weber County Surveyor
- Proposed Limits of Central Weber Sewer Improvement District
- Existing Limits of Central Weber Sewer Improvement District
- Existing Boundary
- Property Line
- Section Corner

SURVEYOR'S CERTIFICATE
I, Andy Hubbard, do hereby certify that I am a Professional Land Surveyor in the State of Utah, and that I hold Certificate No. 6242920 in accordance with Title 58, Chapter 22, of the Professional Engineers and Land Surveyors Licensing Act. I also certify that this Plat of Annexation to the Central Weber Sewer Improvement District Resolution, has been correctly drawn to the designated scale and is a true and correct representation of the following description of lands included in said subdivision, based on data compiled from records in the Weber County Recorder's Office, and of a survey made on the ground in accordance with Section 17-23-20.
Signed this _____ day of _____, 2022.



Line	Bearing	Length
L1	S 19°03'20" E	77.85
L2	S 45°23'05" E	53.27
L3	S 32°23'15" E	74.39
L4	S 25°16'31" E	77.17
L5	S 21°13'57" W	56.86
L6	S 4°00'08" W	132.31
L7	S 40°18'29" W	122.50
L8	S 35°48'14" W	67.07
L9	S 20°10'26" W	56.38
L10	S 18°27'11" E	109.49
L11	S 24°45'18" E	278.73
L12	S 21°48'25" E	134.52
L13	S 24°13'55" E	103.09
L14	S 0°45'18" W	583.32

BOUNDARY DESCRIPTION
A part of the Southeast Quarter of Section 9, Township 6 North, Range 2 West, Salt Lake Base and Meridian, U.S. Survey
Beginning at a point South 89°26'19" East 628.05 feet along the Section Line and North 00°33'41" East 2639.481 feet from the South Quarter Corner of Section 9; and running thence North 89°15'28" West 300.32 feet; thence North 89°15'28" West 181.50 feet to the Quarter Section line; thence North 00°51'29" East 1,963.33 feet along the Quarter Section line to the Center of the Weber River; thence Southeasterly twenty seven (27) courses along said Centerline as follows: (1) North 82°13'27" East 457.93 feet; (2) North 89°15'23" East 233.23 feet; (3) South 71°56'20" East 170.94 feet; (4) South 37°10'59" East 222.20 feet; (5) South 53°13'05" East 354.16 feet; (6) South 43°59'43" East 525.50 feet; (7) South 87°10'08" East 234.06 feet; (8) South 63°08'28" East 360.93 feet; (9) South 20°17'28" East 218.48 feet; (10) South 41°53'36" East 432.81 feet; (11) South 26°34'13" East 197.60 feet; (12) South 13°55'18" East 236.85 feet; (13) South 19°03'20" East 77.85 feet; (14) South 45°23'05" East 53.27 feet; (15) South 32°23'15" East 74.39 feet; (16) South 25°16'31" East 77.17 feet; (17) South 21°13'57" West 56.86 feet; (18) South 04°00'08" West 132.31 feet; (19) South 43°43'12" West 289.05 feet; (20) South 40°18'29" West 122.50 feet; (21) South 35°48'14" West 67.07 feet; (22) South 20°10'26" West 56.38 feet; (23) South 18°27'11" East 109.49 feet; (24) South 24°45'18" East 278.73 feet; (25) South 32°18'05" East 112.10 feet; (26) South 21°48'25" East 134.52 feet; and (27) South 24°13'55" East 103.09 feet to the Section Line; thence South 00°45'18" West 583.32 feet along the Section line; thence North 89°04'28" West 1,228.24 feet to the Southeast corner of McFarland Subdivision; thence two (2) courses along said Subdivision as follows: (1) North 00°56'30" East 362.32 feet; and (2) North 89°03'07" West 498.30 feet; thence North 00°46'31" East 1,588.31 feet; thence South 89°15'44" East 391.46 feet; thence North 00°51'15" East 310.76 feet; thence North 82°49'12" West 571.68 feet; thence North 83°59'43" West 442.90 feet; thence South 00°00'24" East 415.73 feet to the POINT OF BEGINNING.
Containing 152.2759 acres, more or less

ACCEPTANCE BY LEGISLATIVE BODY
This is to certify that we, the Central Weber Sewer Improvement District have received a petition signed by a majority of the owners and the owners of at least one third in value of real property shown, requesting that said areas be annexed to the Central Weber Sewer Improvement District and that a copy of the ordinance or resolution has been prepared for filing herewith in accordance with the provisions of Utah code and that we have examined and do hereby approve and accept the annexation of the areas as shown as a part of said city.

Witness my hand and official seal this _____
Approved: _____
Attest: _____

WEBER COUNTY SURVEYOR
I hereby certify that the Weber County Surveyor's Office has reviewed this plat for mathematical correctness, section corner data, and for harmony with lines and monument on record in County Offices. The approval of this plat by the Weber County Surveyor does not relieve the licensed Land Surveyor who executed this plat from the responsibilities and/or liabilities associated therewith.
Signed this _____ day of _____, 2017.

Weber County Surveyor

Weber County Recorder

ENTRY NO. _____ FEE PAID _____ FILED FOR RECORD AND RECORDED _____ AT _____ IN BOOK _____ OF OFFICIAL RECORDS, PAGE _____, RECORDED _____

WEBER COUNTY RECORDER

DEPUTY



Duane L Wagstaff
Revocable Trust
15-028-0024