

CONSTRUCTION NOTES:

- Construct 1" copper water lateral and meter box (typical).
- Install 4" pvc sanitary sewer lateral (typical) sl=2% minimum.
- Install double service meter (typical). Install 1-1/2" CTS poly secondary water lateral.
- Install service meter (typical). Install 1-1/2" CTS poly secondary water lateral.
- Install 6" pvc Class 150 land drain lateral sl=1% minimum.
- The land drain pipe must be perforated pvc wrapped with 1" clean gravel and fabric liner on all 4 sides of gravel (includes all 6" laterals).
- All handicap ramps to meet APWA Plan 235.1 Example B Truncated Dome Gray in Color.
- All fire hydrants shall meet Water District Standards.

Approved for Construction
Weber County Engineer
Date: _____

Developer:
Pat Burns
Lync Construction
801-710-2234

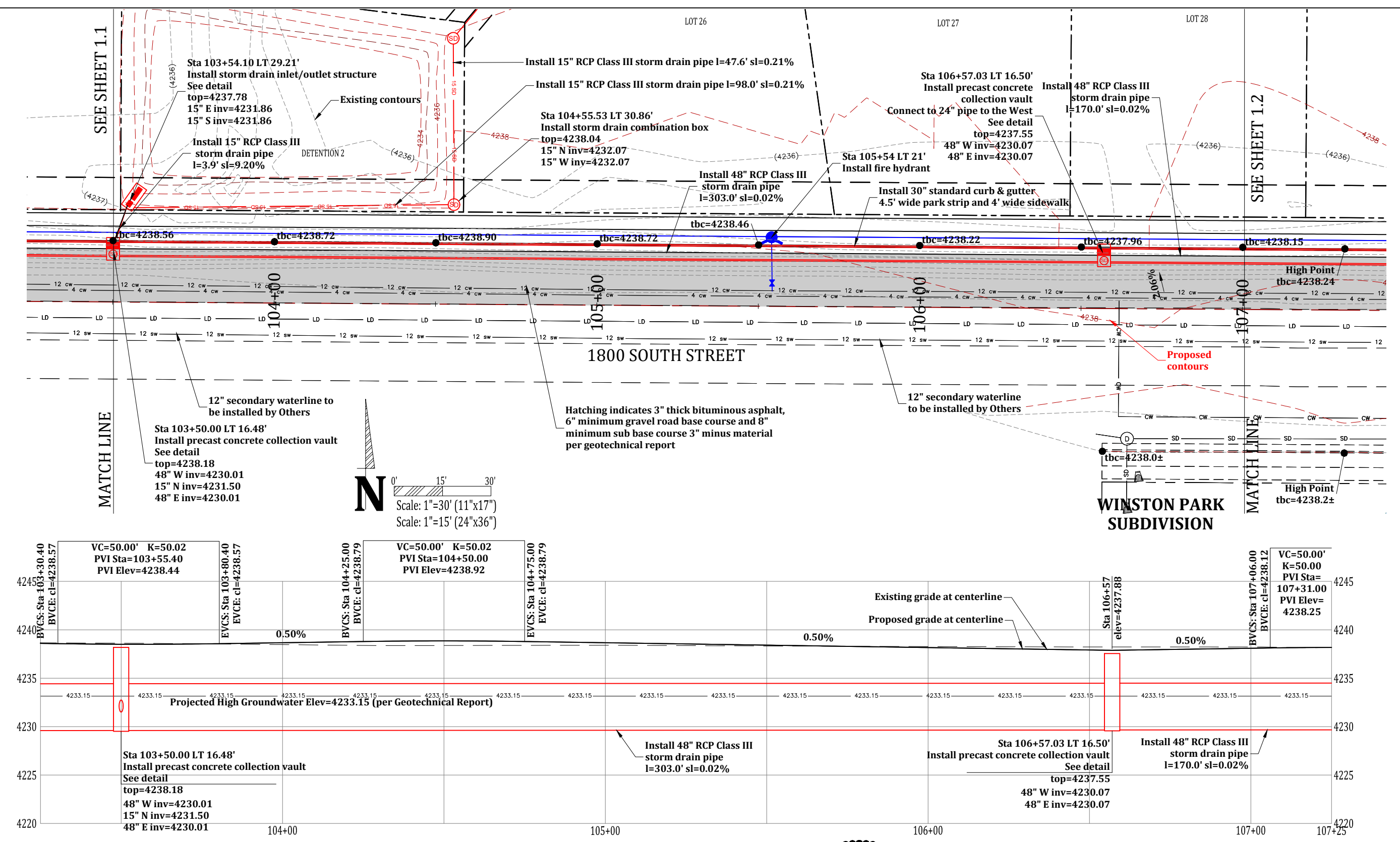
The Geotechnical Report provided by: CMT Engineering Laboratories (Project No. 10878, Dated March 7, 2018) has critical information in regards to this project and must be followed.

Professional Engineer Seal:
LYNN D. DALL
No. 182598
06-20-22
STATE OF UTAH

Project: IMPROVEMENTS STAGECOACH ESTATES WEBER COUNTY, UTAH
Title: 1800 SOUTH STREET PLAN & PROFILE: STA 100+00 - 103+50
Date: 20 JUNE 2022 | **Sheet** 1.0

Prepared By: Summers Engineering Collective - Jen Summers - Summers.eng.collective@gmail.com

#	Date	Revision



CONSTRUCTION NOTES:
 1. Construct 1" copper water lateral and meter box (typical).
 2. Install 4" pvc sanitary sewer lateral (typical) sl=2% minimum.

3. Install double service meter (typical). Install 1-1/2" CTS poly secondary water lateral.
 4. Install service meter (typical). Install 1-1/2" CTS poly secondary water lateral.

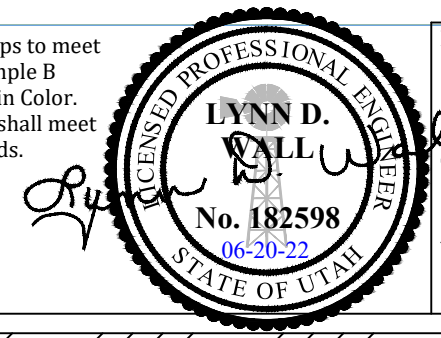
5. Install 6" pvc Class 150 land drain lateral sl=1% minimum.
 6. The land drain pipe must be perforated pvc wrapped with 1" clean gravel and fabric liner on all 4 sides of gravel (includes all 6" laterals).

7. All handicap ramps to meet APWA Plan 235.1 Example B Truncated Dome Gray in Color.
 8. All fire hydrants shall meet Water District Standards.

Approved for Construction
 Weber County Engineer
 Date: _____

Developer:
 Pat Burns
 Lync Construction
 801-710-2234

The Geotechnical Report provided by: CMT Engineering Laboratories (Project No. 10878, Dated March 7, 2018) has critical information in regards to this project and must be followed.



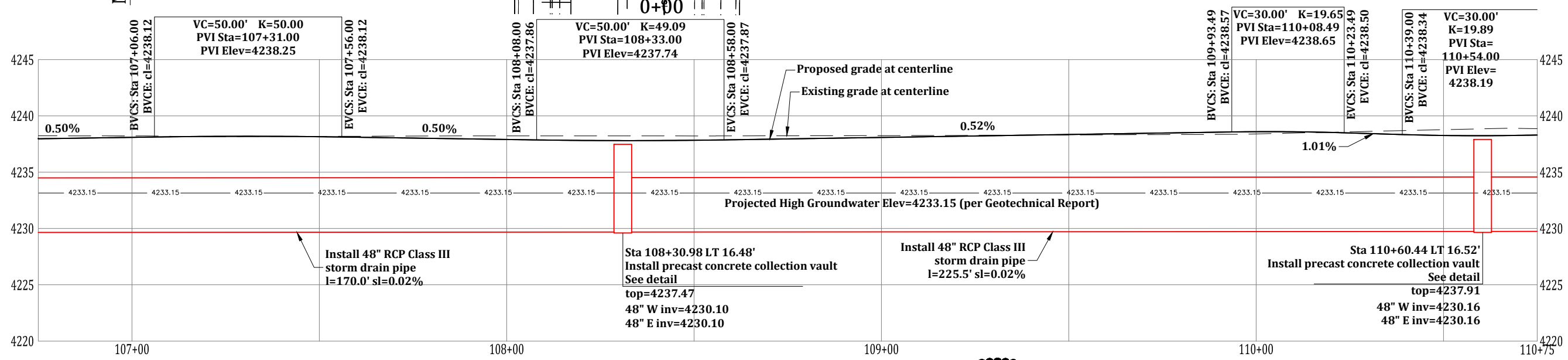
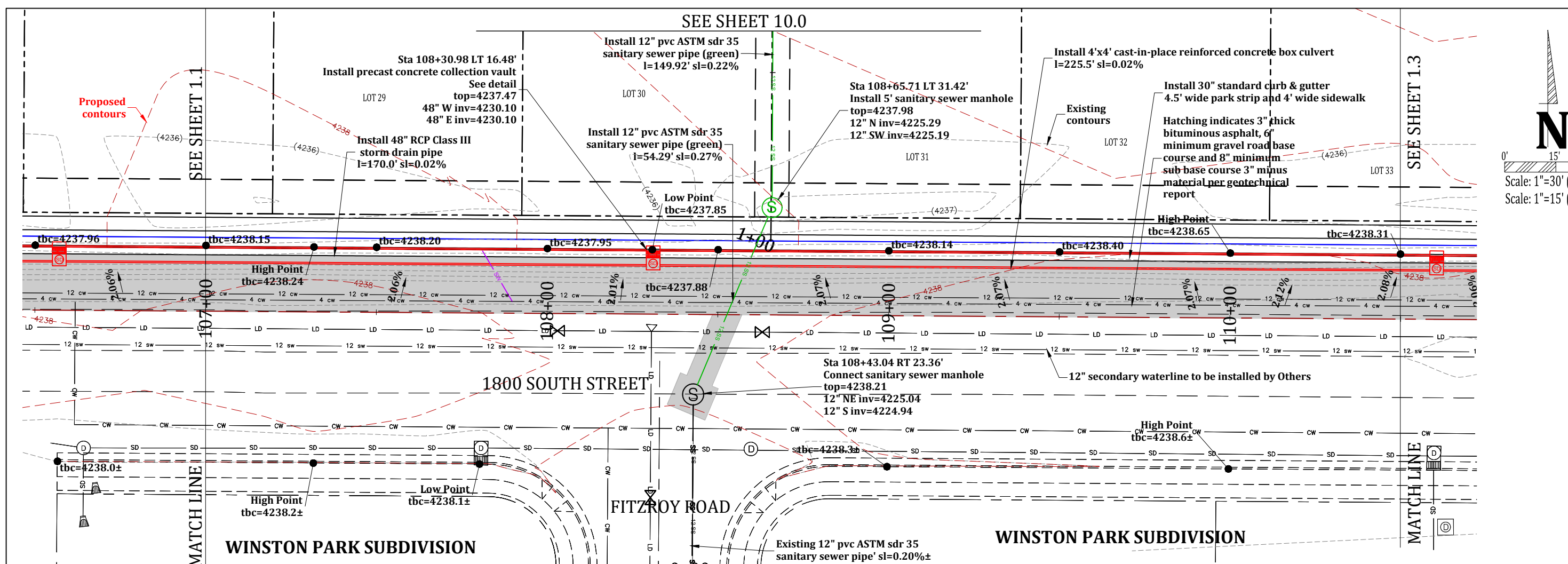
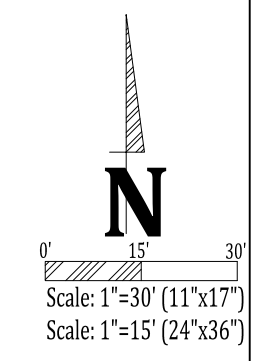
Project: **IMPROVEMENTS STAGECOACH ESTATES WEBER COUNTY, UTAH**
 Title: **1800 SOUTH STREET PLAN & PROFILE: STA 103+50 - 107+00**
 Date: 20 JUNE 2022 | Sheet 1.1

Prepared By: **Summers Engineering Collective**
 - Jen Summers -
 Summers.eng.collective@gmail.com

#	Date	Revision

SEE SHEET 10.0

Proposed contours



- CONSTRUCTION NOTES:**
1. Construct 1" copper water lateral and meter box (typical).
 2. Install 4" pvc sanitary sewer lateral (typical) sl=2% minimum.

3. Install double service meter (typical). Install 1-1/2" CTS poly secondary water lateral.
4. Install service meter (typical). Install 1-1/2" CTS poly secondary water lateral.

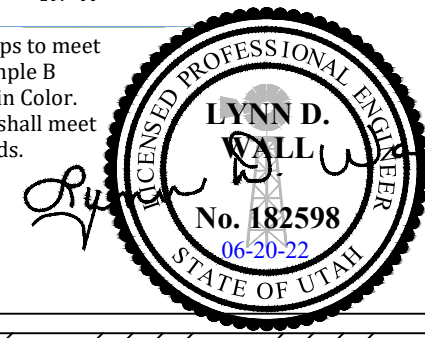
5. Install 6" pvc Class 150 land drain lateral sl=1% minimum.
6. The land drain pipe must be perforated pvc wrapped with 1" clean gravel and fabric liner on all 4 sides of gravel (includes all 6" laterals).

7. All handicap ramps to meet APWA Plan 235.1 Example B Truncated Dome Gray in Color.
8. All fire hydrants shall meet Water District Standards.

Approved for Construction
Weber County Engineer
Date: _____

Developer:
Pat Burns
Lync Construction
801-710-2234

The Geotechnical Report provided by: CMT Engineering Laboratories (Project No. 10878, Dated March 7, 2018) has critical information in regards to this project and must be followed.



Project: **IMPROVEMENTS STAGECOACH ESTATES WEBER COUNTY, UTAH**

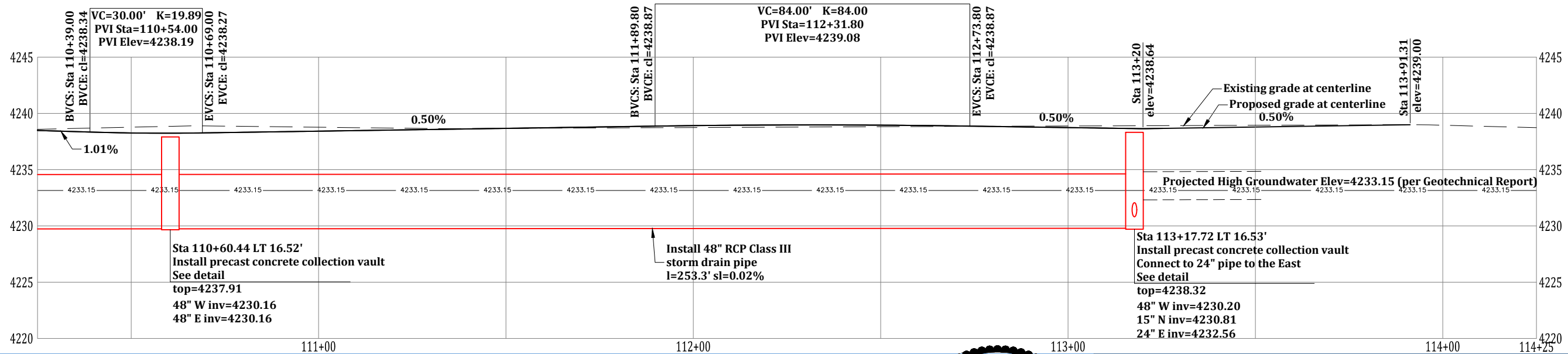
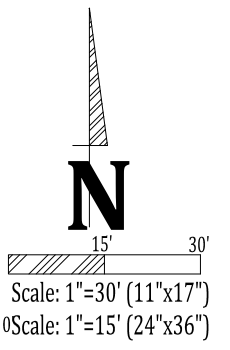
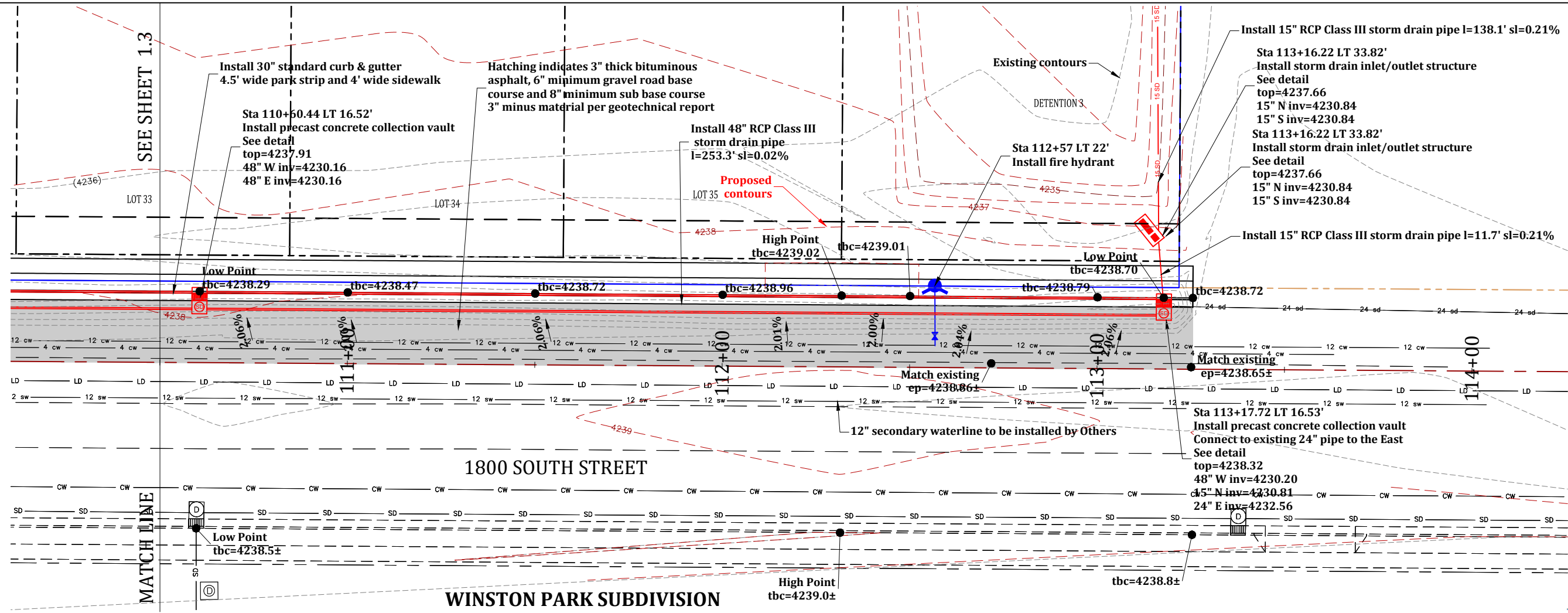
Title: **1800 SOUTH STREET PLAN & PROFILE: STA 107+00 - 110+50**

Date: 20 JUNE 2022

Sheet 1.2

Prepared By: **Summers Engineering Collective**
- Jen Summers -
Summers.eng.collective@gmail.com

#	Date:	Revision:



- CONSTRUCTION NOTES:**
1. Construct 1" copper water lateral and meter box (typical).
 2. Install 4" pvc sanitary sewer lateral (typical) sl=2% minimum.

3. Install double service meter (typical). Install 1-1/2" CTS poly secondary water lateral.
4. Install service meter (typical). Install 1-1/2" CTS poly secondary water lateral.

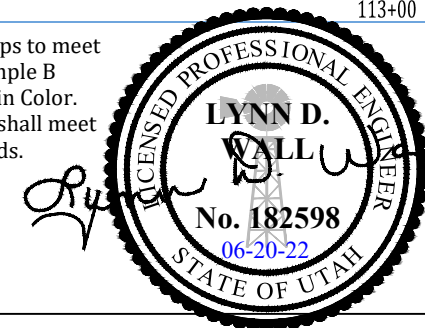
5. Install 6" pvc Class 150 land drain lateral sl=1% minimum.
6. The land drain pipe must be perforated pvc wrapped with 1" clean gravel and fabric liner on all 4 sides of gravel (includes all 6" laterals).

7. All handicap ramps to meet APWA Plan 235.1 Example B Truncated Dome Gray in Color.
8. All fire hydrants shall meet Water District Standards.

Approved for Construction
Weber County Engineer
Date: _____

Developer:
Pat Burns
Lync Construction
801-710-2234

The Geotechnical Report provided by: CMT Engineering Laboratories (Project No. 10878, Dated March 7, 2018) has critical information in regards to this project and must be followed.



Project: IMPROVEMENTS STAGECOACH ESTATES WEBER COUNTY, UTAH
Title: 1800 SOUTH STREET PLAN & PROFILE: STA 110+50 - 114+00
Date: 20 JUNE 2022

Prepared By: Summers Engineering Collective - Jen Summers - Summers.eng.collective@gmail.com

#	Date	Revision