



Weber County

Weber County Planning Division
www.co.weber.ut.us/planning_commission
2380 Washington Blvd., Suite 240
Ogden, Utah 84401-1473
Voice: (801) 399-8791
Fax: (801) 399-8862

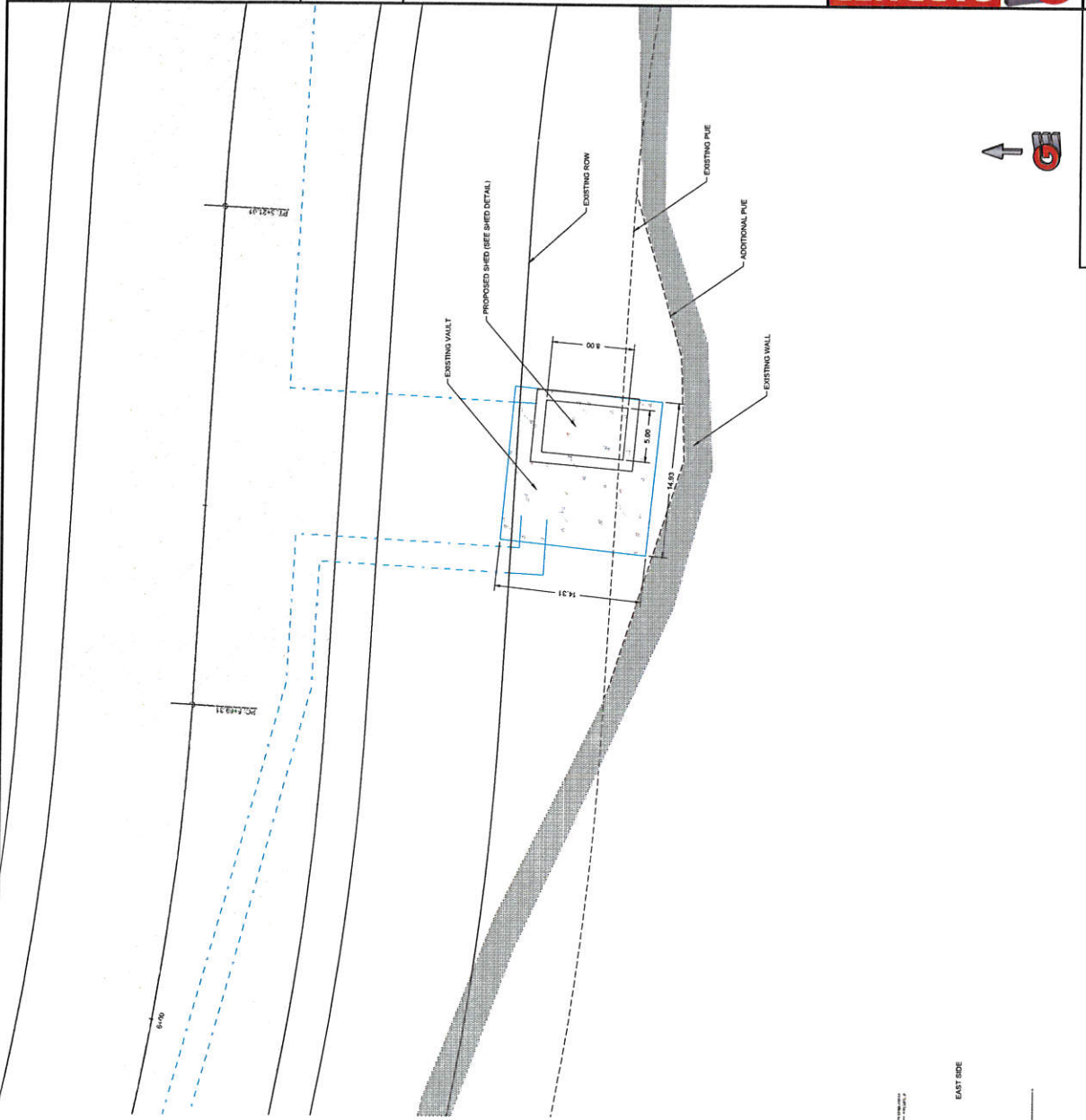
Legacy Mountain Estates LLC
6068 E Nighthawk Lane
Huntsville, UT 84317

RE: Legacy Mountain Estates PRUD Conditional Use Permit Revisions

Based on LUC 108-4-3(b)(2)g, the Weber County Planning Division has approved a de minimis change to the conditional use permit (CUP 2021-04) known as Legacy Mountain Estates PRUD. The changes includes the land use approval of a water utility building as shown on the attached plans. Any additional changes to the conditional use permit will need to be formally submitted to the Planning Division for review.


Rick Grover
Weber County Planning Director

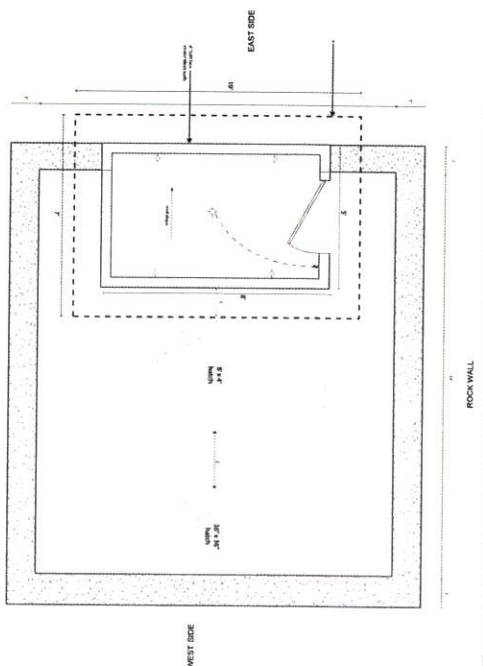
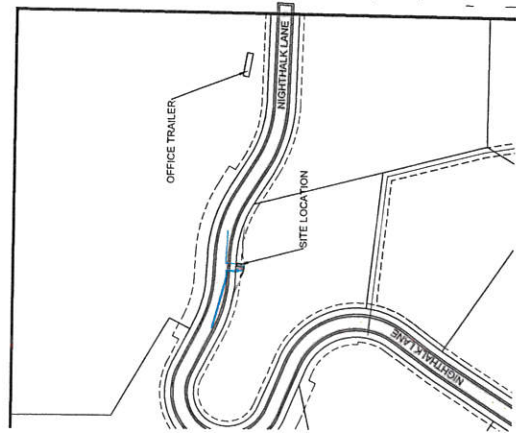
6/16/22
Date



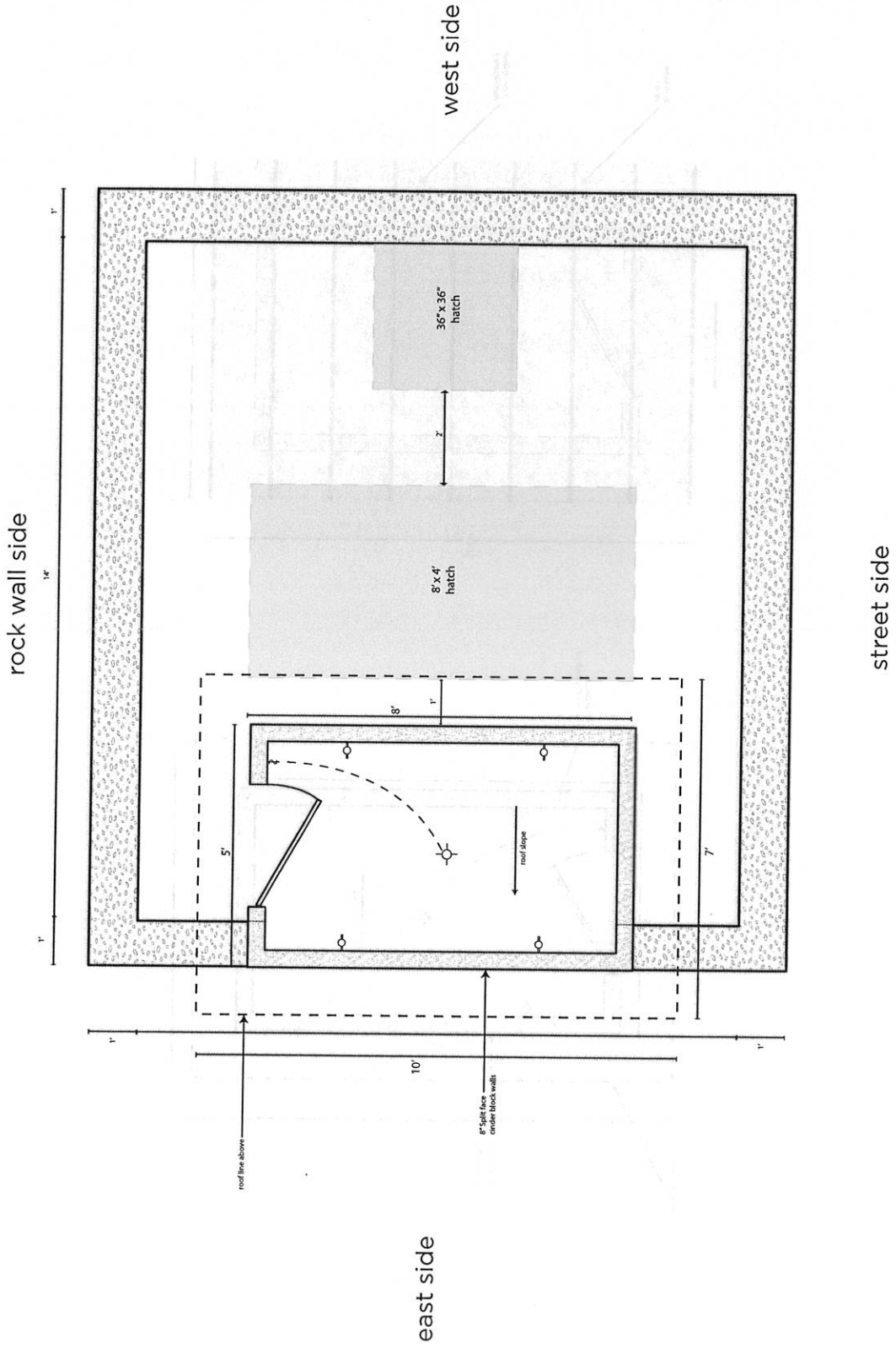
SOUTH QUAIL LN

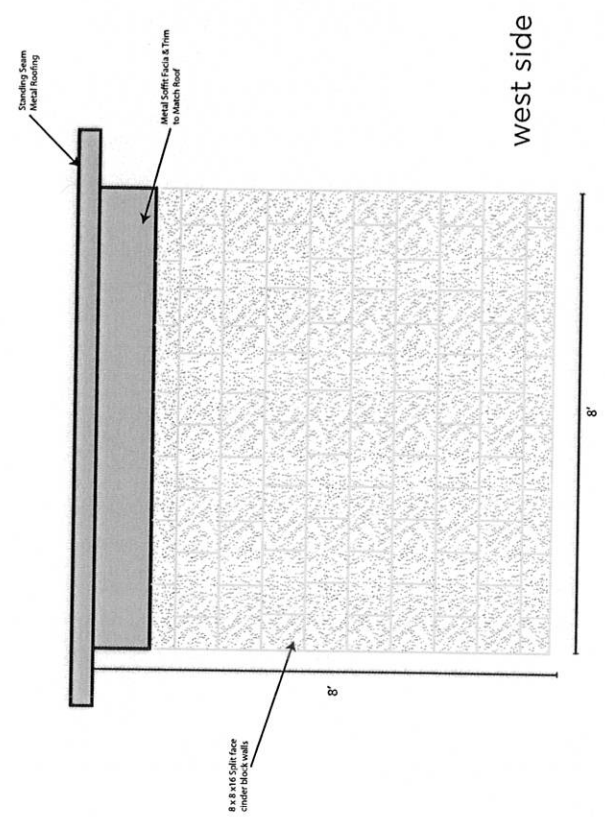
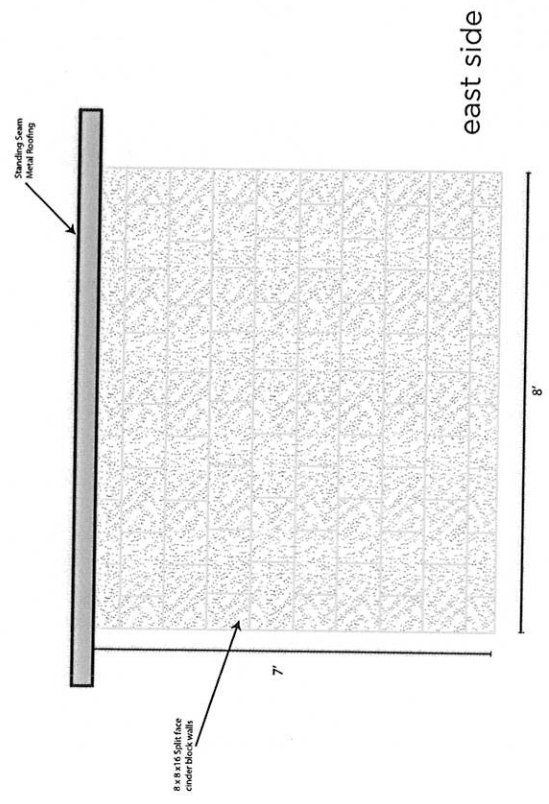
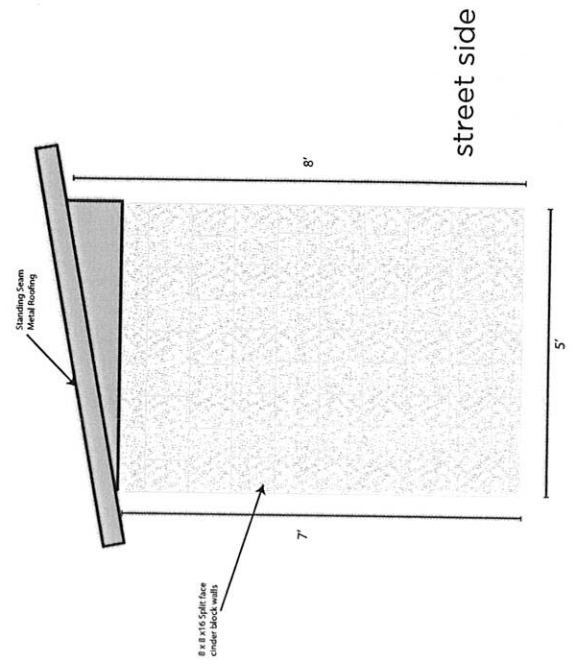
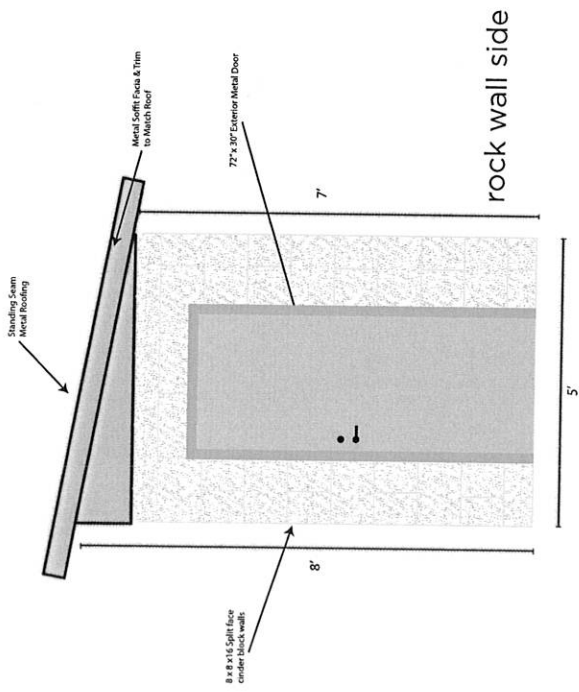
PRV SHED SITE PLAN

VICINITY MAP

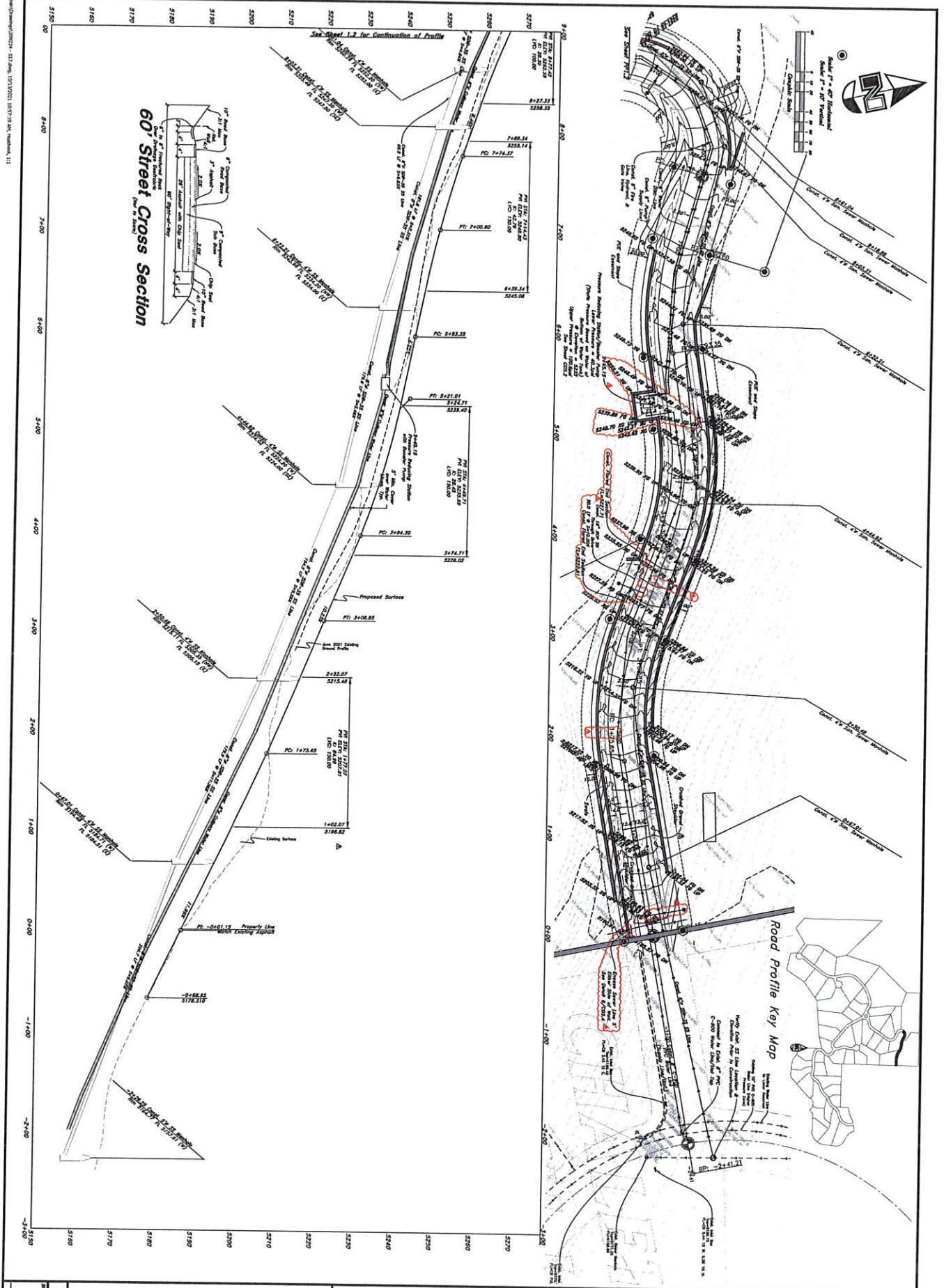


PRV Control Shed









Nighthawk Lane Profile View
Legacy Mountain Estates
 A part of Section 23, Township 6 North, Range 1 East,
 Salt Lake Base & Meridian, U.S. Survey

G B GREAT BASIN ENGINEERING INC.
 9746 SOUTH 1475 EAST OGDEN, UTAH 84403
 MAIN (801)394-4515 S.L.O (801)521-0222 FAX (801)392-7544
 WWW.GREATBASINENGINEERING.COM



| | | |
|-------------|----------------------------|-------------|
| 23 JUL 2021 | PP1.1 | |
| 13 OCT 2021 | Conformations Set Revision | |
| 17 AUG 2021 | Revisions | |
| KEY | DATE | DESCRIPTION |

W:\2021\Legacy Mountain Estates\2021\2021 - S17.dwg, 10/12/2021 10:57:38 AM, 1:11