



January 21, 2015

Dana Shuler
Weber County

Project: Mallard Springs Subdivision
Re: Engineering Division

Below please find our response to your Miradi posted comments dated November 11, 2014 for the preliminary review. The comments have been incorporated into the final plat set. Please note that our numbering reference system corresponds to your comment numbering system.

1. Noted
2. General Sewer Line
 - a. The stationing has been made continuous.
 - b. A 0.2' drop has been incorporated into the design.
 - c. State Rule R317-3-2-2.3H has been reviewed and applied to the plans. After matching the 0.8 full elevations for both the 8" and the 12", the drop required was 0.3'.
 - d. The easement has been shown on plans.
3. The details have been removed.
4. The profiles have been updated.
5. The canal has been shown and noted on Sheet 12. The approval letter will be provided to the County.
6. A note on the SWPPP has been provided to include silt fencing for the length of the sewer extension.

We appreciate your review and trust we have changed and/or clarified all of your comments referenced herein.

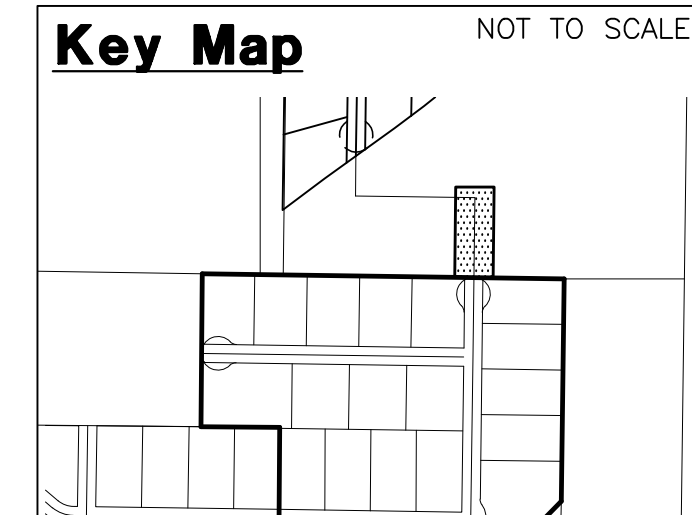
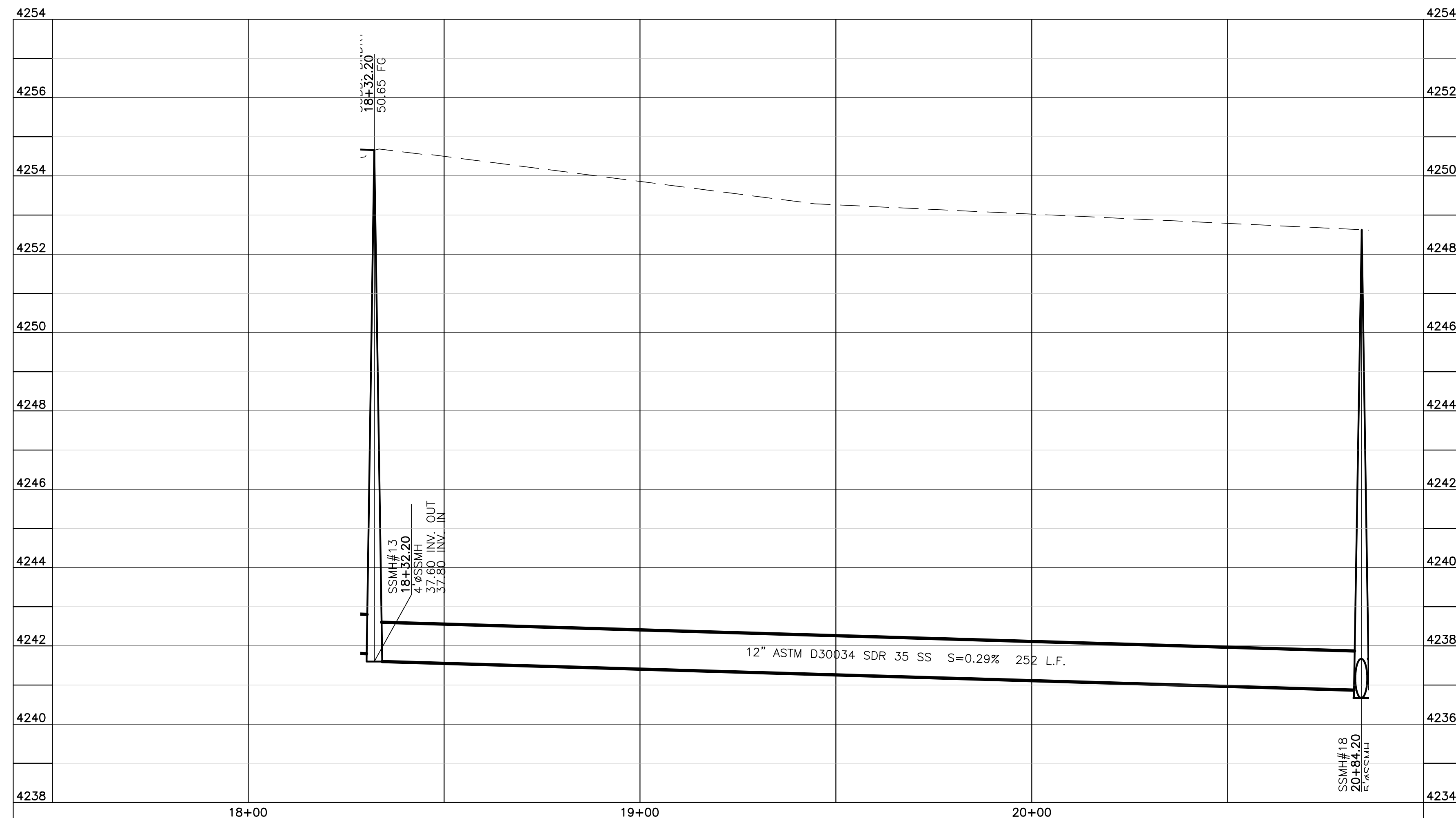
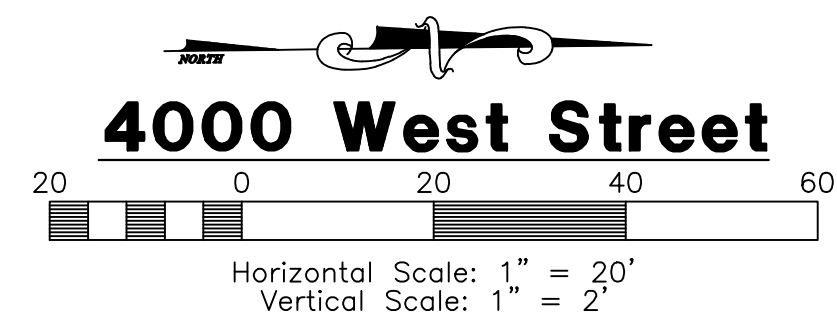
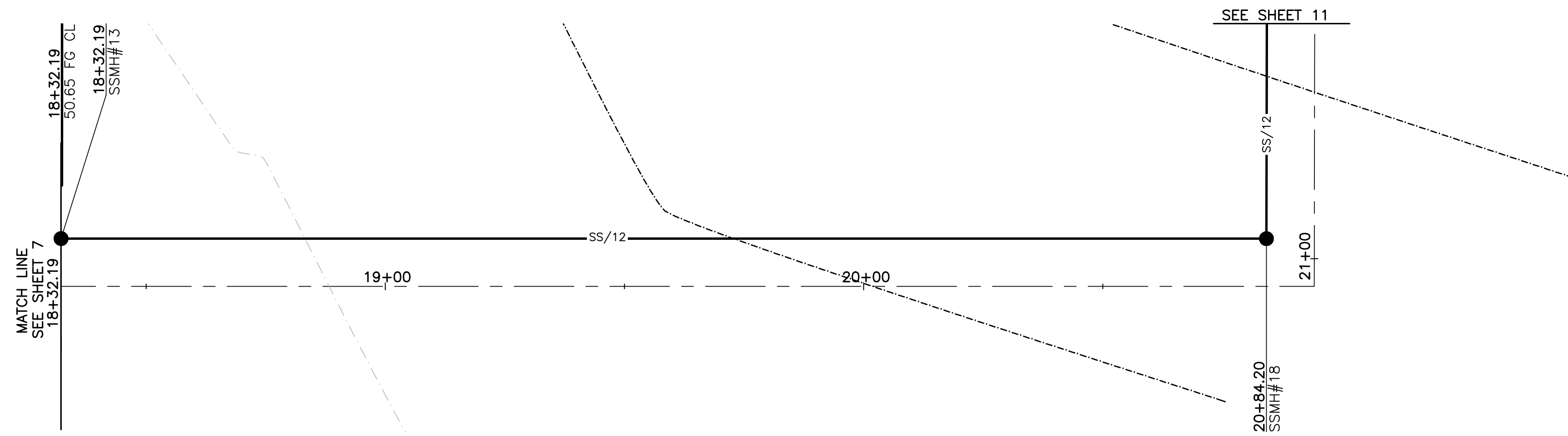
If you have any questions, or we can be of further assistance, please let us know.

Sincerely,
REEVE & ASSOCIATES, INC.

Nate Reeve, P.E.
Principal Engineer
nreeve@reeve-assoc.com

Solutions You Can Build On™

Civil Engineering • Land Planning • Structural Engineering • Landscape Architecture • Land Surveying • Construction Surveying
920 Chambers St., Suite 14 • Ogden, Utah 84403 • Tel: 801-621-3100 • Fax: 801-621-2666
ogden@reeve-assoc.com • reeve-assoc.com



Construction Notes:

- 1) ALL CONSTRUCTION IS TO CONFORM TO THE STANDARD DRAWINGS AND SPECIFICATIONS OF WEBER COUNTY.
 - 2) CONSTRUCT HANDICAP RAMP PER ADA AND CITY REQUIREMENTS.
- CULINARY WATER**
W/8 - 8" PVC C-900 CLASS 200 WATER
- SANITARY SEWER**
SS/8 - 8" ASTM D3034 SDR 35 SEWER
SS/12 - 12" ASTM D3034 SDR 35 SEWER
- DUE TO THE SHALLOWNESS OF THE SEWER LINE THROUGH ADJACENT FIELD, CLASS I OR CLASS II PIPE EMBEDMENT (PER ASTM D2487) INSTALLED PER ASTM D 2321 WITH 95% MODIFIED PROCTOR.

STORM DRAIN

SD/15 - 15" RCP STORM DRAIN

SECONDARY WATER

SW/8 - 8" PVC C-900 SECONDARY WATER LINE

Canal Crossing Notes

- 1) ANY CROSSING OF THE HOOPER IRR. CANALS MUST OBTAIN A LICENSE AGREEMENT.
- 2) A CHAIN LINK FENCE MUST BE INSTALLED AT 12" FROM HIGH BANK ON THE OFF ROAD SIDE AND 22' ON ROAD SIDE. THE PROPERTY IS ON THE OFF ROAD SIDE, BUT MUST FENCE THE ENTIRE EASEMENT THROUGH THE PROPERTY.
- 3) THE SEWER LINE MUST BE INSTALLED IN AN 18" STEEL CASING EXTENDING 4'-0" BEYOND HIGH BANK BOTH SIDES OF THE CANAL ACCORDING TO HOOPER IRR. COMPANY STANDARD DETAILS.
- 4) NO DRAINAGE FROM THE DEVELOPMENT IS ALLOWED INTO THE CANAL SYSTEM.
- 5) ALL CONSTRUCTION TO BE DONE IN ACCORDANCE WITH HOOPER IRR. COMPANY STANDARDS.

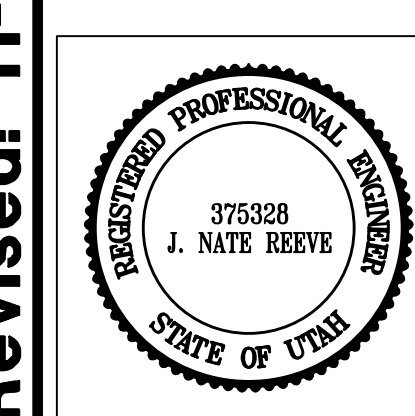
Reeve & Associates, Inc.
920 CHAMBERS STREET, SUITE 14, OGDEN, UTAH 84403
TEL: (801) 621-2100 FAX: (801) 621-2666 www.reeve-assoc.com

LAND PLANNERS • CIVIL ENGINEERS • LAND SURVEYORS
TRAFFIC ENGINEERS • STRUCTURAL ENGINEERS • LANDSCAPE ARCHITECTS

REVISIONS	DATE	DESCRIPTION
5-2-14	Rh	County Comments
9-4-14	ST	County Comments
9-30-14	ST	County Comments
10-9-14	ST	County Comments
11-3-14	RH	Sewer Revisions
11-24-14	ST	HIC Comments

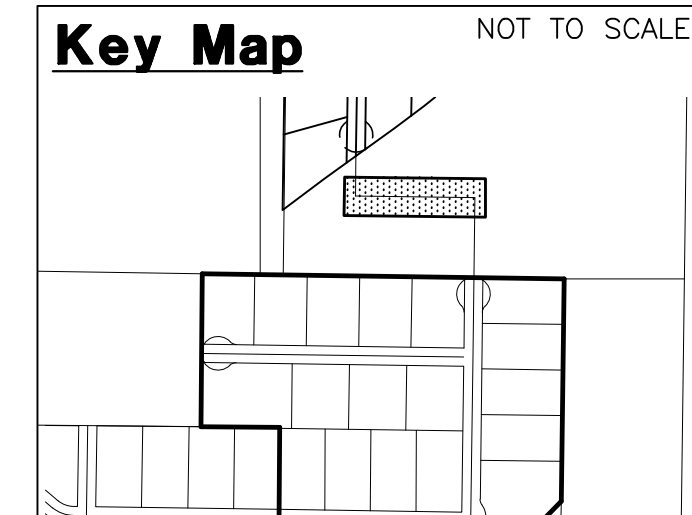
Mallard Springs Subdivision
WEBER COUNTY, UTAH

4000 West Street
18+32.19 - 21+00.00



Project Info.
Engineer: J. NATE REEVE, P.E.
Drafted: R. HANSEN
Begin Date: NOVEMBER 4, 2013
Name: MALLARD SPRINGS SUBDIVISION
Number: 3442-A30

Blue Stakes Location Center
Call: Toll Free 1-800-662-4111
Two Working Days Before You Dig

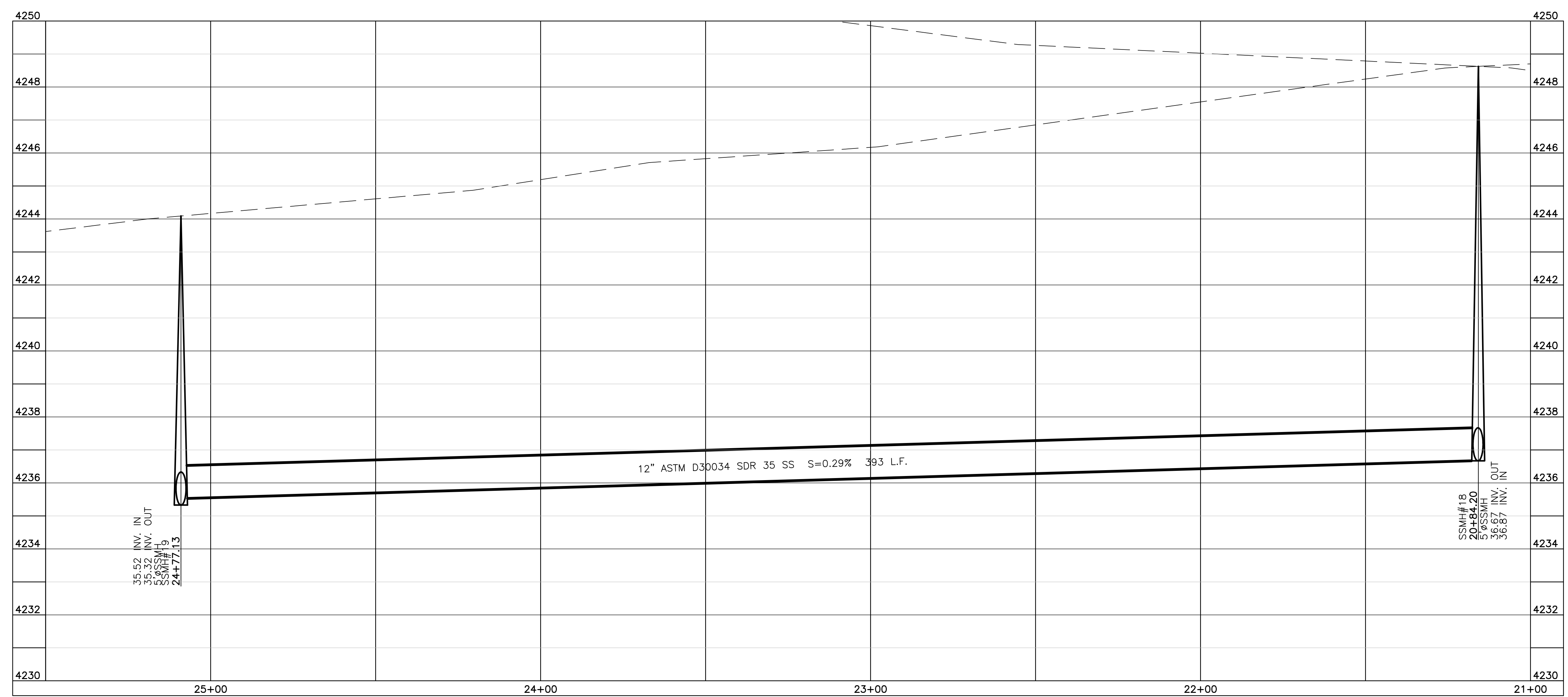
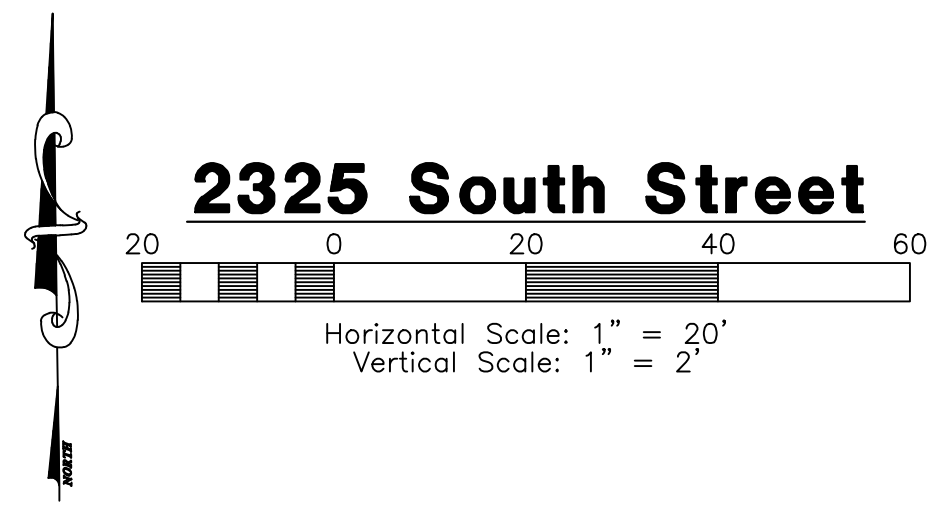
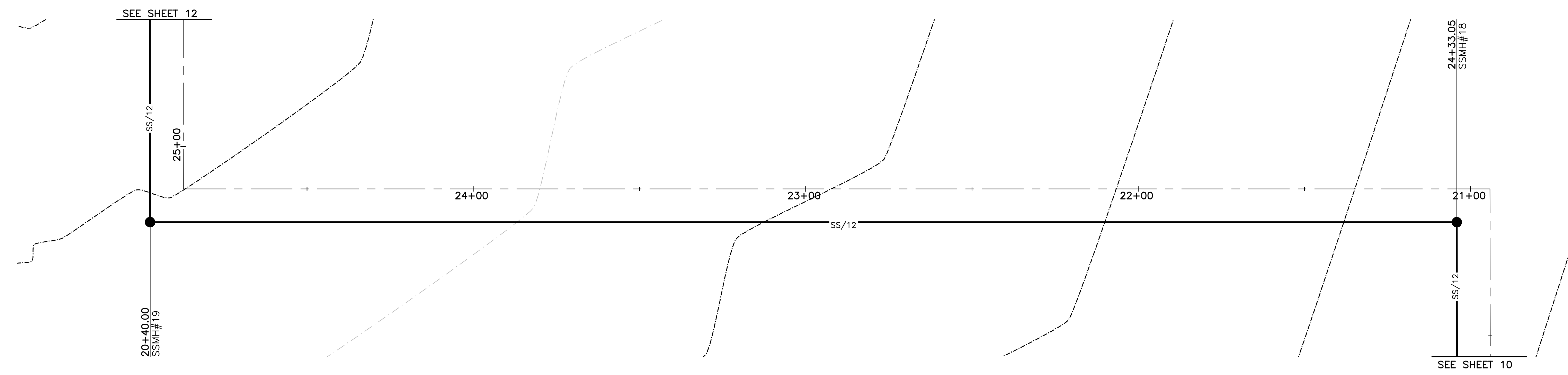


Construction Notes:

- 1) ALL CONSTRUCTION IS TO CONFORM TO THE STANDARD DRAWINGS AND SPECIFICATIONS OF WEBER COUNTY.
 - 2) CONSTRUCT HANDICAP RAMP PER ADA AND CITY REQUIREMENTS.
- CULINARY WATER**
W/8 - 8" PVC C-900 CLASS 200 WATER
- SANITARY SEWER**
SS/8 - 8" ASTM D3034 SDR 35 SEWER
SS/12 - 12" ASTM D3034 SDR 35 SEWER
- DUE TO THE SHALLOWNESS OF THE SEWER LINE THROUGH ADJACENT FIELD, CLASS I OR CLASS II PIPE EMBEDMENT (PER ASTM D2487) INSTALLED PER ASTM D 2321 WITH 95% MODIFIED PROCTOR.
- STORM DRAIN**
SD/15 - 15" RCP STORM DRAIN
- SECONDARY WATER**
SW/8 - 8" PVC C-900 SECONDARY WATER LINE

Canal Crossing Notes

- 1) ANY CROSSING OF THE HOOPER IRR. CANALS MUST OBTAIN A LICENSE AGREEMENT.
- 2) A CHAIN LINK FENCE MUST BE INSTALLED AT 12' FROM HIGH BANK ON THE OFF ROAD SIDE AND 22' ON ROAD SIDE. THE PROPERTY IS ON THE OFF ROAD SIDE, BUT MUST FENCE THE ENTIRE EASEMENT THROUGH THE PROPERTY.
- 3) THE SEWER LINE MUST BE INSTALLED IN AN 18" STEEL CASING EXTENDING 4'-0" BEYOND HIGH BANK BOTH SIDES OF THE CANAL ACCORDING TO HOOPER IRR. COMPANY STANDARD DETAILS.
- 4) NO DRAINAGE FROM THE DEVELOPMENT IS ALLOWED INTO THE CANAL SYSTEM.
- 5) ALL CONSTRUCTION TO BE DONE IN ACCORDANCE WITH HOOPER IRR. COMPANY STANDARDS.



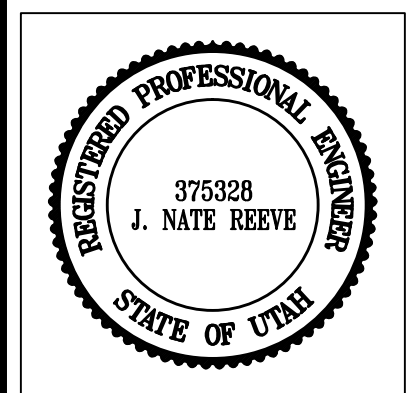
Reeve & Associates, Inc.
920 CHAMBERS STREET, SUITE 14, OGDEN, UTAH 84403
TEL: (801) 621-2100 FAX: (801) 621-2666 WWW.REEVE-ASSOC.COM

LAND PLANNERS • CIVIL ENGINEERS • LAND SURVEYORS
TRAFFIC ENGINEERS • STRUCTURAL ENGINEERS • LANDSCAPE ARCHITECTS

DATE	DESCRIPTION
5-2-14	RH County Comments
9-4-14	ST County Comments
9-30-14	ST County Comments
10-9-14	ST County Comments
11-3-14	RH Sewer Revisions
11-24-14	ST HIC Comments

Mallard Springs Subdivision
WEBER COUNTY, UTAH

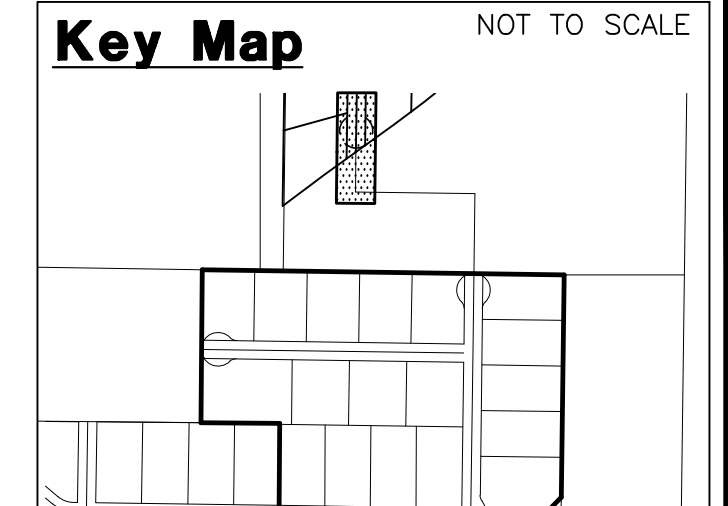
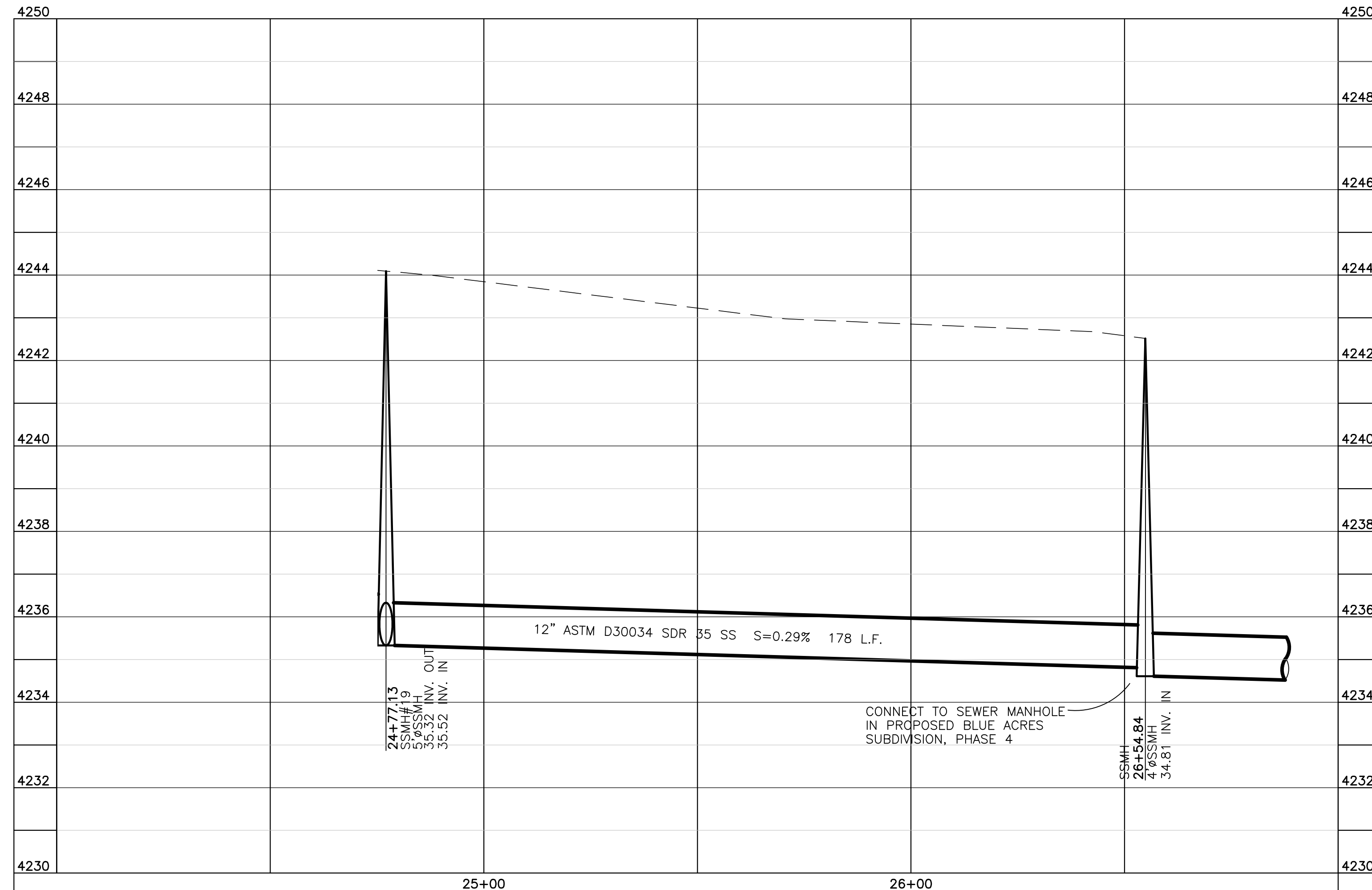
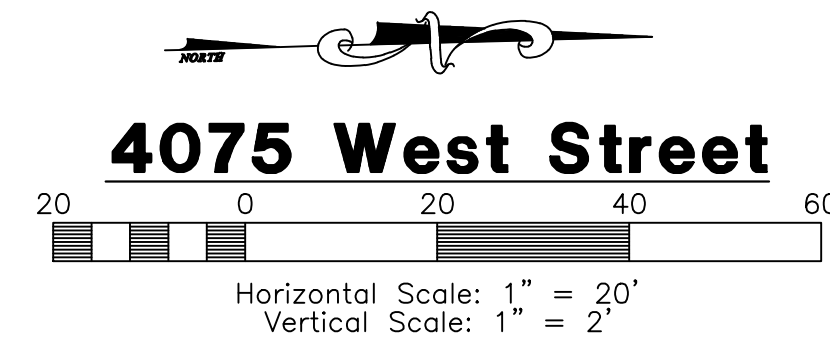
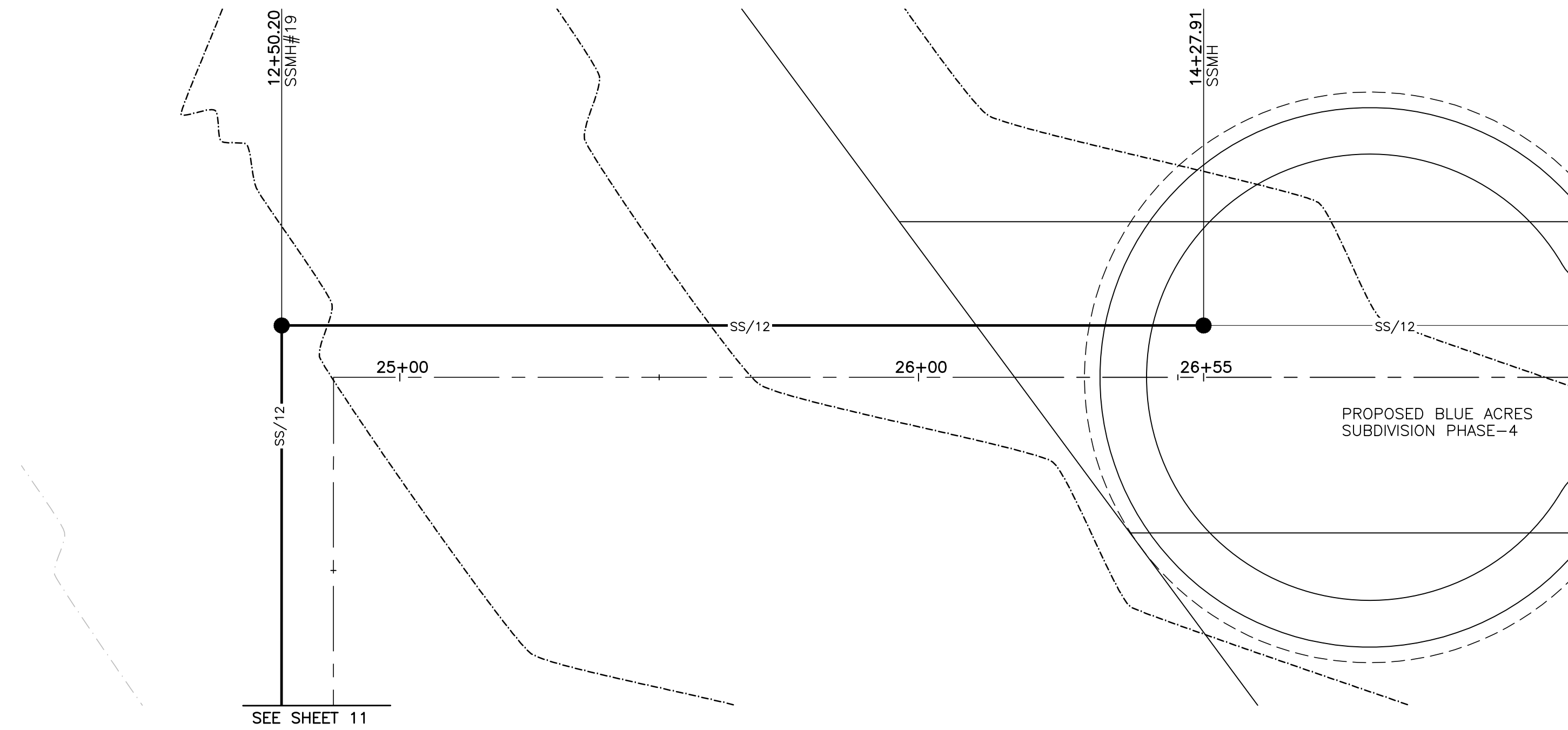
2325 South Street
20+00.00 - 25+00.00



Project Info.

Engineer: J. NATE REEVE, P.E.
 Drafter: R. HANSEN
 Begin Date: NOVEMBER 4, 2013
 Name: MALLARD SPRINGS SUBDIVISION
 Number: 3442-A30

Blue Stakes Location Center
Call: Toll Free 1-800-662-4111
 Two Working Days Before You Dig



Construction Notes:

- 1) ALL CONSTRUCTION IS TO CONFORM TO THE STANDARD DRAWINGS AND SPECIFICATIONS OF WEBER COUNTY.
- 2) CONSTRUCT HANDICAP RAMP PER ADA AND CITY REQUIREMENTS.

CULINARY WATER

W/8 - 8" PVC C-900 CLASS 200 WATER

SANITARY SEWER

SS/8 - 8" ASTM D3034 SDR 35 SEWER
 SS/12 - 12" ASTM D3034 SDR 35 SEWER

DUE TO THE SHALLOWNESS OF THE SEWER LINE THROUGH ADJACENT FIELD, CLASS I OR CLASS II PIPE EMBEDMENT (PER ASTM D2487) INSTALLED PER ASTM D 2321 WITH 95% MODIFIED PROCTOR.

STORM DRAIN

SD/15 - 15" RCP STORM DRAIN

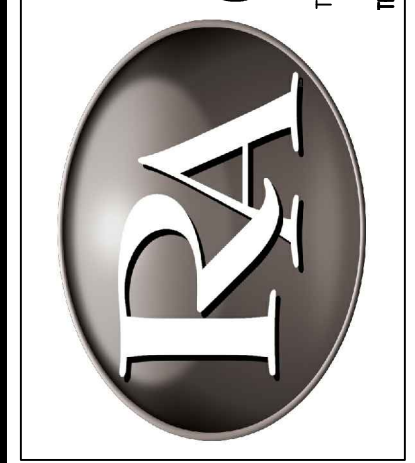
SECONDARY WATER

SW/8 - 8" PVC C-900 SECONDARY WATER LINE

Canal Crossing Notes

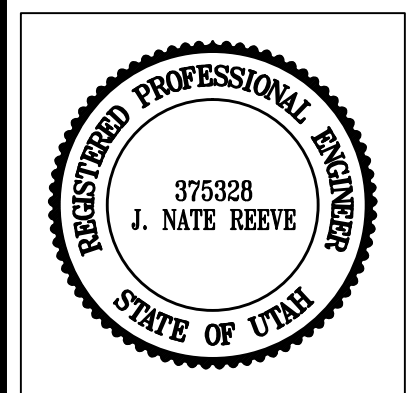
- 1) ANY CROSSING OF THE HOOPER IRR. CANALS MUST OBTAIN A LICENSE AGREEMENT.
- 2) A CHAIN LINK FENCE MUST BE INSTALLED AT 12" FROM HIGH BANK ON THE OFF ROAD SIDE AND 22' ON ROAD SIDE. THE PROPERTY IS ON THE OFF ROAD SIDE, BUT MUST FENCE THE ENTIRE EASEMENT THROUGH THE PROPERTY.
- 3) THE SEWER LINE MUST BE INSTALLED IN AN 18" STEEL CASING EXTENDING 4'-0" BEYOND HIGH BANK BOTH SIDES OF THE CANAL ACCORDING TO HOOPER IRR. COMPANY STANDARD DETAILS.
- 4) NO DRAINAGE FROM THE DEVELOPMENT IS ALLOWED INTO THE CANAL SYSTEM.
- 5) ALL CONSTRUCTION TO BE DONE IN ACCORDANCE WITH HOOPER IRR. COMPANY STANDARDS.

Reeve & Associates, Inc.
 920 CHAMBERS STREET, SUITE 14, OGDEN, UTAH 84403
 TEL: (801) 621-2100 FAX: (801) 621-2666 WWW.REEVE-ASSOC.COM
 LAND PLANNERS • CIVIL ENGINEERS • LAND SURVEYORS
 PUBLIC ENGINEERS • STRUCTURAL ENGINEERS • LANDSCAPE ARCHITECTS



REVISIONS	DATE	DESCRIPTION
5-2-14	Rh	County Comments
9-4-14	ST	County Comments
9-30-14	ST	County Comments
10-9-14	ST	County Comments
11-3-14	RH	Sewer Revisions
11-24-14	ST	HIC Comments

Mallard Springs Subdivision
 WEBER COUNTY, UTAH
4075 West Street
12+00.00 - 15+00.00



Project Info.
 Engineer: J. NATE REEVE, P.E.
 Drafter: R. HANSEN
 Begin Date: NOVEMBER 4, 2013
 Name: MALLARD SPRINGS SUBDIVISION
 Number: 3442-A30

Blue Stakes Location Center
Call: Toll Free
1-800-662-4111
 Two Working Days Before You Dig

Sheet **15**
12 Sheets



A FIFTEEN (15) FOOT EASEMENT FOR THE CONSTRUCTION, MAINTENANCE AND OPERATION OF A SANITARY SEWER LINE LOCATED IN THE SW QUARTER OF SECTION 25, TOWNSHIP 6 NORTH, RANGE 2 WEST, SALT LAKE BASE AND MERIDIAN, U.S. SURVEY, SAID EASEMENT TO BE 7.5 FEET EACH SIDE OF THE FOLLOWING DESCRIBED CENTER LINE:

BEGINNING AT A POINT ON THE SOUTH LINE OF GRANTOR'S PROPERTY, SAID POINT LIES S89°13'14"E, 1324.19 FEET AND S00°35'47"W, 1326.24 FEET AND S89°11'40"E, 618.44 FEET FROM THE WEST QUARTER CORNER OF SAID SECTION 28, THENCE N00°42'51"E, 252.02 FEET; THENCE N89°11'45"W, 393.05 FEET; THENCE N00°46'46"E, 177.71 FEET TO THE POINT OF TERMINUS.

Solutions You Can Build On™

Civil Engineering • Land Planning • Structural Engineering • Landscape Architecture • Land Surveying • Construction Surveying
920 Chambers St., Suite 14 • Ogden, Utah 84403 • Tel: 801-621-3100 • Fax: 801-621-2666
ogden@reeve-assoc.com • reeve-assoc.com