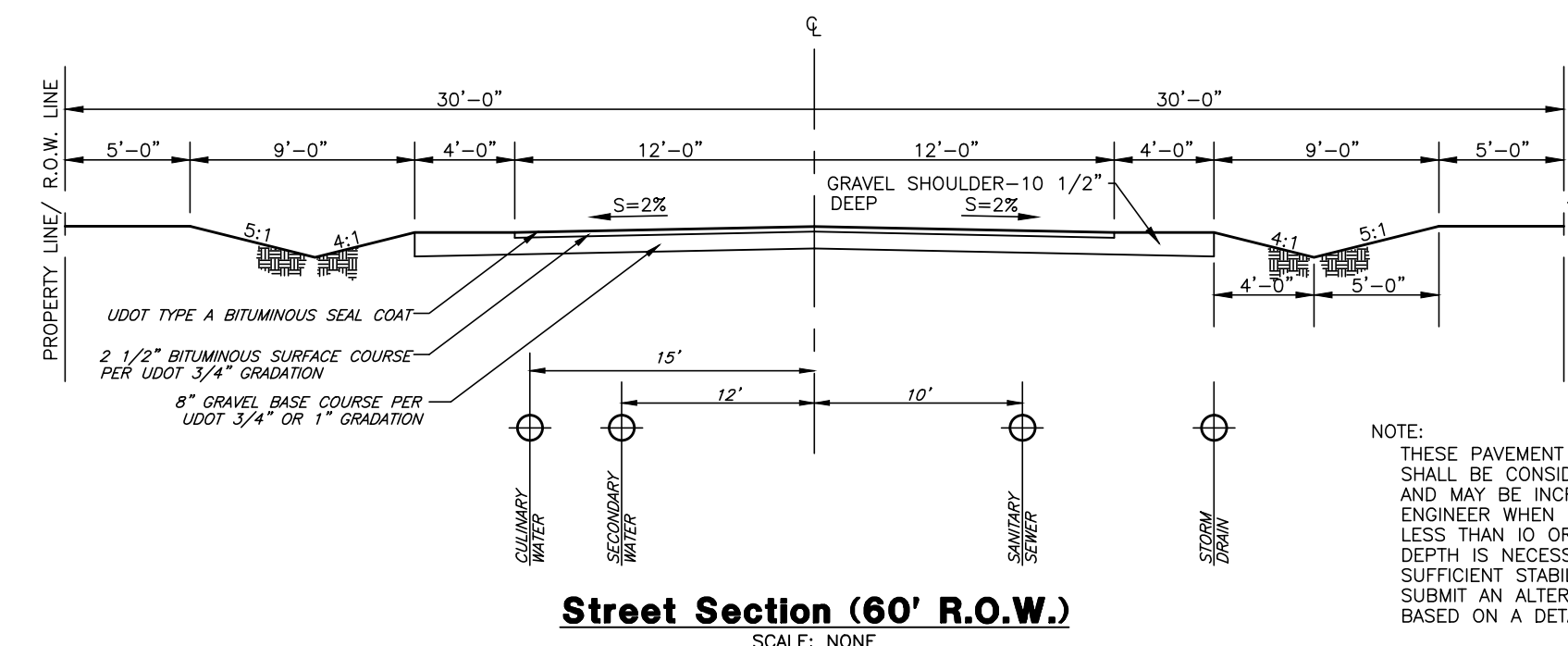


Vicinity Map

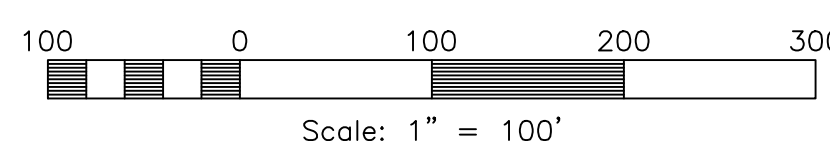
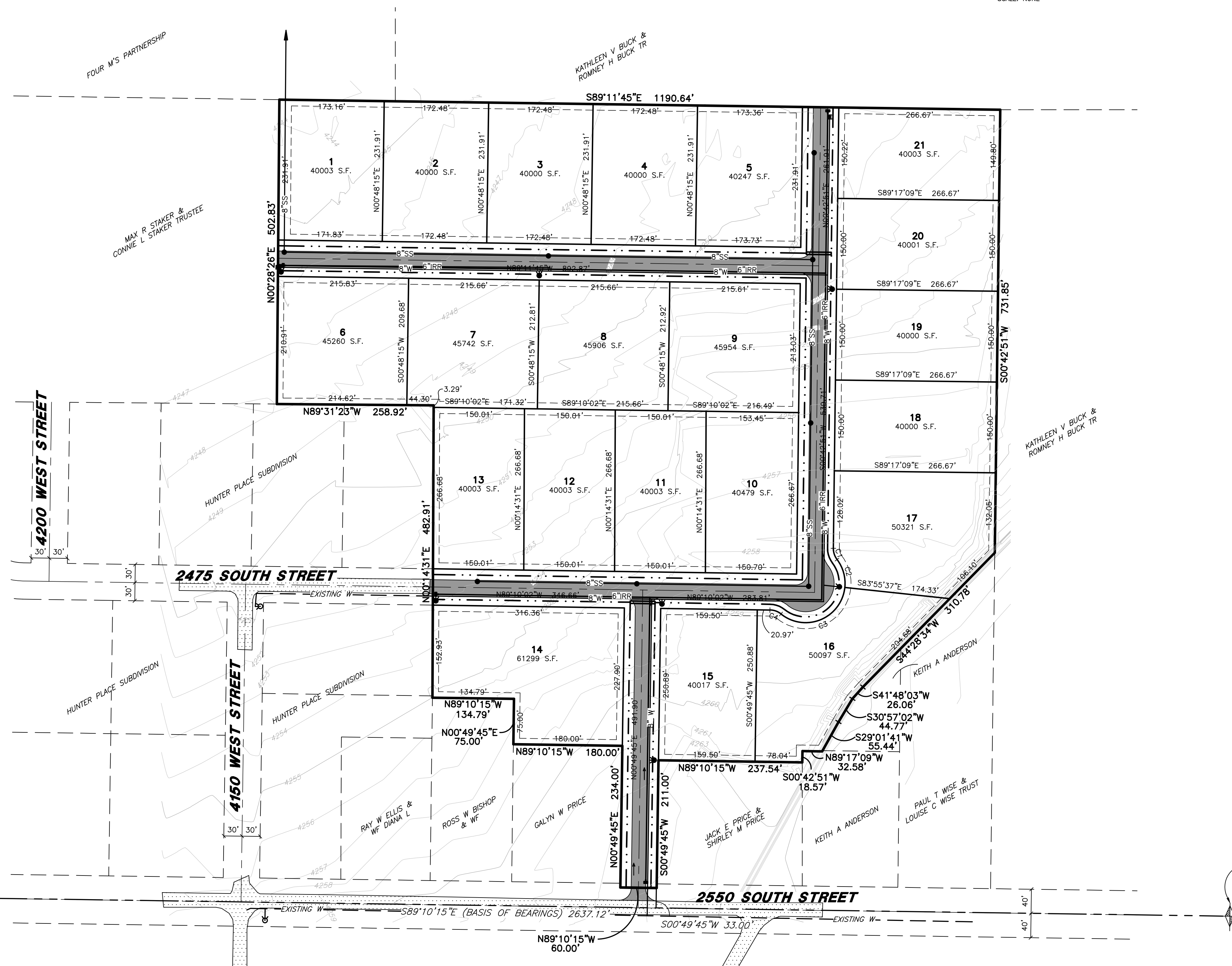


Street Section (60' R.O.W.)

NOTE: THESE PAVEMENT THICKNESSES SHALL BE CONSIDERED AS MINIMUMS AND MAY BE INCREASED BY THE COUNTY ENGINEER WHEN SUBGRADE C.B.R. IS LESS THAN 10 OR WHEN A GREATER DEPTH IS NECESSARY TO PROVIDE SUFFICIENT STABILITY. DESIGNER MAY SUBMIT AN ALTERNATIVE PAVEMENT DESIGN BASED ON A DETAILED SOILS ANALYSIS FOR

**Curve Data**

#	RADIUS	ARC LENGTH	CHD LENGTH	TANGENT	CHD BEARING	DELTA
C1	30.00'	19.83'	19.47'	10.29'	S18°13'03"E	37°51'49"
C2	65.00'	49.03'	47.88'	25.75'	N15°32'18"W	43°13'20"
C3	65.00'	139.11'	114.04'	118.78'	N67°23'05"E	122°37'25"
C4	30.00'	19.83'	19.47'	10.29'	N70°14'07"W	37°51'49"



Scale: 1" = 100'

# Mallard Springs Subdivision

Weber County, Utah

**Subdivider:**  
 Hamblin Investments  
 Doug Hamblin  
 1613 N. 2000 W.  
 Clinton, UT 84015  
 (801) 731-7703

REVISIONS	DESCRIPTION

**Mallard Springs Subdivision**  
 PART OF THE SW 1/4 OF SECTION 28, T.6N., R.2W., S.L.B. & M., U.S. SURVEY  
 WEBER COUNTY, UTAH

**Project Info.**  
 Engineer: N. Reeve  
 Designer: C. Cave  
 Drafter:  
 Begin Date: July 15, 2013  
 Name: MALLARD SPRINGS SUBDIVISION  
 Number: 3442-A30

Sheet **1** of 1 Sheets

Reeve & Associates, Inc.  
 4155 S. HARRISON BLVD., SUITE 310, OGDEN, UTAH 84403  
 TEL: (801) 671-1000 FAX: (801) 671-1006 www.reeve-assoc.com